



# MEXICO ACADEMY & CENTRAL SCHOOL

*Inspiring Excellence and Leadership in All!*

Mexico High School • 3338 Main Street • Mexico, NY 13114 • 315-963-8400 ext. 5109

## STUDENT SERVICES

Caryn Muckey  
School Counselor A-E

Mark Kuehn  
School Counselor F-M

Laura Hyde  
School Counselor N-Z

Amanda Cech  
School Psychologist

Melissa Terzulli  
Home School Liaison

# MEXICO HIGH SCHOOL COLLEGE PLANNING PACKET

It is not in the stars to hold our destiny but in ourselves.

~ William Shakespeare

## College Application Procedure Sheet

If you are applying to a four-year private college and/or a four-year SUNY school, you will be using both Naviance and Common Application to complete your application process. **All Community Colleges will have an online application that you can fill out individually via their websites.**

**Common Application** is how you apply to college.

**Naviance** is how your transcript and letters of recommendation are submitted to those colleges.

Please read carefully and follow the steps below to streamline the application process.

### Step 1 Use your Naviance account to develop a realistic list of colleges

- a) Click on "College's tab" and go to the "Colleges I'm Thinking About"
- b) Add Colleges to list and review current list of colleges you are thinking about
- c) Edit / Finalize your list of colleges

### Step 2 Register with Common Application (CA)

(All students who are applying to four year private and four year SUNY schools **MUST** create a Common App Account)

- a) Go to commonapp.org
- b) Register with Common App and create account
- c) Remember CA username and password
- d) Add colleges you are going to apply to into Common App
- e) Complete and submit college applications on Common App

### Step 3 Use Naviance to complete FERPA form

- a) Click on "College" tab and go to "Colleges I'm Applying to"
- b) Complete FERPA and enter Common App username and password
- c) Submit FERPA on Naviance

### Step 4 Use Naviance to add Colleges I'm Applying to

- a) Click on "College" tab and go to "Colleges I'm Thinking About"
- b) Select colleges you are going to apply to and click "Move to Application List"
- c) Your colleges will now appear in "Colleges I'm Applying To"
- d) Application Types: RD (Regular Decision), EA (Early Action), or ED (Early Decision), then click "Add Applications"
- e) I'll submit my application: Click "Via Common Application"
- f) Request transcript from your counselor (electronically, in person, or by email)
- g) Check "I have submitted my application" when done

### Step 5 Teacher Letter of Recommendation

(Please be aware of how many recommendations each college allows and select your teachers accordingly)

- a) Ask teacher in person for a letter of recommendation
- b) Go to Naviance and click on "College" tab
- c) Click on "Letters of Recommendation"
- d) Click on "Add Request" and use drop down menu to select teacher
- e) Select which colleges you would like the teacher's letter to go to, or select all colleges
- f) Add note (optional) then "save"
- g) Send Thank you card to teacher

**VERY IMPORTANT: The colleges on Common Application MUST match the "Colleges I'm Applying to" list on Naviance in order for your colleges to receive your transcript, letters of recommendation, and other required documents. Please be sure to verify this!**

## **Alternate Application Procedures**

### **If you are ONLY applying to a 2-year college then.....**

- You will not need to use Common Application and can skip steps 2 and 3
- You will still use Naviance and should follow steps 1 and 4
- Your transcript can be submitted electronically or by mail

### **If you are ONLY applying to SUNY schools, then....**

- You will not need to use Common Application
- You will need to create an account with SUNY.edu
- Your transcript can be submitted electronically
- You will still use Naviance and should follow steps 1, 4, and 5

### **If you are applying to a 4-year college that does not use Common Application, then...**

- You will still use Naviance and should follow steps 1, 4, and 5
- Your transcript and letters of recommendation can be submitted electronically via other online application provider (sendedu.org, Universal College App, etc.) college email address, or by mail. Please notify counselor of delivery type and provide any necessary forms.

### **If you are using paper applications then.....**

- You will still use Naviance and should follow steps 1, 4, and 5
- Provide your counselor with the application

## **Please remember**

**No matter which way you apply, you need to let your counselor know to send your transcript, counselor letter, and teacher letters of recommendation, one week or more before your application due date.**

### IMPORTANT NOTE:

Your SAT and/or ACT may be on your transcript. Please check with each college website to verify if your standardized test scores (SAT/ACT) need to be sent directly to the college from the testing agency.

ACT scores: [www.act.org](http://www.act.org)

SAT/SAT Subject Tests: [www.collegeboard.org](http://www.collegeboard.org)



# Community College Admissions Information Summary - 2021

For more information call our toll-free number at 800-342-3811 or visit us on the web at [www.suny.edu/attend](http://www.suny.edu/attend)

Campus Name	Enrollment		Honors Program	Phi Theta Kappa	ASC Participating Campus	Student-Only Housing	EOP	Study Abroad	English Language Options		Telephone Number	Web Address
	(Full-time)	(Part-time)							ROTC	ROTC		
Adirondack+	1,501	1,493	No	Yes	Yes	On Campus**	Yes	Yes	No	No	518.743.2264	<a href="http://www.sunyacc.edu">www.sunyacc.edu</a>
Broome	2,975	3,145	Yes	No	Yes	On Campus	Yes	No	Yes	No	607.778.5001	<a href="http://www.sunybroome.edu">www.sunybroome.edu</a>
Cayuga+	1,006	1,900	Yes	Yes	Yes	Off Campus**	No	Yes	No	No	866.598.8883	<a href="http://www.cayuga-cc.edu">www.cayuga-cc.edu</a>
Clinton+	367	693	Yes	Yes	Yes	Off Campus**	No	No	Yes	No	518.562.4170	<a href="http://www.clinton.edu">www.clinton.edu</a>
Columbia-Greene+	439	1,006	Yes	Yes	Yes		No	No	No	No	518.828.4181	<a href="http://www.sunycgcc.edu">www.sunycgcc.edu</a>
Corning+	1,493	2,570	Yes	Yes	Yes	On Campus**	No	No	No	No	607.962.9151	<a href="http://www.corning-cc.edu">www.corning-cc.edu</a>
Dutchess+	3,015	5,019	Yes	Yes	Yes	On Campus**	Yes	Yes	Yes	Yes*	845.431.8018	<a href="http://www.sunydutchess.edu">www.sunydutchess.edu</a>
Erie+	5,059	3,305	Yes	No	Yes	Off Campus**	Yes	Yes	Yes	No	716.851.1456	<a href="http://www.ecc.edu">www.ecc.edu</a>
FIT+	6,966	993	Yes	No	Yes	On Campus**	Yes	Yes	Yes	No	212.217.3760	<a href="http://www.fitnyc.edu">www.fitnyc.edu</a>
Finger Lakes	2,095	3,459	Yes	Yes	Yes	On Campus**	Yes	Yes	Yes	Yes*	585.785.1279	<a href="http://www.flcc.edu">www.flcc.edu</a>
Fulton-Montgomery	997	1,301	No	Yes	Yes	On Campus**	Yes	Yes	Yes	No	518.736.3622	<a href="http://www.fmcc.edu">www.fmcc.edu</a>
Genesee+	1,740	2,995	Yes	Yes	Yes	On Campus	Yes	Yes	Yes	Yes*	585.345.6800	<a href="http://www.genesee.edu">www.genesee.edu</a>
Herkimer	1,200	1,100	Yes	Yes	Yes	On Campus**	No	No	Yes	Yes*	315.574.4028	<a href="http://www.herkimer.edu">www.herkimer.edu</a>
Hudson Valley+	4,545	4,389	No	Yes	Yes	Off Campus*	Yes	Yes	Yes	Yes*	518.629.7309	<a href="http://www.hvcc.edu">www.hvcc.edu</a>
Jamestown+	1,654	1,776	Yes	Yes	Yes	On Campus	No	Yes	Yes	Yes*	716.499.6925	<a href="http://www.sunyjcc.edu">www.sunyjcc.edu</a>
Jefferson+	1,431	1,227	Yes	Yes	Yes	On Campus	Yes	No	No	No	315.786.2437	<a href="http://www.sunyjefferson.edu">www.sunyjefferson.edu</a>
Mohawk Valley+	2,532	3,173	Yes	Yes	Yes	On Campus**	Yes	No	Yes	Yes*	315.792.5354	<a href="http://www.mvcc.edu">www.mvcc.edu</a>
Monroe+	5,493	4,668	Yes	Yes	Yes	On Campus	Yes	Yes	Yes	Yes*	585.292.2200	<a href="http://www.monroecc.edu">www.monroecc.edu</a>
Nassau+	7,594	6,270	Yes	Yes	No	Off Campus*	Yes	Yes	Yes	No	516.572.7345	<a href="http://www.ncc.edu">www.ncc.edu</a>
Niagara+	2,353	1,993	Yes	Yes	Yes	On Campus**	Yes	Yes	No	No	716.614.6200	<a href="http://www.niagaracc.suny.edu">www.niagaracc.suny.edu</a>
North Country+	652	950	No	Yes	Yes	On Campus**	No	No	Yes	Yes*	888.TRY.NCCC	<a href="http://www.nccc.edu">www.nccc.edu</a>
Onondaga+	3,612	4,933	Yes	Yes	Yes	On Campus**	Yes	Yes	Yes	Yes*	315.498.2221	<a href="http://www.sunyocc.edu">www.sunyocc.edu</a>
Orange+	2,481	3,381	Yes	Yes	Yes		Yes	No	Yes	No	845.341.4030	<a href="http://www.sunyorange.edu">www.sunyorange.edu</a>
Rockland	3,013	3,396	Yes	Yes	No		No	Yes	Yes	No	845.574.4224	<a href="http://www.sunyrockland.edu">www.sunyrockland.edu</a>
Schenectady+	1,227	2,788	No	Yes	Yes	Off Campus**	Yes	Yes	No	No	518.381.1366	<a href="http://www.sunysccc.edu">www.sunysccc.edu</a>
Suffolk+	11,112	11,467	Yes	Yes	No		Yes	Yes	Yes	No	631.451.4000	<a href="http://www.sunysuffolk.edu">www.sunysuffolk.edu</a>
Sullivan+	704	956	No	Yes	Yes	On Campus**	No	No	No	No	800.577.5243	<a href="http://www.sunysullivan.edu">www.sunysullivan.edu</a>
Tompkins Cortland+	1,203	3,570	No	Yes	Yes	On Campus**	No	Yes	Yes	No	607.844.6580	<a href="http://www.tompkinscortland.edu">www.tompkinscortland.edu</a>
Ulster+	1,125	1,964	Yes	Yes	Yes		Yes	No	Yes	No	845.687.5022	<a href="http://www.sunyulster.edu">www.sunyulster.edu</a>
Westchester+	5,019	5,053	Yes	Yes	No		Yes	Yes	Yes	No	914.606.6735	<a href="http://www.sunywcc.edu">www.sunywcc.edu</a>

\* With neighboring institutions

\*\* Run by Campus Foundation, Dormitory Corporation or Privately Owned

+ Contains 2020 Data

# Campuses at a Glance

## Undergraduate Campuses

	ADMITTED STUDENT PROFILE <sup>A</sup> (Bachelors)			ADMISSIONS			ACADEMICS			HOUSING			SERVICE/ROTC				
	High School GPA (middle 50%)	SAT EPW+M (middle 50%)	ACT (middle 50%)	SAT/ACT Required (*) or Recommended (o)	Early Decision (ED)/ Early Action (EA) <sup>B</sup>	EOP	Special Talent Admission <sup>C</sup>	English Language Options	Honors Program	Day Care	On-Campus Housing	Housing Required for Freshmen	Air Force	Army	Marines	Navy	Coast Guard <sup>D</sup>
University at Albany	88-94	1150-1310	23-27	*	EA	*	*	*	*	*	*2	*3					
Binghamton University	93-98	1300-1450	28-32	*	EA	*	*	*	*	*	*6	*3					
University at Buffalo	90-96	1180-1350	24-30	*5	EA	*	*	*	*	*7							
Stony Brook University	91-97	1250-1420	26-32	*5		*10	*	*	*	*							
Environmental Sci & Forestry	90-96	1120-1310	23-28	*	ED	*	*	*	*	*		*3					
SUNY Polytechnic (Albany)	90-95	1230-1440	25-31	*	EA	*	*	*	*	*	*2						
SUNY Polytechnic (Ulster)	88-94	1120-1330	22-28	*	EA	*	*	*	*	*	*2	*3					
NYS Ceramics at Alfred U	84-87	1000-1050	22-24	*	ED	*	*	*	*	*							*3
SUNY Downstate Health Sci U						*											
Upstate Medical University				o		*											
Ag & Life Sciences at Cornell		1390-1530	31-35	*	ED	*		*						*	*	*	*
Human Ecology at Cornell		1430-1530	32-35	*	ED	*								*	*	*	*
Indus & Labor Rel at Cornell		1360-1510	31-34	*	ED	*								*	*	*	*
The College at Brockport	88-93	1090-1210	21-26	*		*	*	*	*	*	*2	*3					*3
Buffalo State	80-89	920-1090	17-21	*		*	*	*	*	*	*2						*3
SUNY Cortland	86-92	1100-1230	24-26	*	EA	*	*	*	*	*							*3
SUNY Fredonia	85-94	1010-1210	20-25	*		*	*	*	*	*							*3
SUNY Geneseo	90-95	1170-1300	24-28	*	ED	*	*	*	*	*							*3
SUNY New Paltz	90-95	1150-1300	24-29	*	EA	*	*	*	*	*							*3
Old Westbury	83-90	1000-1140	21-25	*	EA	*	*	*	*	*							*3
SUNY Oneonta	87-93	1060-1200	21-25	*	EA	*	*	*	*	*	*2						*3
SUNY Oswego	86-92	1100-1250	22-26	*	EA	*	*	*	*	*	*2	*3					*3
SUNY Plattsburgh	84-92	1010-1180	20-26	*		*	*	*	*	*	*2						*3
SUNY Potsdam	85-93					*	*	*	*	*	*2	*3					*3
Purchase College	86-90				EA <sup>B</sup>	*	*	*	*	*							
Empire State College																	*3
Alfred State College	85-94	1040-1230	21-28	*11		*	*	*	*	*	*6						*3
SUNY Canton	81-90	970-1140	19-24	*11		*	*	*	*	*	*6	*3					*3
SUNY Cobleskill	77-88	890-1110	18-24	*11		*	*	*	*	*							
SUNY Delhi	82-91	1010-1160	19-23	*12		*	*	*	*	*							
Farmingdale State College	85-91	930-1120	20-24	*		*	*4	*	*	*							*3
Maritime College	86-92	1170-1220	22-26	*	ED	*		*	*	*	*13	*3				*	*3
SUNY Morrisville	81-88	930-1100	19-22	*11		*	*	*	*	*							*3
SUNY Adirondack						*	*	*	*	*							
SUNY Broome						*	*	*	*	*							
Cayuga						*	*	*	*	*							
Clinton				o		*	*	*	*	*							
Columbia-Greene				o		*	*	*	*	*							
Corning				o		*	*	*	*	*							
Dutchess				o		*	*	*	*	*							*3
Erie (City)						*	*	*	*	*							*3
Erie (North)						*	*	*	*	*							*3
Erie (South)						*	*	*	*	*							*3
Fashion Institute of Technology				*1		*	*9	*	*	*							
Finger Lakes				o		*	*	*	*	*							*3
Fulton-Montgomery						*	*	*	*	*							
Genesee				o		*	*	*	*	*							*3
Herkimer County				o		*	*	*	*	*							*3
Hudson Valley				o		*	*	*	*	*							*3
Jamestown						*	*	*	*	*							
Jamestown (Cattaraugus)						*	*	*	*	*							
Jefferson				o		*	*	*	*	*							
Mohawk Valley				o		*	*	*	*	*							*3
Monroe				o		*	*	*	*	*							*3
Nassau				o		*	*	*	*	*							*3
Niagara County				o		*	*	*	*	*							
North Country				o		*	*	*	*	*							*3
Onondaga				o		*	*	*	*	*							*3
Orange County				o		*	*	*	*	*							*3
Rockland						*	*	*	*	*							
Schenectady County						*	*10	*	*	*							
Suffolk County				o		*	*	*	*	*							
Sullivan County				o		*	*	*	*	*							*6
Tompkins Cortland						*	*	*	*	*							
Ulster County				o		*	*	*	*	*							
SUNY Westchester				o		*	*	*	*	*							

**A** Scores represent middle 50% of freshman students admitted to 4-year programs for fall 2019.

**B** Refers to early application and notification. Contact college for details.

**C** Students inadmissible by regular standards may be admitted through special talent. Contact colleges for details.

**D** Coast Guard is not part of ROTC. Both scholarship and non-scholarship programs can be commissioned.

1 SAT or ACT scores are required for students' English and Math placements. They are not considered in admissions decisions.

2 Also required of sophomores.

3 In affiliation with neighboring college.

4 Portfolio required for all Visual Communications applicants.

5 Test scores must be submitted by testing agency.

6 Unless commuting from home.

7 Priority is given to new students if housing application received by May 1.

8 BFA and MusB not eligible for Early Action.

9 Portfolio required for all Art and Design applicants.

10 Audition required for all Music degree majors.

11 Required for baccalaureate-level programs, some scholarship considerations, and those interested in intercollegiate athletics.

12 Required for baccalaureate-level programs, some associate-level programs, all merit scholarship considerations, and those interested in intercollegiate athletics.

13 Housing is required for students participating in the Regiment of Cadets.

# Broad Areas of Undergraduate Study

Undergraduate Campuses	Agriculture and Conservation	Architecture and Environmental Design	Biological and Biomedical Sciences	Business	Communications	Computer Science and Mathematics	Culinary Arts	Education	Engineering and Engineering Technology	Ethnic and Area Studies	Foreign Languages	Health and Wellness Professions	Humanities and Social Sciences	Law, Justice and Social Service	Physical Sciences	Psychology	Visual and Performing Arts
University at Albany			B	B	B	B			B	B	B	B	B	B	B	B	B
Binghamton University			B	B		B			B	B	B	B	B		B	B	B
University at Buffalo		B	B	B	B	B		B	B	B	B	B	B	B	B	B	B
Stony Brook University		B	B	B	B	B		B	B	B	B	B	B	B	B	B	B
Environmental Sci & Forestry	B	B	AB	B					AB			B			AB		
SUNY Polytechnic			B	B	B	B			B			B	B		B	B	
NYS Ceramics at Alfred U									B								B
SUNY Downstate Health Sciences U												B					
Upstate Medical University			B									B			B		
NYS Colleges at Cornell U	B	B	B	B	B	B			B			B	B		B	B	B
The College at Brockport			B	B	B	B		B	B	B	B	B	B	B	B	B	B
Buffalo State			B	B	B	B		B	B	B	B	B	B	B	B	B	B
SUNY Cortland			B	B	B	B		B	B	B	B	B	B	B	B	B	B
SUNY Fredonia			B	B	B	B		B	B		B	B	B	B	B	B	B
SUNY Geneseo			B	B	B	B		B	B	B	B	B	B	B	B	B	B
SUNY New Paltz	B		B	B	B	B		B	B	B	B	B	B	B	B	B	B
Old Westbury			B	B	B	B		B		B	B		B	B	B	B	B
SUNY Oneonta	B		B	B	B	B		B	B	B	B	B	B	B	B	B	B
SUNY Oswego			B	B	B	B		B	B	B	B	B	B	B	B	B	B
SUNY Plattsburgh			B	CB	CB	B		B	B	B	B	CB	B	B	B	B	CB
SUNY Potsdam			B	B	B	B		B	B	B	B	B	B	B	B	B	B
Purchase College			B		B	B				B	B		B		B	B	B
Empire State College				CAB	AB	AB		AB			AB	B	AB	AB	AB	AB	AB
Alfred State College	AB	AB	A	CAB	AB	AB	A	A	AB			CAB	AB	AB	A		AB
SUNY Canton	AB		AB	AB	B	AB		AB	CAB			CAB	AB	AB	A	B	B
SUNY Cobleskill	AB		AB	CAB	AB	AB	B		AB			CAB	AB		AB	B	A
SUNY Delhi	AB	AB	A	AB			AB	A	AB			AB	A	AB	A		
Farmingdale State College	CA		B	CB	B	CB			CB			CAB	B	AB	B	B	B
Maritime College				B					B				B		A		
SUNY Morrisville	AB	A	A	CAB	AB	AB	A		CAB			AB	CAB	A	B	B	
SUNY Adirondack			A	A	CA	CA	CA	CA	A			A	A	A	A		CA
SUNY Broome				CA	A	CA			CA			CA	CA	A	A		CA
Cayuga	A			CA	A	CA	A	CA	CA			A	A	A	A		A
Clinton			A	CA		CA			CA			CA	CA	A	A		
Columbia-Greene			A	CA		A		CA	CA			A	A	A	A		CA
Corning	A			A	CA	CA		C	CA			A	A	CA	A		A
Dutchess		A	A	CA	A	CA		A	CA			CA	CA	A	A		CA
Erie (City)				CA			C	CA	C			A	CA	C			A
Erie (North)				CA		CA	C	A	CA			CA	CA	CA	A		CA
Erie (South)				A	A	CA		A	CA			CA	CA				A
Fashion Institute of Technology				AB	AB				A				B				AB
Finger Lakes	CA		A	CA	A	CA	CA	C	CA			CA	CA	CA	CA	A	A
Fulton-Montgomery				CA	A	A		C	CA			A	CA	A			A
Genesee	A		A	CA	A	CA		CA	CA			CA	CA	CA	A		CA
Herkimer County	A			CA	A	A		CA	CA			CA	A	CA	A		A
Hudson Valley			CA	CA		CA		CA	CA			CA	CA	A	CA		CA
Jamestown			A	CA	CA	CA		A	CA	A		CA	CA	CA	A		CA
Jamestown (Cattaraugus)				CA	A	CA			C	A		CA	CA	CA			
Jefferson	A			CA		A		CA	A			CA	A	CA			
Mohawk Valley				CA	A	CA	CA	A	CA		C	CA	CA	CA	A	A	CA
Monroe	CA		A	CA	A	CA	C	C	CA	A		CA	CA	CA	A	A	CA
Nassau			A	CA	CA	CA	CA	CA	CA	CA	A	CA	CA	A	A		CA
Niagara County	CA		A	CA	CA	CA	CA	CA	CA	C		CA	A	A	A	A	CA
North Country				A								CA	CA	A	A		CA
Onondaga		A	A	CA	A	CA	C	CA	A		A	CA	A	CA	A		A
Orange County			A	CA	A	A		CA	A		A	A	A	CA	A		A
Rockland				CA	A	CA	C		CA			CA	CA	A	A		A
Schenectady County			A	CA		CA	CA	CA	CA			CA	A	CA	A		CA
Suffolk County			A	CA	A	CA	CA	A	CA		A	CA	CA	CA	A	A	A
Sullivan County				CA	A	A	CA	A	CA			A	CA	A	A	A	A
Tompkins Cortland			CA	CA	A	A			CA			CA	CA	CA	CA		
Ulster County	CA		A	CA	A	CA		A	CA		A	A	CA	CA	A		A
SUNY Westchester	A			CA	A	CA	A	CA	CA			CA	CA	CA	A		CA

C Certificate    A Associate    B Bachelor's



# Admissions Information Summary – 2021

For more information call our toll-free number at 800-342-3811 or visit us on the web at [www.suny.edu/attend](http://www.suny.edu/attend)

Campus Name (by campus type)	Undergraduate Enrollment	2020 SAT Scores** (combined) <i>Scores reflect middle 50%</i>	2020 ACT Scores (composite)	H.S. GPA	Early Decision (ED) or Early Action (EA)	Early Admission	EOP Program	English Language Options	Joint Admissions	Teaching Certificate	Honors Program	Time Shortened Degree	ROTC
<b>University Centers and Doctoral Degree Granting Institutions</b>													
Albany+	13,182	1130-1300	23-29	89-95	EA	Yes	Yes	Yes	Yes	Grad level	Yes	Yes	A*, AF*
Binghamton+	14,333	1300-1450	29-33	93-98	EA	Yes	Yes	Yes	Yes	Grad level	Yes	No	A*, AF*
University at Buffalo***+	22,307	1150-1330	24-30	90-97	EA	Yes	Yes	Yes	Yes	Grad level	Yes	No	A*
Stony Brook***	18,010	1250-1340	27-33	92-97	No	No	Yes	Yes	Yes	Yes	Yes	No	A*
SUNY Polytechnic Institute	2,100	1130-1300	26-32	85-98	EA	No	Yes	No	Yes	No	No	No	A*, AF*
NYS Ceramics at Alfred University	528	1000-1160	20-27	83-92	EA	Yes	Yes	No	No	Yes*	Yes	No	A
College of Optometry	Graduate and Professional Degrees Only				No	No	No	No	Yes	No	No	No	
Cornell University:								Yes					
Agriculture & Life Sciences+	3,591	1370-1530	31-35	--	ED	Yes	Yes	No	No	No	Yes	No	A, AF,M,N
Human Ecology+	1,181	1445-1540	33-35	--	ED	Yes	Yes	No	No	No	Yes	No	A, AF,M,N
Veterinary Medicine	Graduate Level Only		--		No	No	No	No	No	No	No	No	
Industrial & Labor Relations	986	1390-1520	31-34	--	ED	Yes	Yes	No	No	No	No	No	A, AF,M,N
Environmental Science & Forestry	1,742	1120-1310	23-28	91-97	ED	Yes	Yes	Yes*	No	No	Yes	Yes	A*, AF*
SUNY Downstate Health Sciences Univ+	187	--	--	--	No	No	Yes	No	No	No	No	No	
Upstate Medical University (Syracuse)+	205	--	--	--	No	No	Yes	No	Yes	No	No	No	
<b>University Colleges</b>													
Brockport+	6,289	1080-1200	21-26	87-94	No	Yes	Yes	Yes	Yes	Yes	Yes	Yes	A, AF*,N*
Buffalo State+	7,309	920-1130	18-28	80-88	No	Yes	Yes	Yes	Yes	Yes	Yes	No	A*
Cortland+	6,256	1100-1230	24-26	88-94	EA	Yes	Yes	No	Yes	Yes	Yes	No	A*, AF*
Fredonia	4,226	1030-1220	21-26	84-94	No	No	Yes	Yes	Yes	Yes	Yes	Yes	
Geneseo	5,124	1170-1320	25-30	90-96	ED	No	Yes	Yes	Yes	Yes	Yes	No	A*, AF*
New Paltz+	6,597	1130-1280	24-29	90-95	EA	No	Yes	Yes	Yes	Yes	Yes	Yes	A*
Old Westbury	4,347	1000-1130	19-23	83-91	EA	Yes	Yes	No	Yes	Yes	Yes	Yes	A*, AF*
Oneonta	5,600	1070-1220	22-27	87-93	EA	Yes	Yes	Yes	Yes	Yes	No	Yes	
Oswego+	6,673	1050-1240	21-27	87-95	EA	Yes	Yes	Yes	Yes	Yes	Yes	Yes	A*, AF*
Plattsburgh+	4,680	1020-1170	21-26	85-94	No	No	Yes	Yes	No	Yes	Yes	Yes	
Potsdam+	2,842	--	--	85-93	No	Yes	Yes	Yes	Yes	Yes	Yes	Yes	A*, AF*
Purchase+	3,600	--	--	87-90	EA	No	Yes	Yes	No	No	No	No	
Empire State College+	9,145	--	--	--	No	No	Yes	No	Yes	Grad Level	No	Yes	
<b>Colleges of Technology</b>													
Alfred State + Baccalaureate only	3,667 1,732	940-1150 990-1220	19-25 21-27	80-90 83-92	No	Yes	Yes	Yes	Yes	No	Yes	Yes	A*
Canton+ Baccalaureate only	3,122 2,063	920-1130 970-1150	17-23 18-23	80-90 82-91	No	Yes	Yes	No	Yes	No	Yes	Yes	A*, AF*
Cobleskill+ Baccalaureate only	2,079 1,526	870-1060 930-1070	18-22 21-25	81-90 82-91	No	Yes	Yes	Yes	Yes	No	Yes	Yes	A*
Delhi Baccalaureate only	2,800 1,480	920-1100 970-1130	19-23 19-25	79-88 82-90	No	Yes	Yes	No	No	No	Yes	No	
Farmingdale State+	9,948	990-1150	19-24	84-91	No	No	Yes	No	Yes	No	Yes	No	A*, AF*
Maritime College	1,780	1170-1220	22-26	86-93	ED	No	Yes	No	Yes	No	No	No	A*,CG,M,N
Morrisville State Baccalaureate only	1,615 630	850-1060 860-1050	18-23 17-22	79-83 81-84	No	Yes	Yes	No	No	No	No	No	A*

Abbreviations: A = Army, AF = Air Force, CG = Coast Guard, M = Marines, N = Navy

\* Cross-registration (offered at neighboring institutions)

\*\* The SAT ranges above represent combined evidence-based reading and writing and math scores. (The maximum possible total is 1600.)

\*\*\* Enrollment includes Health Science Centers.

+ Contains 2020 data.





# Honors Programs Information Summary - 2021

For more information call our toll-free number at 800-342-3811 or visit us on the web at [www.suny.edu/attend](http://www.suny.edu/attend)

Campus Name (by campus type)	Undergraduate Enrollment	Honors Freshman Enrollment	Total Honors Enrollment	2020	2020	H.S. GPA	Scholar- ships	Contact	Telephone	Email
				SAT Scores (combined) Scores reflect middle 50%	ACT Scores (composite) Scores reflect middle 50%					
<b>University Centers and Doctoral Degree Granting Institutions</b>										
Albany+	13,182	280	900	1240-1400	26-31	94-98	Yes	James Curley	518.442.5435	honors@albany.edu
Binghamton+	14,333	100	410	1500-1540	34-35	97-100	Yes	Stephen Ortiz	607.777.3583	sortiz@binghamton.edu
University at Buffalo**+	22,307	349	1,366	1340-1470	29-33	95-99	Yes	Tim Matthews	716.645.3020	trm7@buffalo.edu
Stony Brook**	18,010	450	1,800	1380-1520	31-35	95-99	Yes	Judith Berhannan	631.632.6872	judith.burke-berhannan@stonybrook.edu
NYS Ceramics at Alfred University	528	34	35	1180-1330	25-30	82-99	Yes	Juliana Gray	607.871.2256	gray@alfred.edu
Environmental Science & Forestry	1,742	25	43	1380-1450	31-33	96-99	Yes	Stewart Diemont	315.470.4707	sdiemont@esf.edu
<b>University Colleges</b>										
Brockport+	6,289	82	299	1260-1320	26-29	93-97	Yes	Austin Busch	585.395.5400	honors@brockport.edu
Buffalo State+	7,309	140	550	1130-1280	22-28	91-95	Yes	Amy McMillan	716.878.3093	honors@buffalostate.edu
Cortland+	6,256	28	105	1300-1420	32-35	96-98	Yes	Frank Rossi	607.753.4827	honors@cortland.edu
Fredonia	4,226	124	427	1200-1340	26-30	93-98	No	Natalie Gerber	716.673.3855	natalie.gerber@fredonia.edu
Geneseo	5,124	39	134	1390-1460	29-34	96-99	Yes	Lisa Meyer	585.245.6207	meyer@geneseo.edu
New Paltz+	6,597	40	320	1260-1330	28-33	93-99	Yes	Patricia Sullivan	845.257.3456	sullivap@newpaltz.edu
Old Westbury	4,347	36	176	1180-1300	25-28	93-96	Yes	Anthony DeLuca	516.876.3177	delucaa@oldwestbury.edu
Oswego+	6,673	95	230	1290-1380	27-30	96-100	Yes	Casey Raymond	315.312.2699	casey.raymond@oswego.edu
Plattsburgh+	4,680	53	336	1200-1320	24-29	93-98	Yes	Tracie Guzzio	518.564.2415	guzziotc@plattsburgh.edu
Potsdam+	2,842	42	262	--	--	96-100	Yes	Thomas Baker	315.267.2900	bakertn@potsdam.edu
<b>Colleges of Technology</b>										
Alfred State+	3,667	10	30	1080-1300	23-26	86-92	No	Janice Stafford	607.587.4799	staffojl@alfredstate.edu
Canton+	3,122	45	124	1010-1170	19-27	91-95	No	Kelly Peterson	315.386.7544	dehautk@canton.edu
Cobleskill+	2,079	21	41	1220-1450	--	91-99	Yes	Mary Rooney	518.255.5562	rooneymm@cobleskill.edu
Delhi	2,800	10	30	--	--	90-92	Yes	Shelly Jones	607.746.4313	jonesmc@delhi.edu
Farmingdale+	9,948	--	--	--	--	--	Yes	Erwin Cabrera	934.420.5419	cabrere@farmingdale.edu
<b>Community Colleges</b>										
Broome+	6,120	25	50	--	--	92-98	Yes	Maureen Kollar	607.778.5648	kollarmk@sunybroome.edu
Cayuga+	2,906	--	71	--	--	85	Yes	Sheila Myers	315.255.1743	sheila.myers@cayuga-cc.edu
Clinton+	1,060	5	15	--	--	90	No	Angela Barnaby	518.562.4271	angela.barnaby@clinton.edu
Columbia-Greene+	1,445	--	27	--	--	85	Yes	Michael Phippen	518.828.4181 x3236	phippen@sunycgcc.edu
Corning+	4,063	--	--	--	--	--	Yes	Matthew Skerritt	607.962.9538	mskerritt@corning-cc.edu
Dutchess+	8,034	20	37	--	--	91-95	No	Werner Steger	845.431.8522	steger@sunydutchess.edu
Erie+	8,364	41	41	--	--	--	No	Vanessa Haddad	716.851.1616	haddad@ecc.edu
Fashion Institute of Technology+	7,959	40	180	1220-1340	29-31	90-96	Yes	Yasemin Levine	212.217.4590	yasemin_levine@fitnyc.edu
Finger Lakes+	5,554	24	58	--	--	85	Yes	Trista Merrill	585.785.1357	trista.merrill@fllcc.edu
Genesee+	4,735	--	--	--	--	--	Yes	Garth Swanson	585.345.6800	gpswanson@genesee.edu
Herkimer	2,300	16	28	--	--	88	No	Jennifer Herzog	315.866.0300	herzogja@herkimer.edu
Hudson Valley+	8,934	28	56	1050-1150	--	88-90	Yes	Heather Chase	518.629.7191	h.chase@hvcc.edu
Jamestown+	3,430	44	75	--	--	93-100	No	Lisa Cooper	716.338.1045	lisacooper@mail.sunyjcc.edu
Jefferson+	2,658	12	36	1250	27	91-96	Yes	Joshua Canale	315.777.2427	jcanale@sunyjefferson.edu
Mohawk Valley+	5,705	20	35	--	--	--	Yes	Erica Brindisi	315.731.5733	ebrindisi@mvcc.edu
Monroe+	10,161	22	113	--	--	--	Yes	Thomas Blake	585.292.3351	tblake@monroecc.edu
Nassau+	13,864	100	400	--	--	89	No	Elizabeth Hynes-Musnisky	516.572.7194	honorsprogram@ncc.edu
Niagara+	4,346	19	36	1090	--	87-90	No	Pamela Lange	716.614.6877	plange@niagaracc.suny.edu
Onondaga+	8,545	22	62	--	--	90-99	Yes	Jacqueline Barstow	315.498.2490	j.a.barstow2@sunyocc.edu
Orange+	5,862	37	86	--	--	89-94	Yes	Maynard Schmidt	845.341.4205	maynardschmidt@sunyorange.edu
Rockland+	6,409	91	324	1100-1200	24-27	88-92	Yes	Katherine Lynch	845.574.4743	klynch8@sunyrockland.edu
Suffolk+	22,579	223	555	1100	24	85	Yes	Albin Cofonea	631.451.4335	cofonea@sunysuffolk.edu
Sullivan+	1,660	12	25	--	--	87-90	Yes	Gabriel Rikard	845.434.5750 x4394	grikard@sunysullivan.edu
Tompkins Cortland+	4,773	--	36	--	--	--	No	Karen Pastorello	607.844.8222 x4425	pastork@tompkinscortland.edu
Ulster+	3,089	20	35	--	--	88	Yes	Jennifer Kaufman	845.688.1593	kaufmanj@sunyulster.edu
Westchester+	10,072	--	165	--	--	--	Yes	Mira Sakrajda	914.606.6772	mira.sakrajda@sunywcc.edu

Additional SUNY campuses may offer Honors Programs. Contact campuses for information.

\* The SAT ranges above represent combined evidence-based reading and writing and math scores. (The maximum possible total is 1600.)

\*\* Enrollment includes Health Science Centers.

+ Contains 2020 data.





# Educational Opportunity Program (EOP) Information Summary - 2021

For more information call our toll-free number at 800-342-3811 or visit us on the web at [www.suny.edu/attend](http://www.suny.edu/attend)

Campus Name (by campus type)	Undergraduate Enrollment	EOP Freshman Enrollment	2021 Planned Total EOP Enrollment	2020 SAT* Scores (Combined)	2020 ACT Scores (Composite)	High School GPA	Accepts SUNY EOP Fin Info Form	Summer Program
				(Scores reflect middle 50%)				
<b>University Centers and Doctoral Degree Granting Institutions</b>								
Albany+	13,182	163	760	990-1070	18-20	83-89	Yes	Yes
Binghamton+	14,133	137	585	1080-1170	21-24	87-91	Yes	Yes
University at Buffalo**+	22,307	135	702	960-1040	14-20	84-89	Yes	Yes
Stony Brook**	18,010	151	673	1050-1150	20-24	86-90	No	Yes
SUNY Polytechnic Institute	2,100	18	68	950-1020	--	79-87	Yes	Yes
NYS Ceramics at Alfred University+	528	0	2	800-900	18-21	72-82	Yes	Yes
NYS Colleges at Cornell University		30	109	1140-1250	--	90-96	No	Yes
Environmental Science & Forestry+	1,742	6	42	1070-1260	--	84-90	No	Yes
<b>University Colleges</b>								
Brockport+	6,289	69	312	900-980	18-19	80-85	Yes	Yes
Buffalo State+	7,309	186	760	870-1000	15-18	77-85	Yes	Yes
Cortland+	6,256	21	123	940-1030	15-19	82-88	Yes	Yes
Fredonia+	4,226	30	130	840-980	--	75-85	Yes	Yes
Geneseo	5,124	30	125	970-1080	17-24	84-90	Yes	Yes
New Paltz+	6,597	150	505	910-1040	--	78-82	Yes	Yes
Old Westbury+	4,347	51	290	820-950	14-17	76-81	Yes	Yes
Oneonta	5,600	49	205	890-990	16-20	81-84	Yes	Yes
Oswego+	6,673	100	318	880-980	--	80-84	Yes	Yes
Plattsburgh+	4,680	75	239	880-1000	17-19	77-85	Yes	Yes
Potsdam+	2,842	20	125	--	--	78-84	Yes	Yes
Purchase+	3,600	37	172	--	--	79-82	Yes	Yes
Empire State+	9,145						No	Yes
<b>Colleges of Technology</b>								
Alfred State+	3,667	24	102	880-1070	--	77-83	Yes	Yes
Canton+	3,122	28	140	810-930	--	73-76	Yes	Yes
Cobleskill+	2,079	55	112	830-930	--	73-76	Yes	Yes
Delhi	2,800	19	150	870-940	--	78-83	Yes	Yes
Farmingdale+	9,948	24	118	910-980	--	76-85	Yes	Yes
Maritime	1,780	11	66	930-1070	--	81-85	Yes	Yes
Morrisville	1,615	27	163	800-950	--	73-77	Yes	Yes
<b>Community Colleges</b>								
Adirondack+	2,994	40	80	--	--	70-84	Yes	Yes
Broome+	6,120	32	83	--	--	75-83	Yes	Yes
Dutchess+	8,034	60	119	--	--	74-84	Yes	Yes
Erie+	8,364	15	200	--	--	77-88	Yes	Yes
Fashion Institute of Technology+	7,959	61	240	--	--	78-82	Yes	Yes
Finger Lakes+	5,554	20	110	--	--	70-84	Yes	Yes
Fulton-Montgomery	2,298	40	60	--	--	72-83	Yes	Yes
Genesee+	4,735	60	90	--	--	70-83	Yes	Yes
Hudson Valley+	8,934	45	119	--	--	75-86	No	Yes
Jefferson+	2,658	28	80	--	--	73-81	Yes	Yes
Mohawk Valley+	5,705	45	90	--	--	76-82	Yes	Yes
Monroe+	10,161	50	214	--	--	78-84	Yes	Yes
Nassau+	13,864	44	120	--	--	76-82	No	Yes
Niagara+	4,346	22	70	--	--	74-80	Yes	Yes
Onondaga+	8,545	53	225	--	--	75-78	Yes	Yes
Orange+	5,862	31	70	--	--	77-84	No	Yes
Schenectady+	4,015	25	80	--	--	72-84	Yes	Yes
Suffolk+	22,579	32	145	--	--	72-80	No	Yes
Ulster+	3,089	11	125	--	--	77-81	Yes	Yes
Westchester+	10,072	30	133	--	--	75-85	No	Yes

EOP is also available at SUNY Downstate Health Sciences University and Upstate Medical University.

\* The SAT ranges above represent combined evidence-based reading & writing and math scores. (The maximum possible total is 1600.)

\*\* Enrollment includes Health Science Centers.

+ EOP enrollment and/or academic profile contains 2020 Data.



# Educational Opportunity Program

NEW YORK STATE RESIDENTS ONLY

## What is it?

The State University of New York's Educational Opportunity Program provides access, academic support and financial aid to students who show promise for succeeding in college but who may not otherwise be offered admission. Available to first-time, full-time, matriculated students, the program supports students throughout their college careers within the University.

## Support Services

Educational Opportunity Program students receive both academic and financial support. Academic support services may include: personal counseling, academic advisement, tutoring, skill development workshops, supplemental instruction and mentoring. As part of the student's overall financial aid package, the Educational Opportunity Program provides modest financial aid to alleviate non-tuition expenses (e.g., books, supplies, etc.).

## Campus Participation

The Educational Opportunity Program is available at all SUNY campuses with the exception of: Cayuga County, Clinton, Columbia-Greene, Corning, Herkimer County, Jamestown, North Country, Rockland, Sullivan County and Tompkins Cortland Community Colleges.

## Fee Waiver

Students submitting applications for EOP consideration may qualify for application fee waivers for their first seven campus choices. If the applicant does not meet both academic and economic eligibility guidelines or, if the campus does not operate an Educational Opportunity Program, the student will be billed for the fee.

## Who is eligible?

To be eligible for admission to the Educational Opportunity Program a student must: 1) be a New York State resident for 12 months prior to enrollment; 2) require alternate admissions consideration; and 3) qualify as economically disadvantaged according to the guidelines indicated. In selecting students for the program, priority is given to applicants from historically disadvantaged backgrounds. Admission is subject to program capacity.

To be eligible for the program as a transfer, a student must have been enrolled in the EOP, CD/SEEK, HEOP or a similar program at his or her previous college. If the previous college did not have EOP or a similar program, the student may receive consideration for transfer eligibility and should notify the college to which he or she is transferring.

## Academic Eligibility

Academic eligibility will vary by campus. To view the EOP freshman profile for each campus, visit [www.suny.edu/eop-academics](http://www.suny.edu/eop-academics).

## Financial Eligibility

The table to the right lists financial guidelines for Educational Opportunity Program eligibility. To be determined economically disadvantaged, a student's household income must not exceed the amount shown for its size, or the student's circumstances must conform to one of the exceptions indicated. Eligibility guidelines may be adjusted slightly each year.

*NOTE: Applicants who are deemed ineligible for EOP may still qualify for admission and financial aid through other admissions processes.*

## EOP Income Guidelines 2022-23

Household Size (including head of household)	Total Annual Income
1	\$23,828
2	32,227
3	40,626
4	49,025
5	57,424
6	65,823
7	74,222
8	82,621*

\*Plus \$8,399 for each additional household member in excess of eight.

## Exceptions to Income Guidelines

- > The student's family is the recipient of Family Assistance or Safety Net payments through the New York State Office of Temporary and Disability Assistance; or through a county Department of Social Services; or Family Day Care payments through the New York State Office of Children and Family Assistance;
- > The student is in foster care as established by the court;
- > The student is a ward of the court or county.

# Excel on the Field

## Intercollegiate Athletics

	Baseball	Basketball	Bowling	Cross Country	Esports	Field Hockey	Football	Golf	Gymnastics	Ice Hockey	Lacrosse	Rowing	Skiing	Soccer	Softball	Swimming	Swimming/Diving	Tennis	Track & Field (Indoor)	Track & Field (Outdoor)	Volleyball	Wrestling
<b>NCAA Division I</b>																						
University at Albany	•	••		••		•	•				••			••	•				••	••	•	
Binghamton University	•	••		••				•			••			••	•				••	••	•	•
University at Buffalo		••		••			•							••	•				••	••	•	
Stony Brook University	•	••		••			•				••			••	•				••	••	•	•
<b>NCAA Division III</b>																						
Alfred State College	•	••		••							••			••	•				••	••	•	•
NYS Ceramics at Alfred U		••		••			•				••		••	••	•				••	••	•	•
The College at Brockport	•	••		••		•	•		•		••			••	•				••	••	•	•
Buffalo State		••		••			•				••			••	•				••	••	•	•
SUNY Canton	•	••		••							••			••	•				••	••	•	•
SUNY Cobleskill	•	••		••							••			••	•				••	••	•	•
SUNY Cortland	•	••		••		•	•		•		••			••	•				••	••	•	•
SUNY Delhi		••		••							••			••	•				••	••	•	•
Farmingdale State College	•	••		••							••			••	•				••	••	•	•
SUNY Fredonia	•	••		••							••			••	•				••	••	•	•
SUNY Geneseo	•	••		••		•					••			••	•				••	••	•	•
Maritime College	•	•		••			•				••		•	••	•				••	••	•	•
SUNY Morrisville		••		••		•	•				••			••	•				••	••	•	•
SUNY New Paltz	•	••		••		•					••			••	•				••	••	•	•
Old Westbury	•	••		••							••			••	•				••	••	•	•
SUNY Oneonta	•	••		••		•					••			••	•				••	••	•	•
SUNY Oswego	•	••		••		•					••			••	•				••	••	•	•
SUNY Plattsburgh	•	••		••							••			••	•				••	••	•	•
SUNY Potsdam	•	••		••							••			••	•				••	••	•	•
Purchase College	•	••		••							••			••	•				••	••	•	•
SUNY Polytechnic (Utica)	•	••		••							••			••	•				••	••	•	•
<b>NJCAA</b>																						
SUNY Adirondack	•	••	••					••			••			••	•				••	••	•	•
SUNY Broome	•	••		••							••			••	•				••	••	•	•
Cayuga	•	••		••				••			••			••	•				••	••	•	•
Clinton		••		••							••			••	•				••	••	•	•
Columbia-Greene	•	••		••							••			••	•				••	••	•	•
Corning	•	••		••	••						••			••	•				••	••	•	•
Dutchess	•	••		••							••			••	•				••	••	•	•
Erie	•	••	••	••			•				••			••	•				••	••	•	•
Fashion Institute of Technology				•							•							••	••	••	•	•
Finger Lakes	•	••		••							••			••	•				••	••	•	•
Fulton-Montgomery	•	••	••	••				••			••			••	•				••	••	•	•
Genesee	•	••		••				••			••			••	•				••	••	•	•
Herkimer County	•	••	••	••				••			••			••	•				••	••	•	•
Hudson Valley	•	••	••	••			•				••			••	•				••	••	•	•
Jamestown	•	••		••				•			••			••	•				••	••	•	•
Jefferson	•	••		••				••			••			••	•				••	••	•	•
Mohawk Valley	•	••	••	••				••			••			••	•				••	••	•	•
Monroe	•	••		••							••			••	•				••	••	•	•
Nassau	•	••		••				••			••			••	•				••	••	•	•
Niagara County	•	••		••			•				••			••	•				••	••	•	•
North Country		••		••							••			••	•				••	••	•	•
Onondaga	•	••		••				••			••			••	•				••	••	•	•
Orange County	•	••		••				••			••			••	•				••	••	•	•
Rockland	•	••	••	••				••			••			••	•				••	••	•	•
Schenectady County	•	••	••	••				••			••			••	•				••	••	•	•
Suffolk County	•	••	••	••				••			••			••	•				••	••	•	•
Sullivan County	•	••		••				••			••			••	•				••	••	•	•
Tompkins Cortland	•	••		••				••			••			••	•				••	••	•	•
Ulster County	•	••		••				••			••			••	•				••	••	•	•
SUNY Westchester	•	••	••	••				••			••			••	•				••	••	•	•
<b>USCAA</b>																						
Environmental Sci & Forestry		•		••				••						••					••	••		



# College Planning: 12th Grade

Want to know if you're on track in the college application process? This checklist shows you what you should be doing, and when.

When you complete steps marked with \* you may be eligible for College Board Opportunity Scholarships. Learn more at: [cb.org/opportunity](https://cb.org/opportunity).

## FALL

- Strengthen Your College List\***: Meet with a counselor about your college choices and, if you've not yet done so, download college applications and financial aid forms. Make sure you have a balanced list of academic safety, fit, and reach schools. Plan to visit as many of these colleges as possible.
- Create a master list or calendar that includes:**
  - Tests you'll take and their fees, dates, and registration deadlines
  - College application due dates
  - Required financial aid application forms and their deadlines (aid applications may be due before college applications)
  - Other materials you'll need (recommendations, transcripts, etc.)
  - Your high school's application processing deadlines
- Ask a counselor** to help you request a fee waiver if you can't afford application or test fees.
- Improve Your Score\***: Many seniors retake the SAT in the fall. Additional coursework and practice with Official SAT Practice on Khan Academy® since your last test could help you boost your performance. Plus you already know what to expect on test day.
- Be sure** to have your SAT scores sent to the colleges to which you are applying.
- Complete the FAFSA\***: To apply for most financial aid, you'll need to complete the FAFSA. Oct. 1 is the first day you can file the FAFSA.
- Complete the CSS Profile**: CSS Profile™ is an online application used by certain colleges and scholarship programs to determine eligibility for their aid dollars.
- Prepare** early decision/early action or rolling admission applications as soon as possible. Nov. 1–15: Colleges may require test scores and applications between these dates for early decision admission.
- Ask a counselor or teacher** for recommendations if you need them. Give each teacher or counselor an outline of your academic record and your extracurricular activities. For each recommendation, provide a stamped, addressed envelope and any college forms required.
- Write first drafts** and ask teachers and others to read them if you're submitting essays. If you're applying for early decision, finish the essays for that application now.
- Apply to College\***: Submit your applications to the schools that you want to attend.
- Ask counselors** to send your transcripts to colleges. Give counselors the proper forms at least two weeks before the colleges require them.

## WINTER

- Keep photocopies** as you finish, and send your applications and essays.
- Give the correct form** to your counselor if the college wants to see second-semester grades.
- Have your high school send a transcript**—it is sent separately by mail to colleges if you apply online to colleges.

## SPRING

- Keep active in school.** If you are waitlisted, the college will want to know what you have accomplished between the time you applied and the time you learned of its decision.
- Visit your final college before accepting.** You should receive acceptance letters and financial aid offers by mid-April. Notify your counselor of your choice. If you have questions about housing offers, talk to your counselor or call the college.
- Inform every college** of your acceptance or rejection of the offer of admission and/or financial aid by May 1. Colleges cannot require your deposit or your commitment to attend before May 1. Talk to your counselor or adviser if you have questions.
- Send your deposit** to one college only.
- Take any AP® Exams.** Show what you've learned in your AP classes. A successful score could even earn you credit, advanced placement, or both in college.
- Waitlisted by a college?** If you intend to enroll if you are accepted, tell the admission director your intent and ask how to strengthen your application. Need financial aid? Ask whether funds will be available if you're accepted.
- Work with a counselor** to resolve any admission or financial aid problems.
- Ask your high school** to send a final transcript to your college.
- Review your financial aid awards:** Not all financial aid awards are the same, so it's important to choose the aid package that's best for you and your family. Be sure to note what you have to do to continue receiving financial aid from year to year, and how your aid might change in future years.



The following are opportunities to learn more about financial aid:

- Mexico High School Open House and Financial Aid Night
  - October 6<sup>th</sup>, 6:00 – 8:00 pm
  - Representatives from SUNY Oswego will provide a financial aid presentation and answer general questions.
- SUNY is offering a college fair in person on September 30<sup>th</sup> at Onondaga Community College. Students and their families will be able to speak with SUNY campus representatives at this fair which is designed to provide information and answer questions regarding the college search process and all that is available for students on SUNY campuses. Use the QR code below to register. For more information visit [www.suny.edu/attend](http://www.suny.edu/attend)
  - September 30<sup>th</sup>, two sessions are being offered, beginning at 5:30pm and 7:00pm



- SUNY will also be hosting three virtual college fairs. At these fairs you will be able to meet with representatives from SUNY campuses to discuss academic offerings, financial aid, and more. Use the QR code below to register. For more information visit [www.suny.edu/attend](http://www.suny.edu/attend)
  - Thursday, October 5<sup>th</sup>, 6:00-8:00 pm
  - Thursday, October 7<sup>th</sup>, 5:00-7:00 pm
  - Sunday, October 17<sup>th</sup>, 1:00-3:00 pm



- **Visit your college(s) of interest’s website and sign up to receive more information directly.**

Tutorial and helpful links:

- Watch the tutorial at the link below for a step-by-step guide to completing the FAFSA.  
<https://sunyocc.financialaidtv.com/play/45863-2019-2020-fafsa-tutorial/fafsar-getting-started-2021-22>
- To view additional resources and helpful links regarding financial aid and scholarships visit [mexicocsd.org](http://mexicocsd.org), go to the Mexico High School page, click the student services link on the left-hand menu. Scroll down and click the icon that says “financial aid links.”
- For additional financial aid assistance and resources visit Higher Education Services Corporation (HESC) at [hesc.ny.gov](http://hesc.ny.gov) <https://www.hesc.ny.gov/>

Letter of Recommendation

Date I need letter by:

Please fill out this form as accurately and completely as possible. Don't be afraid to "brag" about yourself! Your admin, counselors, teachers and other professionals will use this information in recommending you for scholarships, college admissions, and other honors/awards and/or services. If at any time you feel you need more room to "brag" please use a separate sheet of paper and attach it to your brag sheet.

Full legal name

Name you go by

Date of birth

Home phone

Cell Phone

E-Mail address

List ALL activities in which you have participated in during high school. Include clubs, teams, musical groups, etc., and all positions held within those activities.

Activity

Grade (9, 10, 11, 12)

Office/ Position held

Activity	Grade (9, 10, 11, 12)	Office/ Position held

Awards and Honors:

Name of award

Reason for award

Year received

Name of award	Reason for award	Year received

Church and/or other youth group activities (e.g. Girl Scouts):

Where

Type of Activity

Years Involved

Where	Type of Activity	Years Involved

Plans after leaving high school: (Do Not Leave Blank)

College

Proposed Major:

List top three schools you plan to apply to:

---



---



Technical School      Proposed Major:  
List top three schools you plan to apply to:

Military      Branch:  
 Work      Where, doing what?

Career Goal: (What do you want to be when you "grow up"?)

1 <sup>st</sup> choice	2 <sup>nd</sup> choice	3 <sup>rd</sup> choice
------------------------	------------------------	------------------------

Any Work experience: (Past and present)

Employer	Position	Dates

**Community Service:** Many colleges and scholarship programs are now emphasizing community service. List ways you have given back to the community. Give dates, approximate hours spent and what you did.

Organization/ Location	Service Provided	Years	Hours

What do you consider your **strongest personal asset**?

What three **adjectives** best describe you?

Name three teachers who know you well and would speak highly of you

Is there anything else you would like for someone writing a recommendation to know about you? (Hardships you have overcome; accomplishments you're particularly proud of, etc.)

**IF ANY INFORMATION CHANGES DURING THE YEAR PLEASE UPDATE THIS FORM**

The above information is true and accurate to the best of my knowledge.

Signature

Date

## Scholarship information:

Go to [www.mexicocsd.org](http://www.mexicocsd.org)

- Click **High School, Student Services, Scholarships**
- **Dollars for Scholars** – start working on in Fall – don't hit submit until March.
  - Watch for important updates and read all emails for important information.

The screenshot shows the website for Mexico Academy & Central School District. The main navigation bar includes Home, About Us, District, Schools, Departments, and Calendars. The 'Scholarships' page is displayed, featuring a sidebar on the left with a list of school services. The main content area has a heading 'Scholarships' and a prominent link: 'START YOUR DOLLARS FOR SCHOLARS APPLICATION TODAY!'. Below this, there is information about the 'NY State's Tuition-Free College Information' and a section for 'LOCAL APPLICATIONS FOR MEXICO SENIORS'. On the right side of the page, a list of various scholarships is provided, including the Stephen Lynch Scholarship, Edward Albright Scholarship, NY State's Excelsior Scholarship, and several others. Handwritten annotations are present: 'Dollars for Scholars' with an arrow pointing to the application link, and 'Some Scholarships' with an arrow pointing to the list of scholarship names.

- There are **scholarships** listed on the **right side of the page (above)**. Those are some of the scholarships that are typically offered each year. They are subject to change. You can read through those and start working on essays so when they are available, you are ready to turn in the application and essay.



- Regularly **Check the file cabinet** in Student Services for Scholarships that typically start arriving in December. The influx of scholarships usually starts in Jan./Feb.



- **LISTEN FOR ANNOUNCEMENTS** on scholarships. For Announcements: Click High School and on the left you can read the announcements for the day.

The screenshot shows the website for Mexico Academy & Central School District. The main header includes the district logo and name, along with navigation links for Home, About Us, District, Schools, Departments, and Calendars. The 'Schools' section is active, displaying the page for Mexico High School. On the left sidebar, a list of links is visible, with 'Announcements' highlighted by a hand-drawn arrow and the handwritten text 'Am Announcements'. The main content area features a large image of a group of people, likely a school performance, and a 'Welcome to our Mexico High School website' message. On the right, there are sections for 'Today's E DAY', 'Building Calendar', 'Quick Links', and 'Upcoming Events'.

- **Other scholarship resources:**

- <https://www.fastweb.com/>
- <https://www.hesc.ny.gov/pay-for-college/financial-aid/types-of-financial-aid.html>
- [Scholly app](#)

# APPLY FOR THE FAFSA

## FAFSA APPLICATIONS OPEN OCTOBER 1<sup>st</sup>

The FAFSA asks for information about you (your name, date of birth, address, etc.) and about your financial situation. Depending on your circumstances (for instance, when you filed taxes or what tax form you used), you might need the following information as you fill out the FAFSA:

- Your Social Security number (it's important that you enter it correctly on the FAFSA)
- Your parents Social Security numbers if you are a dependent student
- Your driver's license number if you have one
- Your Alien Registration number if you are not a U.S. citizen
- Federal tax information or tax returns including IRS W-2 information, for you (and your spouse, if you are married), and for your parents if you are a dependent student:
  - IRS 1040, 1040A, 1040EZ
  - Foreign tax return and/or
  - Tax return for Puerto Rico, Guam, American Samoa, the U.S Virgin Islands, the Marshall Islands, the Federal States of Micronesia, or Palau
- Records of your untaxed income, such as child support received, interest income, and veterans noneducation benefits, for you and your parents if you are a dependent student
- Information on cash; savings and checking account balances; investments, including stocks and bonds and real estate but not including the home in which you live; and business and farm assets for you, and for your parents if you are a dependent student
- Keep these records! You may need them again. Do not mail your records to us.

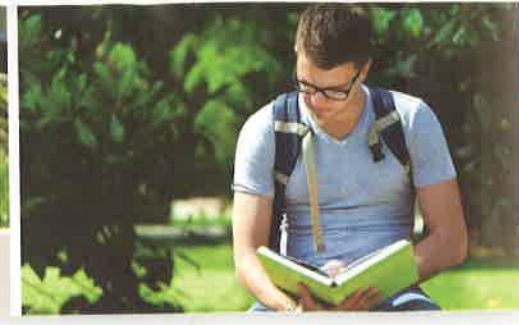
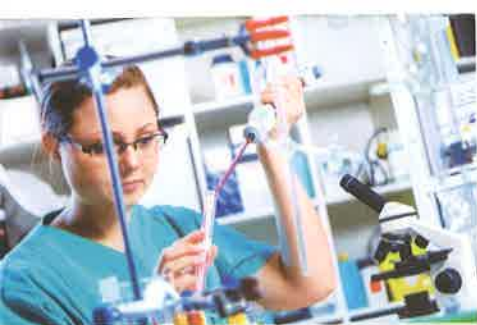
### HOW TO APPLY FOR FINANCIAL AID ONLINE

- Apply for an FSA ID for you and an FSA ID for your parent at <http://fsaid.ed.gov> (if you or a parent previously had a federal PIN you will be able to link the PIN to your FSA ID)
- Complete the 2021-2022 FAFSA online at [www.fafsa.gov](http://www.fafsa.gov). FAFSA will send you an email notification once your application is processed. To check on the status of your completed FAFSA go to the FAFSA website or contact the Financial Aid Office at the college you applied to.
- Once you have completed the FAFSA, follow the link and complete the online TAP application if you are applying to a college in NYS. If you miss the direct link to the TAP website, you can apply at [www.tapweb.org](http://www.tapweb.org).

Go to the following web page (<https://studentaid.gov/apply-for-aid/fafsa/filling-out>) to access live links and any updates to all of the above information.

For additional information, please search the Higher Education Services Corporation website using the search term "HESC Apply for Aid" or type in the following address: <https://www.hesc.ny.gov/pay-for-college/apply-for-financial-aid/apply-for-aid-start-here.html>

This "Start Here" page will provide you with an outline of the process for applying for financial aid.



# How to Apply for Student Financial Aid

Financial aid comes primarily from the federal and state governments and your college.

Federal aid includes Pell Grants, Work-Study, Perkins Loans, Supplemental Educational Opportunity Grants, and federal student loans.

New York State financial aid includes the Tuition Assistance Program (TAP), Excelsior Scholarships, Enhanced Tuition Awards, Aid for Part-Time Study (APTS), scholarships and other numerous special awards.

Financial aid from colleges can be in the form of institutional grants, scholarships, work programs, or loans.

**It all starts with completing the FAFSA – the Free Application for Federal Student Aid.**

## Before You Apply

### Get Your FSA ID

- Both you and a parent need Federal Student Aid Identification Numbers (FSA IDs) to complete and electronically sign your FAFSA and other federal student aid documents.
- Visit [fsaid.ed.gov](http://fsaid.ed.gov) to get your FSA ID.

**Get Your FSA ID Early!**

### Gather these Materials

- Student's driver's license
- Student's Social Security number
- For both student and parents:
  - Income tax returns
  - W-2 forms and other records of money earned
  - Current bank statements
  - Records of other untaxed income, such as child support received, IRA/pension deductions, veteran's benefits, or military allowances
  - Records of investments: stocks, bonds, etc.

### Get an Idea of Your Eligibility

Go to [fafsa.ed.gov](http://fafsa.ed.gov), click on "Thinking about College" and complete the online FAFSA4caster to see an estimate of your federal aid eligibility.

- Use the IRS Data Retrieval Tool through the online FAFSA to connect directly to the Internal Revenue Service for your tax data. Easy and efficient!
  - For the 2018-19 FAFSA, the IRS Data Retrieval Tool is available beginning in October 2017.
- If you completed a FAFSA in the previous year, you will receive a notice to go to your renewal FAFSA.

## Important Reminders

- Find out the financial aid deadlines at your college, and be sure to meet them.
- Apply for financial aid every year. Financial aid programs change and your situation may change. Any change may affect your eligibility.
- Don't pay for financial aid information that you can get for free — see your counselor or college advisor, or visit [hesc.ny.gov/myths](http://hesc.ny.gov/myths).
- Attend financial aid workshops to learn more about financial aid programs and completing applications. Check with your high school counselor and visit [StartHereGetThere.org](http://StartHereGetThere.org) in the fall for dates and locations.

**You must complete the FAFSA each year. File early to meet deadlines!**

## Complete the FAFSA

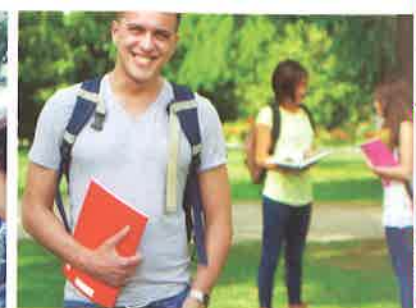
### Go to [hesc.ny.gov](http://hesc.ny.gov)

- Visit "Pay/Apply for Aid – Start Here" at [hesc.ny.gov](http://hesc.ny.gov) for step-by-step assistance in completing the FAFSA.
- Follow the link to the FAFSA application and complete online. (You can opt to complete a paper FAFSA. Go to [FAFSA.ed.gov](http://FAFSA.ed.gov) and select "FAFSA Filing Options" to download an application.)



**Higher Education Services Corporation**





## Apply for the New York State Tuition Assistance Program (TAP)

- ❑ If you are a New York State resident and include a New York school on your FAFSA, you should also apply for New York State aid online by using the New York State resident link on the FAFSA Submission Confirmation page.
- ❑ Information from your FAFSA and your family's calculated New York State taxable income will be pre-filled on your TAP application. Review the application information, change any incorrect items, complete any missing items, then submit the form.
- ❑ If you are a New York State resident and have listed a New York school on the FAFSA, but did NOT complete a TAP application online, you will automatically receive a notice from HESC reminding you to do so.
- ❑ If you have received a renewal FAFSA and have not completed the TAP application, you will receive notification from HESC directing you on the next step of the application process.
- ❑ You must apply for TAP and complete or renew the FAFSA every year.
- ❑ You can check the status of your TAP grant at [hesc.ny.gov](http://hesc.ny.gov).

**Check [hesc.ny.gov](http://hesc.ny.gov) for the latest information about completing your FAFSA and TAP applications.**

## What's Next?

- ❑ Shortly after filing your FAFSA, you will receive an email notice that your FAFSA has been processed and your Student Aid Report (SAR) is available for review. You access your SAR by logging on to [FAFSA.ed.gov](http://FAFSA.ed.gov) with your FSA ID. If corrections are needed, follow the instructions carefully and correct any missing or inaccurate information.
- ❑ If you have applied for TAP, you will receive an email regarding your TAP application status.
- ❑ Be sure to respond to any questions or requests for more information by the deadline indicated or you could lose your eligibility for financial aid.
- ❑ Your college financial aid office will provide you an award letter detailing the estimated aid you are eligible to receive based on your application. Accept or decline the offer of aid by the deadline. Supply any additional documents requested.
- ❑ If you decide to take a Federal Direct Student Loan, you must complete a master promissory note (MPN). Follow the instructions on your college award letter.



**Higher Education  
Services Corporation**

99 Washington Avenue, Albany, NY 12255 • [hesc.ny.gov](http://hesc.ny.gov)  
Andrew M. Cuomo, Governor



## ***We offer FREE help with:***

- ***Applications (college, certificate, and vocational programs)***
- ***Financial aid forms***
- ***School & res hall supplies***
- ***New school clothes***
- ***Assistance with housing deposits***

**onp•int**  
FOR COLLEGE

[onpointforcollege.org](http://onpointforcollege.org)

Contact Nicole Damboise at 315.744.2108 or  
[nicoledamboise@onpointforcollege.org](mailto:nicoledamboise@onpointforcollege.org)