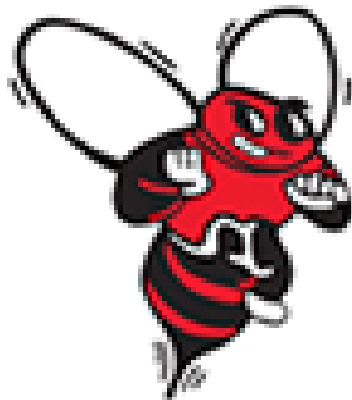


*Are there options that might provide program effective and cost-effective ways or patterns to organize how the K-12 program is implemented/delivered over the next five years?*



***BALDWINSVILLE CENTRAL  
SCHOOL DISTRICT***

**FUNDING THE FUTURE  
COMMUNITY ADVISORY  
COMMITTEE**

**MEETING**

**NOVEMBER 29, 2018**

**BAKER HIGH SCHOOL LIBRARY**

**6:00-8:30 PM**

**Agenda**

*“Custom tools and research to aid a school district in defining a vision and decision options for serving students in the future.”*

<b>BALDWINVILLE CENTRAL SCHOOL DISTRICT 'FUNDING THE FUTURE' ADVISORY COMMITTEE MEMBERS</b>			<b>November 29 Work/Discussion Groups</b>
Aleksanyan	Roman	<i>Parent of K, 1, 2</i>	Green Dot
Auth	Rev. Clifford H.	<i>Clergy</i>	Yellow Dot
Bernstein	Kevin	<i>Business person/chamber of commerce</i>	Red Dot
Brown	Alisha	<i>Parent of 10, 11, 12</i>	Blue Dot
Capilli	Nicole	<i>Parent of 6, 7</i>	Red Dot
Carr	Mike	<i>Business person/chamber of commerce</i>	Blue Dot
Cavino	Joseph	<i>Parent of 8, 9</i>	Yellow Dot
Chetney	Beth	<i>Durgee Junior High English Teacher</i>	Yellow Dot
Corrente	Tammi	<i>Secretary, Transportation Department</i>	Red Dot
Cronin	Cindy	<i>Durgee Junior High Principal</i>	Green Dot
D'Augustino	Gennaro	<i>Baker HS Spec. Ed. Teacher</i>	Blue Dot
Davis	Max	<i>HS Student</i>	Red Dot
Dayger	Sally	<i>Retiree of School District</i>	Red Dot
Demick	Katherine	<i>Parent of 3,4,5</i>	Blue Dot
Dias	Gerald	<i>Ray Middle School Spec. Ed. Teacher</i>	Green Dot
Grindle	David	<i>Parent of 10, 11, 12</i>	Green Dot
Keim	Joanne	<i>'empty-nester'</i>	Yellow Dot
Kinch	Erin	<i>Parent of 3,4,5</i>	Yellow Dot
Ladd	Steve	<i>Business person/chamber of commerce</i>	Yellow Dot
Loffredo	Joe	<i>Retiree of School District</i>	Blue Dot
Maddaloni	Laurie	<i>Parent of 8, 9</i>	Green Dot
Manning	Mark	<i>Community Member</i>	Green Dot
Mattoon	Brittany	<i>Parent of K, 1, 2</i>	Red Dot
May	Brian	<i>Legislator</i>	Red Dot
Miller	Deb	<i>Business person/chamber of commerce</i>	Green Dot
Morgan	Amy	<i>1<sup>st</sup> Grade Teacher at VanBuren</i>	Red Dot
Nahorney	Danielle	<i>Van Buren Elementary Principal</i>	Yellow Dot
Nalli	Rocco	<i>Director, Spec. Ed.</i>	Red Dot
Nicholson	Lyndsey	<i>Parent of 6, 7</i>	Blue Dot
Pelcher	Stephanie	<i>'empty-nester'</i>	Green Dot
Penhollow	Nora	<i>HS Student</i>	Blue Dot
Ream	Jon	<i>Pre-School parent</i>	Red Dot
Ream	Krystal	<i>Pre-School parent</i>	Blue Dot
Saracini	Joe	<i>Town Supervisor - Lysander</i>	Yellow Dot
Schraven	Sam	<i>President Support Union; HS Job Coach</i>	Blue Dot
Smith	Sydney	<i>HS Student</i>	Green Dot
Williams	MaryAnne	<i>Business person/chamber of commerce</i>	Yellow Dot
Yando	Julie	<i>2<sup>nd</sup> Grade Teacher at Reynolds</i>	Yellow Dot

**NOVEMBER 29, 2018 AGENDA**

*(Please put cell phones on vibrate. If family or work needs your attention, please feel free to step into the adjacent hallway. Your volunteer time is appreciated--family and work responsibilities must come first.)*

**A. Welcome!**

**PURPOSE OF THE SUB-GROUP APPROACH:**

Tonight the 38 advisory members are organized into four sub-groups. The purpose of the sub-groups is to enable as much data-driven discussion among all of the Advisory Committee members as data sets and information are prepared to accomplish the *Program Implementation Options Study*.

The sub-group members represent diverse stakeholders and diverse residence locations in the school district. All members are taxpayers and are of the community served by the Baldwinsville School District. Rich discussion and sharing of perceptions within the sub-groups and when we reconvene as the whole committee is of high value. The role of the Advisory Committee as a steering committee to help me prepare the study of program implementation options is enhanced as all 38 community members share perceptions and analyze the various data elements included in the study.

Please share the discussion time in the groups as equitably as possible. Please help ensure that all have the opportunity to share their perceptions, insights, and perspectives about the data and information. Going ‘round robin’ to initially start a discussion/analysis, checking for understanding after a member shares a thought, and helping the group summarize what has been shared in a written list of items to use when we convene the whole committee together are some possible approaches. The diverse backgrounds and experience of each member is a valued characteristic of the *Baldwinsville Funding the Future Community Advisory Committee*.

Thank you. Your time and work together is valued and appreciated.



**B. BASIS FOR SHORT-TERM AND LONG-TERM PLANNING**

Presentation and Discussion of the Program Vision of the Baldwinsville Central School Program

District Staff presenting and leading the discussion about Program Vision:

Matt McDonald	Superintendent
Joe DeBarbieri	Deputy Superintendent
James Rodens	Assistant Superintendent

## **The goal of Meeting Two:**

*Discuss and begin to list insights and perspectives about: How might the Program Vision of the Baldwinsville School District influence the ‘doable’ options for delivery of the program and the use of the current school buildings in the future?*

### **C. Meeting Two of the ‘Funding the Future’ Community Advisory Committee:**

- **6:00-6:45 The Baldwinsville CSD Program Vision**
- **6:45-7:30 Preliminary findings of the *Pupil Capacity Study***
- **7:30-8:00 Work Group Discussion/Analysis**  
Insights and perspectives of how might the Program Vision of the School District influence the ‘doable’ options for delivery of the program and the use of the current school buildings in the future with regard to:
  - ✓ **Instructional Space**
  - ✓ **Instructional Support Space**
  - ✓ **Grade Level School Building Configurations**
  - ✓ **Other.....**
- **8:00-8:30 Sharing of insights**

In order to help ensure that all perceptions of individual advisory committee members are noted, a ‘no-carbon-needed’ note sheet is provided. If you wish, please list program vision considerations/characteristics that may have not been listed in summary discussion. Please give Paul the top sheet and keep the bottom copy for your notes.

### **D. Meeting Three of the Community Advisory Committee:**

**Topic:** Preliminary findings of the *Enrollment Projection/Demographic Study*

How might the findings of the *Enrollment/Demographic Study* and the findings of the *Pupil Capacity Study* influence the ‘doable’ options for delivery of the program and the use of current facilities in the future?

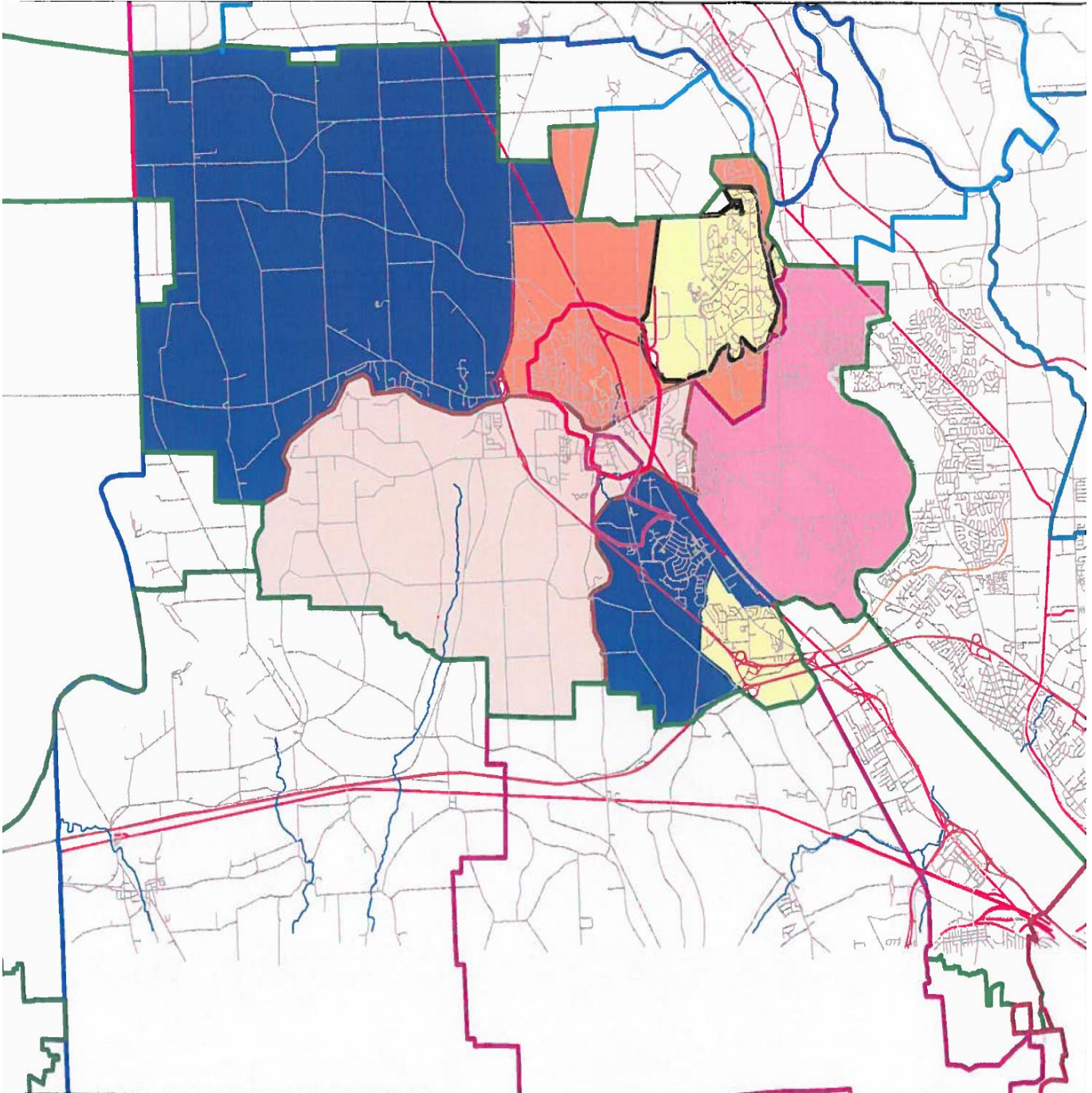
Please leave your nametag for use at our next meeting. Thanks.

Please use this special email address for the Committee Members if you wish to contact me to ask a question or to add insights about the program vision of the school district and how it might influence possible delivery options for the future. Thank you.  
[Bvilleplanning@SES-StudyTeam.org](mailto:Bvilleplanning@SES-StudyTeam.org)

*Thank you for your time, help, and support  
of the Baldwinsville Central School District and the pupils it serves.  
Please drive home safely.*

*“Custom tools and research to aid a school district in defining a vision and  
decision options for serving students in the future.”*

**BALDWINSVILLE CENTRAL SCHOOL DISTRICT MAP OF  
ELEMENTARY ATTENDANCE ZONES**



**(Blue) REYNOLDS ELEMENTARY, (Pink) PALMER ELEMENTARY, (Yellow)  
MCNAMARA ELEMENTARY, (Orange) ELDEN ELEMENTARY,  
(Light Pink) VANBUREN ELEMENTARY**

*“Custom tools and research to aid a school district in defining a vision and  
decision options for serving students in the future.”*