

*Are there options that might provide program effective and cost-effective ways or patterns to organize how the K-12 program is implemented/delivered over the next five years?*



***BALDWINSVILLE CENTRAL  
SCHOOL DISTRICT***

**FUNDING THE FUTURE  
COMMUNITY ADVISORY  
COMMITTEE**

**MEETING  
WEDNESDAY  
FEBRUARY 6, 2019**

**BAKER HIGH SCHOOL LIBRARY**

**6:00-8:30 PM**

**Agenda**

*“Custom tools and research to aid a school district in defining a vision and decision options for serving students in the future.”*

| <b>BALDWINVILLE CENTRAL SCHOOL DISTRICT 'FUNDING THE FUTURE' ADVISORY COMMITTEE MEMBERS</b> |                     |   | <b>November 29<br/>Work/Discussion<br/>Groups</b> |
|---|---------------------|---|---|
| Aleksanyan  | Roman               | <i>Parent of K, 1, 2</i>                        | Green Dot   |
| Auth  | Rev.<br>Clifford H. | <i>Clergy</i>                                   | Yellow Dot  |
| Bernstein   | Kevin               | <i>Business person/chamber of commerce</i>      | Red Dot   |
| Brown   | Alisha              | <i>Parent of 10, 11, 12</i>                     | Blue Dot  |
| Capilli   | Nicole              | <i>Parent of 6, 7</i>                           | Red Dot   |
| Carr  | Mike                | <i>Business person/chamber of commerce</i>      | Blue Dot  |
| Cavino  | Joseph              | <i>Parent of 8, 9</i>                           | Yellow Dot  |
| Chetney   | Beth                | <i>Durgee Junior High English Teacher</i>       | Yellow Dot  |
| Corrente  | Tammi               | <i>Secretary, Transportation Department</i>     | Red Dot   |
| Cronin  | Cindy               | <i>Durgee Junior High Principal</i>             | Green Dot   |
| D'Augustino   | Gennaro             | <i>Baker HS Spec. Ed. Teacher</i>               | Blue Dot  |
| Davis   | Max                 | <i>HS Student</i>                               | Red Dot   |
| Dayger  | Sally               | <i>Retiree of School District</i>               | Red Dot   |
| Demick  | Katherine           | <i>Parent of 3,4,5</i>                          | Blue Dot  |
| Dias  | Gerald              | <i>Ray Middle School Spec. Ed. Teacher</i>      | Green Dot   |
| Grindle   | David               | <i>Parent of 10, 11, 12</i>                     | Green Dot   |
| Keim  | Joanne              | <i>'empty-nester'</i>                           | Yellow Dot  |
| Kinch   | Erin                | <i>Parent of 3,4,5</i>                          | Yellow Dot  |
| Ladd  | Steve               | <i>Business person/chamber of commerce</i>      | Yellow Dot  |
| Loffredo  | Joe                 | <i>Retiree of School District</i>               | Blue Dot  |
| Maddaloni   | Laurie              | <i>Parent of 8, 9</i>                           | Green Dot   |
| Manning   | Mark                | <i>Community Member</i>                         | Green Dot   |
| Mattoon   | Brittany            | <i>Parent of K, 1, 2</i>                        | Red Dot   |
| May   | Brian               | <i>Legislator</i>                               | Red Dot   |
| Miller  | Deb                 | <i>Business person/chamber of commerce</i>      | Green Dot   |
| Morgan  | Amy                 | <i>1<sup>st</sup> Grade Teacher at VanBuren</i> | Red Dot   |
| Nahorney  | Danielle            | <i>Van Buren Elementary Principal</i>           | Yellow Dot  |
| Nalli   | Rocco               | <i>Director, Spec. Ed.</i>                      | Red Dot   |
| Nicholson   | Lyndsey             | <i>Parent of 6, 7</i>                           | Blue Dot  |
| Penhollow   | Nora                | <i>HS Student</i>                               | Blue Dot  |
| Ream  | Jon                 | <i>Pre-School parent</i>                        | Red Dot   |
| Ream  | Krystal             | <i>Pre-School parent</i>                        | Blue Dot  |
| Saracini  | Joe                 | <i>Town Supervisor - Lysander</i>               | Yellow Dot  |
| Schraven  | Sam                 | <i>President Support Union; HS Job Coach</i>    | Blue Dot  |
| Smith   | Sydney              | <i>HS Student</i>                               | Green Dot   |
| Williams  | MaryAnne            | <i>Business person/chamber of commerce</i>      | Yellow Dot  |
| Yando   | Julie               | <i>2<sup>nd</sup> Grade Teacher at Reynolds</i> | Yellow Dot  |

## FEBRUARY 6, 2019 AGENDA

*(Please put cell phones on vibrate. If family or work needs your attention, please feel free to step into the adjacent hallway. Your volunteer time is appreciated--family and work responsibilities must come first.)*

### A. Welcome!

#### **The goal of Meeting Three:**

*Identify insights and perspectives about how might the “bones of the buildings” data, the pupil capacities of the school buildings, and the findings of the enrollment projection study influence the ‘doable’ options for delivery of the program and the use of the current school buildings in the future.*

### B. King and King Architects

Information about the “bones of the buildings” and perspective about building conditions, estimated capital upgrades, and future viability to deliver the program.

### C. Draft Findings of the Enrollment Projection/Demographic Study and preliminary review of future enrollments with current pupil capacities of the Baldwinsville school buildings.

What can be initially inferred about future program delivery options based on the draft findings of the initial findings of the *Enrollment/Demographic Projection Study* and the *Pupil Capacity Study*?

### D. Report of the results of the *Planning for the Future Workshops*.

### E. Next meeting: February 27

- ✓ Sharing of data compiled by Paul after visiting the schools.
- ✓ Community Advisory Committee initial identification/discussion of possible ‘doable’ scenario options to deliver the program in three years.

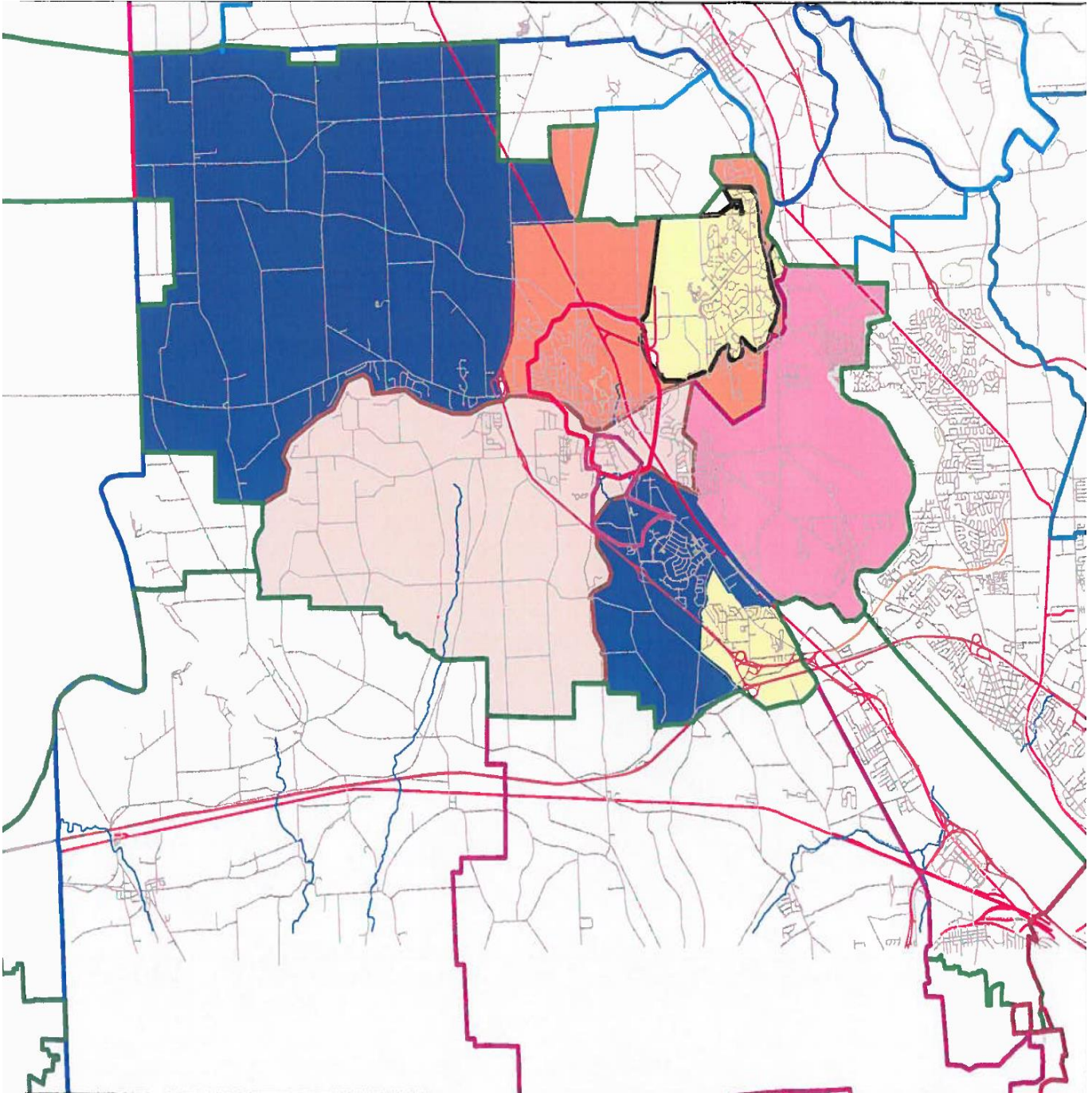
Please leave your nametag for use at our next meeting. Thanks.

Please use this special email address for the Committee Members if you wish to contact me to ask a question or to add insights about the program vision of the school district and how it might influence possible delivery options for the future. Thank you.

[Bvilleplanning@SES-StudyTeam.org](mailto:Bvilleplanning@SES-StudyTeam.org)

*Thank you for your time, help, and support  
of the Baldwinsville Central School District and the pupils it serves.  
Please drive home safely.*

**BALDWINVILLE CENTRAL SCHOOL DISTRICT MAP OF  
ELEMENTARY ATTENDANCE ZONES**



**(Blue) REYNOLDS ELEMENTARY, (Pink) PALMER ELEMENTARY, (Yellow)  
MCNAMARA ELEMENTARY, (Orange) ELDEN ELEMENTARY,  
(Light Pink) VANBUREN ELEMENTARY**

*“Custom tools and research to aid a school district in defining a vision and  
decision options for serving students in the future.”*