



***BALDWINSVILLE CENTRAL  
SCHOOL DISTRICT***

**FUNDING THE FUTURE  
COMMUNITY ADVISORY  
COMMITTEE**

**MEETING**

**SEPTEMBER 27, 2018**

**BAKER HIGH SCHOOL LIBRARY**

**6:00 PM**

**Agenda**

*“Custom tools and research to aid a school district in defining a vision and decision options for serving students in the future.”*

Matthew J. McDonald  
Superintendent of Schools



James J. Rodems  
Assistant Superintendent for  
Management Services  
29 East Oneida Street  
Baldwinsville, NY 13027  
315-638-6055(Office), 315-635-3970 (Fa

September 2018

Dear Baldwinsville Central School District Community Member:

The Baldwinsville Central School District is embarking on an interesting and comprehensive planning process over the next 12 to 18 months. We call this process **Funding the Future**. We are forming a Community Focus Group to help the planning.

The make-up of the Focus Group is a reflection of the Baldwinsville Central School District community. There are parents, residents without children, 'empty-nesters', retirees, employees, students, business folks and local political leaders. Every member is a District resident. The limit on District employees is 25%. There are approximately 40 members on the Focus Group. There are no current Board members or District central administrators on the Focus Group. The Focus Group will assist the consultant, Dr. Paul Seversky, as a 'steering committee'. The Focus Group will meet on a regular basis with him to offer perspectives, insights, and ask clarifying questions about baseline district data to answer the study question. Dr. Seversky has helped over 25 school districts answer the study question being asked by Baldwinsville:

*ARE THERE OPTIONS THAT MIGHT PROVIDE EFFECTIVE WAYS OR PATTERNS TO ORGANIZE HOW THE K-12 PROGRAM IS IMPLEMENTED/DELIVERED OVER THE NEXT SEVERAL YEARS?*

The role of the consultant is to "hold up a mirror" to data about the school district, organize the data without bias; and to identify (as guided by the data) possible options and opportunities and challenges of various scenarios to implement/deliver the Baldwinsville program in the future. The role is accomplished with transparency of the data; no bias toward particular possible options; and without advocacy of which options, if any, should be implemented.

The study prepared by the consultant with the help of the Focus Group will include a set of options for review and discussion by the Board of Education. Decisions regarding facilities and District organization are the responsibility of the Board of Education. Providing a series of 'doable' options to the Community and the Board will help the Board make an informed data-driven decision for the future of the Baldwinsville Central School District.

Thank you for considering joining this Focus Group to help school district long-range planning. We will try and keep most meetings during week days. However, touring the buildings will probably take place on a Saturday and involve a District bus taking the Advisory Committee to the eight school buildings. My e-mail is [jrodems@bville.org](mailto:jrodems@bville.org).

Cordially,

Jamie Rodems  
Assistant Superintendent for Management Services

| <b>BALDWINVILLE CENTRAL SCHOOL DISTRICT 'FUNDING THE FUTURE' ADVISORY COMMITTEE MEMBERS (9/27)</b> |                  |   |
|--|------------------|---|
| Aleksanyan   | Roman            | <i>Parent of K, 1, 2</i>                        |
| Auth   | Rev. Clifford H. | <i>Clergy</i>                                   |
| Bernstein  | Kevin            | <i>Business person/chamber of commerce</i>      |
| Brown  | Alisha           | <i>Parent of 10, 11, 12</i>                     |
| Capilli  | Nicole           | <i>Parent of 6, 7</i>                           |
| Carr   | Mike             | <i>Business person/chamber of commerce</i>      |
| Cavino   | Joseph           | <i>Parent of 8, 9</i>                           |
| Chetney  | Beth             | <i>Durgee Junior High English Teacher</i>       |
| Corrente   | Tammi            | <i>Secretary, Transportation Department</i>     |
| Cronin   | Cindy            | <i>Durgee Junior High Principal</i>             |
| D'Augustino  | Gennaro          | <i>Baker HS Spec. Ed. Teacher</i>               |
| Davis  | Max              | <i>HS Student</i>                               |
| Dayger   | Sally            | <i>Retiree of School District</i>               |
| Demick   | Katherine        | <i>Parent of 3,4,5</i>                          |
| Dias   | Gerald           | <i>Ray Middle School Spec. Ed. Teacher</i>      |
| Grindle  | David            | <i>Parent of 10, 11, 12</i>                     |
| Keim   | Joanne           | <i>'empty-nester'</i>                           |
| Kinch  | Erin             | <i>Parent of 3,4,5</i>                          |
| Ladd   | Steve            | <i>Business person/chamber of commerce</i>      |
| Loffredo   | Joe              | <i>Retiree of School District</i>               |
| Maddaloni  | Laurie           | <i>Parent of 8, 9</i>                           |
| Manning  | Mark             | <i>Community Member</i>                         |
| Mattoon  | Brittany         | <i>Parent of K, 1, 2</i>                        |
| May  | Brian            | <i>Legislator</i>                               |
| Miller   | Deb              | <i>Business person/chamber of commerce</i>      |
| Morgan   | Amy              | <i>1<sup>st</sup> Grade Teacher at VanBuren</i> |
| Nahorney   | Danielle         | <i>Van Buren Elementary Principal</i>           |
| Nalli  | Rocco            | <i>Director, Spec. Ed.</i>                      |
| Nicholson  | Lyndsey          | <i>Parent of 6, 7</i>                           |
| Pelcher  | Stephanie        | <i>'empty-nester'</i>                           |
| Penhollow  | Nora             | <i>HS Student</i>                               |
| Ream   | Jon              | <i>Pre-School parent</i>                        |
| Ream   | Krystal          | <i>Pre-School parent</i>                        |
| Saracini   | Joe              | <i>Town Supervisor - Lysander</i>               |
| Schraven   | Sam              | <i>President Support Union; HS Job Coach</i>    |
| Smith  | Sydney           | <i>HS Student</i>                               |
| Williams   | MaryAnne         | <i>Business person/chamber of commerce</i>      |
| Yando  | Julie            | <i>2<sup>nd</sup> Grade Teacher at Reynolds</i> |

## SEPTEMBER 27, 2018 AGENDA

*(Please put cell phones on vibrate. If family or work needs your attention, please feel free to step into the adjacent hallway. Your volunteer time is appreciated--family and work responsibilities must come first.)*

### A. Welcome and Thank You!

Victor Jenkins, President Board of Education; Joan Reeves Vice-President Board of Education; Matthew McDonald, Superintendent

### B. Who is here today?

- ✓ Please turn to someone in your work group that you may not have met before or may not know very well.
- ✓ Please ask three questions of each other and write down the answers:
  - What part of the school district do you live?
  - What community constituency do you represent?
  - Why did you want to be a part of the Baldwinsville School 'Funding the Future' Community Advisory Committee?
- ✓ We will take a few moments for each person to introduce the person 'interviewed' to the Advisory Committee.

### C. *Planning for the Future, a workshop*

The Baldwinsville Central School District is diligently engaged in its ongoing short term and long term planning regarding the future vision of the instructional program K through grade 12.

As a next step of its comprehensive planning process, the Board is engaging the professional 'guest outsider' services of the SES Study Team, LLC. The SES Study Team in an unbiased, non-advocacy manner will 'hold up a mirror' to varied types of school district data. The Study Team is responsible to prepare three studies: an *Enrollment Projection/Demographic Study*, a *Pupil Capacity Study*, and a *Program Implementation Study* of possible options for consideration by the School District and its community. The 'Funding the Future' Community Advisory Committee serves as a 'steering committee' resource for The SES Study Team as the studies are developed by SES.

The mission is to identify *possible 'doable' options* the Board and district *may* want to implement or adapt to deliver the program envisioned by the district with quality, and as cost-effectively as possible with the existing school building assets.

The Board of Education and Administration have no pre-conceived options or conclusions about the findings of the *Program Implementation Study*.

From meeting-to-meeting and from time-to-time, Administration members and/or Board of Education members may stop by to say 'hello' and to listen to the work of the Advisory Committee. They are not appointed working members of the Advisory Committee and do not take part in the work/discussion/analysis of the Advisory Committee.

**PROGRAM IMPLEMENTATION STUDY QUESTION:**

**ARE THERE OPTIONS THAT MIGHT PROVIDE PROGRAM EFFECTIVE AND COST-EFFECTIVE WAYS OR PATTERNS TO ORGANIZE HOW THE K-12 PROGRAM IS IMPLEMENTED/DELIVERED OVER THE NEXT FIVE YEARS?**

Advisory Committee Workshop Task; Answer: *What are the key questions/data that our school community needs to answer/discuss about how best to organize and deliver the grades kindergarten through grade twelve program over the next five years?*

- Outcomes:*
1. A rank-ordered tool that the district can use to focus their continued discussions, analysis, and actions.
  2. A blueprint for the study and for other district leadership analysis and research.

**D. Scope, Sequence of the Study and Roles of Key Participants**

**E. Meeting Two of the ‘Funding the Future’ Community Advisory Committee**

**Topic:** What is the Program Vision of the Baldwinsville Central School District?

What are insights and perspectives about how might the Program Vision of the School District influence the delivery of instruction options regarding pedagogy and the use of the current school buildings in the future?

Within the next 10 days, Jamie will email to announce the next meeting. An attempt will be made to rotate the weekday evening when each meeting is scheduled to help accommodate the diverse schedules of the members of the Advisory Committee.

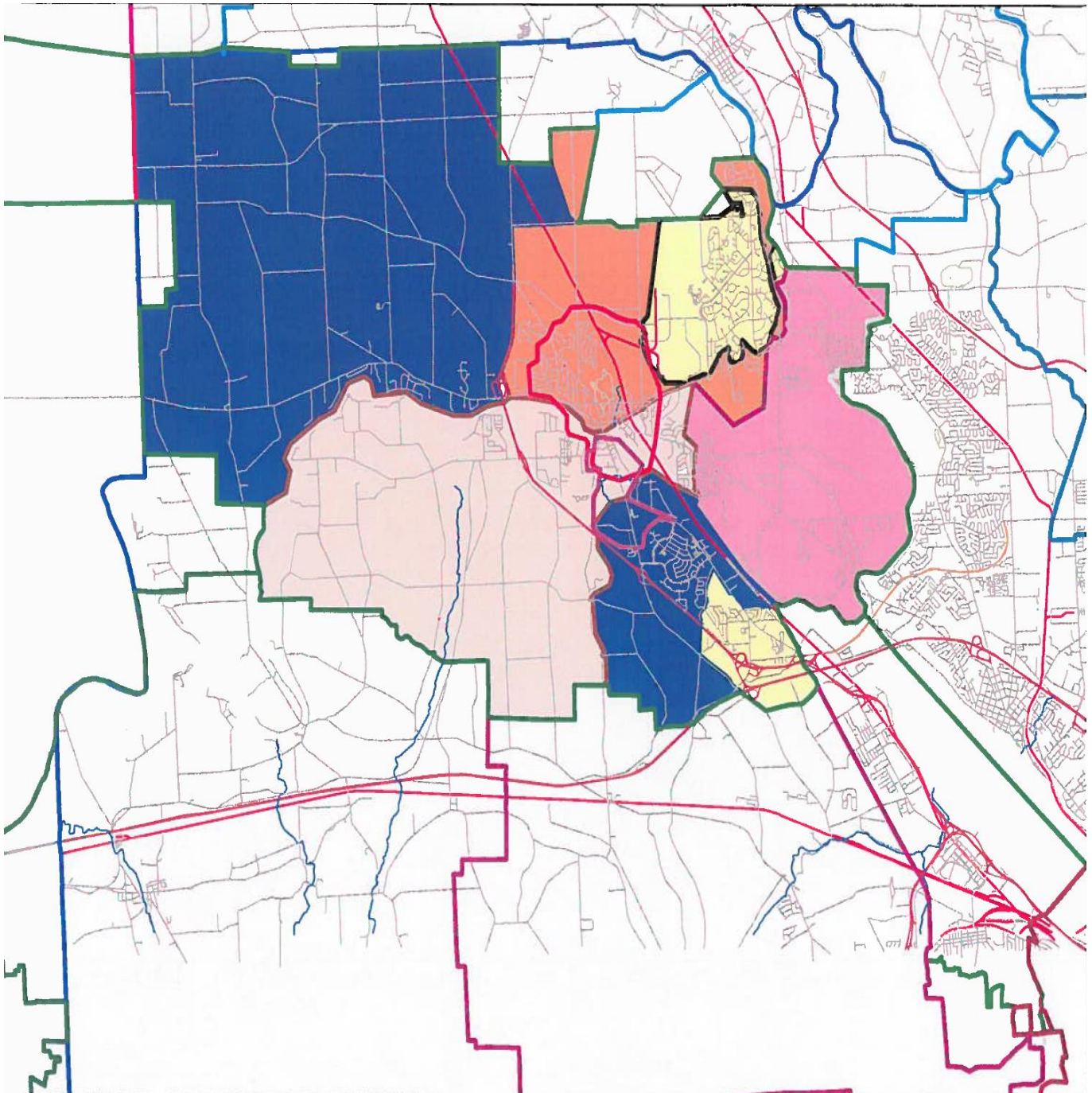
***Thank you for your time, help, and support  
of the Baldwinsville Central School District and the pupils it serves.***

***Please drive home safely.***

Please use this special email address for the Committee Members if you wish to contact me to ask a question or to provide insights. Thank you.

[Bvilleplanning@SES-StudyTeam.org](mailto:Bvilleplanning@SES-StudyTeam.org)

**BALDWINVILLE CENTRAL SCHOOL DISTRICT MAP OF  
ELEMENTARY ATTENDANCE ZONES**



**(Blue) REYNOLDS ELEMENTARY, (Pink) PALMER ELEMENTARY, (Yellow)  
MCNAMARA ELEMENTARY, (Orange) ELDEN ELEMENTARY,  
(Light Pink) VANBUREN ELEMENTARY**