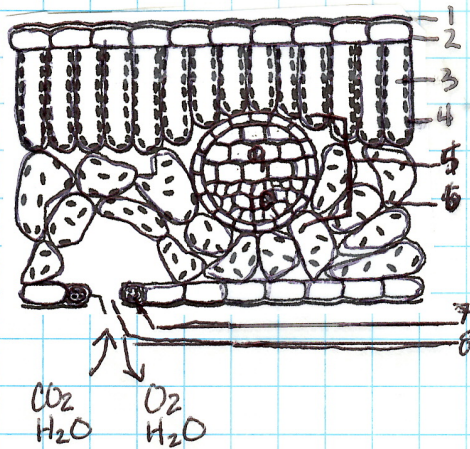


- ♂ A - Anther
- B - Petal
- ♂ C - Filament
- D - Sepal
- ♀ E - Stigma
- ♀ F - style
- ♀ G - Ovule → seed
- ♀ H - Ovary → fruit
- I - Receptacle

Pollination
 self - (exact copy)
 cross - (variation)

Double fertilization → Food
 → Zygote
 pollen (sperm) meets egg
 by way of pollen tube
 and also meets polar body

Meiosis - makes eggs + sperm
 (ovule) (pollen)

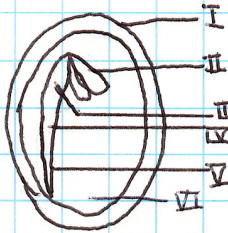


- 1 - Cuticle
- 2 - upper Epidermis
- 3 - Palisade mesophyll
- 4 - Chloroplast
- 5 - Vascular bundle
- 6 - Spongy mesophyll
- 7 - Guard cell
- 8 - Stomate
- 9-10 - Xylem and phloem

Vascular tissue trans.
 Xylem ↑ water
 Phloem ↓ food

- Roots -
- Anchor
- Absorb
- Food

Water (H₂O)
 + minerals
 move in by
 ROOT PRESSURE

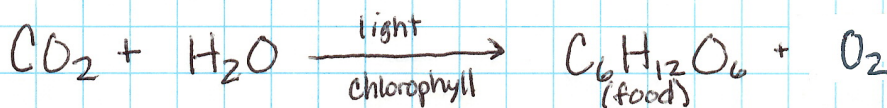


- I - seed coat
- II - Plumal
- III - Epicotyl
- IV - Hypocotyl
- V - Radical
- VI - cotyledon

Germinate - Grow due to auxin

Seeds need H₂O, warmth & O₂

Photosynthesis = Autotrophic Nutrition - Chloroplast - Chlorophyll



Hormones - Auxin
 Tropism - + moves to
 - moves away
 hydro
 geo
 photo

[GREEN]
 what you see is reflected
 (Not used)

What is absorbed is used
[RED and BLUE]

