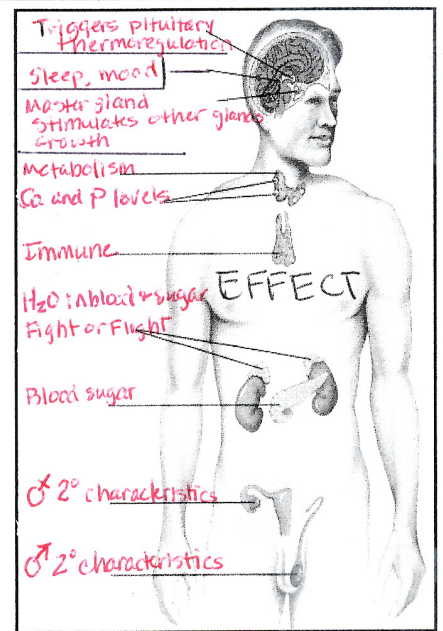
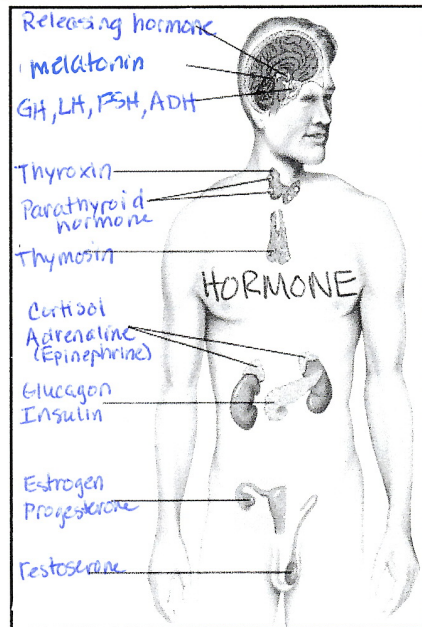
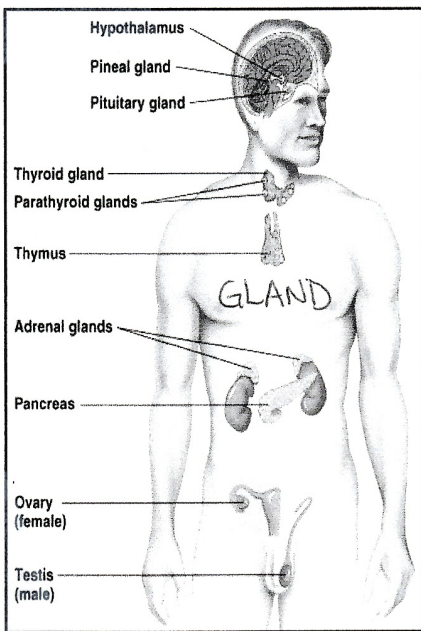


Endocrine - ductless glands that release hormones into the bloodstream to activate target cells (cell receptor). Slow to travel but can have long term effects.



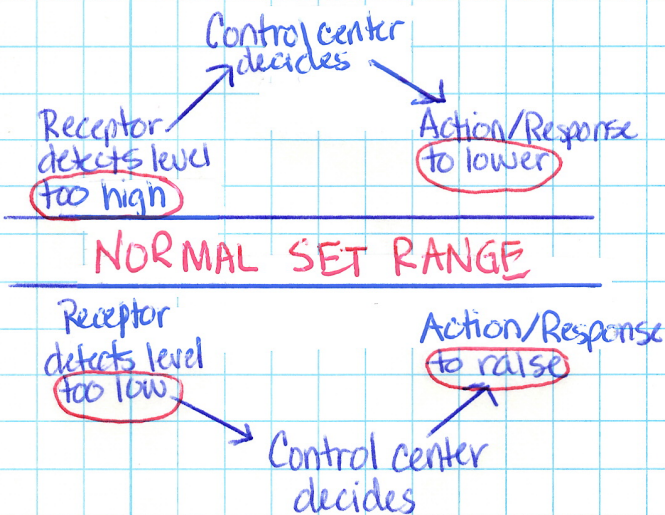
Levels of hormones regulated by **FEEDBACK** mechanism.

Cycle where one "action" influences another "action" to maintain **HOMEOSTASIS** (balance)

**+** FEEDBACK - action **Increases** more secretion of hormone  
Ex. Oxytocin and childbirth.

Uterus contraction produces oxytocin from pituitary. More oxytocin leads to more contractions with more strength.

**-** FEEDBACK - action **Decreases** the secretion of hormone that initiated action  
Ex. Blood glucose, Blood pressure, Blood pH, body temperature, thyroxin level et



MALFUNCTIONS	
Goiter	Acromegaly
Diabetes	Giantism
Cretinism	Dwarfism
Hypothyroidism	Cushing's disease
Hyperthyroidism	Addison's disease