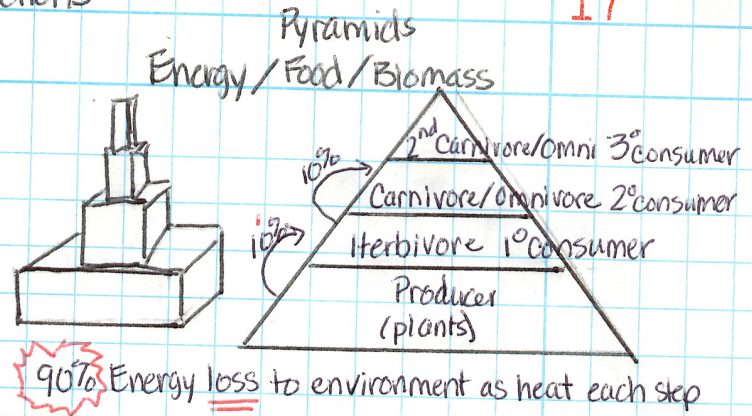
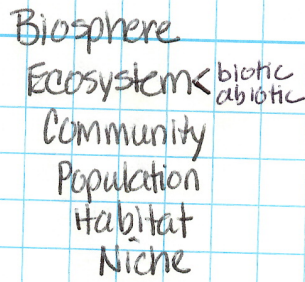
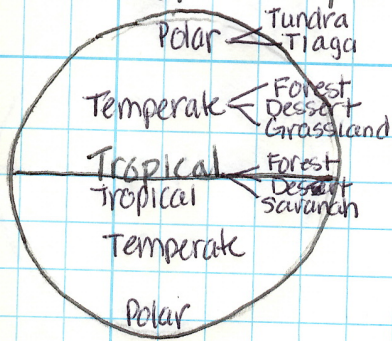


# Ecology - Study of environment + interactions

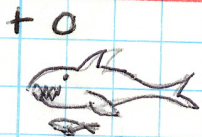


## Symbiotic Relationships

### Mutualism



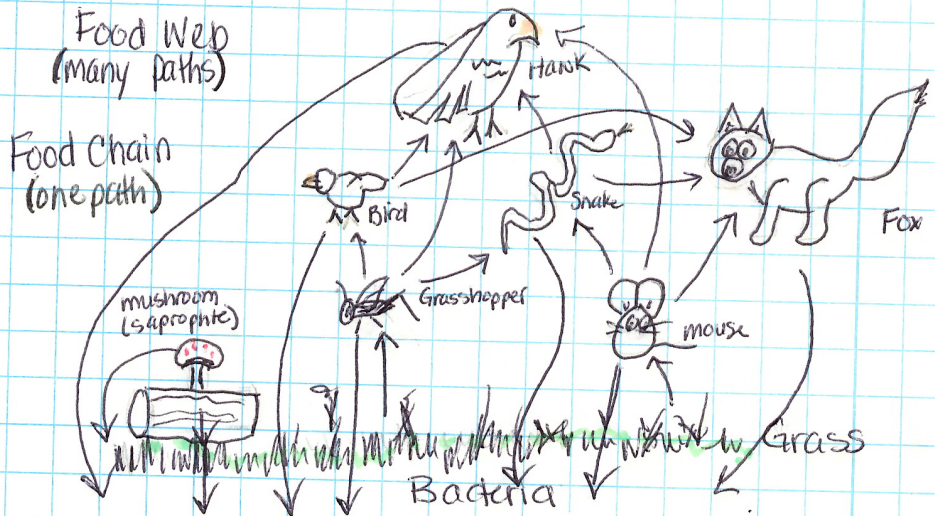
### Commensalism



### Parasitism



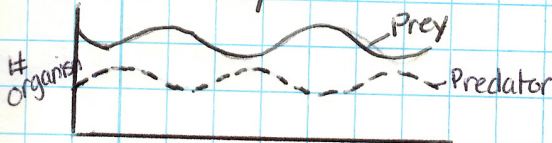
## Interactions



Food Chain (one path)

Food Web (many paths)

## Predator/Prey



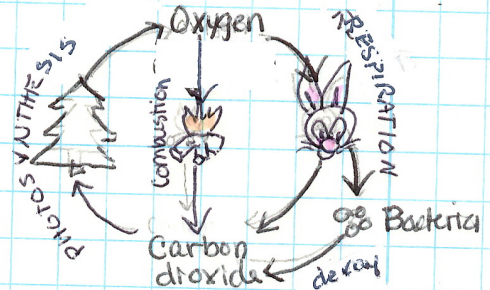
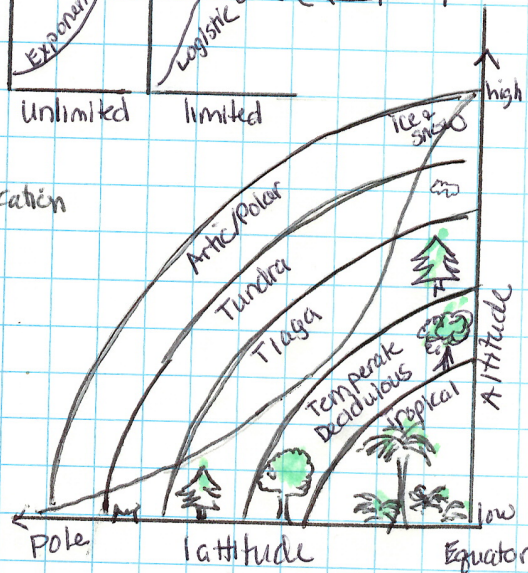
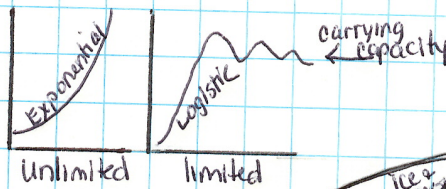
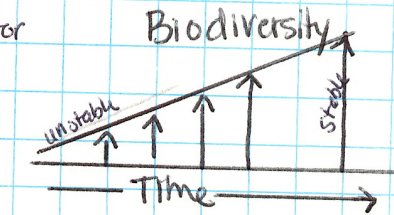
\* Not lag time



## Ecological Succession



1° succession - from rock  
2° succession - once alive



## Human Impact

- Urbanization
- Pollution (Air, water, pesticides, disposal)
- Biological Magnification
- Invasive species
- Deforestation
- Global (Acid Rain, Global warming, Greenhouse, Ozone depletion)

## Improvements

- Pollution control - EPA
- Conservation
- Species preservation
- Biological control
- Advocacy
- Education