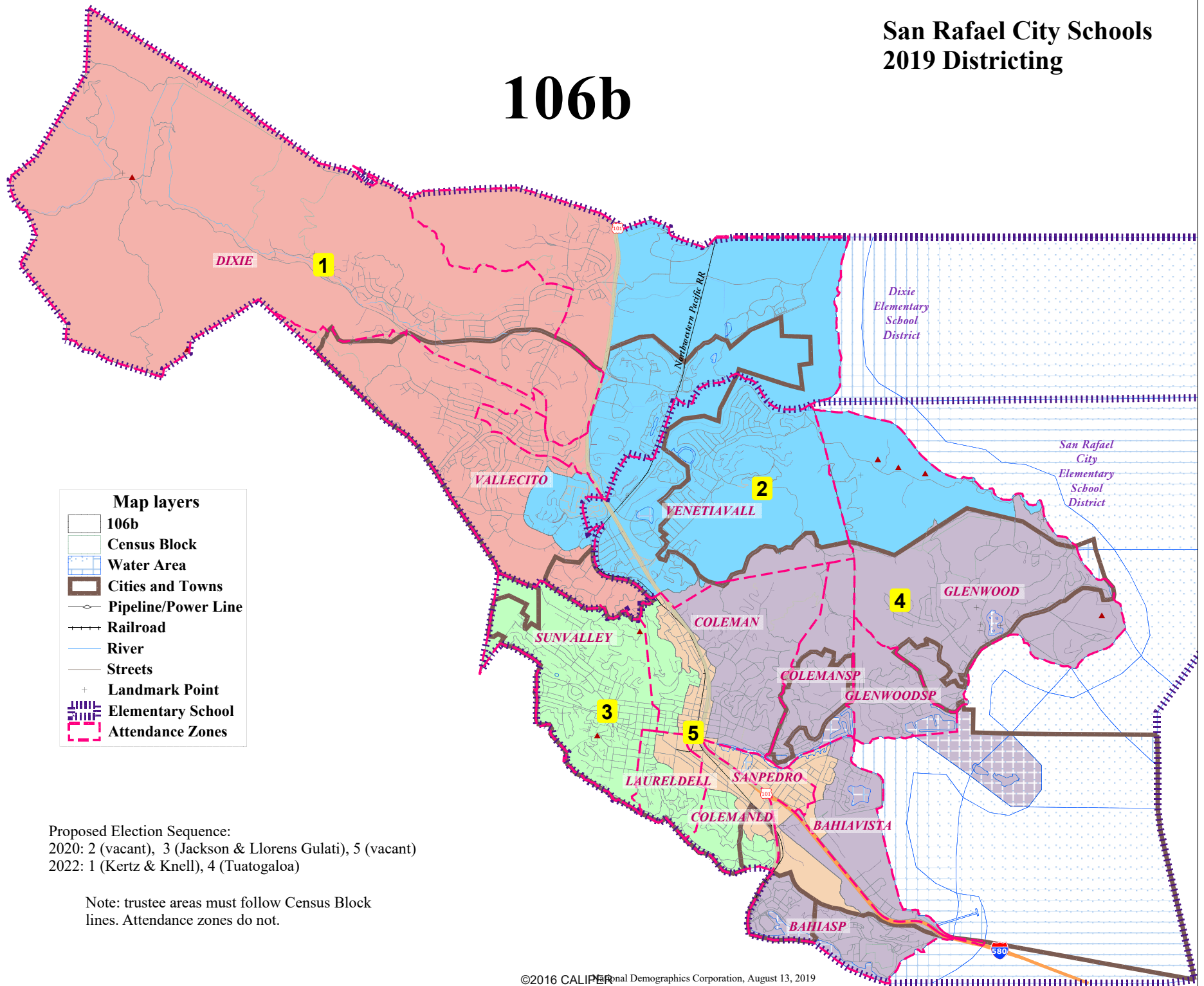


106b



Proposed Election Sequence:
2020: 2 (vacant), 3 (Jackson & Llorens Gulati), 5 (vacant)
2022: 1 (Kertz & Knell), 4 (Tuatogaloa)

Note: trustee areas must follow Census Block lines. Attendance zones do not.

San Rafael Unified - Map 106b

District		1	2	3	4	5	Total
Ideal	Total Pop	14,950	14,094	14,604	13,831	13,820	71,299
14,260	Deviation from ideal	690	-166	344	-429	-440	1,130
	% Deviation	4.84%	-1.16%	2.41%	-3.01%	-3.09%	7.92%
Total Pop	% Hisp	7%	20%	18%	13%	76%	27%
	% NH White	81%	64%	72%	75%	16%	62%
	% NH Black	2%	3%	2%	2%	2%	2%
	% Asian-American	9%	10%	6%	8%	5%	7%
Citizen Voting Age Pop	Total	11,699	11,102	10,900	10,118	4,380	48,200
	% Hisp	5%	7%	9%	6%	37%	10%
	% NH White	84%	76%	81%	82%	45%	78%
	% NH Black	1%	4%	4%	4%	5%	3%
	% Asian/Pac.Isl.	9%	11%	4%	7%	13%	8%
Voter Registration (Nov 2016)	Total	11,034	7,957	9,379	9,196	2,782	40,348
	% Latino est.	5%	11%	7%	7%	22%	8%
	% Spanish-Surnamed	4%	9%	7%	6%	20%	7%
	% Asian-Surnamed	4%	4%	3%	4%	6%	4%
	% Filipino-Surnamed	1%	1%	1%	0%	1%	1%
	% NH White est.	89%	79%	86%	85%	62%	83%
	% NH Black	1%	3%	3%	3%	4%	3%
Voter Turnout (Nov 2016)	Total	9,910	6,910	8,199	8,107	2,240	35,366
	% Latino est.	5%	10%	7%	6%	20%	8%
	% Spanish-Surnamed	4%	9%	6%	6%	18%	7%
	% Asian-Surnamed	4%	4%	3%	3%	5%	4%
	% Filipino-Surnamed	1%	1%	1%	0%	1%	1%
	% NH White est.	89%	80%	86%	86%	64%	84%
	% NH Black	1%	3%	3%	3%	4%	3%
Voter Turnout (Nov 2014)	Total	6,790	4,071	4,995	5,167	1,089	22,113
	% Latino est.	4%	7%	4%	4%	14%	5%
	% Spanish-Surnamed	3%	6%	4%	3%	13%	4%
	% Asian-Surnamed	4%	3%	3%	2%	6%	3%
	% Filipino-Surnamed	1%	1%	0%	0%	0%	0%
	% NH White est.	90%	86%	91%	92%	71%	89%
	% NH Black est.	1%	3%	2%	2%	6%	2%
ACS Pop. Est.	Total	15,884	15,413	15,544	13,870	13,946	74,658
Age	age0-19	22%	18%	20%	24%	31%	23%
	age20-60	47%	54%	58%	44%	58%	52%
	age60plus	31%	28%	22%	32%	11%	25%
Immigration	immigrants	16%	25%	18%	21%	50%	26%
	naturalized	67%	44%	32%	49%	19%	37%
Language spoken at home	english	81%	66%	75%	77%	29%	67%
	spanish	7%	17%	19%	13%	64%	23%
	asian-lang	4%	6%	2%	3%	5%	4%
	other lang	8%	10%	4%	7%	2%	7%
Language Fluency	Speaks Eng. "Less than Very Well"	6%	14%	11%	11%	46%	17%
Education (among those age 25+)	hs-grad	36%	45%	41%	31%	37%	38%
	bachelor	33%	29%	30%	33%	14%	28%
	graduatedegree	26%	18%	22%	25%	10%	21%
Child in Household	child-under18	30%	24%	25%	25%	44%	29%
Pct of Pop. Age 16+	employed	58%	62%	67%	58%	70%	63%
Household Income	income 0-25k	11%	14%	17%	13%	24%	15%
	income 25-50k	12%	20%	18%	12%	26%	17%
	income 50-75k	12%	16%	11%	8%	14%	12%
	income 75-200k	42%	36%	40%	39%	28%	38%
	income 200k-plus	24%	15%	14%	27%	8%	18%
Housing Stats	single family	86%	54%	57%	79%	34%	64%
	multi-family	14%	46%	43%	21%	66%	36%
	rented	20%	43%	54%	30%	72%	42%
	owned	80%	57%	46%	70%	28%	58%

Total population data from the 2010 Decennial Census.

Surname-based Voter Registration and Turnout data from the California Statewide Database.

Latino voter registration and turnout data are Spanish-surname counts adjusted using Census Population Department undercount estimates. NH White and NH Black registration and turnout counts estimated by NDC. Citizen Voting Age Pop., Age, Immigration, and other demographics from the 2012-2016 American Community Survey and Special Tabulation 5-year data.