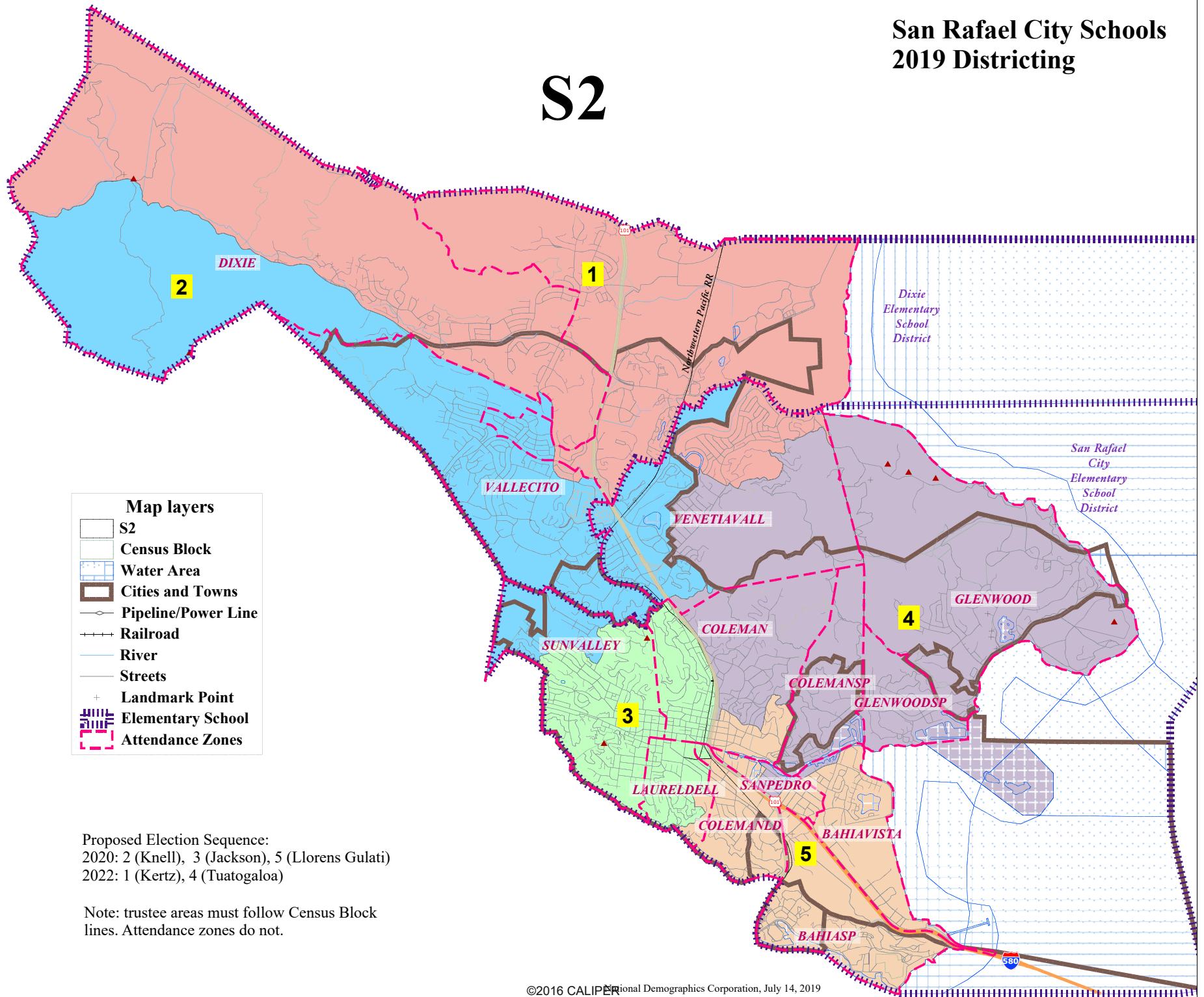


San Rafael City Schools 2019 Districting

S2



San Rafael Unified - Map S2

District		1	2	3	4	5	Total
Ideal	Total Pop	14,460	14,034	14,137	14,356	14,312	71,299
14,260	Deviation from ideal	200	-226	-123	96	52	426
	% Deviation	1.40%	-1.58%	-0.86%	0.67%	0.36%	2.99%
Total Pop	% Hisp	12%	15%	22%	26%	58%	27%
	% NH White	74%	72%	67%	65%	32%	62%
	% NH Black	2%	2%	3%	2%	2%	2%
	% Asian-American	9%	9%	6%	6%	7%	7%
Citizen Voting Age Pop	Total	11,781	10,577	10,327	9,681	5,834	48,200
	% Hisp	6%	6%	11%	8%	24%	10%
	% NH White	79%	82%	79%	81%	60%	78%
	% NH Black	2%	2%	5%	4%	4%	3%
	% Asian/Pac.Isl.	12%	8%	5%	6%	12%	8%
Voter Registration (Nov 2016)	Total	9,690	9,054	8,674	8,392	4,538	40,348
	% Latino est.	7%	7%	8%	6%	17%	8%
	% Spanish-Surnamed	6%	6%	7%	6%	15%	7%
	% Asian-Surnamed	4%	4%	3%	3%	7%	4%
	% Filipino-Surnamed	1%	1%	1%	0%	1%	1%
	% NH White est.	85%	86%	83%	87%	70%	83%
	% NH Black	2%	2%	4%	3%	4%	3%
Voter Turnout (Nov 2016)	Total	8,615	7,995	7,485	7,506	3,765	35,366
	% Latino est.	7%	7%	7%	6%	15%	8%
	% Spanish-Surnamed	6%	6%	7%	5%	14%	7%
	% Asian-Surnamed	4%	4%	3%	3%	6%	4%
	% Filipino-Surnamed	1%	1%	1%	0%	1%	1%
	% NH White est.	85%	86%	84%	88%	73%	84%
	% NH Black	2%	2%	4%	3%	4%	3%
Voter Turnout (Nov 2014)	Total	5,524	5,254	4,389	4,994	1,953	22,113
	% Latino est.	4%	5%	5%	4%	10%	5%
	% Spanish-Surnamed	4%	5%	4%	3%	9%	4%
	% Asian-Surnamed	4%	3%	3%	2%	5%	3%
	% Filipino-Surnamed	0%	1%	0%	0%	0%	0%
	% NH White est.	89%	89%	90%	92%	82%	89%
	% NH Black est.	2%	2%	2%	2%	3%	2%
ACS Pop. Est.	Total	15,870	14,565	14,759	14,385	15,079	74,658
Age	age0-19	19%	21%	19%	25%	30%	23%
	age20-60	51%	49%	59%	47%	55%	52%
	age60plus	30%	31%	21%	28%	15%	25%
Immigration	immigrants	18%	21%	18%	26%	44%	26%
	naturalized	57%	55%	30%	39%	22%	37%
Language spoken at home	english	77%	74%	75%	69%	37%	67%
	spanish	10%	11%	19%	22%	54%	23%
	asian-lang	4%	7%	2%	2%	6%	4%
	other lang	9%	8%	5%	7%	3%	7%
Language Fluency	Speaks Eng. "Less than Very Well"	9%	10%	11%	17%	39%	17%
Education (among those age 25+)	hs-grad	41%	38%	41%	33%	37%	38%
	bachelor	32%	30%	30%	31%	17%	28%
	graduatedegree	22%	25%	22%	22%	12%	21%
Child in Household	child-under18	26%	27%	24%	30%	38%	29%
Pct of Pop. Age 16+	employed	61%	58%	67%	60%	67%	63%
Household Income	income 0-25k	11%	14%	17%	13%	21%	15%
	income 25-50k	17%	14%	19%	16%	21%	17%
	income 50-75k	15%	13%	11%	9%	13%	12%
	income 75-200k	40%	37%	39%	37%	33%	38%
	income 200k-plus	17%	23%	15%	25%	12%	18%
Housing Stats	single family	70%	68%	53%	76%	51%	64%
	multi-family	30%	32%	47%	24%	49%	36%
	rented	31%	33%	57%	32%	58%	42%
	owned	69%	67%	43%	68%	42%	58%

Total population data from the 2010 Decennial Census.

Surname-based Voter Registration and Turnout data from the California Statewide Database.

Latino voter registration and turnout data are Spanish-surname counts adjusted using Census Population Department undercount estimates. NH White and NH Black registration and turnout counts estimated by NDC. Citizen Voting Age Pop., Age, Immigration, and other demographics from the 2012-2016 American Community Survey and Special Tabulation 5-year data.