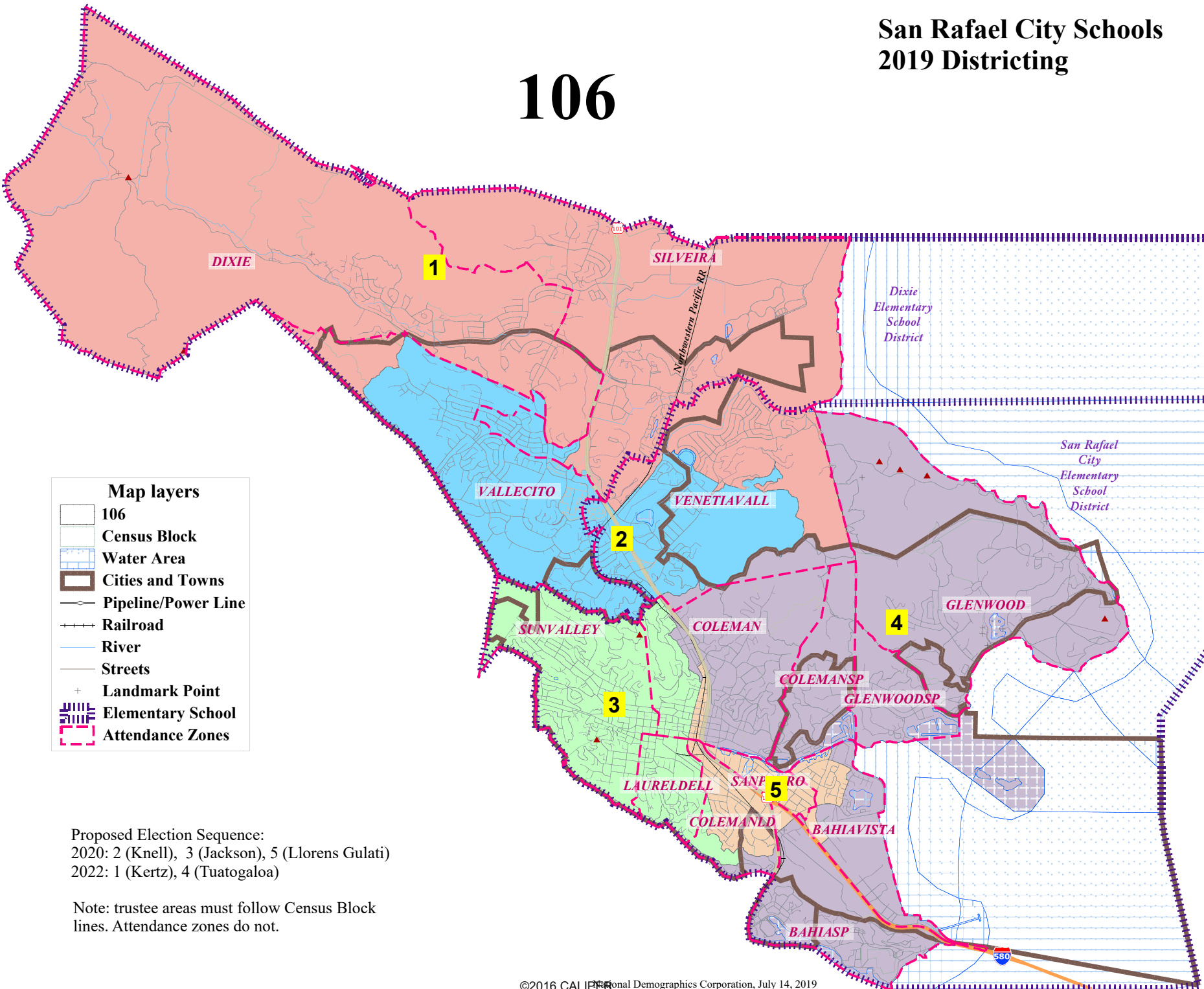


San Rafael City Schools 2019 Districting

106



Map layers

- 106
- Census Block
- Water Area
- Cities and Towns
- Pipeline/Power Line
- Railroad
- River
- Streets
- Landmark Point
- Elementary School District
- Attendance Zones

Proposed Election Sequence:
 2020: 2 (Knell), 3 (Jackson), 5 (Llorens Gulati)
 2022: 1 (Kertz), 4 (Tuatogaloa)

Note: trustee areas must follow Census Block lines. Attendance zones do not.

San Rafael Unified - Map 106

District		1	2	3	4	5	Total
Ideal	Total Pop	14,637	14,404	14,359	14,014	13,885	71,299
14,260	Deviation from ideal	377	144	99	-246	-375	752
	% Deviation	2.64%	1.01%	0.69%	-1.73%	-2.63%	5.27%
Total Pop	% Hisp	12%	15%	16%	13%	78%	27%
	% NH White	74%	72%	73%	76%	14%	62%
	% NH Black	2%	2%	3%	2%	2%	2%
	% Asian-American	9%	9%	6%	7%	5%	7%
Citizen Voting Age Pop	Total	11,905	10,894	10,903	10,444	4,054	48,200
	% Hisp	6%	7%	8%	6%	43%	10%
	% NH White	79%	81%	82%	83%	39%	78%
	% NH Black	2%	2%	5%	4%	3%	3%
	% Asian/Pac.Isl.	11%	8%	5%	6%	14%	8%
Voter Registration (Nov 2016)	Total	9,893	9,093	9,259	9,402	2,701	40,348
	% Latino est.	7%	7%	8%	6%	24%	8%
	% Spanish-Surnamed	6%	7%	7%	6%	21%	7%
	% Asian-Surnamed	4%	4%	3%	3%	7%	4%
	% Filipino-Surnamed	1%	1%	1%	0%	1%	1%
	% NH White est.	85%	85%	85%	85%	60%	83%
	% NH Black	2%	2%	3%	3%	4%	3%
Voter Turnout (Nov 2016)	Total	8,787	8,028	8,067	8,311	2,173	35,366
	% Latino est.	7%	7%	7%	6%	22%	8%
	% Spanish-Surnamed	6%	6%	6%	5%	20%	7%
	% Asian-Surnamed	4%	4%	3%	3%	6%	4%
	% Filipino-Surnamed	1%	1%	1%	0%	1%	1%
	% NH White est.	85%	86%	86%	86%	63%	84%
	% NH Black	2%	2%	3%	3%	4%	3%
Voter Turnout (Nov 2014)	Total	5,551	5,307	4,902	5,302	1,050	22,113
	% Latino est.	4%	5%	4%	3%	16%	5%
	% Spanish-Surnamed	4%	5%	4%	3%	15%	4%
	% Asian-Surnamed	4%	3%	3%	2%	8%	3%
	% Filipino-Surnamed	0%	1%	0%	0%	0%	0%
	% NH White est.	89%	89%	91%	92%	68%	89%
	% NH Black est.	2%	2%	2%	2%	6%	2%
ACS Pop. Est.	Total	16,067	15,227	15,069	14,029	14,267	74,658
Age	age0-19	19%	20%	20%	23%	32%	23%
	age20-60	51%	50%	58%	45%	58%	52%
	age60plus	30%	30%	22%	32%	10%	25%
Immigration	immigrants	19%	23%	17%	19%	52%	26%
	naturalized	56%	52%	32%	53%	19%	37%
Language spoken at home	english	77%	71%	76%	80%	25%	67%
	spanish	10%	13%	17%	10%	68%	23%
	asian-lang	4%	7%	2%	2%	5%	4%
	other lang	9%	9%	5%	7%	2%	7%
Language Fluency	Speaks Eng. "Less than Very Well"	9%	11%	10%	9%	49%	17%
Education (among those age 25+)	hs-grad	41%	40%	40%	31%	37%	38%
	bachelor	32%	29%	30%	34%	12%	28%
	graduatedegree	21%	23%	23%	26%	8%	21%
Child in Household	child-under18	26%	28%	25%	25%	47%	29%
Pct of Pop. Age 16+	employed	61%	59%	67%	58%	70%	63%
Household Income	income 0-25k	11%	14%	16%	13%	24%	15%
	income 25-50k	17%	15%	18%	12%	27%	17%
	income 50-75k	16%	12%	11%	8%	15%	12%
	income 75-200k	40%	37%	40%	39%	28%	38%
	income 200k-plus	16%	22%	14%	28%	6%	18%
Housing Stats	single family	70%	70%	55%	79%	34%	64%
	multi-family	30%	30%	45%	21%	66%	36%
	rented	32%	32%	55%	30%	72%	42%
	owned	68%	68%	45%	70%	28%	58%

Total population data from the 2010 Decennial Census.

Surname-based Voter Registration and Turnout data from the California Statewide Database.

Latino voter registration and turnout data are Spanish-surname counts adjusted using Census Population Department undercount estimates. NH White and NH Black registration and turnout counts estimated by NDC. Citizen Voting Age Pop., Age, Immigration, and other demographics from the 2012-2016 American Community Survey and Special Tabulation 5-year data.