

*San Rafael City Schools  
Draft Maps Hearing*

Aug. 12, 2019

# Districting Process

2	Step	Description
<b>Two Initial Hearings</b> April 30 & May 13	<b>Held prior to release of draft maps.</b> <b>Education and to solicit input on the communities in the District.</b> Hearings must be within 30 days of each other	
<b>Release draft maps</b>	<b>Maps must be posted at least 7 days prior to 3<sup>rd</sup> hearing.</b>	
June 18	Community Forum to discuss mapping tools and draft maps	
<b>Hearings on Draft Maps</b> June 24, July 15	<b>Two meetings to discuss and revise the draft maps and to discuss the election sequencing.</b> Hearings must be within 45 days of each other	
July 17 & 29	Community Forum to discuss draft maps	
<b>Hearings &amp; Adoption</b> Aug 12 & August 26	<b>Map must be posted 7 days prior to adoption.</b>	
TBD	<b>County Committee Hearing</b>	
<b>2020</b>	<b>First by-district elections in three trustee areas</b>	
<b>2021</b>	<b>Map adjusted using 2020 Census data</b>	
<b>2022</b>	<b>Remaining two trustee areas hold first by-district elections</b>	

## Federal Laws

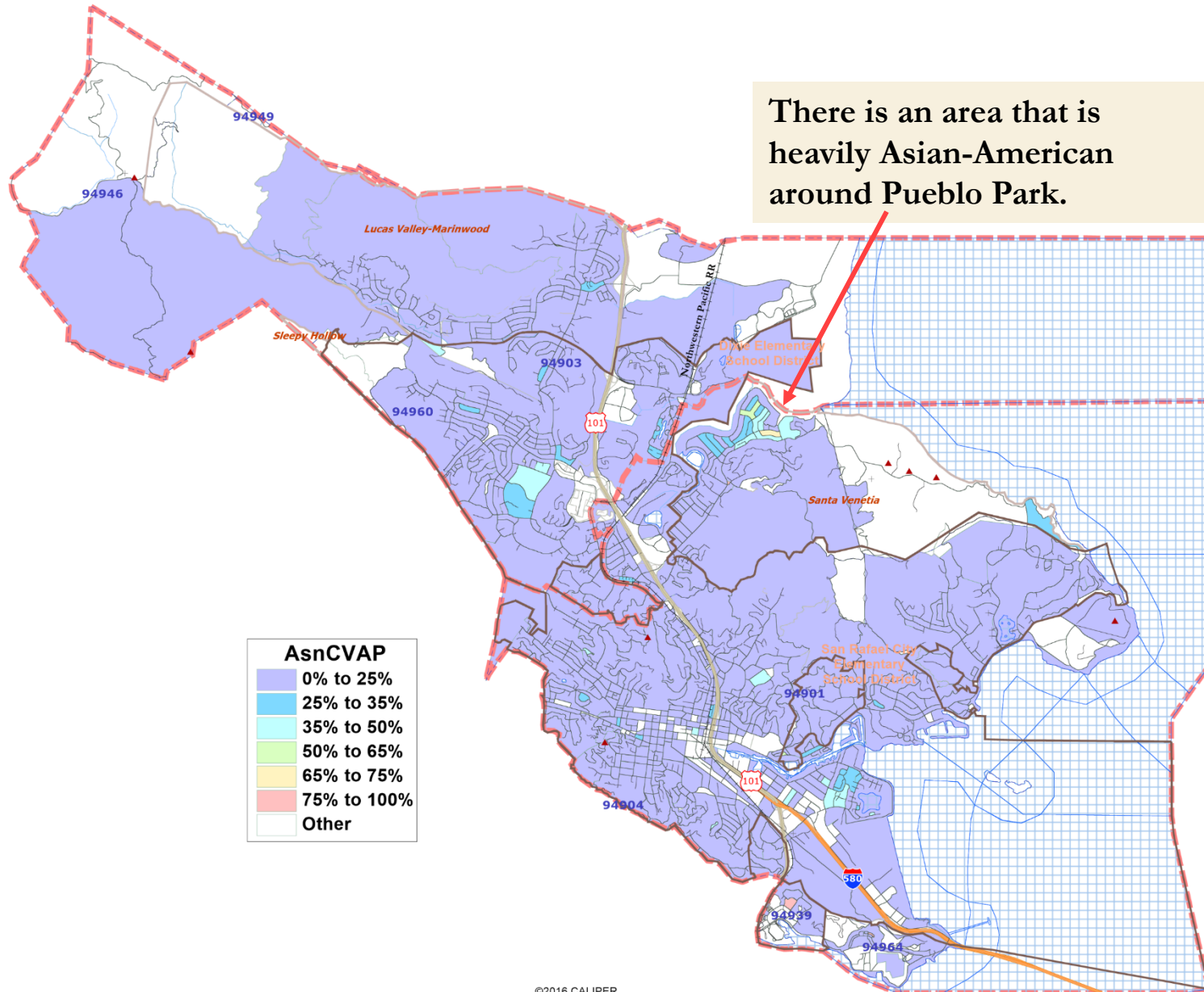
- Equal Population
- Federal Voting Rights Act
- No Racial Gerrymandering

## Traditional Redistricting Principles

- Communities of interest
- Compact
- Contiguous
- Visible (Natural & man-made) boundaries
- Respect voters' choices / continuity in office
- *Planned future growth*



# Asian-American CVAP Concentrations

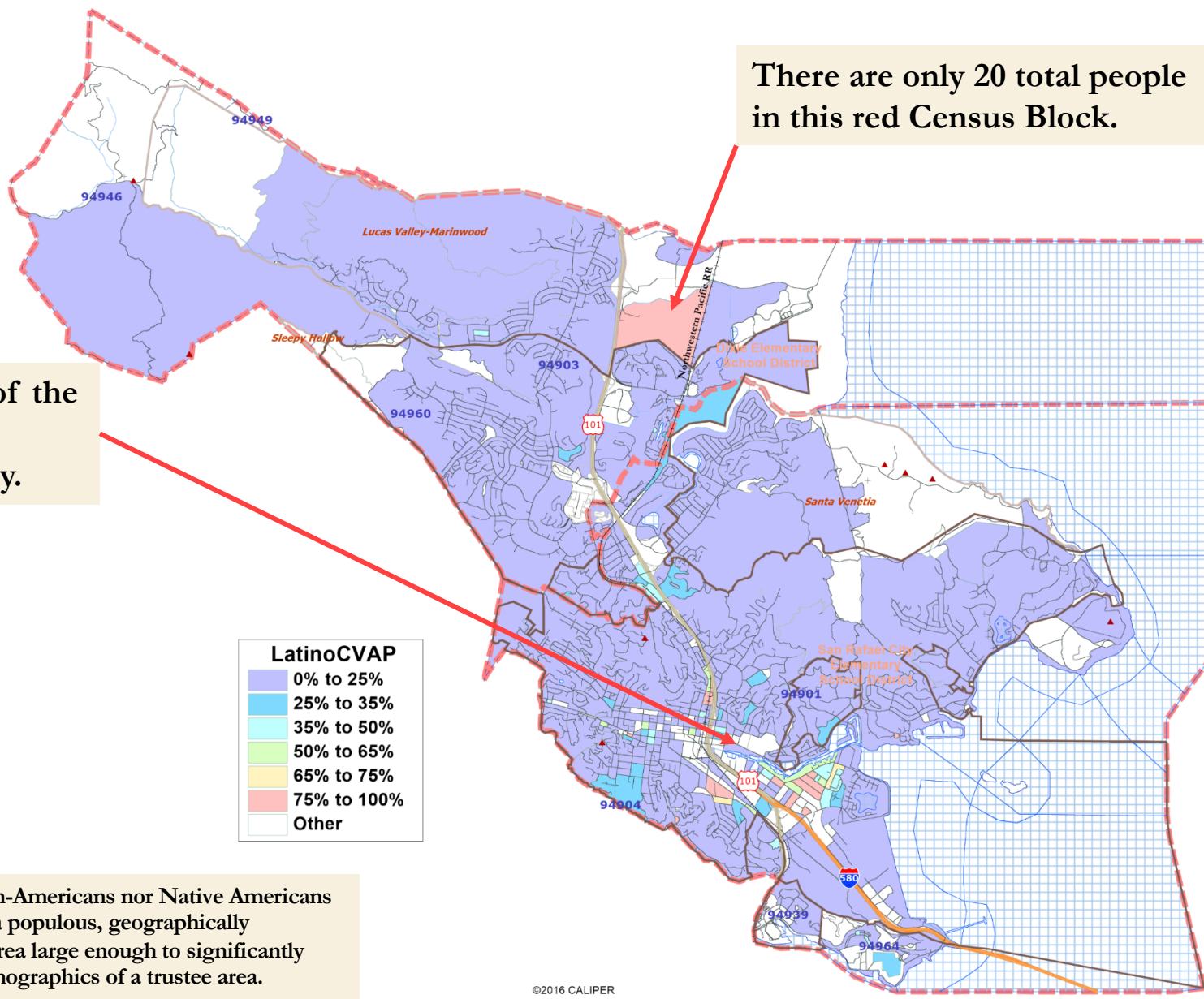




# Latino CVAP Concentrations

There are only 20 total people in this red Census Block.

Latinos are a majority of the eligible voters in the "Canal" area of the City.



LatinoCVAP	
<span style="display:inline-block; width:15px; height:15px; background-color:blue; border:1px solid black;"></span>	0% to 25%
<span style="display:inline-block; width:15px; height:15px; background-color:lightblue; border:1px solid black;"></span>	25% to 35%
<span style="display:inline-block; width:15px; height:15px; background-color:cyan; border:1px solid black;"></span>	35% to 50%
<span style="display:inline-block; width:15px; height:15px; background-color:lightgreen; border:1px solid black;"></span>	50% to 65%
<span style="display:inline-block; width:15px; height:15px; background-color:yellow; border:1px solid black;"></span>	65% to 75%
<span style="display:inline-block; width:15px; height:15px; background-color:orange; border:1px solid black;"></span>	75% to 100%
<span style="display:inline-block; width:15px; height:15px; background-color:white; border:1px solid black;"></span>	Other

Neither African-Americans nor Native Americans are present in a populous, geographically concentrated area large enough to significantly impact the demographics of a trustee area.

# Draft Maps

6

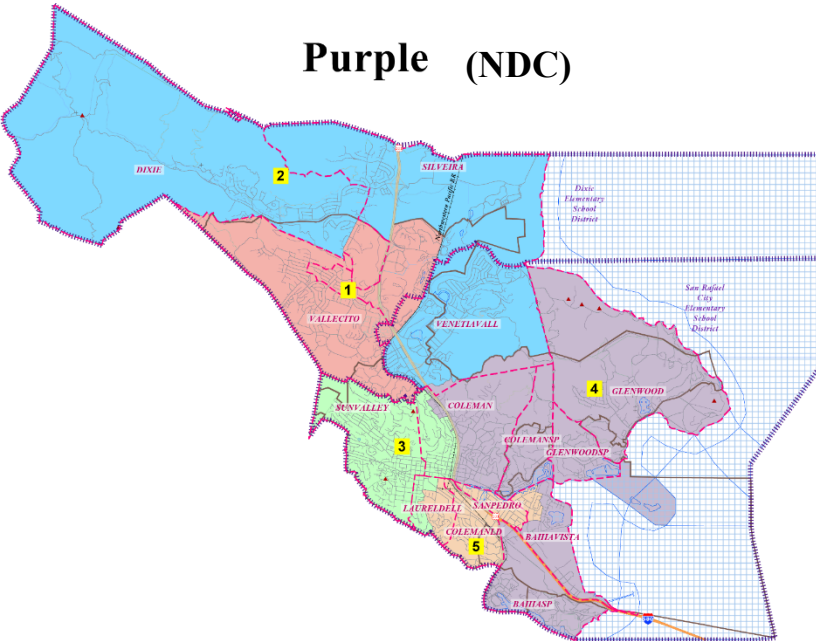
- Three NDC Draft maps (Green, Yellow, Purple)
- 6 maps drawn by residents using the online tool (101-104, 106 and 107)
- 1 map requested by a Board member at the community forum (105)
- 49 maps drawn by students using the PDF kits
  - 15 were not population balanced
  - 9 maps are presented, as they represent the central elements of the remaining 34 (S1 – S9)
- 19 Total Maps to consider

# NDC NDC Originals

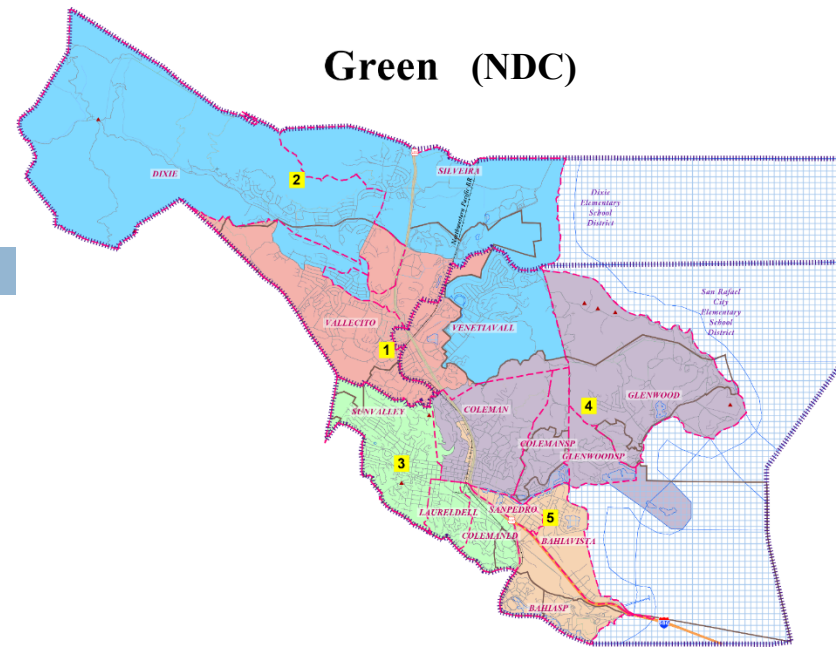
National Demographics Corporation

7

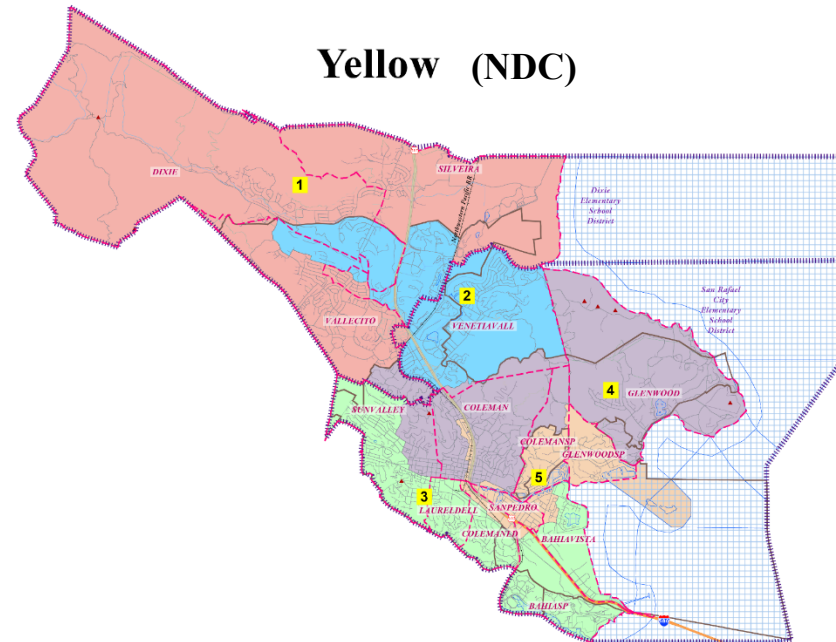
## Purple (NDC)



## Green (NDC)



## Yellow (NDC)

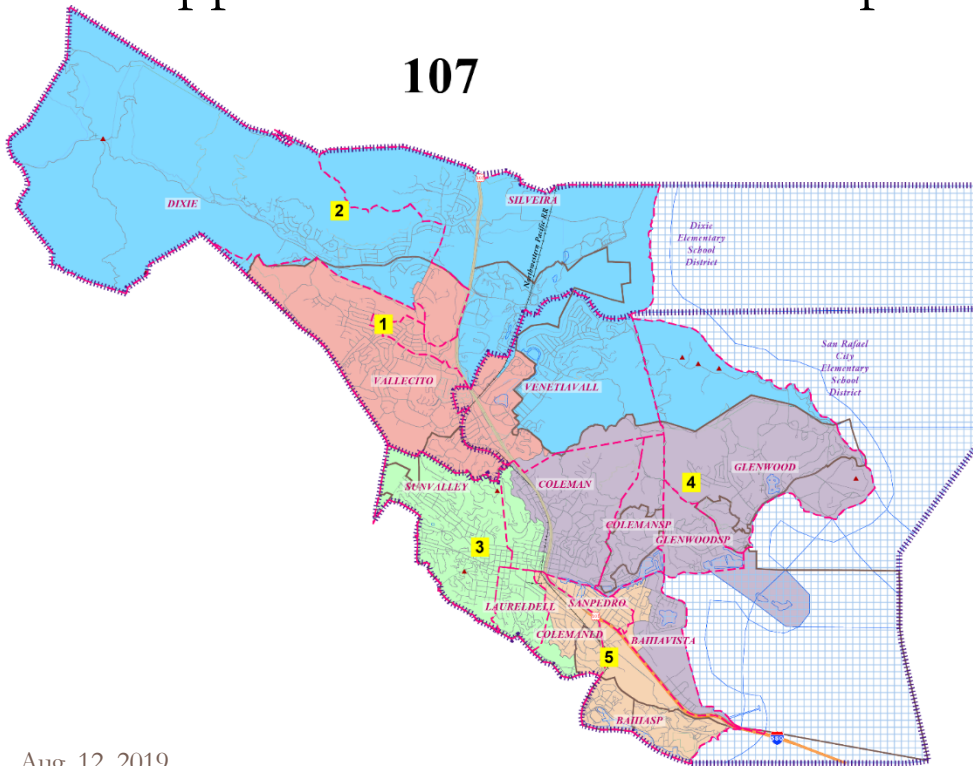


# Zachary Griggy Maps

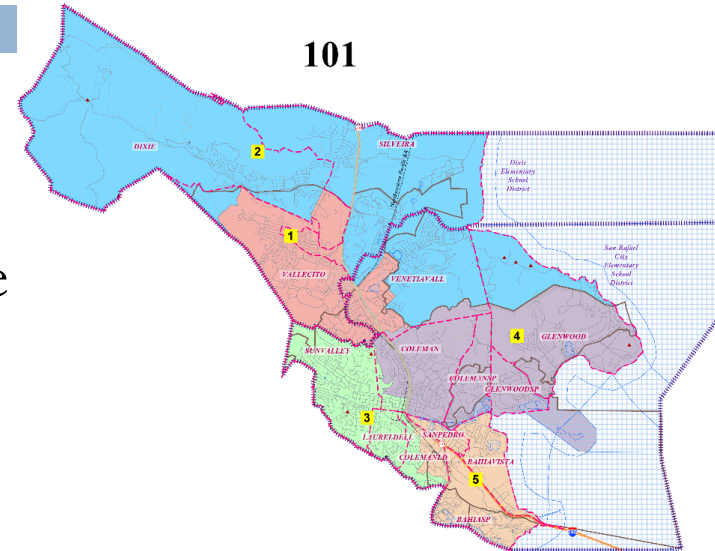
8

- Drew 101, 102, and 107
- 107 appears to be an updated version of the earlier drafts (though the top of 101 could be swapped into 107 if the Board prefers that)

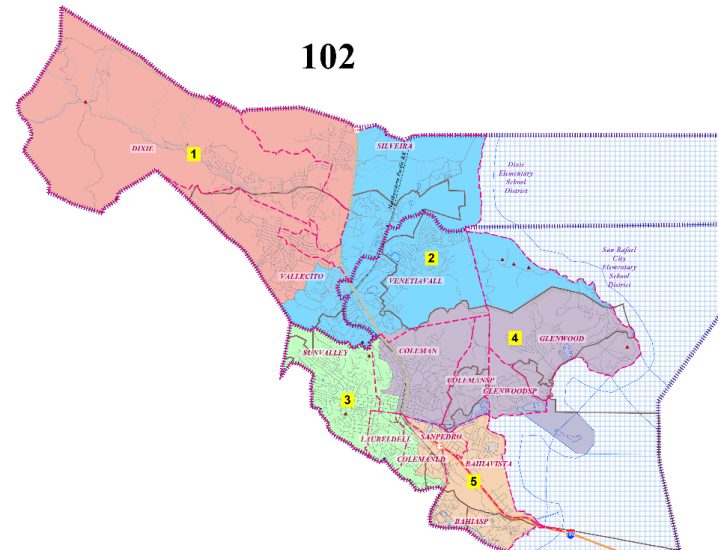
107



101



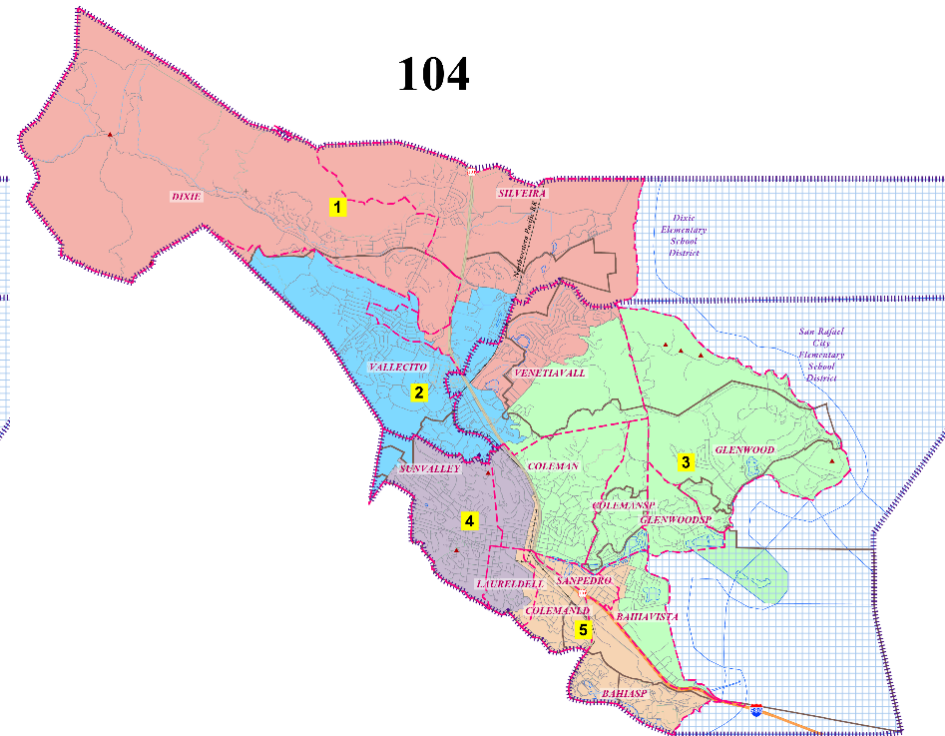
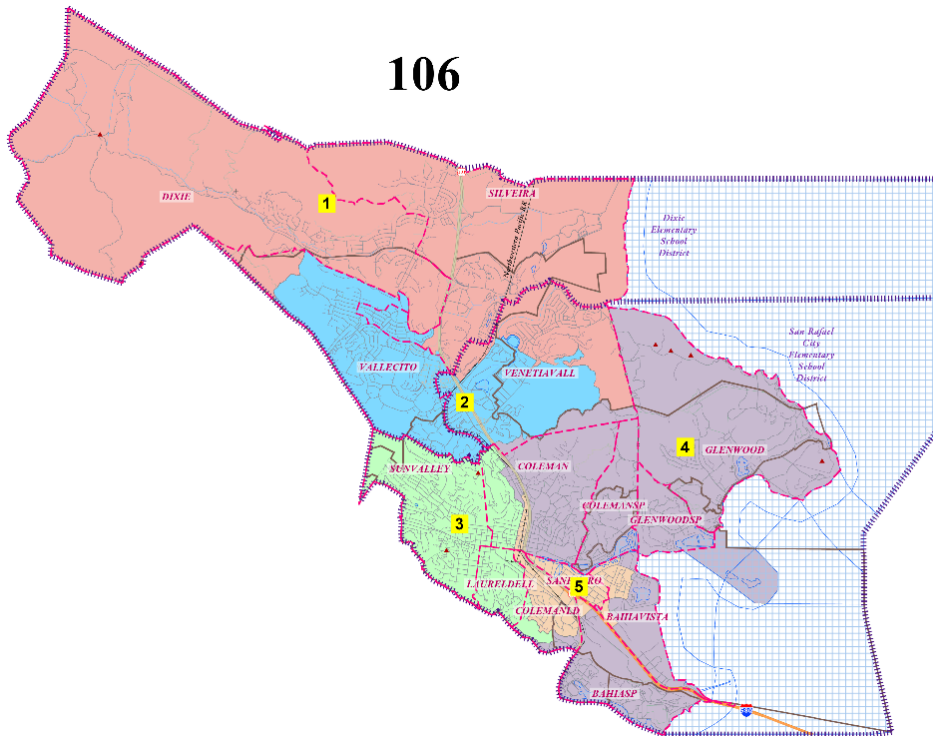
102





# Jon Marker Maps

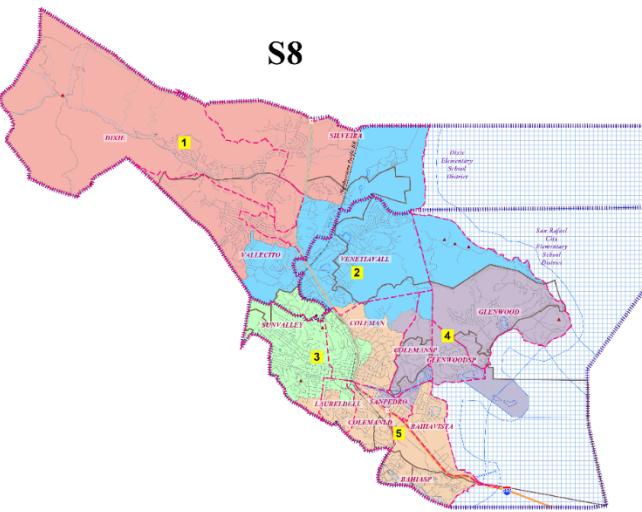
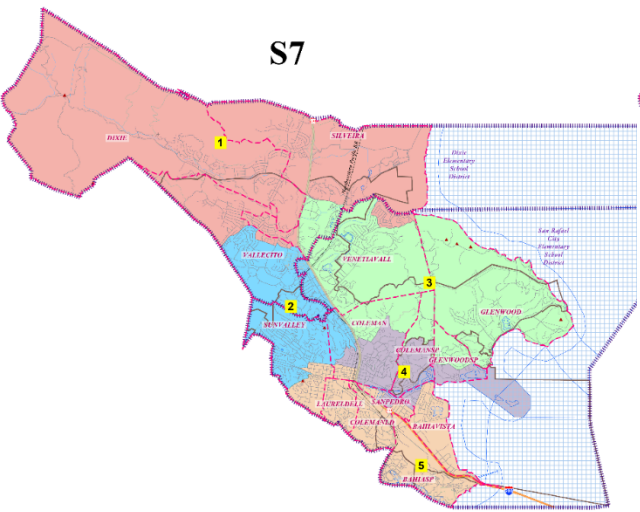
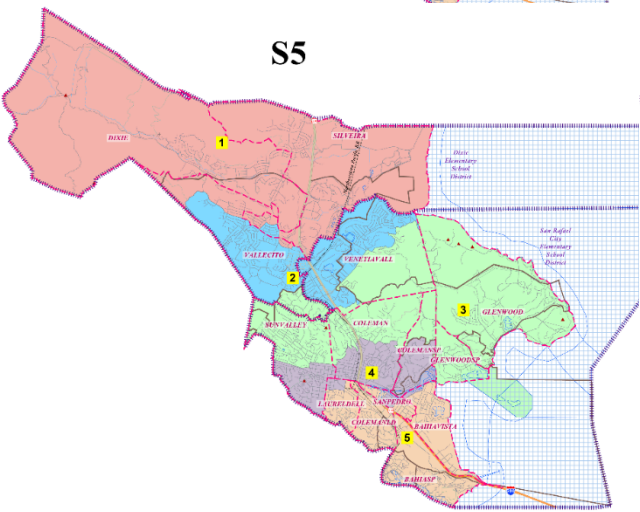
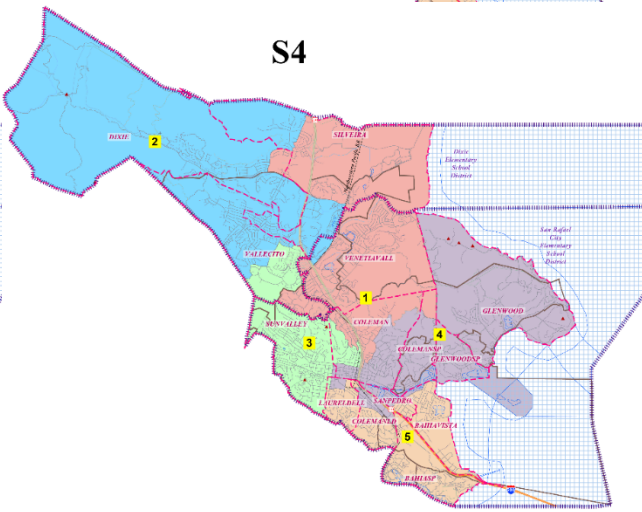
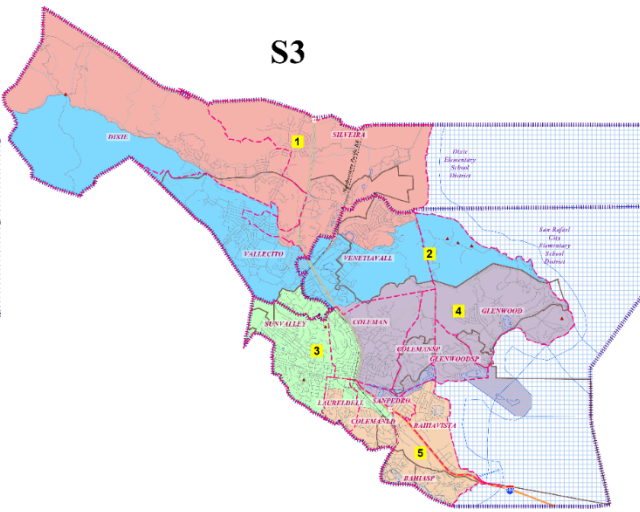
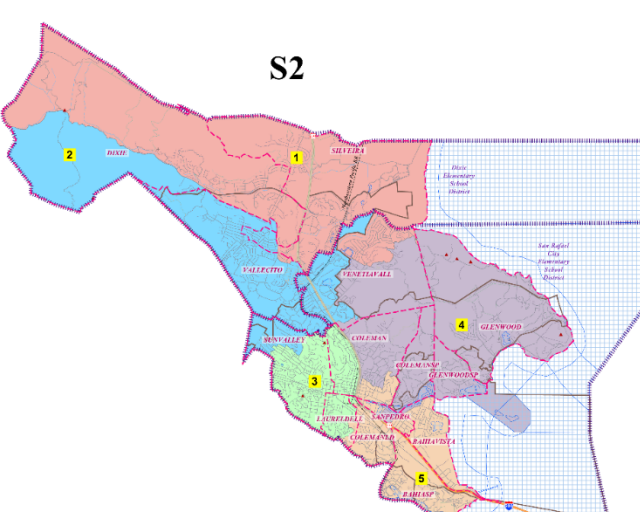
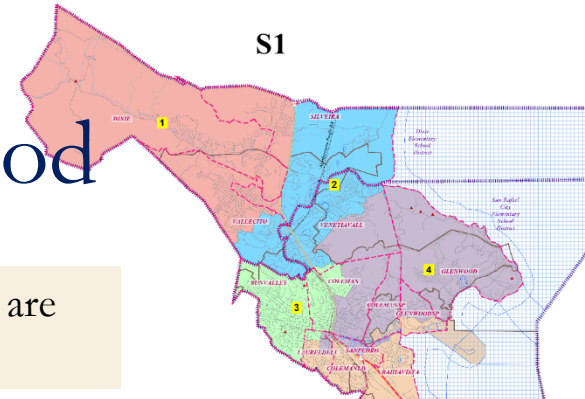
□ Drew 106 as an update to 104



# Divide Canal Neighborhood

10

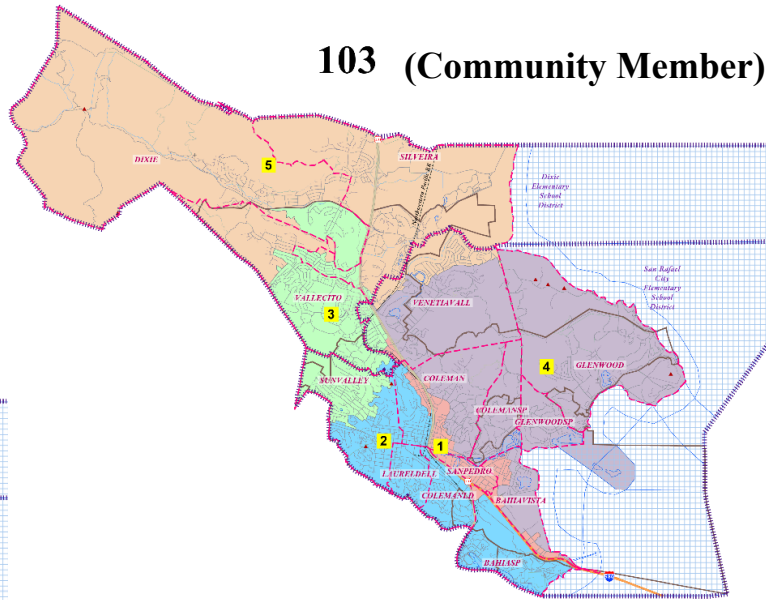
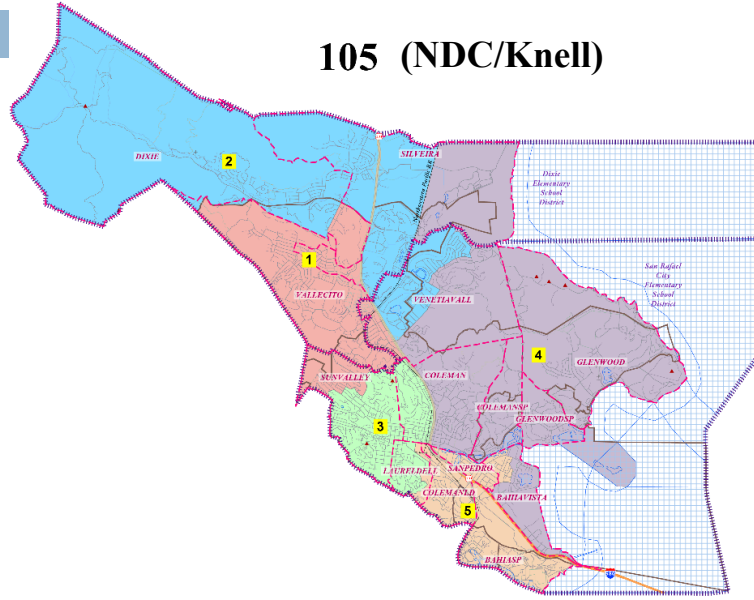
NDC recommends not dividing the Canal neighborhood, unless there are Canal residents who say they prefer to have multiple representatives.



# Other Resident Maps/Requests

103 (Community Member)

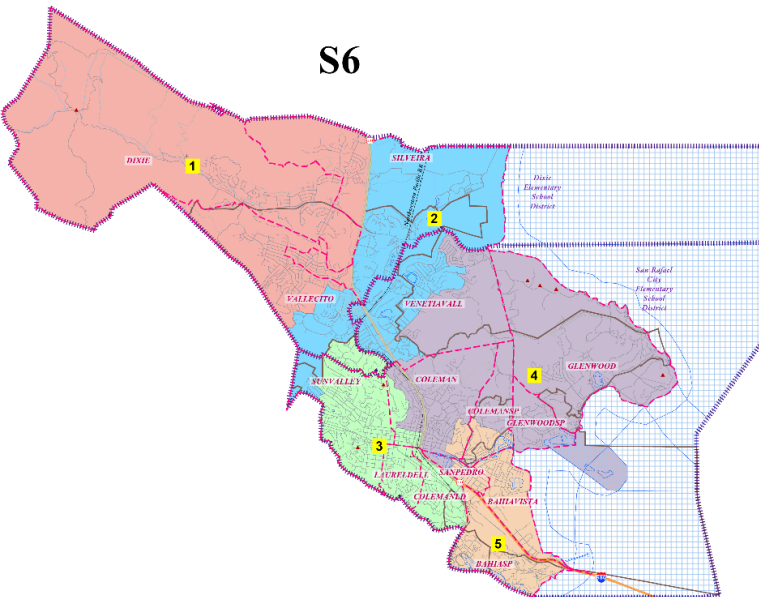
105 (NDC/Knell)



©2016 CALPER

S6

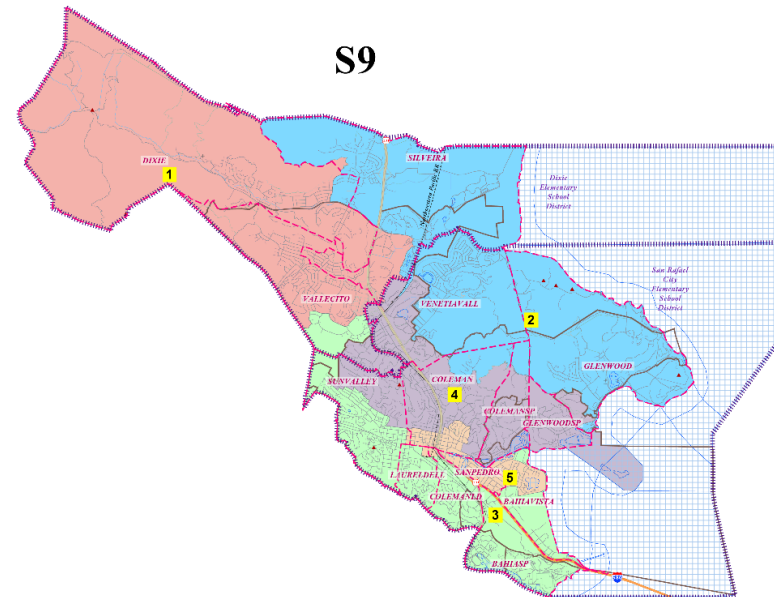
©2016 CALPER



©2016 CALPER

S9

©2016 CALPER



12

## Suggested Groupings

1. Miller Creek-Dominate Area 1  
(Spinnaker/Canal in Separate Areas)
2. Mixed Miller Creek/San Rafael Elementary  
(Spinnaker/Canal in Separate Areas)
3. Mixed Miller Creek/San Rafael Elementary  
(Spinnaker/Canal in Separate Areas; Freeway Corridor with Canal Area)
4. Canal with Spinnaker

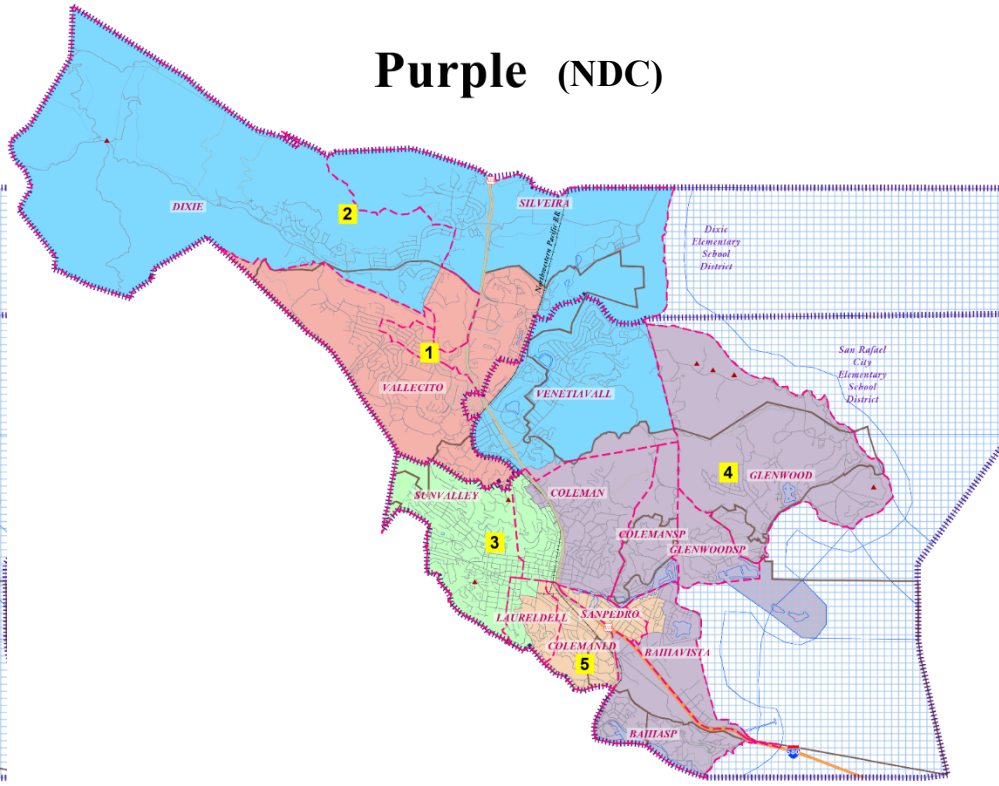
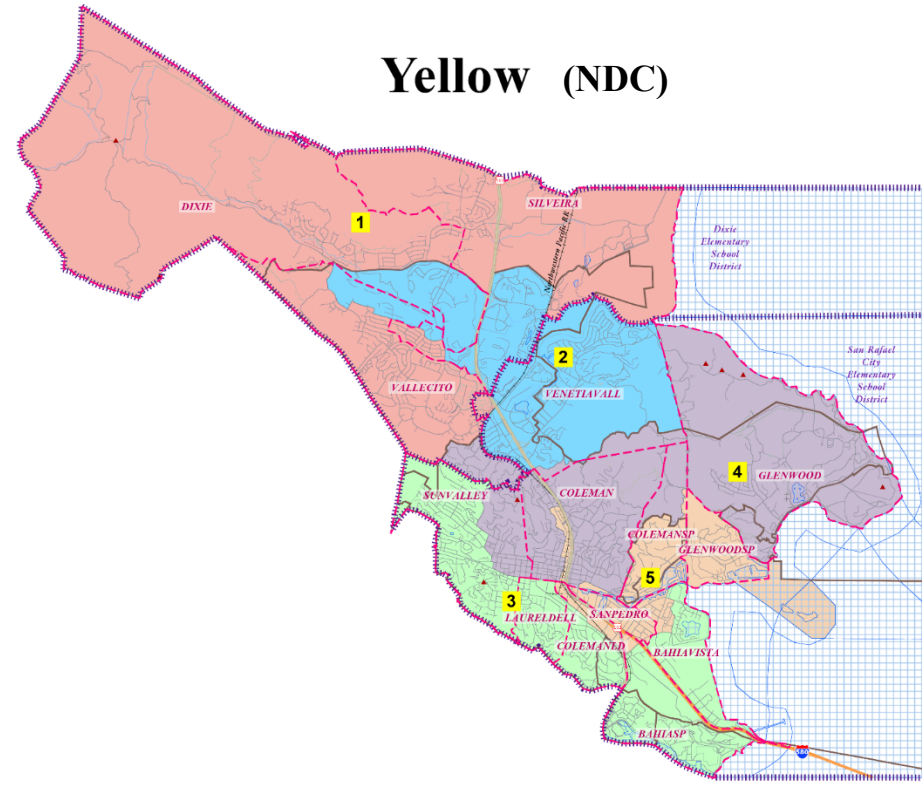
Board can identify a preferred “group,” one (or more) preferred maps from in each group, or any other combination of 2 to 3 “focus” maps



# 1. Miller Creek-Dominate Area 1 (Spinnaker/Canal in Separate Areas)

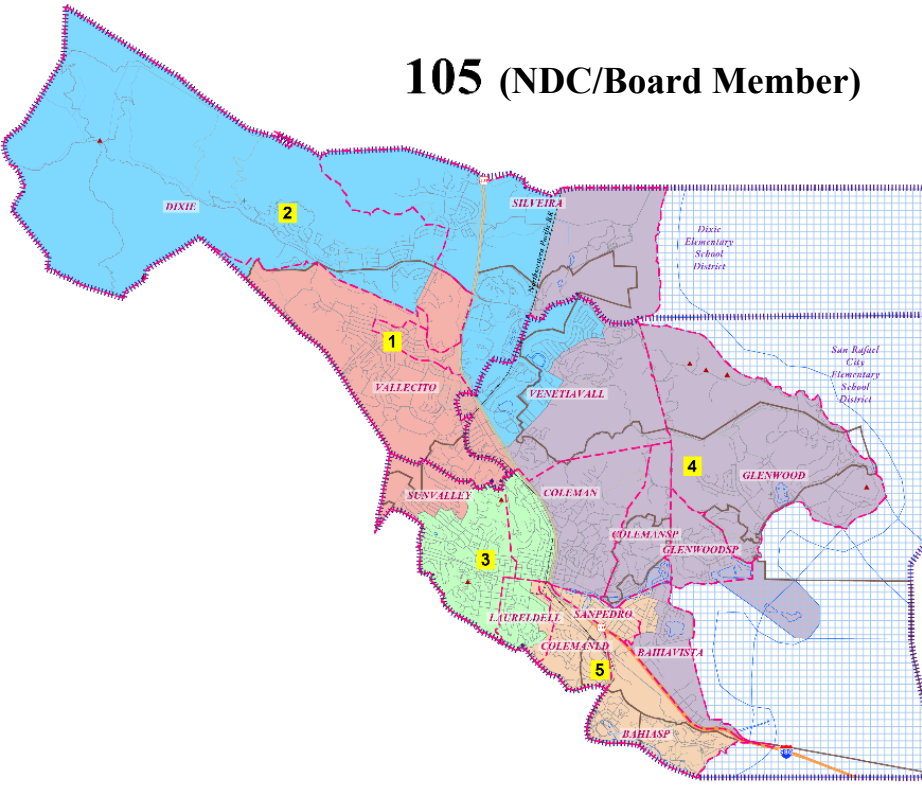
**Yellow (NDC)**

**Purple (NDC)**



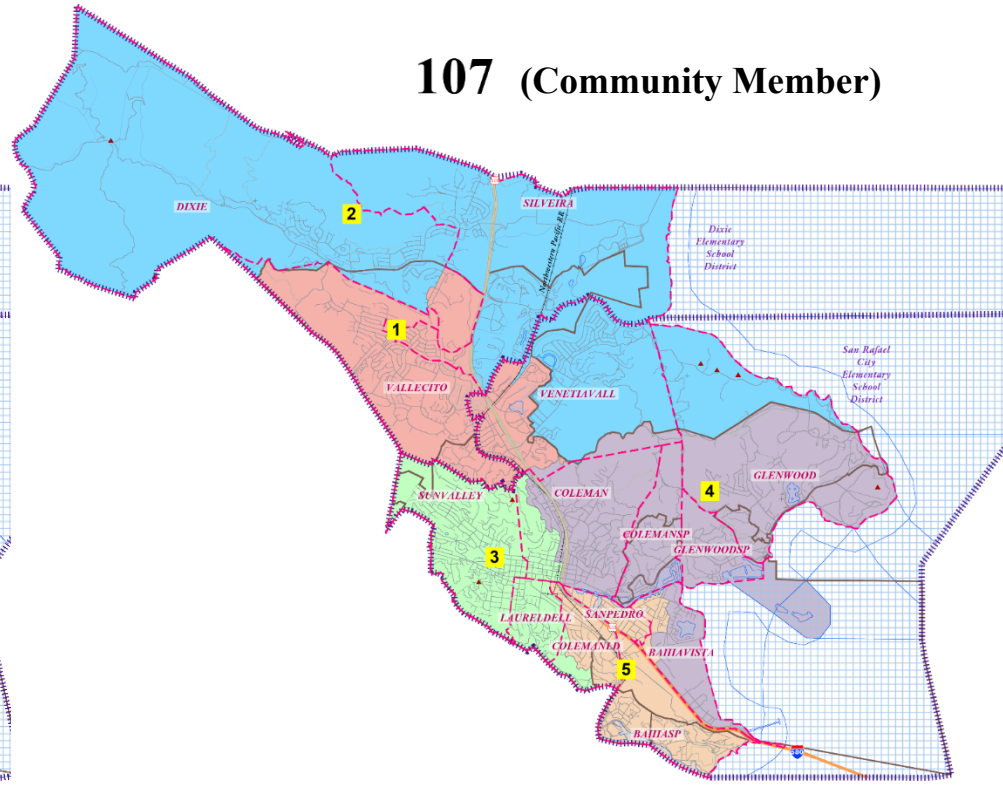
# 2. Mixed Miller Creek/San Rafael Elementary (Spinnaker/Canal in Separate Areas)

### 105 (NDC/Board Member)



©2016 CALIPER

### 107 (Community Member)

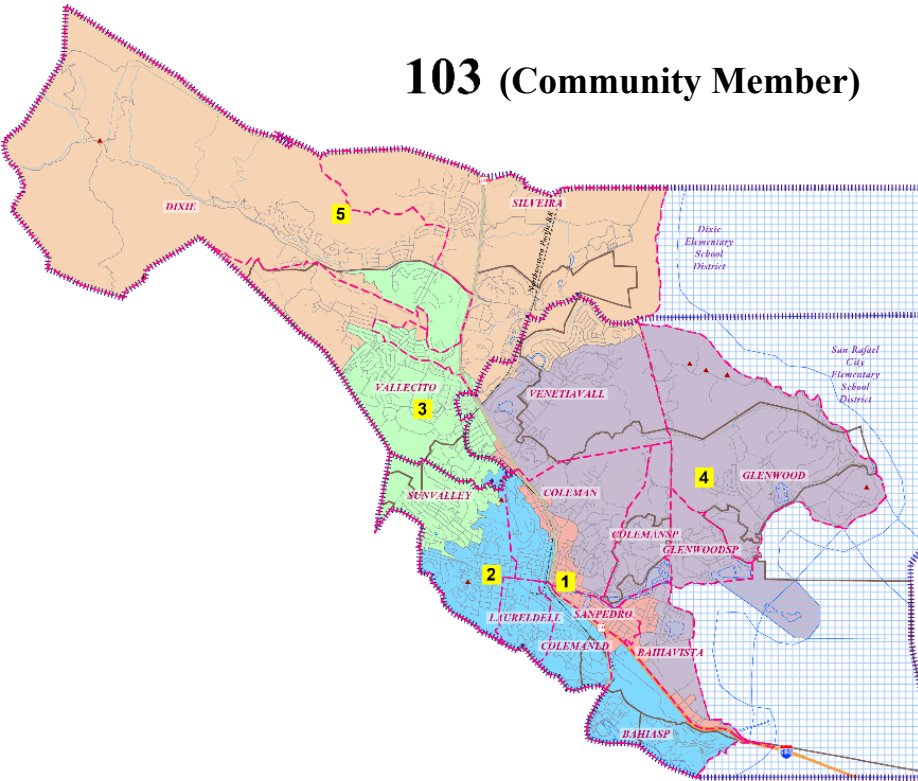


©2016 CALIPER

Areas 1 and 2 in Map 107 could be swapped out for the Areas 1 and 2 in Map 102.

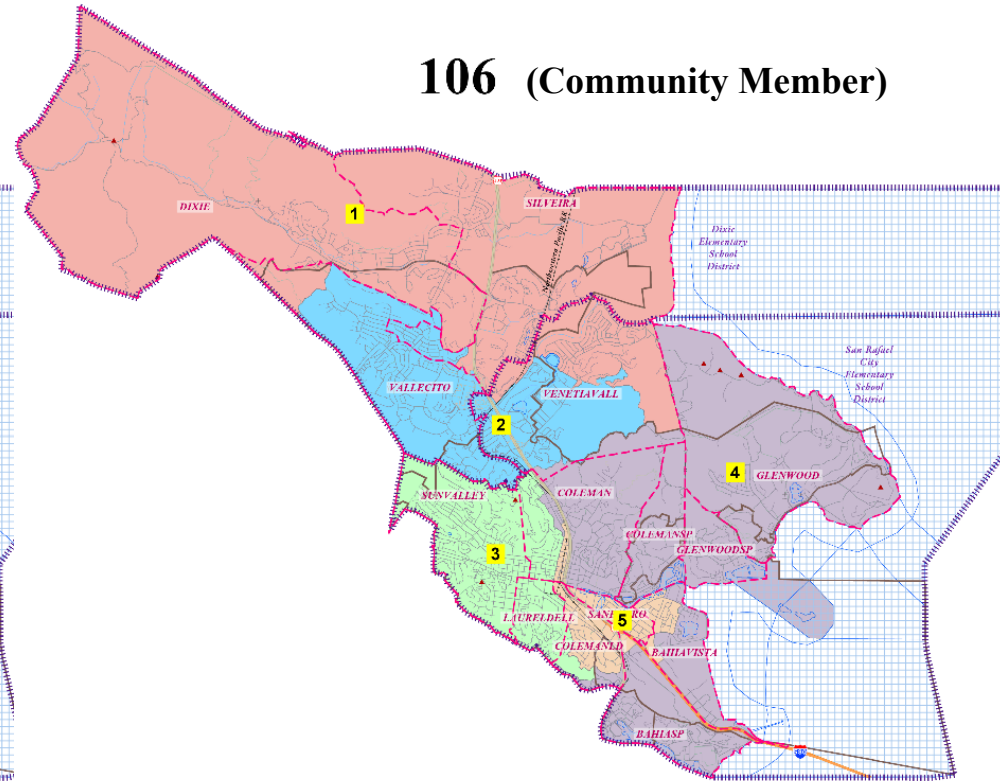
# 3. Mixed Miller Creek/San Rafael Elementary (Spinnaker/Canal Separate; Freeway Corridor)

### 103 (Community Member)



©2018 CALIPER

### 106 (Community Member)



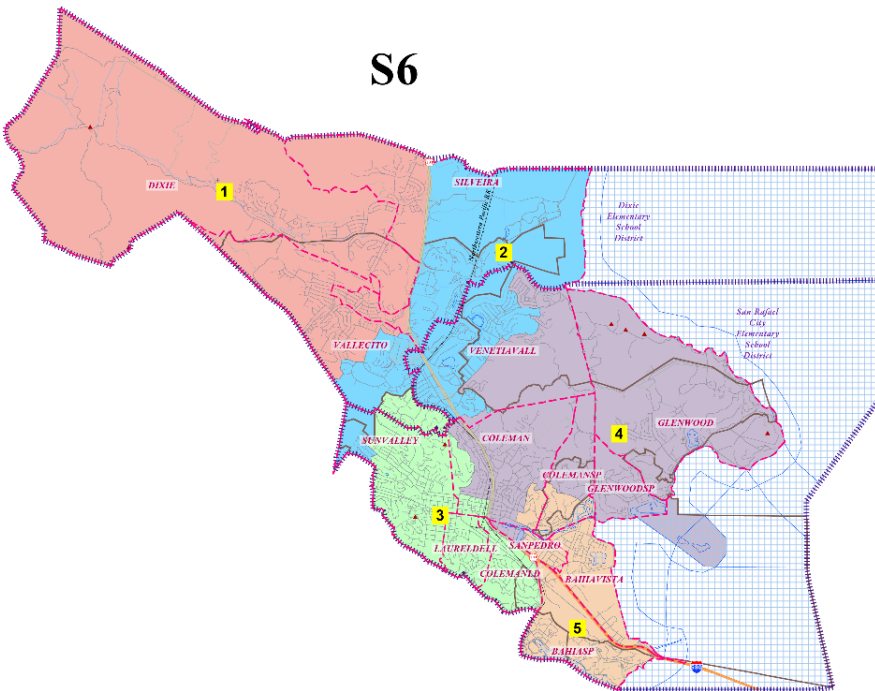
©2018 CALIPER



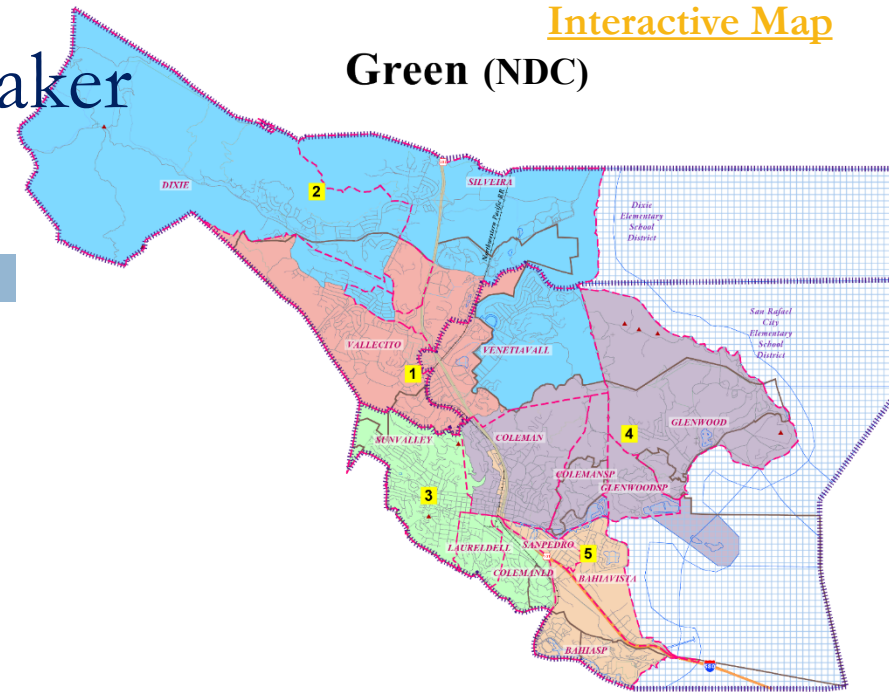
# 4. Canal with Spinnaker

Green (NDC)

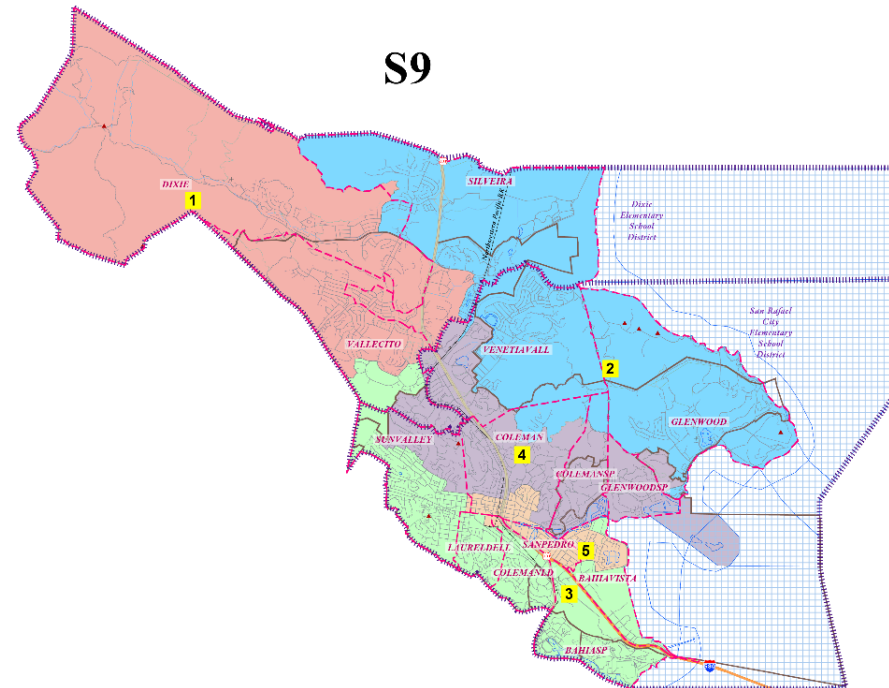
S6



©2018 CALIFEP



S9



©2018 CALIFEP



# Discussion

17

Goal is to narrow down to 2 or 3 “focus” maps

- Which map(s) do you like best? What is it that you like about those maps?
- How do the maps you like best relate to communities of interest’?

Now is the time to request any revised or new maps (for consideration at the next meeting), if the Board has any map change requests

- Note: New or revised maps must be submitted by August 14.

