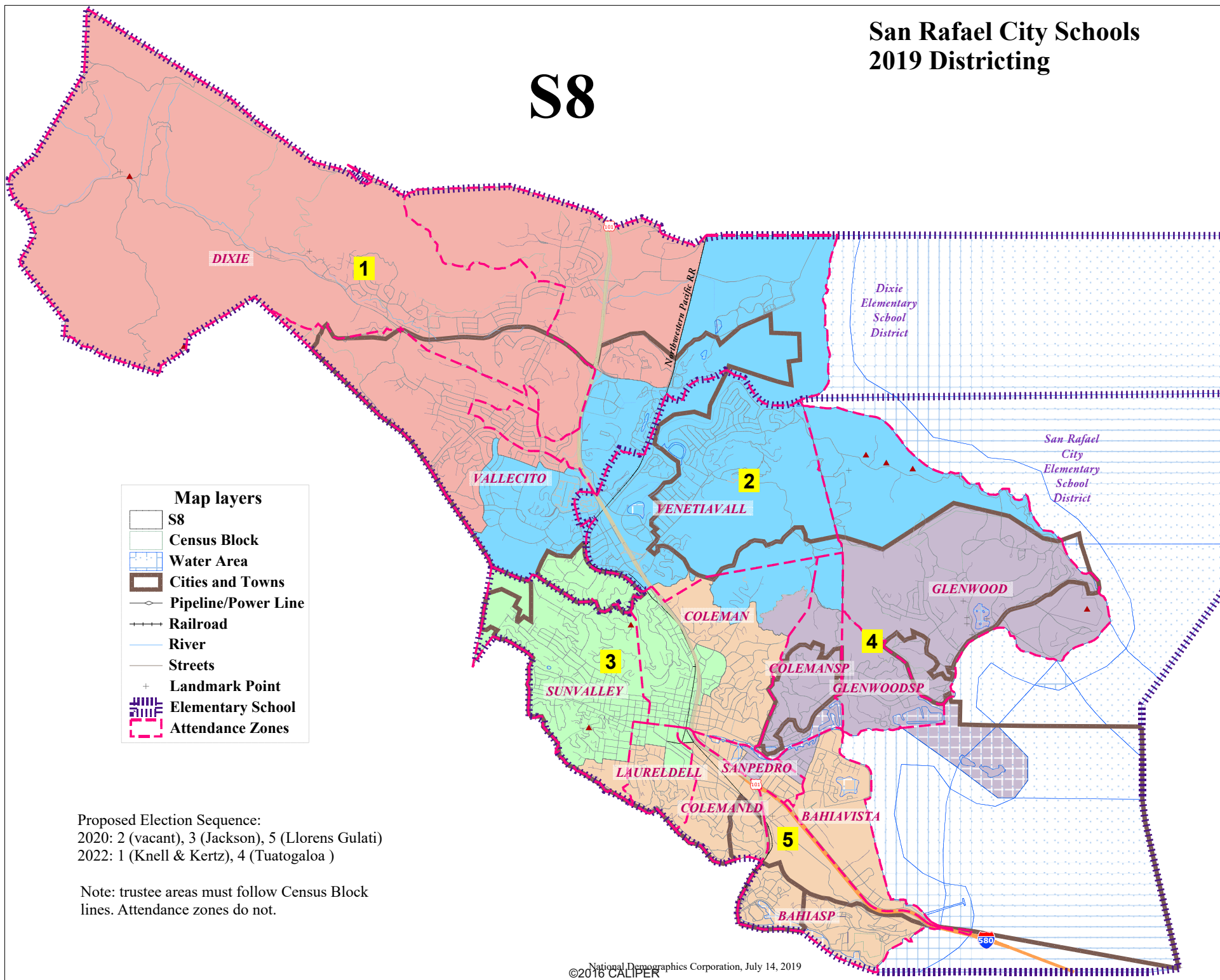


San Rafael City Schools 2019 Districting

S8



San Rafael Unified - Map S8

District		1	2	3	4	5	Total
Ideal	Total Pop	14,617	14,354	13,899	14,190	14,239	71,299
14,260	Deviation from ideal	357	94	-361	-70	-21	718
	% Deviation	2.50%	0.66%	-2.53%	-0.49%	-0.15%	5.04%
Total Pop	% Hisp	8%	20%	20%	52%	34%	27%
	% NH White	80%	66%	69%	42%	53%	62%
	% NH Black	2%	3%	3%	1%	3%	2%
	% Asian-American	9%	10%	6%	4%	9%	7%
Citizen Voting Age Pop	Total	11,805	11,017	10,403	6,353	8,622	48,200
	% Hisp	6%	6%	9%	17%	14%	10%
	% NH White	83%	77%	80%	74%	71%	78%
	% NH Black	1%	3%	5%	1%	5%	3%
	% Asian/Pac.Isl.	8%	11%	5%	8%	9%	8%
Voter Registration (Nov 2016)	Total	10,609	8,348	8,798	5,580	7,013	40,348
	% Latino est.	5%	10%	8%	8%	11%	8%
	% Spanish-Surnamed	4%	9%	7%	8%	10%	7%
	% Asian-Surnamed	4%	4%	3%	3%	5%	4%
	% Filipino-Surnamed	1%	1%	1%	0%	1%	1%
	% NH White est.	89%	80%	84%	86%	78%	83%
	% NH Black	1%	3%	4%	1%	4%	3%
Voter Turnout (Nov 2016)	Total	9,519	7,276	7,626	4,943	6,002	35,366
	% Latino est.	5%	10%	7%	7%	10%	8%
	% Spanish-Surnamed	4%	9%	6%	7%	9%	7%
	% Asian-Surnamed	4%	4%	3%	3%	4%	4%
	% Filipino-Surnamed	1%	1%	1%	0%	1%	1%
	% NH White est.	89%	80%	85%	87%	79%	84%
	% NH Black	1%	3%	4%	1%	5%	3%
Voter Turnout (Nov 2014)	Total	6,472	4,385	4,499	3,303	3,452	22,113
	% Latino est.	4%	6%	5%	4%	7%	5%
	% Spanish-Surnamed	3%	6%	4%	4%	6%	4%
	% Asian-Surnamed	4%	4%	3%	2%	3%	3%
	% Filipino-Surnamed	0%	1%	0%	0%	0%	0%
	% NH White est.	91%	86%	90%	91%	87%	89%
	% NH Black est.	1%	3%	2%	1%	3%	2%
ACS Pop. Est.	Total	15,628	15,602	14,247	13,641	15,539	74,658
Age	age0-19	21%	19%	19%	30%	25%	23%
	age20-60	48%	53%	58%	50%	53%	52%
	age60plus	31%	28%	23%	20%	22%	25%
Immigration	immigrants	16%	26%	16%	40%	32%	26%
	naturalized	69%	44%	35%	26%	29%	37%
Language spoken at home	english	82%	66%	78%	48%	56%	67%
	spanish	6%	17%	15%	46%	33%	23%
	asian-lang	3%	7%	2%	2%	5%	4%
	other lang	9%	10%	5%	4%	5%	7%
Language Fluency	Speaks Eng. "Less than Very Well"	6%	14%	9%	33%	24%	17%
Education (among those age 25+)	hs-grad	37%	45%	40%	30%	38%	38%
	bachelor	33%	29%	32%	23%	24%	28%
	graduatedegree	26%	19%	24%	16%	18%	21%
Child in Household	child-under18	28%	25%	24%	39%	29%	29%
Pct of Pop. Age 16+	employed	59%	61%	67%	63%	64%	63%
Household Income	income 0-25k	11%	14%	16%	17%	19%	15%
	income 25-50k	13%	19%	18%	20%	16%	17%
	income 50-75k	14%	14%	11%	11%	11%	12%
	income 75-200k	41%	36%	40%	31%	37%	38%
	income 200k-plus	22%	17%	15%	22%	16%	18%
Housing Stats	single family	81%	58%	54%	61%	64%	64%
	multi-family	19%	42%	46%	39%	36%	36%
	rented	23%	41%	55%	45%	47%	42%
	owned	77%	59%	45%	55%	53%	58%

Total population data from the 2010 Decennial Census.

Surname-based Voter Registration and Turnout data from the California Statewide Database.

Latino voter registration and turnout data are Spanish-surname counts adjusted using Census Population Department undercount estimates. NH White and NH Black registration and turnout counts estimated by NDC. Citizen Voting Age Pop., Age, Immigration, and other demographics from the 2012-2016 American Community Survey and Special Tabulation 5-year data.