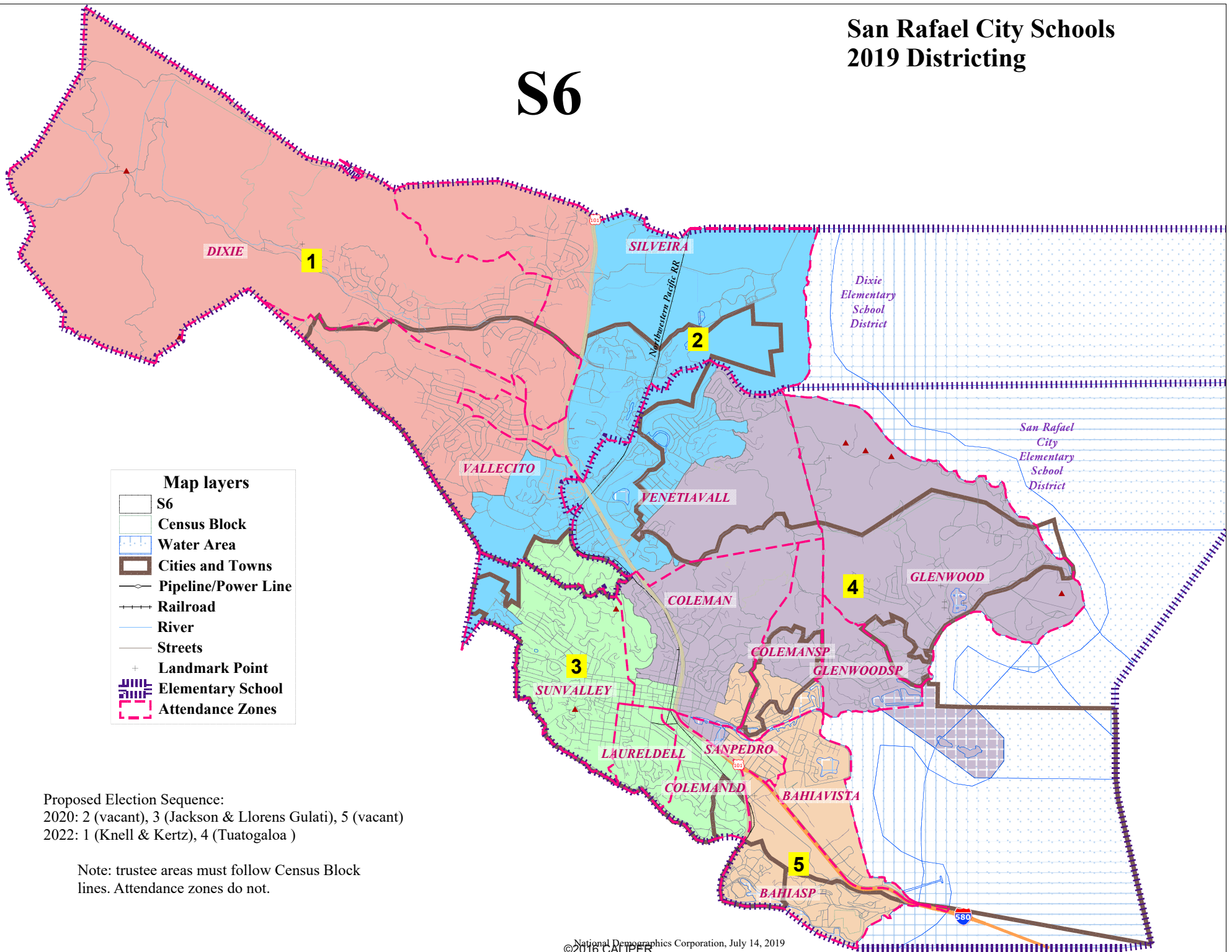


San Rafael City Schools 2019 Districting

S6



Proposed Election Sequence:
 2020: 2 (vacant), 3 (Jackson & Llorens Gulati), 5 (vacant)
 2022: 1 (Knell & Kertz), 4 (Tuatogaloa)

Note: trustee areas must follow Census Block lines. Attendance zones do not.

San Rafael Unified - Map S6

District		1	2	3	4	5	Total
Ideal	Total Pop	13,823	13,664	15,050	14,450	14,312	71,299
14,260	Deviation from ideal	-437	-596	790	190	52	1,386
	% Deviation	-3.06%	-4.18%	5.54%	1.33%	0.36%	9.72%
Total Pop	% Hisp	7%	19%	19%	17%	69%	27%
	% NH White	81%	66%	71%	72%	22%	62%
	% NH Black	1%	3%	2%	2%	2%	2%
	% Asian-American	9%	10%	6%	7%	6%	7%
Citizen Voting Age Pop	Total	10,946	10,642	11,208	10,658	4,747	48,200
	% Hisp	5%	7%	9%	7%	30%	10%
	% NH White	84%	77%	81%	79%	53%	78%
	% NH Black	1%	4%	5%	4%	3%	3%
	% Asian/Pac.Isl.	9%	9%	4%	9%	12%	8%
Voter Registration (Nov 2016)	Total	10,230	7,807	9,519	9,432	3,360	40,348
	% Latino est.	5%	10%	7%	7%	22%	8%
	% Spanish-Surnamed	4%	9%	7%	6%	20%	7%
	% Asian-Surnamed	4%	4%	3%	3%	8%	4%
	% Filipino-Surnamed	1%	1%	1%	1%	1%	1%
	% NH White est.	89%	80%	85%	85%	64%	83%
	% NH Black	1%	3%	4%	3%	3%	3%
Voter Turnout (Nov 2016)	Total	9,198	6,781	8,345	8,317	2,725	35,366
	% Latino est.	5%	10%	7%	6%	20%	8%
	% Spanish-Surnamed	4%	9%	6%	6%	18%	7%
	% Asian-Surnamed	4%	4%	3%	3%	7%	4%
	% Filipino-Surnamed	1%	1%	1%	0%	1%	1%
	% NH White est.	89%	81%	86%	86%	67%	84%
	% NH Black	1%	3%	4%	3%	3%	3%
Voter Turnout (Nov 2014)	Total	6,289	4,079	5,019	5,308	1,418	22,113
	% Latino est.	4%	6%	4%	4%	12%	5%
	% Spanish-Surnamed	3%	5%	4%	4%	11%	4%
	% Asian-Surnamed	4%	3%	3%	2%	6%	3%
	% Filipino-Surnamed	0%	1%	0%	0%	0%	0%
	% NH White est.	91%	86%	91%	91%	77%	89%
	% NH Black est.	1%	3%	2%	2%	4%	2%
ACS Pop. Est.	Total	14,770	14,675	16,066	14,686	14,461	74,658
Age	age0-19	22%	18%	21%	21%	32%	23%
	age20-60	47%	53%	57%	48%	56%	52%
	age60plus	31%	29%	22%	31%	12%	25%
Immigration	immigrants	16%	25%	19%	19%	51%	26%
	naturalized	70%	46%	32%	51%	19%	37%
Language spoken at home	english	83%	67%	74%	79%	27%	67%
	spanish	6%	16%	20%	12%	64%	23%
	asian-lang	3%	7%	3%	2%	6%	4%
	other lang	8%	10%	4%	8%	3%	7%
Language Fluency	Speaks Eng. "Less than Very Well"	5%	14%	11%	9%	48%	17%
Education (among those age 25+)	hs-grad	36%	44%	41%	34%	35%	38%
	bachelor	33%	29%	29%	34%	14%	28%
	graduatedegree	27%	19%	22%	25%	9%	21%
Child in Household	child-under18	30%	23%	25%	24%	45%	29%
Pct of Pop. Age 16+	employed	58%	60%	66%	60%	68%	63%
Household Income	income 0-25k	10%	15%	17%	12%	23%	15%
	income 25-50k	11%	19%	18%	14%	24%	17%
	income 50-75k	12%	16%	11%	8%	13%	12%
	income 75-200k	42%	35%	40%	39%	30%	38%
	income 200k-plus	24%	15%	14%	27%	10%	18%
Housing Stats	single family	89%	52%	56%	78%	39%	64%
	multi-family	11%	48%	44%	22%	61%	36%
	rented	18%	45%	54%	31%	67%	42%
	owned	82%	55%	46%	69%	33%	58%

Total population data from the 2010 Decennial Census.

Surname-based Voter Registration and Turnout data from the California Statewide Database.

Latino voter registration and turnout data are Spanish-surname counts adjusted using Census Population Department undercount estimates. NH White and NH Black registration and turnout counts estimated by NDC. Citizen Voting Age Pop., Age, Immigration, and other demographics from the 2012-2016 American Community Survey and Special Tabulation 5-year data.