



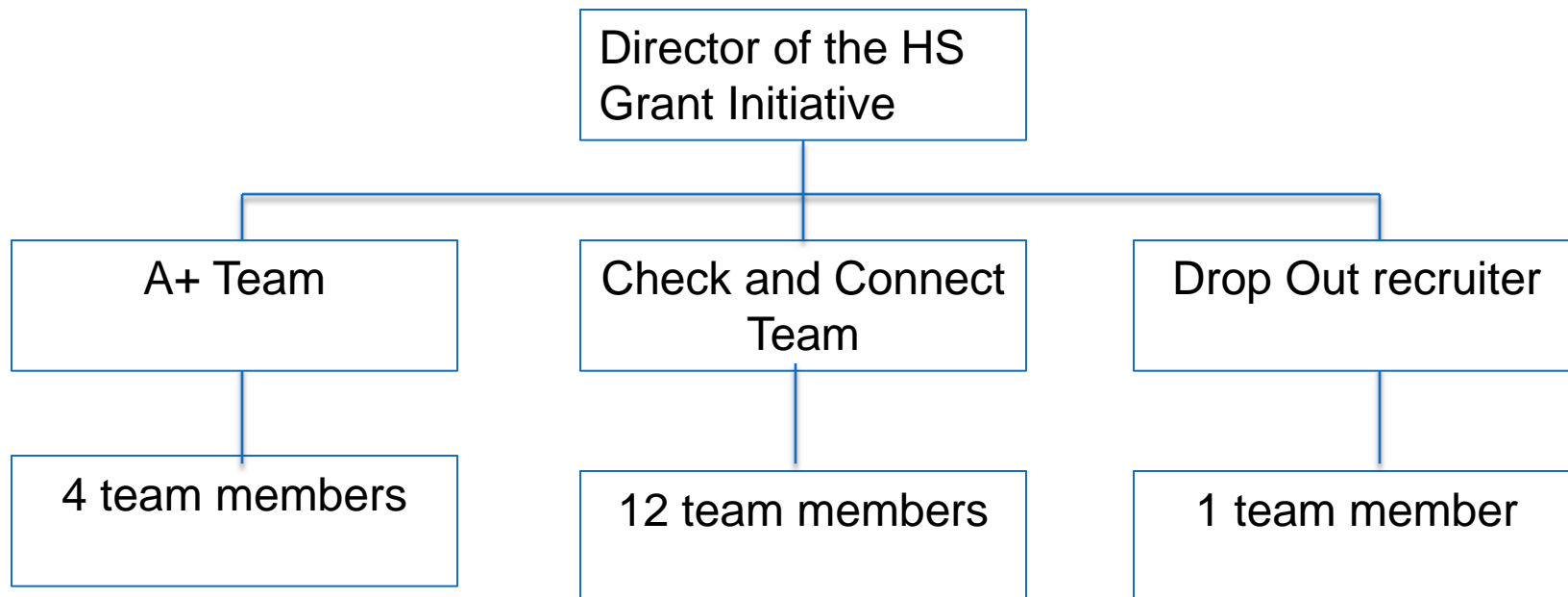
# **St. Louis Public School High School Initiative Grant Update**

David Hardy, Deputy Superintendent of Academic  
April 2, 2015

# OVERVIEW

- ▶ High School Graduation Initiative (HSGI) funded directly by the United States Department of Education
- ▶ There are 29 HSGI grants in the country and SLPS is ranked #1 because of the success
- ▶ Funded Approx. 1.4M per year for 5 years
- ▶ Grant runs through September of 2015

# Organizational Structure



# A+ Team

Consisted of 4 team members responsible for visits to 8<sup>th</sup> graders, FAFSA completion, and collecting A+ applications.

School Year	A+ Eligible	% of graduating class	Total # of students enrolled in CC	% of graduating class
2010-2011	109 students	5.1%	60 students	2.8%
2011-2012	228 students	9.7%	240 students	10.3%
2012-2013	297 students	18.4%	300 students	18.6%
2013-2014	351 students	21.1%	272 students	16.3%

# Check and Connect Team

A 12 members team with the responsible to identify 40 “potential high risk” 8<sup>th</sup> graders and 40+ “potential high risk” 9<sup>th</sup> graders to server as monitors and mentors to each of these students.

School	2010-11	2011-12	2012-13	2013-14	Total
Gateway HS	1	2	2	2	7
Northwest	4	2	3	6	15
Roosevelt	36	35	23	45	139
Soldan	0	2	3	3	8
Sumner	37	44	22	45	148
Vashon	34	36	27	44	141
<b>Total</b>	<b>112</b>	<b>121</b>	<b>80</b>	<b>145</b>	<b>458</b>

# Transition Summer School

A 12 member team that serve as teachers for Transition Summer School.

School Year	Number of students served
2010-2011	177
2011-2012	300
2012-2013	397
2013-2014	405

# Drop Out Recruiter

A team of one with the task of finding students who have left the district for 60 or more days and helping them return to schools.

School Year	Students recovered	# students that drop out/year*	% of total student body actually recovered*
2010-2011	50 students	888	5.6%
2011-2012	63 students	890	7.1%
2012-2013	70 students	564	12.4%
2013-2014	65 students	849	7.7%

\* Only in 6 of our high schools—numbers reflect this

# Analysis

Year	A+ Total	Total pop.	ROI	C&C Total	Total pop.	DO Total	Total DO Pop.
10'-11'	109	2,139		112	2,139	50	888
11'-12'	228	2,329		121	2,329	63	890
12'-13'	297	1,612		80	1,612	70	564
13'-14'	351	1,663		145	1,663	65	849

Red=ROI does not meet expectations

Yellow=ROI partially meets expectations

Green=ROI meets expectations



# Recommendations

- ▶ Adjust the roles and responsibilities of a smaller team
- ▶ Set clear targets and metrics to be monitored by leader of the team
- ▶ Restructure the organizational alignment of the program in the College and Career Readiness Office with limited GOB funding

# Questions?