



# BACK TO SCHOOL UPDATE

September 28, 2017



# AGENDA



- ❑ **Human Resources**
- ❑ **Transportation**
- ❑ **Curriculum**
- ❑ **Enrollment**

# STAFFING UPDATE



HIRES	2013-2014	2014-2015	2015-2016	2016-2017	JULY 2017 - PRESENT
Number of Teachers Hired	358	265	266	336	265
Number of TFA Teachers Hired	48	52	36	17	21
<b>TOTAL HIRES</b>	<b>406</b>	<b>317</b>	<b>302</b>	<b>353</b>	<b>286</b>

SEPARATIONS	2013-2014	2014-2015	2015-2016	2016-2017	July 2017 - Present
Number of Teachers Resigned	224	272	334	247	62
Number of Teachers Retired	54	64	51	52	7
Number of Teachers Terminated	30	64	35	23	1
Number of Other Teacher Separations (Death of Employee, Reduction in Force, etc.)	3	5	4	1	1
<b>TOTAL SEPARATIONS</b>	<b>311</b>	<b>405</b>	<b>424</b>	<b>323</b>	<b>71</b>

St. Louis Public Schools

# SCHOOL-BASED VACANCIES

VACANCIES	August 29, 2015	August 29, 2016	September 22, 2017
Teaching Staff	125	176.9	53*
Non-Teaching Staff	111	149	34
Principal/Assistant Principal	4	0	0
<b>TOTAL VACANCIES</b>	<b>240</b>	<b>349</b>	<b>87</b>

*\*This total will change after all Fall staffing adjustments have been completed.*

St. Louis Public Schools

# HARD TO FILL AREAS

VACANCIES	August 29, 2015	August 29, 2016	September 15, 2017
Foreign Language	4	4	1
Secondary Math	11	12	5
Secondary Science	12	19	7
English Speakers of Other Languages (ESOL)	10	4	1
Special Education	15	21	9
CTE	7	2	2
Music (Vocal & Instrumental)	8	10	8
Regular Classroom (Elementary)	15	50	0*
Kindergarten	9	11	0*
Pre-School	6	7	0*
Military Science	2	1	1
Art	2	3.9	4
Physical Education	6	10	5

# TRANSPORTATION: BUSES

BUS TYPE	2016-2017	2017-2018
Regular	199	197
SPED	78	79
Total Buses	277	276
Eligible Students	19,630	17,477

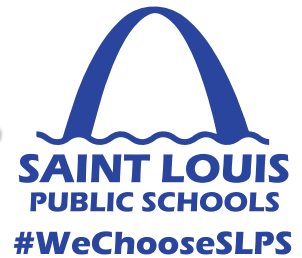
# TRANSPORTATION: ON-TIME PERFORMANCE



SEPTEMBER	2016-2017	2017-2018
Week 1	97%	97%
Week 2	94.5%	97%
Week 3	98%	97%

St. Louis Public Schools

# BUS GPS AND PARENT PORTAL TIMELINE



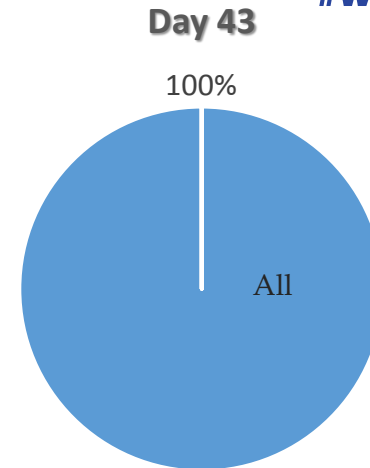
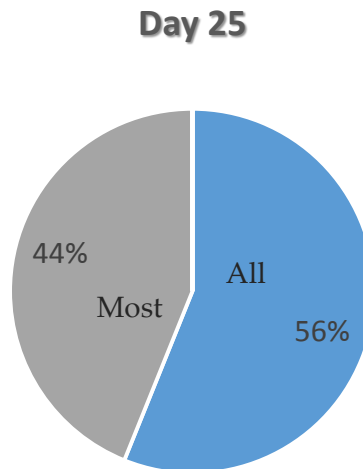
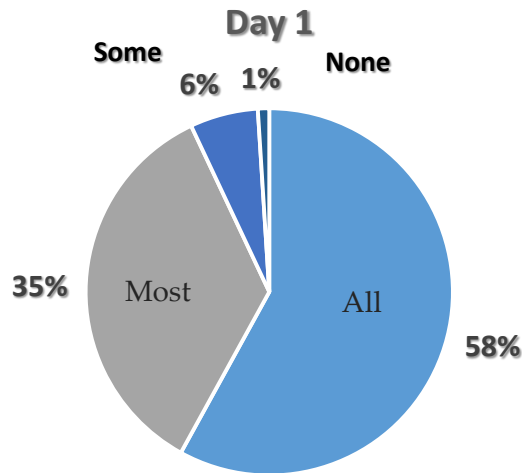
- ❑ **October 16, 2017**: First Pilot testing the Parent Portal on 83 buses @ 4 schools.
  - ❑ The Parent Portal [Web link](#) allows parents direct access to their child's transportation information in real time.
    - ❑ Reduced phone calls for common questions.
- ❑ **October 23, 2017**: Second testing phase with 50 additional buses.
- ❑ **November 6, 2017**: Launch additional 50 buses weekly until completion.

**Note: Total bus fleet is 276.**

St. Louis Public Schools



# CLASSROOMS HAVE ENOUGH TEXTBOOKS TO ACCOMMODATE ALL STUDENTS



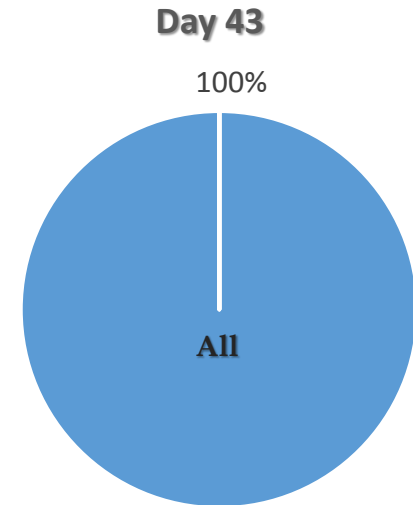
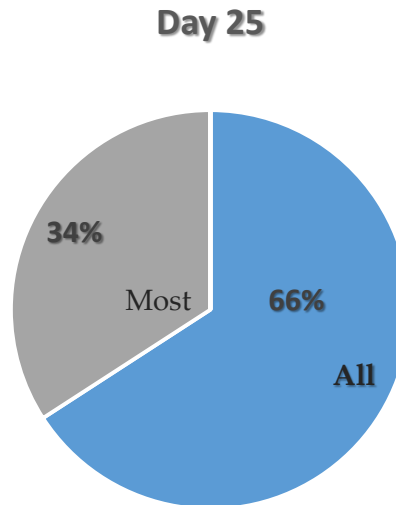
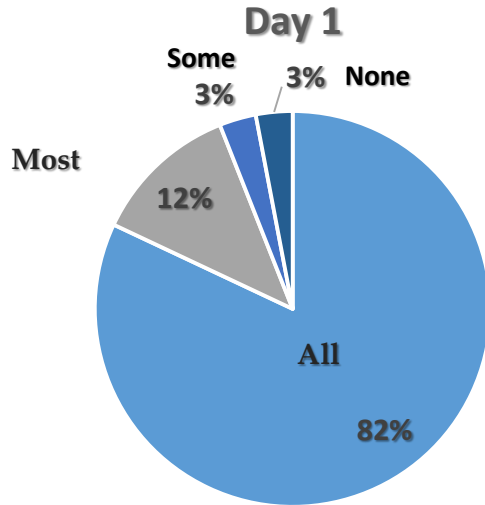
## Biggest Areas of Need

- Special Education ✓
- Advanced Placement courses at Metro/CSMB/McKinley ✓
- Enrollment shifts at NCNAA ✓

**Update on Curriculum/Textbook Needs as of October 17, 2017**

St. Louis Public Schools

# TEACHERS HAVE ALL CURRICULAR MATERIALS READY FOR EXECUTION



## Frequent Requests

- 2-5 Science and K-5 Social Studies
- Purchased kits and carts which are considered shared materials
- Multiple messages sent to schools and teachers

**Update on Teacher Readiness as of October 17, 2017**

St. Louis Public Schools

## Day 1 Needs

- ✓ Additional Handwriting books and resources for 135 special education classrooms
- ✓ Delivery of new materials for HS Math, K-5 Social Studies and 2-5 Science adoptions

## Day 25 Needs

- ✓ 30 additional AP World Language Textbooks
- ✓ Teacher Editions for expanded grade levels

## Day 43 Needs

- Additional novels for Middle School ELA curriculum so all students can take books home
- ✓ Previously, class sets were provided; now providing a copy to each student

**All needs met as of October 17, 2017**

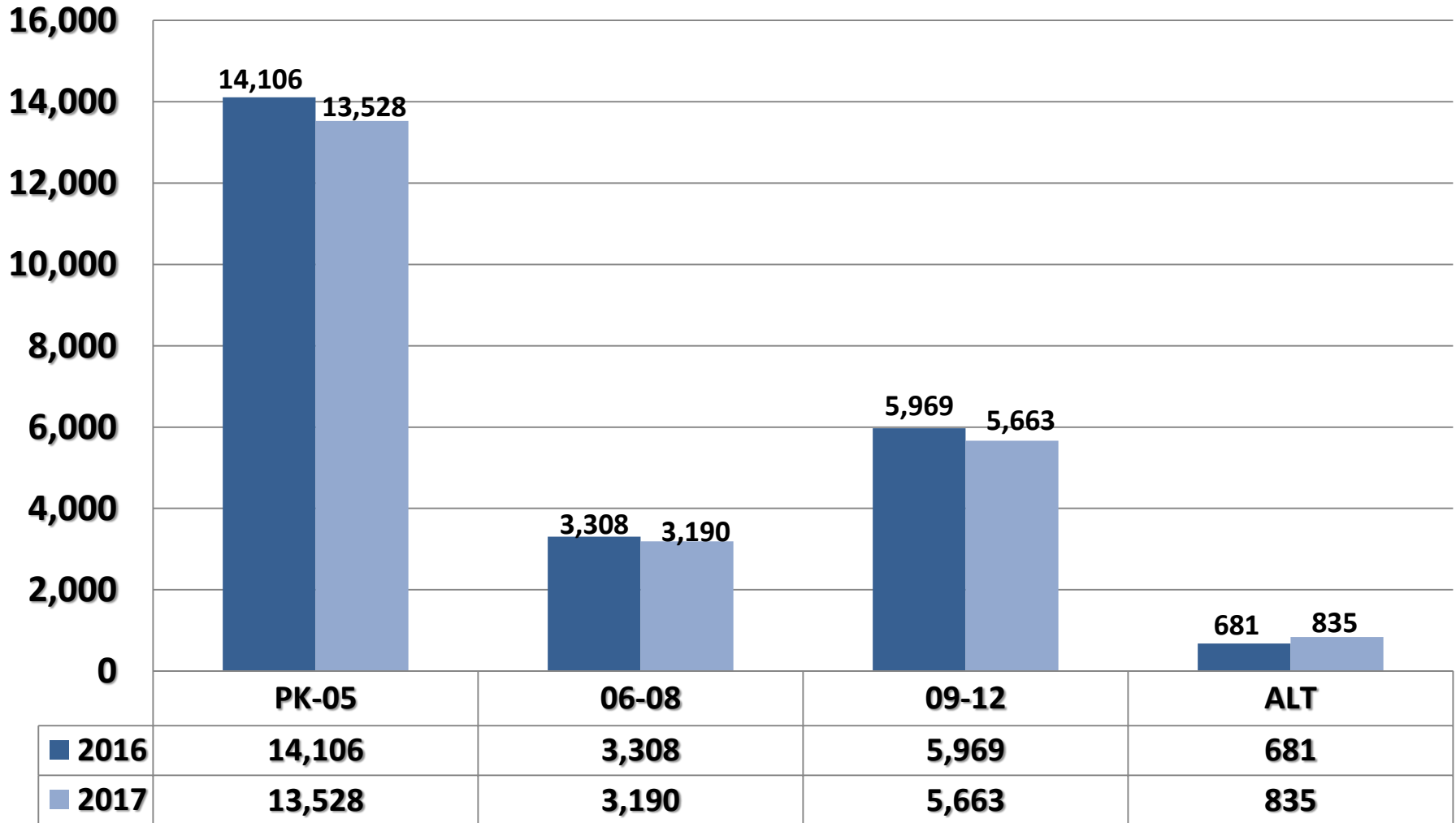
# Student Enrollment Comparison by School Level

September 28, 2016 vs. September 27, 2017

Variance: ELEM **-578**

MIDDLE **-118**

HIGH **-306**

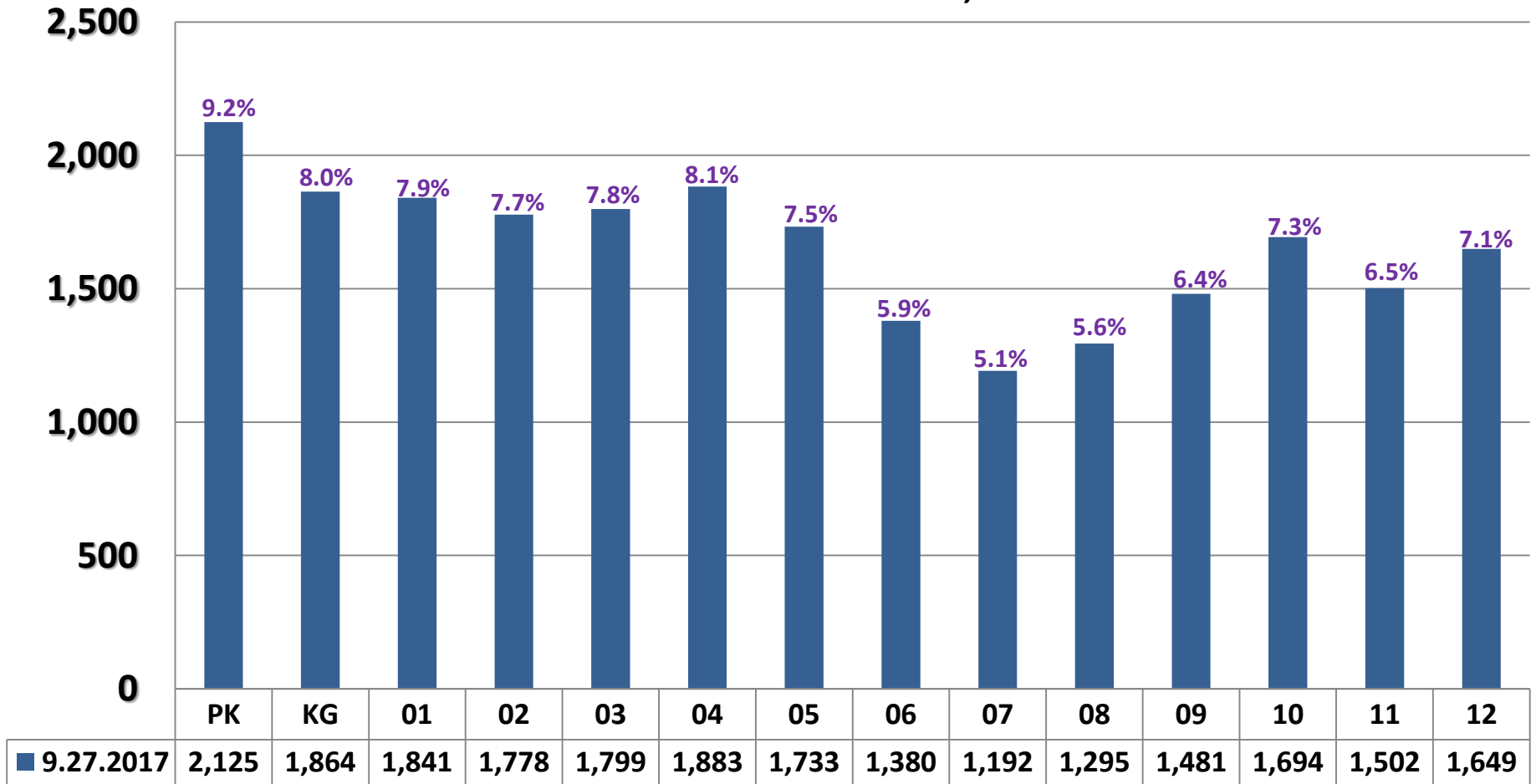


St. Louis Public Schools

# Student Enrollment by Grade Level

As of September 27, 2017

Current District Total = 23,216

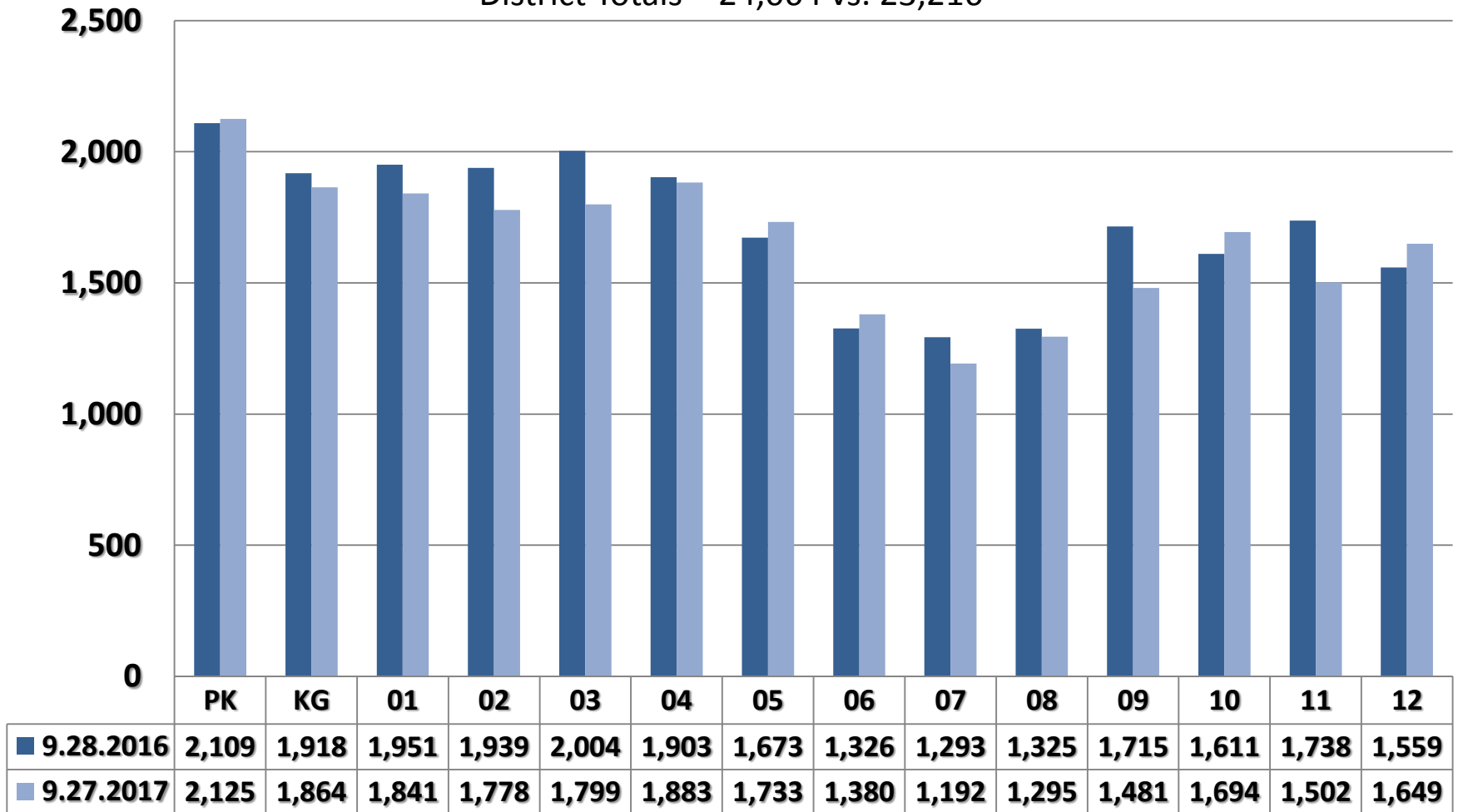


St. Louis Public Schools

# Student Enrollment Comparison by Grade Level

September 28, 2016 vs. September 27, 2017

District Totals = 24,064 vs. 23,216

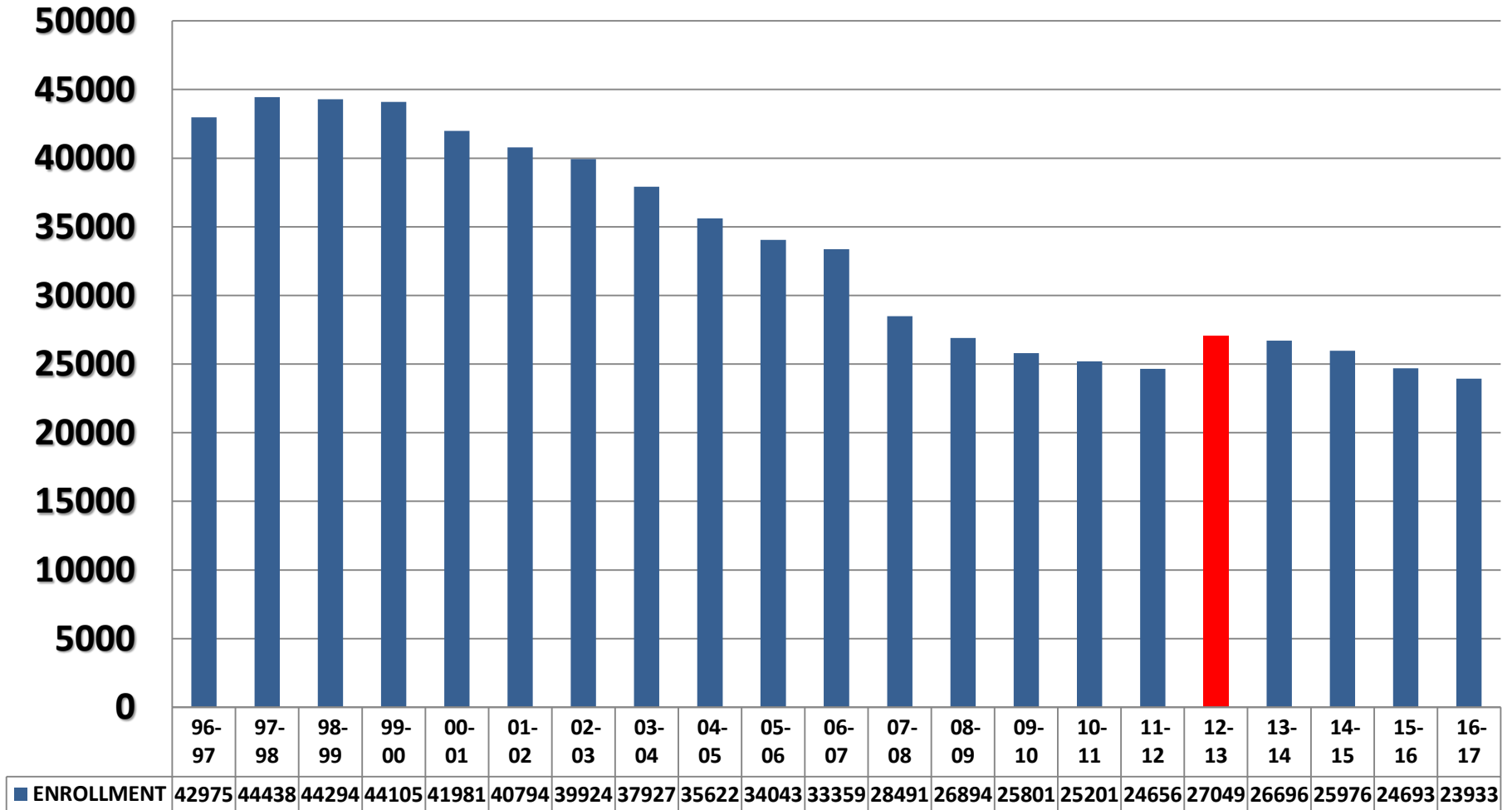


Day 30 – Variance = **-848**

St. Louis Public Schools

# 21 Year Student Enrollment Trend

Data Point = End of School Year

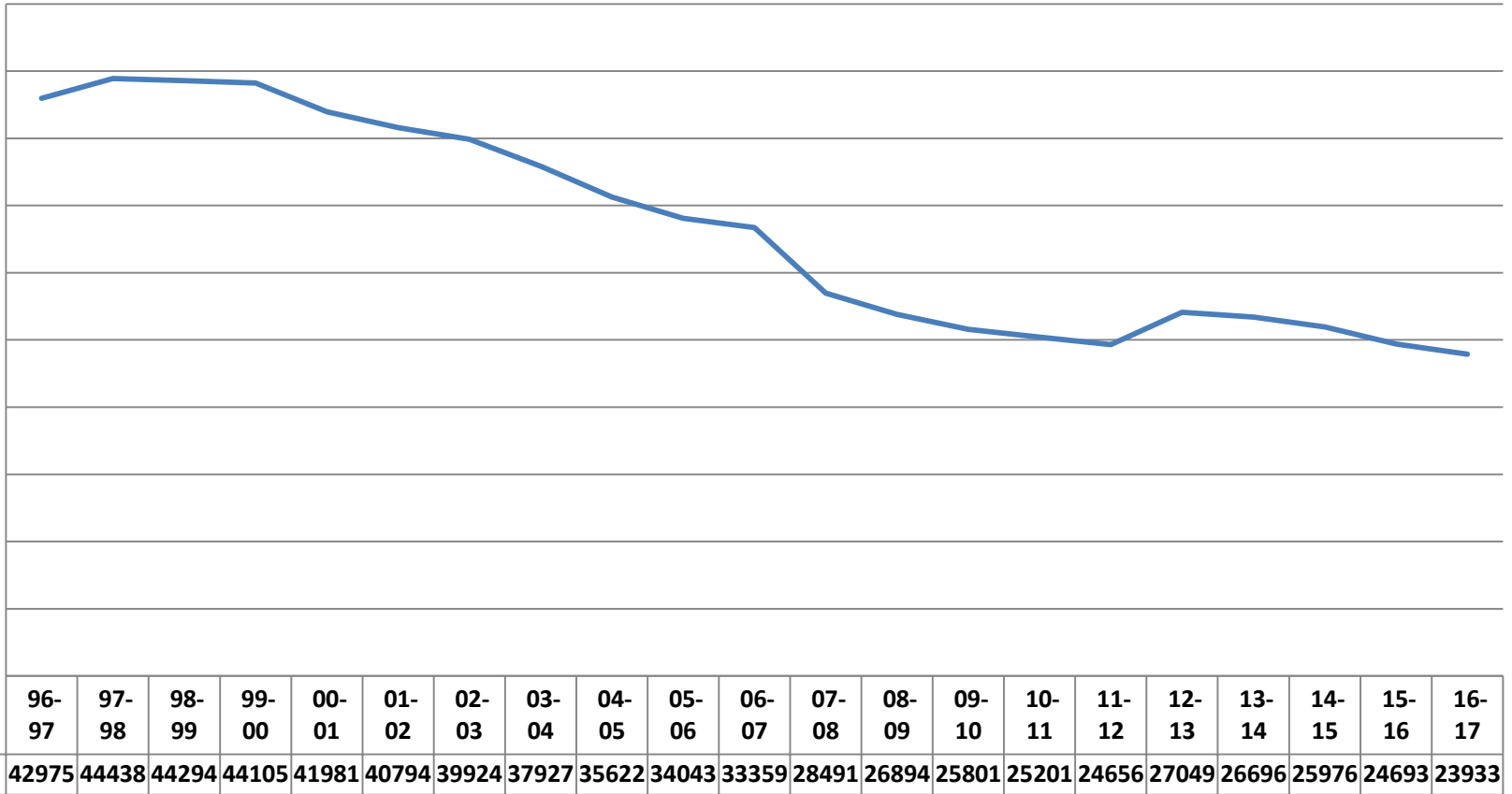


St. Louis Public Schools

# 21 Year Student Enrollment Trend

Data Point = End of School Year

50000  
45000  
40000  
35000  
30000  
25000  
20000  
15000  
10000  
5000  
0



Lowest since 2011 - 12

St. Louis Public Schools



# QUESTIONS?