



ST. LOUIS PUBLIC SCHOOLS

PROPOSITION S

CONSTRUCTION PROGRESS

Presented to:

Special Administrative Board

Roger L. CayCe and Ron Roberts

January 26, 2012



PROPOSITION S

REBUILDING ST. LOUIS PUBLIC SCHOOLS

WINDOW SHADE INSTALLATIONS BEFORE (TYPICAL)





PROPOSITION S

REBUILDING ST. LOUIS PUBLIC SCHOOLS

WINDOW SHADE INSTALLATIONS



MALLINCKRODT

AFTER



06/28/2011 22



SHERMAN



01/23/2012



MULLANPHY



MANN



****THIS
PRESENTATION
DISPLAYS 4 OF
18 SHADE
INSTALLATIONS***



PROPOSITION S

REBUILDING ST. LOUIS PUBLIC SCHOOLS

PLAYSCAPE INSTALLATIONS BEFORE & AFTER



LEXINGTON



NANCE



MALLINCKRODT



****THIS
PRESENTATION
DISPLAYS 3 OF
18 COMPLETED
PLAYSCAPE
INSTALLATIONS***



PROPOSITION S

REBUILDING ST. LOUIS PUBLIC SCHOOLS

PLAYSCAPE INSTALLATIONS
BEFORE & AFTER CONTINUED

LEXINGTON





PROPOSITION S

REBUILDING ST. LOUIS PUBLIC SCHOOLS

PLAYSCAPE INSTALLATIONS
BEFORE & AFTER CONTINUED

NANCE
NANCE





PROPOSITION S

REBUILDING ST. LOUIS PUBLIC SCHOOLS

PLAYSCAPE INSTALLATIONS
BEFORE & AFTER CONTINUED



MALLINCKRODT





PROPOSITION S

REBUILDING ST. LOUIS PUBLIC SCHOOLS

BLEACHER INSTALLATIONS BEFORE & AFTER



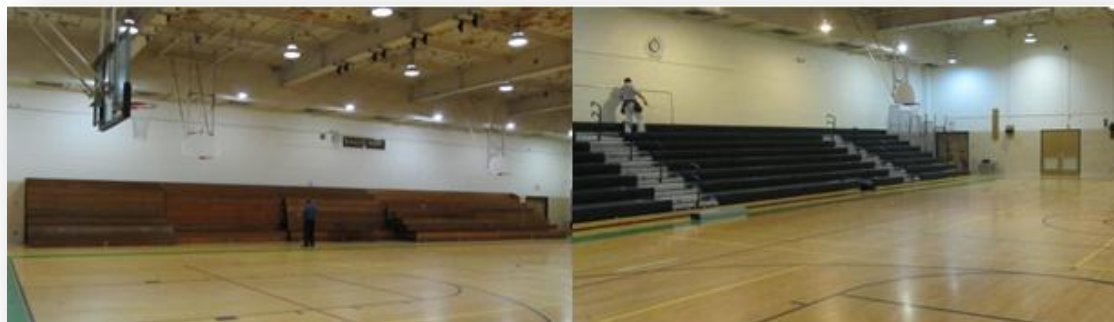
GATEWAY IT



BEAUMONT



CENTRAL





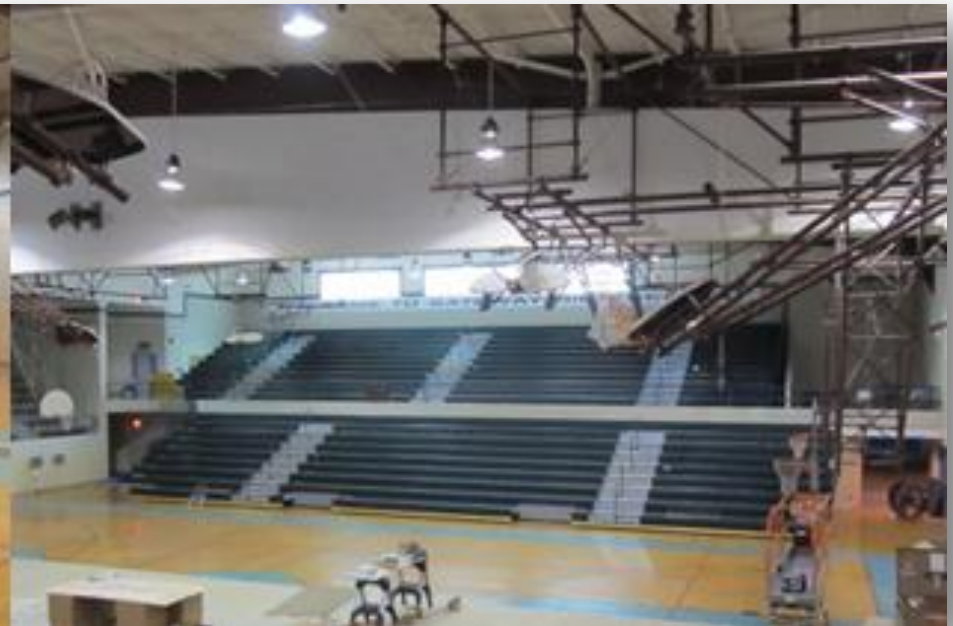
PROPOSITION S

REBUILDING ST. LOUIS PUBLIC SCHOOLS

BLEACHER INSTALLATIONS
BEFORE & AFTER CONTINUED



GATEWAY IT





PROPOSITION S

REBUILDING ST. LOUIS PUBLIC SCHOOLS

BLEACHER INSTALLATIONS
BEFORE & AFTER CONTINUED



BEAUMONT





PROPOSITION S

REBUILDING ST. LOUIS PUBLIC SCHOOLS

BLEACHER INSTALLATIONS BEFORE & AFTER CONTINUED

CVPA
CENTRAL





PROPOSITION S

REBUILDING ST. LOUIS PUBLIC SCHOOLS

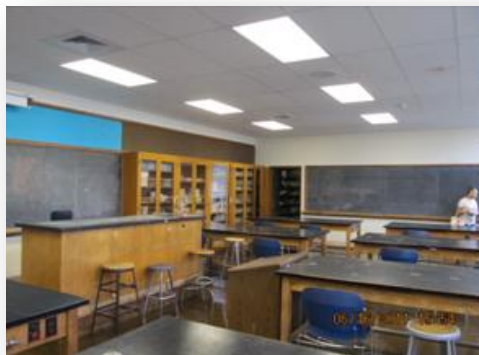
SCIENCE LAB RENOVATIONS BEFORE & AFTER



CLEVELAND
ROOM 112

****THIS PRESENTATION
DISPLAYS 2 OF 10 SCIENCE
LAB RENOVATIONS***

CVPA
CENTRAL
ROOM 212





PROPOSITION S

REBUILDING ST. LOUIS PUBLIC SCHOOLS



CLEVELAND
ROOM 112

SCIENCE LAB RENOVATIONS BEFORE & AFTER CONTINUED



EAST SIDE



PROPOSITION S

REBUILDING ST. LOUIS PUBLIC SCHOOLS



CLEVELAND
ROOM 112

SCIENCE LAB RENOVATIONS BEFORE & AFTER CONTINUED



WEST SIDE



PROPOSITION S

REBUILDING ST. LOUIS PUBLIC SCHOOLS

SCIENCE LAB RENOVATIONS BEFORE & AFTER CONTINUED

CVPA
CENTRAL
ROOM 212



EAST SIDE



PROPOSITION S

REBUILDING ST. LOUIS PUBLIC SCHOOLS

SCIENCE LAB RENOVATIONS BEFORE & AFTER CONTINUED

CVPA
CENTRAL
ROOM 212



WEST SIDE



PROPOSITION S

REBUILDING ST. LOUIS PUBLIC SCHOOLS

CAFETERIA RENOVATIONS BEFORE & AFTER

CVPA
CENTRAL

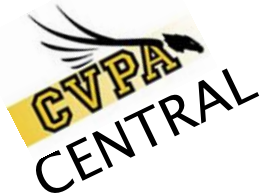


CAFETERIA



PROPOSITION S

REBUILDING ST. LOUIS PUBLIC SCHOOLS



CAFETERIA RENOVATIONS BEFORE & AFTER CONTINUED



CAFETERIA HALLWAY



PROPOSITION S

REBUILDING ST. LOUIS PUBLIC SCHOOLS

CAREER TECHNICAL EDUCATION RENOVATIONS BEFORE & AFTER



COSMETOLOGY LAB



PROPOSITION S

REBUILDING ST. LOUIS PUBLIC SCHOOLS

CAREER TECHNICAL EDUCATION RENOVATIONS BEFORE & AFTER CONTINUED



COSMETOLOGY LAB



PROPOSITION S

REBUILDING ST. LOUIS PUBLIC SCHOOLS

CAREER TECHNICAL EDUCATION RENOVATIONS BEFORE & AFTER CONTINUED



1 OF 4 CTE CLASSROOMS



PROPOSITION S

REBUILDING ST. LOUIS PUBLIC SCHOOLS

WATERPROOFING & TUCKPOINTING BEFORE & AFTER



INTERIOR PLASTER



PROPOSITION S

REBUILDING ST. LOUIS PUBLIC SCHOOLS

WATERPROOFING & TUCKPOINTING BEFORE & AFTER CONTINUED



INTERIOR PLASTER



PROPOSITION S

REBUILDING ST. LOUIS PUBLIC SCHOOLS

WATERPROOFING & TUCKPOINTING BEFORE & AFTER CONTINUED



INTERIOR PLASTER COMPLETED



PROPOSITION S

REBUILDING ST. LOUIS PUBLIC SCHOOLS

WATERPROOFING & TUCKPOINTING BEFORE & AFTER CONTINUED



EXTERIOR TUCKPOINTING



PROPOSITION S

REBUILDING ST. LOUIS PUBLIC SCHOOLS

WATERPROOFING & TUCKPOINTING BEFORE & AFTER CONTINUED



EXTERIOR TUCKPOINTING COMPLETE



PROPOSITION S

REBUILDING ST. LOUIS PUBLIC SCHOOLS

ATHLETIC FIELD RENOVATIONS BEFORE & AFTER

GATEWAY IT





PROPOSITION S

REBUILDING ST. LOUIS PUBLIC SCHOOLS

ATHLETIC FIELD RENOVATIONS BEFORE & AFTER CONTINUED

GATEWAY IT



REMOVAL
OF
EXISTING
FIELD



PROPOSITION S

REBUILDING ST. LOUIS PUBLIC SCHOOLS

ATHLETIC FIELD RENOVATIONS BEFORE & AFTER CONTINUED

GATEWAY IT



GRADING OF FIELD SUB BASE



PROPOSITION S

REBUILDING ST. LOUIS PUBLIC SCHOOLS

ATHLETIC FIELD RENOVATIONS BEFORE & AFTER CONTINUED

GATEWAY IT



FIELD
INSTALLED



PROPOSITION S

REBUILDING ST. LOUIS PUBLIC SCHOOLS



Mason School
Room 202



PROPOSITION S

REBUILDING ST. LOUIS PUBLIC SCHOOLS

September 14, 2011

Dear Dr Adams,

Thank you for this magnificent playground. I can't wait to play on it. I am thankful we did it now when I still want to play on playgrounds. Even though it does not have monkey bars or swings it still looks great. Thank you!

I love that it is green like green for Mason dragons. Woo Hoo! My favorite part of it is it has space steps, I don't know what they are called for sure though. I can't believe next week I get to play on it. Ye! The playground looks amazing, so much more stuff to do.

Finally, I am thankful that no one can brag saying that their school has a playground and mine does not. In the future when I work at Mason I will tell my class that I was here when the men build our playground. Thank you again for using the money you did for getting us to have a playground to play on. Woo Hoo! Thank you Mrs. Lato and Dr. Adams!

Your friend,
Annie Wilson

RECEIVED
Office 11



Non Air Conditioned Schools

- Buder
- Mallinckrodt
- Mann
- Meda P
- Shenandoah
- Sherman

HVAC PROJECTS

- ▶ Buder Est. \$1.5 M
 - Bid Issuance 1/9/12
 - Bid Due 2/23/12
- ▶ Mallinckrodt Est. \$1.5 M
 - Bid Issuance 1/9/12
 - Bid Due 2/23/12
- ▶ Gateway IT Window A/C \$50 K
 - Bid Issuance 2/10/12
 - Bid Due 3/5/12



HVAC BOND BUDGET

Month/Yr	A/C Projects			Total Projected Est.
Feb-12	Buder			\$1,500,000.00
Feb-12	Mallinckrodt			\$1,500,000.00
Mar-12	Gateway IT Window A/C			\$50,000.00
	Total Estimated Costs			\$3,050,000.00
	Total Budget (as of Feb 1-2012))			\$6,630,017.00
	What's Left after Nov 2012			\$3,580,017.00



PROPOSITION S

REBUILDING ST. LOUIS PUBLIC SCHOOLS

QUESTIONS & ANSWERS