



Summer School, 2011

Dr. Carlinda Purcell,
Deputy Superintendent for Academic Services

Sheila Smith-Anderson,
Executive Director, Curriculum and Instruction

Dates: June 6, 2011 – June 30, 2011

Hours: Tier 1: 8:00 – 2:20

Tier 2: 9:00 – 3:20



District Accountability Plan

- ▶ Goal 1: Student Performance
 - Objective I.A. The District will provide the necessary resources to ensure all SLPS students perform at/above grade level in reading and math and significantly improve instructional effectiveness as evidenced by improved student performance.

Summer School Goals

- To significantly impact the academic achievement of selected students in the area of reading, math, and early childhood readiness.
- To provide support for students to prevent a learning gap that traditionally occurs over the summer.

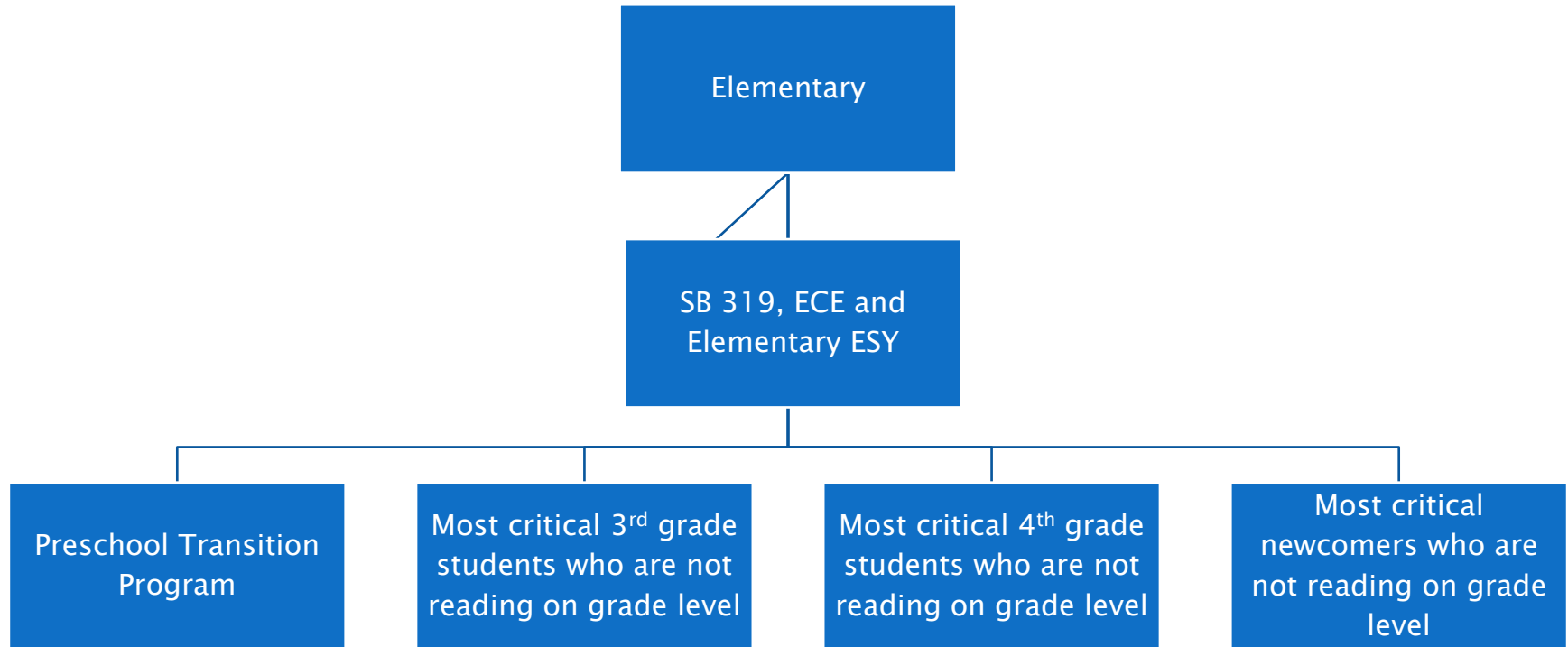


Proposed Sites

Elementary (# of partner)	Middle	High (# of partners)
Ford (8)	Gateway	Beaumont
Froebel (9)		Carnahan (3)
Gateway (3)		Clyde C. Miller (2)
Henry (8)		Griscom
International Welcome Center		Nottingham CAJT (1)
Shaw (5)		Northwest (2)
Sigel (5)		Soldan (2)
Stix (1)		

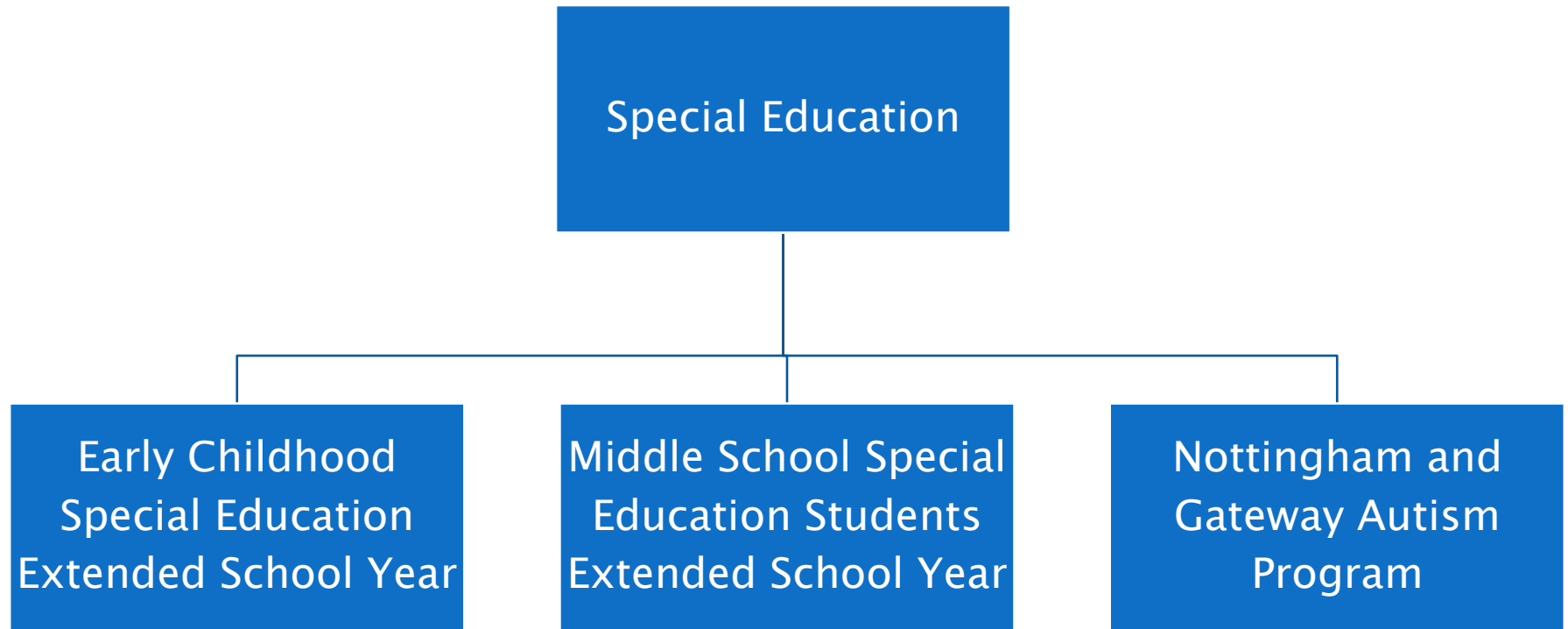


Summer School Programming



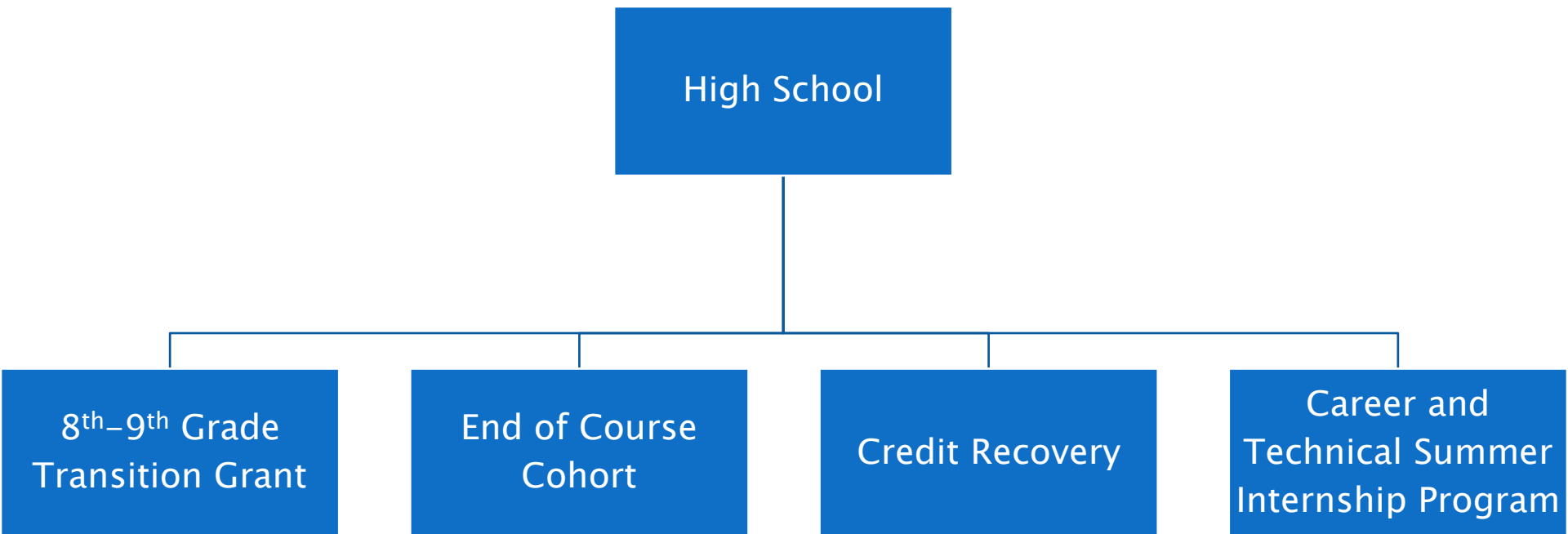


Summer School Programming





Summer School Programming





Summer Learning Opportunities

- ▶ The Office of Community Education is in the process of compiling a list of camps and programs in the St. Louis Metropolitan area that will be disseminated to schools and published to the SLPS website.
- ▶ Most of the events are at a nominal fee or free.



Summation

- ▶ Summer School is designed for students who
 - have never had a preschool experience;
 - are required to attend under Senate Bill 319;
 - are required by the Individualized Education Plan;
 - are transitioning from 8th to 9th grade;
 - need credits to graduate;
 - are in the EOC Cohort; and
 - have summer internships.
- ▶ Proposed number of sites: 16
- ▶ Proposed budget: \$2,000,000.00
 - Personnel
 - Professional Development
 - Instructional Materials and Supplies
 - Contracts