



Missouri School Improvement Grant 2010–2011 End of Year 1 Report

Dr. Robert Taylor and Dr. Dennis Dorsey, DESE
Michael Haggren, Associate Superintendent

And the Office of Innovation Turnaround Coordinators:
Romney Edwards (HR, General), Carmen Hill (HR), Ray Cummings
(Local 420 Turnaround Officer) Arnetta Fraction (Accountability
Turnaround Officer), and
Lance Jones (Accountability)



Agenda

- The intent of the grant
- Schools affected
- Accomplishments
- Major data (dash boards)
- Major initiatives
- Next steps
- Third year goals

The Missouri School Improvement Grant (MOSIG) is a three year initiative that engages the lowest 5% of performing schools by restructuring processes to support Turnaround and Transformation models that ultimately improve student learning and academic success.

SLPS Eleven EPIC Schools

year 2: 2011-2012 figures

Year 1 (2010-2011)

Year 2 (2011-2012)

School	Amount Per School	Amount Per Pupil	Amount Per School	Amount Per Pupil
Ashland ES (Turnaround Model)	\$353,737	\$1,702	\$306,775	\$989
Columbia ES (Turnaround Model)	\$356,608	\$1,758	\$316,623	\$1,749
Fanning MS (Transformation Model)	\$444,175	\$1,366	\$302,772	\$865
Hamilton ES (Turnaround Model)	\$363,928	\$1,151	\$328,256	\$1,094
Jefferson ES (Transformation Model)	\$340,193	\$1,440	\$297,412	\$1,389
Langston MS (Transformation Model)	\$436,579	\$1,500	\$306,667	\$849
L'Ouverture MS (Transformation Model)	\$441,804	\$1,800	\$306,667	\$1,369
Mann ES (Turnaround Model)	\$380,419	\$1,683	\$327,387	\$1,387
Sigel ES (Turnaround Model)	\$382,436	\$1,262	\$327,673	\$1,046
Vashon HS (Turnaround Model)	\$399,827	\$727	\$317,780	\$546
Walbridge ES (Turnaround Model)	\$377,942	\$1,044	\$334,714	\$1,097
DISTRICT TOTAL/AVG PER PUPIL	\$4,277,648	\$1,264	\$3,472,726	\$1,128

Successes!

MAP/EOC Communication Arts Performance

- **8 SIG schools have increased Proficient/Advanced Performance in Communications Arts**
 - ❖ Columbia Elementary
 - ❖ Hamilton Elementary
 - ❖ Mann Elementary
 - ❖ Sigel Elementary
 - ❖ Walbridge Elementary
 - ❖ Fanning Middle
 - ❖ L'Ouverture Middle
 - ❖ Vashon High
- **5 SIG schools have increased Basic/Decreased Below Basic in Communication Arts**
 - ❖ Ashland Elementary
 - ❖ Columbia Elementary
 - ❖ Sigel Elementary
 - ❖ Fanning Middle
 - ❖ L'Ouverture Middle
- **Columbia Elementary School achieved Annual Yearly Progress (AYP) Status**

Successes! (cont)

MAP/EOC Mathematics Performance

- **8 SIG schools have increased Proficient/Advanced Performance in Mathematics**
 - ❖ Columbia Elementary
 - ❖ Hamilton Elementary
 - ❖ Mann Elementary
 - ❖ Sigel Elementary
 - ❖ Walbridge Elementary
 - ❖ Fanning Middle
 - ❖ L'Ouverture Middle
 - ❖ Vashon High
- **6 SIG schools have increased Basic/Decreased Below Basic Performance in Mathematics**
 - ❖ Columbia Elementary
 - ❖ Hamilton Elementary
 - ❖ Jefferson Elementary
 - ❖ Sigel Elementary
 - ❖ Walbridge Elementary
 - ❖ Fanning Middle
- **Columbia Elementary School achieved Annual Yearly Progress (AYP) Status**

Successes! (cont)

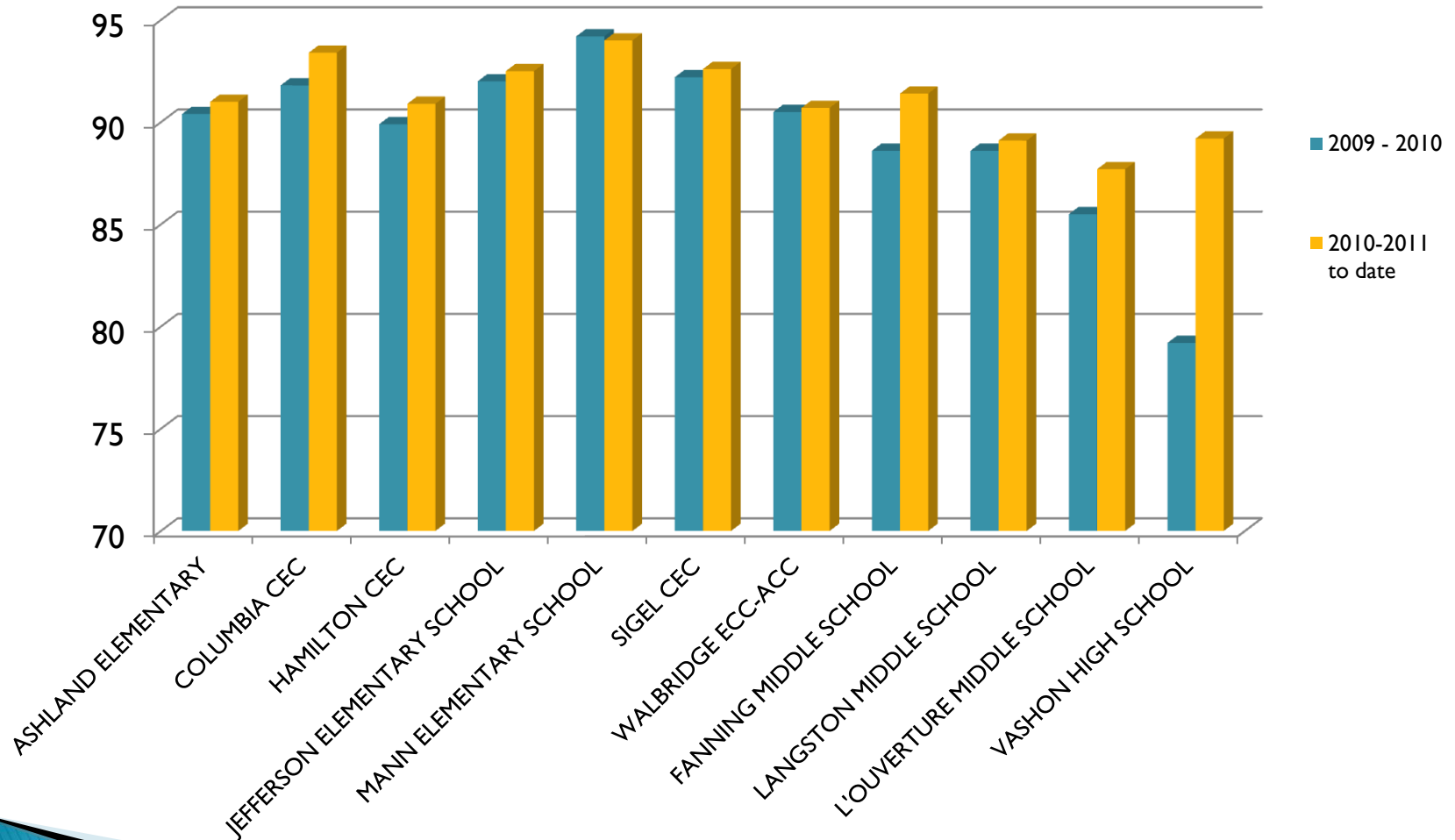
Attendance

- 10 out of 11 SIG schools have increased ADA
 - ❖ Mann ES is the only SIG school to decrease in attendance from 94.2% to 94% to date. Despite decrease, Mann currently holds the highest attendance among OI schools and most SLPS schools.

- 9 out of 11 SIG schools have 90% or better ADA
 - ❖ L' Overture ADA is currently about 88% (increased about 2%)
 - ❖ Vashon ADA is currently about 89% (increased 10% from 2009–10)

Successes! (Cont)

Attendance (ADA)



Successes! (cont)

Discipline

- 8 out of 11 SIG schools have decreased the total number of discipline events and Out of School Suspensions compared to 2009–10 school year

Notable Decreases in Discipline Events:

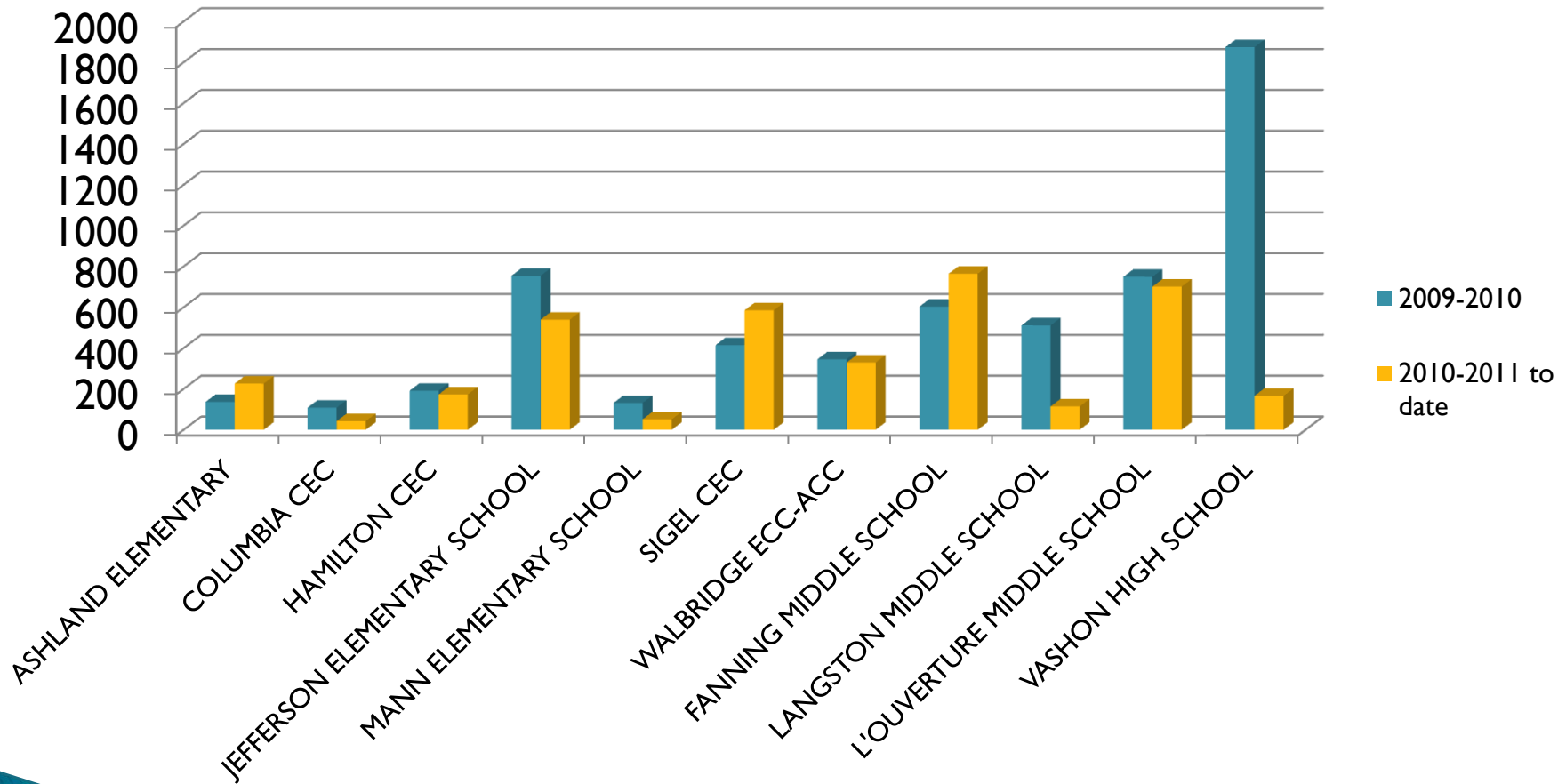
- ❖ Langston Middle decreased from 511 to 114
- ❖ Vashon decreased from 1864 to 166 discipline events

Notable Decreases in Out of School Suspensions:

- ❖ Fanning decreased OSS from 586 to 351
- ❖ Langston decreased OSS from 258 to 105
- ❖ Vashon decreased OSS from 840 to 68

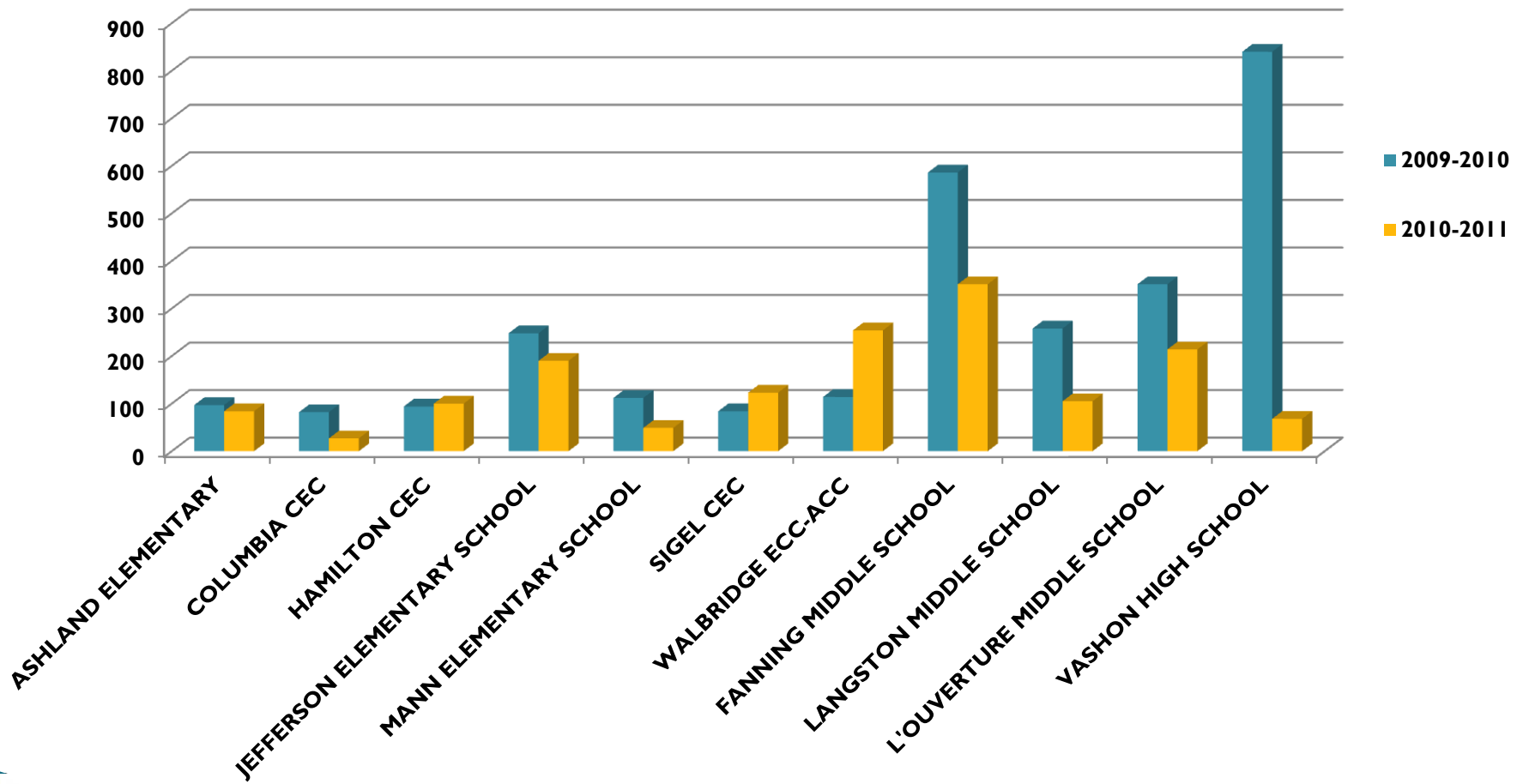
Successes! (Cont)

Discipline Events



Successes! (Cont)

Out of School Suspensions



Successes! (Cont.)

- Ouations for all eleven schools at DESE/MOSIG Board presentations in March and April 2011
 - ❖ Principals of all eleven schools presented the progress of SIG efforts in SLPS to Commissioner Castro and the Board
 - ❖ Board commended Dr. Adams for attending the meeting as first Superintendent to show support in person

- School climates deemed strong for all eleven schools during the DESE/MOSIG walk through in May 2011
 - ❖ DESE state representatives visited schools
 - ✓ Interviewed parents
 - ✓ Interviewed students
 - ✓ Visited and observed classrooms and spoke with teachers
 - ✓ Engaged Principal regarding strategy and next steps and vision

SIG Components, Implementation and Impact

Positions

(46 positions funded by SIG)

Counselor

Social Worker

Instructional Support Coordinator

Behavior Support Specialist

Family Educator

Math Specialist

SIG Components, Implementation and Impact Cont.

Technology

AimsWeb progress monitoring for grades
K-6

Netbooks, mobile laptop carts

Desktop Computers

Scholastic Reading Inventory

Listening Stations

Printers

SIG Components, Implementation and Impact Cont.

Professional Development

RTI workshops

Character Ed workshop

Arts Integration

Culturally Responsive Classroom/Behavior Management
Leadership Training @ Cooperating School District (CSD)
(Monthly)

Differentiated Instruction

Depth Of Knowledge/Questioning

MAP Prep

Library Resource Training

Office of Innovation EPIC Leadership PD (Monthly)

SIG Components, Implementation and Impact Cont.

Extended Learning Opportunities

Before and After School

Saturday School

Summer Academy

Forms and Processes

The Office of Innovation team works to regularly implement and support the following:

- School Climate Observation
- Classroom Observation
- Staff Mapping and Matrix
- Instructional Improvement Plan
- Leadership Data Dashboard (Leading Indicators)
- Data Dashboard (Lagging Indicators)

Forms and Processes: Staff Mapping

<i>Staff Names</i>	<i>Learning Objectives</i>	<i>DOK and Rigor</i>	<i>Engagement</i>	<i>Content</i>	<i>Classroom Management</i>	<i>Assessment</i>	<i>Instruction</i>
Communication Arts							
Teacher 1	Strong	Some	Strong	Strong	Strong	Some	Strong
Teacher 2	Some	Some	Low	Some	Some	Some	Some
Teacher 3	Strong	Some	Some	Strong	Some	Strong	Strong
Teacher 4	Strong	Some	Some	Strong	Some	Some	Some
Mathematics							
Teacher 5	Strong	Some	Some	Some	Some	Some	Some
Teacher 6	Strong	Strong	Strong	Strong	Strong	Strong	Strong
Teacher 7	Some	Some	Strong	Strong	Some	Low	Low
Teacher 8	Some	Low	Low	Some	Low	Low	Low
Science							
Teacher 9	Some	Some	Some	Some	Strong	Some	Some
Teacher 10	Some	Low	Low	Strong	Low	Low	Some
Teacher 11	Some	Low	Some	Strong	Low	Some	Low
Teacher 12	Low	Low	Low	Low	Low	Some	Low

Office of Innovation Data Dashboard:

Academics

- GPA
- Terra Nova
- Benchmarks
- MAP/EOC

Operations

- Student Attendance
- Teacher Attendance
- Free & Reduced Lunch
- Expulsions
- Suspensions
- Enrollment
- Dropout

School Initiatives

Integrate a developmentally appropriate three-tiered Scholastic reading program

- System 44 for students 3 or more years below reading level
- Read 180 for students 1 or two years below reading level
- Expert 21 for students at or above grade level

- After 6 months of implementation...
 - ❖ Fanning 1.4 yrs avg. growth
 - ❖ Langston 2.0 yrs avg. growth
 - ❖ L'Ouverture 1.3 yrs avg. growth

School Initiatives (Cont.)

- Increase Staff Effectiveness
- Improve Student Performance– AFTER & DURING School Tutoring (SIG Mandated)
- Effective Teaching Strategies
- Beginning Reading Instruction
- Reading Comprehensive
- Thinking Mathematics
- Data Analysis to Adjust Instruction
- Managing Antisocial Behavior Maximize the Value of Increased Learning Time Through the Use of Student Performance Data (SIG Mandated)

Partnerships:

Black Alliance for Educational Options (BAEO)

Parent and Community Support Centers
Housing and Job Assistance
Recruit other Community Partners
Organized Fundraising Events
Student Recruitment for Affiliate Schools
Tutoring
Support Behavior Management
And More

BAEO cont...

Academic Support

- Assisted with tracking after school remediation program
- Provided tutoring referrals
- Assisted 6th grade students with mathematics tutoring
- Assisted 2nd grade students with mathematics and reading skill development

BAEO cont...

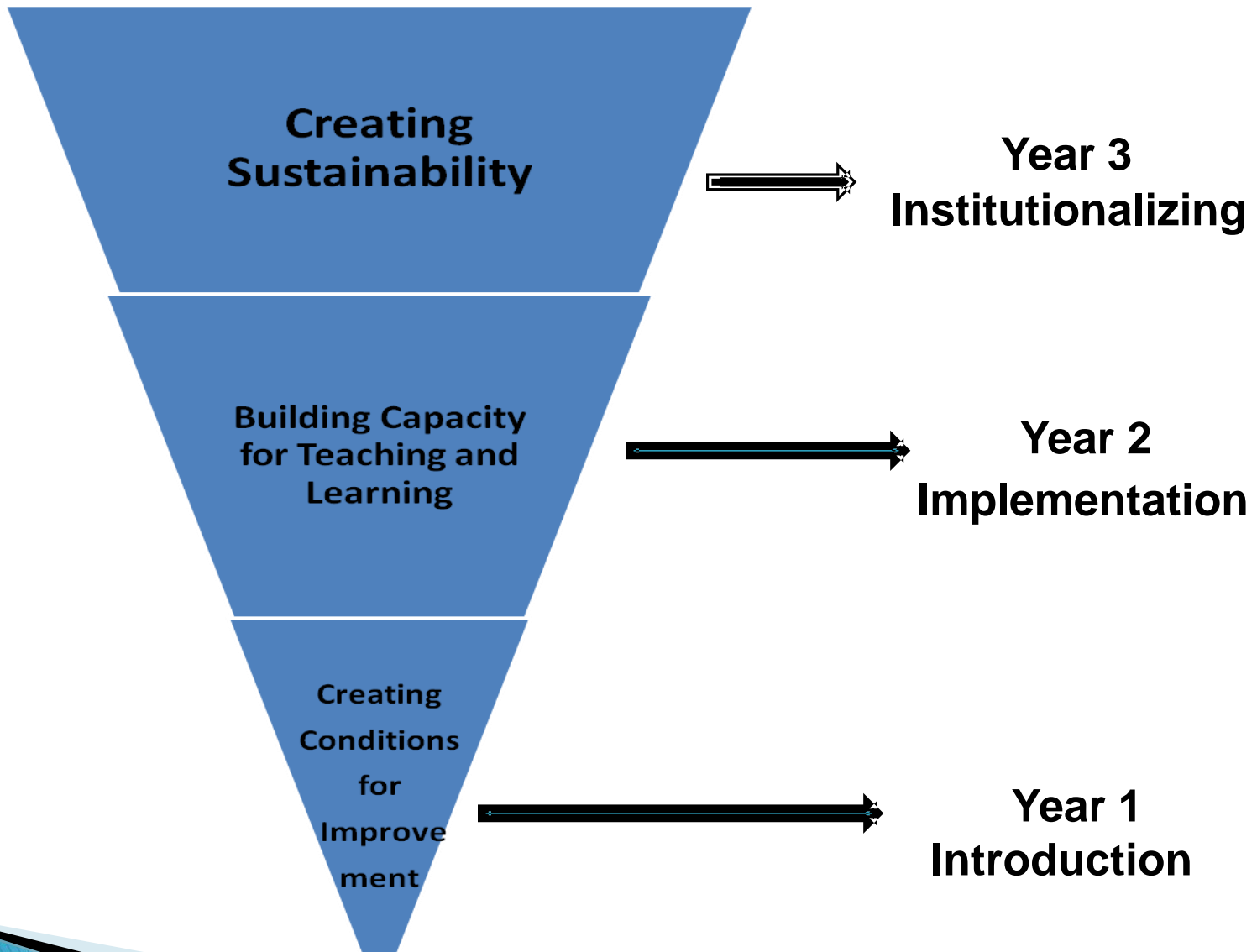
- ▶ 91 Parents/Families Served

- ✓ Job Placement
- ✓ GED and Study Skills
- ✓ Housing Assistance

- ▶ 31 Staff Trained and Developed

- ✓ Sensitivity training
- ✓ Big Brother/Big Sister
- ✓ Other Services Offered (Parent Support and opportunities)

Next Steps



“Saint Louis Public
SIG Schools are a
model for the
State...”

– Dennis Dorsey, DESE