



Attendance Update

Presented by:

Cheryl VanNoy, Executive Director, Information Technology

St. Louis Public Schools

October 11, 2011



Overview

- ▶ Update on historical and current enrollment
- ▶ Update on historical and current attendance
- ▶ Share proactive procedures related to both
- ▶ Discuss the preparation for meeting the attendance standard

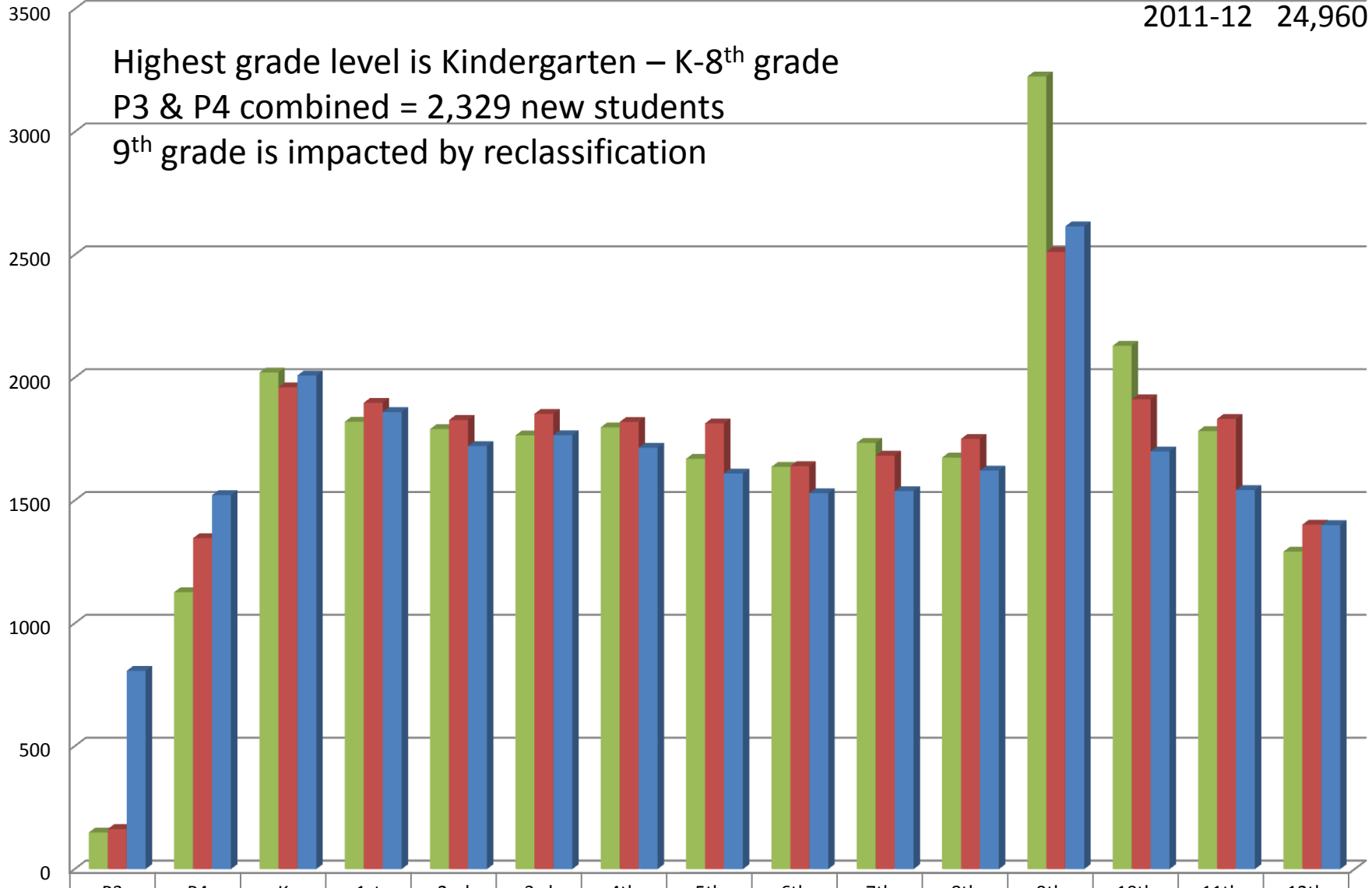
Enrollment by Grade Level

2009-10 25,620
2010-11 25,416
2011-12 24,960

Highest grade level is Kindergarten – K-8th grade

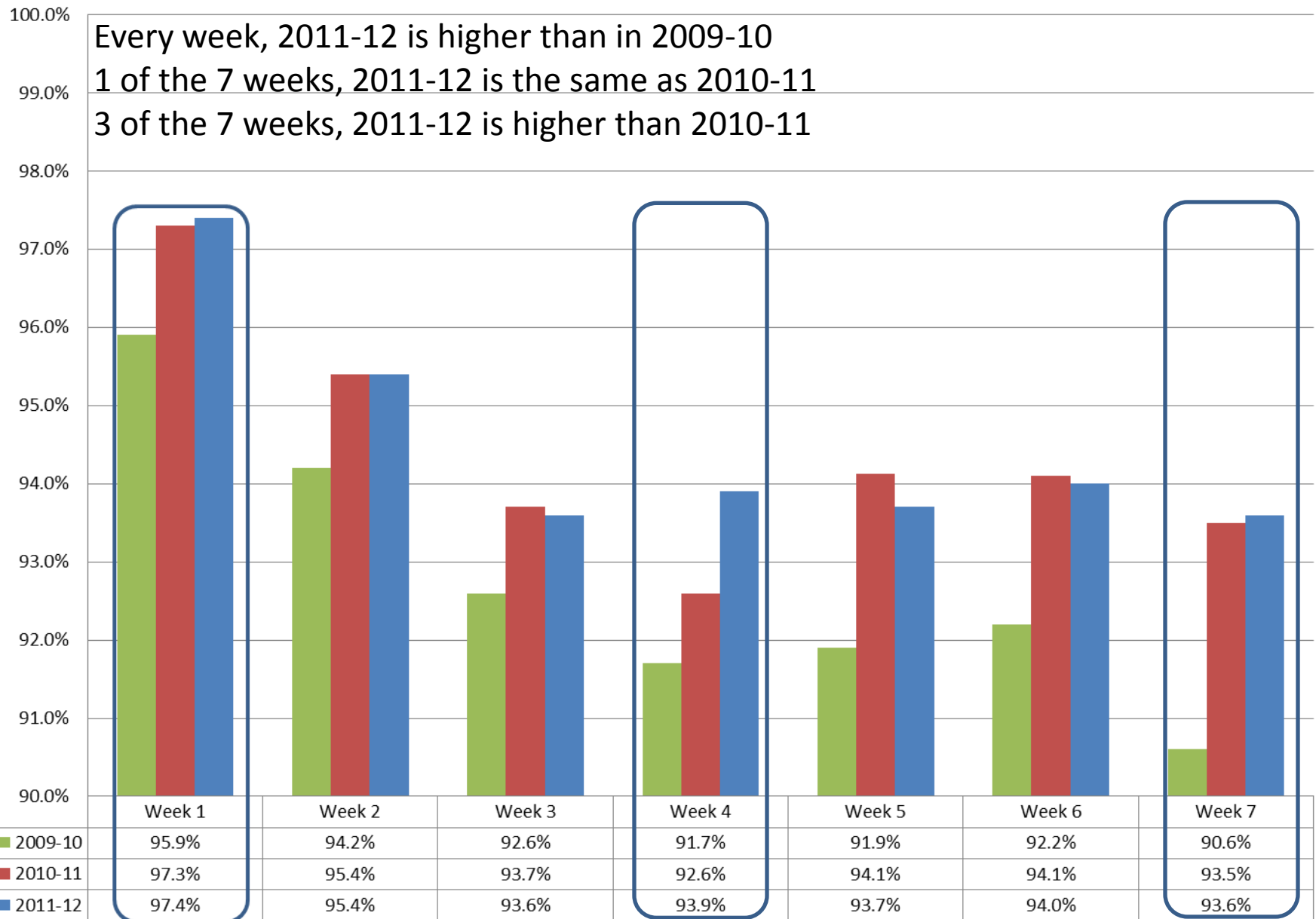
P3 & P4 combined = 2,329 new students

9th grade is impacted by reclassification

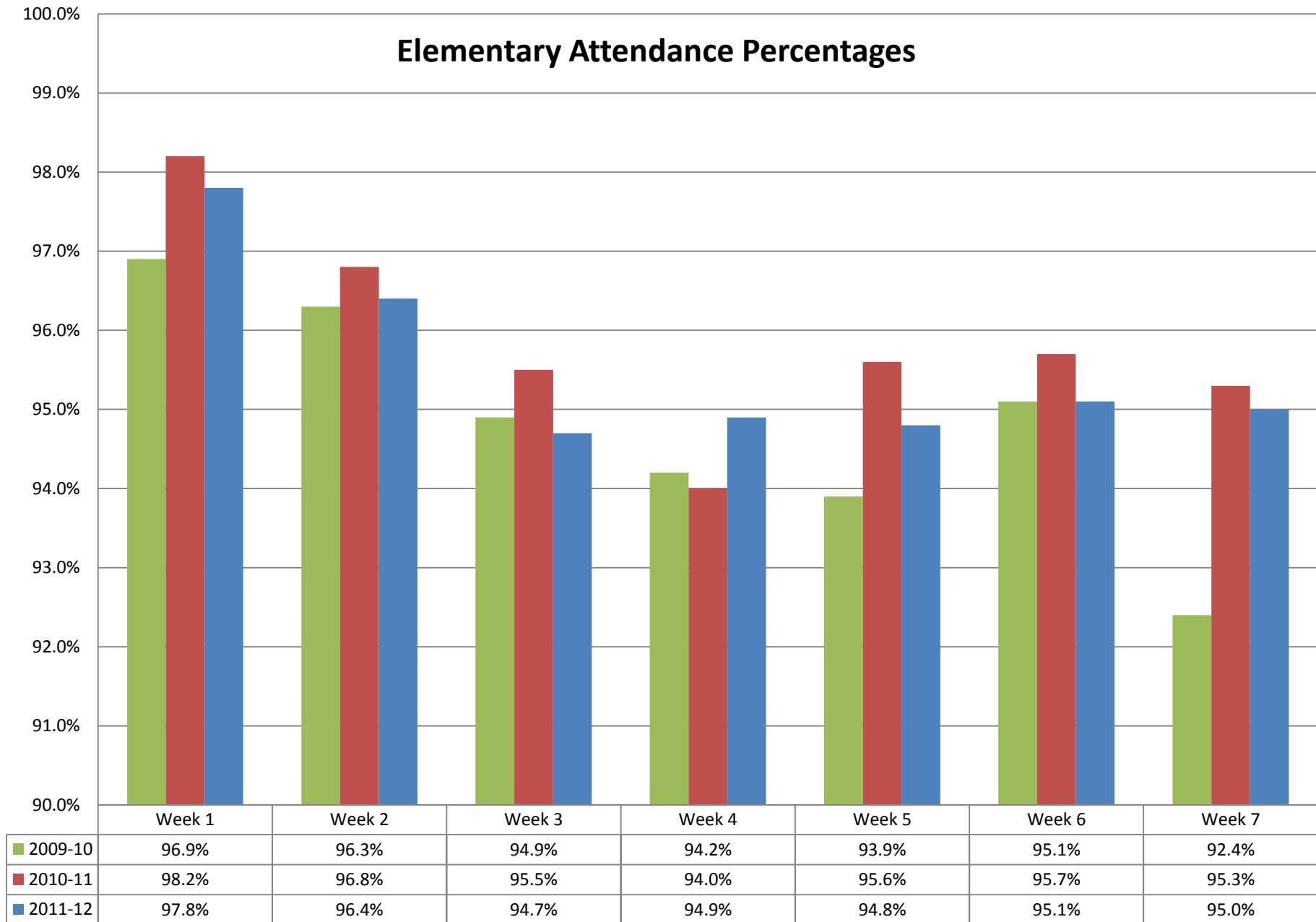


■ 2009-10	P3	P4	K	1st	2nd	3rd	4th	5th	6th	7th	8th	9th	10th	11th	12th
	149	1127	2021	1821	1791	1765	1798	1670	1637	1735	1675	3226	2130	1783	1292
■ 2010-11	163	1347	1961	1898	1828	1853	1820	1814	1640	1683	1751	2512	1912	1832	1402
■ 2011-12	807	1522	2009	1860	1722	1766	1715	1610	1530	1538	1622	2616	1700	1543	1400

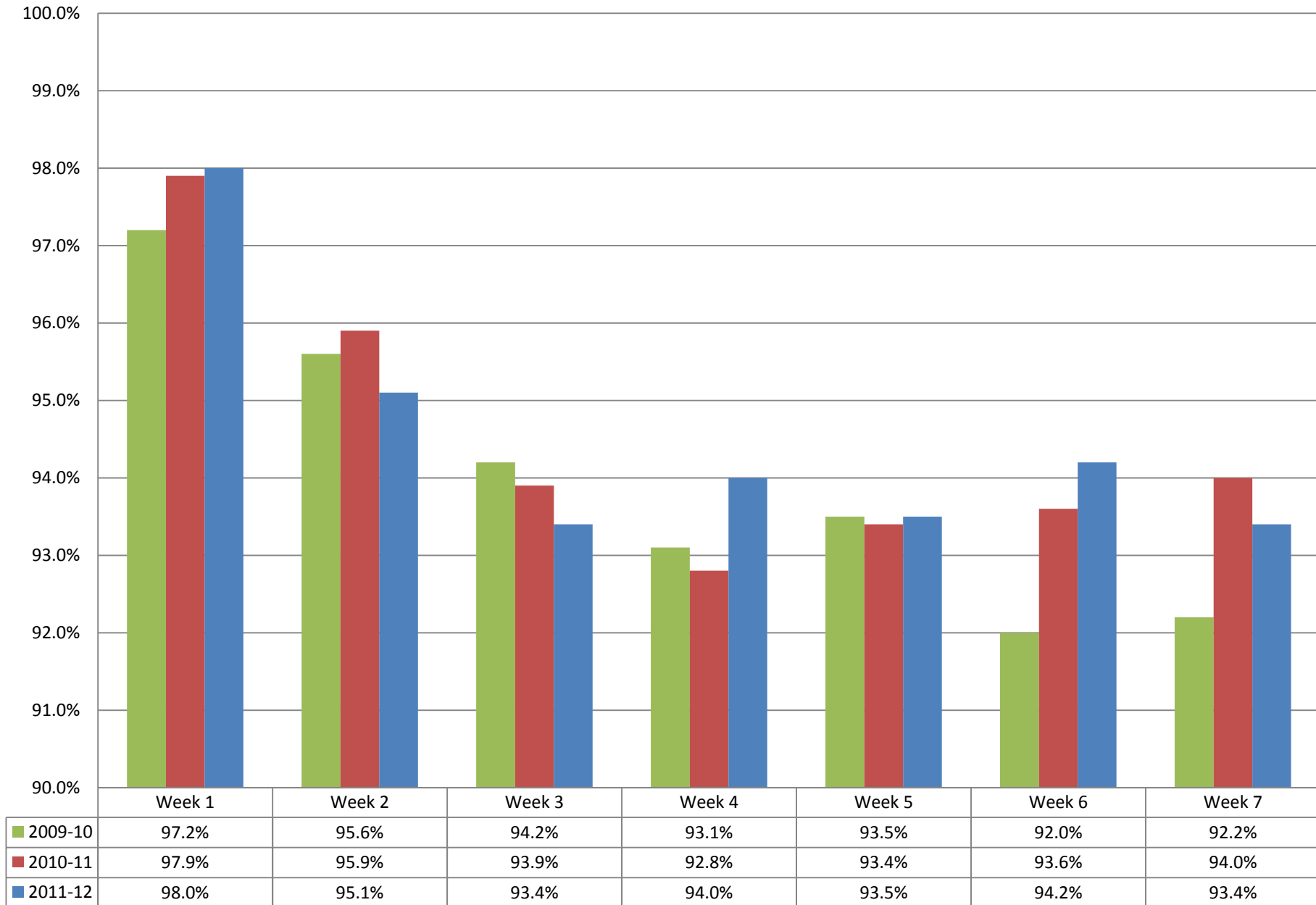
Attendance 1st 7 weeks of school



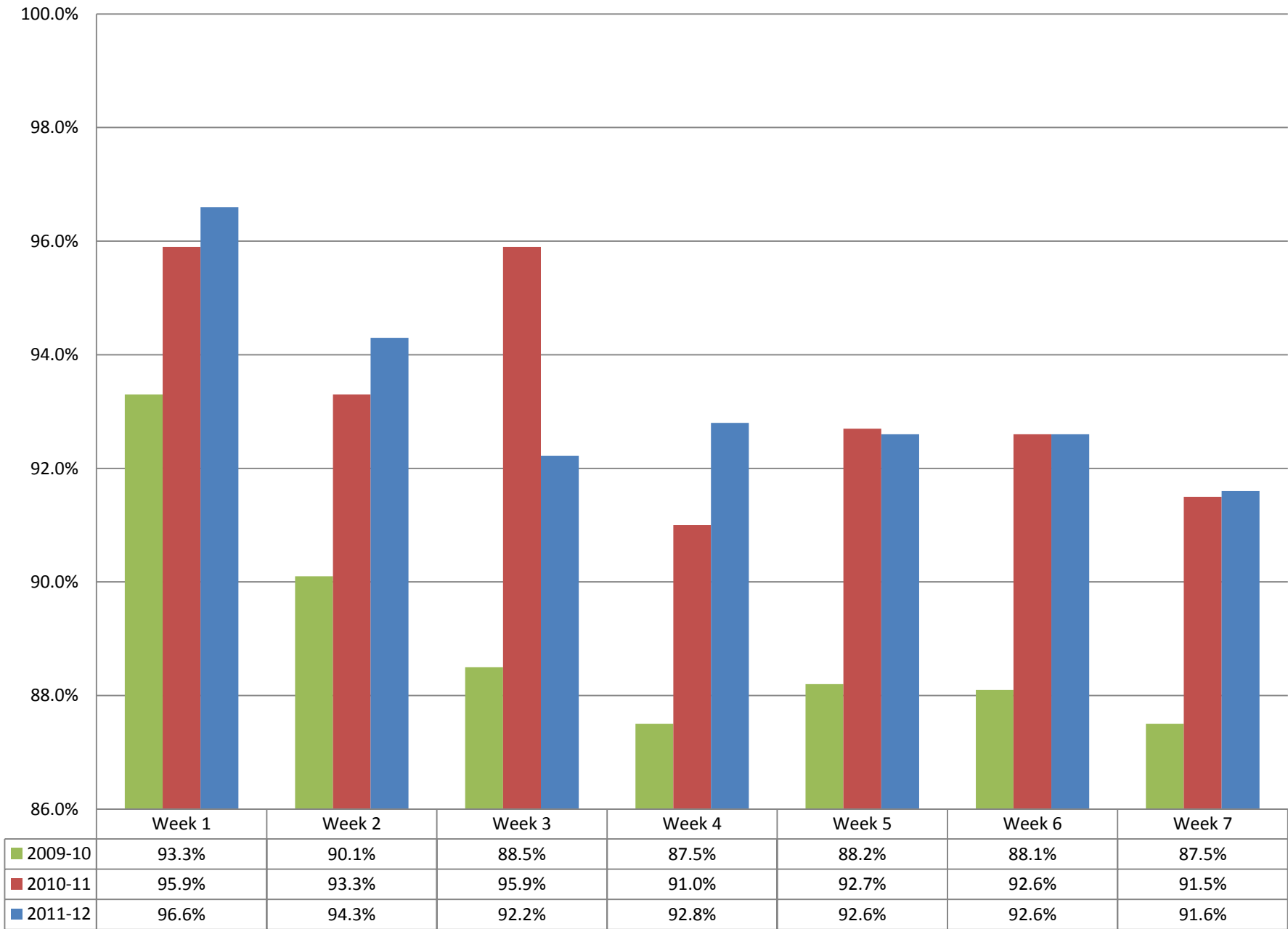
Elementary Attendance Percentages



Middle School Percentages



High School Percentages





Plan to Improve Student Attendance Data Management and Monitoring

Recommendations

► Communication of “No Errors” Attendance Initiative

Distribution of Updated District Attendance Policy

Distribution of Data Input and Usage Policy

Distribution of Guidelines/Current Attendance Process/Procedures

► Establish Monitoring Processes and Control Intervals

Implementation of Periodic Data Reviews and Check Points

Daily Reviews of District/School Level Attendance Data

Site Visits (Process Follow Through/DESE Format)

Quarterly Student Level Attendance Data Reviews

Daily Monitoring of “Red Flags” and Early Warning Problem Indicators

Periodic Data Archiving to Preserve Snapshots or “Point in Time” Data

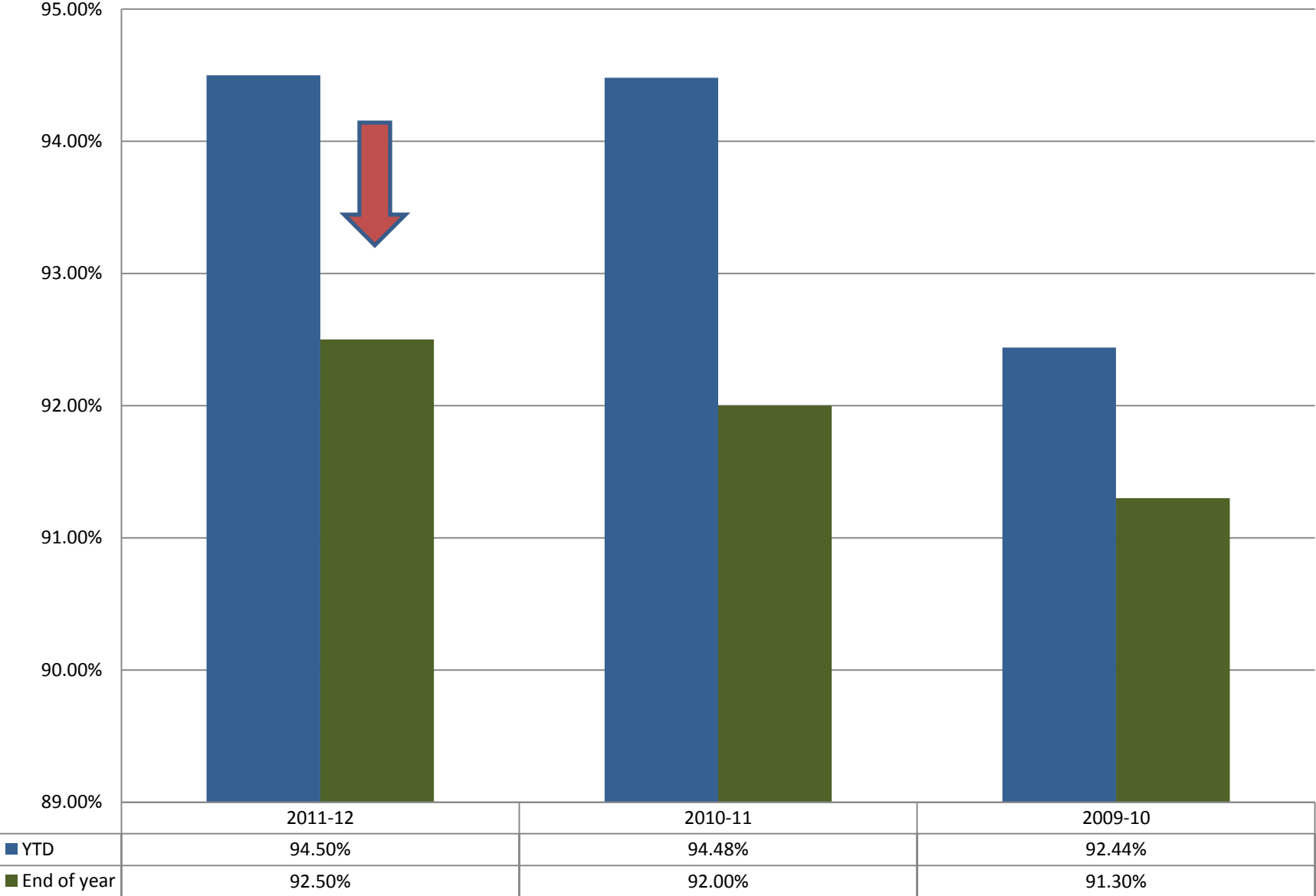
Audit Trails and Change Management Process

► Update Professional Development Plan

Open Lab Training Sessions

Distribution of User Documentation

Attendance through September 30th, each year





Summation

- ▶ SLPS is being proactive in data reporting and record keeping
- ▶ We are on the right track to meet the .5% increase for 2011–12
- ▶ We are working on verifying all attendance for the past 5 years