



Register Here!

Saharita Professional Learning Institute



25-26 PROFESSIONAL LEARNING CATALOG



SAHUARITA UNIFIED SCHOOL DISTRICT



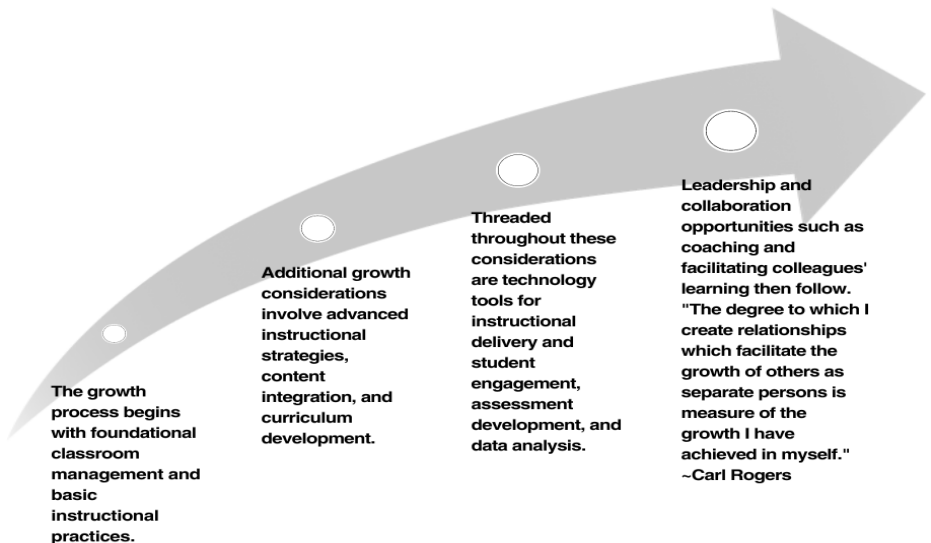
Professional Learning Framework

The goal of the Sahuarita Professional Learning Institute is to provide a framework for continual professional growth and renewal. It is believed that excellence in teaching is a process requiring ongoing maintenance.

**The engine, no matter how much horsepower it has,
needs regular tune-ups.**

It is also believed that when teachers make their own decisions through reflection and collaboration with colleagues and supervisors, they can make their professional learning most meaningful and effective.

Therefore, please peruse this year's in-services, most of which will be offered in successive years, and make your own professional growth plans for your career in SUSD.



Mary Jo Boyter, SUSD Director of Professional Development and Curriculum
Ext. 1051 mboyter@sahuarita.net

Ryan Carle-Ogren, SUSD Director of Professional Development and Curriculum
Ext. 1440 rcarle@sahuarita.net

TABLE OF CONTENTS

Summer Learning Courses.....	p.5-6
Summer Online Book Studies.....	p.7
Instructional Courses.....	p.8-10
Student Support Courses.....	p.11-14
Content Specific Courses.....	p.15-17
Staff Support & Leadership Courses.....	p.18-21
Online Book Studies.....	p.22-24
One Stop Shop PDs.....	p.24
New Teacher Induction.....	p.25-26
Curriculum Days.....	p.27
SUSD TECH Courses.....	p.28-29
Classified Staff Courses.....	p.30-35
Crisis Prevention & Intervention (CPI).....	p.36

Sahuarita Professional Learning Institute Mission Statement

SPLI will support the SUSD Educator Community through professional development that is innovative, collaborative, differentiated, and embedded in instructional practice.

ADMINISTRATIVE TEAM

Superintendent:
Dr. Manuel Valenzuela

Assistant Superintendent of Educational Services:
Mrs. Darlene Robinson

Assistant Superintendent of Administrative Services:
Mr. Scott Downs

Chief Financial Officer:
Mrs. Lizette Huie

Chief Communications Officer:
Mrs. Amber Woods

Chief Information Officer:
Mr. Manny Villa

GOVERNING BOARD MEMBERS

Denise Reis, President

Dr. John Sparks, Clerk

Anthony Bruno, Member

Raul Rodriguez, Member

Amy Petersmarck, Member

SUSD MISSION STATEMENT

Working as a team to help every student succeed.

March 07, 2025

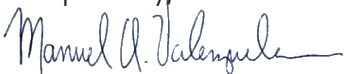
Dear Colleagues:

Of the numerous variables that impact student academic learning and growth, it is the professional skills and actions of the instructional staff that have the greatest effect size among variables that are within our control as a school organization. In that spirit, I have a strong and passionate commitment to quality professional development. Our District is committed to providing our faculty and staff with opportunities for professional growth experiences that are valid and meaningful, along the entire continuum of their professional careers.

This catalog is designed for each of you to consider your professional growth needs and consider making selections regarding workshop participation for 2025-26. Some areas of focus this year include active participation through cooperative learning, renewed focus on the Principles of Learning in New Teacher Induction, and advancement of staff well-being for student success. We'll also be featuring leadership development training and support. We will continue strong focus upon District curriculum initiatives and effective professional practice including, of course, New Teacher Induction. Additionally, we will continue to focus on the fundamentals of effective instruction, the reading and math frameworks, and sound instructional planning. It is our ongoing pursuit to provide challenging, meaningful, and authentic professional growth experiences that are congruent with effective practices and aligned with major district initiatives.

I would like to personally thank you for taking time to review this brochure and consider which program offerings might best meet your needs. Together, we will make progress in our never-ending quest for continuous improvement and exemplary service to our students.

Respectfully,



Manuel O. Valenzuela, Ed.D.
Superintendent



Sahuarita Unified School District #30
350 W. Sahuarita Rd, Building 10
Sahuarita, AZ 85629
Ph:(520) 625-3502 x1000

SUMMER LEARNING

☐ Active Participation 6-12

Facilitators: Ana Parra, Rusty Carle-Ogren

One day: Thu, July 17, 2025 OR Fri, January 23, 2026, 8:15am-2:15pm, SPLI PD Center

Based on the framework of Kagan Cooperative Learning structures and Himmele's Total Participation Techniques, participants will learn active participation strategies to increase student engagement, learning, and achievement.

☐ AI-Powered Pedagogy: Leading the Future of Education

Facilitators: Carl Nelson, Alya Verdugo

One day: Thu, May 29, 2025 OR Mon, December 8, 2025, 8:15am-2:15pm, SPLI PD Center

Experienced educators, revered for their expertise and dedication to fostering student success, are being called upon to embrace the transformative potential of artificial intelligence (AI) within the classroom. This one-day professional development seminar is meticulously designed to equip educators with the tools and insights needed to seamlessly integrate AI into their instructional practices. This exclusive opportunity promises to not only enhance teaching effectiveness but also personalize instruction, preparing students for the demands of a technology-driven society. Note: The course name and description were AI generated.

☐ American Heart Association CPR & First Aid Training

***This is a self-pay training and is for staff that need or want CPR certification. Cost: \$65.00*

Facilitators: Rapid Response Trainers, Amy & Don Fiske

One day: Wed, May 28, 2025, Wed, July 16, 2025, Fri, October 17, 2025, OR Fri, January 9, 2026, 8:15am-2:15pm, SPLI PD Center

Get certified in life-saving skills with our American Heart Association CPR and First Aid Training. Learn the essential techniques to respond effectively in emergencies and make a difference when it matters most.

☐ Brain Tools for School

Facilitators: Rebecca Oravec, Stephanie Cook

One day: Tue, July 22, 2025 OR Thu, March 5, 2026, 8:15am-2:15pm, SPLI PD Center

Learn about Dr. Bruce Perry's Neurosequential Model - How the brain develops and processes in a sequential order. This PD will break down the different functions of the 4 main parts of the brain, what developmental delays in these areas can mean for students, and many strategies for regulating the brain to help students find more success in the classroom (and life). Many resources will be shared and we will end with time to create or adapt materials for your own setting - classroom or office.

SUMMER LEARNING

☐ Control the Chaos: Classroom Culture and Management

Facilitators: Beth Dahl, Alex Fry

One day: Wed, June 4, 2025 OR Fri, November 21, 2025, 8:15am-2:15pm, SPLI PD Center

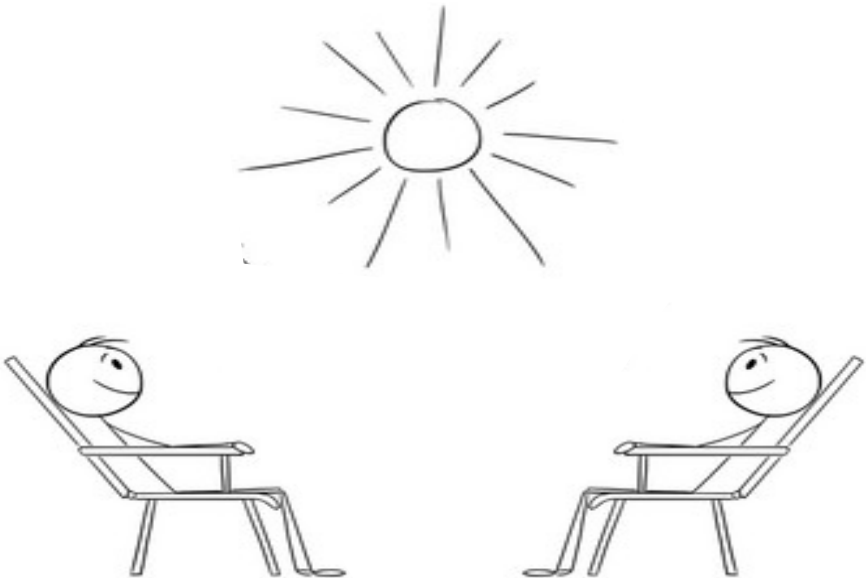
Using research-based classroom management programs by Time to Teach, Harry Wong, and Fred Jones, this course will help you “set up for success” in your classroom. Some of the topics that we will touch on are: 1. Classroom Set-up 2. Teaching expectations and procedures to a whole class environment 3. Building Rapport with Students 4. Behavior management plans for a whole class 5. Help! My Desk is a Mess! Ways to Organize.

☐ Let's Organize Your Google Drive!

Facilitators: Jan Bryson, Ryan Carle-Ogren

One day: Mon, June 2, 2025 OR Wed, December 3, 2025, 8:15am-1:15pm, SPLI PD Center

Is your Google Drive a mess? Do you get frustrated when you can't find the file you need? Did your drive become an abyss over the past few years? Do you need some time set aside to just simply get a handle on your electronic files? Come and learn the ins and outs of how to organize your Google Drive (and even your entire digital life)!



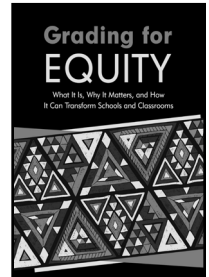
SUMMER ONLINE BOOK STUDIES

☐ Grading for Equity: What It Is, Why It Matters, and How It Can Transform Schools and Classrooms

Facilitator: Alexa Rodriguez

Online PLC: Starting Mon, June 2, 2025 (Weekly reading and discussion posting)

Together we will explore *Grading for Equity*, a thought-provoking examination of grading practices in schools and how they can be restructured to promote fairness and equity in the gradebook and beyond. Feldman offers a framework for examining grading practices and describes practical examples for creating grading systems that more accurately reflect students' learning and growth. The study will encourage participants to reflect on their own grading practices and consider how to implement changes that ensure all students are given equal opportunities to succeed. Participants will walk away with a deeper understanding of how equitable grading can transform educational outcomes and empower students, as well as the confidence and skills to create a grading policy that can be used on day one of the next school year!

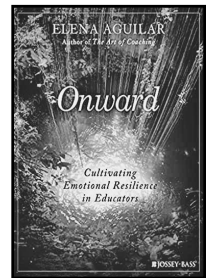


☐ Onward: Cultivating Emotional Resilience in Educators

Facilitator: Beth Pendolino

Online PLC: Starting Mon, July 14, 2025 (Monthly reading and discussion posting)

Onward tackles the problem of educator stress, and provides a practical framework for taking the burnout out of teaching. Stress is part of the job, but when 70 percent of teachers quit within their first five years because the stress is making them physically and mentally ill, things have gone too far. This book offers a path to resilience that helps teachers weather the storms and bounce back - and work toward banishing the rain for good.



INSTRUCTIONAL COURSES

☐ Active Participation 6-12

Facilitators: Ana Parra, Rusty Carle-Ogren

One day: Thu, July 17, 2025 OR Fri, January 23, 2026, 8:15am-2:15pm, SPLI PD Center

Based on the framework of Kagan Cooperative Learning structures and Himmele's Total Participation Techniques, participants will learn active participation strategies to increase student engagement, learning, and achievement.

☐ AI-Powered Pedagogy: Leading the Future of Education

Facilitators: Carl Nelson, Alya Verdugo

One day: Thu, May 29, 2025 OR Mon, December 8, 2025, 8:15am-2:15pm, SPLI PD Center

Experienced educators, revered for their expertise and dedication to fostering student success, are being called upon to embrace the transformative potential of artificial intelligence (AI) within the classroom. This one-day professional development seminar is meticulously designed to equip educators with the tools and insights needed to seamlessly integrate AI into their instructional practices. This exclusive opportunity promises to not only enhance teaching effectiveness but also personalize instruction, preparing students for the demands of a technology-driven society. Note: The course name and description were AI generated.

☐ Control the Chaos: Classroom Culture and Management

Facilitators: Beth Dahl, Alex Fry

One day: Wed, June 4, 2025 OR Fri, November 21, 2025, 8:15am-2:15pm, SPLI PD Center

Using research-based classroom management programs by Time to Teach, Harry Wong, and Fred Jones, this course will help you "set up for success" in your classroom. Some of the topics that we will touch on are: 1. Classroom Set-up 2. Teaching expectations and procedures to a whole class environment 3. Building Rapport with Students 4. Behavior management plans for a whole class 5. Help! My Desk is a Mess! Ways to Organize.

☐ Engage. Enlighten. Excel. 6-12

Facilitators: Derek Kieninger, Justine Saavedra

One day: Tue, December 2, 2025, 8:15am-2:15pm, SPLI PD Center



This course focuses on enhancing skills in facilitating debates and fostering meaningful discourse among students. Participants will learn effective strategies to engage students in critical thinking, promote respectful dialogue, and create an inclusive environment that encourages diverse perspectives. By the end of the course, educators will be equipped with practical tools to implement dynamic discussions that enhance student learning and communication skills.

INSTRUCTIONAL COURSES

☐ Gifted Cluster Model K-8

For new teachers to the designated grade level, elementary gifted cluster classroom, and select middle school honors teachers

Facilitator: TBD

One day: Wed, September 17, 2025, 8:15am-1:15pm, SPLI PD Center

This will help teachers identify the characteristics and behaviors of a gifted student, the process for placement, strategies for instructional delivery, and differentiation for gifted learners.

☐ Inquiry-Based Learning 6-12

Facilitators: Samantha Gilbert, Alya Verdugo

One day: Mon, November 17, 2025, 8:15am-2:15pm, SPLI PD Center

Looking to amplify student involvement and bring WONDER to your classroom? Do you believe that the students should be thinking and working harder than the teacher in any given class? This PD will explore how to best incorporate inquiry-based approaches... regardless of content-area. The course will include topics such as how to develop an inquiry mindset (in educators AND in students), effective questioning techniques (and how to get students creating the questions), different types of inquiry activities (and how they can be used in the classroom), and how to set your classroom and students up for success (in regards to inquiry). This PD was developed based on the POGIL (Process-Oriented Guided Inquiry Learning) model and the work of Trevor Mackenzie (author of "Inquiry Mindset" and "Diving into Inquiry").

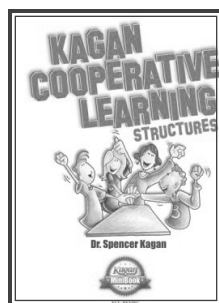
☐ Kagan: Cooperative Learning Day 1 & 2

Facilitator: Kagan Trainer

Two days: Thu, November 13, 2025 AND Fri, November 14, 2025, 8:00am-3:30pm, Wrightson Ridge School Library

Kagan is coming to SUSU! In this workshop, experience cutting-edge teaching structures to create classroom success now and forever! Learn management tips, how to form effective teams, strategies for creating a cooperative class through teambuilding and classbuilding, and why cooperative learning produces gains when group work often fails.

Please email Mary Jo Boyter if you are interested in attending.



INSTRUCTIONAL COURSES

☐ Meeting Every Student Where They Are: Differentiated Instruction Essentials

Facilitators: Tiffany Flores, Laura Hatfield

One day: Tue, December 9, 2025, 8:15am-2:15pm, SPLI PD Center

Learn strategies to maximize the learning of all students. This PD will include information about students' readiness level, interests, and learning needs; how to differentiate content, process, and product; evaluating and grading differentiated products; and how to prepare the students and classroom for differentiated instruction.

☐ Specially Designed Instruction and How I Can Make It Individualized

Facilitator: Amy Bradeson-Etheridge

One day: Wed, December 3, 2025, 8:15am-1:15pm, SPLI PD Center

The professional development on Specially Designed Instruction (SDI) offers educators concise, practical strategies to cater to the diverse learning needs of students. Through focused sessions, participants learn to tailor instruction, utilize assistive technologies, and collaborate effectively to ensure all students receive the support necessary for academic success.

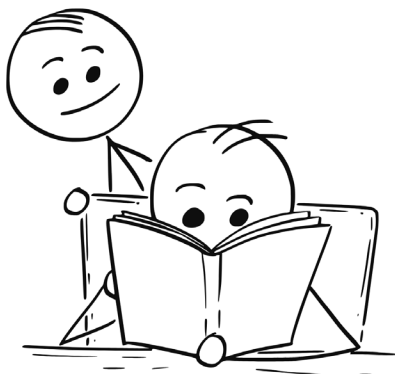
☐ Removing Barriers, Elevating Success: UDL in the Classroom

Facilitator: Jenifer Fernandez, ADE Universal Design and Inclusive Instruction Professional Learning Specialist

One day: Tue, October 21, 2025, 8:15am-2:15pm, SPLI PD Center



How can we support the diverse needs of all students? This session will equip teachers with simple, powerful, and practical strategies to implement Universal Design for Learning (UDL) within a Multi-Tiered System of Supports (MTSS). Through real-world examples, learn how to design lessons that engage every learner, proactively reduce barriers, and seamlessly integrate supports into instruction. Participants will leave with ready-to-use tools and strategies to create a more inclusive, flexible, and effective classroom where all students can succeed!



STUDENT SUPPORTS

☐ Autism

Facilitators: Laura Hatfield, Candace Provencio

One day: Mon, March 2, 2026, 8:15am-2:15pm, SPLI PD Center

Participants will explore autism spectrum disorders which will include: theories regarding spectrum disorders, experiential activities to better understand what our students might be experiencing, and interventions and strategies to better serve our students.

☐ Brain Tools for School

Facilitators: Rebecca Oravec, Stephanie Cook

One day: Tue, July 22, 2025 OR Thu, March 5, 2026, 8:15am-2:15pm, SPLI PD Center

Learn about Dr. Bruce Perry's Neurosequential Model - how the brain develops and processes in a sequential order. This PD will break down the different functions of the 4 main parts of the brain, what developmental delays in these areas can mean for students, and many strategies for regulating the brain to help students find more success in the classroom (and life). Many resources will be shared and we will end with time to create or adapt materials for your own setting - classroom or office.

☐ Bridging Abilities: SPED Integration in 6-12 Gen Ed

Facilitators: Jayme Frazier, Laura Hatfield

One day: Fri, November 7, 2025, 8:15am-2:15pm, SPLI PD Center

Participants will acquire practical support strategies to address the sensory, behavioral, and academic needs of Special Education Students. You will learn how to read and understand your responsibilities of the IEP and quick and easy ways to implement IEP accommodations and modify student work.

☐ Building Relationships: Student-Centered Behavior Intervention 6-12

Facilitators: David Hansbrough, Sarah Voorhees

One day: Mon, November 24, 2025, 8:15am-2:15pm, SPLI PD Center

This session is an informative introduction to a positive and student centered approach to school-wide behavior expectations, classroom management structures, and individual student interventions. Student centered intervention is a more inclusive approach that prioritizes relationship building and logical consequences over punitive practices in addressing unwanted student behavior. This course will cover improving school culture, building a positive classroom climate, and working with individual students to increase positive behaviors.

STUDENT SUPPORTS

☐ Changing Mindsets, Changing Lives

Facilitator: Matthew Kreamer

One day: Tue, November 18, 2025, 8:15am-2:15pm, SPLI PD Center

Ever wondered about the one piece our students need to be successful in your class? Together we will discover the power of changing a student's mindset. We will discuss growth vs fixed mindset and the power of proper praise. Then we will delve into grit, how to prepare your mind for success, and conclude with motivation. Come discover how to change your student's mindset to prepare them for success.

☐ Crisis Prevention Intervention: De-escalation Strategies for Teachers

Facilitators: Stephanie Cook, Candace Provencio

One day: Mon, November 10, 2025, 8:15am-2:15pm, SPLI PD Center

Crisis Prevention and Intervention: De-Escalation Basics training aims to empower participants with the knowledge, skills, and confidence to effectively manage crises, promote safety, and support the well-being of students in distress. Participants will learn how to identify different levels of a crisis, and the staff's approach to help diffuse the situation. By fostering a proactive and compassionate approach to crisis intervention, participants can create a culture of safety and care within the classroom.

☐ Next-Gen Teaching: Unleashing Potential in Gen Z and Gen Alpha

Facilitators: Lisa De La Ossa, Derek Garcia, Rita Hardy

One day: Mon, November 3, 2025, 8:15am-2:15pm, SPLI PD Center

This course explores innovative teaching methods and strategies tailored to engage and empower the next generations of learners, Gen Z and Gen Alpha. Through case studies, interactive discussions, and hands-on activities, educators will develop practical approaches to adapt curriculum, integrate technology, and foster creativity and critical thinking. Join us to unlock the full potential of teaching in the digital age and inspire the future leaders of tomorrow.

☐ Restorative Harmony: Restorative Interventions and Conscious Discipline

Facilitators: David Hansbrough, Ocean Attebery

One day: Fri, January 30, 2026, 8:15am-2:15pm, SPLI PD Center

Participants will learn evidence-based strategies to cultivate a positive and inclusive school culture, foster healthy relationships, and proactively address conflicts and behavioral challenges. Our training equips educators with practical tools and techniques to promote social-emotional learning, build empathy, and restore harmony in the classroom and school community. Join us to deepen your understanding and implementation of restorative practices and conscious discipline, creating a nurturing environment where all students can thrive emotionally, socially, and academically.

STUDENT SUPPORTS

☐ Social and Emotional Learning K-12

Facilitators: Ocean Attebery, Cayenne Towne

One day: Mon, November 10, 2025, 8:15am-2:15pm, SPLI PD Center



Participants will learn strategies they can implement in middle and high school environments to assist students in acquiring and applying the knowledge and skills necessary to develop healthy identities, regulate their emotions, experience and demonstrate empathy for others, achieve goals, establish and maintain healthy relationships and engage in responsible decision-making.

☐ SPED Support in the General Ed Classroom K-5

Facilitators: Jan Bryson, Ashley Thomas

One day: Tue, September 30, 2025, 8:15am-2:15pm, SPLI PD Center

Participants will acquire practical support strategies to address the sensory, behavioral, and academic needs of Special Education students. They will learn quick and easy ways to implement accommodations, ideas to modify student work, review and learn new teaching strategies, and gain common sense strategies to understand and add.

☐ Strategies For English Language Learners in the Classroom K-12

Facilitator: Jan Spooner

One day: Tue, November 25, 2025, 8:15am-2:15pm, SPLI PD Center

Learn how to support, engage, and instruct English language learners in your classroom. We will review English Language Proficiency standards and learn how to use them to differentiate instruction for our EL students to support language development, and we will learn instructional strategies that will engage students with limited English language proficiency. Participants will have time to collaborate and plan.

☐ Student Engagement Strategies That Promote Positive Behavior K-5

Facilitators: Beth Dahl, TBD

One day: Mon, October 20, 2025, 8:15am-2:15pm, SPLI PD Center

Are you looking for ways to engage your students and amplify your teaching through active participation? Would you like strategies that you can implement in your classroom the very next day? Then this PD is for you! Active participation creates an environment in which students engage in their learning and supports positive behavior and rapport in your classroom. Please join us in a fun and active day that centers around promoting student engagement.

STUDENT SUPPORTS

☐ Supporting Student Diversity: Engaging Empathy and Inclusivity for the Campus and Classroom

Facilitators: Ben Lebovitz, TBD

One day: Tue, March 3, 2026, 8:15am-2:15pm, SPLI PD Center



Participants will deepen their understanding of student identity, prioritizing inclusivity for LGBTQ+ individuals, those affected by economic challenges, and students from diverse cultural backgrounds. This session is identified for educators, counselors, and school leaders at any grade level, equipping them to recognize and address implicit biases and stereotypes to deepen their empathy and understanding of students' experiences in the classroom and across the school campus. Through the exploration of inclusive curricula, classroom materials, case study analyses, and effective teaching strategies, participants will be empowered to support both the socio-emotional and academic growth of all students.

☐ Youth Mental Health First Aid K-12

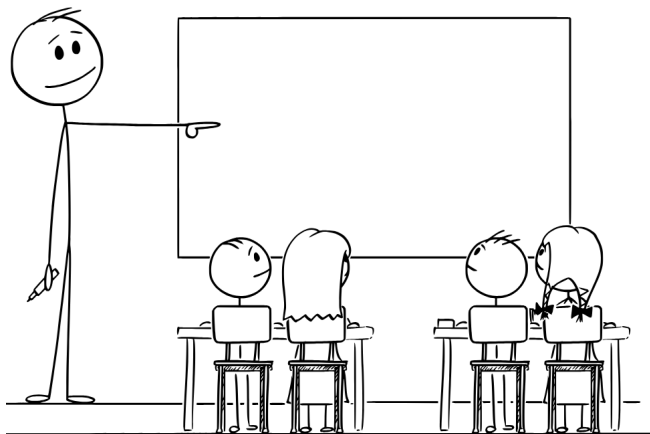
Who should take it? Teachers, school staff, or anyone that works with youth gr. K-12.

Facilitators: Kelley Coronado, Director of Youth Wellness and Kari Stewart, Program Manager

One day: Wed, October 29, 2025, 7:45am-1:15pm, SPLI PD Center



Youth Mental Health First Aid USA is designed for individuals who regularly interact with youth; teachers, school staff, coaches, parents, etc. Participants are introduced to the unique risk factors and warning signs of mental health problems in adolescents, understand the importance of early intervention, and learn how to assess and help an adolescent in crisis or experiencing a mental health challenge. This PD is a hybrid course, with required online work prior to the in-person session.



CONTENT SPECIFIC

☐ Cultivating Mathematical Minds: Practical Approaches for Building Thinking Classrooms

Facilitators: Melissa McRae, Elaine Saunders

One day: Thu, November 20, 2025, 8:15am-2:15pm, SPLI PD Center



In this PD participants will get an overview of Building Thinking Classrooms and look at ways we can easily integrate the tenets of BTC into our already established curriculums for grades 6-12. We will focus on ways to implement BTC as one of many available strategies that support learners, and examine which types of tasks are ready to implement using this method. You can also sign up for the Building Thinking Classrooms in Mathematics Book Study that begins on September 15, 2025!

☐ Dyslexia K-12

Facilitators: Becky Hill, Jan Spooner

One day: Mon, September 29, 2025, 8:15am-2:15pm, SPLI PD Center

What is dyslexia? Over 60 years of research suggest that 10-20% of students have dyslexia, which impacts their ability to read and access the curriculum. Teachers will experience a dyslexia simulation, learn what dyslexia is and is not, how to identify signs of it, and how to support students who may have it. We will have time to collaborate on lesson design to incorporate strategies and accommodations to support our struggling readers.

☐ Empowering Excellence: Advancing Mathematics Instruction in Grades 3-5

Facilitators: Suqiong Fritz, Dianna Villa

One day: Thu, November 20, 2025, 8:15am-2:15pm, SPLI PD Center



Join us for a comprehensive professional development session designed to elevate mathematics instruction in grades 3-5. Through collaborative exploration and hands-on activities, participants will delve into best practices, pedagogical strategies, and curriculum alignment to foster deeper conceptual understanding and problem-solving skills among students. Gain practical tools, resources, and insights to enhance your instructional approach and empower student success in mathematics.

☐ Enhancing Elementary Mathematics: Strategies for Effective Small Group Instruction and Centers in Grades K-5

Facilitators: Meagan Kautz, Samantha Maldonado

One day: Mon, January 26, 2026, 8:15am-2:15pm, SPLI PD Center

Join us for a dynamic professional development session focused on optimizing K-5 math instruction through small group activities and centers. Explore research-based strategies tailored to diverse learners, delve into differentiated instruction techniques, and discover innovative ways to integrate technology into your math centers. Enhance your skills and leave empowered to create engaging and effective math experiences for all students.

CONTENT SPECIFIC

☐ Foundations of Mathematics: Elevating Instruction in Grades K-2

Facilitators: Brittany DeFazio, Meagan Kautz

One day: Tue, November 18, 2025, 8:15am-2:15pm, SPLI PD Center



Embark on a journey of discovery and growth in our professional development session tailored to grades K-2 math instruction. Delve into evidence-based practices, interactive workshops, and collaborative discussions aimed at strengthening foundational mathematical skills and concepts. Participants will gain valuable insights into differentiated instruction, formative assessment strategies, and incorporating hands-on activities to engage young learners effectively. Leave empowered with practical tools and innovative approaches to nurture mathematical proficiency and foster a love for learning in early elementary students.

☐ From Sounds to Reading - Essential Blending Skills for Early Readers, K-2

Facilitators: Jenn Vaterlaus, Michelle Verdugo

One day: Fri, October 17, 2025, 8:15am-2:15pm, SPLI PD Center



Do you have students struggling to read? Are your students stuck in the bad habit of sounding out every word? In this PD we will dive into the key components of phonemic awareness, the alphabetic principle, and blending techniques that form the foundation for reading success. Learn simple, effective routines you can start using in your classroom tomorrow to engage your students and enhance their reading skills. This PD is packed with practical strategies to help your students make lasting connections between sounds and letters—setting them up for a lifetime of literacy!

☐ Setting Up and Teaching Small Group Reading for All Students K-5

Facilitators: Carly Carrillo, Brittany DeFazio

One day: Fri, August 29, 2025, 8:15am-2:15pm, SPLI PD Center

This course will focus on the Science of Reading approach to literacy. Participants will learn about grade-level appropriate assessments, analyze data and use it to create instructional groups, and discuss the sequence of skills necessary for all students to become fluent readers. In addition, participants will evaluate materials for groups, learn how to set up a schedule to maximize instructional time for all students, and create a research-based routine to use in reading groups. To get the most out of this course, it is recommended that participants sign up with a grade-level colleague. You will receive the UFLI Foundations Book to support Tier 2 instruction.

☐ Teaching 3-5 with Essential Word-Attack Skills and Spelling Routines

Facilitators: Danielle Pack, Marcy Wagner

One day: Fri, November 7, 2025, 8:15am-2:15pm, SPLI PD Center



This course will focus on preparing teachers to implement advanced decoding and encoding strategies. Participants will use Phonics for Reading resources to have a clearer understanding of phonics instruction for intermediate encoding and decoding. They will also gain new strategies to support students during vocabulary instruction looking at prefixes, affixes and suffixes.

STAFF SUPPORT & LEADERSHIP

☐ 504 Coordinator Training

Facilitators: Leigh Burkey, Siomara Enriquez

One Day: Wed, August 13, 2025 OR Wed, January 7, 2026, 8:15am-1:15pm, SPLI PD Center

Participants will learn about the requirements and benefits of Section 504 of the Rehabilitation Act of 1973. This course will include an overview of potential medical/health conditions, how to develop and implement a 504 plan, discipline, and procedural safeguards. A brief comparison of Section 504 and an IEP will also be provided.

☐ American Heart Association CPR & First Aid Training

**This is a self-pay training and is for staff who need or want CPR certification. Cost: \$65.00*

Facilitators: Rapid Response Trainers, Amy & Don Fiske

One day: Wed, May 28, 2025, Wed, July 16, 2025, Fri, October 17, 2025, OR Fri, January 9, 2026, 8:15am-2:15pm, SPLI PD Center

Get certified in life-saving skills with our American Heart Association CPR and First Aid Training. Learn the essential techniques to respond effectively in emergencies and make a difference when it matters most.

☐ Community Share

Facilitator: Rebecca Oravec

Monthly Meetings: Starting Mon, August 18, 2025, 4:00pm-6:00pm, SPLI PD Center

Learn and grow with other teachers in this year-long fellowship centered around real-world project based learning and community engagement. Over the course of the fellowship, you will develop a classroom project with a community partner through the CommunityShare platform and meet with the fellowship group monthly to reflect on your teaching, student evidence of learning, and adopt a more inquiry-focused mindset for your classroom.

**Participation in monthly meetings is required for stipend and grant opportunities through SEEF.*

☐ CSTAG for New Team Members

Facilitators: Ocean Attebery, Leigh Burkey, Candace Provencio

One Day: Mon, September 29, 2025, 8:00am-4:00pm, SPLI PD Center

Participants will learn about the Comprehensive School Threat Assessment Guidelines (CSTAG), a structured, evidence-based approach to assessing and managing school threats. CSTAG is an early intervention, tiered decision-making process that is used in schools nationwide to promote a supportive and preventative school climate.

STAFF SUPPORT & LEADERSHIP

☐ Don't Be Reactive, Be Proactive: Behavior Planning

Facilitators: Siomara Enriquez, Candace Provencio

One Day: Wed, November 12, 2025, 8:15am-1:15pm, SPLI PD Center



Participants will learn the basics of behavior plans including how to create clear definitions of behavior, which will help with data collection. We will then discuss using the data to create a behavior plan. The course is recommended for MTSS Leads and IEP Case Managers.

☐ Empowerment through Education: SPED Law 101

Facilitator: Lisa Anne Smith

One Day: Wed, February 4, 2026, 8:15am-1:15pm, SPLI PD Center

This session will cover the two laws regarding educating students with disabilities: Section 504 of the Rehabilitation Act and the Individuals with Disabilities Education Act (IDEA). Every teacher, whether a general education teacher or a special education teacher, has obligations relating to finding students with disabilities, identifying what the student needs to receive a free appropriate public education (FAPE), implementing IEPs and 504 plans, and taking care to avoid discriminating against students with disabilities. There will be plenty of time for questions, so there will be something for every teacher to learn or to review.

☐ Instructional Coaching

**All new Instructional Coaches must have principal approval. Please contact MJ Boyter or Ryan Carle-Ogren for more information.*

Facilitators: Mary Jo Boyter, Ryan Carle-Ogren

Initial training - Three days: Thu, August 21; Thu, September 4; Tue, September 16, 2025, 8:00am-2:30pm, SPLI PD Center

Follow-up training - Two Days: Tue, December 9, 2025, 3:45pm-4:45pm, Virtual
AND Wed, January 28, 2026, 2:10pm-3:10pm
OR 3:15pm-4:15pm, SPLI PD Center

☐ Leading for All: UDL and MTSS in Action

Facilitator: Jenifer Fernandez, ADE Universal Design and Inclusive Instruction Professional Learning Specialist

One day: Thu, July 10, 2025, 8:30am-11:30am, SPLI PD Center

This session will empower school administrators with the knowledge and strategies to integrate Universal Design for Learning (UDL) within a Multi-Tiered System of Supports (MTSS) to build genuinely inclusive and effective learning environments. Discover, through real-world examples, how to break down barriers, support teacher implementation, and ensure all students get what they need to succeed! Walk away with practical leadership strategies to drive meaningful schoolwide change.

STAFF SUPPORT & LEADERSHIP

☐ Mentor Training

**All new Mentors must have principal approval. Please contact MJ Boyter or Ryan Carle-Ogren for more information.*

Facilitator: Ryan Carle-Ogren

One day: Tue, July 29, 2025, 8:30am-12:00pm, SMS Library

Quality mentoring can provide the support and guidance critical to an educator's success in his/her first year of teaching in the district. Mentors build and maintain relationships with their mentees based on mutual trust, respect, and professionalism. In this training, we will focus on the understanding of the importance of mentoring, methods for developing rapport, and understanding district expectations for Mentors. The training includes time to meet with the mentees and lunch.

☐ MET Driven IEP

Facilitators: Amy Bradeson-Etheridge, Jamie-Ann Miranda

One Day: Thu, August 14, 2025 OR Thu, January 8, 2026, 8:15am-2:15pm, SPLI PD Center

Participants will learn how to create a meaningful Individual Education Plan from a Special Education evaluation and other data points. This will include incorporating the evaluation data in the present levels and using the data to inform goals, services, accommodations, modifications, etcetera. This will also include handling difficult meetings and effectively documenting the team's decisions in the Prior Written Notice.

☐ National Board Pre-Candidacy Course

Facilitators: Ryan Carle-Ogren, Beth Dahl

Two Days: Fri, April 24, 2026 AND Fri, May 1, 2026, 8:15am-2:15pm, SPLI PD Center



Begin your journey to becoming a National Board Certified Teacher with a National Board Pre-Candidacy Class. This is also the first step to being eligible for funding from the Arizona K12 Center. As a pre-candidate, you'll gain a firm understanding of the process and be prepared to begin the candidate process toward becoming a National Board Certified Teacher. In a National Board Pre-Candidacy Class, you will explore the National Board Professional Teaching Standards and Five Core Propositions. You will also have a better understanding of the documents, materials, and components set forth by the National Board for Professional Teaching Standards.

☐ National Board Support Day

Facilitators: Beth Dahl

One Day: Tue, April 21, 2026, 8:15am-2:15pm, SPLI PD Center

This workday is open to registered National Board Candidates only. This time will be spent working with your coach on your registered National Board Components in preparation for submission.



STAFF SUPPORT & LEADERSHIP

☐ Navigating Success: Empowering Admin in SUSD

Facilitators: District Administrators

Four Days: Tue, August 26, 2025, Thu, October 23, 2025, Tue, January 13, 2026, AND Thu, March 26, 2026, 9:00am-12:00pm, SPLI PD Center



Over the course of four sessions, school administrators will be equipped with the tools and strategies needed to lead effectively within SUSD. Each session will focus on a different functional aspect based on the time of year, upcoming events and deadlines, and the needs of attendees. Participants will also have the opportunity to collaborate with each other during open forum time, with the ultimate goal of empowering leaders and fostering a supportive network.

☐ Prior Written Notice Training

Facilitators: Candace Provencio, Lorri Andrews

One Day: Tue, August 19, 2025, 7:30am-10:30am, SPLI PD Center

Learn and practice the ins and outs of writing a Prior Written Notice (PWN). We will cover when a PWN is expected and what should be included.

☐ SPLI Facilitator Training

**For newly approved facilitators. Please contact MJ Boyter or Ryan Carle-Ogren for more information.*

Facilitators: Mary Jo Boyter, Ryan Carle-Ogren

One day: Tue, May 5, 2026, 8:15am-2:15pm, SPLI PD Center

This course will focus on various skills needed for facilitating SPLI sessions. Topics will include creating rapport, presenting strategies, adult learning attributes, various audience types, presentation strategies, and SUSD SPLI professional expectations.

☐ Stress Strategies, Building Resilience, and Creating a Mindful and Supportive Community - Three Educator PDS in one!

Facilitator: Gloria Montijo, El Rio Health

One Day: Thu, December 11, 2025, 8:15am-2:15pm, SPLI PD Center



Part 1: Stress Strategies: Introduction to Toxic Stress and Mindfulness: 1-hour session. This presentation will address what toxic stress is and does to the body and brain both for adults and during development, how mindfulness tools can mediate the negative effects of stress, and the practice of two quick and easy mindfulness tools as an introduction to evidence-based practices that mediate the negative effects of stress.

Part 2: Building Resilience as a Protective Factor for Burnout: 1.5-hour session. This training focuses on providing and practicing tools to mediate toxic stress first for providers themselves, including teachers, parents, counselors, and staff.

Part 3: Creating a Mindful and Supportive Community in the Classroom: 2-hour session. This training is for educators that addresses how stress affects brain development, cognition, and health; how trauma may present in the classroom and on the playground; strategies to support healthy student socialization and manage reactivity; and self-regulatory practices to improve each educator's own personal management of stress.

STAFF SUPPORT & LEADERSHIP

☐ Thriving Teachers = Thriving Classrooms: Building Well-Being for Success

Facilitators: Carly Carrillo, Amy Fiske

One day: Fri, December 5, 2025, 8:15am-2:15pm, SPLI PD Center



Join us as we delve into the strategies of bestselling author Dr. Marcia L. Tate, exploring 12 brain-based principles for avoiding teacher burnout and increasing health and wellness for teachers. These research-backed strategies will help you thrive personally and professionally.

Collaborate with colleagues as we learn strategies to:

- Understand the root causes and symptoms of educator and teacher stress, overwhelm, and burnout.
- Learn practical strategies proven to help you live better, live longer, and become a better teacher.
- Easy ways to implement these wellness techniques into your life and classroom
- Maintain a lifestyle of happiness and health for long-term success

You can also sign up for the Healthy Teacher, Happy Classroom Book Study that begins on September 8, 2025!

☐ What is Child Find and EMT? The Process and Eligibility for Special Education.

Facilitator: Siomara Enriquez

One Day: Wed, October 1, 2025, 8:15am-1:15pm, SPLI PD Center

Participants will dive into the process a student goes through to become eligible for Special Education. Participants will start by looking at the federal guidelines that mandate districts identify students in need of special education (ChildFind) and the district's processes (MTSS and EMT) that support this mandate. Next, participants will look at how a student is evaluated to determine if they qualify under the 13 eligibility categories listed in the Individual Disabilities Education Act (IDEA).



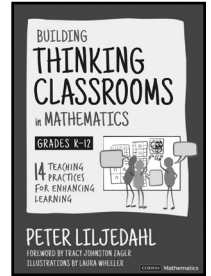
ONLINE BOOK STUDIES

☐ Building Thinking Classrooms in Mathematics, Grades K-12: 14 Teaching Practices for Enhancing Learning

Facilitator: Bisma Aizaz

Online PLC: Starting Mon, September 15, 2025 (Weekly reading and discussion posting)

A thinking student is an engaged student. Sparked by observing teachers struggle to implement rich mathematics tasks to engage students in deep thinking, Peter Liljedahl has translated his 15 years of research into this practical guide on how to move toward a thinking classroom. Building Thinking Classrooms in Mathematics, Grades K-12 helps teachers implement 14 optimal practices for thinking that create an ideal setting for deep mathematics learning to occur. This guide provides the what, why, and how of each practice, firsthand accounts of how these practices foster thinking, and offers a plethora of macro moves, micro moves, and rich tasks to get started. *This book study can be extended in person by signing up for Cultivating Mathematical Minds on November 20, 2025.*



☐ Healthy Teacher, Happy Classroom Twelve Brain-Based Principles to Avoid Burnout, Increase Optimism, and Support Physical Well-Being

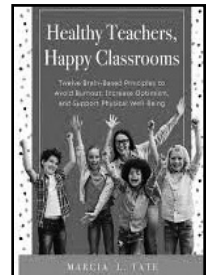
Facilitator: Amy Fiske

Online PLC: Starting Mon, September 8, 2025 (Weekly reading and discussion posting)

Bestselling author Dr. Marcia L. Tate delivers 12 brain-based principles for avoiding teacher burnout and increasing health and wellness for teachers. These research-backed strategies will help you thrive personally and professionally. Avoid burnout with these self-care tips for teachers and other educators:

- Understand the root causes and symptoms of educator and teacher stress, overwhelm, and burnout.
- Learn practical strategies proven to help you live better, live longer, and become a better teacher.
- Integrate wellness principles and coping strategies into your daily life so you feel rejuvenated and ready to serve others.
- Translate your wellness to the classroom, creating happy, ready-to-learn students.
- Maintain a lifestyle of happiness and health for long-term success.

This book study can be extended in person by signing up for the Thriving Teachers = Thriving Classrooms: Building Well-Being for Success on December 5, 2025.



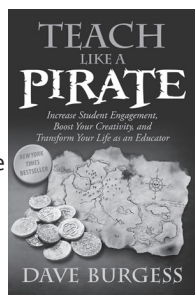
ONLINE BOOK STUDIES

☐ Teach Like a Pirate

Facilitator: Carly Carrillo

Online PLC: Starting Mon, January 26, 2026 (Weekly reading and discussion posting)

Based on Dave Burgess's popular "Outrageous Teaching" and "Teach Like a PIRATE" seminars, this book offers inspiration, practical techniques, and innovative ideas that will help you to increase student engagement, boost your creativity, and transform your life as an educator. You'll learn how to Tap into and dramatically increase your passion as a teacher, develop outrageously engaging lessons that draw students in like a magnet, establish rapport and a sense of camaraderie in your classroom, and transform your class into a life-changing experience for your students.

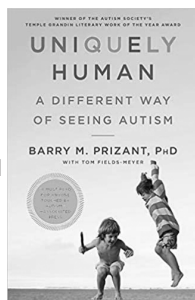


☐ Uniquely Human (A Different Way of Seeing Autism)

Facilitator: Jan Bryson

Online PLC: Starting Mon, October 20, 2025 (Weekly reading and discussion posting)

Autism is usually portrayed as a checklist of deficits, including difficulties interacting socially, problems in communicating, sensory challenges, and repetitive behavior patterns. This perspective leads to therapies focused on ridding individuals of autistic symptoms. In *Uniquely Human*, Dr. Barry M. Prizant suggests a major shift in understanding autism: Instead of classifying "autistic" behaviors as signs of pathology, he sees them as strategies to cope with a world that feels chaotic and overwhelming. Rather than curb these behaviors, it's better to enhance abilities, build on strengths, and offer support that will naturally lead to more desirable behavior and a better quality of life.

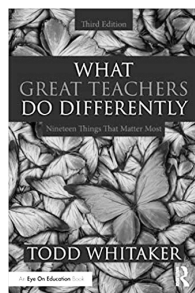


☐ What Great Teachers Do Differently: Nineteen Things That Matter Most

Facilitator: Danielle Groth

Online PLC: Starting Mon, January 26, 2026 (Weekly reading and discussion posting)

What are the beliefs and behaviors that set great teachers apart? In this internationally renowned bestseller, Todd Whitaker reveals 19 keys to becoming more effective in the classroom. This book focuses on why it's about more than relationships, how to focus on a consistent, engaging learning environment, and the importance of choosing the right mode (business, parent, child) to improve your classroom management. Perfect for educators at any level of experience. This practical book will leave you feeling inspired and ready to do the things that matter most for the people who matter most: your students.



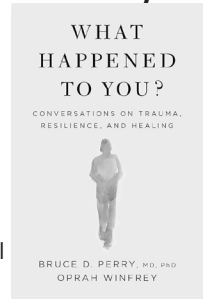
ONLINE BOOK STUDIES

☐ What Happened to You? Conversations on Trauma, Resilience, and Healing

Facilitators: Leigh Burkey, Jan Spooner

Online PLC: Starting Mon, February 16, 2026 (Weekly reading and discussion posting)

What Happened to You?: Conversations on Trauma, Resilience, and Healing” is a collaboration between psychiatrist Dr. Bruce Perry and media mogul Oprah Winfrey. Through poignant discussions and personal stories, they explore the impact of trauma on individuals and society, emphasizing the power of empathy, understanding, and resilience in the healing process. This insightful book offers practical insights and strategies for fostering healing and promoting emotional well-being, inviting readers to embark on a compassionate journey toward healing and wholeness.



Sahuarita Professional Learning Institute

ONE STOP SHOP

2025-2026 Early Release PD Days
Wednesday, November 19 - Wednesday, February 18th

NEW TEACHER INDUCTION

☐ **New Teacher Induction Year 1 K-12**

Required for all certified staff in their 1st year in the district and includes 3 rounds of follow-up coaching support. These sessions will focus on Essential Elements of Instruction, basic classroom management techniques, and an introduction to the culture & community of the Sahuarita Unified School District.

Facilitators: KaSandra Blanco, Mary Jo Boyter, Ryan Carle-Ogren, Liz Flores, Amy Fiske, Carl Nelson, Alya Verdugo

1st-4th Days

Elementary & Secondary (K-12):

Thu-Fri, July 24-25; Mon-Tue, July 28-29, 2025, 7:30am-3:00pm,
Sahuarita Middle School Library.

5th Day

Elementary (K-5): SPLI PD Center

Cohort A: Tue, October 28, 2025, 8:15am-2:15pm

Cohort B: Tue, November 4, 2025, 8:15am-2:15pm

Secondary (6-12): SPLI PD Center

Cohort A: Thu, October 30, 2025, 8:15am-2:15pm

Cohort B: Thu, November 6, 2025, 8:15am-2:15pm

Cohort C: Thu, October 23, 2025, 8:15am-2:15pm

6th Day

Elementary (K-5): SPLI PD Center

Cohort A: Thu, January 29, 2026, 8:15am-2:15pm

Cohort B: Thu, February 5, 2026, 8:15am-2:15pm

Secondary (6-12): SPLI PD Center

Cohort A: Tue, January 20, 2026, 8:15am-2:15pm

Cohort B: Thu, January 22, 2026, 8:15am-2:15pm

Cohort C: Tue, January 27, 2026, 8:15am-2:15pm

Elementary K-2 Saxon and Heggerty Training

Wed, August 20, 2025, 8:15am-1:15pm, SPLI PD Center

Elementary K-5 DIBELS mClass Training

Wed, September 3, 2025, OR Wed, January 21, 2026, 8:15am-2:15pm, SPLI PD Center

☐ **NTI Boost**

Facilitators: Mary Jo Boyter, Ryan Carle-Ogren, Liz Flores

One Day: Mon, January 12, 2026, 8:15am-2:15pm, SPLI PD Center

This course is a comprehensive professional development designed to equip new teachers hired mid-year in SUSD with the knowledge, skills, and strategies essential for success in the classroom.



NEW TEACHER INDUCTION

- ☐ **Elementary K-5 NTI Year 2: Foundations of Elementary Reading Instruction**
Required for all second year Elementary K-5 teachers in the district and includes two cycles of Reading Coaching.

Facilitators: KaSandra Blanco, Mary Jo Boyter, Danielle Pack, Marcy Wagner

Four days: Thu, August 28, 2025; Thu, October 16, 2025; Thu, December 4, 2025; AND
Tue, February 3, 2026, 8:15am-2:15pm, SPLI PD Center

This course is an overview of research-based reading instruction. Content includes implementation of SUSD's Reading Instructional Framework and essential elements of the Big 5. Strategies will be practiced for explicit whole group instruction and targeted small group instruction, including literacy stations.

- ☐ **Secondary 6-12 NTI Year 2:**
All secondary (grades 6-12) teachers in their second year in SUSD are required to attend one course based on their years of experience. Second year secondary teachers will receive one cycle of Collaborative Instructional Coaching focusing on the goal of the selected PD choice.

Secondary 2nd Year NTI in SUSD Choices *(Descriptions provided in the other SPLI Catalog sections)*

Track 1 - Teachers with 1-3 years of teaching experience:

- Active Participation 6-12 - Thu, July 17, 2025 OR Fri, January 23, 2026
- Bridging Abilities: SPED Integration in 6-12 Gen Ed - Fri, November 7, 2025
- Building Relationships: Student-Centered Behavior Intervention 6-12 - Mon, November 24, 2025
- Control the Chaos - Wed, June 4, 2025 OR Fri, November 21, 2025
- KAGAN: Cooperative Learning - Thu, November 13, 2025 AND Fri, November 14, 2025
- Meeting Every Student Where They Are: Differentiated Instruction Essentials - Tue, December 9, 2025
- Supporting Student Diversity: Engaging Empathy and Inclusivity for the Campus and Classroom - Tue, March 3, 2026

Track 2 - Teachers with 4+ years of teaching experience - All options above plus:

- Brain Tools for School - Tue, July 22, 2025 OR Thu, March 5, 2026
- Engage. Enlighten. Excel - Tue, December 2, 2025
- Inquiry-Based Learning 6-12 - Mon, November 17, 2025
- National Board Certification Pre-Candidacy Class - Fri, April 24, 2026 AND Fri, May 1, 2026
- Social and Emotional Learning K-12 - Mon, November 10, 2025
- Youth Mental Health First Aid 6-12 - Wed, October 29, 2025
- Online Book Studies*
- Community Share Participant*

**Please contact Ryan Carle-Ogren for more information about these options.*

CURRICULUM DAYS

Fall Curriculum Days: SPLI PD Center

Computer Tech	Fri, August 1, 2025, 8:15am-2:15pm
HS Science	Tue, August 26, 2025, 8:15am-2:15pm
ELL K-12	Tue, September 2, 2025, 8:15am-2:15pm
SPED 6-12	Fri, September 5, 2025, 8:15am-2:15pm
HS Social Studies	Mon, September 8, 2025, 8:15am-2:15pm
MS Social Studies	Tue, September 9, 2025, 8:15am-2:15pm
Foreign Language	Wed, September 10, 2025, 8:15am-1:15pm
SDPA	Wed, September 10, 2025, 9:00am-12:00pm
HS Math	Thu, September 11, 2025, 8:15am-2:15pm
MS Science	Mon, September 15, 2025, 8:15am-2:15pm
HS ELA	Thu, September 18, 2025, 8:15am-2:15pm
SPED K-5	Fri, September 19, 2025, 8:15am-2:15pm
MS ELA	Wed, September 24, 2025, 8:15am-1:15pm
MS Math	Fri, September 26, 2025, 8:15am-2:15pm
MS CTE	Wed, October 1, 2025, 8:15am-1:15pm
Visual Art	Wed, October 1, 2025, 8:15am-1:15pm
Advanced Placement	Wed, October 15, 2025, 8:15am-1:15pm
PE	Wed, October 22, 2025, 8:15am-1:15pm
HS/MS Math - CPM	Fri, October 24, 2025, 8:15am-2:15pm
Librarians	Wed, October 29, 2025, 8:15am-1:15pm
Gifted K-2	Wed, November 19, 2025, 8:15am-1:15pm
Gifted 3-5	Wed, December 10, 2025, 8:15am-1:15pm

Spring Curriculum Days: SPLI PD Center

SPED 6-12	Thu, January 15, 2026, 8:15am-2:15pm
SPED K-5	Fri, January 16, 2026, 8:15am-2:15pm
Vertical ELA - WG/ATS	Mon, February 2, 2026, 8:15am-2:15pm
Vertical ELA - SHS/SMS/WRS	Fri, February 6, 2026, 8:15am-2:15pm
Vertical Science - WG/ATS	Mon, February 9, 2026, 8:15am-2:15pm
Vertical Science - SHS/SMS/WRS	Tue, February 10, 2026, 8:15am-2:15pm
SDPA	Wed, February 11, 2026, 9:00am-12:00pm
Vertical Math - SHS/SMS/WRS	Mon, February 16, 2026, 8:15am-2:15pm
MS ELA - Ready Reading	Tue, February 17, 2026, 7:30am-10:30am
Vertical Math - WG/ATS	Thu, February 19, 2026, 8:15am-2:15pm
Vertical Social Studies - SHS/SMS/WRS	Mon, February 23, 2026, 8:15am-2:15pm
Vertical Social Studies - WG/ATS	Tue, February 24, 2026, 8:15am-2:15pm
Librarians	Wed, March 4, 2026, 8:15am-1:15pm
ELL K-12	Wed, March 25, 2026, 8:15am-1:15pm
Music	Thu, March 26, 2026, 8:15am-2:15pm

SUSD TECH

☐ Creating Digital Communication with Canva

Facilitators: Jan Bryson, Sara Mora

One day: Wed, October 22, 2025, 8:15am-1:15pm, SPLI PD Center

In this PD, we will be diving into the many uses of Canva for both Classified and Certified staff members. Since educators and school staff have free access to the Pro features, you will be able to harness the incredible features to create instructional materials, flyers, social media content, and whiteboards. We'll dive into the editing and AI tools that make your material creation easier.

☐ Events 101: Using Sheets for Tracking, Event Planning, and Organization

Facilitators: Rusty Carle-Ogren, Kristina Martin

One day: Wed, August 27, 2025, OR November 5, 2025, 8:15am-1:15pm, SPLI PD Center

Are you confused by all of the numbers and rules when you have to complete a Purchase Order? Come work with us to learn tips and tricks to make your life easier when planning trips, fundraisers, and other events for your students, clubs, and teams. Begin to understand the different sources of funding for public schools and gain useful templates for organization, including a Google version of MailMerge to stay on top of all of your events.

☐ Google Workspace: Calendar, Gmail, Drive, Docs

Facilitators: Jan Bryson, Rusty Carle-Ogren

One day: Mon, October 27, 2025, 8:15am-2:15pm, SPLI PD Center

The Google Workspace used in our district can be used to make your life much, MUCH easier. Take this PD to improve your communication, organization, and collaboration with Gmail, Calendar, Drive and Docs.

☐ Google Workspace: Forms, Sheets, Slides

Facilitators: Rusty Carle-Ogren, Beth Pendolino

One day: Tue, November 25, 2025, 8:15am-2:15pm, SPLI PD Center

This in-service will help you learn the basics of Google Forms, Sheets, and Slide. Learn how to use these Google Workspace Apps to improve your teaching, organization skills, and communication with staff and the community.

☐ Interactive Flat Panels: Classroom Uses and Functions

Facilitators: Laura Jackson, Chrissy Kieninger

One day: Mon, August 25, 2025, 8:15am-2:15pm, SPLI PD Center

In this PD, we will demonstrate and teach the many uses of our brand new Interactive Flat Panels, including how to utilize them in your classrooms. You will learn how to use their variety of interactive widgets and tools, how to personalize your classroom experience and what types of lessons can be enhanced through the use of this technology.



☐ Let's Organize Your Google Drive!

Facilitators: Jan Bryson, Ryan Carle-Ogren

One day: Mon, June 2, 2025 OR Wed, December 3, 2025,
8:15am-1:15pm, SPLI PD Center

Is your Google Drive a mess? Do you get frustrated when you can't find the file you need? Did your drive become an abyss over the past few years? Do you need some time set aside to just simply get a handle on your electronic files? Come and learn the ins and outs of how to organize your Google Drive (and even your entire digital life)!

☐ Mastering EduProtocols: Plug and Play Lessons for a Connected Classroom

Facilitators: Jan Bryson, Sara Mora

One day: Fri, February 20, 2026, 8:15am-2:15pm

This in-service introduces educators to EduProtocols based on the book by Marlena Hebern and Jon Crippa. EduProtocols are lesson routines that can be implemented in any subject or grade level using Google Workspace tools, mainly using Google Slides. Come work and have fun with us to learn how to use these lesson routines in your classroom to make planning and learning easier for you and your students.

☐ Maximizing Parent Engagement: ParentSquare for Educators

Facilitator: Amber Woods

One day: Fri, August 29, 2025, 8:15am-2:15pm, SPLI PD Center

Develop essential communication skills and maximize your proficiency in ParentSquare to enhance school-home partnerships and foster collaborative learning environments. Gain expertise in effective post formatting, design block optimization, direct messaging, forms management, and appointment scheduling.

☐ PowerScheduler: The Pre and Post Build

Facilitators: Amber Woods, Nikki DeSouza

Two days: Mon, November 24, 2025 AND Mon, April 20, 2026, 8:15am-2:15pm,
WGHS Wolf Den

Are you looking to harness the full potential of PowerScheduler to streamline the schedule building process, optimize time, and enhance your efficiency? This professional development class is designed to empower individuals with the knowledge and skills required to effectively utilize the PowerScheduler Program.

CLASSIFIED STAFF



CLASSIFIED STAFF

☐ American Heart Association CPR & First Aid Training

***This is a self-pay training and is for staff that need or want CPR certification. Cost: \$65.00*

Facilitators: Rapid Response Trainers, Amy & Don Fiske

One day: Wed, May 28, 2025, Wed, July 16, 2025, Fri, October, 17, 2025,
OR Fri, January 9, 2026, 8:15am-2:15pm, SPLI PD Center

Get certified in life-saving skills with our American Heart Association CPR and First Aid Training. Learn the essential techniques to respond effectively in emergencies and make a difference when it matters most.

☐ Building Resilience as a Protective Factor for Burnout

Facilitator: Gloria Montijo, El Rio Health

One Day: Thu, December 11, 2025, 9:30am-11:00am, SPLI PD Center

This training focuses on providing and practicing tools to mediate toxic stress first for providers themselves, including teachers, parents, counselors, and staff.

☐ Creating a Mindful and Supportive Community in the Classroom

Facilitator: Gloria Montijo, El Rio Health

One Day: Thu, December 11, 2025, 12:00pm-2:00pm, SPLI PD Center

2-hour professional development session for educators that addresses how stress affects brain development, cognition, and health; how trauma may present in the classroom and on the playground; strategies to support healthy student socialization and manage reactivity; and self-regulatory practices to improve each educator's own personal management of stress.



☐ Creating Digital Communication with Canva K-12

Facilitators: Jan Bryson, Sara Mora

One day: Wed, October 22, 2025, 8:15am-9:45am OR 8:15am-1:15pm, SPLI PD Center

This inservice will dive into the website called Canva. This website allows you to create digital materials that can be used as advertisements, flyers, or newsletters. This PD is offered as an hour and a half PD for the classified staff member who can't get away for a whole day but would still like to learn how to use this digital tool.

☐ Crisis Prevention Intervention: De-escalation Strategies for Teachers

Facilitators: Stephanie Cook, Candace Provencio

One day: Mon, November 10, 2025, 8:15am-2:15pm, SPLI PD Center

Crisis Prevention and Intervention: De-Escalation Basics training aims to empower participants with the knowledge, skills, and confidence to effectively manage crises, promote safety, and support the well-being of students in distress. Participants will learn how to identify different levels of a crisis, and the staff approach to help diffuse the situation. By fostering a proactive and compassionate approach to crisis intervention, participants can create a culture of safety and care within the classroom.

CLASSIFIED STAFF

☐ Google Workspace: Calendar, Gmail, Drive, Docs

Facilitators: Jan Bryson, Rusty Carle-Ogren

One day: Mon, October 27, 2025, 8:15am-2:15pm, SPLI PD Center

The Google Workspace used in our district can be used to make your life much, MUCH easier. Take this PD to improve your communication, organization, and collaboration with Gmail, Calendar, Drive and Docs.

☐ Google Workspace: Forms, Sheets, Slides

Facilitators: Rusty Carle-Ogren, Beth Pendolino

One day: Tue, November 25, 2025, 8:15am-2:15pm, SPLI PD Center

This in-service will help you learn the basics of other Google apps not taught at the Intro to Google 1 class. Learn how to use Forms, Sheets, and Drawing to improve your teaching, organization skills, and communication with staff and the community.

☐ Let's Organize Your Google Drive!

Facilitators: Jan Bryson, Ryan Carle-Ogren

One day: Mon, June 2, 2025 OR Wed, December 3, 2025, 8:15am-1:15pm, SPLI PD Center

Is your Google Drive a mess? Do you get frustrated when you can't find the file you need? Did your drive become an abyss over the past few years? Do you need some time set aside to just simply get a handle on your electronic files? Come and learn the in's and out's of how to organize your Google Drive (and even your entire digital life)!

☐ Mastering School Business Success

Facilitators: Lizette Huie, Kristina Martin

One day: Wed, October 15, 2025, AND Thu, February 19, 2026, 10:00am-12:00pm, SPLI PD Center

Join the SUSD Business Office for a comprehensive training session designed to keep you informed on the latest updates in the area of school finance. Gain valuable tips and best practices for using iVisions and other business services software more effectively. Each session will cover topics based on staff feedback across the district, ensuring relevant and practical insights. Plus, personalized one-on-one coaching will be available at the end of each session to provide additional support and answer your specific questions.



☐ Stress Strategies: Introduction to Toxic Stress and Mindfulness

Facilitator: Gloria Montijo, El Rio Health

One Day: Thu, December 11, 2025, 8:15am-9:15am, SPLI PD Center

This presentation will address what toxic stress is and does to the body and brain both for adults and during development, how mindfulness tools can mediate the negative effects of stress, and practice of two quick and easy mindfulness tools as an introduction to evidence-based practices that mediate the negative effects of stress.

CLASSIFIED STAFF

☐ SUSD Quality Service K-12

Facilitators: Betsy Palacios, Darlene Robinson, Dr. Manuel Valenzuela

Three days: Thu, September 18, 2025, Thu, November 6, 2025, AND Thu, December 4, 2025, 8:15am-9:45am, SPLI PD Center

Inspired by the Disney Institute model, participants will learn about district norms for ensuring high quality customer service for all SUSD stakeholders.

☐ Youth Mental Health First Aid K-12

Who should take it? Teachers, school staff, or anyone that works with youth in K-12.

Facilitators: Kelley Coronado, Director of Youth Wellness and Kari Stewart, Program Manager

One day: Wed, October 29, 2025, 7:45am-1:15pm, SPLI PD Center

Youth Mental Health First Aid USA is designed for individuals that regularly interact with youth; teachers, school staff, coaches, parents, etc. Participants are introduced to the unique risk factors and warning signs of mental health problems in adolescents, understand the importance of early intervention, and learn how to assess and help an adolescent in crisis or experiencing a mental health challenge. It is hybrid so some work is required online prior to in-person pd.

☐ Classified Public Works Webinar Offerings

Choose from the following topics to complete a self-paced online webinar course. After you register on the PD Website, you will receive an email from Public Works with the link to complete the online webinar course.

Fall Start Date: Mon, September 15, 2025

Spring Start Date: Mon, February 2, 2026

Topic Options:

- Autism Awareness
- Bus Drivers - Student Behavior Management
- Conflict Management
- Communicating Effectively
- Cultural Sensitivity in the Workplace
- Customer Service Excellence
- Disruptive and Noncompliant Behaviors: Behavioral Interventions
- Dyslexia Awareness
- LGBTQI+ Students - How to Provide Them a Safe, Supportive Educational Environment
- Mental, Emotional, and Behavioral Disorders in Students
- Playground Safety and Supervision
- Safe Work Practices - Classrooms and Offices
- Safe Work Practices - Transportation
- Self-Regulation - Helping Students Stay on Task
- Social and Emotional Learning (SEL) - Strategies for Classroom Instruction
- Substitute Teaching - An Introduction
- Substitute Teaching - Classroom Management and Instruction
- Teaching Children with ADHD - Academic Interventions
- Teaching Children with ADHD - An Introduction
- Teaching Children with ADHD - Behavioral Interventions
- Teaching Strategies: Addressing Student Diversity
- Trauma-Informed Care and Response

CLASSIFIED STAFF

☐ Paraprofessional Training Series

This course is designed to present topics relevant to special education paraprofessionals and allow participants to share their ideas and collaborate with each other. Topics will be chosen based on feedback from the participants, their supervising teachers, and administrators.

Session 1: 1:30pm-2:15pm, OR
Session 2: 2:15pm-3:00pm, OR
Session 3: 3:00pm-3:45pm
SPLI PD Center

Wed, August 27th, 2025
Wed, September 24th, 2025
Wed, October 29th, 2025
Wed, November 19th, 2025
Wed, January 28th, 2026
Wed, February 18th, 2026
Wed, March 25th, 2026
Wed, April 22nd, 2026

CRISIS PREVENTION & INTERVENTION

☐ Crisis Prevention & Intervention (CPI) K-12

Facilitators: Marissa Imperial, Candace Provencio

CPI Foundations K-12: In this foundation course, participants will learn a range of de-escalation skills, preventative strategies, and communication skills. This program is designed to teach critical skills for preventing and defusing disruptive or risky behavior. This class is intended for new employees.

Cohort L:

Thu, September 11, 2025, 8:00am-3:00pm, SPLI PD Center
Fri, September 12, 2025, 8:00am-3:00pm, SPLI PD Center

Cohort M:

Thu, February 12, 2026, 8:00am-3:00pm, SPLI PD Center
Fri, February 13, 2026, 8:00am-3:00pm, SPLI PD Center

☐ CPI Refresher K-12:

In this course, participants will review concepts learned in the foundation course and discuss how to apply these skills in the classroom. This class must be taken annually and Blue Cards will be re-issued every 2 years. Prerequisite: CPI Foundation.

- Thu, July 31, 2025, 8:00am-11:00am, SPLI PD Center
- Fri, August 1, 2025, 11:30am-2:30pm, SPLI PD Center
- Fri, October 3, 2025, 12:15pm-3:15pm, SPLI PD Center
- Fri, March 13, 2026, 12:15pm-3:15pm, SPLI PD Center