



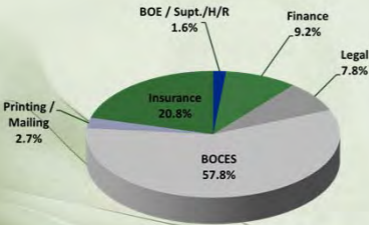
General Administration



General Administration



2014 – 2015 Expenditures by Major Category



General Administration



2014 – 2015 Expenditures by Major Category

Category	2013-14 Budget	2014- 15 Proposed	% Change	Notes
Board of Education, Superintendent and Human Resources	\$41,545	\$41,820	0.66%	Includes annual election and budget vote costs, training, professional development, supplies, etc.
Finance	\$234,557	\$234,875	0.14%	Auditors, contractual, TAN fees, BOCES, supplies, dues, and conferences
Legal	\$200,000	\$200,000	0.0%	Includes retainer, and litigation/hearing expenses
BOCES Administration	\$1,457,090	\$1,473,577	1.13%	Estimated BOCES rate including Regional Information Center (RIC), administrative charges, data processing, local area network management, online job posting, substitute service
Central Printing & Mailing	\$70,000	\$69,700	-0.43%	Elimination of one copier
Insurance	\$529,725	\$529,725	0.0%	Property and liability insurance costs expected to remain stable
Total	\$2,532,917	\$2,549,697	0.66%	