

We look forward to collaborating with you.

# SCR-1 Levee Project Update

Community Meeting

Date: October 19, 2017 • 7:00 p.m.

The Ventura County Watershed Protection District would like to share with you the latest developments and anticipated path toward SCR-1 levee rehabilitation and ultimate FEMA certification that would protect nearly 700 homes and other structures. We invite you to view the presentation, ask any questions you may have, and provide valuable project feedback! To learn a little more before the meeting, visit:

<http://vcpublicworks.org/wpd-programs-and-projects/santa-clara-river-levee-scr-1>

## Meeting Location:

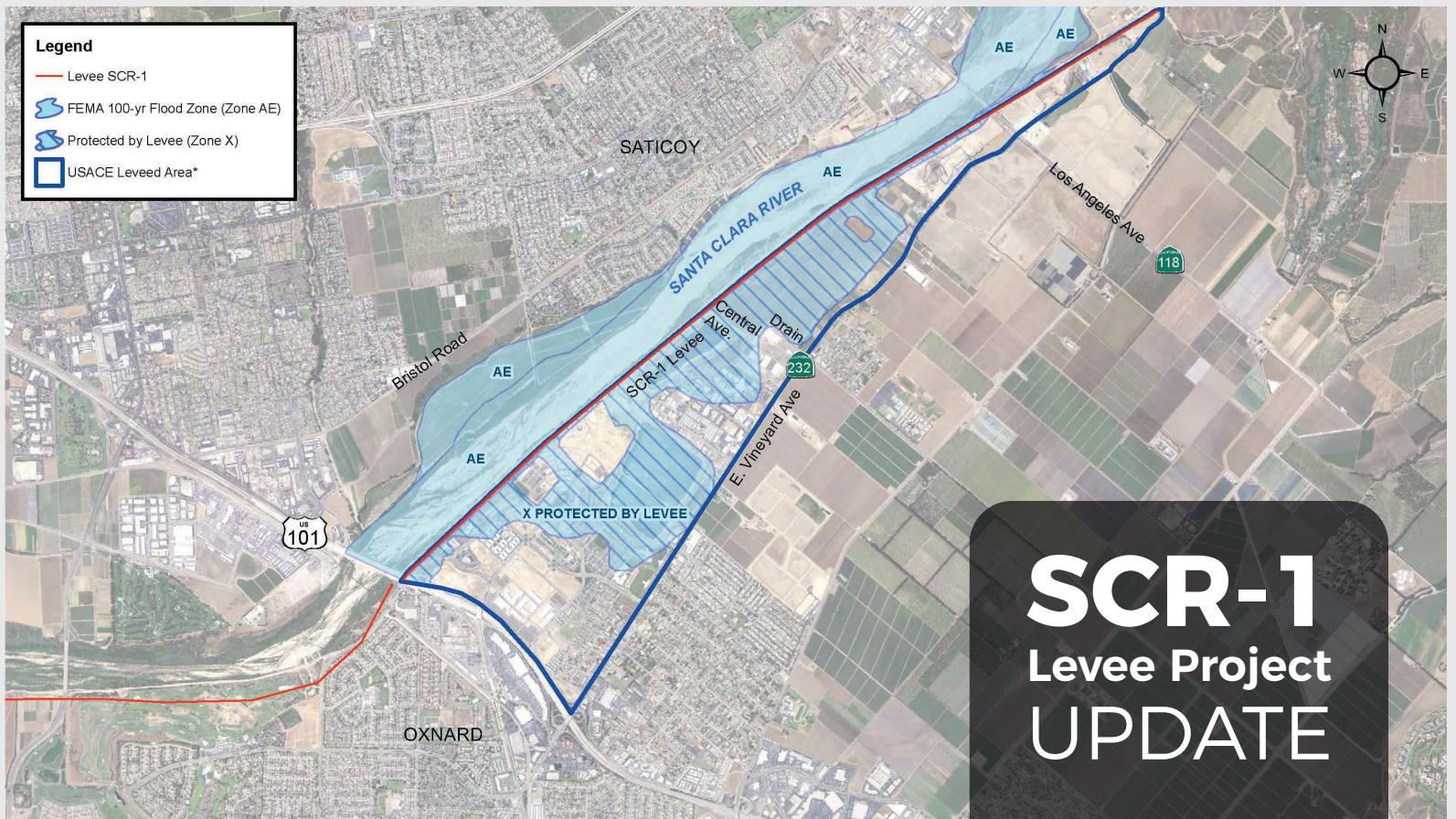
Rio Vista Middle School - Auditorium  
3050 Thames River Road, Oxnard, CA 93036

**Contact:** SCR1info@ventura.org

*Community Meeting Date:  
October 19, 2017 • 7:00 p.m.*

*www.vcwatershed.org  
805.654.2007 office • 805.654.3350 fax  
Ventura, CA 93009-1600  
800 South Victoria Avenue*

VENTURA COUNTY WATERSHED PROTECTION DISTRICT



The SCR-1 levee, constructed in 1961 by the U.S. Army Corps of Engineers (USACE), and currently owned and maintained by the District, extends from Highway 101 to South Mountain along the east bank of the Santa Clara River. It provides flood protection to parts of the City of Oxnard, the River-park neighborhood, and unincorporated areas, including portions of the community of El Rio.

In 2010, the Federal Emergency Management Agency (FEMA) notified the County that SCR-1 would be de-accredited because it does not meet federal requirements under 44 CFR 65.10. Thus, when FEMA remaps this reach of the Santa Clara River, the areas on the landward side of the levee would be shown on the new flood maps as being in a Special Flood Hazard Area (SFHA), resulting in mandatory flood insurance purchase for the property owners within the SFHA. This SCR-1 project would correct the accreditation deficiency. The estimated total project delivery cost is \$41 million. A source of construction funding has not yet been identified.

A Department of Water Resources Local Levee Assistance Program grant will fund project design, environmental constraints analyses during design development, stakeholder outreach, technical studies, environmental impact reports, and obtaining all required state and federal permits. These tasks will be completed by the grant deadline of July 3, 2021.

Please attend the community meeting on Thursday, October 19 at 7:00 p.m. More project details are available at: <http://vcpublicworks.org/wpd-programs-and-projects/santa-clara-river-levee-scr-1>