



# **Covid Safety Plan**

**Peabody Charter Elementary  
2021-2022**



## Guidelines

The purpose and intent of our Opening plan is to provide a smooth and safe opening of the 2021-2022 school year. Peabody is committed to balance the health and safety of its students, staff, and families while continuing to provide a top tier educational program. Our intent is to optimize instructional time and support the social and emotional needs of our students and staff.

This plan is based on various guidelines provided by the California Department of Education (CDE), the Center for Disease Control, and the Santa Barbara County Public Health Department. We will overview the many processes regarding face coverings, health checks, an exposure matrix and more.

### **Philosophy**

As a teaching institution, we strongly believe that in person learning is the optimal environment. All of our decisions are being driven with the intent of keeping kids in school, learning, while following all of the current guidelines. This is a community effort, and we ask that families discuss the information provided with students prior to the start of the school year. We are excited to have your students here, on campus, 5 days a week for a full school day.



## Safety

### ***Student Health and Safety Protocols***

- **Passive Screening**: Parents are to screen students before leaving for school (check temperature to ensure temperatures below 100.4 degrees Fahrenheit, observe for symptoms outlined by public health officials) and keep students at home if they have symptoms consistent with COVID-19 or if they have had close contact with a person diagnosed with COVID-19.
- **Student Testing**: Trained Peabody staff will COVID Rapid Test students on campus **if** a close contact has occurred within the school setting. If a test returns with a positive result, families in the classroom cohort will be notified, and the student who tested positive will be directed to contact their medical professional.
- If a student exhibits symptoms while on Peabody campus, the student will visit the nurse's office and will be isolated in our designated isolation room. Parents will be contacted immediately and are expected to pick the student up as soon as possible.
- Parents will notify Peabody if a student has symptoms or if they have had close contact with a person with COVID-19.
- Peabody will mandate a school culture of wearing face coverings to the extent possible. Masks are required for all students while indoors or at other times when large groups are assembled. Mask wearing may be recommended at the discretion of the administration/staff. Masks are optional outdoors during free play time. Students will be masked during specialist classes due to the nature of the activities and possible close contact. Students may take a mask-break at any time during these activities if needed.
  - Please send students to school with a spare preferred mask so that they may choose to wear a fresh face mask at any time. Peabody will have additional masks available.
- **Alternatives to masks**: Students may choose to wear a face shield **WITH** a drape as an alternative to the face covering. An example image is attached:



- Mask Exemptions:
  - Who Qualifies: Persons with a medical condition, mental health condition, or disability that prevents wearing a mask. This includes persons with a medical condition for whom wearing a mask could obstruct breathing or who are unconscious, incapacitated, or otherwise unable to remove a mask without assistance. [CDPH Mask Exemption](#)
  - A note from a medical professional is required for a mask exemption.
- Peabody will provide face coverings for students if needed, to wear as an option. ***We encourage students to bring their own masks from home.***
- Peabody has formed stable grade level groups in order to limit the points of contact between students. If stable groups overlap outdoors, they will be masked during this interaction. (Ex: Buddy classes meet outside)
- Before School, if a student is dropped off between 7:30-8:00 Monday through Thursday or 8:00-9:15 on Friday, students will wear masks due to the mixing between grade level groups.

### **Updated Guidelines for Covid Exposure for Students**

The current guidelines for student exposure to Covid is different from the prior school year. There are **modified quarantine** requirements if students are masked and have close contact and *different requirements* if a student is *not masked* with close contact. Close contact is defined as more than 15 minutes over a 24-hour period within 0-6 feet indoors. These guidelines are subject to change based on updated guidelines.

Please read this section carefully and refer to the [SBCPH Cohort Protocols Matrix](#):

**Scenario 1: (Close Contact while masked)** There is a student who tests positive for Covid case within a classroom.

- The student with the positive case will isolate for 10 days since symptom onset and contact a health professional.
- The students in that class will begin a **modified quarantine**. Per SBCPH August 2021 Protocols for Symptoms:

When **both parties were wearing a mask in the indoor classroom setting**, unvaccinated students who are close contacts (more than 15 minutes over a 24-hour period within 0-6 feet indoors), may undergo a **modified 10-day quarantine** as follows. They may continue to attend school for in-person instruction if they: Are asymptomatic; Continue to appropriately mask, as required; Undergo at least twice weekly testing during the 10-day quarantine; and Continue to quarantine for all extracurricular activities at school, including sports, and activities within the community setting. Quarantine can end Day 7 if a diagnostic specimen is collected after Day 5 from the date of last exposure and tests negative.

As long as all parties were masked during the entire school day (except for eating and distanced free play), the exposed student will be able to attend school during the 10 day watch period. Students will be administered a rapid Covid test (2) times during the 10 day period, on days 6 and days 8, at Peabody Charter School. This is referred to as the **Modified Quarantine**.

The rapid test is a non-invasive swab in the lower section of the nostril and will be administered by the school nurse, or trained school staff. Parents will be notified initially when there is a positive case in their classroom, but will not be notified every time prior to a rapid test. Once a parent receives notification of the positive contact, there will be **assumed consent** to both rapid tests on day 6 and 8 post contact.

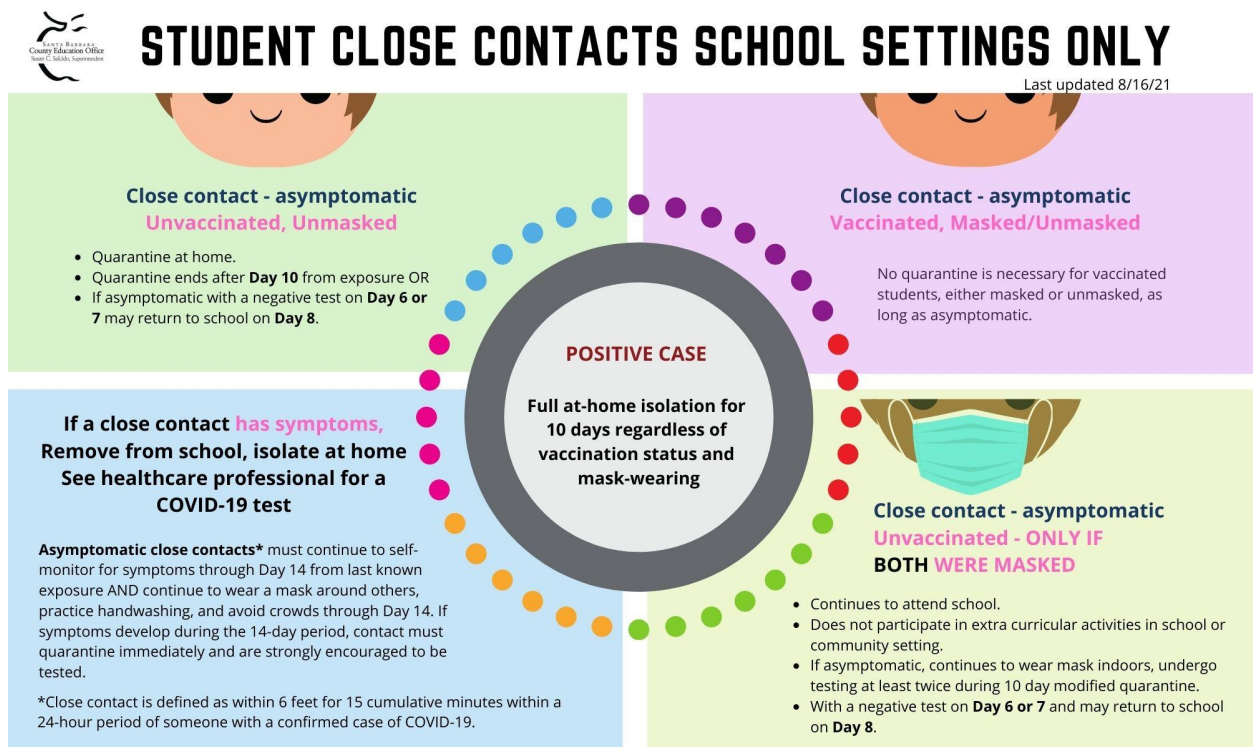
\*\* IF you do not wish to have your child participate in the rapid test, s/he will need to quarantine at home for the 10 day period. **Peabody will send home an opt-out only form with the beginning of the school year documents if you wish to exclude your child from the rapid test procedure required by SBCPH. This will result in a mandatory 10 day quarantine in the case of close contact.** The only time we will administer a COVID rapid test is when there is an in school exposure. Any community exposure requires a COVID test from a medical professional.

## Scenario 2: (Close Contact and not masked during free play)

Another student in the same cohort who did not wear a mask at recess or lunch free play and had close contact with a COVID positive student. (15 minutes or more within 3 feet of space).

- This student would need to quarantine for 10 days at home from the date of exposure OR quarantine can end **after** Day 7 if a diagnostic specimen is collected after Day 5 and is negative. This student would need to come to Peabody on the routine testing days, days 6 and 8, after the exposure to satisfy this requirement.
- If a child chooses **not to wear a mask during outside play times** (recess, lunch, afternoon recess) the **Modified Quarantine will not be available for this student**. S/he will need to quarantine at home for 10 days.

\*\*\*Link to SBCPH [Covid Exposure Matrix](#)



### **Staff Health and Safety Protocols**

- Passive Screening: All staff will self-screen before leaving for work (check temperature to ensure temperatures below 100.4 degrees Fahrenheit, [check for symptoms outlined by public health officials](#)) and to stay home if they have symptoms consistent with COVID-19 or if they have had close contact with a person diagnosed with COVID-19.
- All teachers will have an emergency substitute plan, daily schedule and weekly schedule on file in the office.
- All staff will wear face coverings. Peabody will issue a set of face coverings for each employee. The employee will be responsible for maintaining his/her face coverings.
- Staff will avoid congregating in work environments, break rooms, staff rooms, and bathrooms.
- All teaching staff are vaccinated and will be masked the duration of the school day. Any staff that is not vaccinated will be tested weekly for Covid per the state guideline. All staff will be masked at all times.
- All classrooms are equipped with HEPA air filters and windows will open to encourage circulation as much as possible.
- Classes will have access to outdoor space as needed.

We will need to commit to our shared responsibility to keep our community safe. In order to do this we will be implementing the following:

- Designated isolation room for staff or students who are exhibiting symptoms and are waiting to return home.
- All students and staff who are sick will remain at home for their protection and the well being of others.

### **Symptomatic Student**

What to do if a student is symptomatic while entering campus or during the school day:

- Students who develop symptoms of illness while at school should be separated from others right away. Student will report to the isolation room at the nurse's office and await parent pick up.
- Advise parents of the sick student that he/she is not to return until they have been seen and cleared by a medical professional.
- Nurse will contact the family of student with symptoms to determine next steps.
- Infection Control Coordinator will be notified

## Peabody Charter School Wearing a Mask FAQ

### Q1. How do you select a mask?

#### DO choose masks that



Have two or more layers of washable, breathable fabric



Completely cover your nose and mouth



Fit snugly against the sides of your face and don't have gaps

#### DO NOT choose masks that



Are made of fabric that makes it hard to breathe, for example, vinyl



Have exhalation valves or vents, which allow virus particles to escape

### Q2. How effective are neck gaiters and bandanas in stopping the spread of the coronavirus? Are masks with valves OK?

None of these three types of face coverings works as well as a proper face mask. A good mask has a double layer of washable, breathable fabric that helps keep the wearer from spreading potentially infected droplets into the air. A bandanna tied around the face does not work as well as a mask because it is open at the bottom. A gaiter (a tube of thin, stretchy knit fabric that can be worn around the neck and pulled up to cover the nose and mouth) is usually too thin to provide adequate protection. Likewise, masks with exhalation valves can allow your droplets to escape into the air. Peabody will provide a disposable mask for any student who is wearing one of these masks at school.



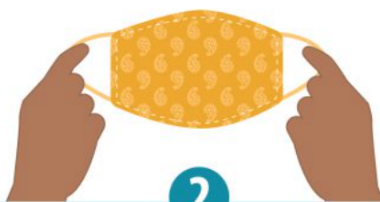
### Q3. How do you take off a mask properly?

#### How to take off a mask



1

Carefully, untie the strings behind your head or stretch the ear loops



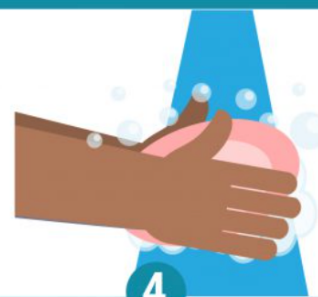
2

Handle only by the ear loops or ties



3

Fold outside corners together



4

Be careful not to touch your eyes, nose, and mouth when removing and wash hands immediately after removing

### Q4. How do you clean a cloth mask?

Masks should be washed regularly. Always remove masks correctly and wash your hands after handling or touching a used mask.

- Include your mask with your regular laundry
- Use regular laundry detergent and the warmest appropriate water setting for the cloth used to make the mask
- Use the highest heat setting and leave in the dryer until completely dry

### Q5. What happens if my child forgets his/her mask or it gets dirty during the school day?

Peabody will give any student who forgets or needs a clean mask a disposable mask.



## Daily Schedule

Peabody will be adopting a traditional school day for the 2021-2022 school year. The Peabody campus will be open at 7:30 for supervised play for students. Students should be masked during this time due to mixing of students. Class time will begin at 8:00am for all students. Students will engage in academic learning throughout the morning with a 20 minute recess in the middle of the morning. All students will have a 45 minute lunch with an opportunity to both eat and play on the playground. In the afternoon, the learning will continue and there will be a 10 minute afternoon recess. Students will have 3 (45) minute sections of PE each week as well as a 30 minute dance class once a week. We hope to add an additional specialist class to every students' schedule this year. K-3 are dismissed at 2:30 and 4-6th are dismissed at 3:00.

## Weekly Bell Schedule

### **Kindergarten:**

August 25th- September 17th

8:00am-1:30pm to allow for assessment and Fridays 9:15-1:30

September 20th- end of school year 8:00-2:30

Fridays 9:15-2:30

### **1st-3rd Grades:**

Monday-Thursday 8:00am-2:30pm

Fridays 9:15am-2:30 pm

### **4th-6th Grades:**

Monday- Thursday 8:00am- 3:00pm

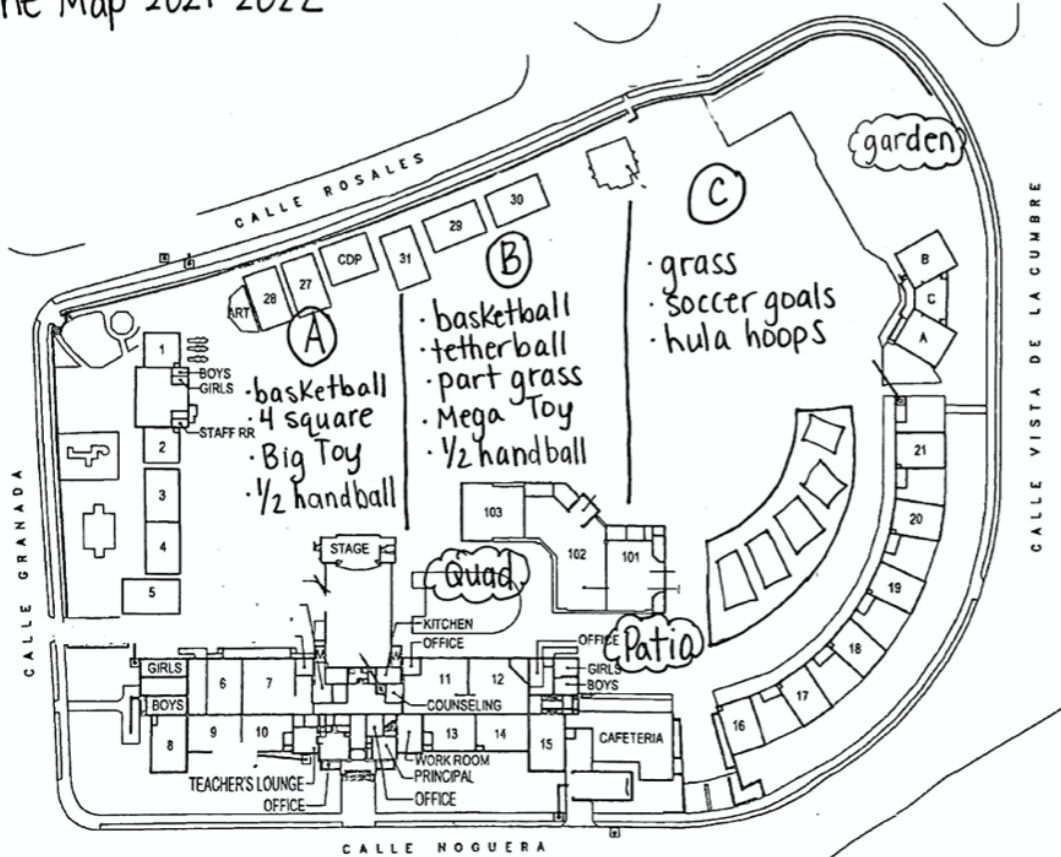
Fridays 9:15am-3:00 pm

\*\*We will have playground supervision available at 7:30am on Mondays-Thursdays and at 8:00am on Fridays.

### **Recess and Lunch Protocols**

- Playground will be divided into (3) zones that allow grade levels to play within their stable group. Grade levels will rotate through the different zones every 2 weeks.
- Students will eat lunch in an assigned zone around the school. Grade Level cohorts will eat in the same designated area every day during lunch.
- **See Zones map**
- Morning recess will be 20 minutes and 10 minutes for the afternoon recess

# Zone Map 2021-2022





<b>2021-2022 Monday-Thursday Bell Schedule</b>							
	<b>K</b>	<b>1</b>	<b>2</b>	<b>3</b>	<b>4</b>	<b>5</b>	<b>6</b>
<b>8:00</b>	START	START	START	START	START	START	START
<b>9:45</b>	RECESS	RECESS	RECESS	RECESS			
<b>10:05</b>					RECESS	RECESS	RECESS
<b>10:25</b>							
<b>11:25</b>	EAT	EAT	PLAY	PLAY			
<b>11:45</b>	EAT	EAT	PLAY	PLAY	PLAY	PLAY	
<b>11:50</b>	PLAY	PLAY	EAT	EAT	PLAY	PLAY	
<b>12:00</b>	PLAY	PLAY	EAT	EAT	PLAY	PLAY	EAT
<b>12:10</b>					EAT	EAT	EAT
<b>12:20</b>					EAT	EAT	PLAY
<b>12:30</b>							PLAY
<b>12:45</b>							
<b>1:30</b>	RECESS	RECESS	RECESS	RECESS			
<b>1:40</b>							
<b>1:45</b>					RECESS	RECESS	RECESS
<b>1:55</b>							
<b>2:30</b>	DISMISSAL	DISMISSAL	DISMISSAL	DISMISSAL			
<b>3:00</b>					DISMISSAL	DISMISSAL	DISMISSAL



2021-2022 Friday Bell Schedule							
	K	1	2	3	4	5	6
9:15	START	START	START	START	START	START	START
10:10	RECESS	RECESS	RECESS	RECESS			
10:20					RECESS	RECESS	RECESS
11:25	EAT	EAT	PLAY	PLAY			
11:45	EAT	EAT	PLAY	PLAY	PLAY	PLAY	
11:50	PLAY	PLAY	EAT	EAT	PLAY	PLAY	
12:00	PLAY	PLAY	EAT	EAT	PLAY	PLAY	EAT
12:10					EAT	EAT	EAT
12:20					EAT	EAT	PLAY
12:30							PLAY
12:45							
1:30	RECESS	RECESS	RECESS	RECESS			
1:40							
1:45					RECESS	RECESS	RECESS
1:55							
2:30	DISMISSAL	DISMISSAL	DISMISSAL	DISMISSAL			
3:00					DISMISSAL	DISMISSAL	DISMISSAL



## Classroom Layout & Protocols

- Staff will adhere to the following classroom protocols:
  - Before School, Before Lunch and After Recess each child will either wash his or her hands or utilize provided hand sanitizer
  - Additional handwashing stations have been placed around the school and hand sanitizer will be available in all classrooms.
- Staff will monitor students throughout the day for signs of illness
- Staff may engage in symptom screening when signs of illness are identified which includes visual wellness check and temperature check with no-touch thermometer (check temperature to ensure temperatures below 100.4 degrees Fahrenheit), and ask all student about COVID-19 symptoms within the last 24 hours and whether anyone in their home has had COVID-19 symptoms or a positive test.
- Grade levels will operate as **stable groups**. Mixing between grade levels will be limited when possible.
- Stuffed animals and any other toys that are difficult to clean and sanitize will not be allowed on campus
- All classrooms will be disinfected and cleaned nightly
  - Desks and Tables, Chairs, Door handles, and sinks

### Specialist Protocols

Our specialists will be teaching in person on campus and will be teaching to a stable learning group (grade level group). Instruction will be delivered both inside and outside based on space availability.

- Physical Education: Physical Education (PE) will be taught outside when possible and students will be masked during instruction. If a student needs a mask-break during PE, that will be provided. Masking allows our teachers to minimize possible COVID exposure and reduce the possibility of quarantine. This will provide more instruction for all students.
- Movement may be taught inside or outside and students will be masked during instruction. If a student needs a mask-break during dance, that will be provided. Masking allows our teachers to minimize possible COVID exposure and reduce the possibility of quarantine. This will provide more instruction for all students.

### Office Protocols

- A physical barrier, plexiglass, will be installed to separate some office functions
- The office, workrooms and staff bathrooms will be disinfected nightly
  - including all counters, sinks and copy machine
- Gloves and hand sanitizer will be provided in the workrooms
- Staff shall avoid staff congregating in the office, staff lounge, and bathrooms.



### Campus Access - Visitors and Guests

**Campus Access** will be available to family and staff during the 2021-2022 school year. All adults and children should be masked when on school grounds before and after school, regardless of vaccination status. Please wear a mask when entering our campus to drop off or pick up your child. Most of our students cannot be vaccinated and their safety is our highest priority.

- Face coverings shall be worn by adults and students:
  - While waiting to enter the school campus
  - While on school grounds
  - While leaving the school
- Breakfast will be served out of the cafeteria starting at 7:30. Students will eat breakfast at the patio tables outside.
- Supervision will be provided before school 7:30-8:00am. All students must be masked during this playground time due to the mixing of grade level groups.
- When possible, families are encouraged to email and telephone office staff with questions or concerns instead of physically visiting the school office. When returning information or forms to the office, send the item to school with your child through the classroom teacher

### Volunteers

Volunteers will be permitted on campus and in the classroom. All volunteers must be vaccinated (per state guidelines) and will need to show proof of vaccination at the front office the first time they check in to receive a visitor's pass. Please bring proof of vaccination every time you check in at the front office, as we will not be keeping vaccination records.

## Field Trips

- Field trips will resume. Look for information from your classroom teacher for specific details.

## Cafeteria



Our amazing cafeteria will begin traditional service for the 2021-2022 school year.

### **ALL PEABODY STUDENTS EAT FREE!**

**Come directly to the cafeteria to pick up breakfast or lunch**

Breakfast: 7:30-8:00

2nd Chance Breakfast: 9:45-10:05

Lunch: 11:20-12:20

**Vegetarians:** Vegetarian meals are available every day!

*Adult Meal Prices: Breakfast is \$3.00 / Lunch is \$5.00*

### FREE AND REDUCED APPLICATIONS

Free and reduced meal applications *do not* need to be completed this year. However, please complete the alternate income form which is part of your online registration. This information is an essential part of the funding our school receives!

Questions? [hallie.ingram@peabodycharter.net](mailto:hallie.ingram@peabodycharter.net) 805.563.1536

## Transportation



We are excited to announce that our bus transportation will resume to pre-covid service. We will have 2 buses servicing Peabody daily. Please see the attached transportation schedule for detailed information.

[Transportation Schedule](#)





## Professional Development and Training

- Our administrative team and our front office staff has been trained by a Santa Barbara Public Health nurse on proper administration of the rapid COVID-19 nasal swab.
- Our administrative team attends a weekly public health meeting with local educational leaders to hear updates and current guidance.



## Communication

Peabody will communicate to staff, students, and parents about new, COVID-19-related protocols, including:

- Proper use of PPE/EPG
  - Cleanliness and disinfection
  - Transmission prevention
  - Guidelines for families about when to keep students home from school. v. Systems for self-reporting symptoms
  - Criteria and plan to close a classroom or school again for physical attendance of students
- Peabody will use existing school resources to amplify messaging: **Parent Square**, school campus signage, marquees, existing handouts, the website, etc. *f*

