



▶ **TRUSTEE AREA  
PROCESS**

ORCUTT UNION SCHOOL DISTRICT

**AUGUST 11, 2021**



**COOPERATIVE  
STRATEGIES**  
ASSESS • PLAN • FUND • BUILD

▶ BACKGROUND

**WHAT IS THE CALIFORNIA VOTING RIGHTS ACT (“CVRA”)?**

- Took effect January 1, 2003.
- Prohibits the use of “at-large” elections when such an election system:

*“impairs the ability of a protected class to elect candidates of its choice or its ability to influence the outcome of an election....”*

-(Elections Code §14027.)

## ▶ TYPES OF ELECTIONS

### AT-LARGE ELECTIONS

Candidates must reside within the District's boundaries and are elected by all the voters who reside in the District's boundaries (Education Code Section 5030(a)). This is the method of election currently used by Orcutt Union School District ("OUSD").

### FROM-TRUSTEE AREA ELECTIONS

Candidates must reside in specific geographic areas within the District's boundaries called "Trustee Areas" but are elected by all the voters who reside in the District's boundaries (Education Code Section 5030(c)).

### BY-TRUSTEE AREA ELECTIONS

Candidates must reside in specific Trustee Areas within the District's boundaries and are elected only by the voters who reside in the same Trustee Areas (Education Code Section 5030(b)). ***This method of election is the only method that is safe from challenge under the California Voting Rights Act.***

▶ TRUSTEE AREA PROCESS

DATE	ACTIVITY
August 11, 2021	<b>Board meeting: First Pre-Map Public Hearing and Presentation</b>
September 8, 2021	<b>Board meeting: Second Pre-Map Public Hearing</b>
October to November 2021	Preparation of draft trustee area scenarios
December 1, 2021	<b>Board Meeting: First Public Hearing on Trustee Area Scenarios</b>
December 15, 2021	<b>Board Meeting: Second Public Hearing on Trustee Area Scenarios</b>
January 12, 2022	<b>Board Meeting: Third Public Hearing on Trustee Area Scenarios Board Selection of Trustee Area Map Board Consideration of Change in Election Method</b>
February 2022	County Committee on School District Organization Holds a Public Hearing and Considers Approval of Change in Election Method and Trustee Area Map
November 2022	First Election Held Utilizing Trustee Areas

▶ SENATE BILL NO. 442

- Waiver submission requirement to the State Board of Education regarding changing the election method have been replaced recently with the passage of SB 442.
- SB 442 provides a county committee on school district organization to by resolution, approve a proposal to establish trustee-areas and to elect governing board members using district-based elections, as defined, without voter approval. Requires the resolution to include a declaration that the change in the method of electing members of the governing body is being made to comply with the purposes of the California Voting Rights Act of 2001. Requires the resolution to take effect upon adoption and will govern all elections for governing board members occurring within 125 days of its adoption.

## ▶ CONSIDERATIONS IN TRUSTEE AREAS



Each area shall contain nearly equal number of inhabitants



Follow man-made and natural geographic features, as much as possible



Drawn to comply with the Federal Voting Rights Act



Respect incumbency, if possible



Compact and contiguous, as much as possible



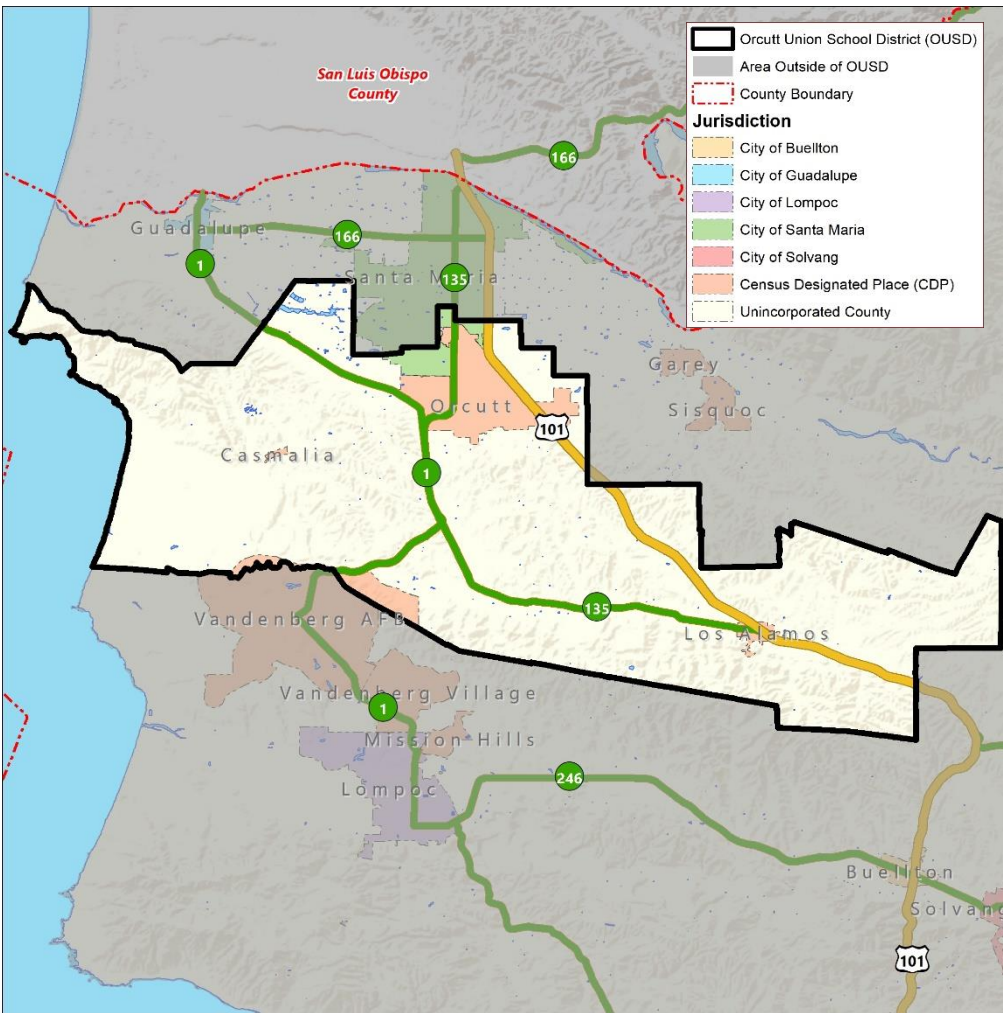
Other local considerations (i.e., school boundaries, locations of school sites)



Respect communities of interest, as much as possible

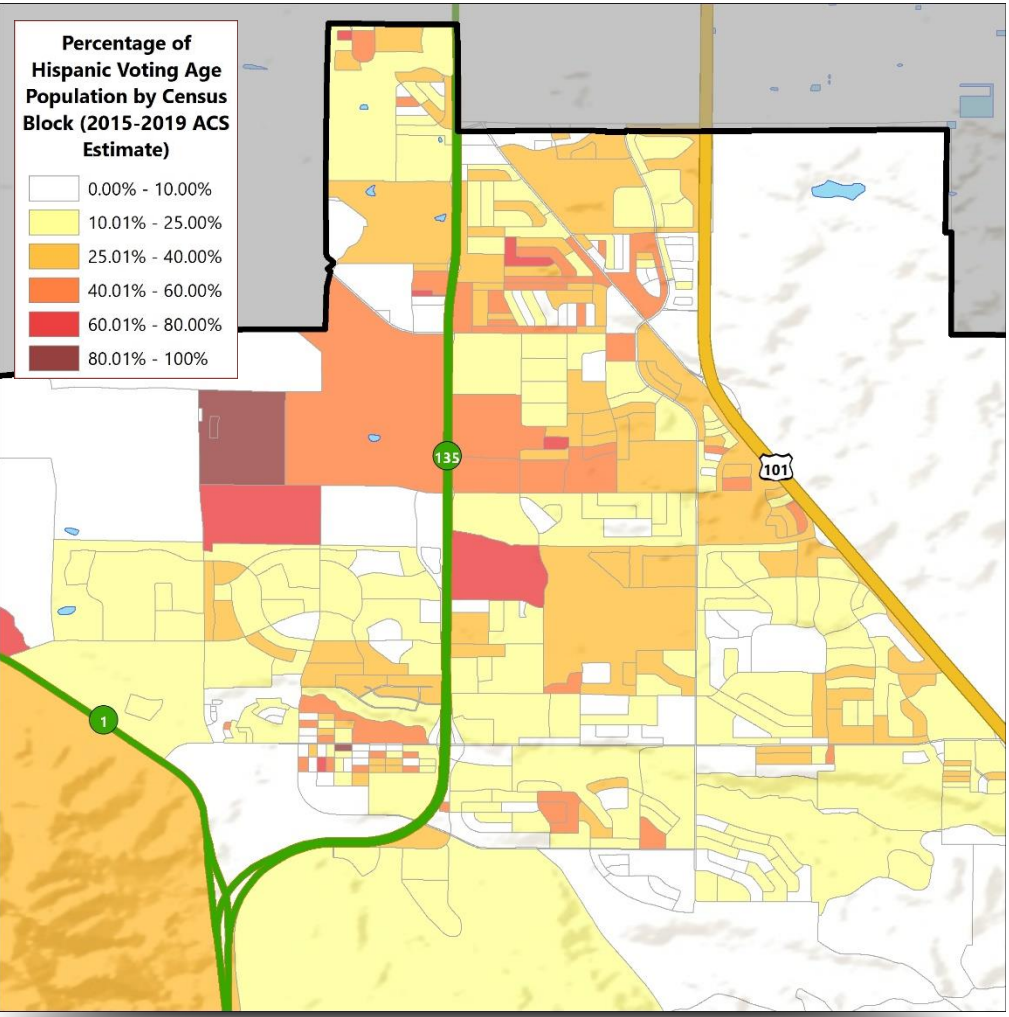
# ► DISTRICT DEMOGRAPHICS

## 2010 CENSUS DATA



Population	Total Population		Age 18 and over	
	Total	%	Total	%
Hispanic/Latino	9,552	26.33%	5,971	21.82%
White	23,794	65.59%	19,269	70.41%
Black / African American	442	1.22%	317	1.16%
American Indian / Alaska Native	195	0.54%	162	0.59%
Asian	1,314	3.62%	1,087	3.97%
Native Hawaiian/ Pacific Islander	60	0.17%	48	0.18%
Other	881	2.43%	488	1.78%
Two or More Races	39	0.11%	23	0.08%
<b>Total</b>	<b>36,277</b>	<b>100.00%</b>	<b>27,365</b>	<b>100.00%</b>

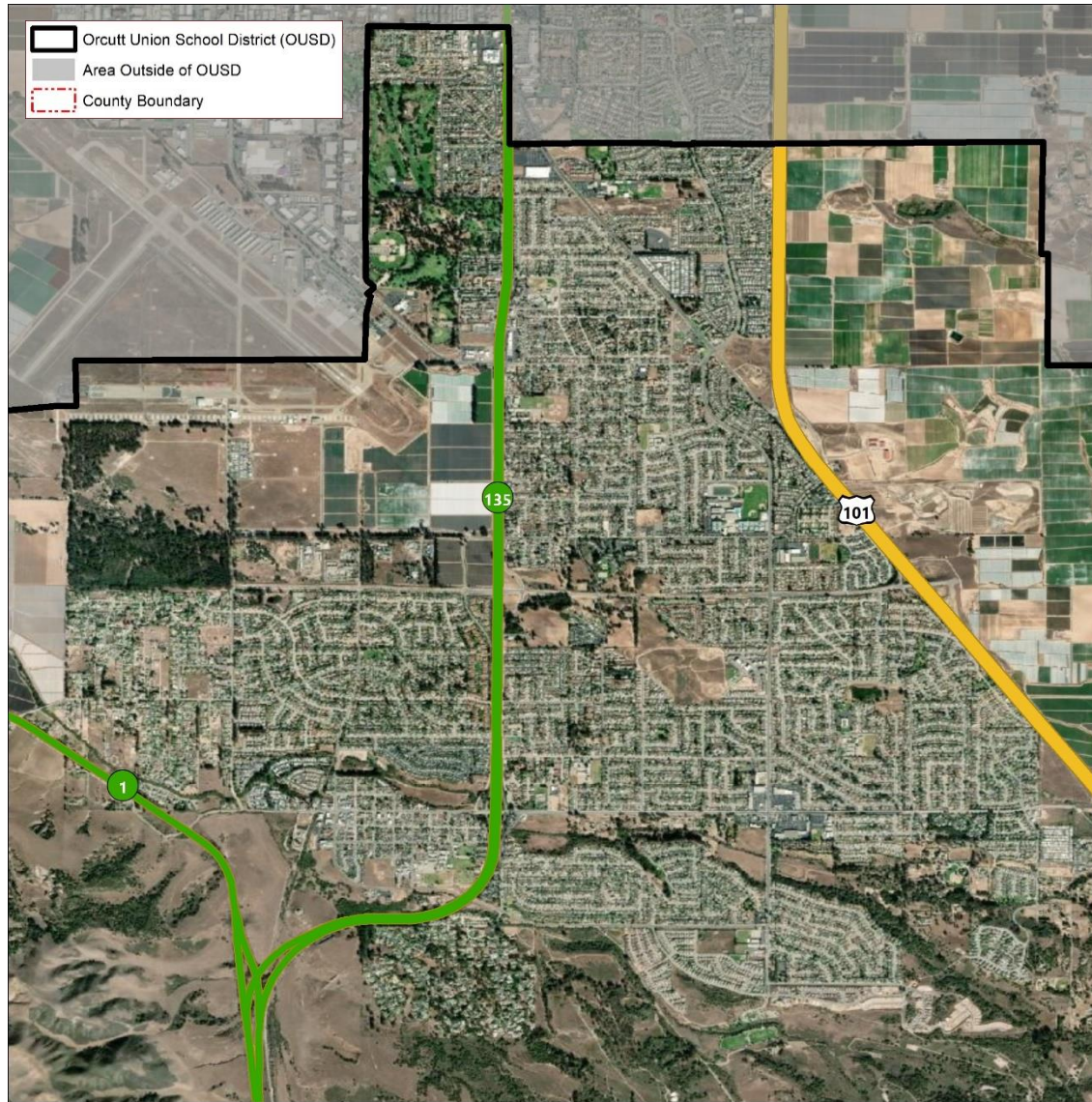
► DISTRICT DEMOGRAPHICS  
**CITIZEN VOTING AGE POPULATION ESTIMATES**



Population	2015-2019 CVAP	
	Total	%
Hispanic/Latino	6,687	23.60%
White	19,026	67.16%
Black / African American	340	1.20%
American Indian / Alaska Native	236	0.83%
Asian	1,040	3.67%
Native Hawaiian/ Pacific Islander	109	0.38%
Two or More Races	893	3.15%
<b>Total Population</b>	<b>28,331</b>	<b>100.00%</b>



▶ HOW SHOULD LINES BE DRAWN?



▶ PRE-MAP PUBLIC HEARING  
**EXAMPLES OF FEEDBACK FOR MAPPING PROCESS**

***“I would like to keep Neighborhood X and Neighborhood Y in the same trustee area...”***

▶ PRE-MAP PUBLIC HEARING  
EXAMPLES OF FEEDBACK FOR MAPPING PROCESS

*I think:*

- ***Union Valley Parkway***
- ***Orcutt Expressway***
- ***Highway 101***

*... may make sense as a trustee area boundary because ...*

- **It keeps communities together**
- **It provides good representation**

▶ PRE-MAP PUBLIC HEARING  
EXAMPLES OF FEEDBACK FOR MAPPING PROCESS

*I think:*

- **All of Y community should be in one area**
- **Each elementary or middle school boundary should be in multiple/single areas**
- **Every trustee area should serve multiple school boundaries/sites**

*... may make sense as a trustee area boundary because ...*

- **It keeps communities together**
- **It provides good representation**



QUESTIONS

A row of yellow school buses is parked in a grassy field. The buses are slightly out of focus, and the scene is overlaid with a large, semi-transparent, stylized letter 'S' graphic. The sky is blue with scattered white clouds.