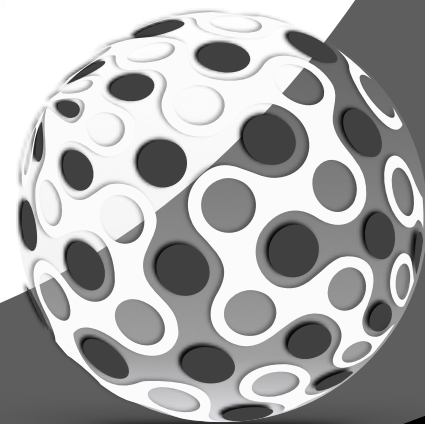


TENOR SAX

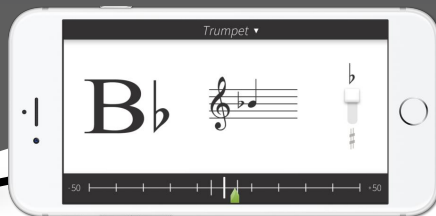
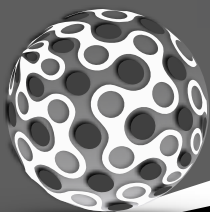
BEGINNING BAND MUSIC BOOK

NAME _____



PART 1

BANDMATE CHROMATIC TUNER
FREE DOWNLOAD!



FREE APP FOR APPLE & ANDROID
www.BandmateTuner.com

BAND KARATE BELT SYSTEM

COMPLETE THE PASS-OFFS & EARN YOUR BELT!

SILVER BELT

#53 Bb Scale | Rhythms 33-40 | #47 "Mary" | #50 "Laughing"

BLACK BELT - ALMOST THERE!

↑6↓6 | Rhythms 25-32 | #42 "Saints" | #45 "Ode"

GREEN BELT

↑5↓5 | Rhythms 21-24 | #35 "Frere" | #39 "Old Mac"

RED BELT - HALFWAY POINT!

16sec. Longtone | ↑4↓4 | Rhythms 17-20 | #27 "Aura" | #32 "Donkey"

PURPLE BELT

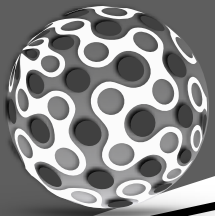
↑3↓3 Notes | Rhythms 9-16 | #19 "Miss Mary" | #23 "Jim Along"

BLUE BELT

12sec. Longtone | Rhythms 5-8 | #14 "Hot Crossed" | #18 "Mary Had"

WHITE BELT

8sec. Longtone | Rhythms 1-4 | #11 "Starlite" | #12 "Rumba"



RHYTHM STUDIES = 1

1 $\frac{4}{4}$

2 $\frac{4}{4}$

3 $\frac{4}{4}$

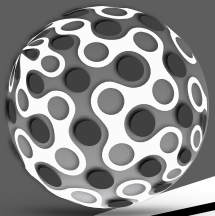
4 $\frac{4}{4}$

5 $\frac{4}{4}$

6 $\frac{4}{4}$

7 $\frac{4}{4}$

8 $\frac{4}{4}$



RHYTHM STUDIES - 2

9 $\frac{4}{4}$

10 $\frac{4}{4}$

11 $\frac{4}{4}$

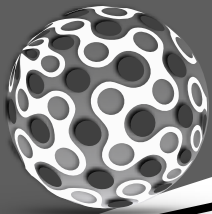
12 $\frac{4}{4}$

13 $\frac{4}{4}$

14 $\frac{4}{4}$

15 $\frac{4}{4}$

16 $\frac{4}{4}$



RHYTHM STUDIES - 3

17 $\frac{4}{4}$

18 $\frac{4}{4}$

19 $\frac{4}{4}$

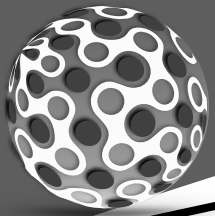
20 $\frac{4}{4}$

21 $\frac{4}{4}$

22 $\frac{4}{4}$

23 $\frac{4}{4}$

24 $\frac{4}{4}$



RHYTHM STUDIES - 4

25 $\frac{4}{4}$

26 $\frac{4}{4}$

27 $\frac{4}{4}$

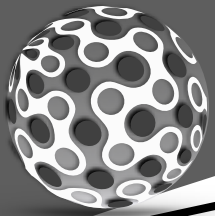
28 $\frac{4}{4}$

29 $\frac{4}{4}$

30 $\frac{4}{4}$

31 $\frac{4}{4}$

32 $\frac{4}{4}$



RHYTHM STUDIES - 5

33 $\frac{4}{4}$

34 $\frac{4}{4}$

35 $\frac{4}{4}$

36 $\frac{4}{4}$

37 $\frac{4}{4}$

38 $\frac{4}{4}$

39 $\frac{4}{4}$

40 $\frac{4}{4}$



BEGINNING BAND 1ST NOTES

G
(CONCERT F)

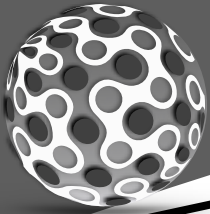
F
(CONCERT Eb)

E
(CONCERT D)

1 THE FIRST NOTE

2 A HAIR LOWER

3 WHICH NOTE IS IT?



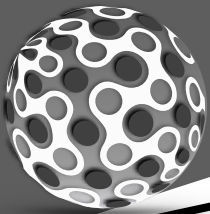
BEGINNING BAND 1ST NOTES

4 3RD NOTE DOWN

5 DOWN & UP

6 DOUBLE UP

7 3 IN THE MIX



BEGINNING BAND 1ST NOTES

G
(CONCERT F)

F
(CONCERT Eb)

E
(CONCERT D)

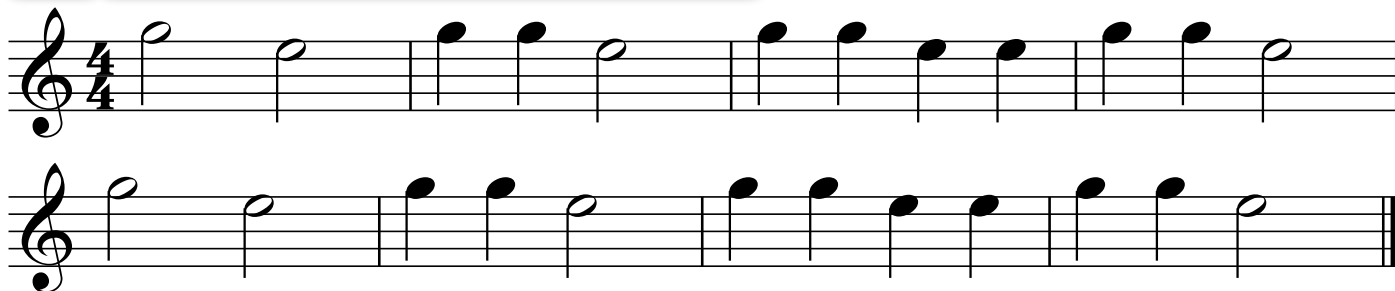
8 QUARTER ATTACK

9 DUET DUEL

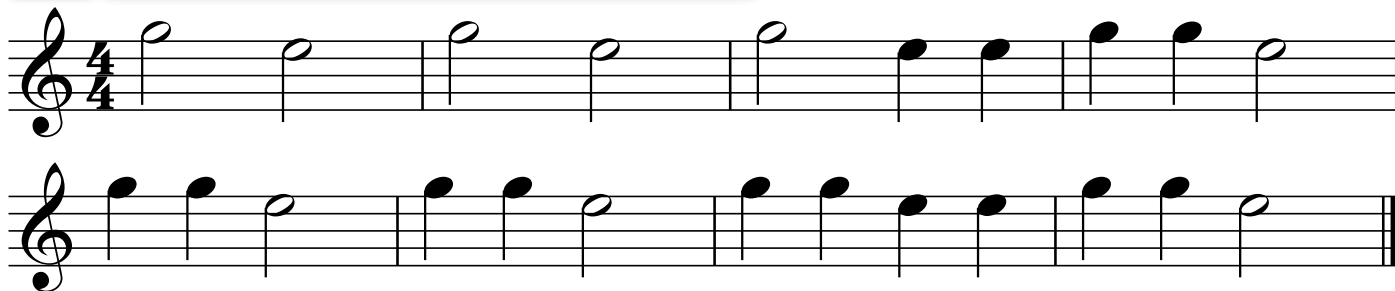


BEGINNING BAND 1ST NOTES

10 RAIN RAIN, GO AWAY

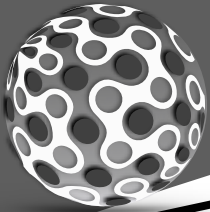


11 STAR-LITE, STAR-BRITE



12 3 NOTE RUMBA





BEGINNING BAND NEXT 2 NOTES

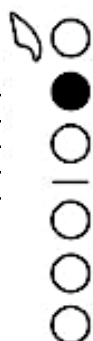
E
(CONCERT D)



D
(CONCERT C)



C
(CONCERT Bb)



13 TWO NOTES LOWER

D C

14 HOT CROSSED BUNS

15 AU CLARE DE LA LUNE

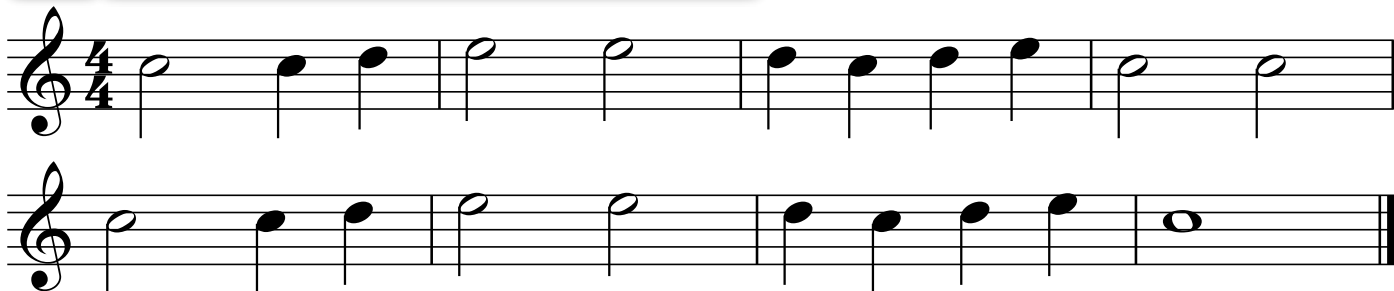


BEGINNING BAND NEXT 2 NOTES

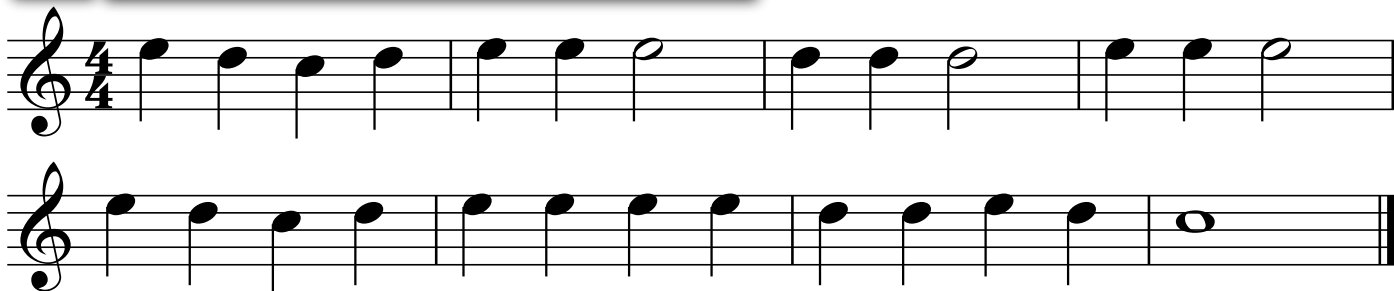
16 GENTLY SLEEP



17 DOWN BY THE STATION



18 MARY HAD A LITTLE LAMB



**THIS IS WHY WE
CLEAN OUR HORNS!!!**

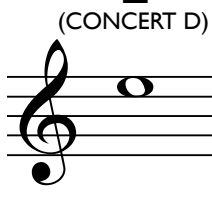


BEGINNING BAND 4 NOTE SONGS

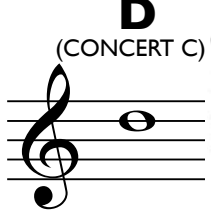
F
(CONCERT Eb)



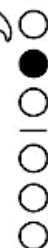
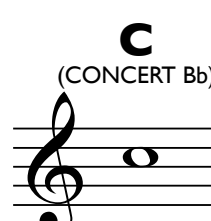
E
(CONCERT D)



D
(CONCERT C)



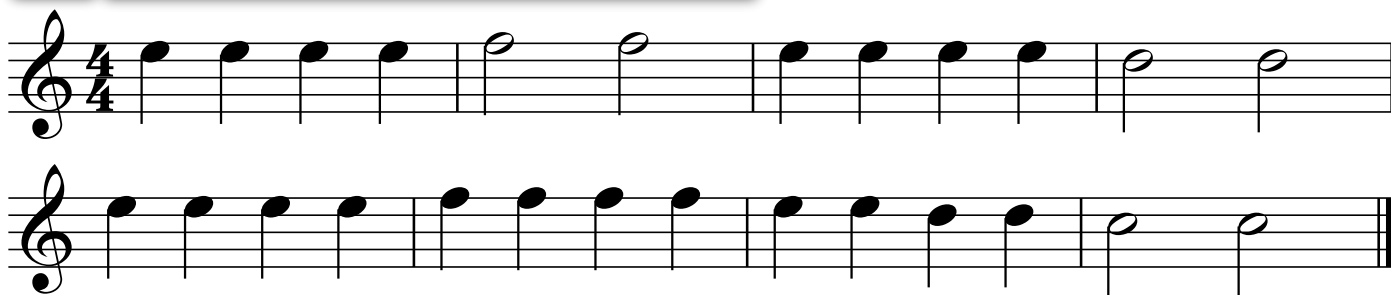
C
(CONCERT Bb)



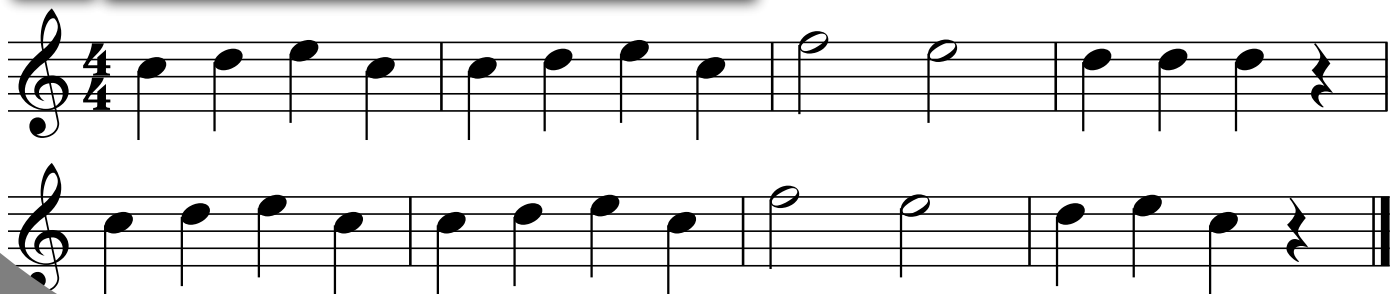
19 MISS MARY MACK



20 PEPPERONI PIZZA



21 NORWEGIAN FOLK SONG





BEGINNING BAND STRIVE FOR FIVE

G
(CONCERT F)

F
(CONCERT E \flat)

E
(CONCERT D)

D
(CONCERT C)

C
(CONCERT B \flat)

25 MERRILY WE ROLL ALONG

26 LIGHTLY ROW

27 AURA LEE



28 JINGLE BELLS

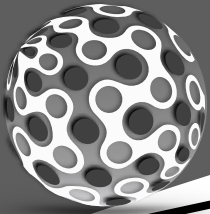
Musical notation for 'Jingle Bells' in 4/4 time, consisting of four staves of music. The melody is written in treble clef. The first staff begins with a treble clef and a 4/4 time signature. The notes are: G4 (quarter), A4 (quarter), B4 (quarter), C5 (quarter), B4-A4 (beamed eighth notes), G4 (quarter), F4 (quarter), E4 (quarter), D4 (quarter), C4 (half). The second staff continues: D4 (quarter), E4 (quarter), F4 (quarter), G4 (quarter), A4 (quarter), B4 (quarter), C5 (quarter), B4-A4 (beamed eighth notes), G4 (quarter), F4 (quarter), E4 (quarter), D4 (quarter), C4 (half). The third staff continues: D4 (quarter), E4 (quarter), F4 (quarter), G4 (quarter), A4 (quarter), B4 (quarter), C5 (quarter), B4-A4 (beamed eighth notes), G4 (quarter), F4 (quarter), E4 (quarter), D4 (quarter), C4 (half). The fourth staff continues: D4 (quarter), E4 (quarter), F4 (quarter), G4 (quarter), A4 (quarter), B4 (quarter), C5 (quarter), B4-A4 (beamed eighth notes), G4 (quarter), F4 (quarter), E4 (quarter), D4 (quarter), C4 (half).

29 REST STOP

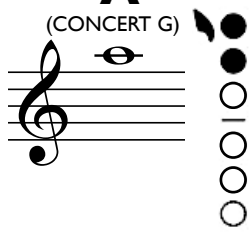
Musical notation for 'Rest Stop' in 4/4 time, consisting of two staves of music. The melody is written in treble clef. The first staff begins with a treble clef and a 4/4 time signature. The notes are: G4 (quarter), A4 (quarter), B4 (quarter), C5 (quarter), B4-A4 (beamed eighth notes), G4 (quarter), F4 (quarter), E4 (quarter), D4 (quarter), C4 (half). The second staff continues: D4 (quarter), E4 (quarter), F4 (quarter), G4 (quarter), A4 (quarter), B4 (quarter), C5 (quarter), B4-A4 (beamed eighth notes), G4 (quarter), F4 (quarter), E4 (quarter), D4 (quarter), C4 (half).

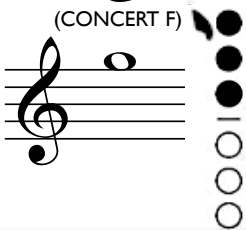
30 DREYDL DREYDL

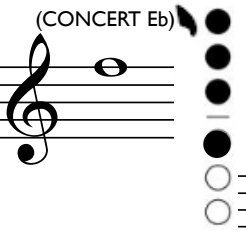
Musical notation for 'Dreydl Dreydl' in 4/4 time, consisting of two staves of music. The melody is written in treble clef. The first staff begins with a treble clef and a 4/4 time signature. The notes are: G4 (quarter), A4 (quarter), B4 (quarter), C5 (quarter), B4-A4 (beamed eighth notes), G4 (quarter), F4 (quarter), E4 (quarter), D4 (quarter), C4 (half). The second staff continues: D4 (quarter), E4 (quarter), F4 (quarter), G4 (quarter), A4 (quarter), B4 (quarter), C5 (quarter), B4-A4 (beamed eighth notes), G4 (quarter), F4 (quarter), E4 (quarter), D4 (quarter), C4 (half).

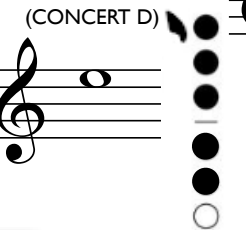


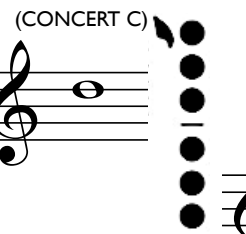
BEGINNING BAND ADD 6 TO THE MIX

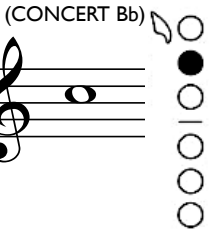
A (CONCERT G) 

G (CONCERT F) 

F (CONCERT Eb) 

E (CONCERT D) 

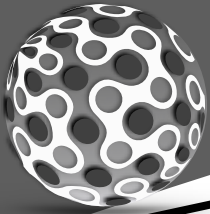
D (CONCERT C) 

C (CONCERT Bb) 

34 LONDON BRIDGE

35 FRERE JACQUES

36 MORNING FROM PEER GYNT



BEGINNING BAND ADD 6 TO THE MIX

A (CONCERT G)

G (CONCERT F)

F (CONCERT Eb)

E (CONCERT D)

D (CONCERT C)

C (CONCERT Bb)

37 THIS OLD MAN

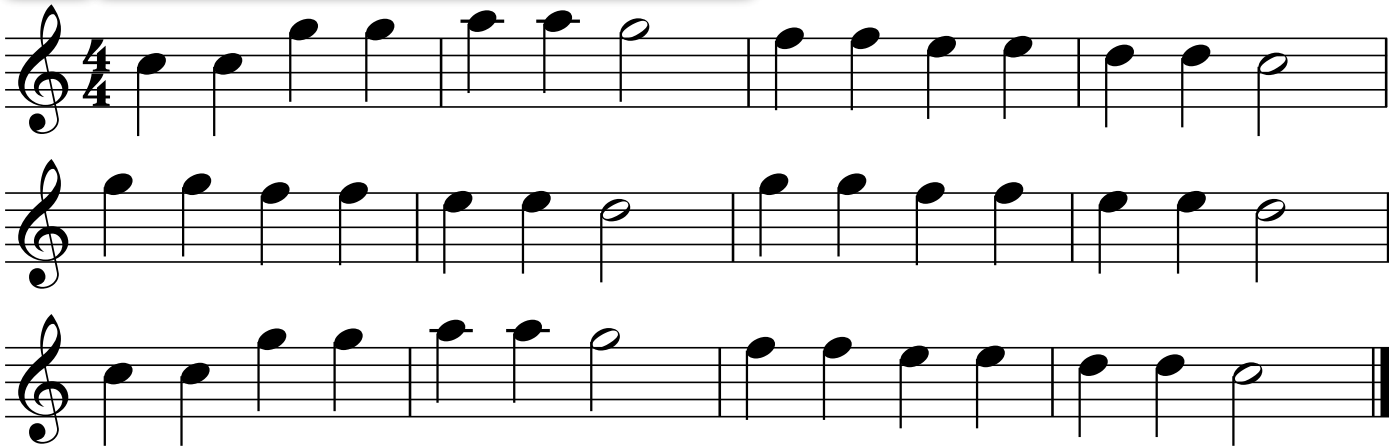
38 THE SNAKE CHARMER

39 OLD MAC DONALD

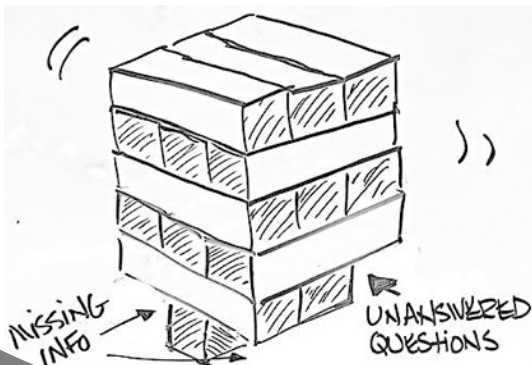


BEGINNING BAND ADD 6 TO THE MIX

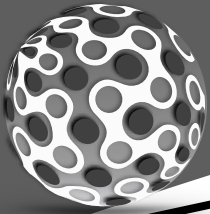
40 TWINKLE TWINKLE LITTLE STAR



41 PEACE LIKE A RIVER



YOU CAN'T BUILD A
BAND WITH MISSING
PIECES...
IT WILL FALL OVER.



BEGINNING BAND ADD 6 TO THE MIX

A (CONCERT G) **F** (CONCERT Eb) **D** (CONCERT C)


G (CONCERT F) **E** (CONCERT D) **C** (CONCERT Bb)

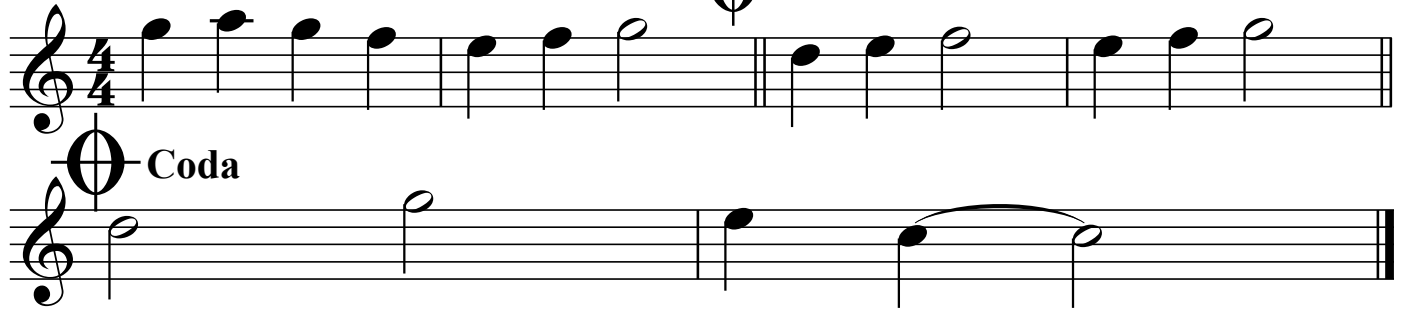
42 SAINTS GO MARCHING IN

43 TWINKLE WITH A D.C. AL FINE



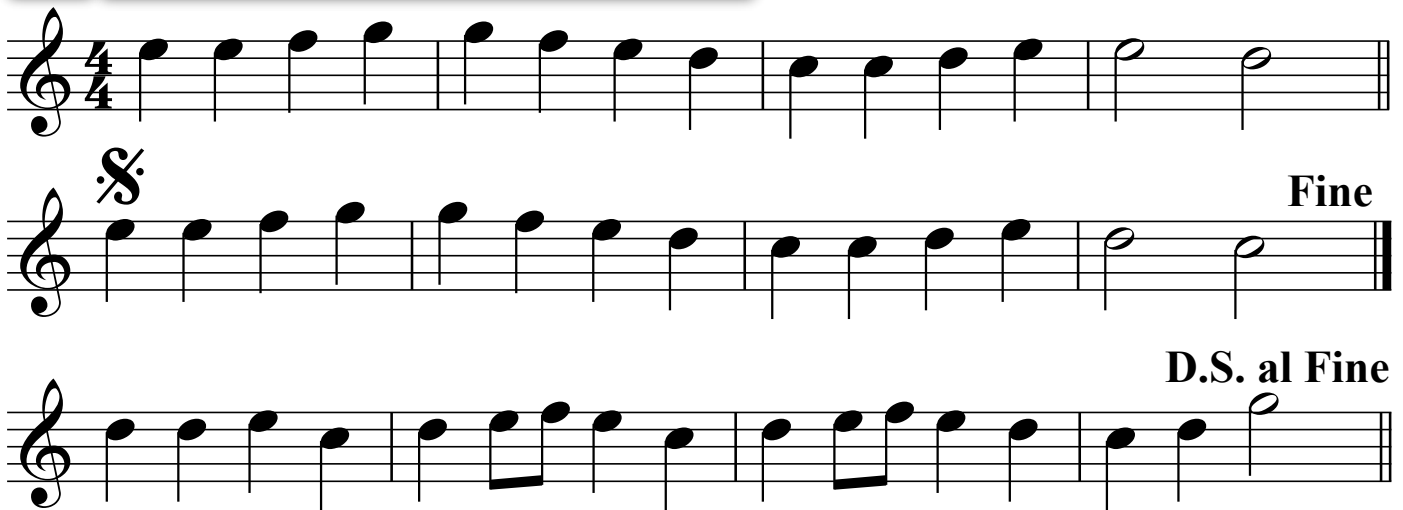
44 LONDON BRIDGE D.C. AL CODA

To Coda  D.C. al Coda



Coda

45 ODE TO JOY



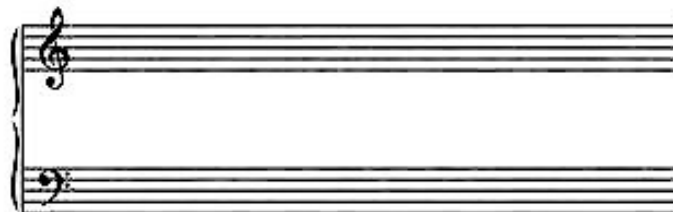
Fine

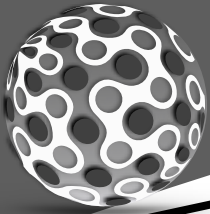
D.S. al Fine

THE SOUND OF SILENCE

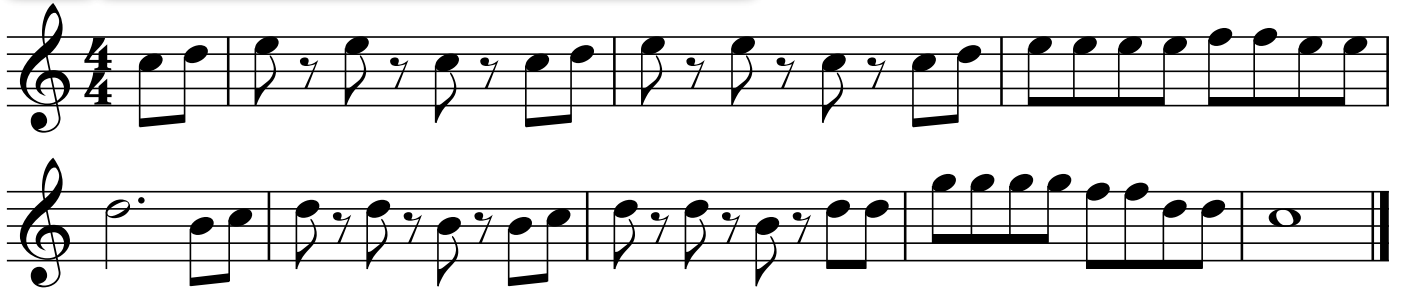
Larghissimo

J. S. Zamecnik

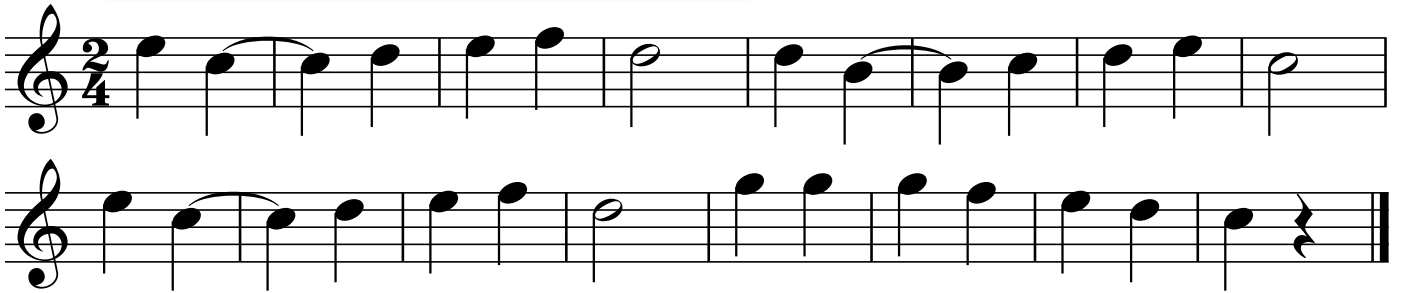




48 POLLY WOLLY DOODLE



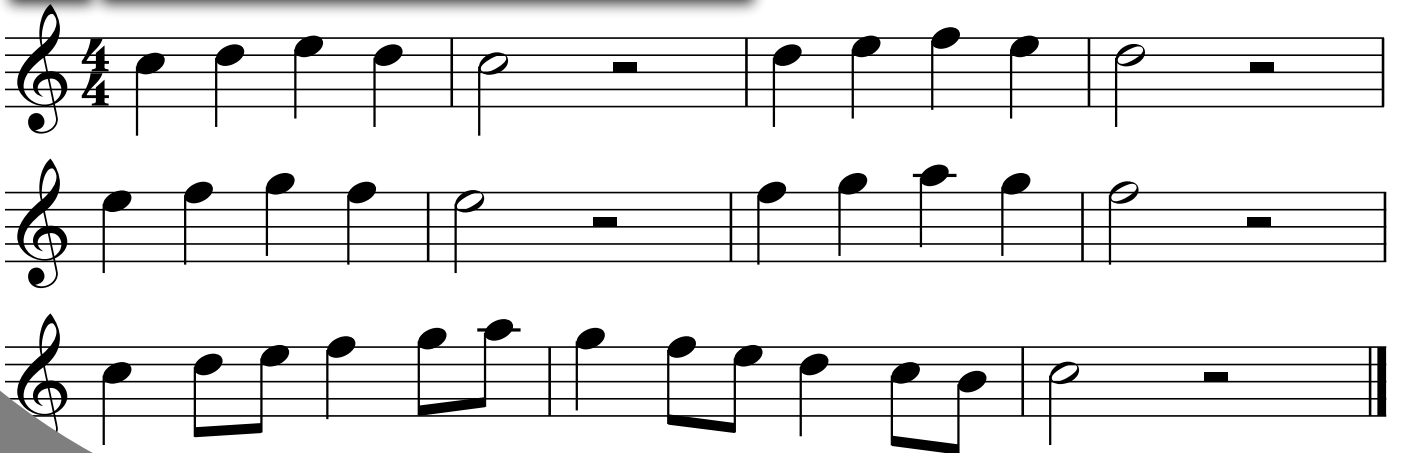
49 SHOO, FLY

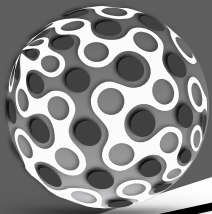


50 LAUGHING SONG



51 7 NOTE PATTERN





52 FOUR PART LITTLE STAR

A

B

C

D

A

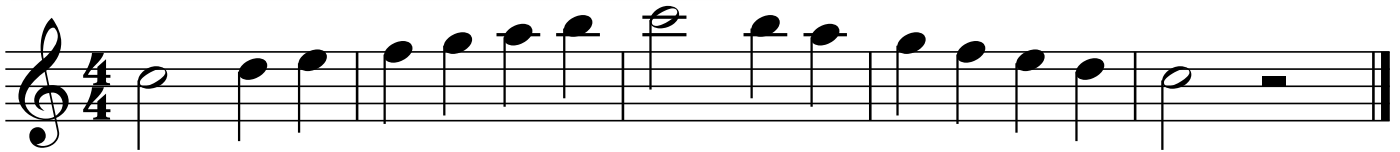
B

C

D



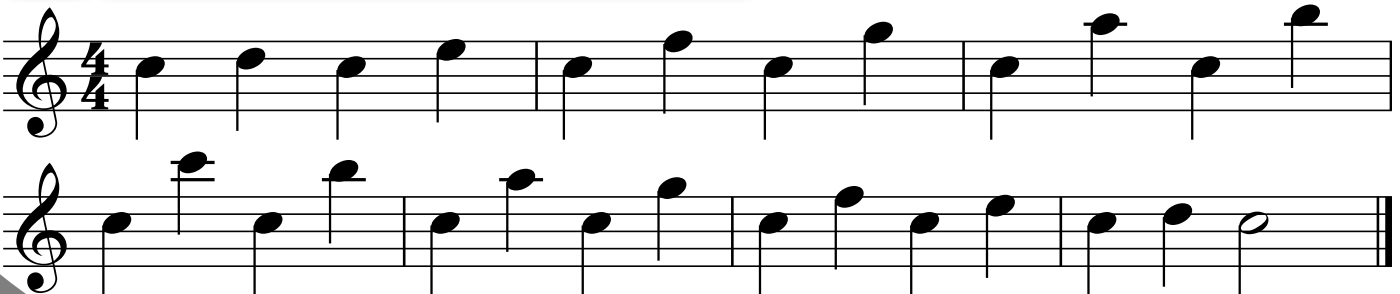
53 Bb SCALE

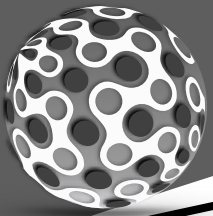


54 Bb SEQUENCE

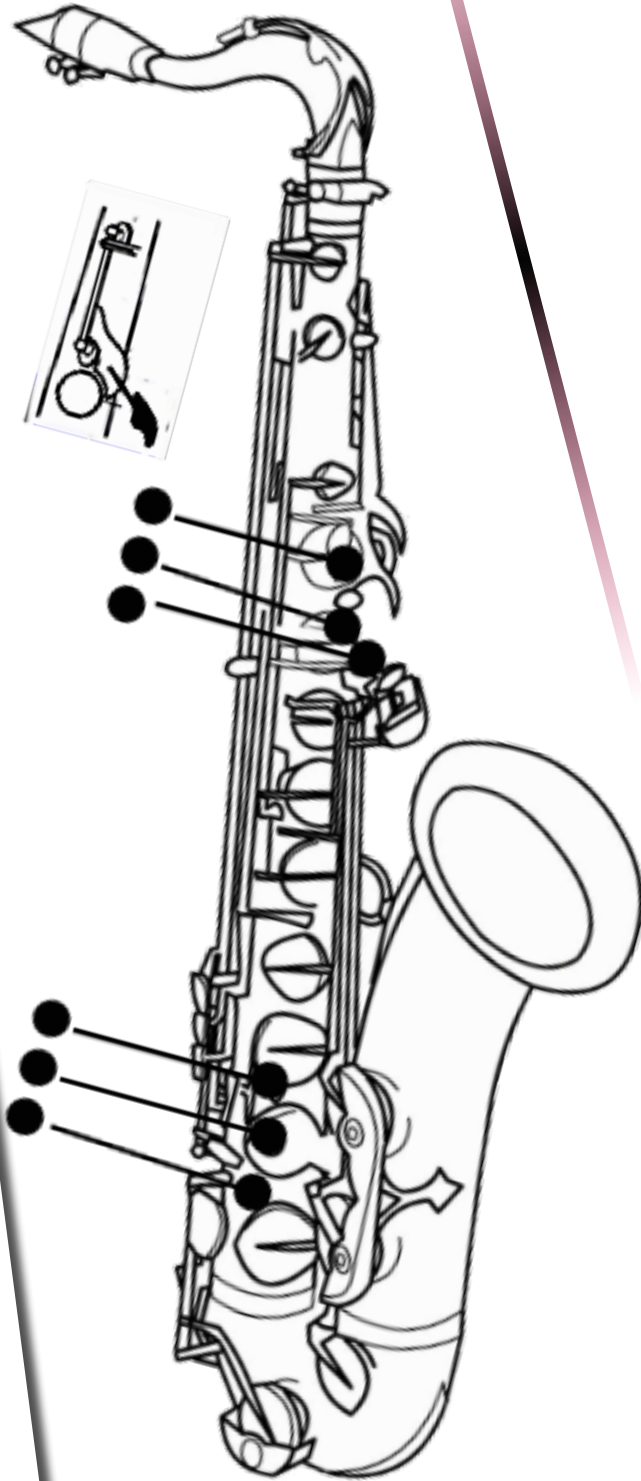


55 Bb ELEVATOR





INSTRUMENT FINGERING CHART



C
(CONCERT Bb)

B
(CONCERT A)

A
(CONCERT G)

G
(CONCERT F)

F
(CONCERT Eb)

E
(CONCERT D)

D
(CONCERT C)

C
(CONCERT Bb)

B
(CONCERT A)

GO ONLINE TO WATCH PERFORMANCES

FLUTE

Nina Perlove
Hubert Laws
Dave Valentin
James Galway
Greg Pattillo
Julius Baker
Robert Aitken
Jean-Pierre Rampal
Jeanne Baxtresser
Benny Goodman
Artie Shaw
Woody Herman
Buddy DeFranco
Pete Fountain
David Shifrin
Richard Stoltzman
Julian Bliss
Larry Combs
Stanley Drucker
Thea King
Mitchell Lurie

CLARINET

Branford Marsalis
John Coltrane
Ben Webster
"Fathead" Newman
Harry Carney
Gerry Mulligan
Dana Colley
Ronnie Cuber
Hermann Baumann
Dennis Brain
Dale Clevenger
Philip Farkas
Barry Tuckwell

BARISAX



Joseph Alessi
Wycliffe Gordon
Christian Lindberg
Slide Hampton
Delfeayo Marsalis
Rubin Eubanks
Christian Lindberg
Ralph Sauer

HORN

Steven Mead
Loren Marsteller
Rich Matteson
Brian Bowman
Leonard Falcone

BARITONE

FAMOUS INSTRUMENTALISTS

Tommy Johnson
Roger Bobo
Jim Self
Doug Tournoquist
Sam Pfaffian
Dan Peratoni
Patrick Sheridan
Baadsvik Oystein

TRUMPET

Wynton Marsalis
Arturo Sandoval
Maynard Ferguson
Chris Botti
Bill Chase
Dizzy Gillespie
Wayne Bergeron
Allen Vizzutti
Chuck Mangione
Jens Lindemann

TUBA

Max Roach
Keiko Abe
Vic Firth
Lionel Hampton
Roy Ayers

Gerald Albright
Candy Dulfer
Charlie Parker
"Cannonball" Adderly
Johnny Hodges
Dr. Otis Murphy
Dr. Eugene Rousseau
Dale Underwood
Maceo Parker

ALTO SAX

PERCUSSION