


NOVATO UNIFIED SCHOOL DISTRICT

DEMOGRAPHIC STUDY

TEN-YEAR DISTRICT PROJECTIONS
2018-19 – 2027-28

FIVE-YEAR SCHOOL PROJECTIONS
2018-19 – 2022-23

 **TOTAL SCHOOL SOLUTIONS**
4751 MANGELS BOULEVARD
FAIRFIELD, CA 94534
(707) 422-6393
(707) 422-6494 (fax)

January 15, 2018

NOVATO UNIFIED SCHOOL DISTRICT

BOARD OF EDUCATION

Debbie Butler, President

Shelly Scott, Vice-President

Maria Aguila, Trustee

Tom Cooper, Trustee

Derek Knell, Trustee

Greg Mack, Trustee

Ross Millerick, Trustee

ADMINISTRATION

Jim Hogeboom, Superintendent

Yancy Hawkins, Asst. Supt. - Business & Operations

FOREWORD

Presented in this Demographic Study is an analysis of recent historical enrollment trends, a review of the major factors at work that influence enrollments, District enrollment projections for the ten-year period 2018-19 through 2027-28 and school projections for the five-year period 2018-19 through 2022-23. These projections should be considered a reasonable estimate of the future based on assumptions documented in this report.

This is an updated Demographic Study report, edited from an earlier draft report dated October 26, 2017.

This report has been prepared to provide the Novato Unified School District Administration and Governing Board with information necessary to make decisions for the District's budget and any future facilities program.

Vern Weber
Total School Solutions
January 11, 2018

Table of Contents

EXECUTIVE SUMMARY1

1. INTRODUCTION5

2. HISTORICAL ENROLLMENT TRENDS7

3. RESIDENTIAL DEVELOPMENT9

4. KINDERGARTEN PROJECTIONS11

5. DISTRICT ENROLLMENT PROJECTIONS17

6. SCHOOL-LEVEL ENROLLMENT PROJECTIONS21

EXECUTIVE SUMMARY

INTRODUCTION. School-level and District-level enrollment projections involve complex factors that influence short- and long-term projections. Below is a summary of how the different components have, and are expected to, impact District and school-level enrollment in the future.

BIRTH AND KINDERGARTEN TRENDS. For Marin County, births were at their high point of 2,865 in 2001 and then declined to 2,288 in 2015, the last year of recorded data. The California Department of Finance predicts that births in 2022 will be 2,132, indicating a continuing declining trend. Actual live births to Novato residents were determined from historical birth data by area zip codes, as shown in the “Births to Residents” table.

Based on County birth trends, future kindergarten enrollments are projected to experience downward movement. The transitional kindergarten (TK) program, which moved the deadline for kindergarten and grade 1 enrollments beginning in 2012-13, was fully implemented by 2015-16. This has resulted in shifts in enrollment between kindergarten and first grade students as some students experienced a two-year kindergarten program.

COHORT MOVEMENT AND MIGRATION PATTERNS. The cohort – the movement of students through the grades over time – is impacted by in-migration, out-migration, residential construction, transfers to/from charter schools, private schools, and homeschooled students. Enrollments have been offset by smaller kindergarten classes replacing larger higher grade classes. This trend will likely continue in the future, and the District is projected to experience decreases in kindergarten enrollment due to decreases in births and minimal residential growth.

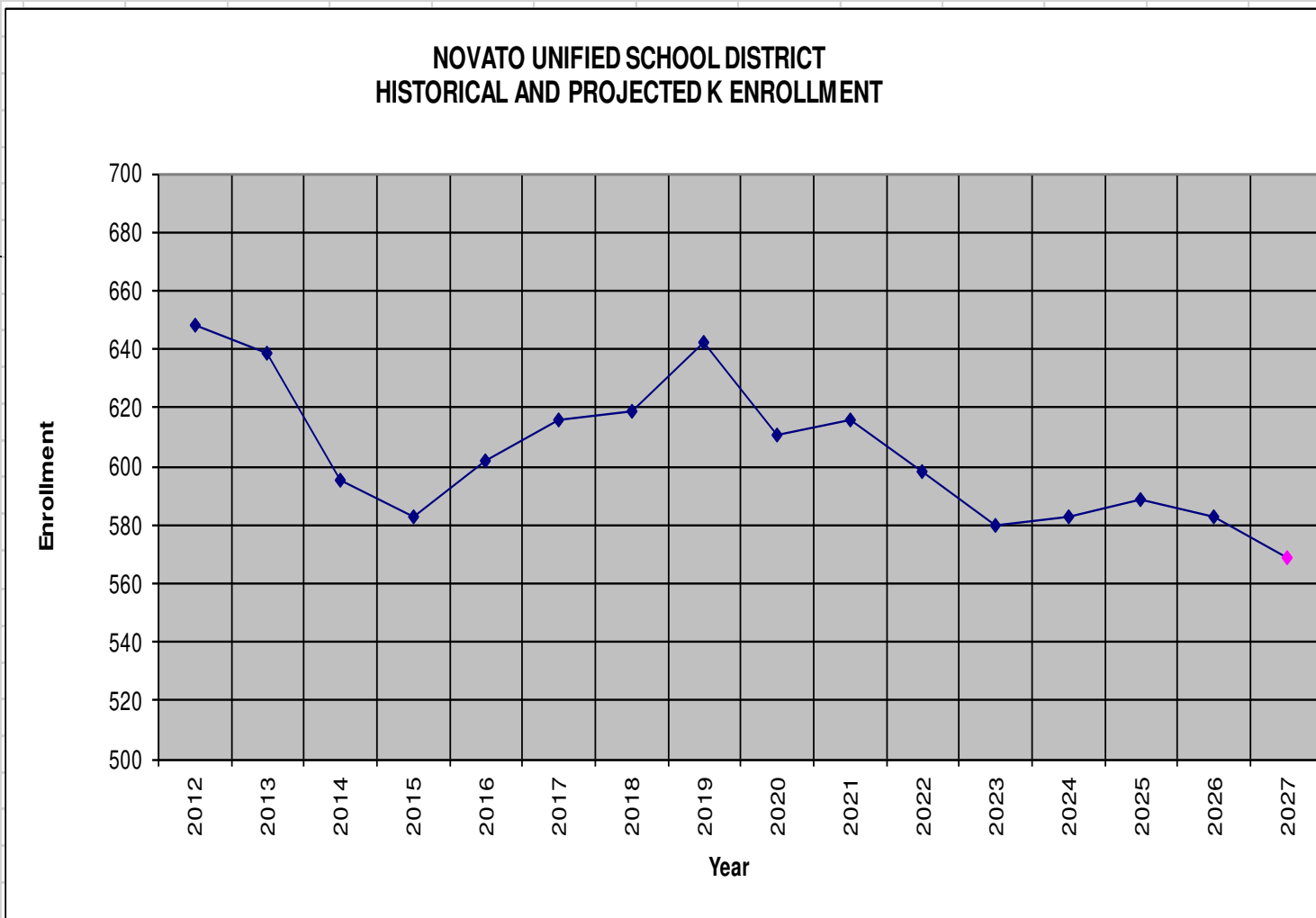
RESIDENTIAL DEVELOPMENT AND GROWTH. Residential development within Novato is subject to new housing allocations under Plan Bay Area, which was prepared in response to 2008’s SB 375 stipulating a Sustainable Communities Strategy (SCS). From the analysis within this report, it appears that minimal residential construction will continue in future years. The 2014-2022 ABAG allocation of 415 units for Novato was a significant reduction of the 2007-2014 allocation of 1,241.

SUMMARY AND CONCLUSIONS

Two significant factors will affect enrollment in the District over the next ten years: (1) the cohort factors and (2) decreasing kindergarten enrollment due to fewer births. The transitional kindergarten program has been fully implemented and is expected to remain fairly level in the future. Based on the collective factors, the District should experience continuing enrollment declines over the next five to ten years. The enrollment trends discussed above are presented graphically below and numerically in tables throughout this report.

DATA FOR K GRAPH

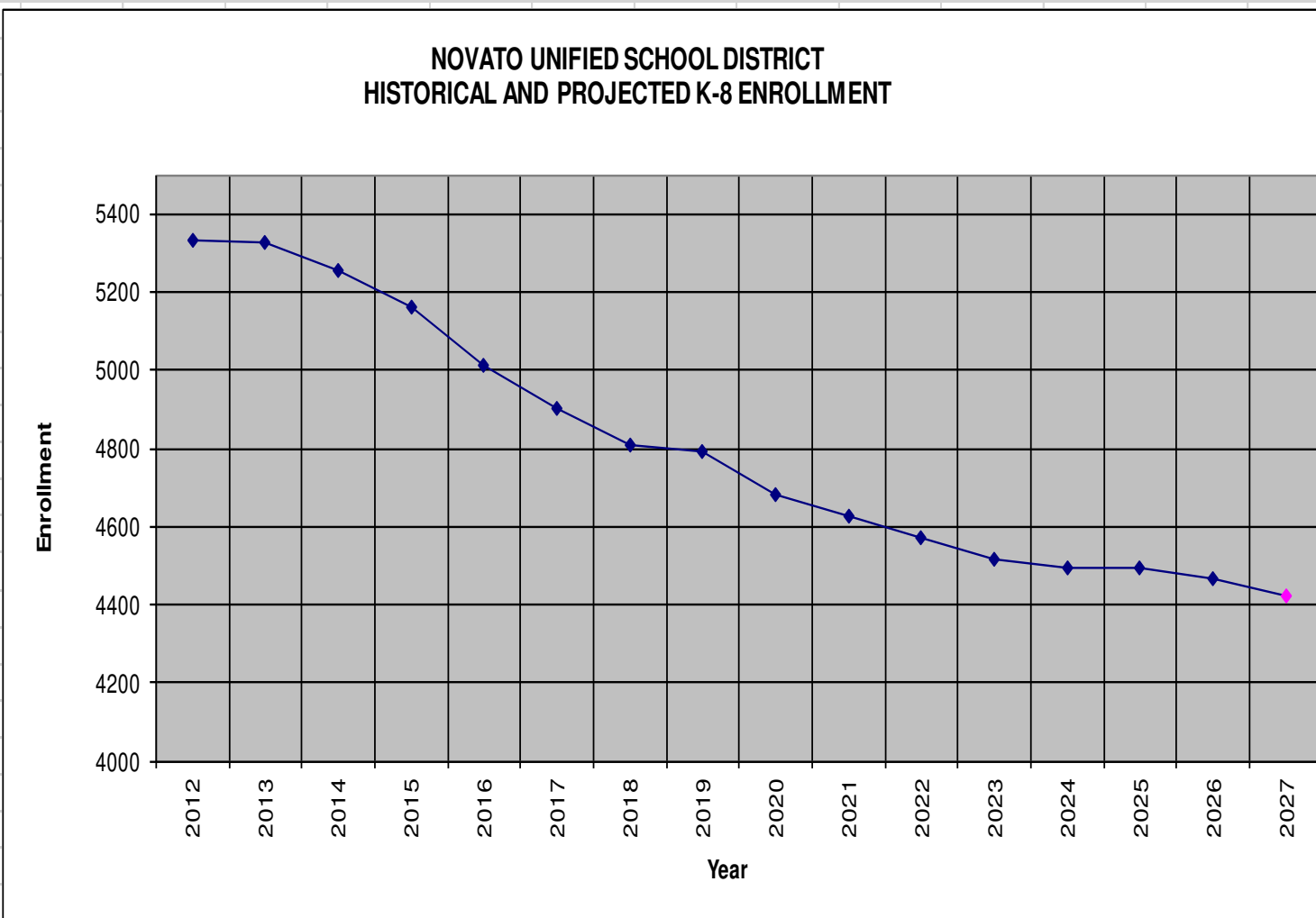
Year	Enrollment
2012	648
2013	639
2014	595
2015	583
2016	602
2017	616
2018	619
2019	642
2020	611
2021	616
2022	598
2023	580
2024	583
2025	589
2026	583
2027	569



Note: K enrollment is projected to decline from 616 in 2017-18 to 569 in 2027-28 – a drop of 47 students.

DATA FOR K-8 GRAPH

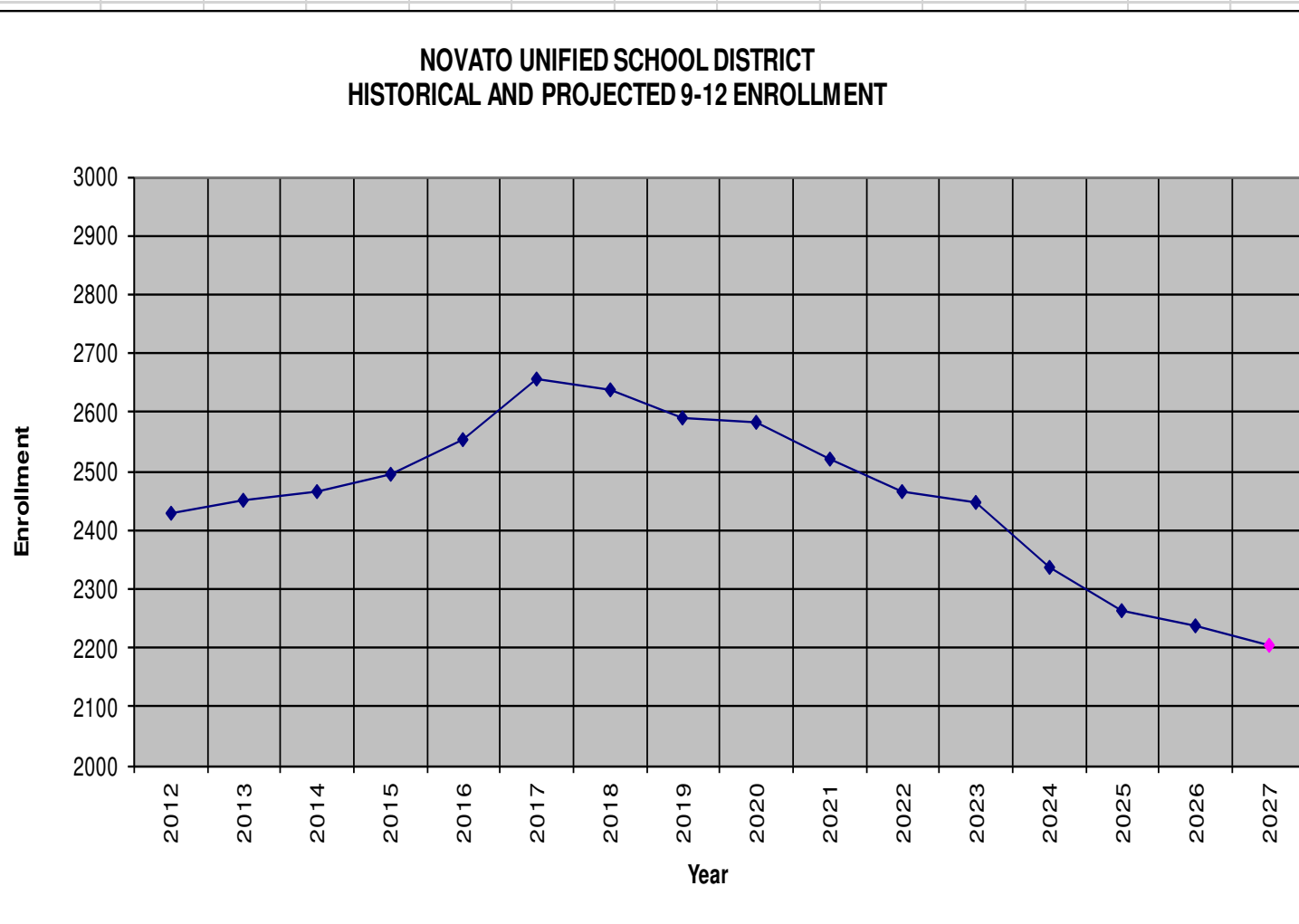
Year	Enrollment
2012	5332
2013	5327
2014	5253
2015	5,163
2016	5,011
2017	4,902
2018	4,809
2019	4,794
2020	4,680
2021	4,628
2022	4,569
2023	4,516
2024	4,496
2025	4,495
2026	4,466
2027	4,423



Note: K-8 enrollment is projected to decline from 4,902 in 2017-18 to 4,423 in 2027-28 – a drop of 479 students.

DATA FOR 9-12 GRAPH

Year	Enrollment
2012	2429
2013	2449
2014	2464
2015	2,495
2016	2,552
2017	2,655
2018	2,637
2019	2,592
2020	2,582
2021	2,522
2022	2,466
2023	2,446
2024	2,336
2025	2,263
2026	2,238
2027	2,205



Note: 9-12 enrollment is projected to decline from 2,655 in 2017-18 to 2,205 in 2027-28 – a drop of 450 students.

1. INTRODUCTION

Student enrollment projections are more accurate with a “top-down” methodology rather than a “bottom-up” approach. As such, enrollment projections were first developed for the District followed by projections on a school-by-school basis. By using this methodology, the District projections become a constraint against school-by-school projections to avoid an over-projection problem that frequently arises when building projections from the “bottom-up.”

To understand the factors that drive enrollment, separate sections have been prepared on growth trends (e.g., residential development, cohort growth and age distribution patterns), birth and kindergarten correlation and regular/transitional kindergarten.

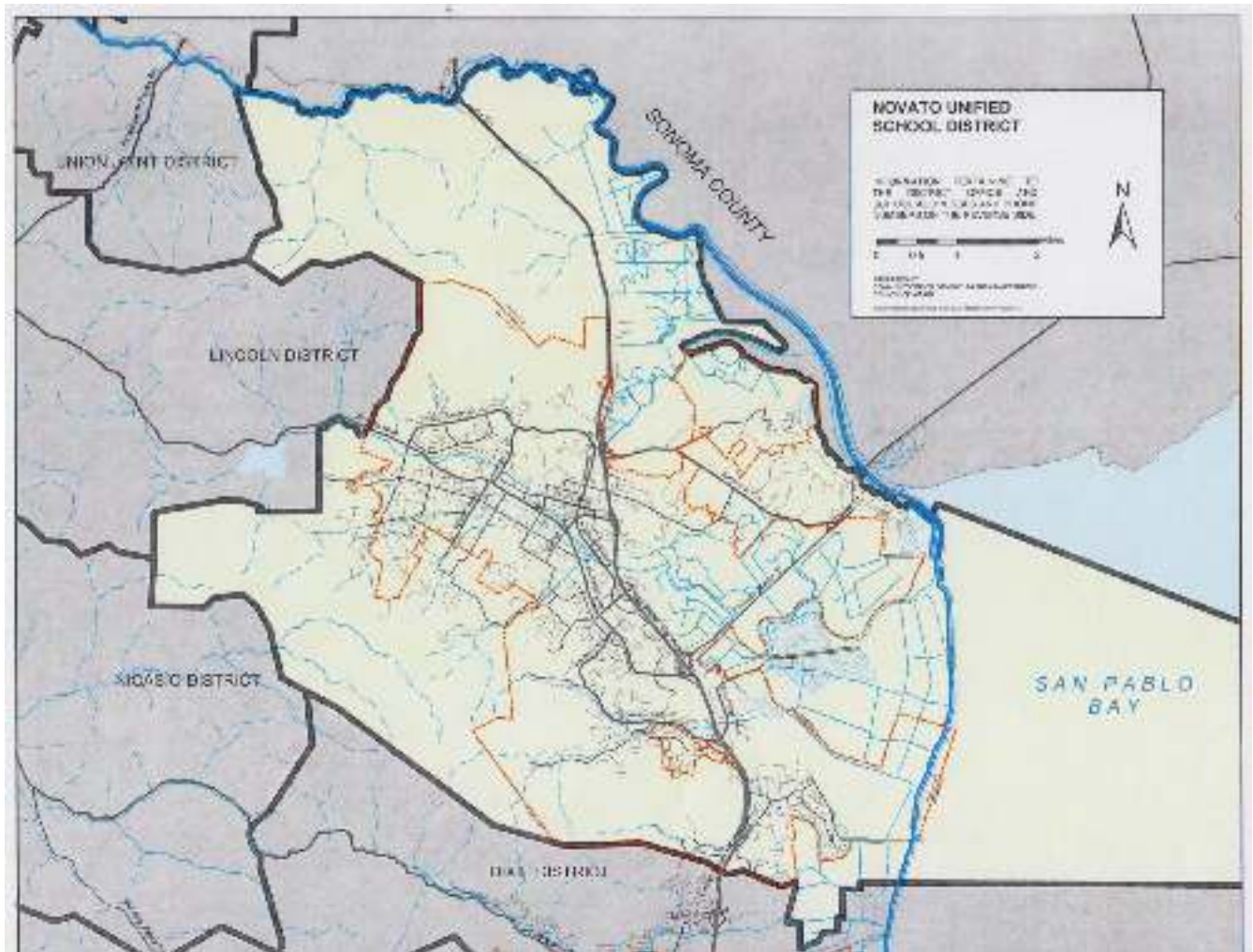
Because all of the factors at work are interrelated, it may be difficult to proceed sequentially from one section to the next, and it may be necessary for the reader to look ahead, as well as to reread prior sections, to obtain a complete understanding for the dynamic forces at work.

BRIEF DESCRIPTION OF THE NOVATO UNIFIED SCHOOL DISTRICT

The Novato Unified School District is a unified TK-12 school district located in Marin County, one of nine counties in the San Francisco Bay Area. The District has 15 schools for various grade levels; in 2017-18 there were 7,856 TK-12 students. The Novato Charter School for grades K-8 is located in the District serving students from Novato and surrounding areas.

The District boundaries and surrounding school districts are shown on the following map.

NUSD Map



2. HISTORICAL ENROLLMENT TRENDS

The following tables present historical enrollments (transitional kindergarten through grade 12) for the past six years. The CALPADS enrollments for 2012-13 through 2016-17 are from the California Department of Education internet site, and the 2017-18 enrollments were provided by the District.

HISTORICAL GRADES TK/K-8 ENROLLMENT (CBEDS/CALPADS)

Grade	2012-13	2013-14	2014-15	2015-16	2016-17	2017-18
TK	43	88	95	89	113	113
K	605/	551/	500/	494/	489/	503/
1	610/-5	566/-39	542/-9	510/10	474/-20	473/-16
2	599/3	605/-5	556/-10	539/-3	504/-6	489/15
3	583/-4	567/-32	599/-6	539/-17	539/0	513/9
4	602/7	587/4	559/-8	601/2	539/0	532/-7
5	620/-1	598/-4	589/2	559/0	599/-2	546/7
Subtotal	3,662/0	3,562/-119	3,440/-31	3,331/-8	3,257/-28	3,169/8
6	571/-14	601/-19	601/3	596/7	539/-5	598/-1
7	575/12	587/16	618/17	608/7	600/7	538/-1
8	524/-3	577/2	594/7	628/10	615/0	597/-3
Subtotal	1,670/-5	1,765/-1	1,813/27	1,832/24	1,754/2	1,733/-5
Total TK-8	5,332/-5	5,327/-120	5,253/-4	5,163/16	5,011/-26	4,902/3
Net Change	60	-5	-74	-90	-152	-109

Enrollment by grade excludes Novato Charter School and Non-Public Schools.

HISTORICAL GRADES 9-12 ENROLLMENT (CBEDS/CALPADS)

Grade	2012-13	2013-14	2014-15	2015-16	2016-17	2017-18
9	616/33	590/66	640/63	676/82	668/38	671/56
10	624/20	629/13	595/5	660/20	672/-5	682/14
11	608/-36	617/-7	623/-6	578/-17	640/7	639/-33
12	581/-30	613/5	606/-11	581/-42	572/0	663/23
Total 9-12	2,429/-13	2,449/77	2,464/52	2,495/43	2,552/40	2,655/60
Net Change	-10	20	15	31	57	103
Total TK-12	7,761	7,776	7,717	7,658	7,563	7,557
Novato Charter	246	259	265	268	270	268
Non-Public	42	43	47	47	36	31
Grand Total	8,049	8,078	8,029	7,973	7,869	7,856
Net Change	50	29	-49	-56	-104	-13

The corresponding cohort changes from the above tables (excluding transitional kindergarten), are summarized in the table below.

ENROLLMENTS AND COHORT CHANGES – HISTORICAL

Year	K-8	K-8 Cohort	9-12	9-12 Cohort
2012-13	5,332	-5	2,429	-13
2013-14	5,327	-120	2,449	77
2014-15	5,253	-4	2,464	52
2015-16	5,163	16	2,495	43
2016-16	5,011	-16	2,552	40
2017-18	4,902	3	2,655	60
Total		-126		259

From the above tables it can be seen that TK-8 enrollment decreased 430 students from the 2012-13 enrollment of 5,332 to 4,902 in 2017-18 while 9-12 enrollment increased 226 students from 2,429 in 2012-13 to 2,655 in 2017-18, for a net loss of 204 students, from 7,761 to 7557 (excluding Novato Charter and Non-Public students). Two of the factors affecting enrollment was the transitional kindergarten (TK) program that begin in 2012-13, which will be discussed in detail later in this report, and the economic downturn that began in 2008.

3. RESIDENTIAL DEVELOPMENT

The City of Novato is subject to new housing allocations under Plan Bay Area, which was prepared in response to 2008's SB 375 calling for a Sustainable Communities Strategy (SCS) throughout California. Joint responsibility for SCS in the Bay Area resides with the Association of Bay Area Governments (ABAG) and the Metropolitan Transportation Commission (MTC). In response to SB 375, Plan Bay Area, the City of Novato's Regional Housing Needs Allocation (RHNA) allocated housing needs for the period 2007-2014 and 2014-2022 as outlined in the table below.

Income (% of Median)	2007-2014	2014-2022
Very Low (0-50%)	275	111
Low (51-80%)	171	65
Moderate (81-120%)	221	72
Above Moderate (120%+)	574	167
Total	1,241	415

The "Housing Element Update 2015-2023" stated:

"Novato's regional housing need for the 2015-2023 planning period is substantially less than the previous planning period. For the 2007-2014 period, Novato's regional housing need allocation was 1,241 units, which is almost three times the current allocation."

According to the Novato "Housing Element Update 2015-2023," 565 units were built or approved during 2007-2014, indicating that "Novato has made adequate provisions to support the development of housing needs at the various income levels to meet its share of the regional housing need."

DEVELOPER FEES

Residential construction subject to a Level 1 developer fee includes new housing units and 500+ square foot additions to existing housing units. Senior housing is subject to the commercial fee. The Fund 25 financial data for 2011-12 through 2015-16 are from District audit reports. The 2016-17 data are estimated actuals.

Fund 25	2011-12	2012-13	2013-14	2014-15	2015-16	2016-17
Beginning Bal.	\$5,281,113	\$1,096,936	\$683,329	\$186,674	\$325,521	\$248,477
Revenues	2,653,589	671,718	221,642	248,203	88,192	100,500
Expenditures	6,577,388	1,696,502	118,297	109,356	165,236	173,063
Transfers (Net)		611,177		0	0	0
Ending Bal.	\$1,096,936	\$683,329	\$186,674	\$325,521	\$248,477	\$175,914

If Novato meets the 2014-2022 housing allocation, approximately 60 new housing units annually would be built over the seven-year period. Assuming an average 1,500 square feet per unit (SF and MF), 90,000 square feet of space would be built, which would be subject to developer fee collections in excess of \$300,000. Because this is less than the developer fee collections of the recent past, it is unlikely that 60 new units annually would be achieved in the near term.

NOVATO AVAILABLE LAND AND FUTURE HOUSING

The “Table 46: Available Land Inventory” and “Appendix B: Available Land Inventory Maps for Table 46” in the Novato Housing Element Update 2015-2013 identified 66 sites with a “Realistic Capacity” for 627 housing units that will be the source of future units to be built. The “City of Novato Current Planning Projects Under Review” dated October 2017 identified several residential housing projects listed below (excluding senior housing and various 1-unit SF projects):

Atherton Place	50 TH
Bahia Heights	9 SF
Bahia River View	7 SF
Hamilton Square	31 TH
Landing Court	34 MF

COHORT MOVEMENT

The movement of student enrollment from one grade one year to the next higher grade the following year (the cohort) is the best indicator of the impact of all factors that impact enrollment, including residential construction. Based on the above residential discussion, it may be concluded that residential development is having minimum impact. Transitional kindergarten and cohort changes have the greatest impact. Cohort changes occur when families with children move into and out of the District, attend private and charter schools, and inter-district transfers occur. As reported in Section 2, Historical Enrollment Trends, the K-8 cohort change was minimal, indicating that there was no major impact from new housing units.

CONCLUSION

Based on the above analysis, it is concluded that students from new housing units have already been accounted for in the historical enrollment and cohort factors. The projected enrollments will therefore be based on the historical transitional kindergarten and cohort factors.

4. KINDERGARTEN PROJECTIONS

BIRTHS AND KINDERGARTEN TRENDS

Kindergarten projections are more difficult to establish than projections for other grades because historical patterns may be more difficult to establish and, beyond a four to five-year time frame, the children have not yet been born. It is, therefore, necessary to project kindergarten by establishing a relationship between births (historical and projected) and kindergarten enrollments five years later. By correlating births and kindergarten pupils five-years later, a reasonable projection of the future preschool age population and TK/K pupils can be made.

There are three ZIP codes within the District: 94945, 94947 and 94949. A ZIP code map graphically presents their location. The elementary schools located within each ZIP code are the following:

94945

Olive
San Ramon

94947

Lu Sutton
Lynwood
Pleasant Valley
Rancho

94949

Hamilton
Loma Verde

Novato Charter School, a K-8 school, draws students from throughout the District and region. Novato Charter has transitional and regular kindergarten pupils, but is not a part of this study.

Historical birth data by ZIP code for 2001 through 2012, taken from the “Historical births through 2013, California Department of Public Health, Center for Health Statistics and Informatics Vital Statistics Unit” website, is presented below. Also presented are birth data for Marin County taken from the “California Department of Finance, Demographic Research Unit” website.

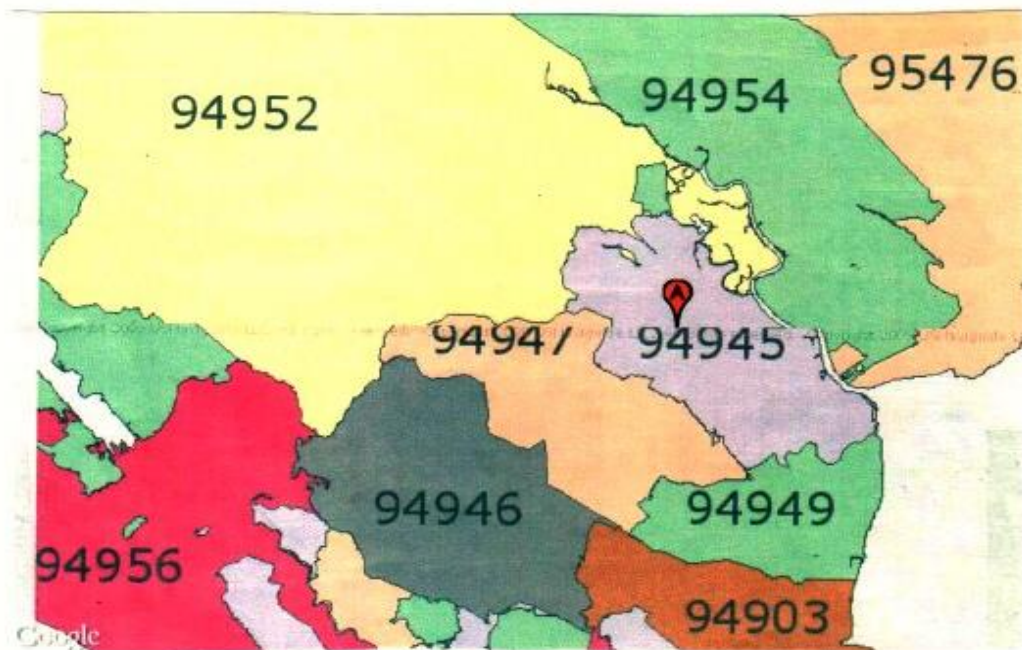
Year	94945	94947	94949	Total	County
Historical					
2001	151	302	220	673	2,865
2002	156	255	210	621	2,772
2003	161	279	249	689	2,830
2004	174	271	233	678	2,792
2005	165	280	255	700	2,785
2006	158	266	263	687	2,734
2007	172	271	228	671	2,819
2008	158	265	251	674	2,719
2009	155	237	187	579	2,495
2010	139	237	178	554	2,368
2011	163	189	187	539	2,385
2012	160	224	159	543	2,306
2013					2,320
2014					2,403
2015					2,288

Projected	94945	94947	94949	Total	County
2016					2,307
2017					2,239
2018					2,174
2019					2,183
2020					2,207
2021					2,183
2022					2,132

From the above table, it can be seen that the number of births in each ZIP code was relatively stable for the years 2003 through 2008, but beginning in 2009 the number of births dropped sharply – a loss of 95 from 2008 to 2009 – with decreasing numbers of births also occurring in 2010 through 2012, the last year that data were available. Most of the decline occurred in ZIP code 94949, but ZIP code 94947 also experienced fewer births.

Analysis of historical births in Marin County in the above table reveals a similar trend. For the County as a whole, there was a decrease of 221 births from 2008 to 2009 and more decreases thereafter. From a high of 2,819 births in 2007, births decreased 531 to a low of 2,288 in 2015.

Based on the above data and analysis, there is no evidence that the birth data are incorrect, and it will therefore be assumed that birth data as presented will be a valid basis for projecting TK/K enrollment. The birth data decrease to a lower level is significant, however, as actual 2012 births correlate to 2017-18 TK/K enrollment, the last year that actual birth/K data are available. One possible explanation for the sudden decrease in births is the economic downturn that occurred in 2008, resulting in an exodus of population from the District and County and/or decisions to temporarily or permanently reduce the number of births that had been previously planned.



TRANSITIONAL KINDERGARTEN AND FIRST GRADE

The State of California enacted Senate Bill 1381, the “Kindergarten Readiness Act,” in 2010, approved by the Governor on September 30, 2010. The bill established a voluntary publicly funded transitional kindergarten (TK) program, defined as the first year of a two-year kindergarten program. The provisions of SB 1381 moved the previous deadline of December 2 for five-year-old children to be admitted to kindergarten and for six-year-olds to be admitted to the first grade back one month each year for three years beginning with the 2012-13 school year, as shown in the table below.

School Year	5-Year-Olds’ Birthday	6-Year-Olds’ Birthday
2011-12	December 2	December 2
2012-13	November 1	November 1
2013-14	October 1	October 1
2014-15	September 1	September 1

Children whose fifth birthdays met the above criteria could be admitted into a TK program; children whose sixth birthdays met the above criteria could be admitted into the first grade.

SB 1381 (Education Code Section 46300 (g)) also created provisions for a pupil who completed one year in a TK program to attend one additional year in a regular kindergarten program upon agreement by the pupil’s parent or guardian. Additionally, SB 1381 (Education Code Section 48000) permits a child who attains the age of five years at any time during the school year to be admitted to a kindergarten program upon approval of the child’s parent or guardian and the governing board. SB381 (Ed. Code Section 48010) makes similar provisions for a child who attains the age of six years at any time during the school year to be admitted to the first grade.

The Novato Unified School District established a TK program in 2011-12 at Loma Verde only, in 2012-13 at all schools for children who had their fifth birthday during the period November 1 through December 2, and, in 2013-14, extended it to the period October 1 through December 2. The District further extended the TK program for the period September 1 through December 2 in 2014-15 and thereafter. As shown in the following table, the transitional kindergarten program was not fully implemented in the District until 2015-16.

Grade	2011-12	2012-13	2013-14	2014-15	2015-16	2016-17	2017-18
TK1	0	1	2	3	3	3	3
TK2	0	0	1	2	3	3	3
1	0	1	2	3	3	3	3

For the years that the District operated a TK program, enrollments in kindergarten and first grade for 2012-13 through 2016-17 are summarized in the table below. To distinguish between the first year TK program and second year that TK pupils continued in a kindergarten program, the first year is labeled TK1 and the second year is labeled TK2, with the understanding that TK2 pupils are actually enrolled in the regular kindergarten program. (Note: TK1 enrollments are actuals, but TK2 is based on the assumption that all TK1 pupils advanced to TK2 for the second year of the program.)

Grade	2011-12	2012-13	2013-14	2014-15	2015-16	2016-17	2017-18
TK1	0	43	88	95	89	113	113
TK2	0	0	43	88	95	89	113
TK2/K	615	605	551	500	494	489	503
1	596	610	566	542	510	474	473

SB 1381 contains a number of provisions, as discussed above, that are optional and parents may not fully understand their options in enrolling their children in public school. Those provisions of law could significantly impact enrollments in TK, K and the 1st grade, with subsequent impact on higher grades in the following years. Because SB 1381 has only been fully implemented in the District since 2012-13, it is cautioned that actual enrollments may deviate from projections until the provisions of SB 1381 stabilize in the coming years.

PROJECTIONS

Kindergarten projections were prepared by correlating total zip code births to District kindergarten enrollments five years later and then by using the most recent percentage to prepare three years of projections – the maximum possible using zip code births. (Note: 2015-16 was the first year that TK1, TK2 and K enrollments were fully implemented; therefore, the higher correlation percentages.) The following table below presents kindergarten projections based on correlations.

BIRTHS AND KINDERGARTEN TRENDS ZIP CODES AND NOVATO SCHOOL DISTRICT

Birth Year	Births	K Year	TK/K Enrollment	Correlation
2006	687	2011	615	89.5%
2007	671	2012	648	96.6%
2008	674	2013	639	94.8%
2009	579	2014	595	102.8%
2010	554	2015	583	105.2%
2011	539	2016	602	111.7%
2012	543	2017	616	113.4%

The next step was to correlate Marin County births to District kindergarten enrollments, including the three-year projections prepared with zip code data, and then prepare projections based on the birth trend. The table below shows the results of this correlation and kindergarten projections. Based on county birth trends, correlations in the area zip codes, cohort growth, and the steady rise in kindergarten enrollment, future kindergarten enrollments are projected as follows:

**BIRTHS AND KINDERGARTEN TRENDS
MARIN COUNTY AND NOVATO
SCHOOL DISTRICT**

Birth Year	Births	K Year	TK/K Enrollment	Correlation
2006	2,734	2011	615	22.5%
2007	2,819	2012	648	23.0%
2008	2,719	2013	639	23.5%
2009	2,495	2014	595	23.8%
2010	2,368	2015	583	24.6%
2011	2,385	2016	602	25.2%
2012	2,306	2017	616	26.7%
Actual		Projections	Projections	2017 %
2013	2,320	2018	619	26.7%
2014	2,403	2019	642	26.7%
2015	2,288	2020	611	26.7%
Projections		Projections	Projections	2017 %
2016	2,307	2021	616	26.7%
2017	2,239	2022	598	26.7%
2018	2,174	2023	580	26.7%
2019	2,183	2024	583	26.7%
2020	2,207	2025	589	26.7%
2021	2,183	2026	583	26.7%
2022	2,132	2027	569	26.7%

A 2014 study revealed that average birth percentages by month for ZIP codes 94945, 94947 and 94949 were the following, which would be expected for 3 of 12 months of births:

September	8.4%
October	8.8%
November	<u>7.6%</u>
Total	24.8%

Total births for the three ZIP codes correlated to District TK1 enrollments were the following:

Births			TK1 Eligible		TK1 Actual	
Year	Total	Mos. 9-11	Year	Number	Year	Enrollment
2011	539	134	2016-17	134	2016-17	113
2012	543	135	2017-18	135	2017-18	113

It is therefore concluded that about 84 percent of children eligible for TK1 (113 out of 134/135) actually enrolled in public TK1. The other 16 percent of children eligible may be kept at home or be enrolled in private or charter schools, such as Novato Charter, that had 20 TK1 pupils in 2017-18.

Based on the above data, it is reasonable to expect TK1 enrollment to maintain a stable percentage in the future, as follows:

**BIRTHS AND KINDERGARTEN TRENDS
MARIN COUNTY AND NOVATO
SCHOOL DISTRICT**

K Year	TK/K Enrollment	TK1 Enroll (%)
Actual	Actual	Actual
2016	602	113 (18.8%)
2017	616	113 (18.3%)
Projections	Projections	(Avg. 18.5 %)
2018	619	115
2019	642	119
2020	611	113
2021	616	114
2022	598	111
2023	580	107
2024	583	108
2025	589	109
2026	583	108
2027	569	105

Projected District TK1, TK2 and K enrollments for 2018-19 through 2022-23 are presented in the table below. (Note: TK1 enrollments are based on the extension of 2015-16 and 2016-17 actuals and TK2 is based on the assumption that all TK1 pupils will advance to TK2 for the second year of the program.)

Grade	2018-19	2019-20	2020-21	2021-22	2022-23
TK1	115	119	113	114	111
TK2/K	504	523	498	502	487
Total	619	642	611	616	598

Grade	2023-24	2024-25	2025-26	2026-27	2027-28
TK1	107	108	109	108	105
TK2/K	473	475	480	475	464
Total	580	583	589	583	569

5. DISTRICT ENROLLMENT PROJECTIONS

5.1 OVERVIEW

After kindergarten projections and the assumptions used to derive them have been prepared, projecting enrollment becomes an analytical task. By distributing the cohort growth factors throughout the grades based on historical trends, enrollment projections are derived. The resultant projections are presented in the tables below.

5.2 ASSUMPTIONS

The primary assumptions used in the preparation of the enrollment projections are explained below. It is cautioned that these assumptions may differ from events that unfold. It is important to monitor changing conditions and to adjust the assumptions accordingly, revising projections periodically and as significant new information arises.

1. Births/Kindergarten and Transitional Kindergarten

It was assumed that the birth trend would result in a correlated kindergarten enrollment five years later for the District. Historically, Marin County births descended from their high point of 2,865 in 2001 and dropped in most years to a low of 2,288 in 2015. County births are expected to remain fairly level, but declining to a new low of 2,132 by 2022.

Transitional kindergarten (TK) has moved the deadline for kindergarten enrollment earlier beginning in 2012-13, resulting in shifts in enrollment between kindergarten and first grade students as some students experience a two-year kindergarten (TK2) program. The TK program has now been fully implemented, and future TK1 and TK2 students should stabilize.

2. Calculation of K-7/1-8 Cohort Projection Numbers

For the District, the calculation of K-7/1-8 cohort numbers provides the best indicator of net migration, which is the combined effect of in-migration, out-migration, residential growth, changes in vacancy rates, movement of students to/from private/charter schools, county programs, and other factors. The cohort has increased steadily during the past decade. This growth has been offset by smaller kindergarten classes replacing larger graduating eighth grade classes.

The table below provides the cohort factors, based on the three most recent years, used to determine cohort changes for each grade for the purposes of projecting enrollment in the District.

Grade Cohort Movement	2014-15	2015-16	2016-17	2017-18	Average
TK2/K-1	-9	10	-20	-16	-9
1-2	-10	-3	-6	15	2
2-3	-6	-17	0	9	-2
3-4	-8	2	0	-7	-2
4-5	2	0	-2	7	2
5-6	3	7	-5	-1	1
6-7	17	7	7	-1	4
7-8	7	10	0	-3	2
Total TK2/K -8	-4	16	-26	3	-2
8-9	63	82	38	56	58
9-10	5	20	-5	14	10
10-11	-6	-17	7	-33	-14
11-12	-11	-42	0	23	-6
Total 8-12	52	43	40	60	48

3. Residential Development

Residential development within Novato is subject to new housing allocations under Plan Bay Area. From the analysis within this report, it appears that minimal residential construction has occurred during the recent past, and residential construction is expected to continue to be minimal in the future. Because of the past/future trend, it is assumed that new students from new residential construction have already been incorporated into the overall projections.

4. Private School/Charter School Enrollment

Changes in private and charter school enrollments can impact public school enrollments. The Novato Charter School located in the District has had a stable enrollment in the recent past, and is expected to remain stable in the future, so it appears that charter school enrollment will have no meaningful impact on the District's enrollment.

5.3 PROJECTIONS

The District's projections indicate a continuation of the declining enrollment trend during the next ten years. The recent high occurred in 2013-14 with 8,078 total K-12 students, including Novato Charter and Non-Public Schools. The enrollment then declined to 7,856 in 2017-18. The projections in the following tables indicate that enrollment will decline to 6,934 over the coming decade. This decline is due to smaller enrollments in the lower grades advancing in subsequent years.

PROJECTED GRADES TK/K-8 ENROLLMENT (CBEDS/CALPADS)

Grade	3-Yr Cohort Change	2018-19	2019-20	2020-21	2021-22	2022-23
TK1		115	119	113	114	111
TK2/K		504	523	498	502	487
1	-9	494	495	514	489	493
2	2	475	496	497	516	491
3	-2	487	473	494	495	514
4	-2	511	485	471	492	493
5	2	534	513	487	473	494
Subtotal	-9	3,120	3,104	3,074	3,081	3,083
6	1	547	535	514	488	474
7	4	602	551	539	518	492
8	2	540	604	553	541	520
Subtotal	7	1,689	1,690	1,606	1,547	1,486
Total TK-8	-2	4,809	4,794	4,680	4,628	4,569
Net Change		-93	-15	-114	-52	-59

Enrollment by grade excludes Novato Charter School and Non-Public Schools.

PROJECTED GRADES 9-12 ENROLLMENT (CBEDS/CALPADS)

Grade	3-Yr Cohort Change	2018-19	2019-20	2020-21	2021-22	2022-23
9	58	655	598	662	611	599
10	10	681	665	608	672	621
11	-14	668	667	651	594	658
12	-6	633	662	661	645	588
Total 9-12	48	2,637	2,592	2,582	2,522	2,466
Net Change		-18	-45	-10	-60	-56
Total TK-12		7,446	7,386	7,262	7,150	7,035
Novato Charter		268	268	268	268	268
Non-Public		38	38	38	38	38
Grand Total		7,752	7,692	7,568	7,456	7,341
Net Change		-104	-60	-124	-112	-115

Enrollment by grade excludes Novato Charter School and Non-Public Schools.

PROJECTED GRADES TK/K-8 ENROLLMENT
(CBEDS/CALPADS)

Grade	3-Yr Cohort Change	2023-24	2024-25	2025-26	2026-27	2027-28
TK1		107	108	109	108	105
TK2/K		473	475	480	475	464
1	-9	478	464	466	471	466
2	2	495	480	466	468	473
3	-2	489	493	478	464	466
4	-2	512	487	491	476	462
5	2	495	514	489	493	478
Subtotal	-9	3,049	3,021	2,979	2,955	2,914
6	1	495	496	515	490	494
7	4	478	499	500	519	494
8	2	494	480	501	502	521
Subtotal	7	1,467	1,475	1,516	1,511	1,509
Total TK-8	-2	4,516	4,496	4,495	4,466	4,423
Net Change		-53	-20	-1	-29	-43

Enrollment by grade excludes Novato Charter School and Non-Public Schools.

PROJECTED GRADES 9-12 ENROLLMENT
(CBEDS/CALPADS)

Grade	3-Yr Cohort Change	2023-24	2024-25	2025-26	2026-27	2027-28
9	58	578	552	538	559	560
10	10	609	588	562	548	569
11	-14	607	595	574	548	534
12	-6	652	601	589	583	542
Total 9-12	48	2,446	2,336	2,263	2,238	2,205
Net Change		-20	-110	-73	-25	-33
Total TK-12		6,962	6,832	6,758	6,704	6,628
Novato Charter		268	268	268	268	268
Non-Public		38	38	38	38	38
Grand Total		7,268	7,138	7,064	7,010	6,934
Net Change		-73	-130	-74	-54	-76

Enrollment by grade excludes Novato Charter School and Non-Public Schools.

6. SCHOOL-LEVEL ENROLLMENT PROJECTIONS

6.1 OVERVIEW

All school-by-school projections are based on current attendance areas and grade configurations. Any boundary adjustments would impact the enrollments of existing schools. Also, any change in the grades assigned to schools would impact enrollments. Projections were prepared on a school-by-school basis by using historical enrollments, cohort movements, and birth/kindergarten data.

6.2 HISTORICAL ENROLLMENT

Historical enrollments are presented below.

FIVE-YEAR HISTORICAL ENROLLMENT BY SCHOOL

School	2013-14	2014-15	2015-16	2016-17	2017-18
Loma Verde Elementary (K-5)	437	425	390	404	415
Lu Sutton Elementary (K-5)	386	347	362	365	365
Lynwood Elementary (K-5)	357	343	327	327	336
Olive Elementary (K-5)	368	337	342	323	312
Pleasant Valley Elementary (K-5)	499	526	499	499	462
Rancho Elementary (K-5)	498	485	440	397	368
San Ramon Elementary (K-5)	469	474	493	492	476
Hamilton Meadow Park (K-8)	728	686	661	626	612
San Jose Intermediate (6-8)	717	745	794	765	726
Sinaloa Middle (6-8)	860	880	849	805	826
Novato High (9-12)	1,358	1,322	1,296	1,378	1,441
San Marin High (9-12)	972	1,020	1,076	1,051	1,100
Marin Oaks High (9-12) (Contin.)	71	64	72	70	67
Nexus Academy (K-12)	5	3	4	5	3
Nova Education Center (K-12)	51	60	53	56	48
Total District Only	7,776	7,717	7,658	7,563	7,557
Novato Charter (K-8)	259	265	268	270	268
Non-Public Non-Sectarian (K-12)	43	47	47	36	31
Total Enrollment	8,078	8,029	7,973	7,869	7,856
Net Change	29	-49	-56	-104	-13

FIVE-YEAR HISTORICAL TK1 ENROLLMENT BY SCHOOL

School	2013-14	2014-15	2015-16	2016-17	2017-18
Loma Verde Elementary (K-5)	23	19	10	19	19
Lu Sutton Elementary (K-5)	7	10	9	11	10
Lynwood Elementary (K-5)	7	9	8	12	7
Olive Elementary (K-5)	11	10	11	9	9
Pleasant Valley Elementary (K-5)	14	13	11	23	17
Rancho Elementary (K-5)	10	11	12	6	12
San Ramon Elementary (K-5)	10	17	20	29	28
Hamilton Meadow Park (K-8)	6	6	8	4	11
Total Enrollment	88	95	89	113	113

Loma Verde – TK/K-5

Grade	Actual 2013-14	Actual 2014-15	Actual 2015-16	Actual 2016-17	Actual 2017-18
TK1	23	19	10	19	19
TK2/K	84	63	66	73	66
1	72	78/-6	58/-5	55/-11	72/-1
2	60	68/-4	72/-6	67/9	57/2
3	64	54/-6	65/-3	68/-4	71/4
4	76	64/0	54/0	67/2	70/2
5	58	79/3	65/1	55/1	60/-7
Subtotal	437	425/-13	390/-13	404/-3	415/0
Increase (Decrease)		-12	-35	14	11

Lu Sutton – TK/K-5

Grade	Actual 2013-14	Actual 2014-15	Actual 2015-16	Actual 2016-17	Actual 2017-18
TK1	7	10	9	11	10
TK2/K	62	60	71	67	61
1	63	57/-5	64/4	61/-10	66/-1
2	57	52/-11	58/1	63/-1	59/-2
3	55	58/1	52/0	58/0	63/0
4	71	46/-9	57/-1	48/-4	55/-3
5	71	64/-7	51/5	57/0	51/3
Subtotal	386	347/-31	362/9	365/-15	365/-3
Increase (Decrease)		-39	15	-31	0

Lynwood – TK/K-5

Grade	Actual 2013-14	Actual 2014-15	Actual 2015-16	Actual 2016-17	Actual 2017-18
TK1	7	9	8	12	7
TK2/K	47	47	49	47	51
1	55	46/-1	45/-2	41/-8	49/2
2	53	52/-3	42/-4	41/-4	44/3
3	52	52/-1	49/-3	46/4	44/3
4	69	66/14	71/19	67/18	69/23
5	74	71/2	63/-3	73/2	72/5
Subtotal	357	343/11	327/7	327/12	336/36
Increase (Decrease)		-14	-16	0	9

Olive – TK/K-5

Grade	Actual 2013-14	Actual 2014-15	Actual 2015-16	Actual 2016-17	Actual 2017-18
TK1	11	10	11	9	9
TK2/K	48	50	51	45	60
1	53	46/-2	49/-1	58/7	43/-2
2	88	51/-2	51/5	43/-6	57/-1
3	57	78/-10	50/-1	49/-2	49/6
4	51	55/-2	75/-3	51/1	46/-3
5	60	47/-4	55/0	68/-7	48/-3
Subtotal	368	337/-20	342/0	323/-7	312/-3
Increase (Decrease)		-31	5	-19	-11

Pleasant Valley – TK/K-5

Grade	Actual 2013-14	Actual 2014-15	Actual 2015-16	Actual 2016-17	Actual 2017-18
TK1	14	13	11	23	17
TK2/K	77	86	59	62	65
1	81	78/1	91/5	65/6	62/0
2	88	85/4	82/4	92/1	77/12
3	83	90/2	82/-3	87/5	93/1
4	88	81/-2	90/0	77/-5	72/-15
5	68	93/5	84/3	93/3	76/-1
Subtotal	499	526/10	499/9	499/10	462/-3
Increase (Decrease)		27	-27	0	-37

Rancho – TK/K-5

Grade	Actual 2013-14	Actual 2014-15	Actual 2015-16	Actual 2016-17	Actual 2017-18
TK1	10	11	12	6	12
TK2/K	71	66	42	58	51
1	77	75/4	73/7	43/1	56/-2
2	86	84/7	68/-7	68/-5	47/4
3	80	90/4	82/-2	67/-1	64/-4
4	81	79/-1	84/-6	75/-7	61/-6
5	93	80/-1	79/0	80/-4	77/2
Subtotal	498	485/13	440/-8	397/-16	368/-6
Increase (Decrease)		-13	-45	-43	-29

San Ramon – TK/K-5

Grade	Actual 2013-14	Actual 2014-15	Actual 2015-16	Actual 2016-17	Actual 2017-18
TK1	10	17	20	29	28
TK2/K	69	69	86	68	70
1	83	71/2	71/2	85/-1	69/1
2	79	82/-1	71/0	69/-2	82/-3
3	82	85/6	78/-4	71/0	75/6
4	70	78/-4	87/2	78/0	68/-3
5	76	72/2	80/2	92/5	84/6
Subtotal	469	474/5	493/2	492/2	476/7
Increase (Decrease)		5	19	-1	-16

Hamilton Meadow Park – TK/K-8

Grade	Actual 2013-14	Actual 2014-15	Actual 2015-16	Actual 2016-17	Actual 2017-18
TK1	6	6	8	4	11
TK2/K	93	59	70	69	79
1	82	91/-2	59/0	66/-4	56/-13
2	94	82/0	95/4	61/2	66/0
3	94	92/-2	81/-1	93/-2	54/-7
4	81	90/-4	83/-9	76/-5	91/-2
5	97	83/2	82/-8	81/-2	78/2
6	66	60/-37	63/-20	60/-22	63/-18
7	58	62/-4	57/-3	62/-1	56/-4
8	57	61/3	63/1	54/-3	58/-4
Subtotal	728	686/-44	661/-36	626/-37	612/-46
Increase (Decrease)		-42	-25	-35	-14

San Jose Intermediate – 6-8

Grade	Actual 2013-14	Actual 2014-15	Actual 2015-16	Actual 2016-17	Actual 2017-18
6	254	262	259	220	242
7	222	258/4	273/11	263/4	219/-1
8	241	225/3	262/4	282/9	265/2
Subtotal	717	745/	794/	765/	726/
Increase (Decrease)		28	49	-29	-39

Sinaloa Middle – 6-8

Grade	Actual 2013-14	Actual 2014-15	Actual 2015-16	Actual 2016-17	Actual 2017-18
6	281	279	273	259	293
7	307	298/17	278/-1	273/0	261/2
8	272	303/-4	298/0	273/-5	272/-1
Subtotal	860	880/	849/	805/	826/
Increase (Decrease)		20	-31	-44	-15

Novato High – 9-12

Grade	Actual 2013-14	Actual 2014-15	Actual 2015-16	Actual 2016-17	Actual 2017-18
9	343	355	362	401	382
10	327	338/-5	352/-3	360/-2	388/-13
11	351	310/-17	306/-32	321/-31	341/-19
12	337	319/-32	276/-34	296/-10	330/9
Subtotal	1,358	1,322/	1,296/	1,378/	1,441/
Increase (Decrease)		-36	-26	82	-15

San Marin High – 9-12

Grade	Actual 2013-14	Actual 2014-15	Actual 2015-16	Actual 2016-17	Actual 2017-18
9	241	277	301	258	284
10	278	243/2	278/1	286/-15	269/11
11	208	276/-2	239/-4	273/-5	278/-8
12	205	224/16	258/-18	234/-5	269/-4
Subtotal	932	1,020/	1,076/	1,051/	1,100/
Increase (Decrease)		88	56	-25	49

Marin Oaks High – 9-12 (Continuation)

Grade	Actual 2013-14	Actual 2014-15	Actual 2015-16	Actual 2016-17	Actual 2017-18
9	6	4	8	4	3
10	16	9/3	21/17	17/9	19/15
11	20	20/4	18/9	19/-2	12/-5
12	29	31/11	25/5	30/12	33/14
Subtotal	71	64/	72/	70/	67/
Increase (Decrease)		-7	8	-2	-3

Nexus Academy

Grade	Actual 2013-14	Actual 2014-15	Actual 2015-16	Actual 2016-17	Actual 2017-18
7				2	1
8	5	3	4	3	2
Subtotal	5	3	4	5	3
Increase (Decrease)		-2	1	1	-2

Nova Education Center

Grade	Actual 2013-14	Actual 2014-15	Actual 2015-16	Actual 2016-17	Actual 2017-18
5	1				
6			1		
7					1
8	2	2	1	3	
9		4	5	5	2
10	8	5	9	9	6
11	20	17	15	27	8
12	20	32	22	12	31
Subtotal	51	60	53	56	48
Increase (Decrease)		9	-7	3	-8

Novato Charter – K-8

Grade	Actual 2013-14	Actual 2014-15	Actual 2015-16	Actual 2016-17	Actual 2017-18
TK1	21	24	0	0	20
TK2/K	28	25	49	48	28
1	28	28/0	29/4	28/-21	28/-20
2	28	28/0	28/0	29/0	28/0
3	28	28/0	28/0	28/0	29/0
4	28	28/0	28/0	28/0	28/0
5	28	28/0	28/0	28/0	28/0
6	26	26/-2	27/-1	28/0	26/-2
7	24	27/1	26/0	26/-1	27/-1
8	20	23/-1	25/-2	27/-1	26/0
Subtotal	259	265/-2	268/1	270/-21	268/-23
Increase (Decrease)		6	3	2	-2

District Non-Public Non-Sectarian Schools – K-12

Grade	Actual 2013-14	Actual 2014-15	Actual 2015-16	Actual 2016-17	Actual 2017-18
K					
1				1	
2	1				1
3		3	1		
4	5	1	2	1	
5	3	6	2	2	1
6	3	3	6	1	3
7	4	4	5	5	2
8	8	6	4	4	3
9	4	6	6	6	4
10	5	4	6	5	8
11	2	5	5	5	4
12	8	9	10	6	5
Subtotal	43	47	47	36	31
Increase (Decrease)		4	0	-11	-5

6.3 PROJECTED ENROLLMENT

The projected enrollments presented below summarize the detailed school-by-school projections in the tables that follow. The Total Schools Enrollment projections were compared to the Total District Enrollments projections, which are considered to be the more accurate projections. The comparison shows a minor difference for the five years of projection, indicating that the school-by-school projections are reasonable. It is cautioned, however, that District decisions regarding the assignment of transitional and regular kindergarten pupils, higher grade student assignments and intra-district transfers, could result in deviations from the projections.

FIVE-YEAR PROJECTED ENROLLMENT BY SCHOOL

School	2018-19	2019-20	2020-21	2021-22	2022-23
Loma Verde Elementary (K-5)	416	411	401	406	392
Lu Sutton Elementary (K-5)	372	375	368	366	355
Lynwood Elementary (K-5)	331	330	328	329	324
Olive Elementary (K-5)	316	328	334	333	346
Pleasant Valley Elementary (K-5)	456	455	435	431	435
Rancho Elementary (K-5)	337	328	318	338	329
San Ramon Elementary (K-5)	467	471	464	450	449
Hamilton Meadow Park (K-8)	595	572	581	584	590
San Jose Intermediate (6-8)	695	700	671	646	621
Sinaloa Middle (6-8)	813	807	758	730	701
Novato High (9-12)	1,445	1,416	1,405	1,376	1,343
San Marin High (9-12)	1,083	1,043	1,044	1,010	987
Marin Oaks High (9-12) (Contin.)	70	70	70	70	70
Nexus Academy (K-12)	4	4	4	4	4
Nova Education Center (K-12)	52	52	52	52	52
Total District Only	7,452	7,362	7,233	7,125	6,998
Novato Charter (K-8)	268	268	268	268	268
Non-Public Non-Sectarian (K-12)	38	38	38	38	38
Total Schools Enrollment	7,758	7,668	7,539	7,431	7,304
Net Change	-98	-90	-129	-108	-127
Total District Enrollment	7,752	7,692	7,568	7,456	7,341
Difference	6	-24	-29	-25	-37

The projected TK1 and TK2/K enrollments presented below assign the total projections to their respective schools based on the trends of the recent past. As stated above, it is cautioned that District decisions regarding the assignment of transitional and regular kindergarten pupils could result in deviations from the projections. The detailed school-by-school projections show the 3-year cohort averages used to make projections.

FIVE-YEAR PROJECTED TK1 ENROLLMENT BY SCHOOL

School	2018-19	2019-20	2020-21	2021-22	2022-23
Loma Verde Elementary (K-5)	19	19	19	19	19
Lu Sutton Elementary (K-5)	10	11	10	10	9
Lynwood Elementary (K-5)	8	9	8	8	7
Olive Elementary (K-5)	9	10	9	9	9
Pleasant Valley Elementary (K-5)	17	18	17	17	17
Rancho Elementary (K-5)	12	12	12	12	12
San Ramon Elementary (K-5)	29	29	28	28	28
Hamilton Meadow Park (K-8)	11	11	11	11	10
Total Enrollment	115	119	113	114	111

FIVE-YEAR PROJECTED TK2/K ENROLLMENT BY SCHOOL

School	2018-19	2019-20	2020-21	2021-22	2022-23
Loma Verde Elementary (K-5)	66	68	65	65	63
Lu Sutton Elementary (K-5)	61	63	60	60	58
Lynwood Elementary (K-5)	48	51	48	49	48
Olive Elementary (K-5)	60	62	59	60	58
Pleasant Valley Elementary (K-5)	65	67	64	64	62
Rancho Elementary (K-5)	55	60	56	57	55
San Ramon Elementary (K-5)	70	72	69	69	67
Hamilton Meadow Park (K-8)	79	80	77	78	76
Total Enrollment	504	523	498	502	487

Loma Verde – TK/K-5

Grade	Proj. 2018-19	Proj. 2019-20	Proj. 2020-21	Proj. 2021-22	Proj. 2022-23
TK1	19	19	19	19	19
TK2/K	66	68	65	65	63
1	61/-5	61	63	60	60
2	74/ 2	63	63	65	62
3	56/-1	73	62	62	64
4	72/ 1	57	74	63	63
5	68/-2	70	55	72	61
Subtotal	416/-5	411	401	406	392
Increase (Decrease)	1	-5	-10	5	-14

Lu Sutton – TK/K-5

Grade	Proj. 2018-19	Proj. 2019-20	Proj. 2020-21	Proj. 2021-22	Proj. 2022-23
TK1	10	11	10	10	9
TK2/K	61	63	60	60	58
1	59/-2	59	61	58	58
2	65/-1	58	58	60	57
3	59/0	65	58	58	60
4	60/-3	56	62	55	55
5	58/3	63	59	65	58
Subtotal	372/-3	375	368	366	355
Increase (Decrease)	7	3	-7	-2	-11

Lynwood – TK/K-5

Grade	Proj. 2018-19	Proj. 2019-20	Proj. 2020-21	Proj. 2021-22	Proj. 2022-23
TK1	8	9	7	8	7
TK2/K	48	51	48	49	48
1	48/-3	45	48	45	46
2	47/-2	46	43	46	43
3	45/1	48	47	44	47
4	64/20	65	68	67	64
5	71/2	66	67	70	69
Subtotal	331/18	330	328	329	324
Increase (Decrease)	-5	-1	-2	1	-5

Olive – TK/K-5

Grade	Proj. 2018-19	Proj. 2019-20	Proj. 2020-21	Proj. 2021-22	Proj. 2022-23
TK1	9	10	9	9	9
TK2/K	60	62	59	60	58
1	58/-2	58	60	57	58
2	41/-2	56	56	58	55
3	58/1	42	57	57	59
4	47/-2	56	40	55	55
5	43/-3	44	53	37	52
Subtotal	316/-8	328	334	333	346
Increase (Decrease)	4	12	6	-1	13

Pleasant Valley – TK/K-5

Grade	Proj. 2018-19	Proj. 2019-20	Proj. 2020-21	Proj. 2021-22	Proj. 2022-23
TK1	17	18	17	17	17
TK2/K	65	67	64	64	62
1	69/4	69	71	68	68
2	67/5	74	74	76	73
3	78/1	68	75	75	77
4	86/-7	71	61	68	68
5	74/2	88	73	63	70
Subtotal	456/5	455	435	431	435
Increase (Decrease)	-6	-1	-20	-4	4

Rancho – TK/K-5

Grade	Proj. 2018-19	Proj. 2019-20	Proj. 2020-21	Proj. 2021-22	Proj. 2022-23
TK1	12	12	12	12	12
TK2/K	55	60	56	57	55
1	53/2	57	62	58	59
2	54/-2	51	55	60	56
3	45/-2	52	49	53	58
4	58/-6	39	46	43	47
5	60/-1	57	38	45	42
Subtotal	337/-9	328	318	338	329
Increase (Decrease)	-31	-9	-10	20	-9

San Ramon – TK/K-5

Grade	Proj. 2018-19	Proj. 2019-20	Proj. 2020-21	Proj. 2021-22	Proj. 2022-23
TK1	29	29	28	28	28
TK2/K	70	72	69	69	67
1	71/1	71	73	70	70
2	67/-2	69	69	71	68
3	83/1	68	70	70	72
4	75/0	83	68	70	70
5	72/4	79	87	72	74
Subtotal	467/4	471	464	450	449
Increase (Decrease)	-9	4	-7	-14	-1

All grade 6 students are housed at Hamilton Meadow Park, San Jose Intermediate and Sinola Middle, and projections are based on the average distribution of the grade 6 projections prepared for the District, as shown in the following table.

School	Percent	2018-19	2019-20	2020-21	2021-22	2022-23
Hamilton Meadow Park	11.0	60	59	57	54	52
San Jose Intermediate	41.5	227	222	213	202	197
Sinola Middle	47.5	260	254	244	232	225
Totals	100.0	547	535	514	488	474

Hamilton Meadow Park – TK/K-8

Grade	Proj. 2018-19	Proj. 2019-20	Proj. 2020-21	Proj. 2021-22	Proj. 2022-23
TK1	11	11	11	11	10
TK2/K	79	80	77	78	76
1	73/-6	73	74	71	72
2	58/2	75	75	76	73
3	63/-3	55	72	72	73
4	49/-5	58	50	67	67
5	88/-3	46	55	47	64
6	60/11%	59	57	54	52
7	60/-3	57	56	54	51
8	54/-2	58	55	54	52
Subtotal	595/-40	572	581	584	590
Increase (Decrease)	-17	-23	9	3	6

San Jose Intermediate – 6-8

Grade	Proj. 2018-19	Proj. 2019-20	Proj. 2020-21	Proj. 2021-22	Proj. 2022-23
6	227/41.5%	222	213	202	197
7	244/2	229	224	215	204
8	224/5	249	234	229	220
Subtotal	695/7	700	671	646	621
Increase (Decrease)	-31	5	-29	-25	-25

Sinaloa Middle – 6-8

Grade	Proj. 2018-19	Proj. 2019-20	Proj. 2020-21	Proj. 2021-22	Proj. 2022-23
6	260/47.5%	254	244	232	225
7	294/1	261	255	245	233
8	259/-2	292	259	253	243
Subtotal	813/-1	807	758	730	701
Increase (Decrease)	-13	-6	-49	-28	-29

Most grade 9 students are housed at Novato High and San Marin High, with a few also at Marin Oaks and Nova Education Center, and projections are based on the average distribution of the grade 9 projections prepared for the District, as shown in the following table.

School	Percent	2018-19	2019-20	2020-21	2021-22	2022-23
Novato High School	58.0	379	345	383	353	346
San Marin High School	41.0	268	245	271	250	245
Marin Oaks High School	0.5	4	4	4	4	4
Nova Education Center	0.5	4	4	4	4	4
Totals	100.0	655	598	662	611	599

Novato High – 9-12

Grade	Proj. 2018-19	Proj. 2019-20	Proj. 2020-21	Proj. 2021-22	Proj. 2022-23
9	379/58%	345	383	353	346
10	376/-6	373	339	377	347
11	361/-27	349	346	312	350
12	329/-12	349	337	334	300
Subtotal	1,445/-45	1,416	1,405	1,376	1,343
Increase (Decrease)	4	-29	-11	-29	-33

San Marin High – 9-12

Grade	Proj. 2018-19	Proj. 2019-20	Proj. 2020-21	Proj. 2021-22	Proj. 2022-23
9	268/41%	245	271	250	245
10	283/-1	267	244	270	249
11	263/-6	277	261	238	264
12	269/-9	254	268	252	229
Subtotal	1,083/-16	1,043	1,044	1,010	987
Increase (Decrease)	-17	-40	1	-34	-23