

Splashtop Whiteboard

Top Performing Annotation Solution Lets Educators, Sales Professionals, Trainers, etc Turn Tablets Into Interactive Whiteboards



Turn Any Tablet into an Interactive Whiteboard



Easily highlight, draw, or write over presentations using their iPads and tablets. With Whiteboard, you can increase interactivity while you present, train, or teach. No longer hampered by pushing your slides or content from a PC, you can roam around the room and hand the iPad to a colleague or student so they can collaborate on content or work through an assignment with you.

Watch this video to learn more: <http://www.splashtop.com/whiteboard>

2014 Splashtop Whiteboard Install and Setup Instructions

This app is purchased by MBS for MBS teachers.

Three Step process:

1. Download Splashtop Whiteboard APP to your iPad (from MBS App Catalog). Located under the PURCHASED tab.
2. Download free Splashtop Streamer to your Windows or Mac computer. You may download on your home computer as well for practice.
3. Connect iPad APP and computer.

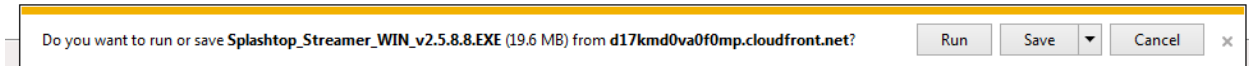
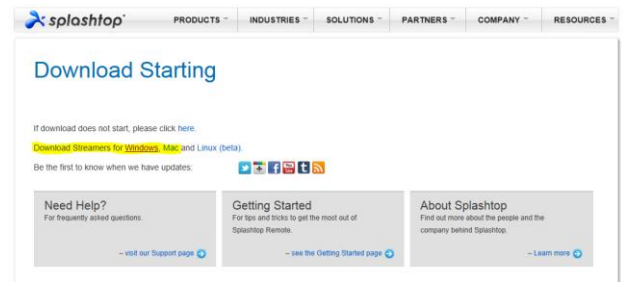
Instructions are on Page 2.....


STEP 1: Download Splashtop Whiteboard APP to your school iPad

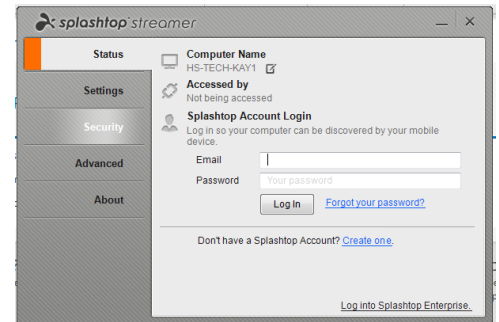
- Email was sent to you from your school technology coordinator on how to download the APP.

Step 2: Download free Splashtop Streamer to your Windows or Mac computer.

- Click this link
<http://www.splashtop.com/downloadstart?platform=Windows>
- Click Windows or Mac based on your desktop
- You may see the following on your computer.
- If so, click RUN



-  When finished you may see this button in the startup tray. If so – click the button and ACCEPT
- Select Just Myself and FINISH
- The following will appear
 - If you **DID NOT** have an account last year you need to **CREATE ONE**. Use school email.
 - If you **did** have an account – just LOG IN.
 - **Click the STATUS tab** and write down your computer name.
 - **Click the SECURITY tab** and enter a password. You will need this for your iPad to access your desktop.
 - **Click the ADVANCED tab** and write down the IP address.



Step 3: Connect iPad APP to your Computer

- On the iPad open the Splashtop Whiteboard App you already downloaded.
- Click the ADD button to add a computer.
 - Enter the name of your computer that you wrote down above.
 - Enter the IP address that you wrote down above.
 - Enter the security code you entered above.
 - SAVE.
- You should now see your computer as an option. Click the NAME of your computer – and it should connect.
- You are now able to use your iPad to open any software on your computer from anywhere in the room –or building.

NOTE: Always LOCK your computer when you are not using it.

NOTE: Always LOG OUT of your computer when you leave for the day.