



Mineola Union Free School District
Hampton Elementary School
10 Hampton Road, Mineola, NY

***ADDITION AND ALTERATION
&
SITE IMPROVEMENTS***

NOVEMBER 6, 2014

Michael Mark, AIA
Principal
Mark Design Studios Architecture, PC

Site Plan Options



Mineola High School

MINEOLA UFSD SITE PLAN OPTIONS		
OPTION NUMBER	MINEOLA HIGH SCHOOL ("PART 1")	HAMPTON ELEMENTARY SCHOOL ("PART 2")
1	CONFIGURATION TO REMAIN AS EXISTING	NEW TURF FIELD WITH 3-LANE NON-REGULATION TRACK
2	CONFIGURATION TO REMAIN AS EXISTING	NEW TURF FIELD WITH 400-METER REGULATION TRACK
3	NEW TURF FIELD WITH 3-LANE NON-REGULATION TRACK; BASEBALL FIELD TO REMAIN AS EXISTING	CONFIGURATION TO REMAIN AS EXISTING
4	NEW TURF FIELD WITH 400-METER REGULATION TRACK (EAST-WEST ORIENTATION)	NEW VARSITY BASEBALL FIELD



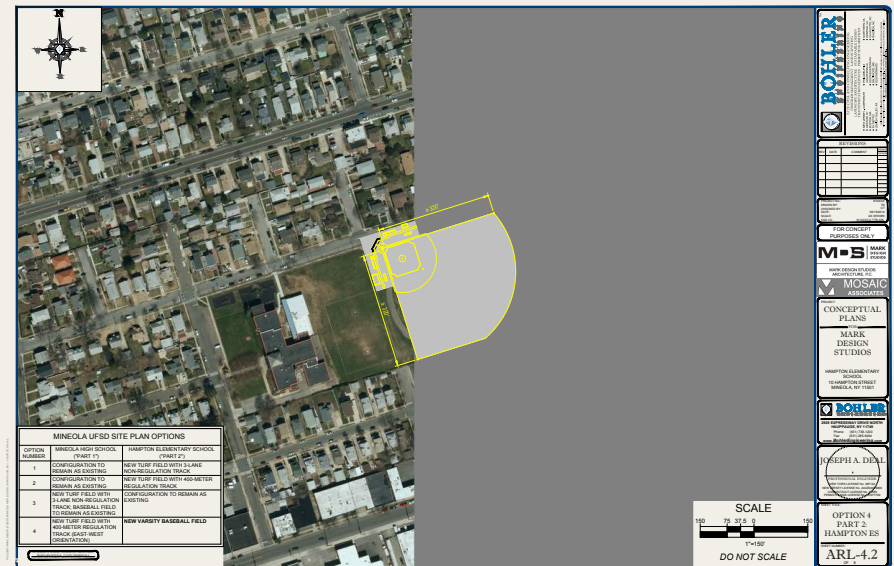
Hampton Elementary School

Site Plan Option 4

- HS new turf field with 400-Meter regulation track
- Hampton new Varsity baseball field



Mineola High School



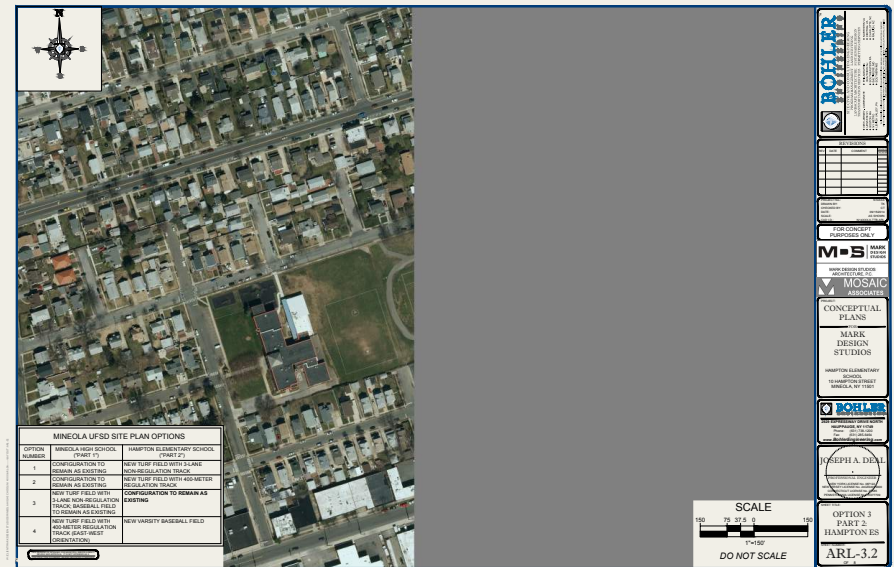
Hampton Elementary School

Site Plan Option 3

- HS new turf field with 3-lane non-regulation rack, baseball to remain
- Hampton configuration to remain



Mineola High School



Hampton Elementary School

Site Plan Option 2

- HS configuration to remain
- Hampton new turf field with 400-Meter regulation track



Mineola High School



Hampton Elementary School

Site Plan Option 1

- HS configuration to remain
- Hampton new turf field with 3-lane non-regulation rack



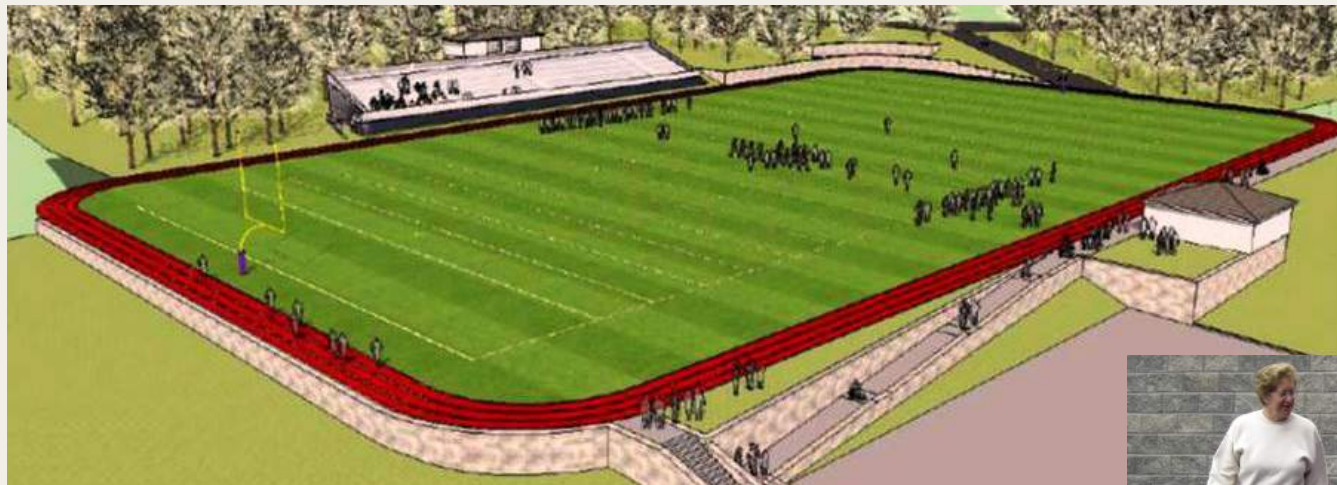
Mineola High School



Hampton Elementary School

Hampton Athletic Field Concept

- Synthetic turf field
- Multi-sport striping
- 3-lane non-regulation turf walking track
- Safety buffer zone with smaller footprint



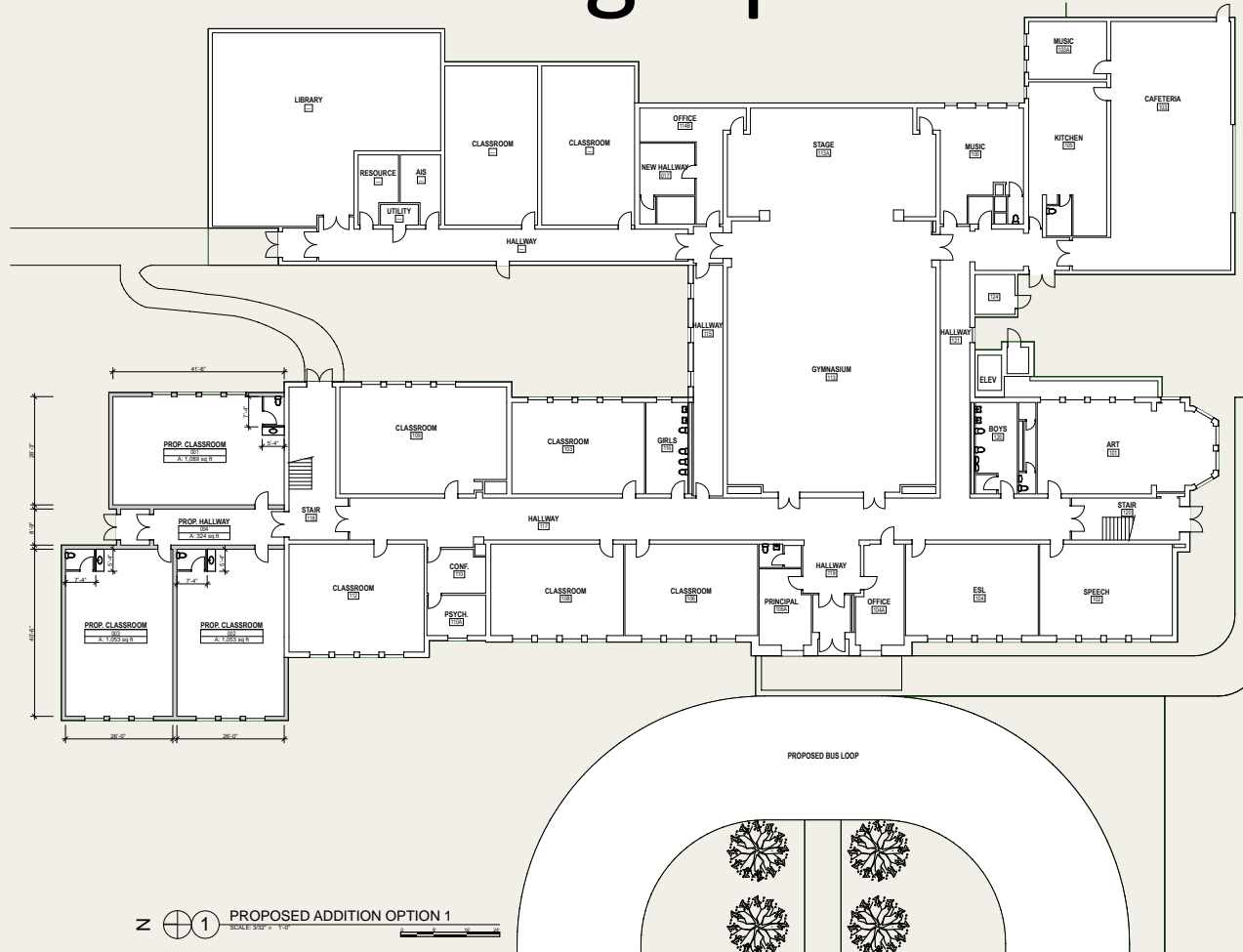
Hampton Site Plan

Building Option 1

- Hampton new turf field with 3-lane non-regulation rack
- New 3 classroom addition
- New bus loop



Hampton Floor Plan Building Option 1

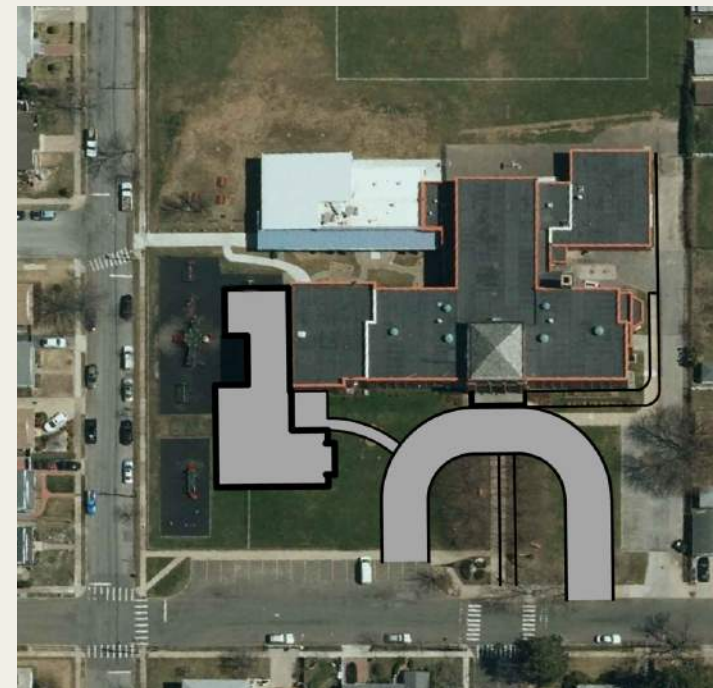


z (1) PROPOSED ADDITION OPTION 1

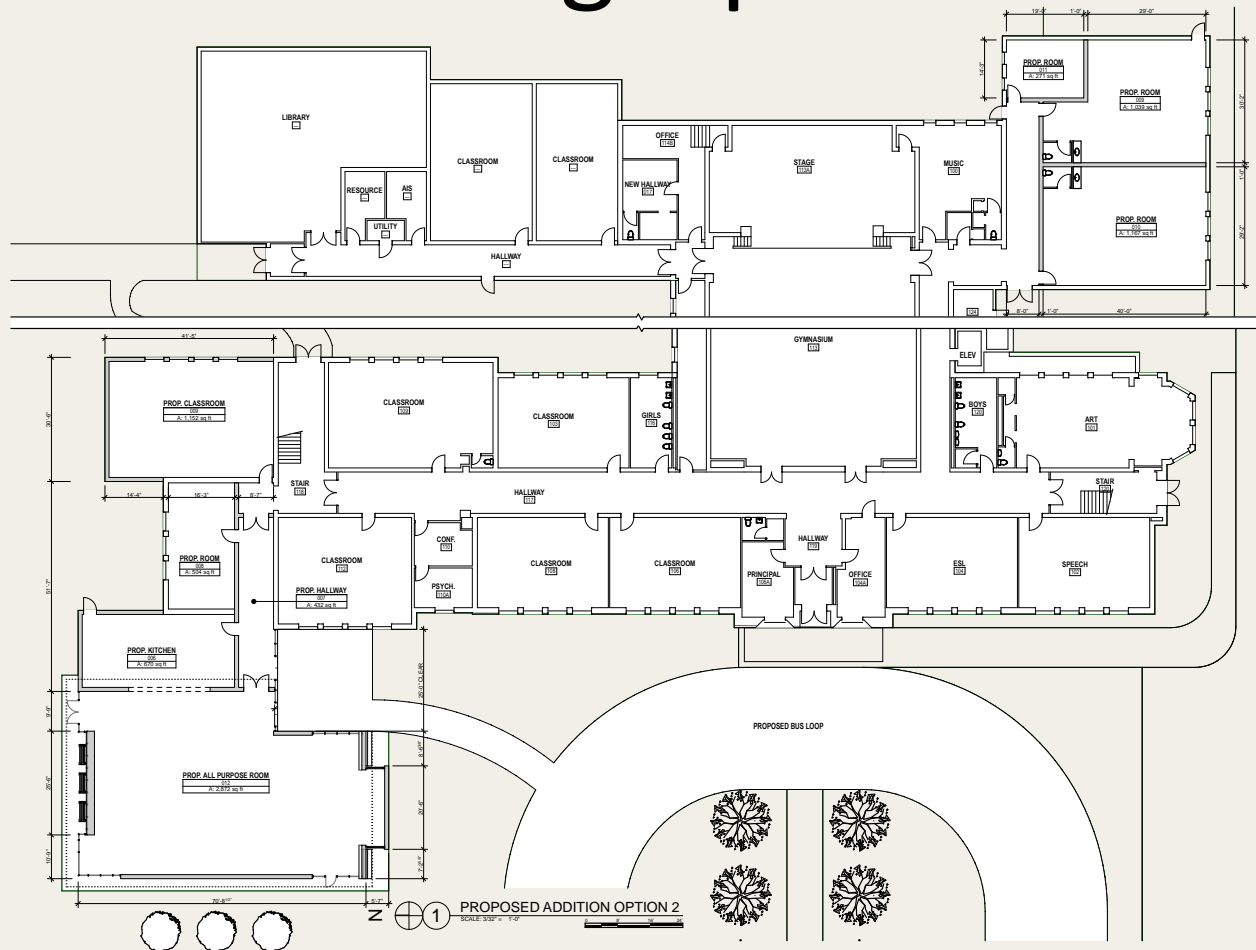
Hampton Site Plan

Building Option 2

- Hampton new turf field with 3-lane non-regulation rack
- New APR/Cafeteria addition with additional classroom as bid alternate
- Convert existing cafeteria into classrooms
- New bus loop



Hampton Floor Plan Building Option 2



APR/Cafeteria rendering from front lawn



Rendering view of Cafeteria Entry from bus loop



Cafeteria rendering from playground

