



# Mineola Public Schools

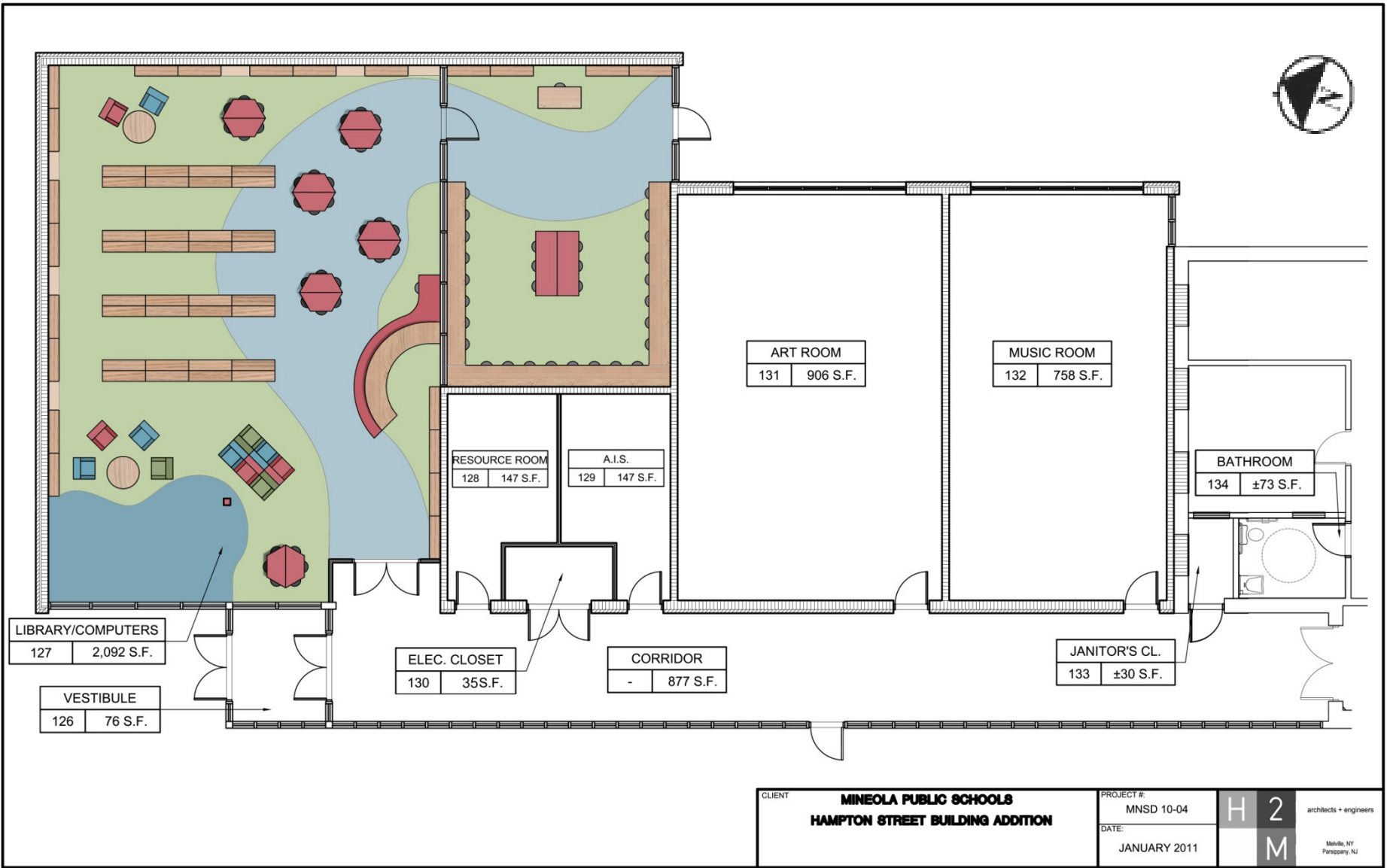
## Building Addition to the Hampton Street School

03 February 2011



Hampton Street  
School

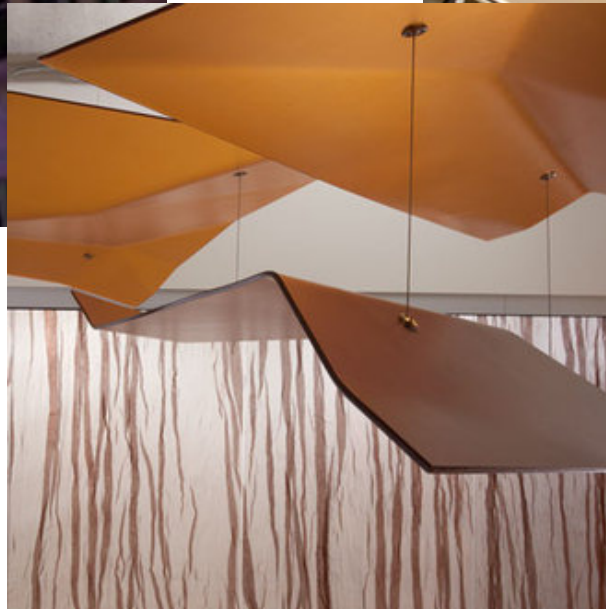
I:\mnsd-Rendered Plans - Standard\Rendered Plans.dwg Last Modified Jan 26, 2011 - 10:00am Plotted on Jan 26, 2011 - 9:03am By ksanotto

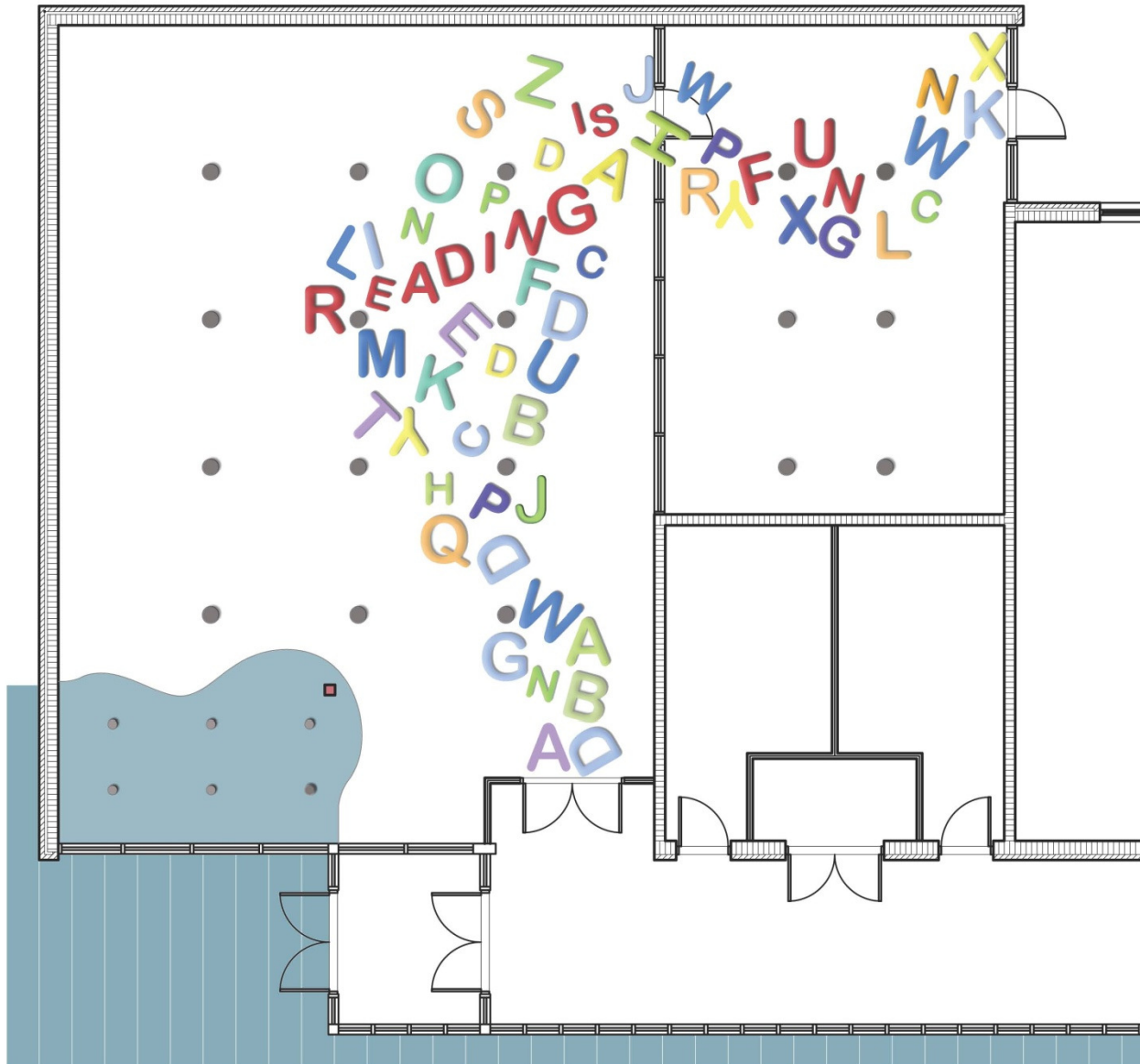


CLIENT	<b>MINEOLA PUBLIC SCHOOLS</b> <b>HAMPTON STREET BUILDING ADDITION</b>	PROJECT #:	MNSD 10-04	H 2 M	architects + engineers  Melville, NY Parsippany, NJ
DATE:	JANUARY 2011				

## Hampton Street School Floor Plan 5,511 Gross Square









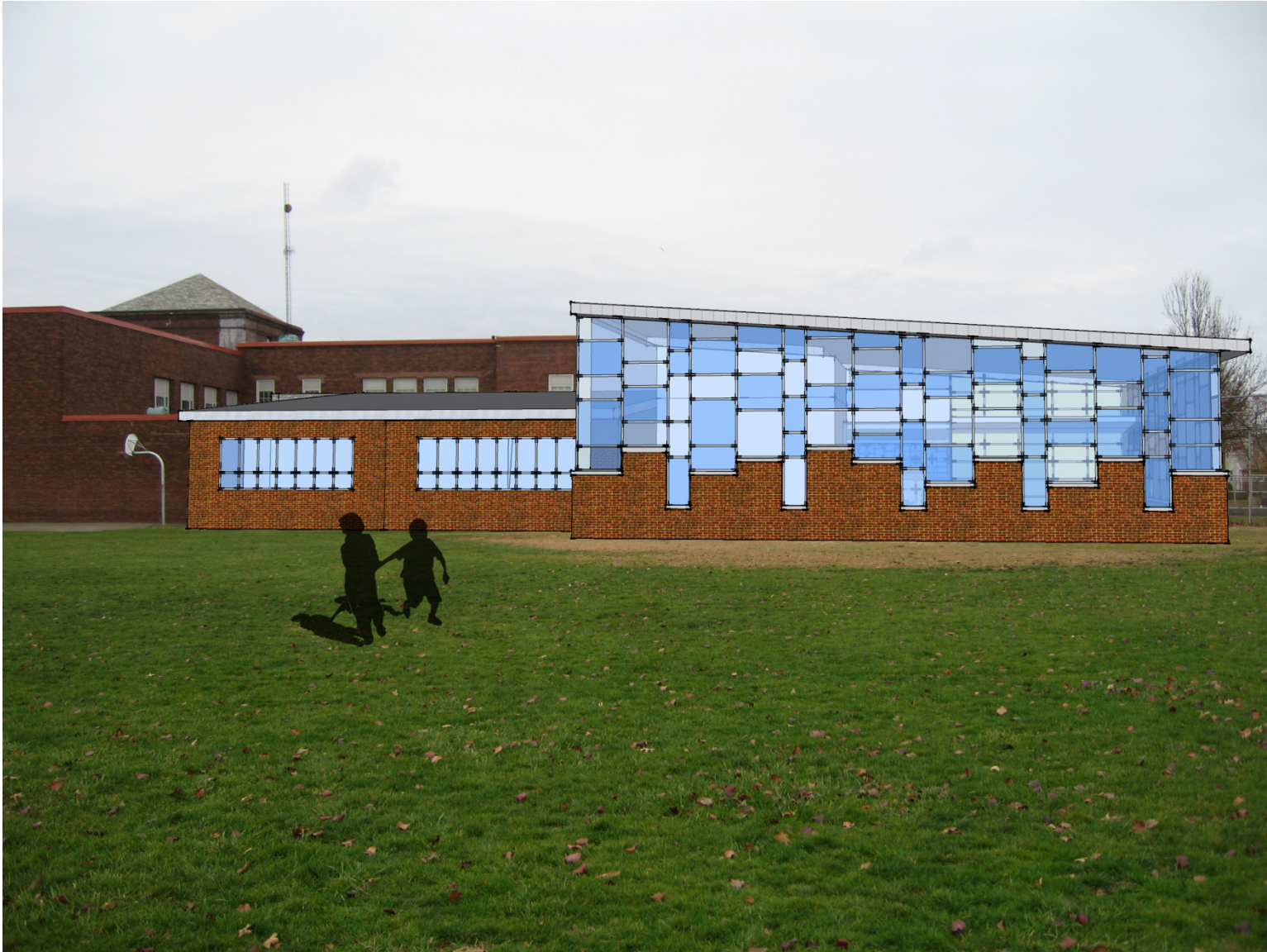








Hampton Street School – Building Addition  
Exterior view - front entrance



Hampton Street School – Building Addition  
Exterior view looking west

# FINANCIALS

## HAMPTON STREET SCHOOL BUILDING ADDITION (NO ALTERNATES)

BASE CONSTRUCTION COST SUBTOTAL  
\$1,791,000

CONSTRUCTION CONTINGENCY (10%)  
\$179,000

INFLATION (1.5%)  
\$29,550

**TOTAL PROJECT COST:**  
**\$1,999,550**