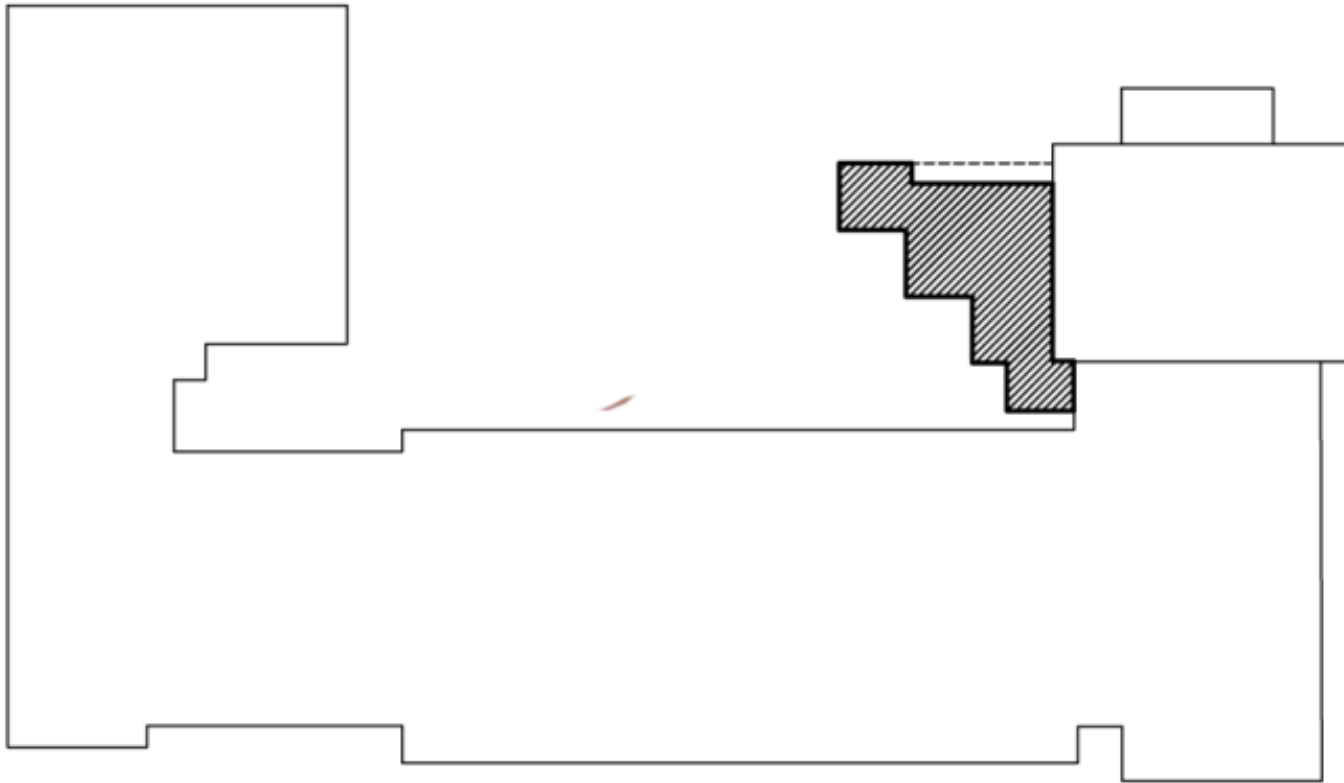




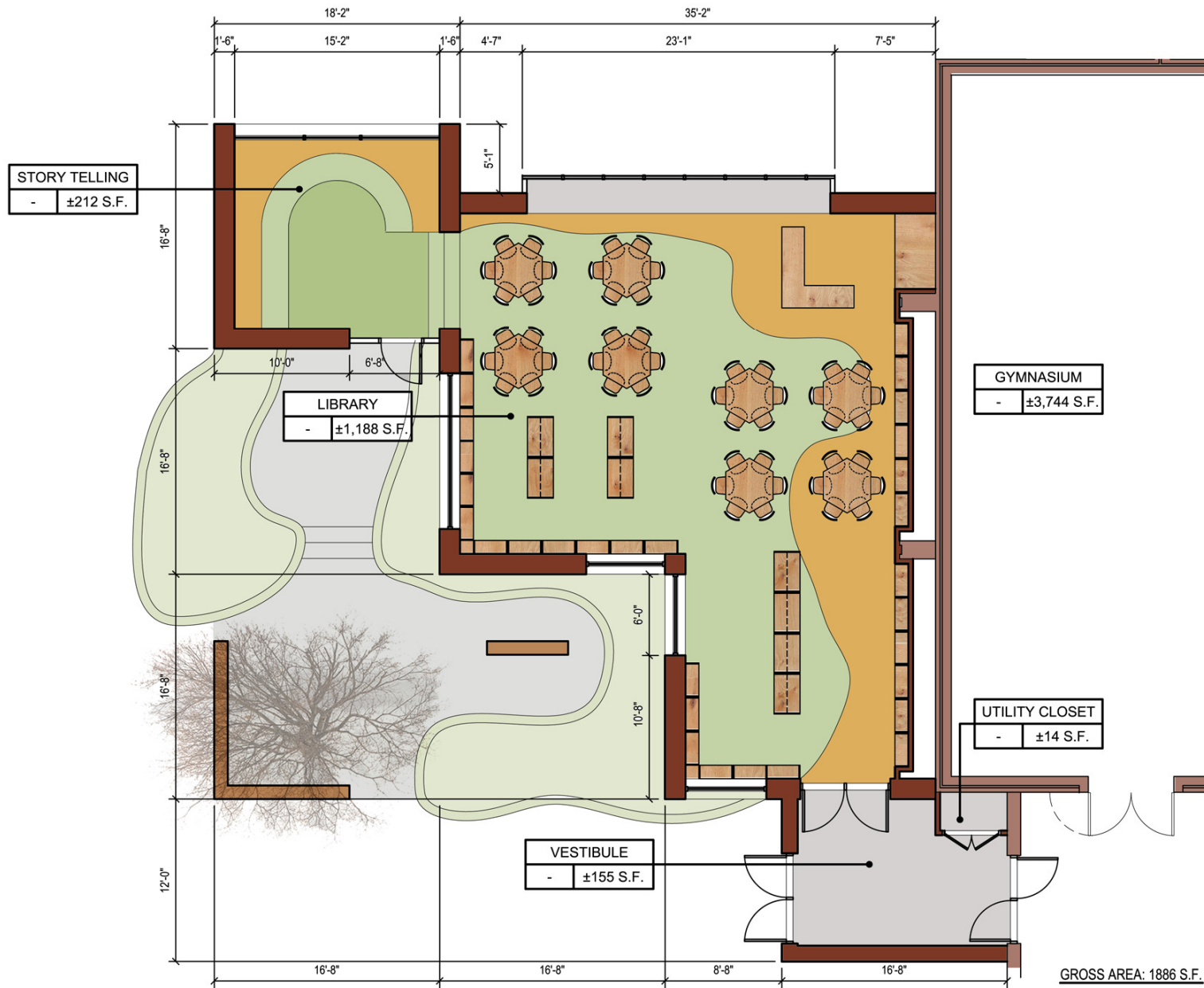
Mineola Public Schools

Building Addition to the Meadow Street School

19 January 2012



Meadow Drive School – Library Addition
Key Plan



Meadow Drive School – Library Addition
Preliminary Floor Plan



Meadow Drive School – Library Addition
Interior view from the main entrance looking west



Meadow Drive School – Library Addition
Interior view from the circulation desk looking south



Meadow Drive School – Library Addition
Interior view looking east towards main entrance



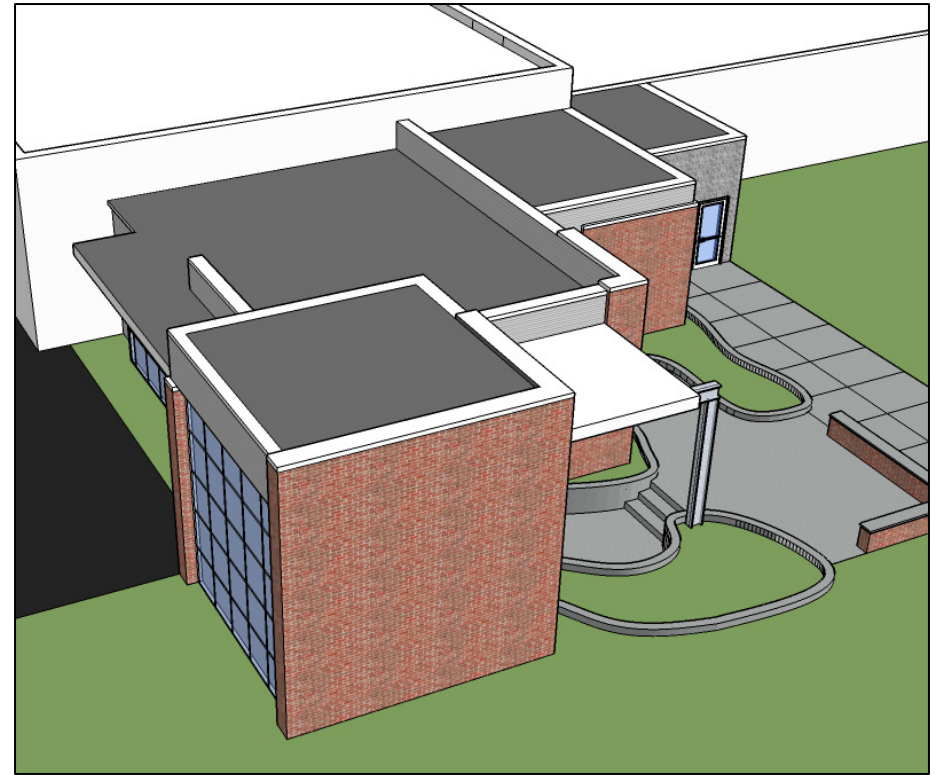
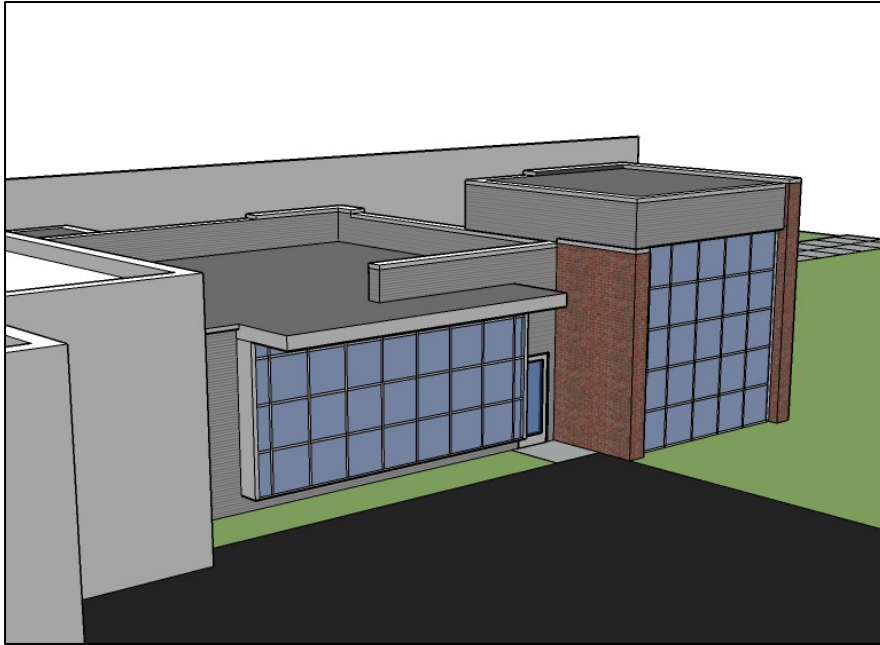
Meadow Drive School – Library Addition
Interior view of the storytelling area



Meadow Drive School – Library Addition
Exterior view of the main entrance and curriculum
garden



Meadow Drive School – Library Addition
Exterior view of the main entrance and curriculum
garden



Meadow Drive School – Library Addition
Exterior view of the main entrance and curriculum
garden

FINANCIALS

MEADOW DRIVE SCHOOL BUILDING ADDITION

BASE CONSTRUCTION COST SUBTOTAL	\$672,950.00
CASEWORK	\$0
CONSTRUCTION CONTINGENCY (10%)	\$67,295.00
INFLATION (1.5%)	\$6,730.00
TOTAL CONSTRUCTION SUBTOTAL:	\$746,975.00
SOFT COST (A/E FEES, SOIL BORINGS, SURVEY, ENVIRONMENTAL TESTING, REIMBURSABLE EXPENSES)	\$59,318.00
TOTAL PROJECT COST OPINION	\$806,293.00