



Meadow Drive Kindergarten Orientation



Ms. Fahey
Principal

Tonight:

1. Arrival/Dismissal
2. Medical information
3. Sample daily schedule
4. "Kindergarten Readiness"
5. Curriculum
6. Supports
7. Badge Books
8. The First Week!

Important Phone Numbers!

MEADOW DRIVE SCHOOL

- MAIN OFFICE: (516) 237-2400
- NURSE: (516) 237- 2480
- TRANSPORTATION: (516) 237- 2080
- PTA: MEADOWDRPTA@GMAIL.COM
- SCHOOL LUNCHES: (516) 237-2696



School Arrival

Learners in grades K-2 are offered bussing if you live .5 miles or beyond.

“Walkers” (non bus)

- Playground gate opens at 8am. Bring them to the back entrance door.
- Bell rings 8:12, our greeter will remain there until approximately 8:17. (Then we close the gate.)
- Late arrivals: drop off in the main office, must be signed in.

If you are visiting your child's class or volunteering at the school: use front door, and sign in with photo ID

School Dismissal

Students will only be dismissed to the parent unless written permissions is provided.



Dismissal Time:

Meadow Drive: 2:49 p.m.

At Meadow Drive, walkers are picked at the blacktop by the playground.

Early dismissal is permitted up until 2:20.

Medical Information

Mrs. McDermott - Meadow Drive

Mrs. Schneebaum - Hampton Street

[HTTPS://WWW.MINEOLA.K12.NY.US/DEPARTMENTS/NURSE](https://www.mineola.k12.ny.us/departments/nurse)

IMMUNIZATIONS:

- KINDERGARTEN SPECIFIC IMMUNIZATION REQUIREMENTS, MUST BE IN COMPLIANCE
 - DPT, POLIO, MMR, VARICELLA (SPECIFIC IMMUNIZATIONS LISTED ON WEBSITE)
 - PHYSICAL EXAM (FORM ON WEBSITE)

PLANS FOR ALLERGIES, ASTHMA, SEIZURES DIABETES ON WEBSITE ABOVE

PLEASE SEND IN AN EXTRA SETS OF CLOTHES, LABEL EVERYTHING!

CHILDREN SHOULD BE INDEPENDENT WHEN THEY USE THE BATHROOM, PRACTICE NOW!

CLASSROOM FOOD ALLERGIES- YOU WILL BE ADVISED

ALL MEDICATION(S) SHOULD BE BROUGHT TO SCHOOL BY AN ADULT

SHARE ANY MEDICAL NEEDS OR CONCERNS AND NEW MEDICAL CHANGES WITH THE NURSE

Miscellaneous

When to call!

- ★ CHANGE IN DISMISSAL
- ★ OUT SICK
- ★ QUESTIONS/CONCERNS

E-school Parent Portal

- ★ NWEA
- ★ IEP progress reports
- ★ <https://parent.ioeducation.com/Login.aspx>
 - One account per family
 - Need ID#

Food Services

- ★ [HTTPS://WWW.MINEOLA.K12.NY.US/PARENTSSTUDENTS/FOOD SERVICES](https://www.mineola.k12.ny.us/parentsstudents/food_services)
- ★ FREE (2ND LUNCH & SNACK \$\$)
- ★ LUNCH OPTIONS CHANGE DAILY
 - ALWAYS HAVE GRILLED CHEESE, BAGEL MELT, SALADS, TURKEY SANDWICH, YOGURT, CEREAL
- ★ FRUIT AND MILK INCLUDED

At school:

★ FOLLOW MULTI STEP DIRECTIONS

At home:

★ TAKE OFF YOUR COAT AND HANG
IT UP, JOIN ME ON THE RUG.

★ PUT ON YOUR SHOES AND COAT
★ BRING ME YOUR SOCKS, SHOES
AND WATER BOTTLE.

★ ASK FOR HELP

★ TALK & LISTEN TO ADULTS

★ EXPLAIN THEIR THINKING

★ GREET STORE CLERKS

★ LISTEN TO A STORY WITHOUT
INTERRUPTING

★ ORDER THEIR OWN MEAL

★ WAIT BEFORE INTERRUPTING

★ WHEN YOU'RE DONE, CAN I HAVE
A TURN?

★ SHARE & TAKE TURNS

★ REINFORCE HOW TO ASK TO USE
SOMETHING THAT IS BEING USED

“Kindergarten Readiness”

At school:

★ HAVE STRATEGIES TO PROBLEM

At home:

★ WE TEACH PROBLEM SOLVING
SKILLS IN EVERY GRADE!

SOLVE WITH PEERS

★ WALK THROUGH SITUATIONS.

○ WHAT WOULD YOU DO IF A
FRIEND TOOK YOUR TOY?

★ WIN AND LOSE

GRACIOUSLY/KNOW HOW TO FAIL

★ WE WILL TEACH FRUSTRATION
TOLERANCE

& TRY AGAIN!

★ PLAY GAMES AND LET THEM
EXPERIENCE LOSING, TALK TO

★ WE WILL ALSO TEACH HOW TO
CELEBRATE WITHOUT HURTING
OTHERS' FEELINGS

THEM ABOUT THEIR FEELINGS AND
HOW TO FOCUS ON THE GAME NOT
THE RESULT

“Kindergarten Readiness”

A 6 DAY CYCLE



Sample Schedule

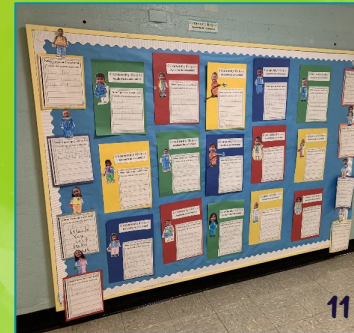
- ★ ARRIVAL
- ★ MORNING MEETING
- ★ INTEGRATED CURRICULUM: READING & WRITING
- ★ SPECIAL
- ★ SNACK
- ★ PHONICS/WORD WORK (FOUNDATIONS/HEGGERTY/LECTOESCRITURA)
- ★ SHARED/INDEPENDENT READING
- ★ RECESS & LUNCH
- ★ LITERACY CENTERS & SMALL GROUP READING INSTRUCTION
- ★ MATH
- ★ WRITER'S WORKSHOP
- ★ PACK UP & DISMISSAL

SPECIALS:
LIBRARY & IBL
STEAM
ART
MUSIC
PHYSICAL EDUCATION



Curriculum

- ★ RESPONSIVE INSTRUCTIONAL PRACTICES
- ★ VISIBLE LEARNING (BADGE BOOKS)
- ★ NYS NEXT GENERATION STANDARDS
- ★ INTEGRATED CURRICULUM: READING & WRITING THROUGH SOCIAL STUDIES & SCIENCE
- ★ STRUCTURED LITERACY INSTRUCTION
 - FOUNDATIONS
 - HEGGERTY
- ★ MATH EXPRESSIONS
- ★ TECHNOLOGY AS A RESOURCE



Kindergarten Units of Study

- ★ Unit 1: Me at School- *what makes me, me?*
- ★ Unit 2: Me and My Story- *what is a story?*
- ★ Unit 3: Me and Others- *what makes us unique?*
- ★ Unit 4: Me and My Needs- *why are needs important? Why are wants important?*
- ★ Unit 5: Me and the Environment- *what is the difference between living and non-living things?*
- ★ Unit 6: Me on the Map- *where in the world am I?*

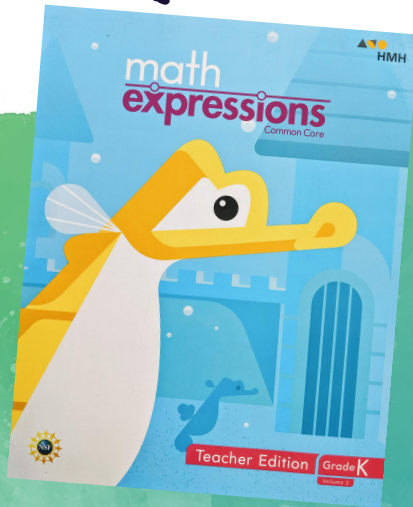


Structured Literacy



- ★ Interactive Read Alouds and Authentic texts
- ★ Writer's Workshop
- ★ Targeted Reading Instruction & Learning Centers
- ★ Word Study (Foundations and Heggerty)

Key Concepts in Math

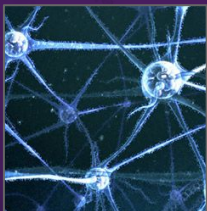


- ★ Understand and write numbers 1-20
- ★ Add and subtract through 10
- ★ Patterns
- ★ Coins
- ★ Shapes
- ★ Comparisons

Growth Mindset

I GROW MY BRAIN WHEN I...

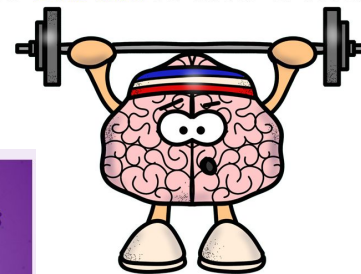
- ★ EMBRACE THE "POWER OF YET"
- ★ TAKE ON CHALLENGES
- ★ LEARN FROM MISTAKES
- ★ TRY NEW THINGS



4 ACADEMIC MINDSETS:

- ★ I belong in this learning community.
- ★ I can change my abilities through effort (a growth mindset).
- ★ I can succeed.
- ★ This work has value and purpose for me.

The **BRAIN** is like a Muscle



How My Brain Works



An Introduction to Neuroscience



Assessments & Progress Monitoring

Reading:

Reading Probes/mClass & Running Records

NWEA

1:1 and small group conferencing



Math:

NWEA



Unit Assessments

1:1 and small group conferencing

Kindergarten Badge Books!

My Kindergarten
Badge Book



Support & Enrichment!

In & Out of the classroom



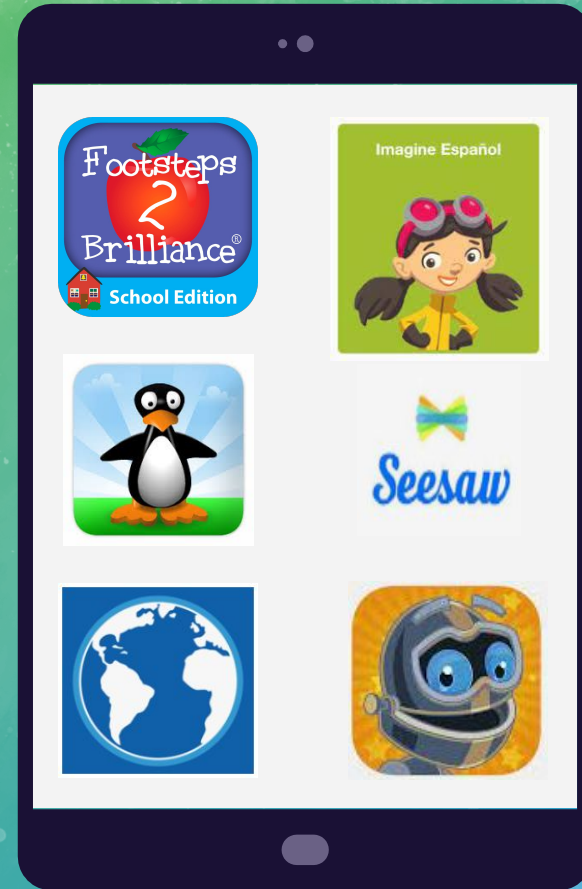
1:1 iPads

✓ Using technology to reinforce concepts taught

✓ Applications

- Footsteps2Brilliance
- STMath
- Lexia
- Raz Kids/Learning A-Z
- SeeSaw

✓ Headphones



Behaviors That Promote Learning

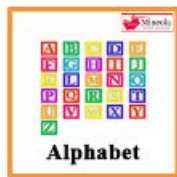
- Student demonstrates kindness and respect with peers and adults.
 Consistently Sometimes Rarely
- Student perseveres in task through to completion, remainine focused.
 Consistently Sometimes Rarely
- Student thinks before acting, remaining calm and tak
 Consistently Sometimes Rarely
- Student listens with understanding and empathy.
 Consistently Sometimes Rarely
- Student tries his/her best, always focusing on improv
 Consistently Sometimes Rarely
- When something doesn't work, student tries a differ
 Consistently Sometimes Rarely
- Student tries new things.
 Consistently Sometimes Rarely
- Student works well with a team and learns from othe
 Consistently Sometimes Rarely
- Student admits what he/she does not know and asks
 Consistently Sometimes Rarely
- Student exhibits a growth mindset when trying and p
 Consistently Sometimes Rarely



Parent Commun



Literacy



Alphabet (Literacy)

DESCRIPTION: For this badge, the student should be able to recognize and name all upper and lowercase letters of the alphabet.

CRITERIA:

- Student identifies 26 uppercase letters by name.
- Student identifies 26 lowercase letters by name.

HOW TO PRACTICE:

- Sing alphabet songs while pointing to the written alphabet.
- Play with toys or iPad/phone applications that focus on the alphabet.
- Finding and cutting out letters in print.
- Play "I Spy" with letters.
- Identify letters in family members' and friends' names.
- Practice identifying letters in a variety of fonts.

Resources and Links:



Find the Letter
Videos

MORE ON THE BADGE BOOK

FIND THE FULL PDF OF THE BADGE BOOK ON THE MINEOLA UFSD

WEBSITE:

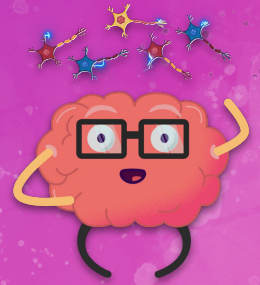
[HTTPS://WWW.MINEOLA.K12.NY.US/PARENTSSTUDENTS/BADGE_BOOKS](https://www.mineola.k12.ny.us/parentsstudents/badge_books)

KINDERGARTEN BADGES: Trimester 1- Classroom Teacher

 Author / Illustrator PG- Date Earned: _____	 Relationship between Illustrations and text PG- Date Earned: _____	 Text Connections PG- Date Earned: _____	 Narrative with Pictures PG- Date Earned: _____	 Bucket Filler PG- Date Earned: _____
 Me! PG- Date Earned: _____	 Fine Motor Skills PG- Date Earned: _____	 Days of the Week PG- Date Earned: _____	 Months of the Year PG- Date Earned: _____	 Patterning PG- Date Earned: _____
 Identifying & Describing 2D Shapes PG- Date Earned: _____	 Trimester 1 Reading Enrichment* PG- Date Earned: _____	 The Study of Me* PG- Date Earned: _____	*These badges are opportunities for your child to explore his or her interests and to enrich learning through home-based projects. These are <i>optional</i> projects that students will share with their classmates.	

Getting Ready!

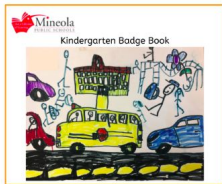
★ A Parent's Guide to Developing a Growth Mindset in Children



★ LITERACY TIPS FOR PARENTS OF YOUNG READERS AND WRITERS (ENGLISH)

★ Consejos para padres de jóvenes lectores y escritores

My Kindergarten
Badge Book



Artwork by Ian Proda



ABOUT THE FIRST WEEK

- ★ **AUGUST 26TH* TENTATIVE - SUPPLY DROP OFF**
 - 9:00AM-12:00PM
 - PTA WELCOME BACK EVENTS (TIME AND DETAILS TBD)
- ★ **SEPTEMBER 3TH & 4TH - FIRST DAYS OF SCHOOL (1/2 DAYS)**
 - 8:12 A.M. - 11:30 A.M.
 - BUS SERVICE IS PROVIDED BOTH WAYS TO THOSE WHO QUALIFY
- ★ **SEPTEMBER 5TH- FIRST FULL DAY OF KINDERGARTEN**
 - MEADOW DRIVE: 8:12 A.M.- 2:49 PM



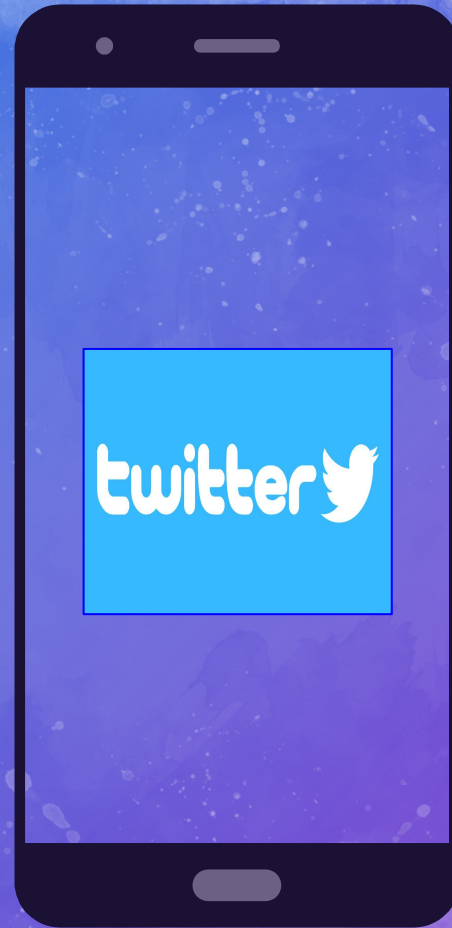
Follow us on Twitter!

@meadowdriveelem

@mineolaufsd

@mineola_ufsd (Instagram)

And follow your child's teacher!



THANK
YOU!

Questions?

Go to our website:

www.Mineola.k12.ny.us

or

Email us!

jfahey@mineola.k12.ny.us

Dual Language Program



Mrs. Shaw
Principal
Hampton Street



Ms. Fahey
Principal
Meadow Drive



Ms. Ortiz
Director of Curriculum, Instruction and Learning

Dual Language

- 2 TEACHERS(1ST & 2ND GRADE HAVE 1 BILINGUAL TEACHER)
- ALTERNATE BETWEEN ENGLISH & SPANISH
- PREKINDERGARTEN – HIGH SCHOOL
- SUSTAINED, DELIBERATE, STRATEGIC USE OF TWO LANGUAGES
- BI-LITERACY SEAL ON HIGH SCHOOL DIPLOMA
- SPECIALS ARE IN ENGLISH

The Benefits of Bilingualism



INTELLECTUAL: HIGHER COGNITIVE ABILITIES, FLEXIBILITY AND LANGUAGE LEARNING SKILLS

ACADEMIC: OUTPERFORM THEIR PEERS

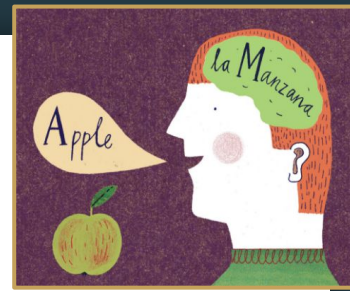
PERSONAL: DEVELOPING AND VALIDATING A CHILD'S NATIVE OR FAMILY LANGUAGE

ECONOMIC: GLOBAL MARKETS HAVE DEVELOPED A GREATER NEED FOR INDIVIDUALS WITH STRONG BILINGUAL, BI-LITERATE AND BICULTURAL SKILLS.

CULTURAL: LANGUAGE LEARNING OPENS THE DOORS TO CULTURAL EXCHANGES AND MULTICULTURAL UNDERSTANDING.

**INFORMATION FROM EASTERN SUFFOLK BOCES - OFFICE OF BILINGUAL EDUCATION*

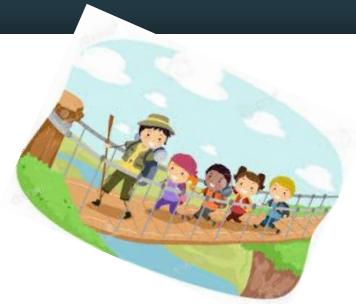
What else does the research say?



- DUAL LANGUAGE INSTRUCTION ENRICHES THE EDUCATION OF ENGLISH SPEAKING STUDENTS BY TEACHING THEM ALL OF THEIR ACADEMIC SUBJECTS IN A SECOND LANGUAGE
- STUDENTS DEVELOP PROFICIENCY IN THE SECOND LANGUAGE BY HEARING AND USING IT TO LEARN THEIR SCHOOL SUBJECTS RATHER THAN BY STUDYING THE LANGUAGE ITSELF
- OVER THREE DECADES OF STUDIES CONSISTENTLY SHOW THAT DUAL LANGUAGE STUDENTS ACHIEVE AS WELL AS OR BETTER THAN THEIR PEERS ON STANDARDIZED MEASURES OF VERBAL AND MATHEMATICS SKILLS ADMINISTERED IN ENGLISH

(CLOUD, GENESEE, & HAYMAN, 2000)

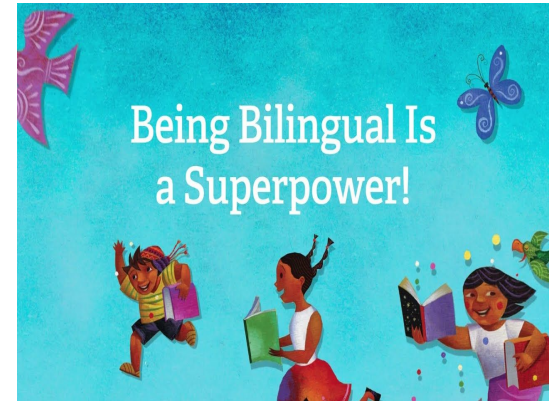
The Strategic Use of Two Languages



SPANISH	THE BRIDGE	ENGLISH
<p>CONCEPTS ARE DEVELOPED IN DEPTH (BASED ON LEARNING STANDARDS)</p> <p>ACADEMIC LANGUAGE IS DEVELOPED</p> <p>SPANISH IS TAUGHT USING AUTHENTIC METHODS THAT MATCH HOW SPANISH WORKS (WORD WALLS FOR SPANISH, INITIAL LITERACY IN SPANISH).</p>	<p>OCCURS ONCE STUDENTS HAVE LEARNED THE BIG IDEA- THE FOCUS ON TRANSFERRING LEARNING FROM ONE LANGUAGE TO THE NEXT</p> <p>PLACES BOTH LANGUAGES SIDE BY SIDE</p> <ul style="list-style-type: none">- SIMILARITIES/DIFFERENCES	<p>HAPPENS ONCE THE BRIDGE IS FINISHED</p> <p>PROVIDES OPPORTUNITIES FOR STUDENTS TO USE ENGLISH BACKGROUND KNOWLEDGE AND VOCABULARY LEARNED IN SPANISH. FOCUS ON HOW ENGLISH IS UNIQUE AND DIFFERENT FROM SPANISH</p> <p>IS CHARACTERIZED BY EXTENSION ACTIVITIES</p>

It is important to keep in mind...

- ★ Please don't compare your child's progress to that of their monolingual peers, or other siblings, as it will be at a different pace!
- ★ Your child will be learning two languages, so they should receive support in BOTH languages at home (homework, reading, speaking, etc.).
- ★ They will be working toward more grade level standards each year (there are English & Spanish badges specific to dual language).



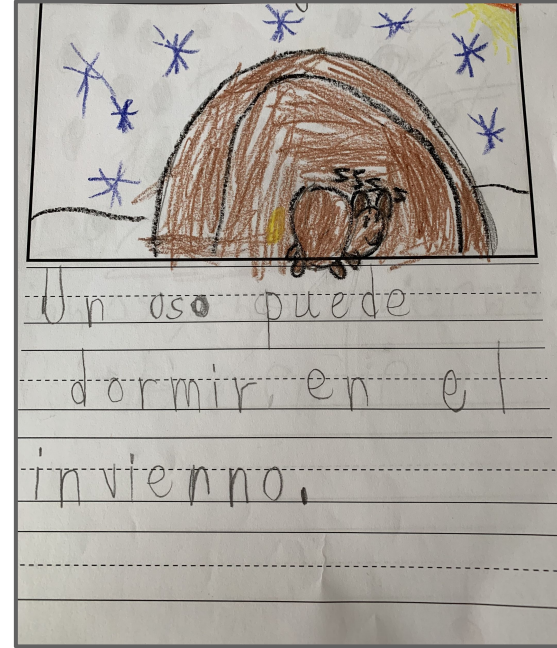
What to expect...

- AFTER AN INITIAL SILENT PERIOD...



- STUDENTS WILL BE ABLE TO...

- ENGAGE IN SIMPLE CONVERSATION IN THE SECOND LANGUAGE
 - WRITE SIMPLE SENTENCES
 - DISTINGUISH GRADE LEVEL PUNCTUATION TO USE IN ENGLISH/SPANISH
 - UNDERSTAND GENDER AGREEMENT IN SPANISH
- EXCITEMENT ABOUT LEARNING A NEW LANGUAGE!



Mesú

Mesú, Mesú,
me subo a la cama,
toco la campana,
me subo a la mesa,
caigo de cabeza,
me subo a la silla,
caigo de rodillas,
mi mamá me mira,
yo la miro a ella,
y ella me contesta así:
"Cariño, bombón,
Salta que salta y pon".



Jugando Mesu

Finding out about placement

- Letters come out in August
(mailed home)
- eSchool is updated in August
 - High interest!

Questions?

¿Preguntas?

Go to our website: [www. Mineola.k12.ny.us](http://www.Mineola.k12.ny.us)

or

Email us!

jfahey@mineola.k12.ny.us

lshaw@mineola.k12.ny.us