



MIAMI TRACE LOCAL SCHOOLS

QUALITY PROFILE

3818 State Route 41 NW
Washington Court House, Ohio 43160



Welcome to the Miami Trace School District. We would like to take this opportunity to share our Panther Points of Pride. The purpose of this profile is to highlight the aspects of our school community that cannot be incorporated into an accountability system. While we respect and utilize the state's report card components, Miami Trace has numerous strengths that go beyond the metrics within the report card.

Panther Points of Pride stem from every relationship built and partnership created. Our staff, students, parents/guardians, community members and tax payers influence the strong pride that exists within the Miami Trace culture. We have been afforded state-of-the-art facilities that enable us to offer well-rounded, educational experiences.

Panther Nation values the learning process. We believe in the power of embracing every opportunity throughout the process, understanding that each one contributes to our growth and success. Through our commitment to the pursuit and creation of opportunities, Panther Nation has established a culture of excellence and innovation.

We hope you enjoy this profile and invite you to explore our district website to learn more about the options available at Miami Trace. If you have any questions or would like to set up a visit, please contact me at kpittser@mtpanthers.org or 740-335-3010.

Kim Pittser, Superintendent
MT Proud



DISTRICT OVERVIEW

Miami Trace
Employees
337

School Colors
Black, White, & Gold
School Mascot
The Panther

One Elementary
School
of Approximately
1120 students

One Middle School
of Approximately
615 students

One High School
of Approximately
780 students

Base Teacher Salary
\$43,983
Substitute Teacher Rate
\$150 per day

275,000+ Meals
Served Per School
Year

Buses Travel
4,400+ Miles
Per School Day
28 Routes

**4,000+ Technology
Devices**
Used Throughout the
District Each Day

Gifted Students
17.6%
Students w/Disabilities
13.1%
English Learners
1.3%



Rural District which is part of 6 counties: Fayette, Pickaway, Clinton, Ross, Highland, Madison

BOARD OF EDUCATION



Rob Dawson



Jacklyn Farrens



Bryan McCoy



Dave Miller



Lindsey Worley

DISTRICT LEADERSHIP TEAM



Front Row (left to right)

Sunny Cummings, ES Assistant Principal
Ann Boerger, Curriculum Director (Grades 6-12)
Michelle Teis, MS Assistant Principal
Susie Berry, Gifted Coordinator
Nicole Fatica-Mavis, Curriculum Director (Grades K-5)
Amy Gustin, Instructional Technology Director
Amy O'Dierno, Special Education Director
Kylie Lanman, Student Services & Operations Coordinator
Robyn Huddle, Elementary Special Education Supervisor
Deanna Park, Food Service Director (not pictured)

Back Row (left to right)

Bryan Sheets, HS Principal
Tom Dean, Other Administrator
Jason Cline, Assistant Transportation Supervisor
Justin Lanman, ES Principal
Eric Tattersal, ES Assistant Principal
Rob Enochs, Assistant Superintendent
Kim Pittser, Superintendent
Cari Wilson, Treasurer
Ryan Davis, HS Assistant Principal
Zach Coe, Maintenance Supervisor
Jason Binegar, MS Principal
Jack Anders, Transportation & Safety Director
Aaron Hammond, Athletic Director

STRATEGIC PLAN

2020-2025

Teaching and Learning

Strategy 1

We will develop systems and practices in order to meet the needs of all students.

Strategy 2

We will create opportunities for students to explore, identify and acquire career field connections.

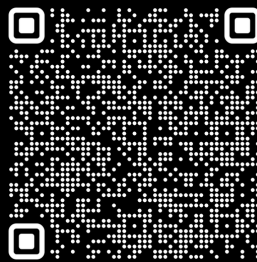
District Operations

Strategy 1

We will provide a healthy and safe learning environment for staff and students.

Strategy 2

We will maintain effective communication with all stakeholders.



Scan to View the Miami Trace Strategic Plan with Action Steps

MISSION STATEMENT

To provide a quality education, with opportunities and relationships, that cultivates success.

FISCAL STEWARDSHIP

Financial stability is essential for the success of any school district. Our district leadership utilizes the general fund's five-year forecast to plan expenditures to support regular operations. The Board also maintains a fiscal policy which includes two standards:

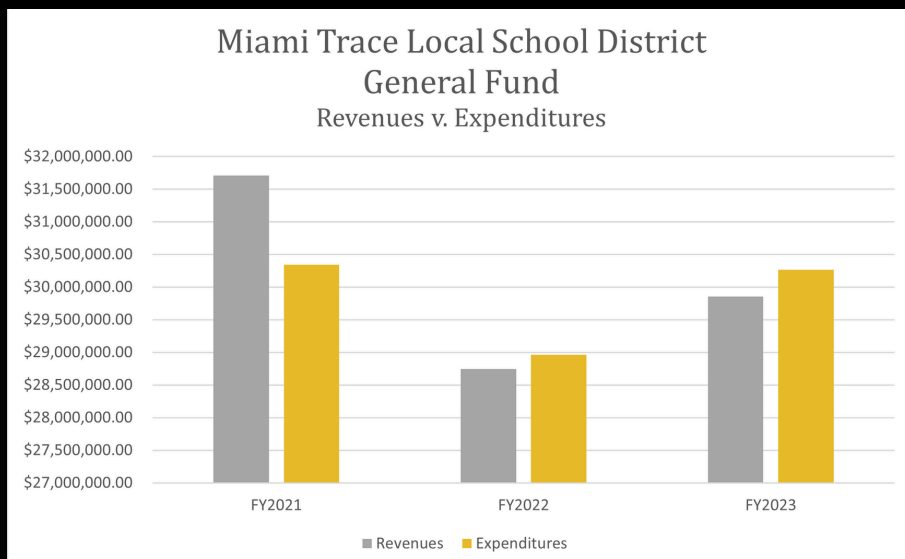
- A budget reserve equal to 5% of prior year revenues, excluding other financing sources
- A minimum unencumbered, unreserved carryover balance equal to two months of prior average monthly expenditures, excluding other financing uses

The Board has also established separate funds to provide for specific purposes and additional stability for the general fund:

- Employee self-insurance fund for management of health insurance claims
- Permanent improvement fund for buses and other capital assets
- Classroom facilities maintenance funds for each building
- A retirement benefits fund for employee exit expenditures

The Board, administration and staff appreciate the continued support of the taxpayers. It is what makes financial stability of Miami Trace Local Schools possible.

	Miami Trace	Similar Districts Average	State Average
Total Average Daily Membership (FY23)	2,407	1,489	2,401
Assessed Property Valuation Per Pupil (TY22[FY23])	\$ 264,775	\$ 258,119	\$ 232,719
Total Operating Expenditure Per Pupil (FY23)	\$ 13,969	\$ 14,114	\$ 15,428
Total Revenue Per Pupil (FY23)	\$ 15,370	\$ 16,024	\$ 17,114
State Revenue Per Pupil (FY23)	\$ 5,974	\$ 6,918	\$ 6,861
<i>Most recent data available from Ohio Department of Education - Cupp Report</i>			



Cari Wilson
Treasurer/CFO



DISTRICT ACCOLADES

- ★ Featured by Business View Magazine as one of the top school districts in Ohio
- ★ All buildings earned a 4 out of 5 Star Rating on the State Report Card
- ★ Purple Star Award designation, Middle School and High School
- ★ Ranked among the Top 100 *Best Places to Teach* in Ohio, according to Niche.com



DISTRICT SPONSORS

Quali-Tee Design Sportswear
Tony's Welding & Fabrication
Vermeer
Adena Fayette Medical Center
Nick Epifano - McDonald's
John Hinderer Ford
MT Athletic Boosters
Pepsi
Fayette Veterinary Hospital
First State Bank

Kirk's Furniture
Parrett Insurance
Pettit's Enterprises
Valero Renewable Fuels Company
Doug Marine All Brand Sales
Herron Financial Group
M&M Fasteners, LTD
Melvin Stone Company
Tomlinson Insurance

DISTRICT PARTNERS

Adena Fayette Medical Center
Community Action of Fayette County
Farm Bureau
Fayette County Board of DD
Fayette County Chamber of Commerce
Fayette County Community Action
Fayette County Public Health
Fayette County Sheriff's Department
Fayette County YMCA
Integrated Services of Behavioral Health

Hopewell Center - Region 14
MVECA
PATH Behavioral Healthcare
Pickaway Area Recovery Services
Rotary
Scioto Paint Valley
SOESC
Southern State Community College
The Counseling Source

MIAMI TRACE ELEMENTARY SCHOOL

Activities & Highlights

BY THE NUMBERS

1,120 students
130 staff members
6 grade levels (KG-5th)

ACTIVITIES

Biztown (Junior Achievement)
Cincinnati Children's Theater
Columbus Symphony Orchestra
Concerts and Musicals (1st, 3rd, 5th)
Fall Harvest Day
Field Trips
Great Kindness Challenge
One Book, One School
PTO Skating Parties
Start with Hello Week
VIP Student Dances



POSITIVE BEHAVIOR INTERVENTIONS AND SUPPORTS (PBIS)

Book Vending Machine
Hat Passes
Lunch Buddies
Panther Bucks

Panther Praise
Pizza with the Principals
Prize Machine
Tiered Reward System

STUDENT SERVICES

D.A.R.E. (Drug Abuse Resistance Education)

G.O.O.D. Program (Going On Or Defeated)

Mindful Music Moments

School Counseling Services

Social-Emotional Education

Too Good For Drugs (PARS, 3rd-4th grades)



MIAMI TRACE MIDDLE SCHOOL

Activities & Highlights

BY THE NUMBERS

615 students
67 staff members
3 grade levels (6th-8th)



ACTIVITIES

8th Grade Washington DC Field Trip
Book Club
Career Based Intervention Program
Career Expo
Career Technical Agriculture
Concerts and Musicals
Field Trips
Middle School Athletics
Motivational Speakers
Real Money Real World
Student Council



POSITIVE BEHAVIOR INTERVENTIONS AND SUPPORTS (PBIS)

8th Grade Recognition
Athletic Presentations
iReady Incentive Drawings
Panther Praise

Panther Tokens
Pizza with the Principals
Quarterly Grade Level Incentives

STUDENT SERVICES

Annual Student Safety Training
Panther Circle (Character Education Program)
Say Something Program
SOS (Signs of Suicide)



MIAMI TRACE HIGH SCHOOL

Activities & Highlights

BY THE NUMBERS

780 students
78 staff members
4 grade levels (9th-12th)



ACTIVITIES

Buckeye Boys and Girls State in partnership with American Legion Post 25
Career Technical Agriculture (Three Star National Chapter)
Concerts, Musicals, and Plays
Construction Trades / SkillsUSA
Graphic Design
Miami Trace Marching Band
National Honor Society
PLTW Computer Science Pathway
Prom and Homecoming Dances
Quick Recall Team
Rotary Speech Contest
Superintendent Advisory Council
Student Government
Video Production

STUDENT CLUBS & ORGANIZATIONS

Art Club, Book Club, Drama Club, FCA, FCCLA, French Club, Key Club,
MITRA Yearbook, Science Club, Spanish Club

POSITIVE BEHAVIOR INTERVENTIONS AND SUPPORTS (PBIS)

Quarterly Excellent Attendance Recognition & Incentives
Recognition of Honor Roll and Honorable Mention

STUDENT SERVICES

ABC - Academic Booster Club

Athletic Boosters Club

Band Boosters

SOS (Signs of Suicide)

Stop it App (Anonymous Student Reporting)

Class of 2023

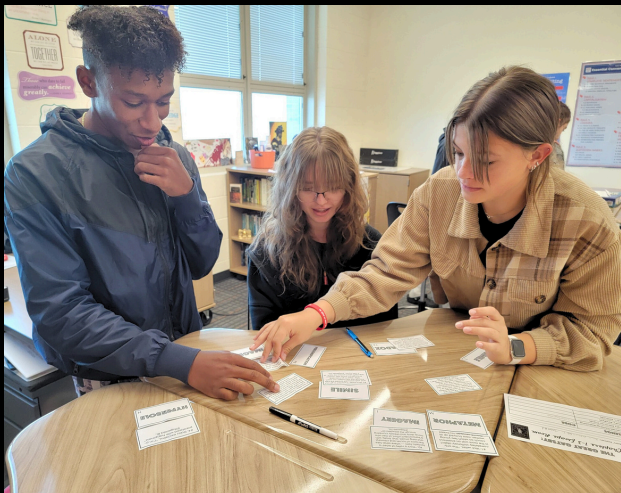
\$240,000+ distributed in scholarships
165+ students enrolled in Post-Secondary
26 students earned Honors Diplomas



ACADEMICS

Elementary Curriculum

- Online Curriculum: SAVVAS Envision Math, McGraw Hill Reading Wonders, SAVVAS Interactive Science, Gallopade Social Studies, Reflex Math, and Lexia Core 5
- Elementary Learning Experiences: Art, Physical Education, Music, Technology Literacy, Social Emotional Learning, and Cooperative Learning
- Elementary Social Emotional Learning Extension: Mindful Music
- Elementary Parent Engagement Events: Literacy Night and Science Night



Secondary Curriculum

- Middle School Online Curriculum: HMH Into Literature, McGraw Hill Discovering Our Past Social Studies, Savaas Envision Math, and Savaas Interactive Science
- High School Online Curriculum: Savaas MathXL, McGraw Hill StudySync ELA, McGraw Hill Glencoe Health, Savaas Mastering Chemistry, and Savaas Online Social Studies, and Apex
- Middle School Learning Experiences: Band, Career Based Intervention, Career Technical Agricultural Classes, Choir, General Music, Health, Panther T.E.A.M., Physical Education, PLTW Gateway Courses, Visual Arts, World Cultures
- Middle School Course Offerings for High School Credit: Algebra I
- High School Learning Experiences: Band, Choir, Career Technical Agricultural Classes, Family and Consumer Sciences, Construction Trades Program, Graphic Design, PLTW Computer Science Pathway, Video Productions/Broadcasting, Work Based Learning
- 9 AP Course Offerings, 5 CCP Course Offerings taught by MTHS staff members

SCHOOL SAFETY

Miami Trace Local School District places safety for all as the top priority. In collaboration with the Fayette County Sheriff's Office, our campus maintains a full-time resource officer. In addition, the District has a full-time Transportation and Safety Director. These individuals work closely with staff and students to ensure all safety measures are in place to create a safe and healthy learning environment.



HEALTH & WELLNESS

MIAMI TRACE WELLNESS COMMITTEE

Our schools play an important role in promoting the health and wellness of all staff and students. The District Wellness Committee uses the Whole Child Framework, supported by the Department of Education and Workforce. Efforts are concentrated on mental health, social and emotional well-being, and physical health. Miami Trace continues to partner with external organizations to support these efforts.

MIAMI TRACE DIGITAL WELLNESS COMMITTEE

Miami Trace is committed to digital wellness and has created a Digital Wellness Committee. This team guides the use of technology throughout our district and the target areas of their plan include:

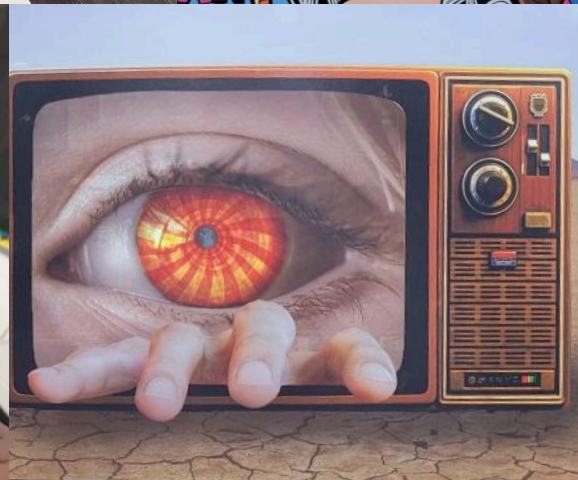
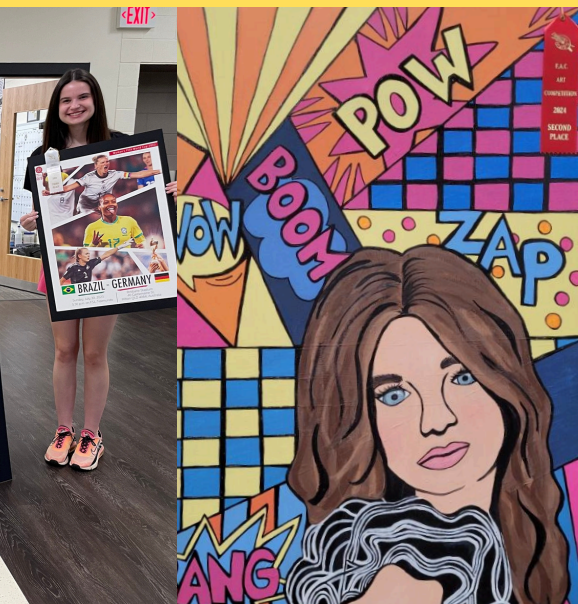
- Educate and Empower Students
- Enhance and Engage the Classroom
- Educate and Support Families
- Extend Digital Communications

MIAMI TRACE FOOD SERVICE

Food Service Program Annual Approximation

- MTES: approximately 60,000 breakfast meals and 107,000 lunch meals served per year
- MTMS: approximately 11,500 breakfast meals and 52,000 lunch meals served per year
- MTHS: approximately 12,000 breakfast meals and 32,500 lunch meals served per year

FINE ARTS



PERFORMING ARTS



ATHLETICS

Athletic Participation

Female Students
71%

Male Students
68%

Athletic Offerings

High School Sports Teams

Baseball, Basketball, Bowling, Cheerleading, Cross Country, Football, Golf, Soccer, Softball, Gymnastics, Swim, Tennis, Track, Volleyball, Wrestling

Middle School Sports Teams

Basketball, Cheerleading, Cross Country, Football, Soccer, Track, Volleyball, Wrestling



Miami Trace
Washington Court House
Greenfield McClain
Hillsboro
Chillicothe
Jackson





FACILITIES

The school district's 133-acre campus houses an elementary school, middle school, high school, learning center, transportation complex, administrative office building, and maintenance center. It boasts diverse athletic facilities like a football/soccer complex with artificial turf, baseball and softball fields, a five-court tennis complex, and ample practice fields. Additionally, there's a dedicated area for vocational agricultural programs, including farming test plots and related curricular activities.



Miami Trace District Office

Opened: November 2009
Size: 7,179 square feet

- Consists of multiple district administrative offices, treasury department offices, and board room
- Utilizes geo-thermal energy for heating and cooling



Miami Trace Bus Garage

Opened: October 2010
Size: 9,241 square feet

- Consists of transportation offices, four-bay transportation garage, maintenance office, and storage area
- Facility includes tire balancing unit, tire mount machine, and bus lift



Miami Trace Learning Center

Opened: August 2019
Size: 7,600 square feet

- Grades K-12 | Houses behavioral unit classrooms for students with special needs
- Provides alternative education programs for at-risk students
- Offers full-time mental health therapist who provides both individual and small group therapy sessions
- Houses community room for external agencies and community organizations to conduct meetings and activities that support the attending students



Miami Trace Elementary School

Opened: August 2008

Size: 141,000 square feet

- Grades K-5 | Consists of 6 grade-level wings
- Utilizes geothermal energy for heating and cooling
- Includes large gymnasium with full-sized basketball court



Miami Trace Middle School

Opened: February 2011

Size: 91,000 square feet

- Grades 6-8
- Achieved LEED (Leadership in Energy and Environmental Design) GOLD status for the use of green building products and energy savings
- Utilizes a 45kw solar panel energy system and geothermal energy for heating and cooling



Miami Trace High School

Opened: February 2019

Size: 162,000 square feet

- Grades 9-12 | Provides flexible open learning spaces
- Achieved LEED (Leadership in Energy and Environmental Design) SILVER status for the use of green building products and energy savings
- Utilizes geo-thermal energy for heating and cooling
- Features an 810-seat auditorium
- Includes artificial turf field, 2400-seat home grandstand, concessions, and restrooms



CONNECT WITH US



Miami Trace Panthers,
Families, & Community,
you're the reason we're here

which is why staying
connected with you is so
important to us!



Website

Find District Events, News, and Resources



School App

District Events, News, and Resources at Your Fingertips



The Panther Post

Digital Newsletter Highlighting Significant District Information and Celebrations



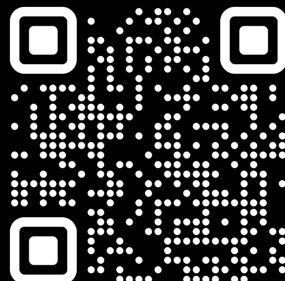
The Panther Cast

District Podcast, Where We Discuss All Things That Make Panther Nation MT Proud



Social Media

Follow Us On Facebook, Instagram, and YouTube





MIAMI TRACE LOCAL SCHOOLS

3818 State Route 41 NW
Washington Court House, Ohio 43160
(740) 335-3010

www.miamitrace.k12.oh.us