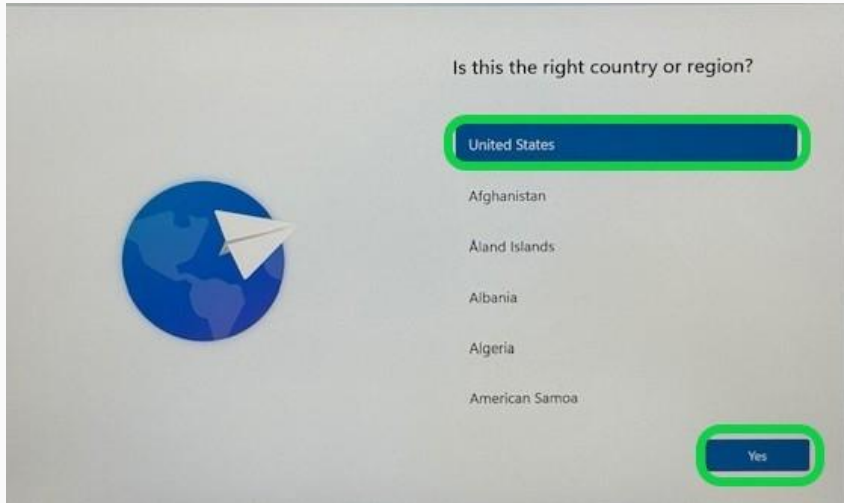


HP Probook Setup Instructions



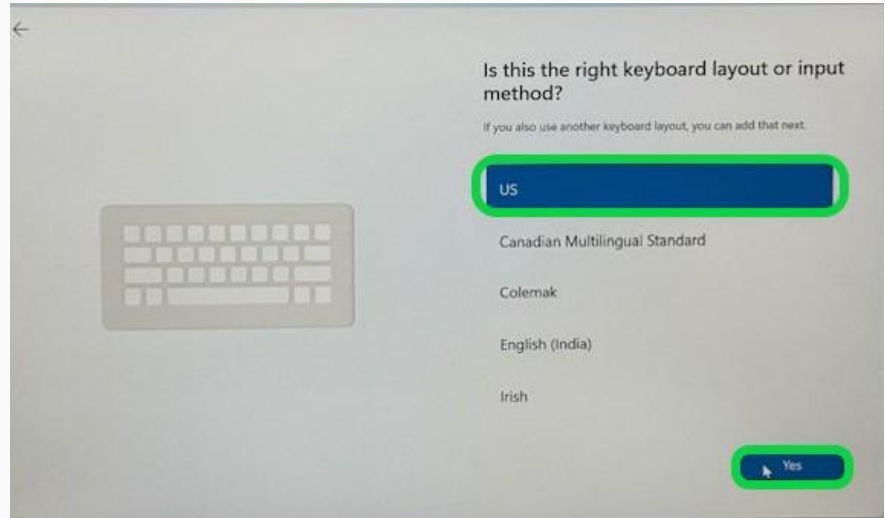
Step 1

Select United States then Yes



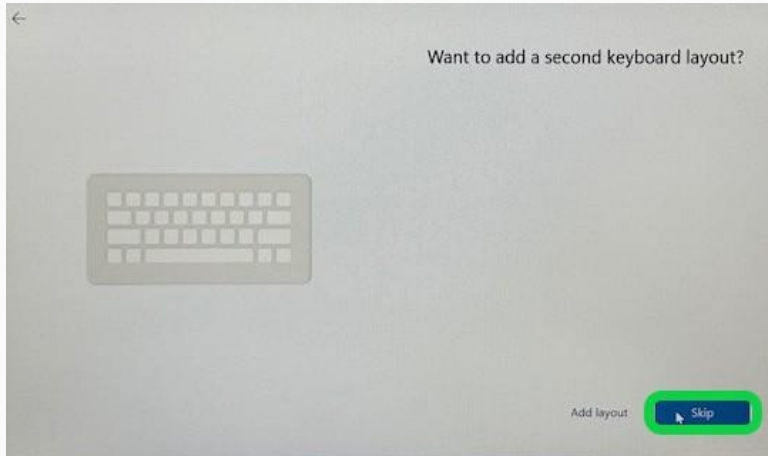
Step 2

Select US then Yes



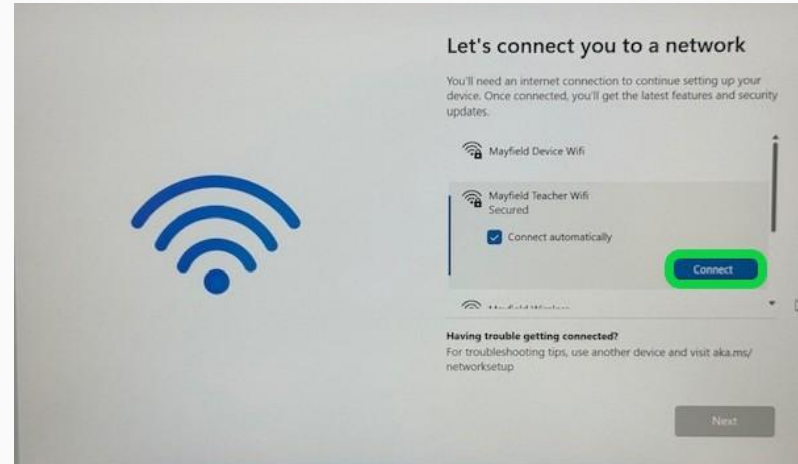
Step 3

Select Skip



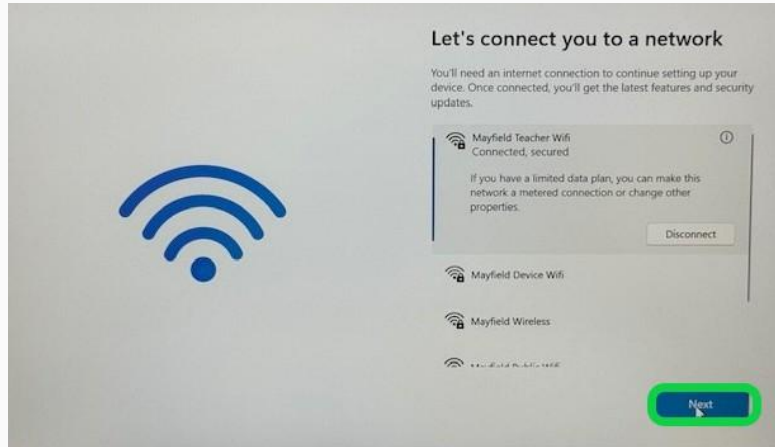
Step 4

Choose Your Home Wifi from available Networks -> Click Connect



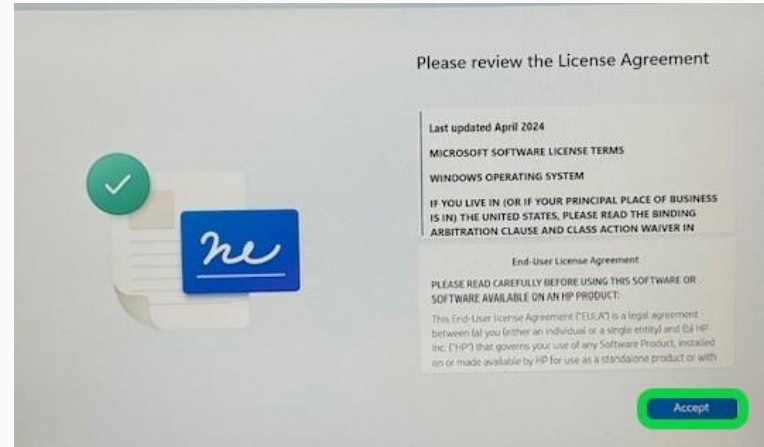
Step 5

Select Next



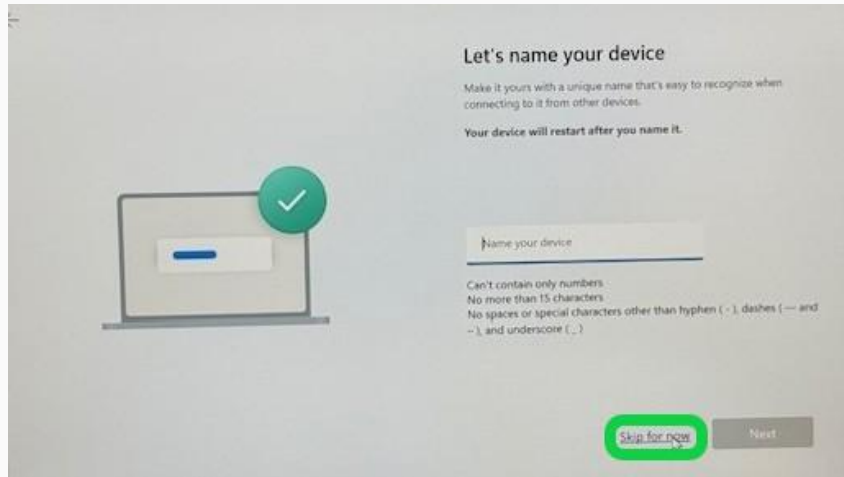
Step 6

Accept the User Agreement



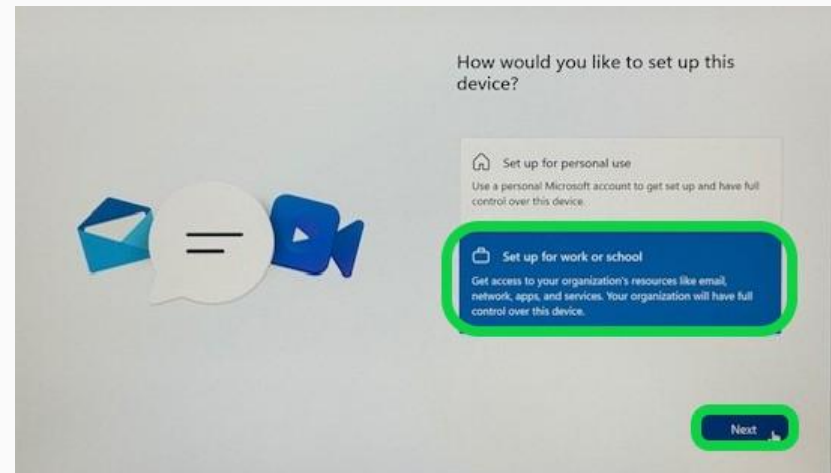
Step 7

Click on Skip for Now



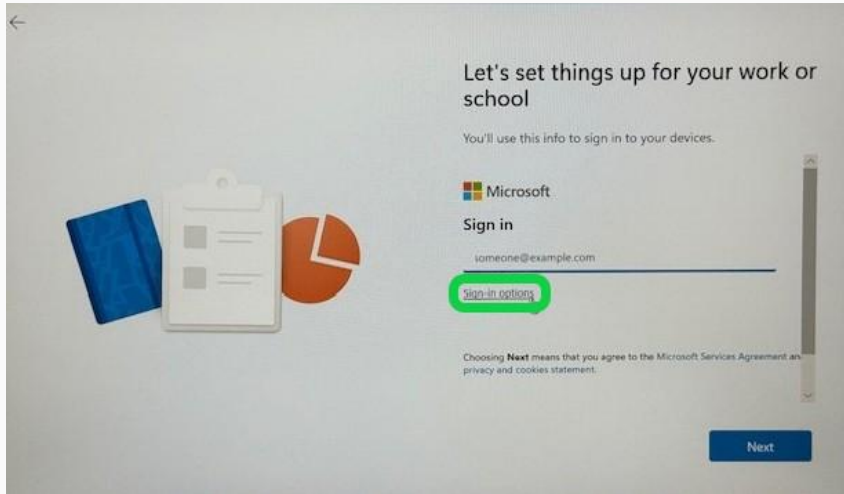
Step 8

Choose Setup for Work or School



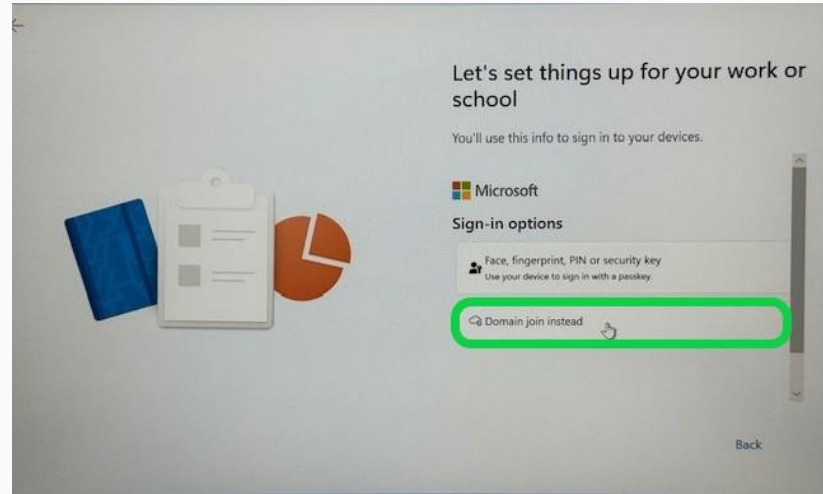
Step 9

Select Sign-In Options



Step 10

Choose Domain Join Instead



Step 11

Enter Your Name -> Click Next

Who's going to use this device?

You'll use this name to sign in to your device.

Enter your name

Test Device

Even better, use an online account.

Next

Step 12

IT Recommends leaving password blank (Optional) -> Click Next

Create a super memorable password

Make sure to pick something you'll absolutely remember.

Enter a password

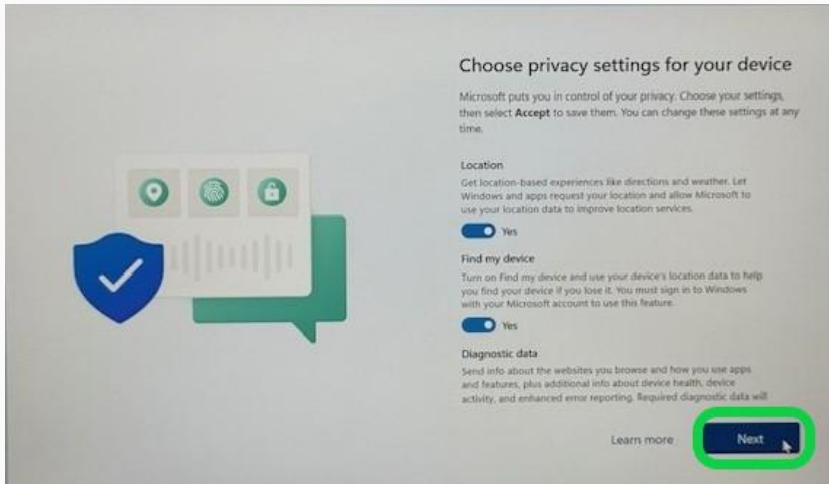
Password

Even better, use an online account.

Next

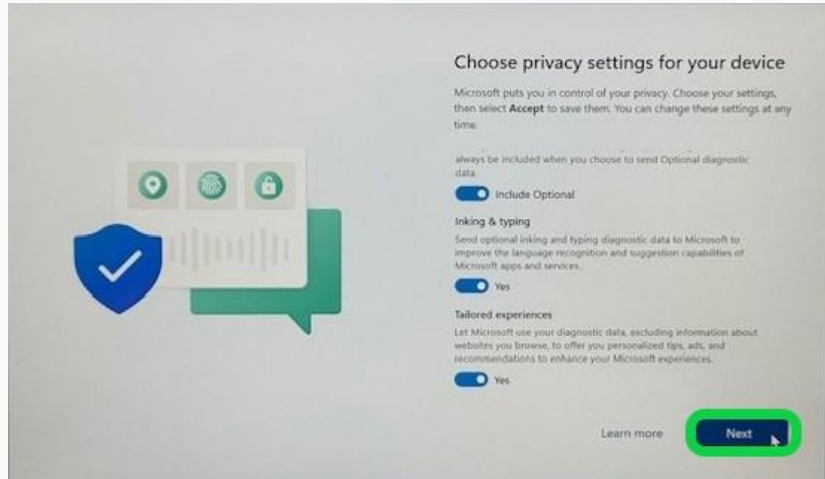
Step 13

Select Next (optional settings)



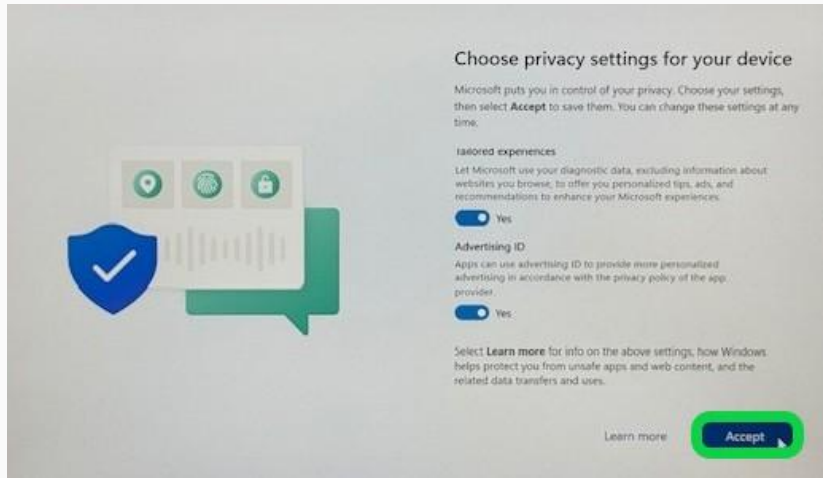
Step 14

Select Next (optional settings)



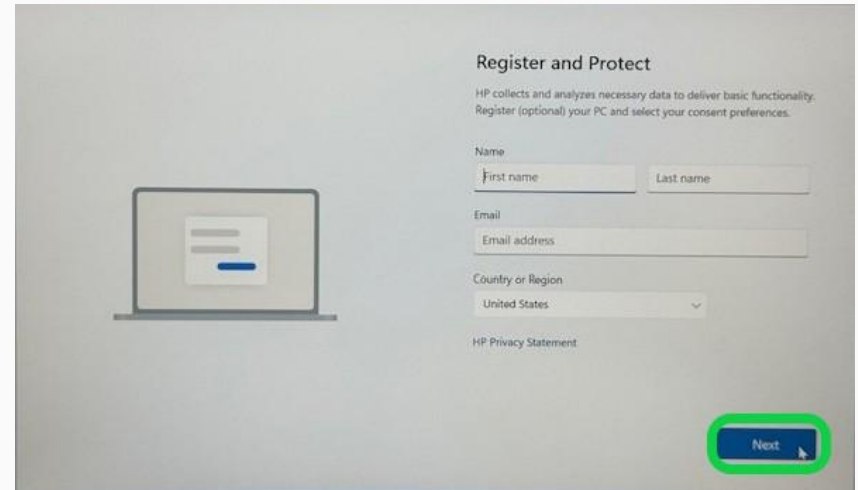
Step 15

Accept Privacy Settings (Recommended)



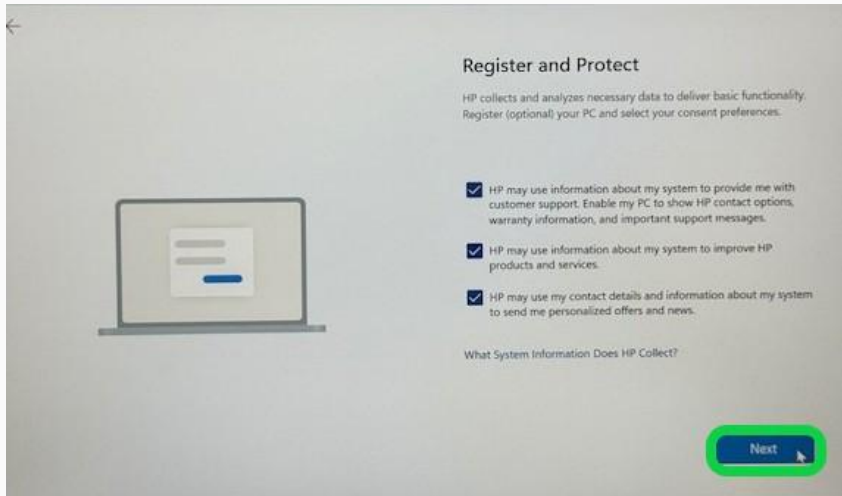
Step 16

Click Next (Optional to Register Device)



Step 17

Accept Register and Protect ->Click Next (Optional)



Your Initial Device Setup is Now Complete

- Updates will automatically begin running on your device (can take 10-15 minutes to complete).
- Upon completion your desktop will appear.
- Refer to [Staff Device Information](#) for additional setup guides.