

Audio-Visual Production 1

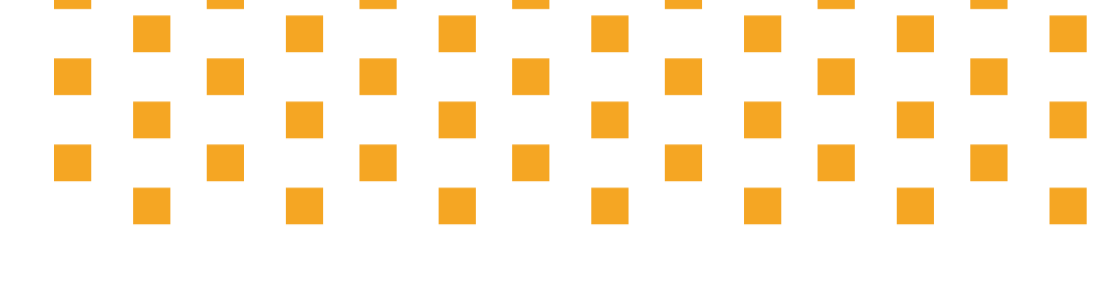
Class Syllabus

Mr. John Orman
Room 1052
ext: 1043
jorman1@mauryk12.org



Who is Mr. Orman??

I'm John Orman and I am very excited to be your A/V Production teacher here at Columbia Central High School. You will have me all three years. I've been in the entertainment business working on film, television, film festivals, and screenwriting conferences for 14 years and I absolutely love it! I am a proud alumnus of CHS and went through the A/V program - then called "Mass Comm" when I was in school here. It had a huge, positive impact on my life and I am excited to pass my enthusiasm and love for this program on to you!



01 Audio-Visual Production 1



A/V Production I is a foundational course for students interested in A/V (audio/visual) production occupations.

Students will establish basic skills in operating cameras, basic audio equipment, and other production equipment. Standards in this course include career exploration, an overview of the history and evolution of A/V production, and legal issues affecting A/V production.

02 Curriculum Objectives

Objective 1

Explain and complete the phases of the production process including pre-production, production, and post-production

We will be using various Adobe programs as part of the production process, including: Premiere Pro and Audition.

Objective 2

Establish basic skills in operating cameras, basic audio equipment, and other production equipment.

We will be doing lots of PROJECTS in this class!

Objective 3

To have a general overview of the entertainment industry through a variety of perspectives.

Career exploration, an overview of the history and evolution of A/V production, and legal issues affecting A/V production.

03 A/V Production 1

9 weeks: Aug 7 - Oct 6

Weeks 1-2: Safety, Basic Production Concepts.

These weeks will likely be full of changing rosters. We will be going over state-required safety procedures and terms and roles within tv/film production.

Weeks 3-4: Sound and PSA

We will be starting our SOUND UNIT, where we examine sound recording techniques (are any of you interested in music production? You can use these skills!). Public Service Announcement project.

Week 5: Intro to Radio/Podcasting

We will examine the history of radio and go into how that has more or less evolved into Podcasting. We will workshop our Podcasting Project.

Week 6-7: Recording the Podcast

You will be recording your podcast in segments: Intro, Main Segment, Outro. You will edit any sound FX you need and any music into it as well.

Week 8: Foley Introduction

We will cover what foley artists do and you will be introduced to your foley project. You will pick your scene and begin the process of getting your project together.

Week 9: Finishing Foley

You need to continue working on your foley project with the goal to be finished by the end of the 9 weeks.

04

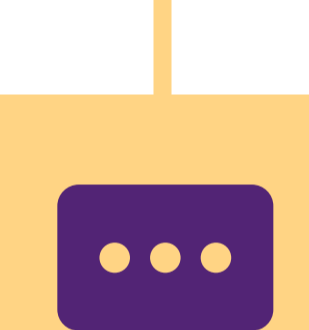
Equipment, Programs and Suggested Supplies

We will be using a combination of computer programs and Audio-Visual equipment to complete our projects.



Paper and Pencil

Please try and bring normal school supplies.



TEAMS

All projects will be given and turned in through TEAM unless otherwise stated.



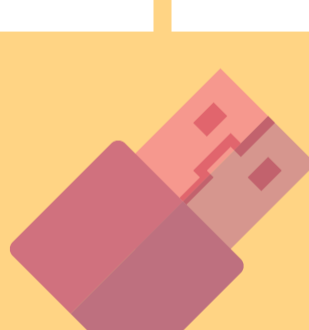
Computer with ADOBE Premiere Pro

We have 25 new iMacs with Adobe Creative Suite. We will be using them in class for projects



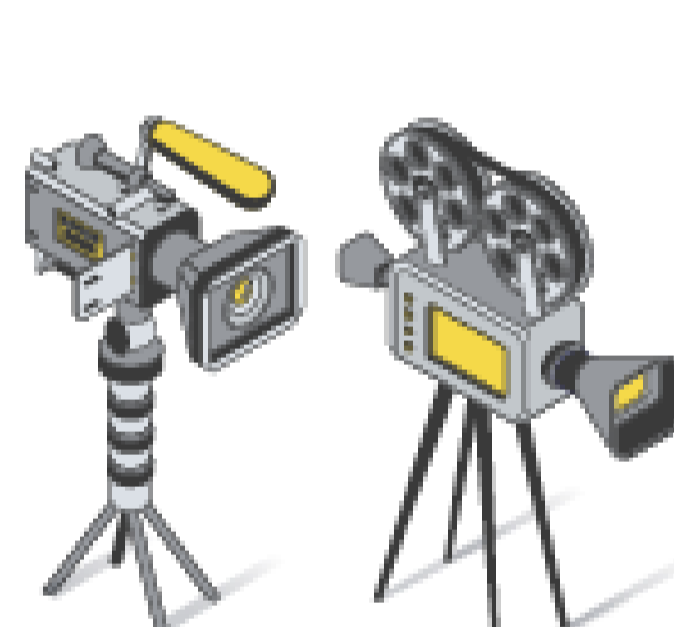
Headset or Earphones

I have headphones in the room, though if you want to bring your own, that is fine, too.



USB Drive or SD Card (recommended)

It will be easier to keep up with your media if you can have your own storage devices.



05 Classroom Expectations

- Be respectful of each other.
- Be respectful of our equipment: if our equipment gets damaged, they aren't going to let us have more any time soon.
- No Food or Drinks around the computers or the equipment.
- Absolutely no food in the audio room or the equipment room.
- Per the STUDENT HANDBOOK, no bathroom trips during the first or last 10 minutes of class.
- Do not go to the vending machines during class.

Professionalism

You will be graded every week on professionalism, these criteria include:

- Having your cellphone put away during class (unless otherwise allowed).
- Being on-time and in your seat for the bell.
- Being prepared for class - if you need paper or pencil, ask me at the beginning of class. DO NOT WAIT until I come over to you to see why you aren't doing work to tell me you don't have anything to write with.
- Being RESPECTFUL and COURTEOUS to your fellow classmates and your teacher (ME!) You don't have to be everyone's best friend, but you do have to treat everyone with respect.

06 Individual Work

Bell Work

You will have BELL WORK every day. It will be graded every week and I will look for EFFORT and COMPLETION - This should be an easy grade.

Quizzes

There will be quizzes after every project to check for basic understanding of the concepts involved in the production.

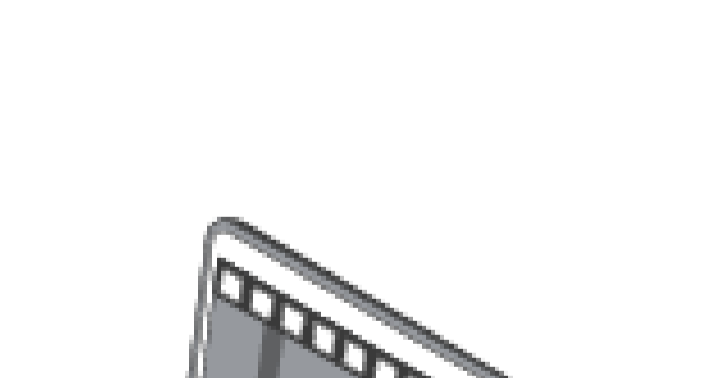
Exams

There will be two major exams - one at the end of each semester. You can be exempt from the final exam at the end of the year depending on attendance, grades and behavior.

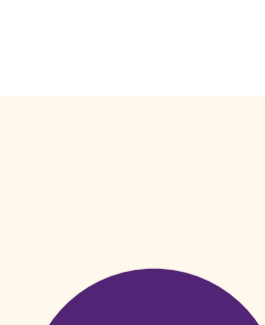
07 Projects

Projects will (usually) be completed in groups

- PSA
- Podcast (one each 9 weeks)
- Foley
- Commercial
- Music Video
- Short, Short Film
- Social Media Intro Project
- Sport Reporting Project
- Script Writing Project



08 Grading Components and System



Your course grader will be determined through these assessments

Graded Activities • Projects • Final Exam

Components	Projects	Exams/Quizzes	Classwork	Professionalism	Participation
Percentage	35%	15%	20%	20%	10%
Qualification	Rubric	Grade	Completion	Grade	Effort

Components	Projects	Exams/Quizzes	Classwork	Professionalism	Participation
Percentage	35%	15%	20%	20%	10%
Qualification	Rubric	Grade	Completion	Grade	Effort

Components	Projects	Exams/Quizzes	Classwork	Professionalism	Participation
Percentage	35%	15%	20%	20%	10%
Qualification	Rubric	Grade	Completion	Grade	Effort

Components	Projects	Exams/Quizzes	Classwork	Professionalism	Participation
Percentage	35%	15%	20%	20%	10%
Qualification	Rubric	Grade	Completion	Grade	Effort

Components	Projects	Exams/Quizzes	Classwork	Professionalism	Participation
Percentage	35%	15%	20%	20%	10%
Qualification	Rubric	Grade	Completion	Grade	Effort

Components	Projects	Exams/Quizzes	Classwork	Professionalism	Participation
Percentage	35%	15%	20%	20%	10%
Qualification	Rubric	Grade	Completion	Grade	Effort

Components	Projects	Exams/Quizzes	Classwork	Professionalism	Participation
Percentage	35%	15%	20%	20%	10%
Qualification	Rubric	Grade	Completion	Grade	Effort

Components	Projects	Exams/Quizzes	Classwork	Professionalism	Participation
Percentage	35%	15%	20%	20%	10%
Qualification	Rubric	Grade	Completion	Grade	Effort

Components	Projects	Exams/Quizzes	Classwork	Professionalism	Participation
Percentage	35%	15%	20%	20%	10%
Qualification	Rubric	Grade	Completion	Grade	Effort

Components	Projects	Exams/Quizzes	Classwork	Professionalism	Participation
Percentage	35%	15%	20%	20%	10%
Qualification	Rubric	Grade	Completion	Grade	Effort

Components	Projects	Exams/Quizzes	Classwork	Professionalism	Participation
Percentage	35%	15%	20%	20%	10%
Qualification	Rubric	Grade	Completion	Grade	Effort

Components	Projects	Exams/Quizzes	Classwork	Professionalism	Participation
Percentage	35%	15%	20%	20%	10%
Qualification	Rubric	Grade	Completion	Grade	Effort

Components	Projects	Exams/Quizzes	Classwork	Professionalism	Participation
Percentage	35%	15%	20%	20%	10%
Qualification	Rubric	Grade	Completion	Grade	Effort

Components	Projects	Exams/Quizzes	Classwork	Professionalism	Participation
Percentage	35%	15%	20%	20%	10%
Qualification	Rubric	Grade	Completion	Grade	Effort

Components	Projects	Exams/Quizzes	Classwork	Professionalism	Participation
Percentage	35%	15%	20%	20%	10%
Qualification	Rubric	Grade	Completion	Grade	Effort

Components	Projects	Exams/Quizzes	Classwork	Professionalism	Participation
Percentage	35%	15%	20%	20%	10%
Qualification	Rubric	Grade	Completion	Grade	Effort

Components	Projects	Exams/Quizzes	Classwork	Professionalism	Participation
Percentage	35%	15%	20%	20%	10%
Qualification	Rubric	Grade	Completion	Grade	Effort

Components	Projects	Exams/Quizzes	Classwork	Professionalism	Participation
Percentage	35%	15%	20%	20%	10%
Qualification	Rubric	Grade	Completion	Grade	Effort

Components	Projects	Exams/Quizzes	Classwork	Professionalism	Participation
Percentage	35%	15%	20%	20%	10%
Qualification	Rubric	Grade	Completion	Grade	Effort

Components	Projects	Exams/Quizzes	Classwork	Professionalism	Participation
Percentage	35%	15%	20%	20%	10%
Qualification	Rubric	Grade	Completion	Grade	Effort

Components	Projects	Exams/Quizzes	Classwork	Professionalism	Participation
Percentage	35%	15%	20%	20%	10%
Qualification	Rubric	Grade	Completion	Grade	Effort

Components	Projects	Exams/Quizzes	Classwork	Professionalism	Participation
Percentage	35%	15%	20%	20%	10%
Qualification	Rubric	Grade	Completion	Grade	Effort

Components	Projects	Exams/Quizzes	Classwork	Professionalism	Participation
Percentage	35%	15%	20%	20%	10%
Qualification	Rubric	Grade	Completion	Grade	Effort

Components	Projects	Exams/Quizzes	Classwork	Professionalism	Participation
Percentage	35%	15%	20%	20%	10%
Qualification	Rubric	Grade	Completion	Grade	Effort

Components	Projects	Exams/Quizzes	Classwork	Professionalism	Participation
Percentage	35%	15%	20%	20%	10%
Qualification	Rubric	Grade	Completion	Grade	Effort

Components	Projects	Exams/Quizzes	Classwork	Professionalism	Participation
Percentage	35%	15%	20%	20%	10%
Qualification	Rubric	Grade	Completion	Grade	Effort

Components	Projects	Exams/Quizzes	Classwork	Professionalism	Participation
Percentage	35%	15%	20%	20%	10%
Qualification	Rubric	Grade	Completion	Grade	Effort

Components	Projects	Exams/Quizzes	Classwork	Professionalism	Participation
Percentage	35%	15%	20%	20%	10%
Qualification	Rubric	Grade	Completion	Grade	Effort

Components	Projects	Exams/Quizzes	Classwork	Professionalism	Participation
Percentage	35%	15%	20%	20%	10%
Qualification	Rubric	Grade	Completion	Grade	Effort

Components	Projects	Exams/Quizzes	Classwork	Professionalism	Participation
Percentage	35%	15%	20%	20%	10%
Qualification	Rubric	Grade	Completion	Grade	Effort

Components	Projects	Exams/Quizzes	Classwork	Professionalism	Participation
Percentage	35%	15%	20%	20%	10%
Qualification	Rubric	Grade	Completion	Grade	Effort

Components	Projects	Exams/Quizzes	Classwork	Professionalism	Participation
Percentage	35%	15%	20%	20%	10%
Qualification	Rubric	Grade	Completion	Grade	Effort

Components	Projects	Exams/Quizzes	Classwork	Professionalism	Participation
Percentage	35%	15%	20%	20%	10%
Qualification	Rubric	Grade	Completion	Grade	Effort

Components	Projects	Exams/Quizzes	Classwork	Professionalism	Participation
Percentage	35%	15%	20%	20%	10%
Qualification	Rubric	Grade	Completion	Grade	Effort

Components	Projects	Exams/Quizzes	Classwork	Professionalism	Participation
Percentage	35%	15%	20%	20%	10%
Qualification	Rubric	Grade	Completion	Grade	Effort

Components	Projects	Exams/Quizzes	Classwork	Professionalism	Participation
Percentage	35%	15%	20%	20%	10%
Qualification	Rubric	Grade	Completion	Grade	Effort

Components	Projects	Exams/Quizzes	Classwork	Professionalism	Participation
Percentage	35%	15%	20%	20%	10%
Qualification	Rubric	Grade	Completion	Grade	Effort

Components	Projects	Exams/Quizzes	Classwork	Professionalism	Participation
Percentage	35%	15%	20%	20%	10%
Qualification	Rub				