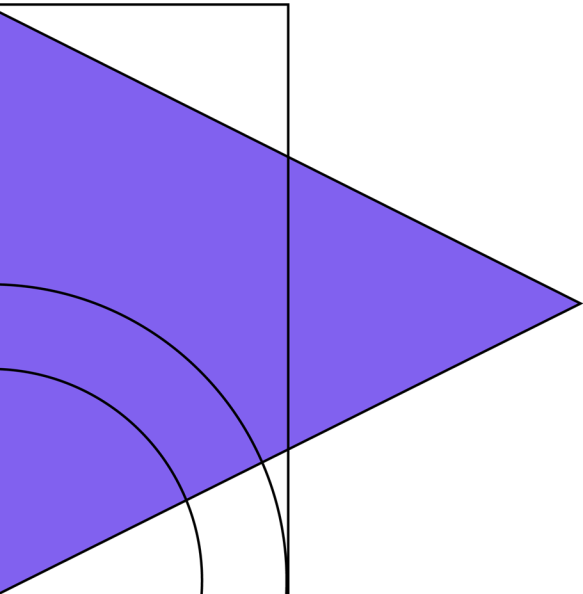
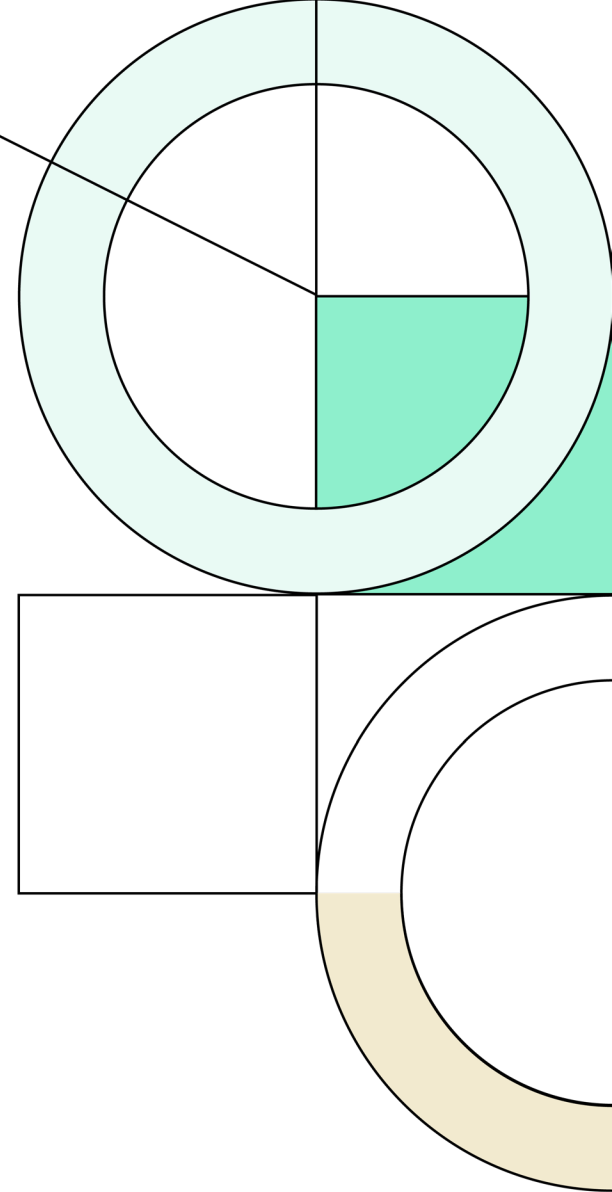




**Marble Falls
Independent
School
District**

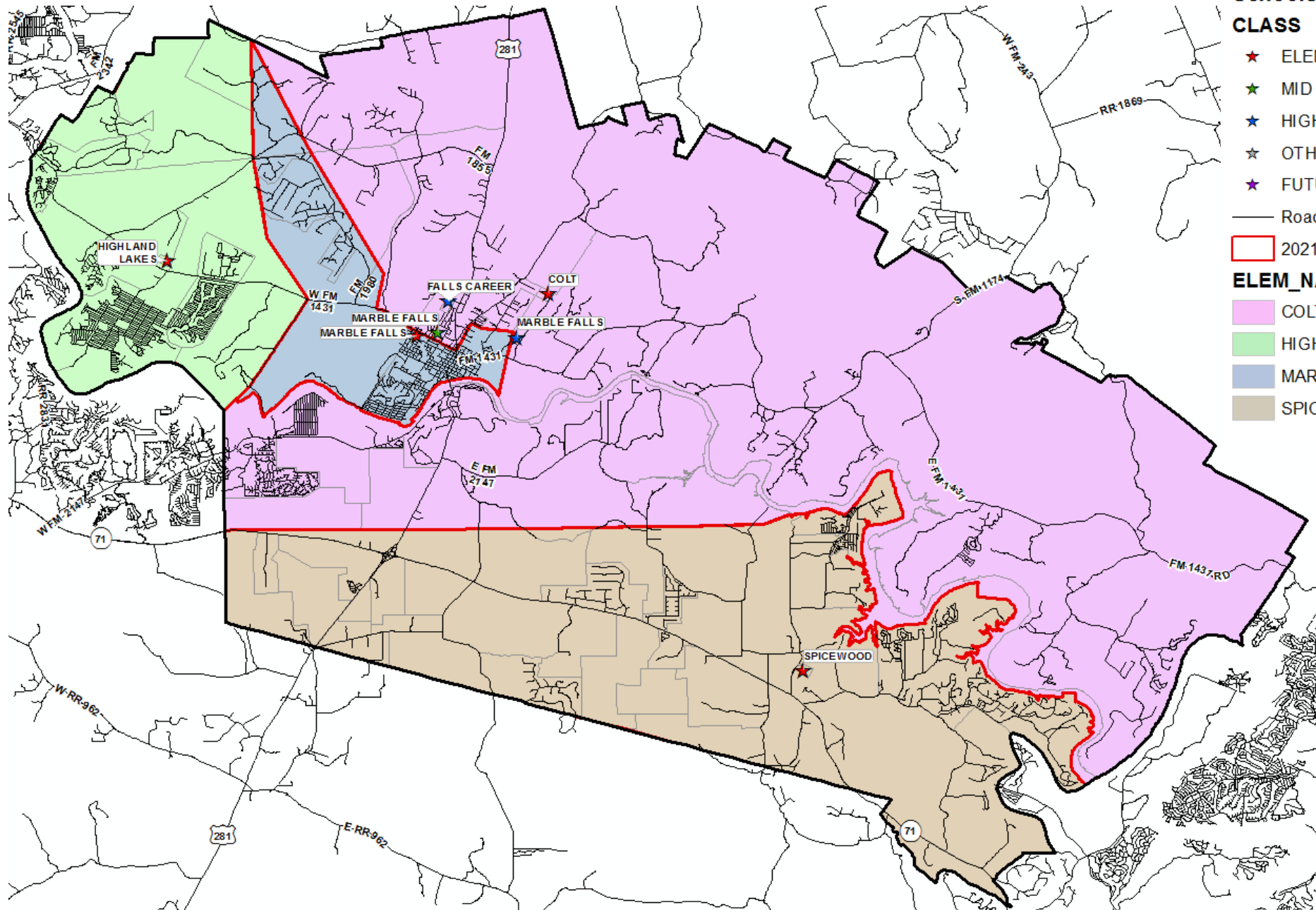
Summer 2022

Elementary Boundary
Proposal





Current Elementary Boundary



Legend

Schools

CLASS

- ★ ELEM
- ★ MID
- ★ HIGH
- ★ OTHER
- ★ FUTURE

— Roads_2021

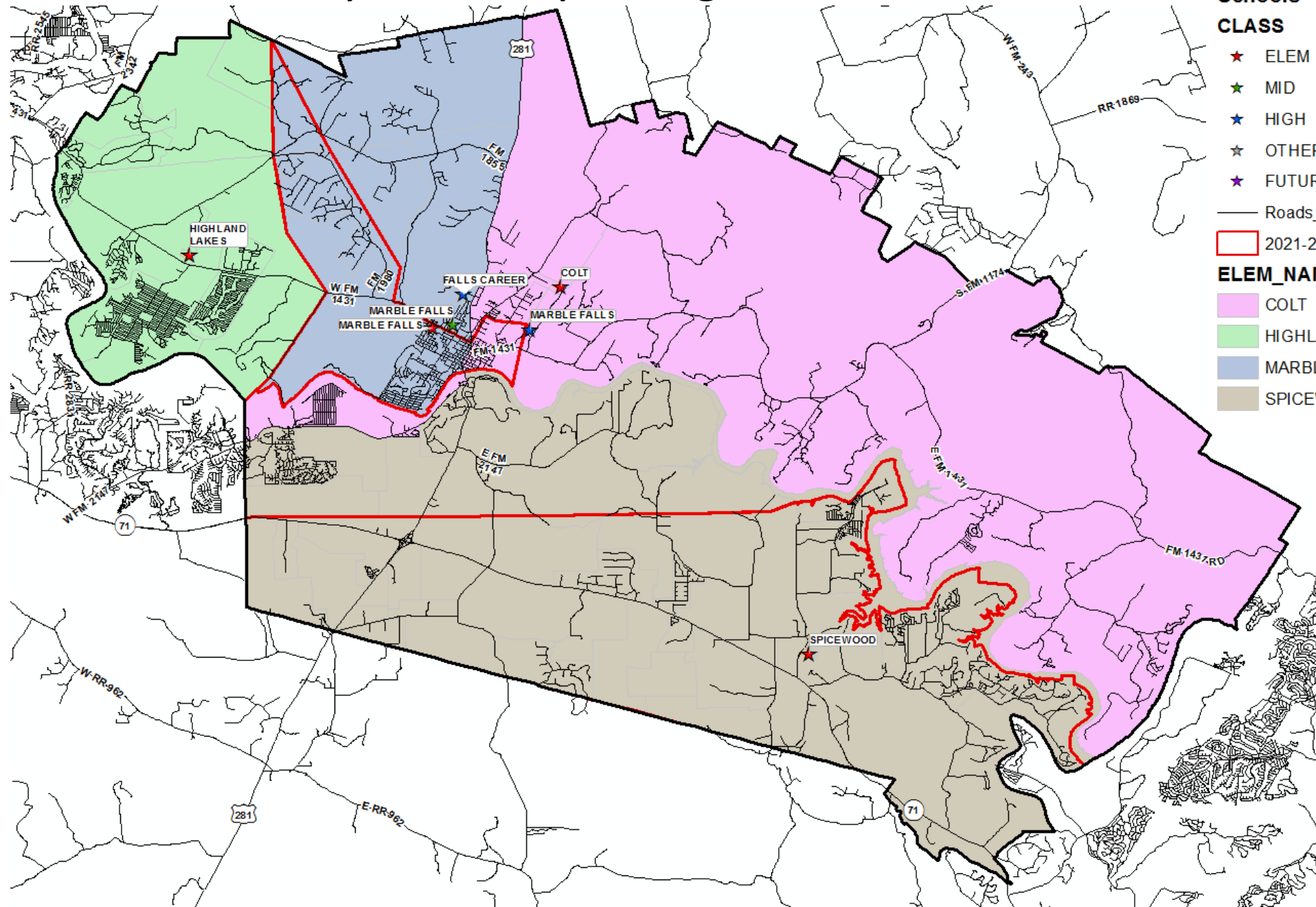
▭ 2021-22 Elementary Boundaries

ELEM_NAME

- ▭ COLT
- ▭ HIGHLAND LAKES
- ▭ MARBLE FALLS
- ▭ SPICEWOOD



Proposed Elementary Boundary Change



Legend

Schools

CLASS

- ★ ELEM
- ★ MID
- ★ HIGH
- ★ OTHER
- ★ FUTURE

— Roads_2021

▭ 2021-22 Elementary Boundaries

ELEM_NAME

- ▭ COLT
- ▭ HIGHLAND LAKES
- ▭ MARBLE FALLS
- ▭ SPICEWOOD



Ten Year Elementary Forecast by Campus Comparison

(400 – 800 new homes per year)

CURRENT BOUNDARY		Fall	ENROLLMENT PROJECTIONS									
Campus	Capacity		2021/22	2022/23	2023/24	2024/25	2025/26	2026/27	2027/28	2028/29	2029/30	2030/31
Colt Elementary School	650	582	615	687	753	809	887	972	1,083	1,194	1,331	1,495
Highland Lakes Elementary School	750	511	540	555	566	580	586	595	607	616	618	621
Marble Falls Elementary School	650	580	601	617	642	652	635	634	636	635	638	645
Spicewood Elementary School	450	203	219	245	289	338	410	509	612	689	762	840
ELEMENTARY SCHOOL TOTAL	2,500	1,876	1,975	2,104	2,250	2,379	2,518	2,710	2,938	3,134	3,349	3,601
Elementary Absolute Change		-73	99	129	146	129	139	192	228	196	215	252
Elementary Percent Change		-3.75%	5.28%	6.53%	6.94%	5.73%	5.84%	7.63%	8.41%	6.67%	6.86%	7.52%

Yellow box = over capacity

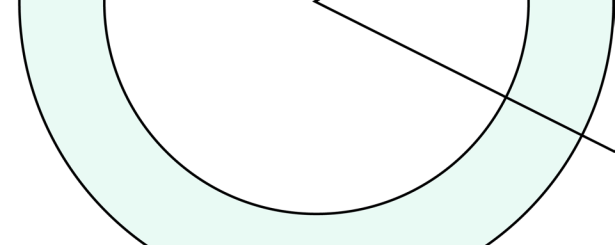
NEW BOUNDARY		Fall	ENROLLMENT PROJECTIONS									
Campus	Capacity		2021/22	2022/23	2023/24	2024/25	2025/26	2026/27	2027/28	2028/29	2029/30	2030/31
Colt Elementary School	650	582	563	577	583	588	590	595	603	607	613	622
Highland Lakes Elementary School	750	511	540	555	565	583	593	606	625	638	645	655
Marble Falls Elementary School	650	580	570	590	615	629	627	634	645	652	663	678
Spicewood Elementary School	450	203	304	394	490	580	700	859	1,068	1,257	1,468	1,720
ELEMENTARY SCHOOL TOTAL	2,500	1,876	1,977	2,116	2,253	2,380	2,510	2,694	2,941	3,154	3,389	3,675
Elementary Absolute Change		-73	101	139	137	127	130	184	247	213	235	286
Elementary Percent Change		-3.75%	5.38%	7.03%	6.47%	5.64%	5.46%	7.33%	9.17%	7.24%	7.45%	8.44%

Yellow box = over capacity



Ten Year Elementary Forecast by Campus Comparison

(250 – 500 new homes per year)




CURRENT BOUNDARY		Fall	ENROLLMENT PROJECTIONS									
Campus	Capacity	2021/22	2022/23	2023/24	2024/25	2025/26	2026/27	2027/28	2028/29	2029/30	2030/31	2031/32
Colt Elementary School	650	582	611	678	735	780	845	918	1,012	1,105	1,226	1,374
Highland Lakes Elementary School	750	511	538	549	557	567	568	571	576	581	581	582
Marble Falls Elementary School	650	580	597	609	629	634	612	605	603	598	599	605
Spicewood Elementary School	450	203	218	242	282	327	399	492	592	664	730	803
ELEMENTARY SCHOOL TOTAL	2,500	1,876	1,964	2,078	2,203	2,308	2,424	2,586	2,783	2,948	3,136	3,364
Elementary Absolute Change		-73	88	114	125	105	116	162	197	165	188	228
Elementary Percent Change		-3.75%	4.69%	5.80%	6.02%	4.77%	5.03%	6.68%	7.62%	5.93%	6.38%	7.27%

Yellow box = over capacity

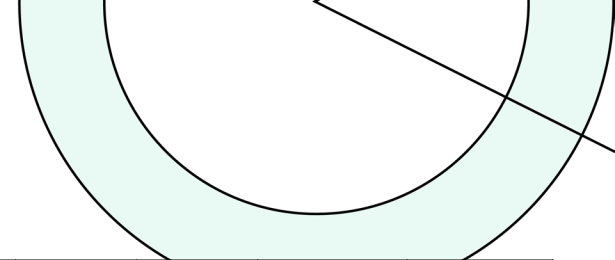
NEW BOUNDARY		Fall	ENROLLMENT PROJECTIONS									
Campus	Capacity	2021/22	2022/23	2023/24	2024/25	2025/26	2026/27	2027/28	2028/29	2029/30	2030/31	2031/32
Colt Elementary School	650	582	561	574	582	590	593	601	612	617	622	631
Highland Lakes Elementary School	750	511	538	552	567	586	596	613	632	648	655	665
Marble Falls Elementary School	650	580	567	583	611	628	624	630	641	649	657	669
Spicewood Elementary School	450	203	304	374	447	521	612	745	902	1,056	1,227	1,434
ELEMENTARY SCHOOL TOTAL	2,500	1,876	1,970	2,083	2,207	2,325	2,425	2,589	2,787	2,970	3,161	3,399
Elementary Absolute Change		-73	94	113	124	118	100	164	198	183	191	238
Elementary Percent Change		-3.75%	5.01%	5.74%	5.95%	5.35%	4.30%	6.76%	7.65%	6.57%	6.43%	7.53%

Yellow box = over capacity



Ten Year Forecast by Grade Level – New Boundary

(400 – 800 new homes per year)



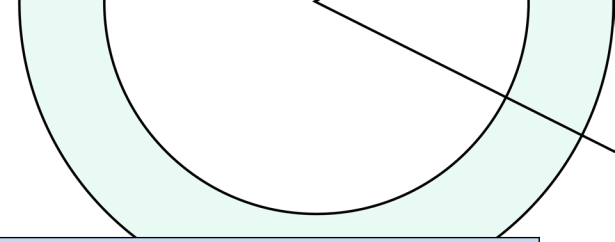
Year (Oct.)	EE	PK	K	1st	2nd	3rd	4th	5th	6th	7th	8th	9th	10th	11th	12th	Total	Total Growth	% Growth
2017/18	19	212	282	289	319	312	300	308	324	308	319	306	354	298	282	4,232		
2018/19	19	255	264	295	289	320	310	307	314	332	306	350	308	326	275	4,270	38	0.9%
2019/20	26	282	293	284	301	287	341	305	323	313	326	342	342	293	296	4,354	84	2.0%
2020/21	16	188	288	294	275	280	275	333	283	313	306	332	316	329	271	4,099	-255	-5.9%
2021/22	18	180	262	318	290	271	270	267	337	267	305	339	315	290	285	4,014	-85	-2.1%
2022/23	18	235	276	284	324	292	275	273	280	350	276	340	333	302	258	4,117	103	2.6%
2023/24	18	265	292	307	295	339	309	291	289	293	361	305	335	322	269	4,292	174	4.2%
2024/25	18	270	308	330	320	311	363	333	314	307	308	402	298	318	284	4,483	192	4.5%
2025/26	18	270	322	346	350	338	345	391	360	336	325	342	393	288	283	4,707	224	5.0%
2026/27	18	270	357	367	373	379	368	378	420	381	352	361	335	375	255	4,989	282	6.0%
2027/28	18	270	382	409	397	404	415	399	407	446	400	391	353	321	333	5,345	356	7.1%
2028/29	18	270	425	438	446	435	450	459	430	433	470	445	382	338	284	5,723	378	7.1%
2029/30	18	270	455	484	471	486	478	492	494	456	455	521	434	365	299	6,178	455	7.9%
2030/31	18	270	482	516	524	515	538	526	530	525	480	506	507	412	324	6,672	494	8.0%
2031/32	18	270	524	554	561	579	573	596	566	563	552	533	492	479	366	7,227	555	8.3%

Yellow box = largest grade per year
Green box = second largest grade per year



Ten Year Forecast by Campus – New Boundary

(400 – 800 new homes per year)



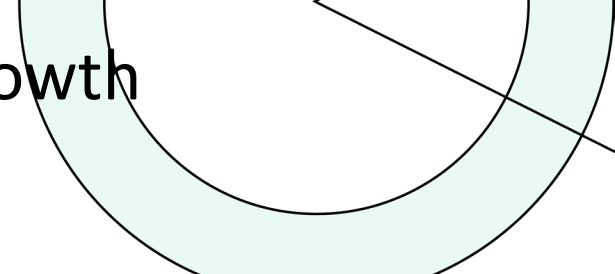
Campus	Capacity	Fall	ENROLLMENT PROJECTIONS									
		2021/22	2022/23	2023/24	2024/25	2025/26	2026/27	2027/28	2028/29	2029/30	2030/31	2031/32
Colt Elementary School	650	582	563	577	583	588	590	595	603	607	613	622
Highland Lakes Elementary School	750	511	540	555	565	583	593	606	625	638	645	655
Marble Falls Elementary School	650	580	570	590	615	629	627	634	645	652	663	678
Spicewood Elementary School	450	203	304	394	490	580	700	859	1,068	1,257	1,468	1,720
ELEMENTARY SCHOOL TOTAL	2,500	1,876	1,977	2,116	2,253	2,380	2,510	2,694	2,941	3,154	3,389	3,675
Elementary Absolute Change		-73	101	139	137	127	130	184	247	213	235	286
Elementary Percent Change		-3.75%	5.38%	7.03%	6.47%	5.64%	5.46%	7.33%	9.17%	7.24%	7.45%	8.44%
Marble Falls Middle School	1,200	909	907	943	929	1,021	1,152	1,254	1,333	1,405	1,535	1,681
MIDDLE SCHOOL TOTAL	1,200	909	907	943	929	1,021	1,152	1,254	1,333	1,405	1,535	1,681
Middle School Absolute Change		7	-2	36	-15	92	131	102	79	73	129	147
Middle School Percent Change		0.78%	-0.20%	3.99%	-1.56%	9.95%	12.85%	8.82%	6.29%	5.45%	9.20%	9.57%
Marble Falls High School	1,500	1,189	1,192	1,188	1,260	1,264	1,284	1,355	1,407	1,576	1,706	1,828
Falls Career High School	50	40	41	44	42	42	43	42	43	43	42	43
HIGH SCHOOL TOTAL	1,550	1,229	1,233	1,232	1,302	1,306	1,327	1,397	1,450	1,619	1,748	1,871
High School Absolute Change		-19	4	-1	69	5	20	70	52	169	130	122
High School Percent Change		-1.52%	0.33%	-0.05%	5.64%	0.35%	1.57%	5.31%	3.73%	11.66%	8.03%	6.98%
DISTRICT TOTALS	5,250	4,014	4,117	4,292	4,483	4,707	4,989	5,345	5,723	6,178	6,672	7,227
District Absolute Change		-85	103	174	192	224	282	356	378	455	494	555
District Percent Change		-2.07%	2.57%	4.24%	4.47%	5.00%	5.98%	7.14%	7.07%	7.95%	8.00%	8.32%

Yellow box = over capacity



Ten Year Forecast by Grade Level – New Boundary, Low Growth

(250 – 500 new homes per year)



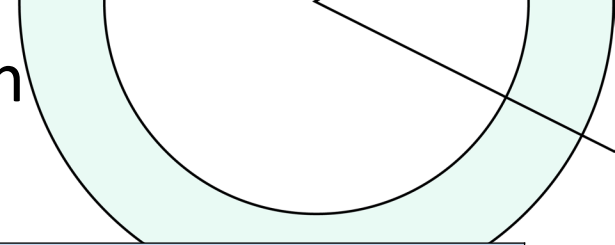
Year (Oct.)	EE	PK	K	1st	2nd	3rd	4th	5th	6th	7th	8th	9th	10th	11th	12th	Total	Total Growth	% Growth
2017/18	19	212	282	289	319	312	300	308	324	308	319	306	354	298	282	4,232		
2018/19	19	255	264	295	289	320	310	307	314	332	306	350	308	326	275	4,270	38	0.9%
2019/20	26	282	293	284	301	287	341	305	323	313	326	342	342	293	296	4,354	84	2.0%
2020/21	16	188	288	294	275	280	275	333	283	313	306	332	316	329	271	4,099	-255	-5.9%
2021/22	18	180	262	318	290	271	270	267	337	267	305	339	315	290	285	4,014	-85	-2.1%
2022/23	18	235	275	284	322	291	274	271	280	350	276	338	332	301	257	4,105	91	2.3%
2023/24	18	265	288	299	292	331	304	286	287	293	361	305	333	322	268	4,254	148	3.6%
2024/25	18	270	305	322	312	305	353	322	309	304	308	402	298	316	284	4,428	174	4.1%
2025/26	18	270	317	342	340	329	335	374	351	331	323	342	393	288	281	4,634	206	4.7%
2026/27	18	270	342	356	363	363	353	360	405	375	349	362	338	379	258	4,893	259	5.6%
2027/28	18	270	361	388	383	391	396	382	394	437	401	394	359	329	341	5,243	350	7.2%
2028/29	18	270	397	409	419	415	428	431	418	419	461	445	384	344	291	5,549	305	5.8%
2029/30	18	270	431	451	438	451	451	460	468	448	445	511	434	367	305	5,947	399	7.2%
2030/31	18	270	459	483	482	471	491	487	500	503	476	499	498	412	325	6,373	426	7.2%
2031/32	18	270	499	519	519	524	515	535	524	532	529	528	485	471	366	6,834	461	7.2%

Yellow box = largest grade per year
Green box = second largest grade per year



Ten Year Forecast by Campus – New Boundary, Low Growth

(250 – 500 new homes per year)



Campus	Capacity	Fall	ENROLLMENT PROJECTIONS									
		2021/22	2022/23	2023/24	2024/25	2025/26	2026/27	2027/28	2028/29	2029/30	2030/31	2031/32
Colt Elementary School	650	582	561	574	582	590	593	601	612	617	622	631
Highland Lakes Elementary School	750	511	538	552	567	586	596	613	632	648	655	665
Marble Falls Elementary School	650	580	567	583	611	628	624	630	641	649	657	669
Spicewood Elementary School	450	203	304	374	447	521	612	745	902	1,056	1,227	1,434
ELEMENTARY SCHOOL TOTAL	2,500	1,876	1,970	2,083	2,207	2,325	2,425	2,589	2,787	2,970	3,161	3,399
Elementary Absolute Change		-73	94	113	124	118	100	164	198	183	191	238
Elementary Percent Change		-3.75%	5.01%	5.74%	5.95%	5.35%	4.30%	6.76%	7.65%	6.57%	6.43%	7.53%
Marble Falls Middle School	1,200	909	907	941	921	1,005	1,130	1,232	1,297	1,361	1,479	1,585
MIDDLE SCHOOL TOTAL	1,200	909	907	941	921	1,005	1,130	1,232	1,297	1,361	1,479	1,585
Middle School Absolute Change		7	-2	34	-20	84	126	102	65	64	118	106
Middle School Percent Change		0.78%	-0.20%	3.75%	-2.15%	9.07%	12.52%	9.01%	5.27%	4.91%	8.68%	7.17%
Marble Falls High School	1,500	1,189	1,187	1,185	1,258	1,262	1,295	1,380	1,422	1,574	1,691	1,808
Falls Career High School	50	40	41	44	42	42	43	42	43	43	42	43
HIGH SCHOOL TOTAL	1,550	1,229	1,228	1,229	1,300	1,304	1,338	1,422	1,465	1,617	1,733	1,851
High School Absolute Change		-19	-1	1	70	5	33	84	42	152	117	117
High School Percent Change		-1.52%	-0.08%	0.11%	5.73%	0.35%	2.56%	6.32%	2.97%	10.38%	7.23%	6.75%
DISTRICT TOTALS	5,250	4,014	4,105	4,254	4,428	4,634	4,893	5,243	5,549	5,947	6,373	6,834
District Absolute Change		-85	91	148	174	206	259	350	305	399	426	461
District Percent Change		-2.07%	2.27%	3.61%	4.10%	4.65%	5.59%	7.16%	5.82%	7.19%	7.16%	7.23%

Yellow box = over capacity