

LMS Covid-19 Fall Athletic Procedures

Transportation

- All athletes will go through Covid-19 Screening before getting on the bus to travel. Athletes that do not pass the screening will not be allowed to travel. We also ask that schools go through the same procedure when coming to play at LMS. ****See LMS Covid-19 Roster Form***
- Masks will be worn by all parties on the bus.
- Windows and roof hatches will remain open on buses to allow better circulation if the weather permits.
- A seating chart for each bus will be established and 1 certified coach/teacher will ride on each bus. That seating chart will remain the same for the entire season. This will allow us to accurately contact trace athletes in the event of Covid-19 exposure. ****See LMS Athletics School Bus Seating Chart.***
- Buses should be sanitized before arriving to pick up athletes, after athletes go to play the game, and after dropping them back off on campus.
- If athletes do not feel comfortable riding the bus, they have the option to travel to the game with **their** parent/guardian. However, they must arrive at LMS at the same time as departure of the bus so they can go through the Covid-19 screening. The coach must have confirmation 3 days prior to competition of athlete's method of transportation to and from athletic venue. This allows our athletic staff to estimate how buses are needed for the game. **No Carpooling is allowed!** If a student needs to carpool, they must ride the bus, no exceptions.

LMS Football Stadium

- Outdoor venues are set at 25% capacity and ticket sales. This number is based on 6 ft. social distancing guidelines. **Spectators must wear a mask when entering and exiting the venue and when you cannot maintain a 6ft. distance from a person in another household.** Caution/ painters tape will be used on bleachers to represent seating that is off limits. Aisles that will be utilized will be identifies with an orange square. ****See off limits photo and orange square photo.***
- Opposing teams will be required to arrive to competition dressed and ready for play, as locker rooms will not be available.
- Restrooms will be open and available but 6 ft. distancing will be maintained along with signage to encourage hand washing.
- Spectators must wear a mask or other facial covering if within 6ft of a person from another household.
- Signage will be posted throughout the stadium that encourages proper social distancing and face covering guidelines.
- Only essential team staff members will be allowed on the sideline during competition.
- Everyone will enter through the double gates behind the LMS Gymnasium. Everyone will exit utilizing the same gate. Sanitation stations will be available at the ticket booth, home and away sides of the stadium.
- Opposing teams will be responsible for providing and developing their own hydration system.

LMS Gymnasium

- All indoor venues are set at 25% capacity and ticket sales. **Spectators must wear a mask at all times inside.** Caution and painters tape will be used on bleacher to represent seating that is off limits
- Opposing teams will be required to arrive to the competition dressed and ready for play, as locker rooms will not be available
- Restrooms will be open and available but 6 ft. distancing will be maintained along with signage to encourage hand washing.
- Masks are required for everyone inside the venue except the athletes that are competing during the competition
- Signage will be posted throughout the gymnasium that encourages proper social distancing and face covering guidelines.
- Only essential team staff members will be allowed on the sideline during competition.
- Everyone will enter through the double doors at the main entrance of the gymnasium adjacent to the parking lot. Everyone will exit utilizing the same double doors. Sanitation stations will be available at the main entrance of the gymnasium. Opposing teams will be responsible for providing and developing their own hydration system.

Ticketing

- All indoor and outdoor venues are set at 25% capacity and ticket sales. Tickets will be available to purchase at the game and 6ft distance markers will be in place to space out the ticketing process. Patrons will be asked to arrive 30-45 minutes prior to game to expedite for extended time and temperature screening.

Concessions

- All concession workers will go through a covid-19 screening before being allowed into the concession stand.
- All concession workers will wear masks and gloves as well as maintain 6ft distancing within the concession space.
- 6 ft. distancing markers will be put in place to space out the concession purchasers, and there will be 6 ft. between cashier windows.
- Concession products will be limited to grab and go items which are prepackaged such as chips, can sodas, Gatorade, candy, cookies, etc. Sandwiches and or hydration products will be provided by vendors such as Chick-fil-a and or Zaxby's, Sweet Temptations and or Kona Ice. No other open faced or hand prepared items prepared by concession workers will be sold.

LMS ATHLETICS SCHOOL BUS SEATING CHART

DRIVER'S SEAT (First seat begins two seats behind driver)

Seat # 1	EMPTY
	EMPTY

Seat # 3	EMPTY
	EMPTY

Seat # 5	1.

Seat # 7	1.

Seat # 9	1.

Seat # 11	1.

Seat # 13	1.

Seat # 15	1.

Seat # 17	1.

Seat # 19	1.

Seat # 21	1.

Seat # 23	1.

(Bus loads back to front. Last person on the bus sits in the front)

Seat # 2	EMPTY
	EMPTY

Seat # 4	1.

Seat # 6	1.

Seat # 8	1.

Seat # 10	1.

Seat # 12	1.

Seat # 14	1.

Seat # 16	1.

Seat # 18	1.

Seat # 20	1.

Seat # 22	1.

Seat # 24	1.

COACH: _____ **OPPONENT:** _____ **DATE:** _____

LMS Facility Seating

LMS Football Stadium

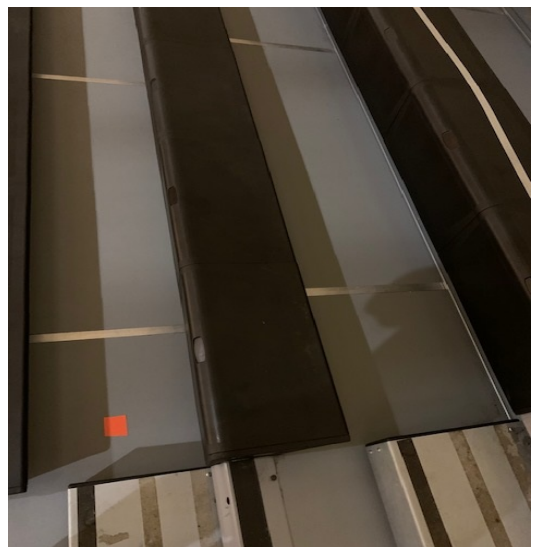
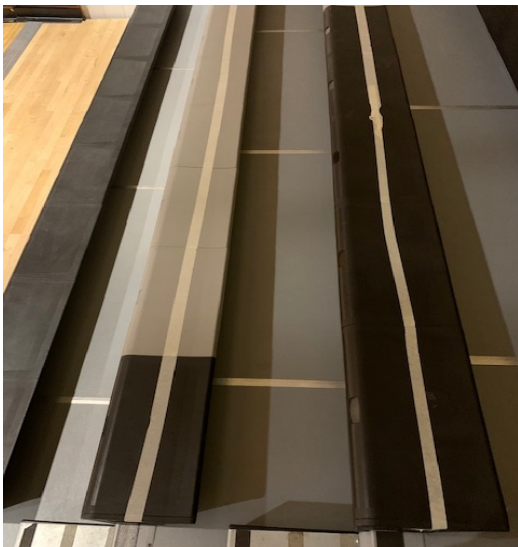


Patrons will not be allowed to sit in areas with caution or painters tape. Patron seating will be after every two (2) sets of bleachers.



Patrons will have access to any aisle with an orange piece of tape. Patrons should socially distance 6 ft. a part on bleachers. Families of four (4) are allowed to sit together w/out social distancing.

LMS Gymnasium



Facility Signage

The following signs will be displayed throughout all athletic facilities during their perspective seasons.

