

CDC Writing - Disha Patel - Mrs. Joshi

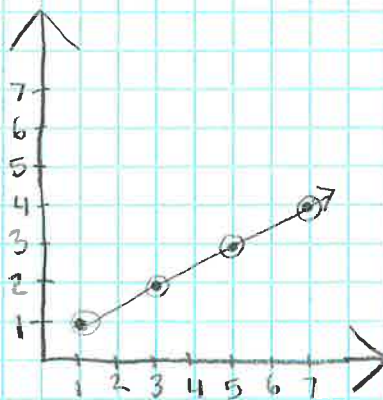
Prompt: Describe and correct the error in graphing the line from the input-output table

Claim: The error made in the graph is that it has switched the x and y coordinates

Data:

Independent	Dependent
Input	Output
1	1
2	3
3	5
4	7

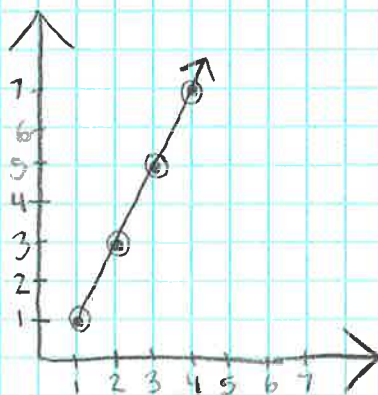
What it shows:



Wrong Coordinates:

1,1
3,2
5,3
7,4

Correct Way:



Right Coordinates:





1,1
2,3
3,5
4,7

Commentary:

To make a graph and plot coordinates, you need to

1. Make an input-output table. Ex.

2. Label the input with 1, 2, 3, 4
Label the output with 1, 3, 5, 7 Ex.

1	1
2	3
3	5
4	7
3. Pair up the numbers with input first, comma, then output
Ex. (1,1), (2,3), (3,5), (4,7)
4. Make your graph and label it with numbers. Ex. 
5. Label your graph with the x axis on the horizon line and y axis on the vertical line. Ex. 
6. To plot coordinates, look at the first number of the pair and move that many spaces on the x axis. Ex. (1, 1)
7. Then look at the second number, and move that many spaces up from where you left off on the x axis. Ex. (1, 1)
8. Then do all 4 pairs on the graph
9. Make a line between all the points and at the tip make an arrow head. Ex. 
10. Circle all the points. Ex. 

Now you know how to plot on a graph