

C.A.R.E. Counseling and Resource Enhancement

January 8, 2024

Lowell C.A.R.E. is...

1 Counselor, 7 Counseling Interns

4 School Psychologists

10 School Psychologist Interns

Program Specialist

Director of Special Education

Intern Program Director

The CARE team works hard to institute positive and effective systems to build student resiliency and independence leading to student success.



Individual Counseling

- **Parent Permission**
- **Teacher/Admin/Parent referral**
- **General Education Students and Special Education Students**
- **CoVitality Screener**
- **McKinney Vento, EL, Foster Youth**

Individual Counseling

- **Teacher/Admin/Parent referral**
 - **Academic progress, class scheduling, credit checks, tutoring, progress monitoring**
 - **Students in need**
- ★ **As of December 2023, there have been over 1,096 student contacts logged since August.**

Topics

Personal/Social

- **Making Friends, Personal Space, Social Skills, Conflict Resolution, Coping Skills**

Academic

- **Test Taking Strategies, Listening Skills, Academic Support and Goal Setting**

Group Counseling

- **Parent Permission**
- **Teacher/Admin/Parent referral**
- **5-8 Students/Group**
- **6-8 weeks**
- **Curriculum followed**
- **Over 22 groups have been formed, are in progress, or have concluded**

Topics

- **Study Skills**
- **Social Skills**
- **Kinder**
- **Playgroup**
- **Self-Esteem**
- **Time Management**
- **Empowerment**
- **Loss and Grief**
- **Emotional Regulation**

Lunch Bunch



- **Lunch Bunch Activity Groups are held on each campus multiple times per week depending on the school needs. (25-40 students attend each group)**
- **Data has been collected and reflects a decrease of discipline issues during lunch recess at several schools.**
- **Activities include: various games, coloring, discussions, sports activities, music, dancing.**

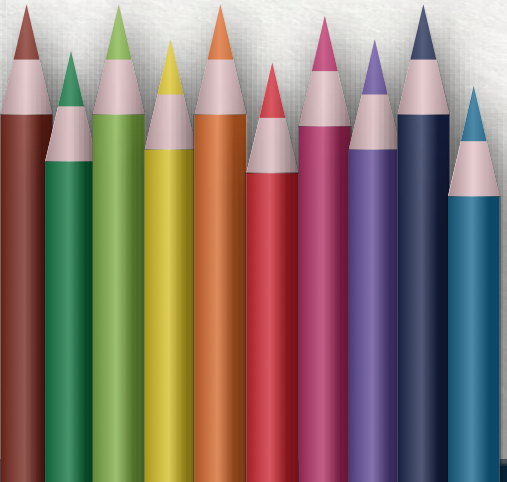
Classroom Guidance Lessons

- **College/Career Awareness**
- **Interest Inventories**
- **Exploring World of Work**
- **Healthy Living and Choices**
- **Conflict Resolution**
- **Kindness**

Did you know?

Lessons and surveys in classrooms....

- **CoVitality Screener - twice per year for all 4th - 8th grade students**
- **Needs Assessment at Rancho in August**
- **Addiction presentation for 5th and above**
- **Pathful - Career Program for all Kindergarten through 8th grade students**
- **Guided lessons on motivation/goal setting**
- **Preparation for transition from 6th grade to Rancho Starbuck and 8th grade to High School**



Special Education Support

- **Testing for special education eligibility and triennial testing**
- **Supplying observational data**
- **Report writing**
- **Active participation in SST, 504 and IEP meetings**
- **Social Skills Building**
- **Implementation of behavior modification with students in structured and unstructured environments.**
- **Data collection**

Building Relationships!



Community

- **School Culture**
- **Schoolwide Campaigns**
- **PTA Initiatives**
- **Lunch Bunch**

Collaboration

- **Staff - Admin, Teachers, Support Staff**
- **Family - Parent Education Programs, Parent Meetings, Consultation, Referrals**
- **Community - District Personnel, Conferences, Professional Organizations, Other professionals**



Lowell C.A.R.E.
**meets individual
student needs &
empowers them
to help ensure
their success!**



2023-2024
C.A.R.E.





C.A.R.E.



**Making positive
connections
every day!**





Free themes and templates for
Google Slides or PowerPoint

NOT to be sold as is or modified!

Read [FAQ](#) on slidesmania.com

Do not remove the slidesmania.com text on the sides.

Sharing is caring!

