



LOWELL JOINT SCHOOL DISTRICT ANNUAL ACHIEVEMENT UPDATE 2017-2018



DISTRICT LEVEL DATA

How did we do in comparison to the State, LA County, and Orange County?

	ELA Overall	Math Overall
State	49%	38%
LA County	47%	36%
Orange County	57%	48%
Lowell Joint	61%	54%

Combined percentage of students who fell within the “Met” or “Exceeded Standards” range.

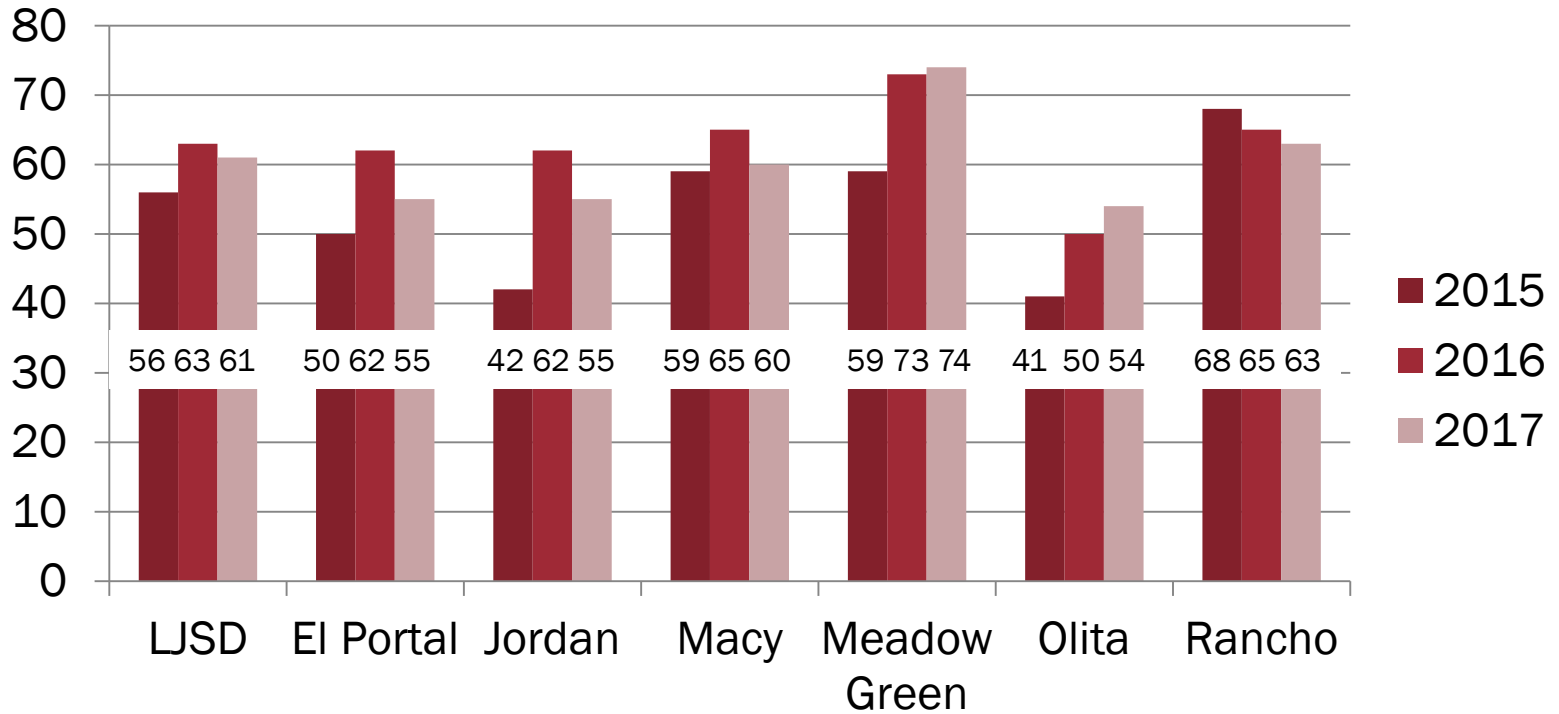
SUBGROUP DATA- ENGLISH LANGUAGE ARTS

	All Students	English Learners	Economically Disadvantaged	Students with Disabilities
State	49%	12%	36%	14%
LA County	47%	10%	38%	13%
Orange County	57%	15%	39%	19%
Lowell Joint	61%	9%	47%	19%

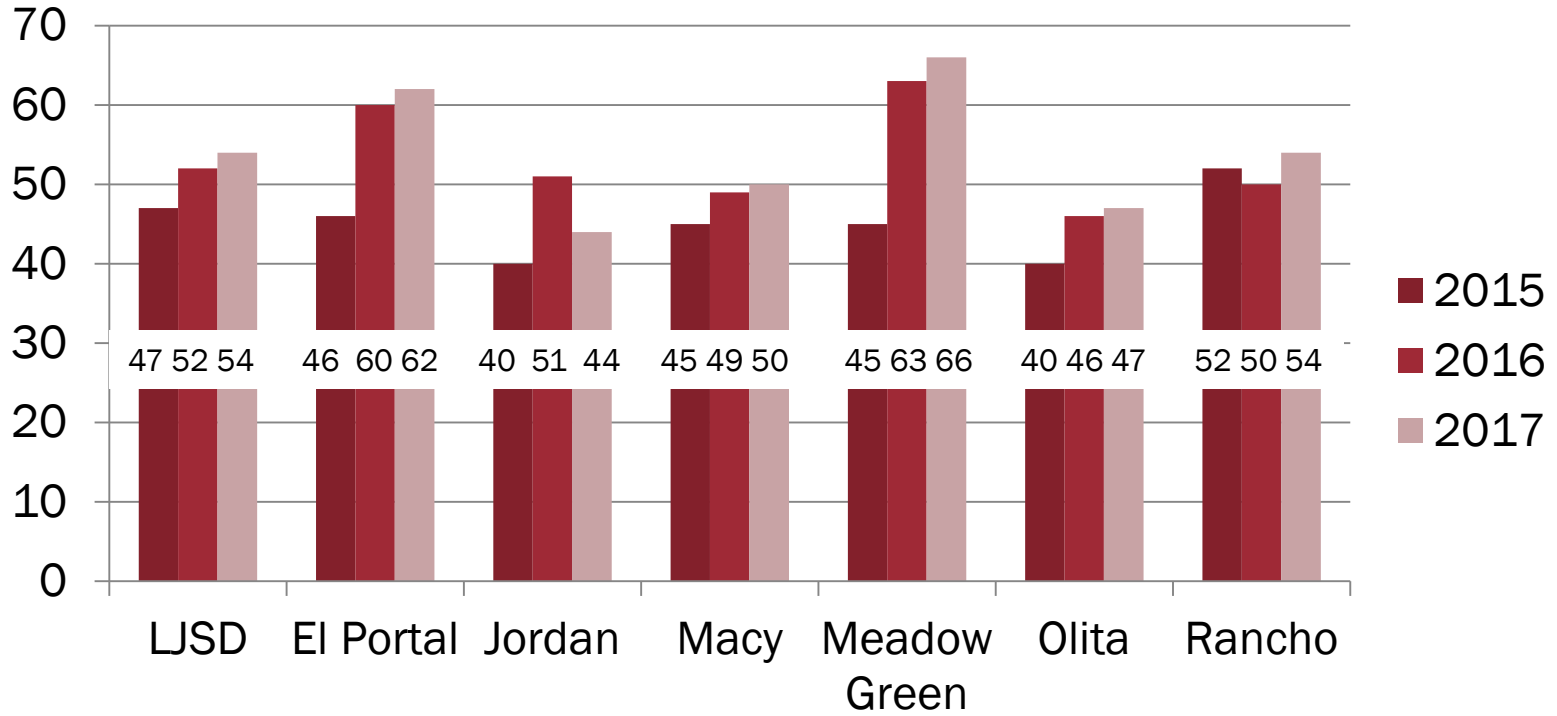
SUBGROUP DATA- MATHEMATICS

	All Students	English Learners	Economically Disadvantaged	Students with Disabilities
State	38%	12%	25%	11%
LA County	36%	12%	27%	10%
Orange County	48%	16%	29%	17%
Lowell Joint	54%	15%	42%	17.21%

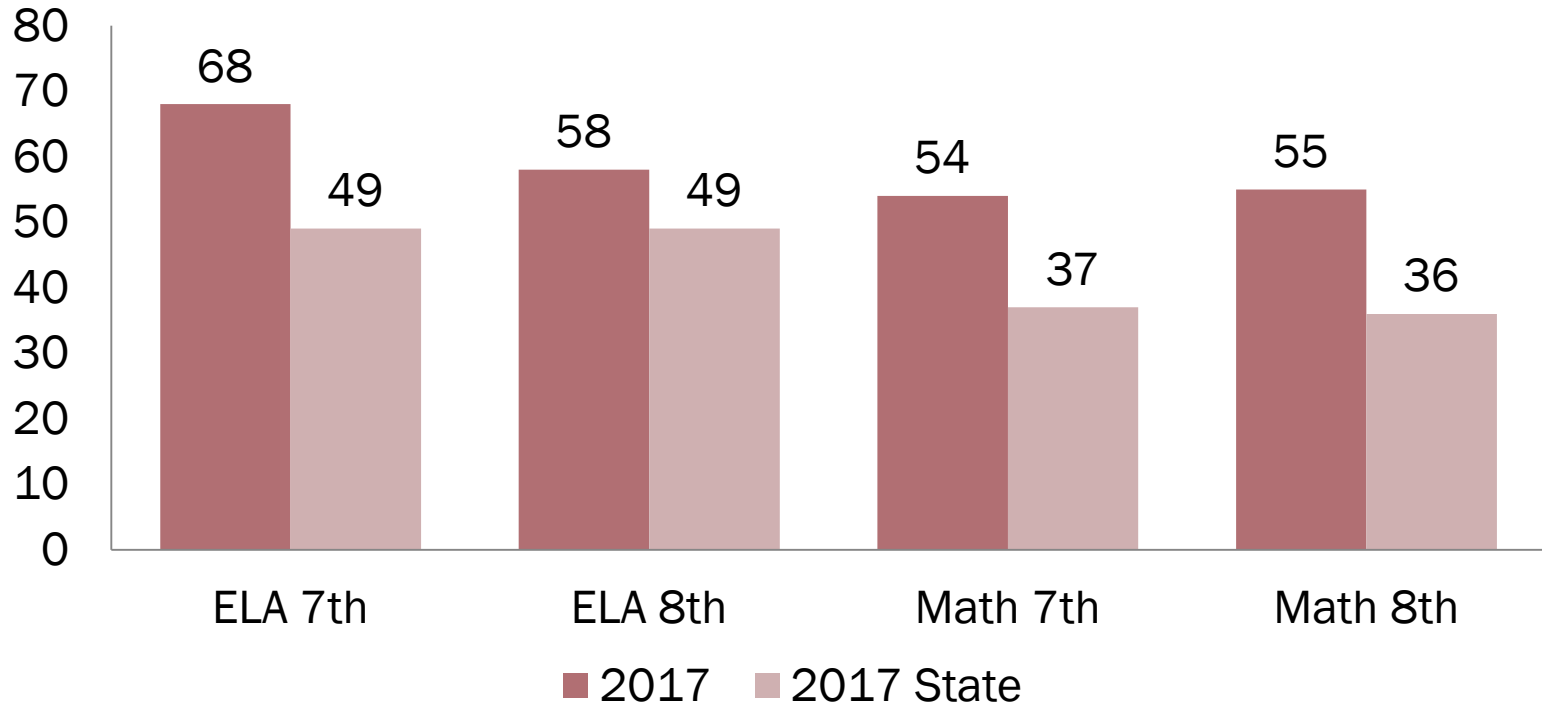
SCHOOL LEVEL DATA-ENGLISH LANGUAGE ARTS



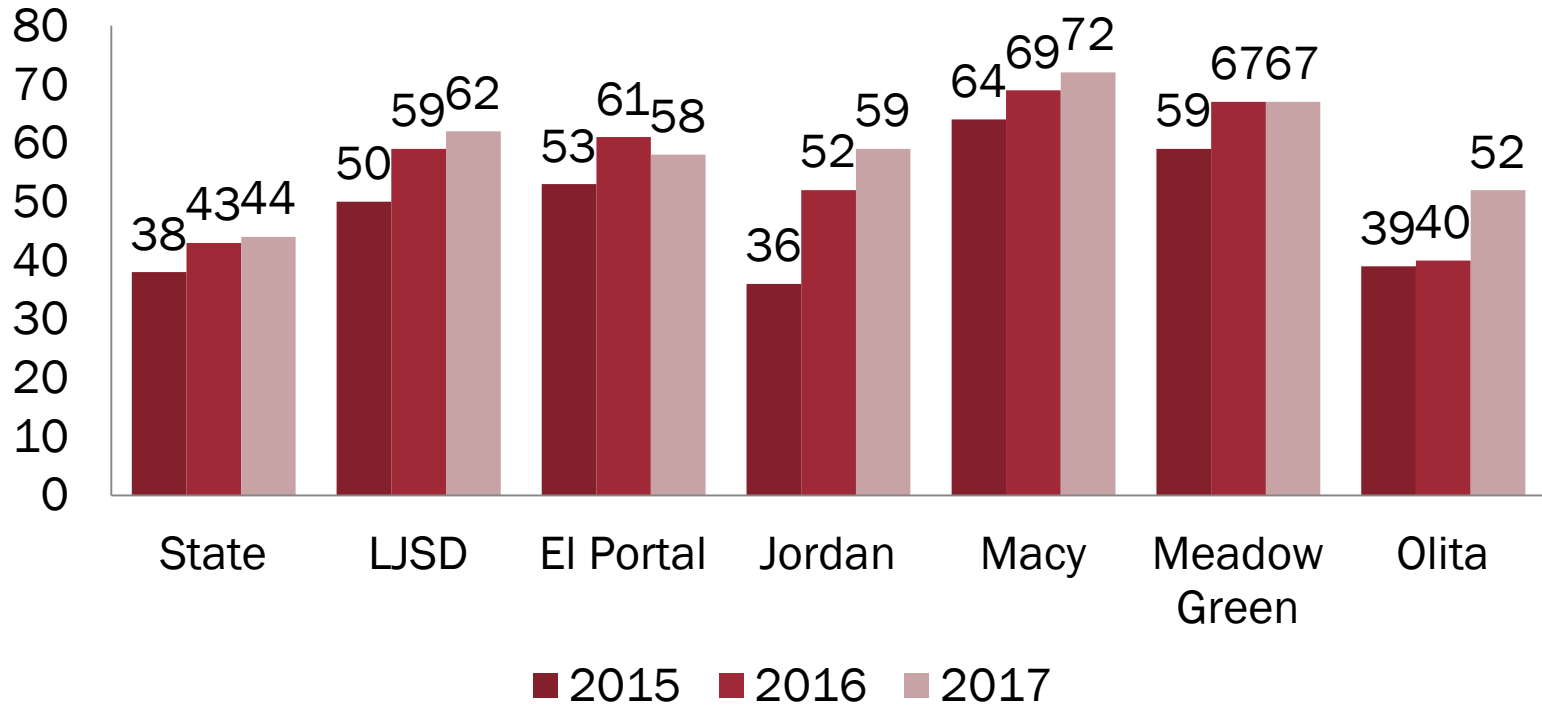
SCHOOL LEVEL DATA-MATHEMATICS



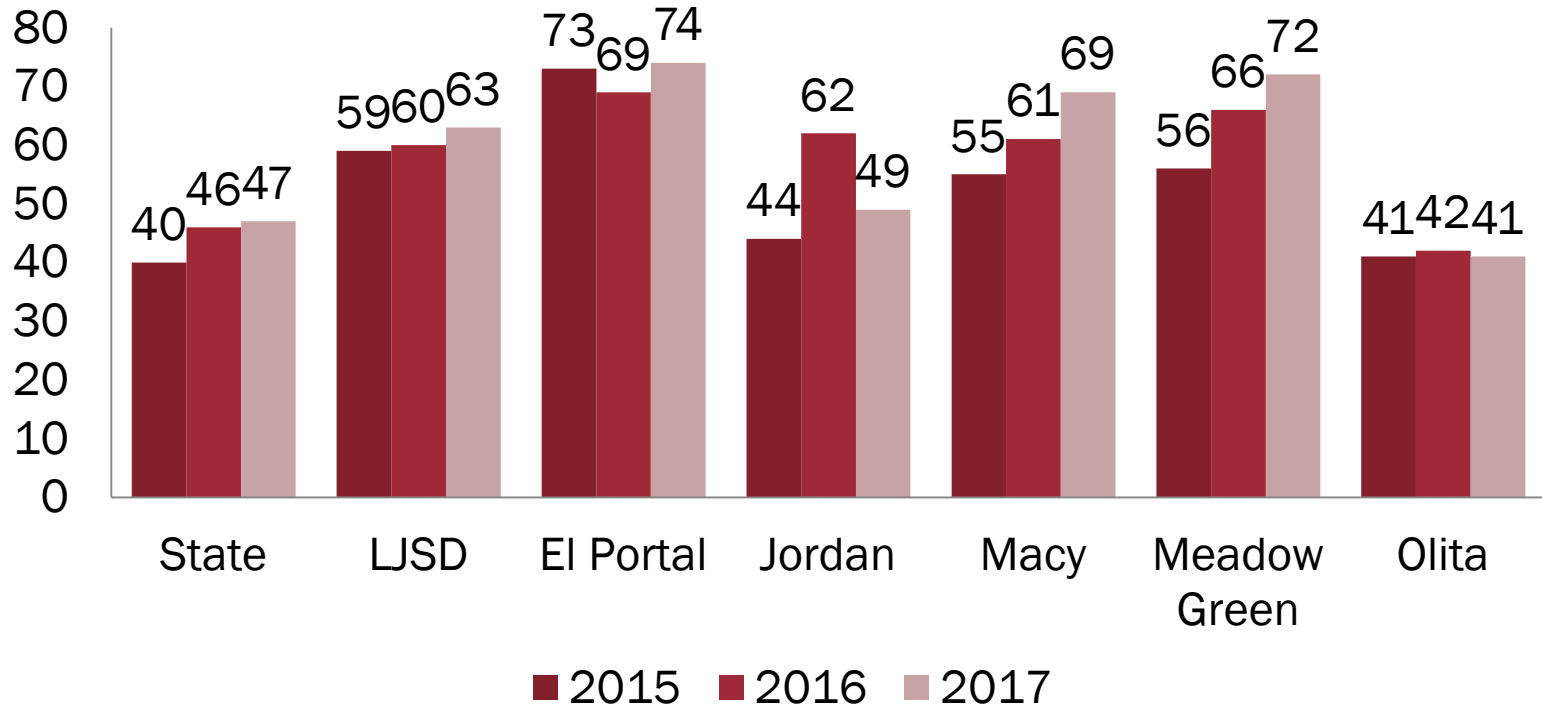
GRADE LEVEL DATA – RANCHO STARBUCK



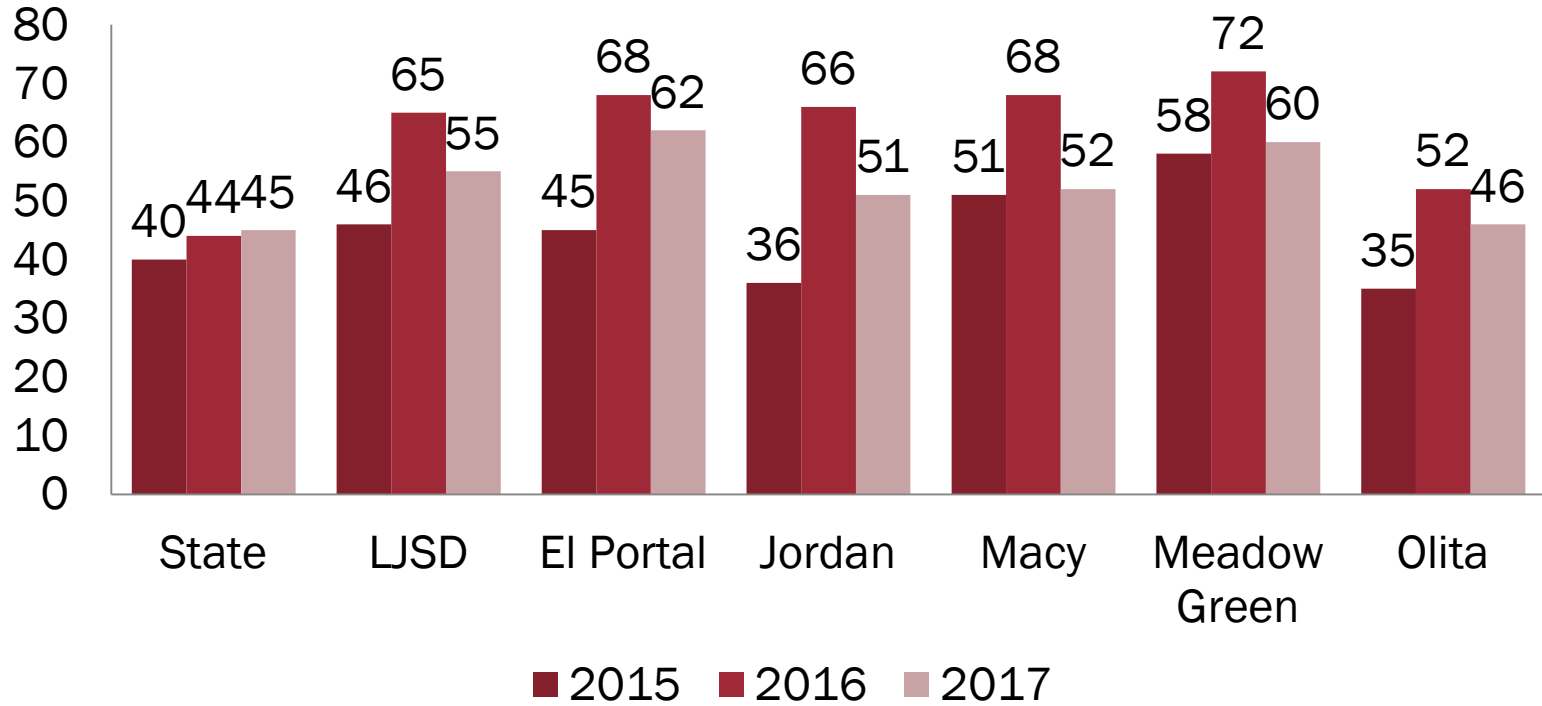
GRADE LEVEL DATA-THIRD ELA



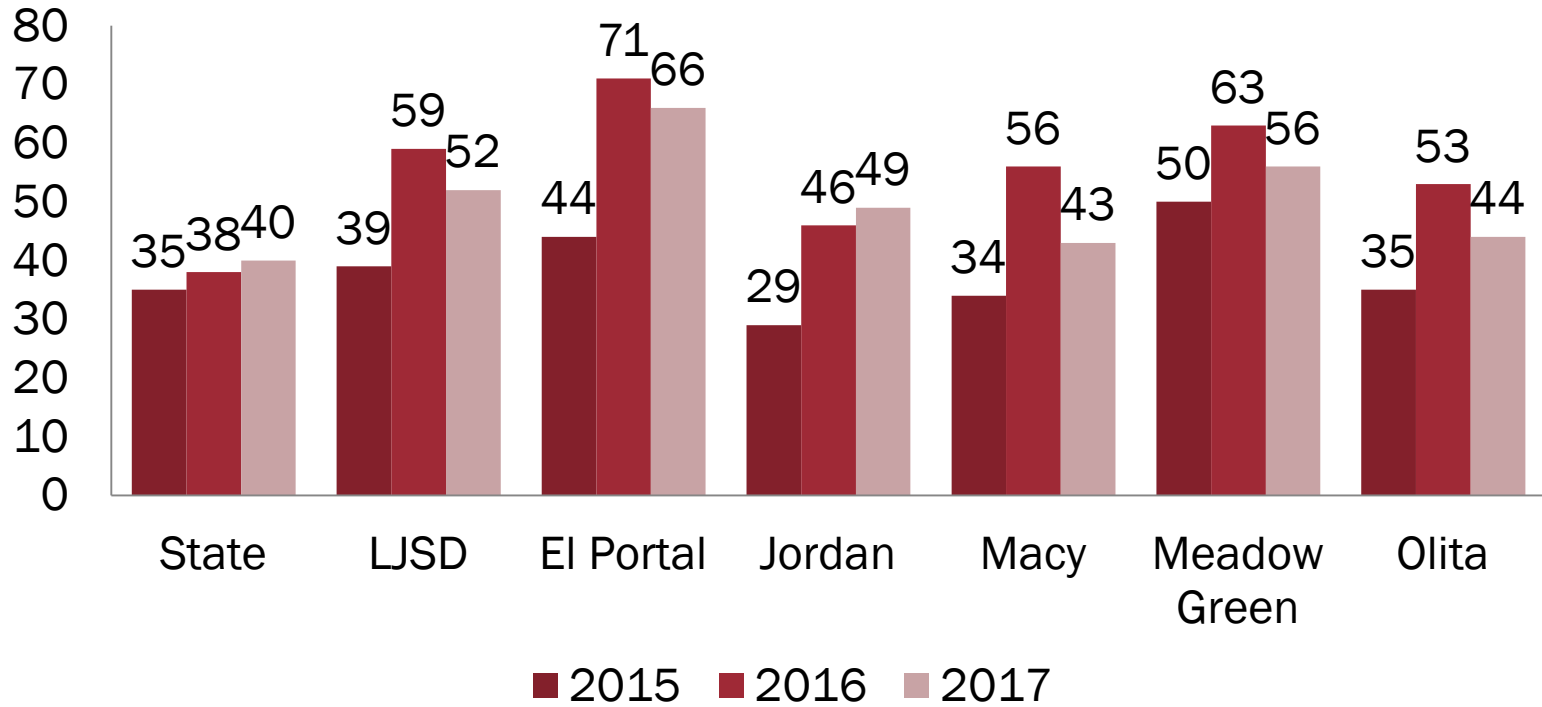
GRADE LEVEL DATA-THIRD MATH



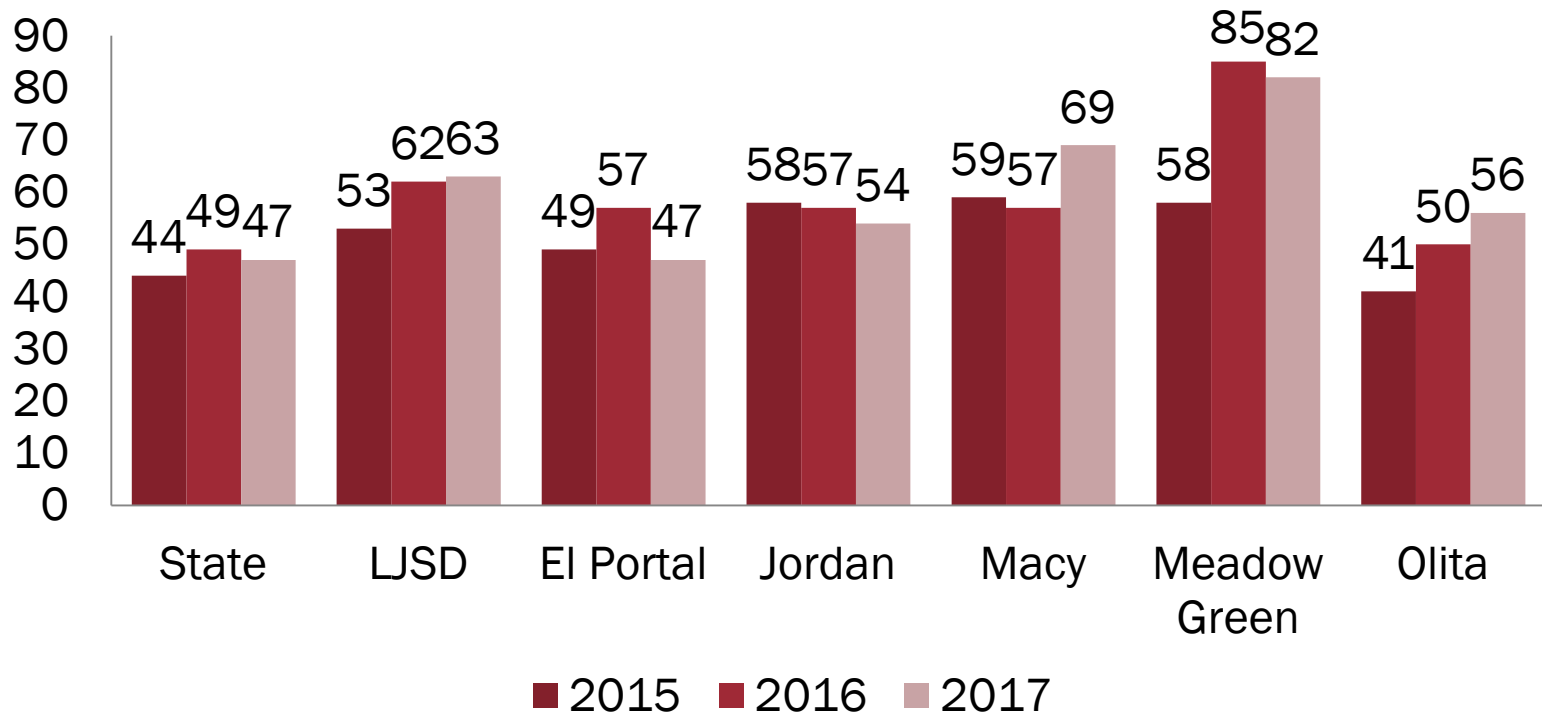
GRADE LEVEL DATA-FOURTH ELA



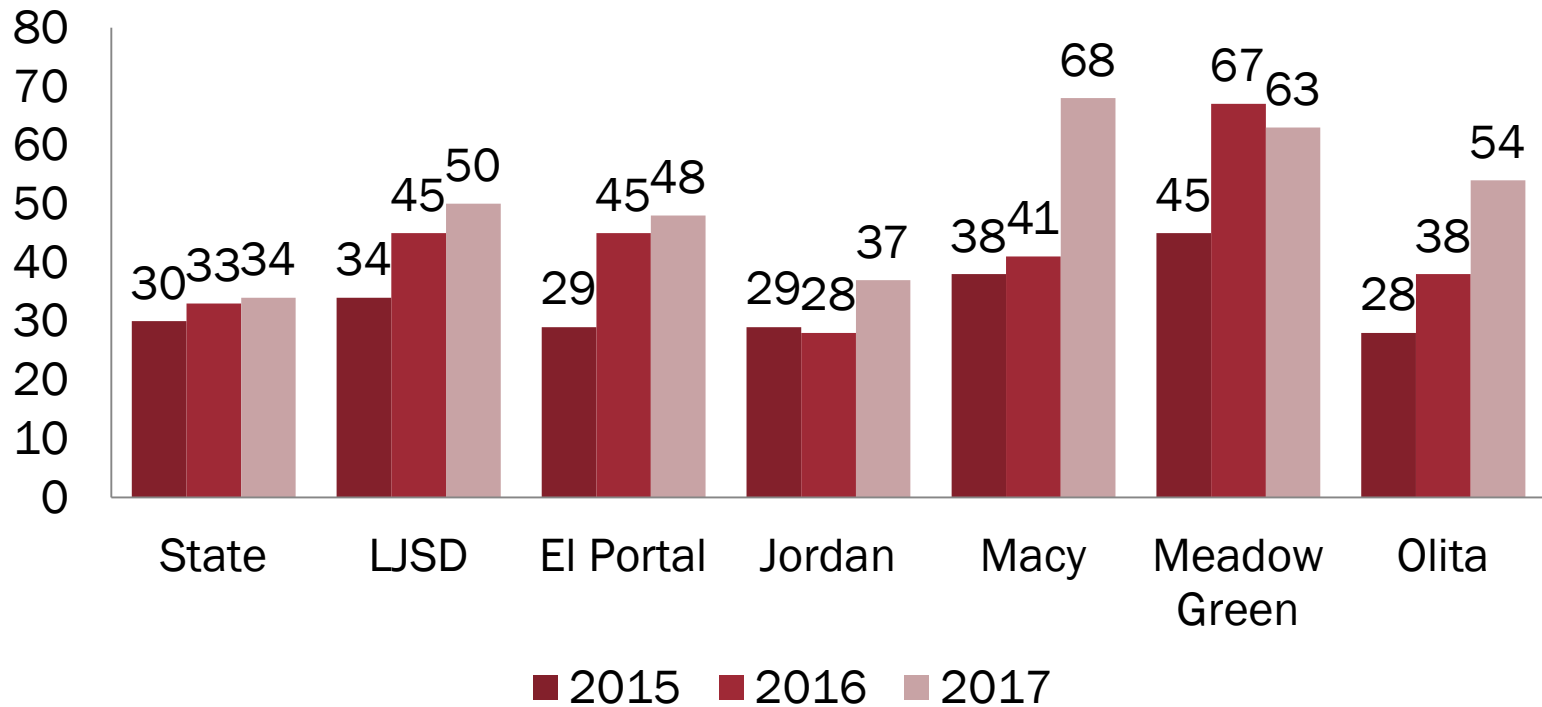
GRADE LEVEL DATA-FOURTH MATH



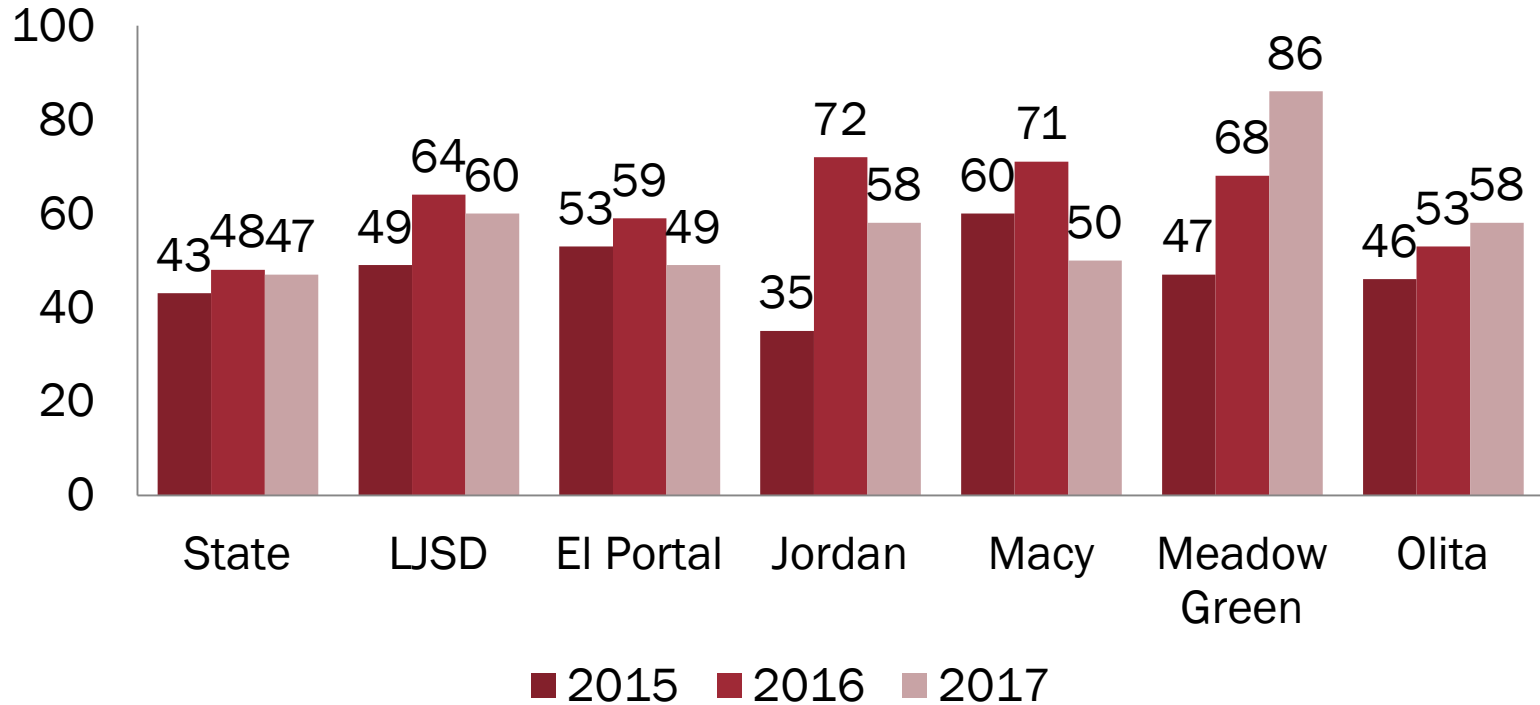
GRADE LEVEL DATA-FIFTH ELA



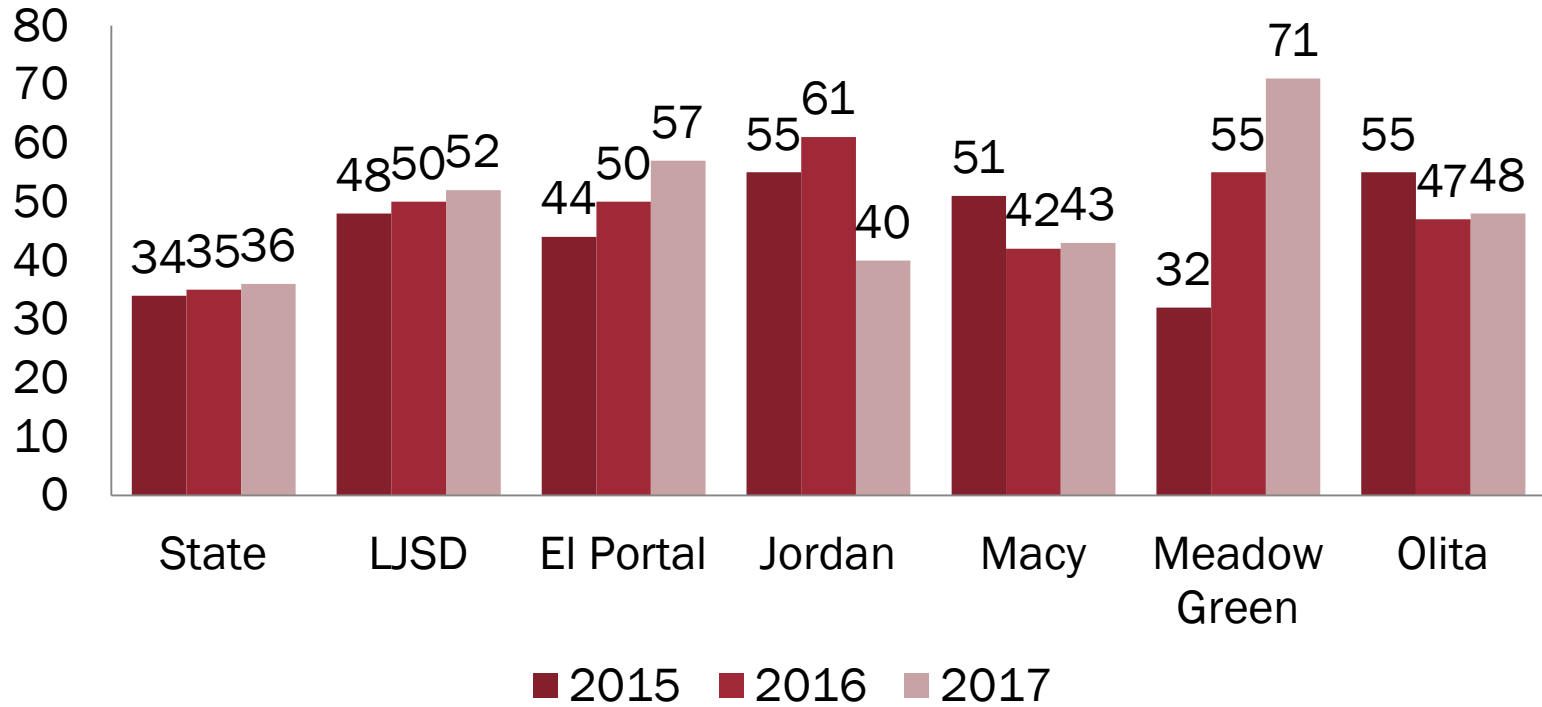
GRADE LEVEL DATA-FIFTH MATH



GRADE LEVEL DATA-SIXTH ELA

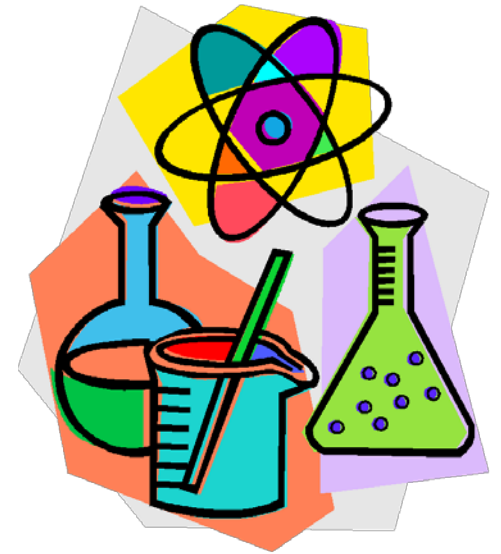


GRADE LEVEL DATA-SIXTH MATH



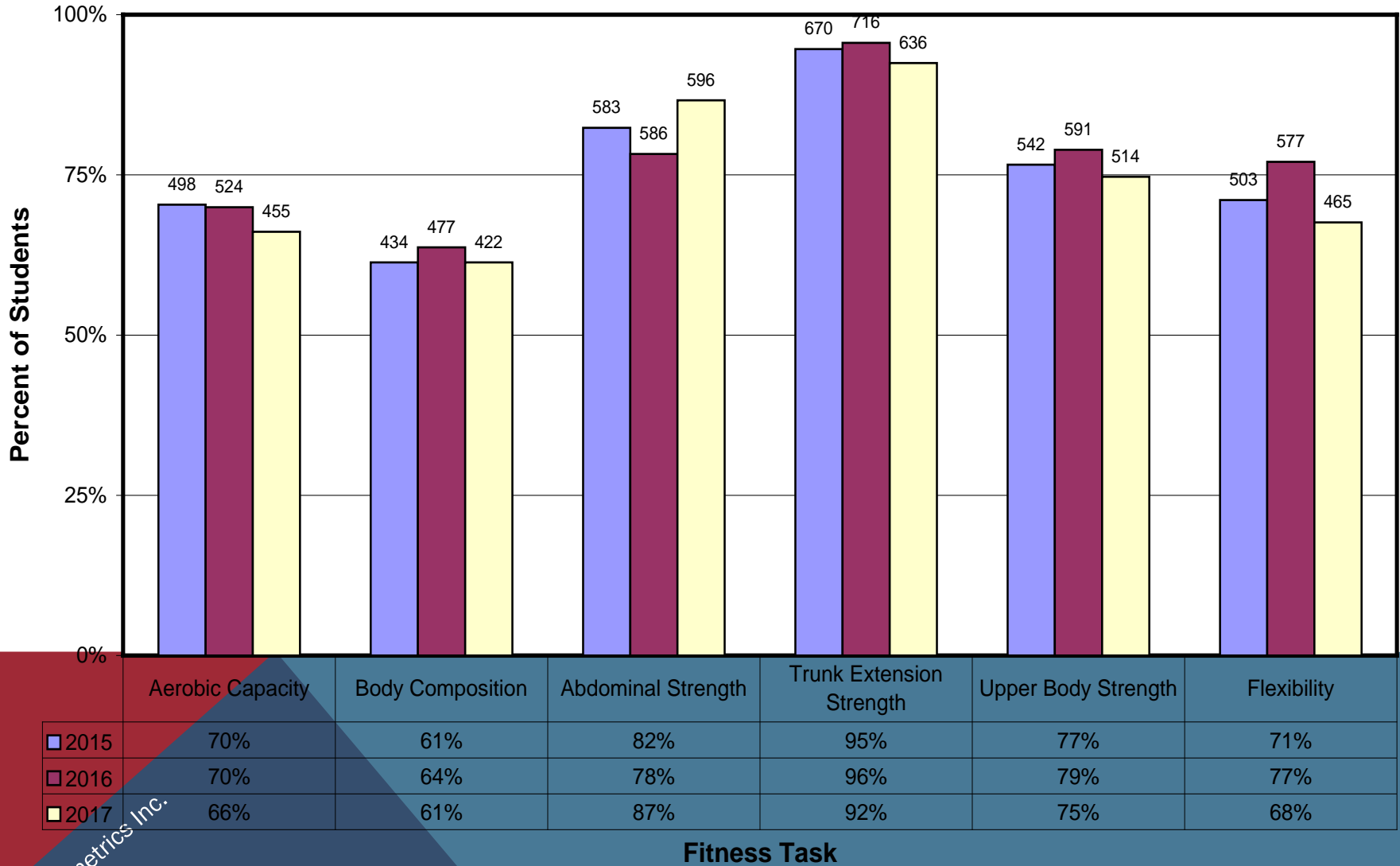
2017 SCIENCE

**There are no Science results
available currently.**



Lowell Joint Percent of Students Passing Fitness Tasks-Overall 2015-2017

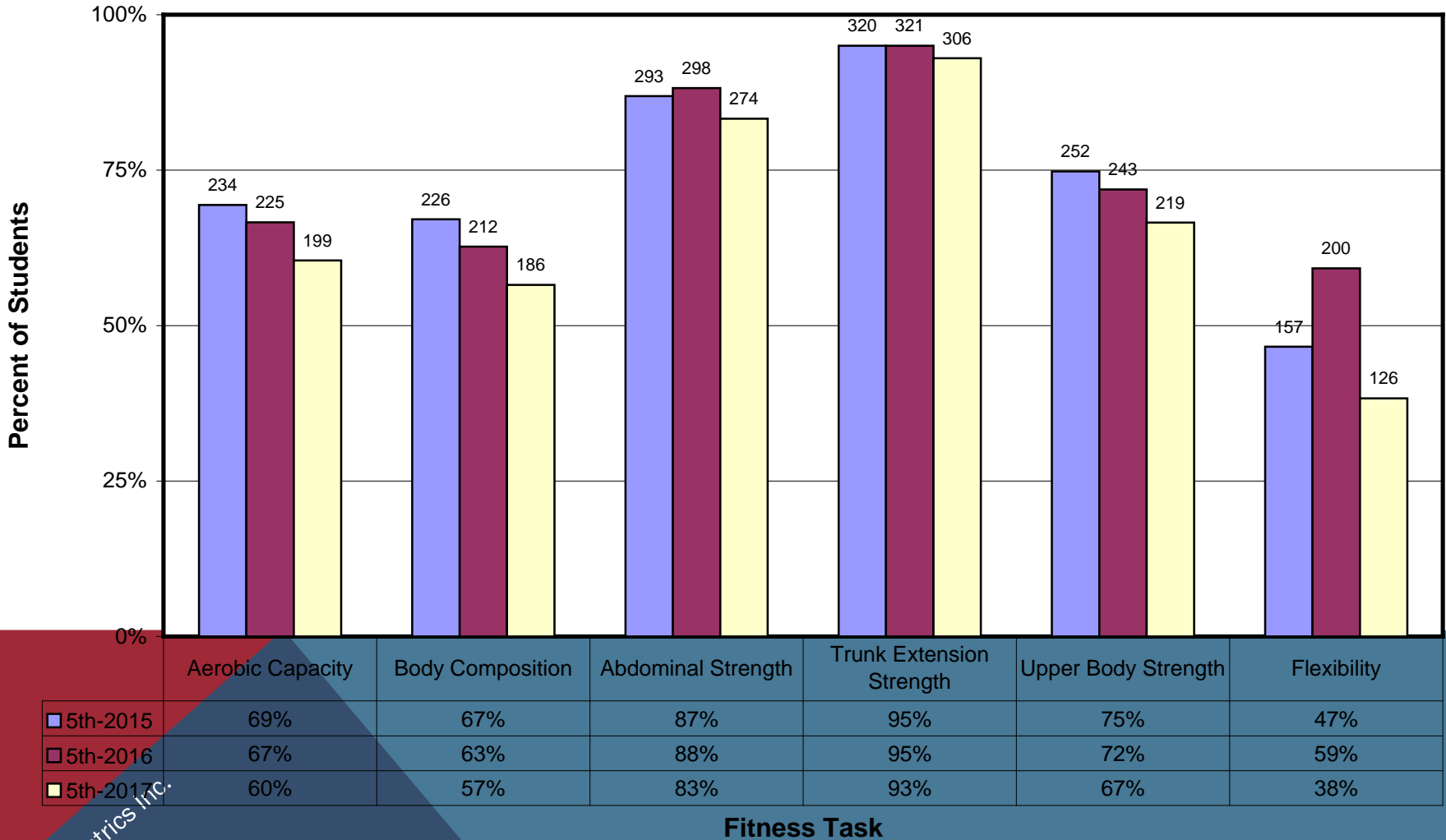
Bar Number = Number of students



Evalumetrics Inc.

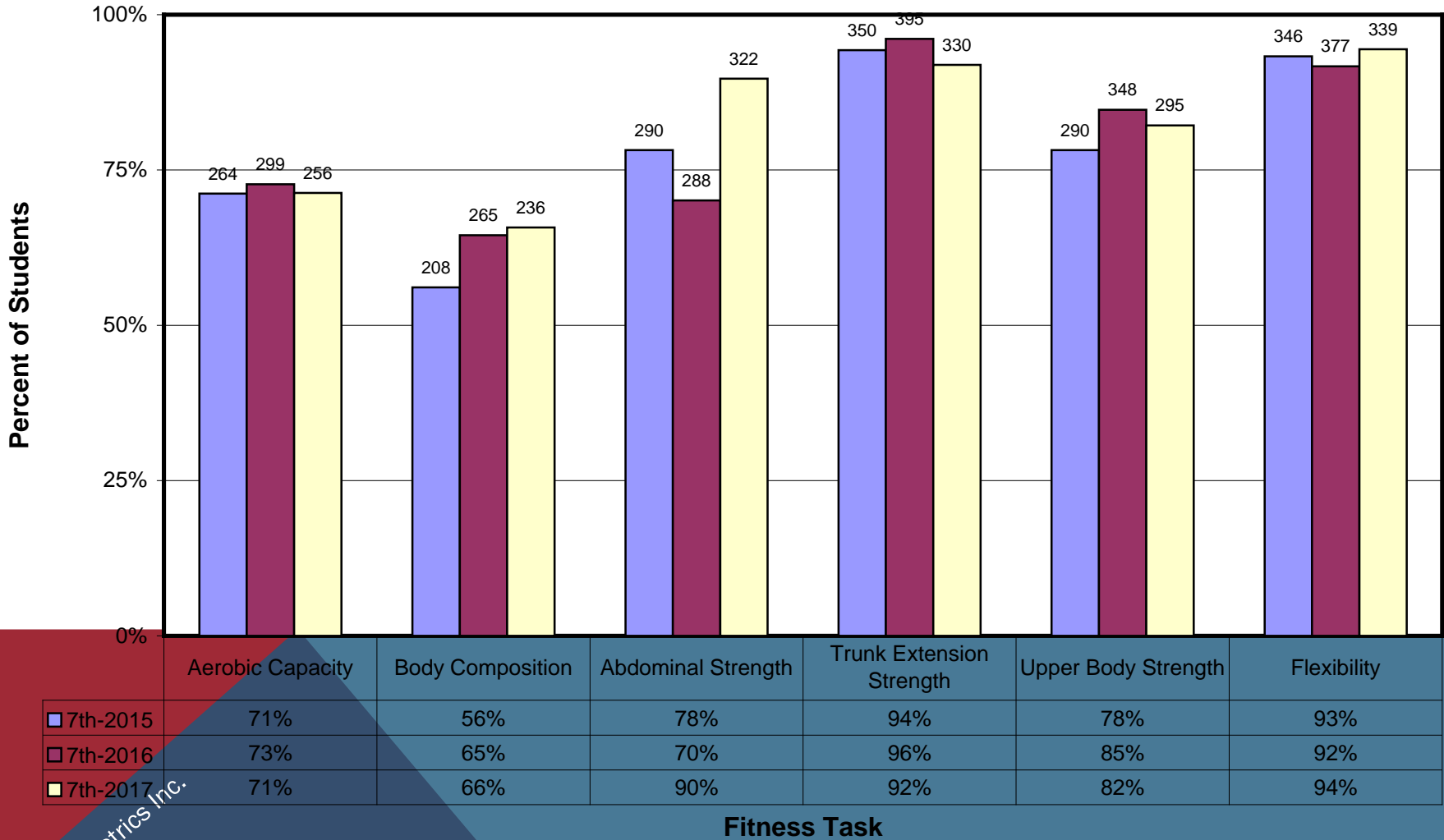
Lowell Joint Percent of Students Passing Fitness Tasks-5th Grade 2015-2017

Bar Number = Number of students



Lowell Joint Percent of Students Passing Fitness Tasks-7th Grade 2015-2017

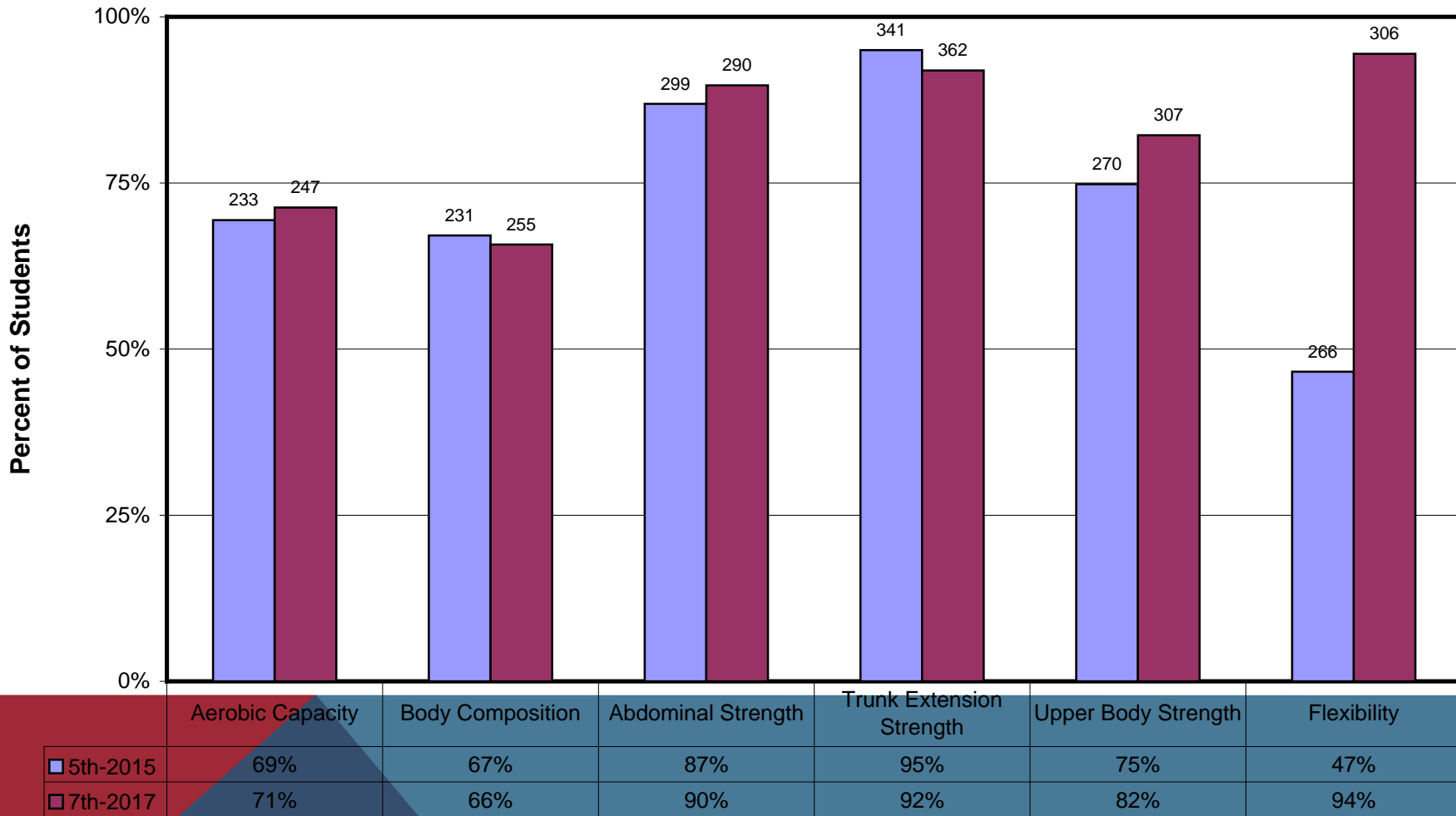
Bar Number = Number of students



Evalumetrics Inc.

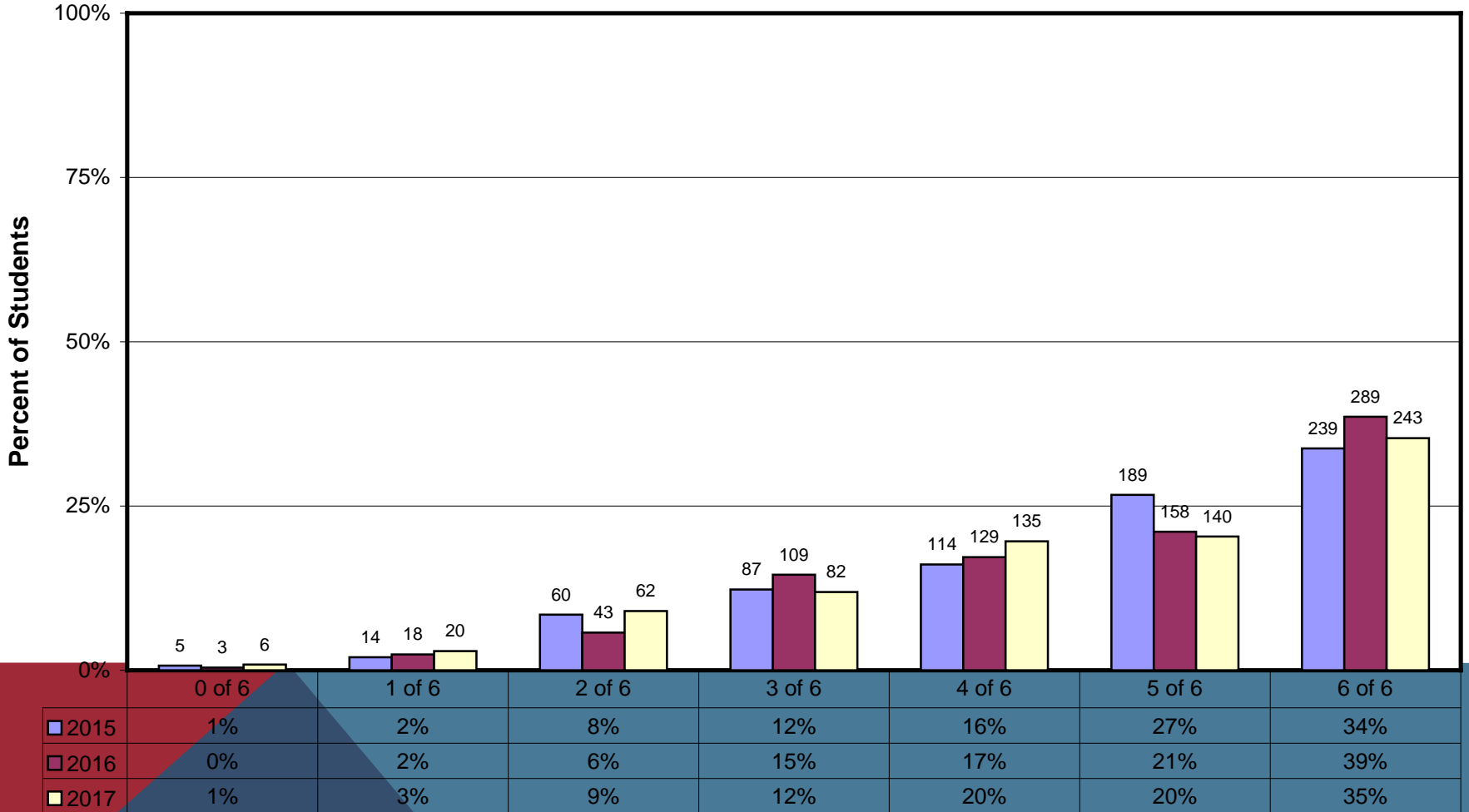
Lowell Joint Percent of Students Passing Fitness Tasks-5th to 7th grade 2015-2017

Bar Number = Number of students



Lowell Joint Percent of Students Meeting Fitness Standards-Overall 2015-2017

Bar Number = Number of students

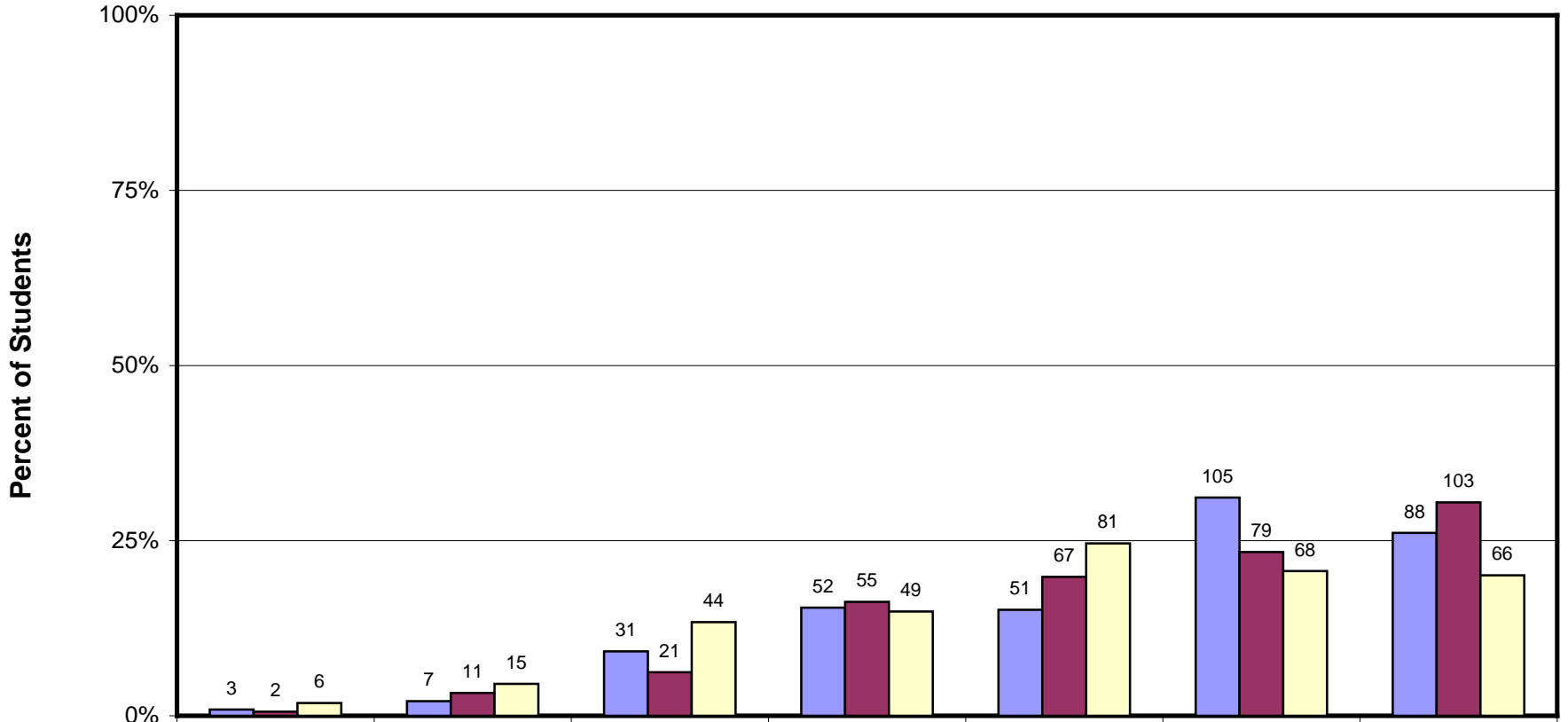


Number of Fitness Standards Achieved

Lowell Joint

Percent of Students Meeting Fitness Standards-5th Grade 2015-2017

Bar Number = Number of students



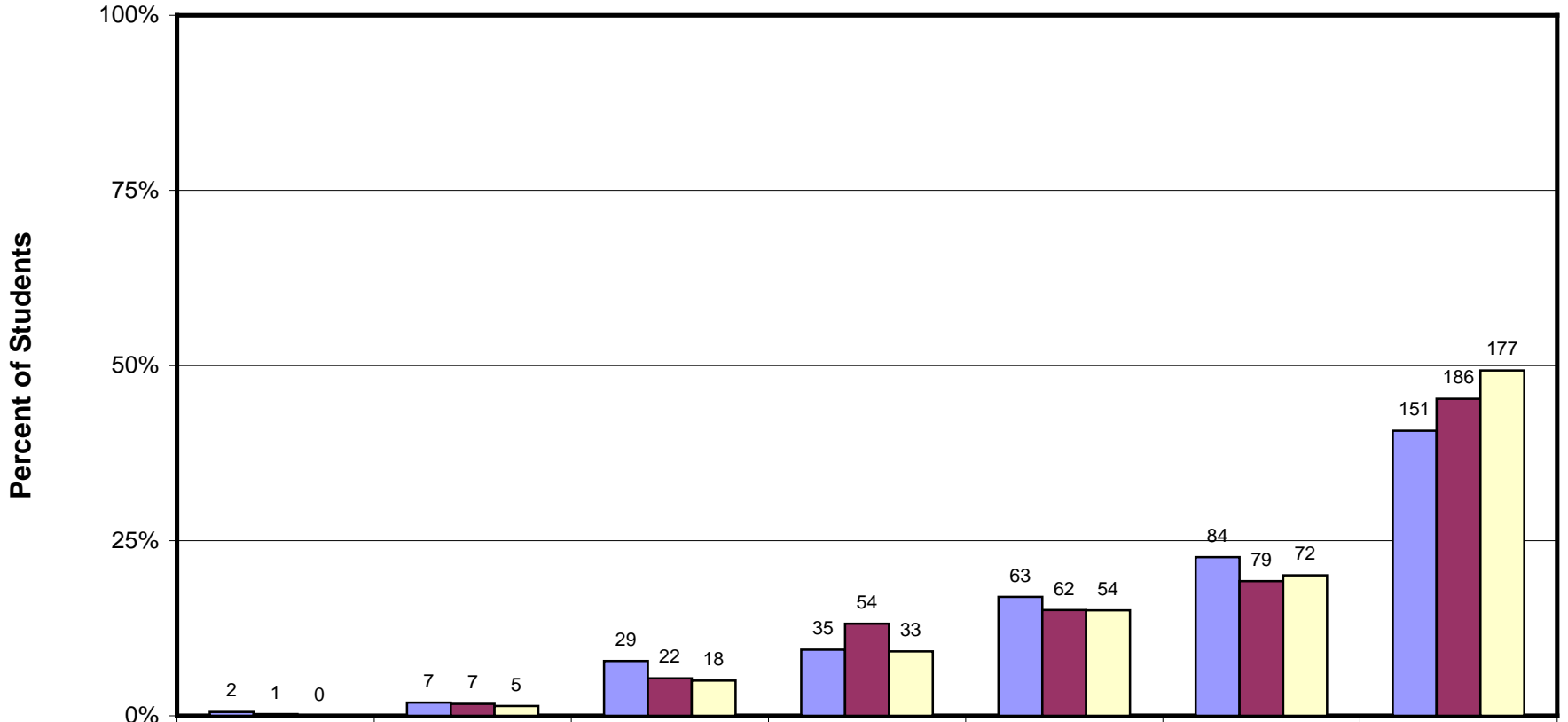
	0 of 6	1 of 6	2 of 6	3 of 6	4 of 6	5 of 6	6 of 6
5th-2015	1%	2%	9%	15%	15%	31%	26%
5th-2016	1%	3%	6%	16%	20%	23%	30%
5th-2017	2%	5%	13%	15%	25%	21%	20%

Number of Fitness Standards Achieved

Evalumetrics Inc.

Lowell Joint Percent of Students Meeting Fitness Standards-7th Grade 2015-2017

Bar Number = Number of students



	0 of 6	1 of 6	2 of 6	3 of 6	4 of 6	5 of 6	6 of 6
7th-2015	1%	2%	8%	9%	17%	23%	41%
7th-2016	0%	2%	5%	13%	15%	19%	45%
7th-2017	0%	1%	5%	9%	15%	20%	49%

Number of Fitness Standards Achieved

Evalumetrics Inc.

Any questions?

