

**Lowell Joint
School District**

2012 BASE API Report

June 3, 2013

Academic Performance Index (API)

- State accountability reporting system
- Looks at growth in district/school's performance
- CST, CMA, and CAPA tests used in API calculation

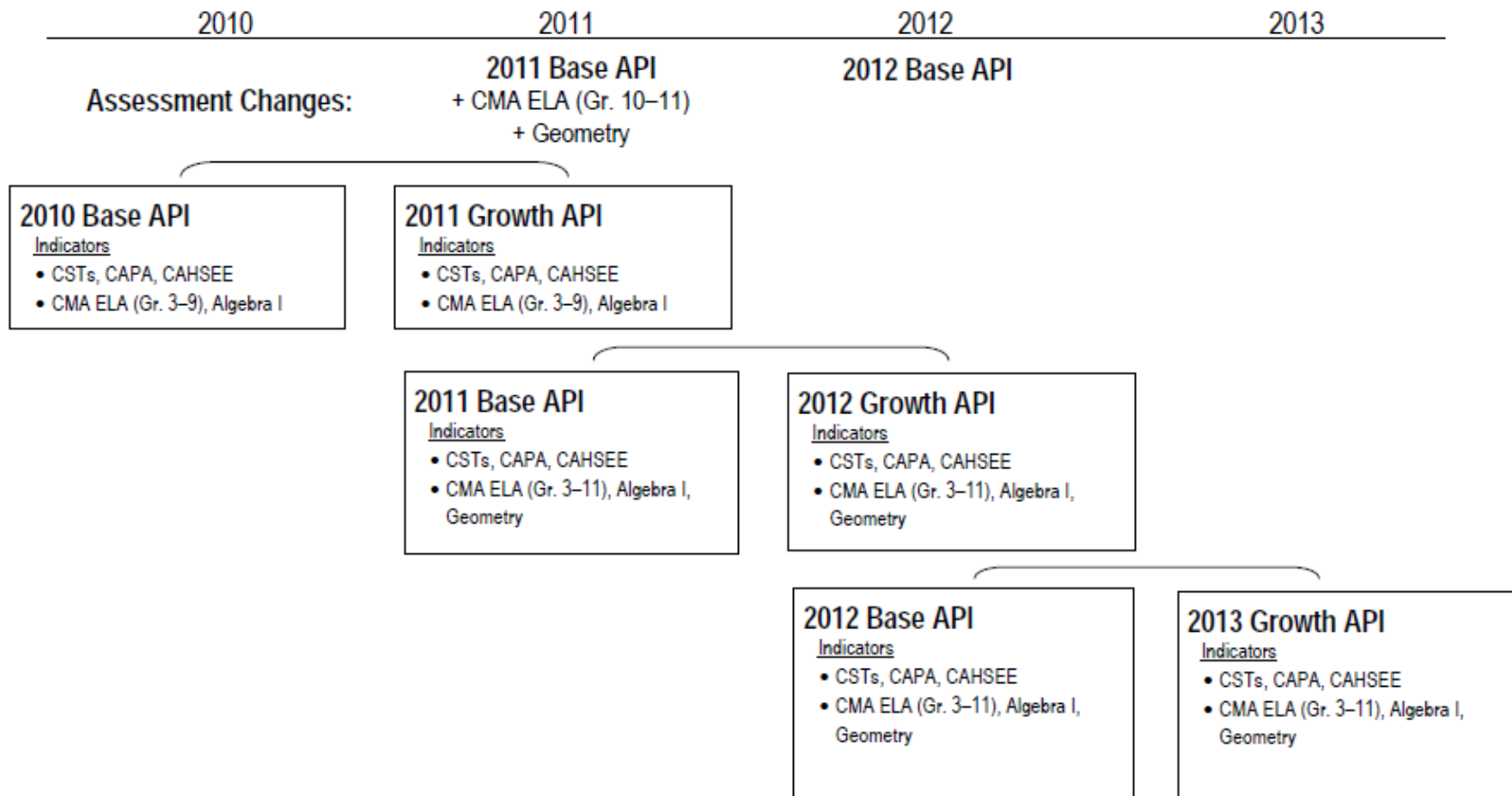


Base (API)

- Start of the Reporting Cycle.
- Based on results of 2012 STAR Testing.
- Will be compared to 2013 Growth API to determine growth for NCLB Accountability.
- Report includes statewide and similar school rankings.

Base and Growth API

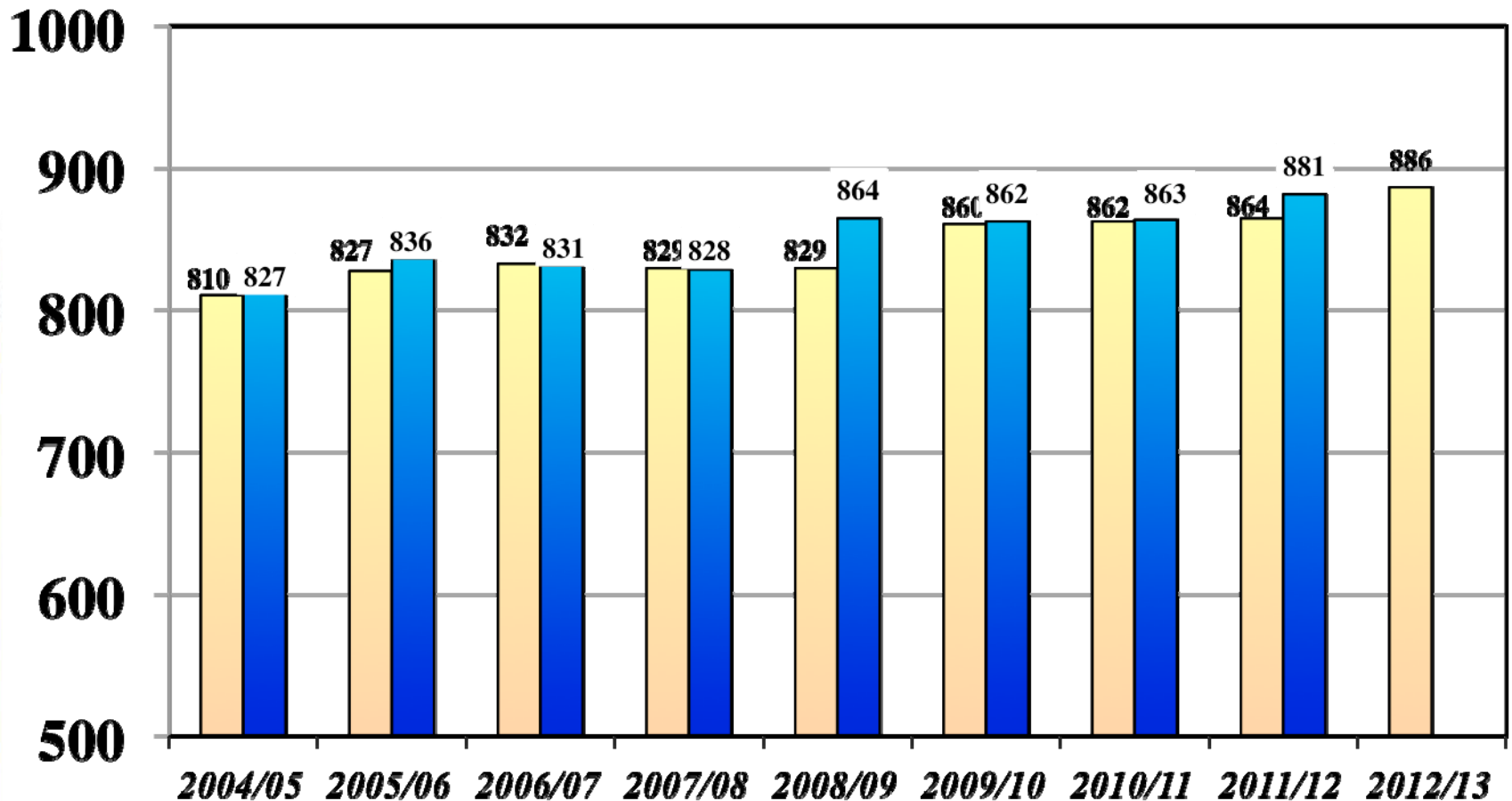
Two API Reports to Maintain Comparability and Allow Changes



Lowell Joint School District

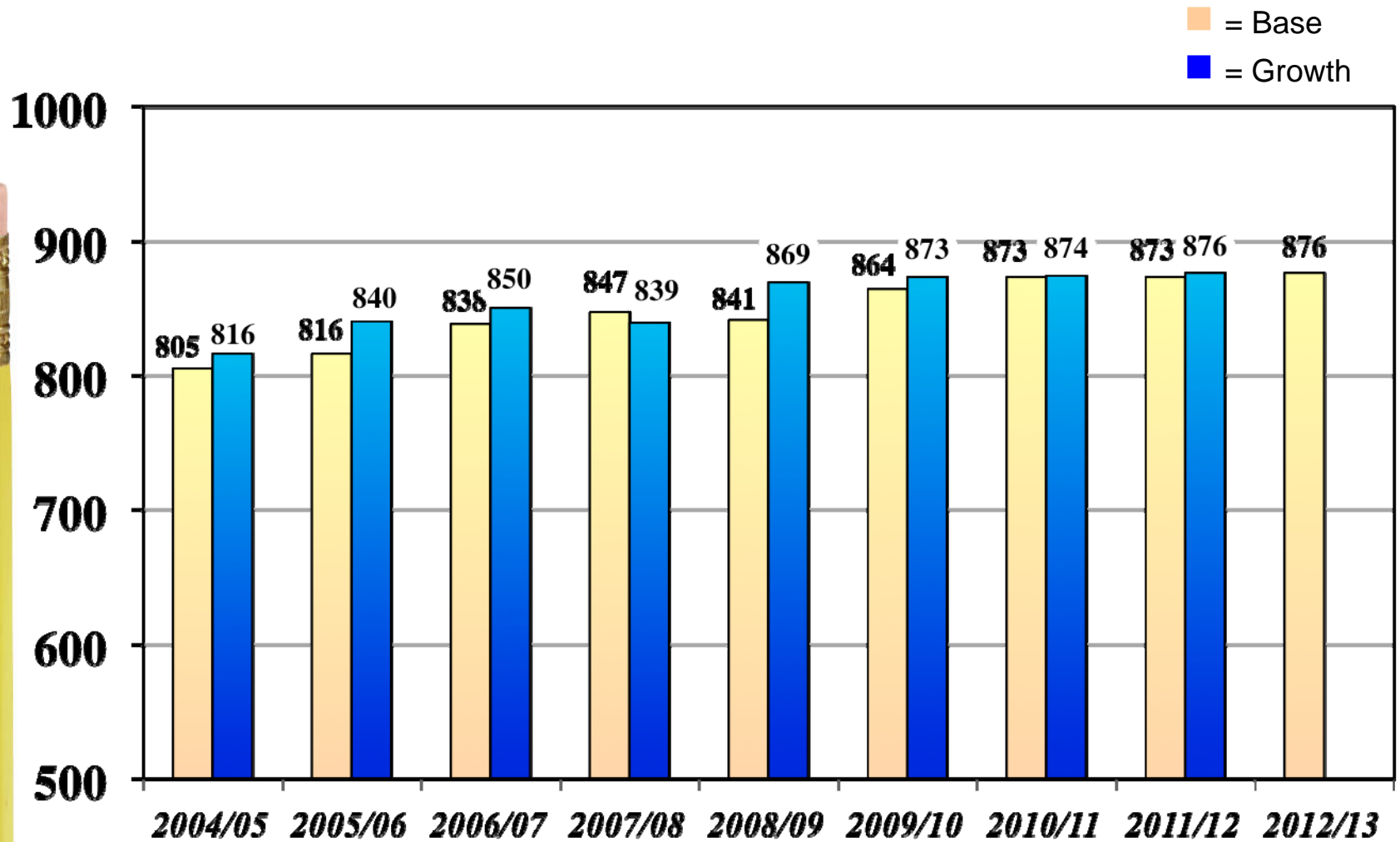
Base/Growth Academic Performance Index Results

■ = Base
■ = Growth



El Portal Elementary School

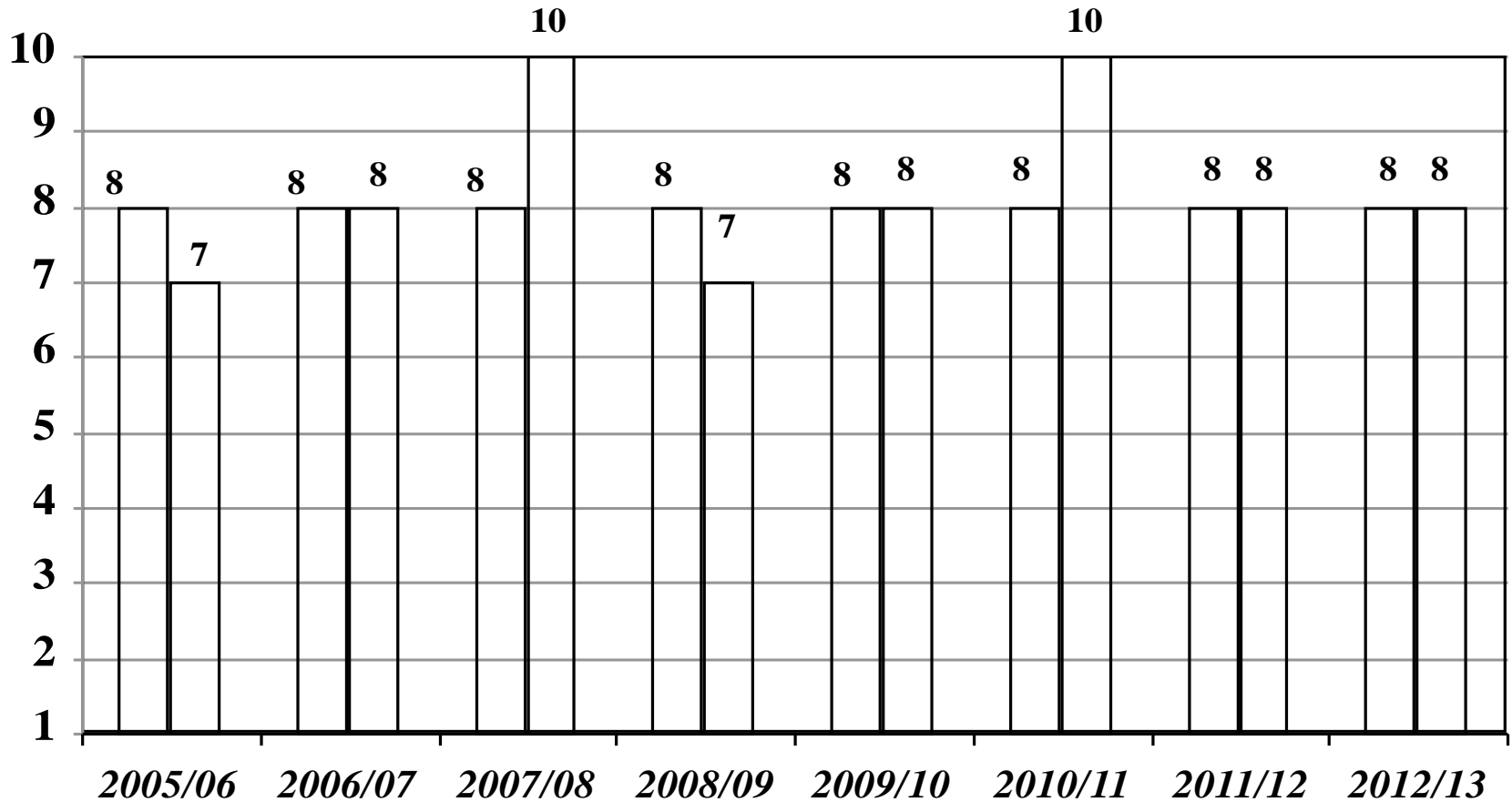
Base/Growth Academic Performance Index Results



El Portal Elementary School

RANKINGS

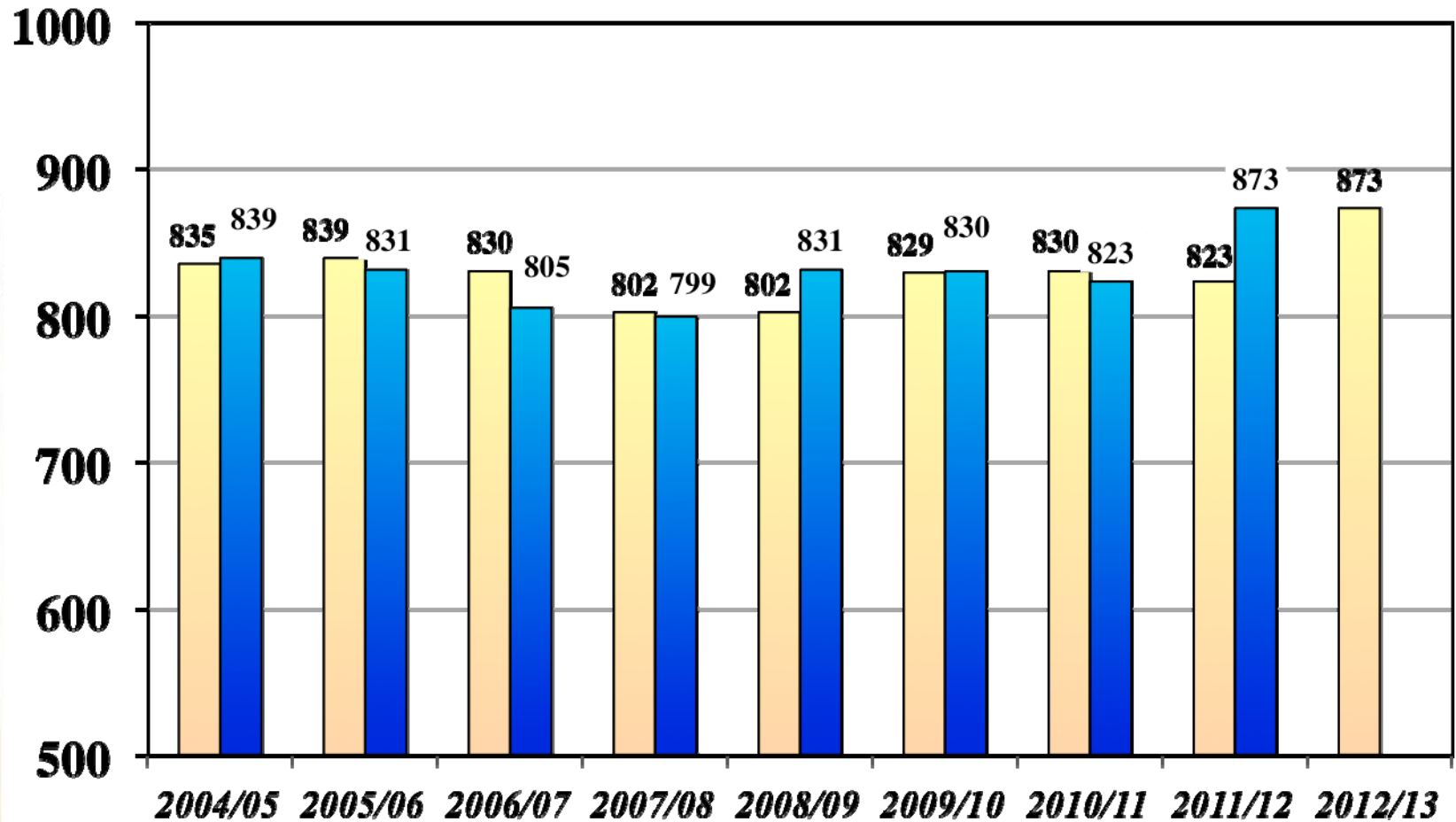
■ = Statewide
■ = Similar Schools



Jordan Elementary School

Base/Growth Academic Performance Index Results

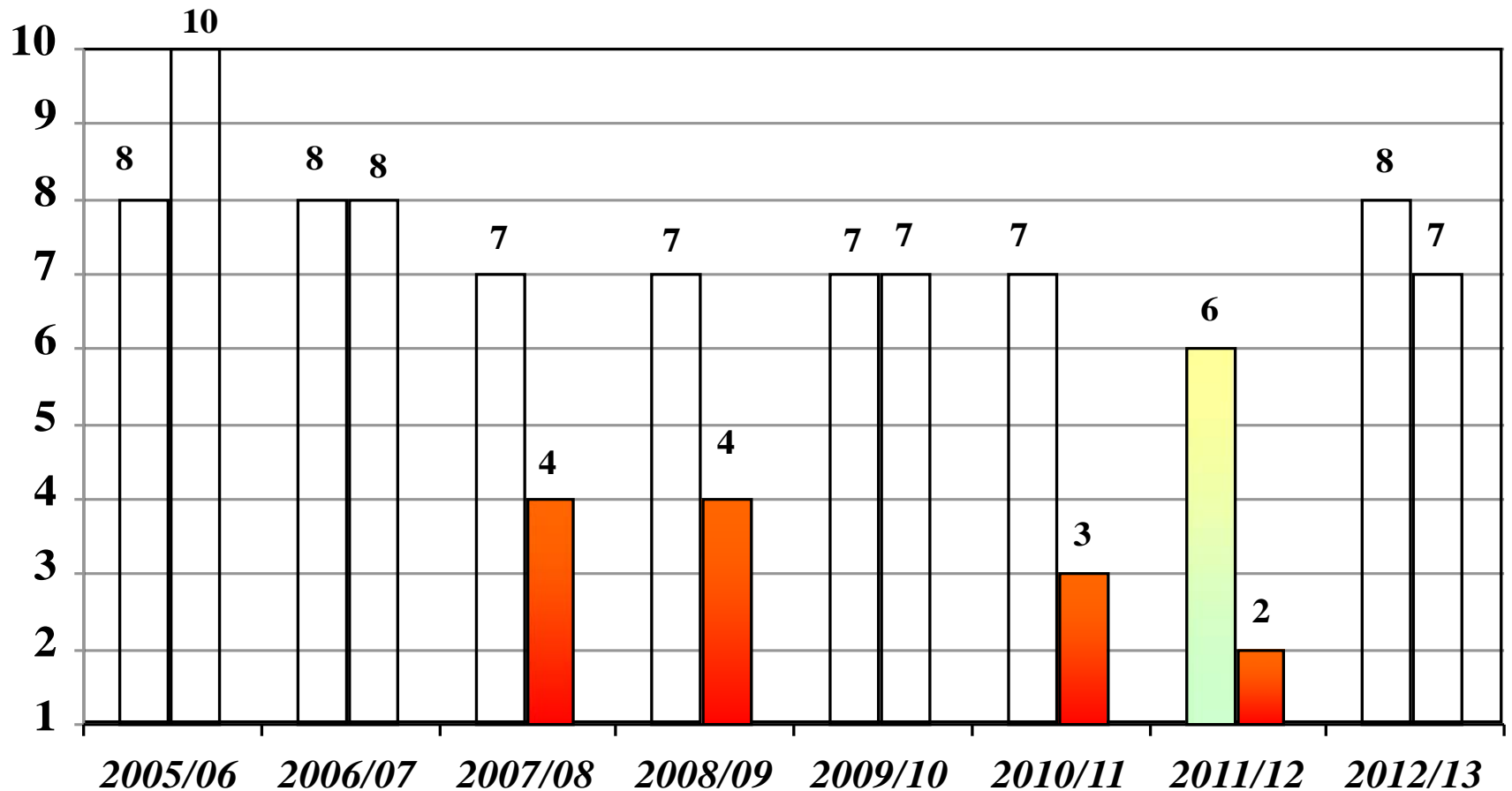
■ = Base
■ = Growth



Jordan Elementary School

RANKINGS

■ = Statewide
■ = Similar Schools

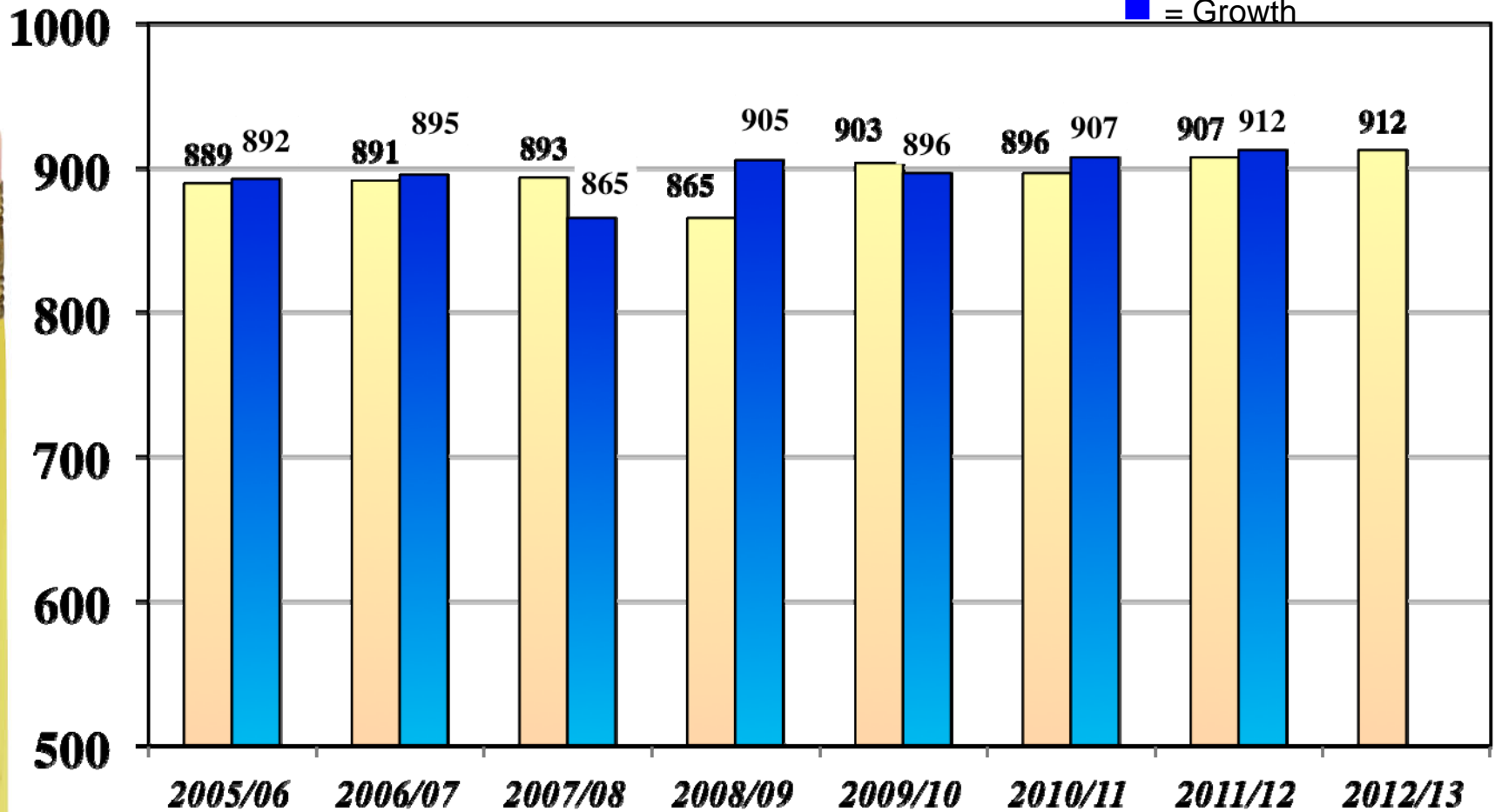


Macy Elementary School

Base/Growth Academic Performance Index Results

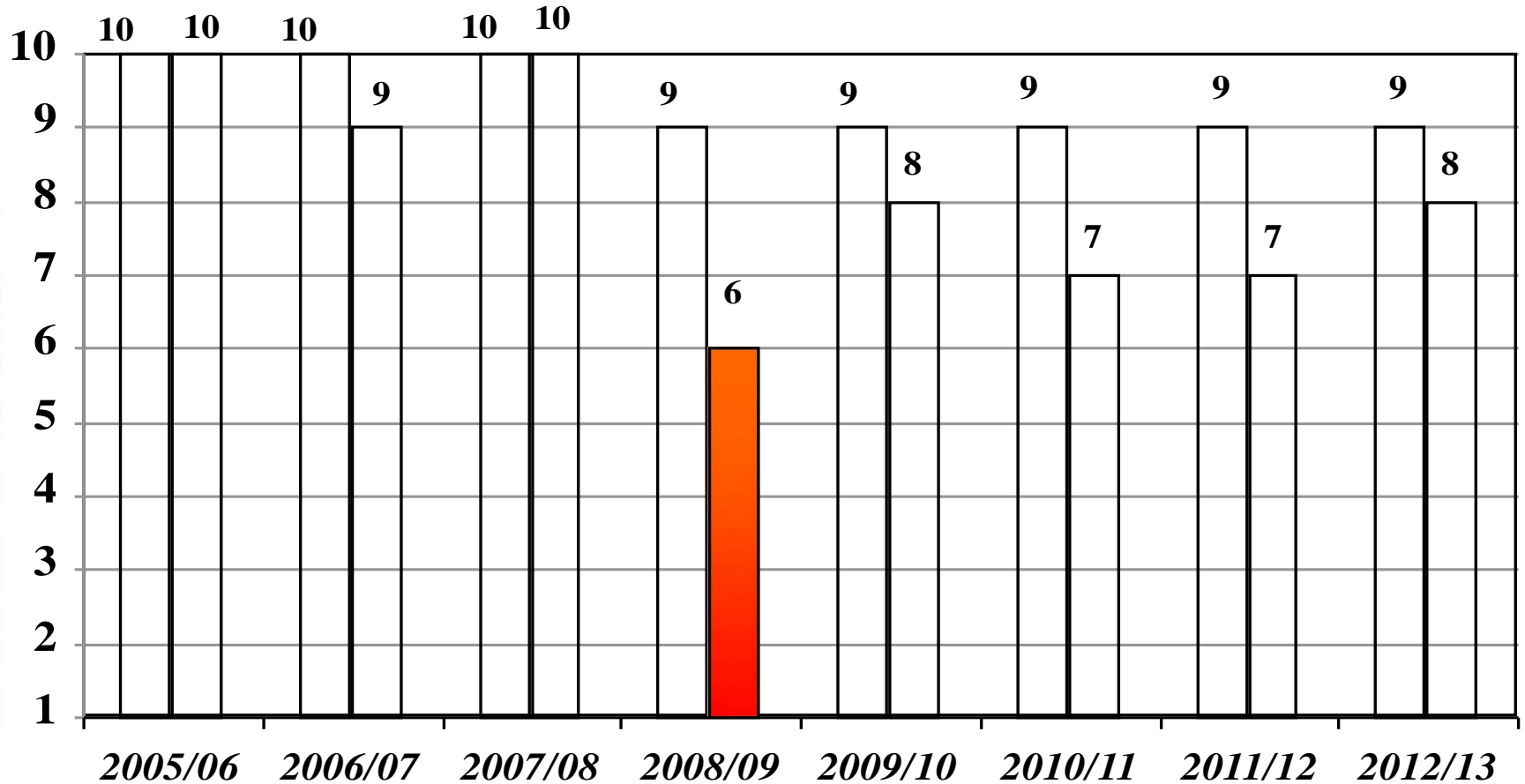
■ = Base

■ = Growth



Macy Elementary School RANKINGS

■ = Statewide
■ = Similar Schools

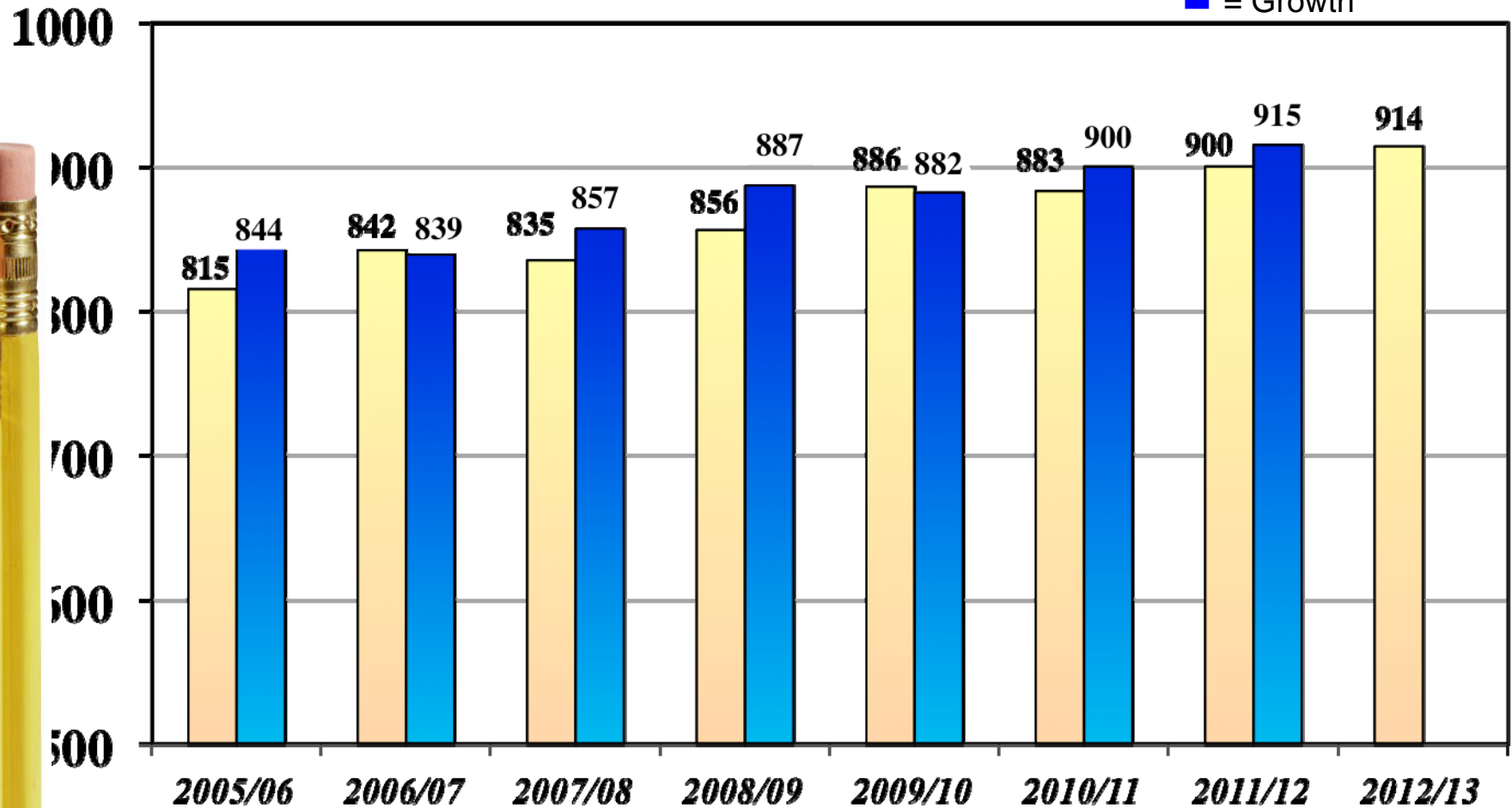


Meadow Green Elementary School

Base/Growth Academic Performance Index Results

■ = Base

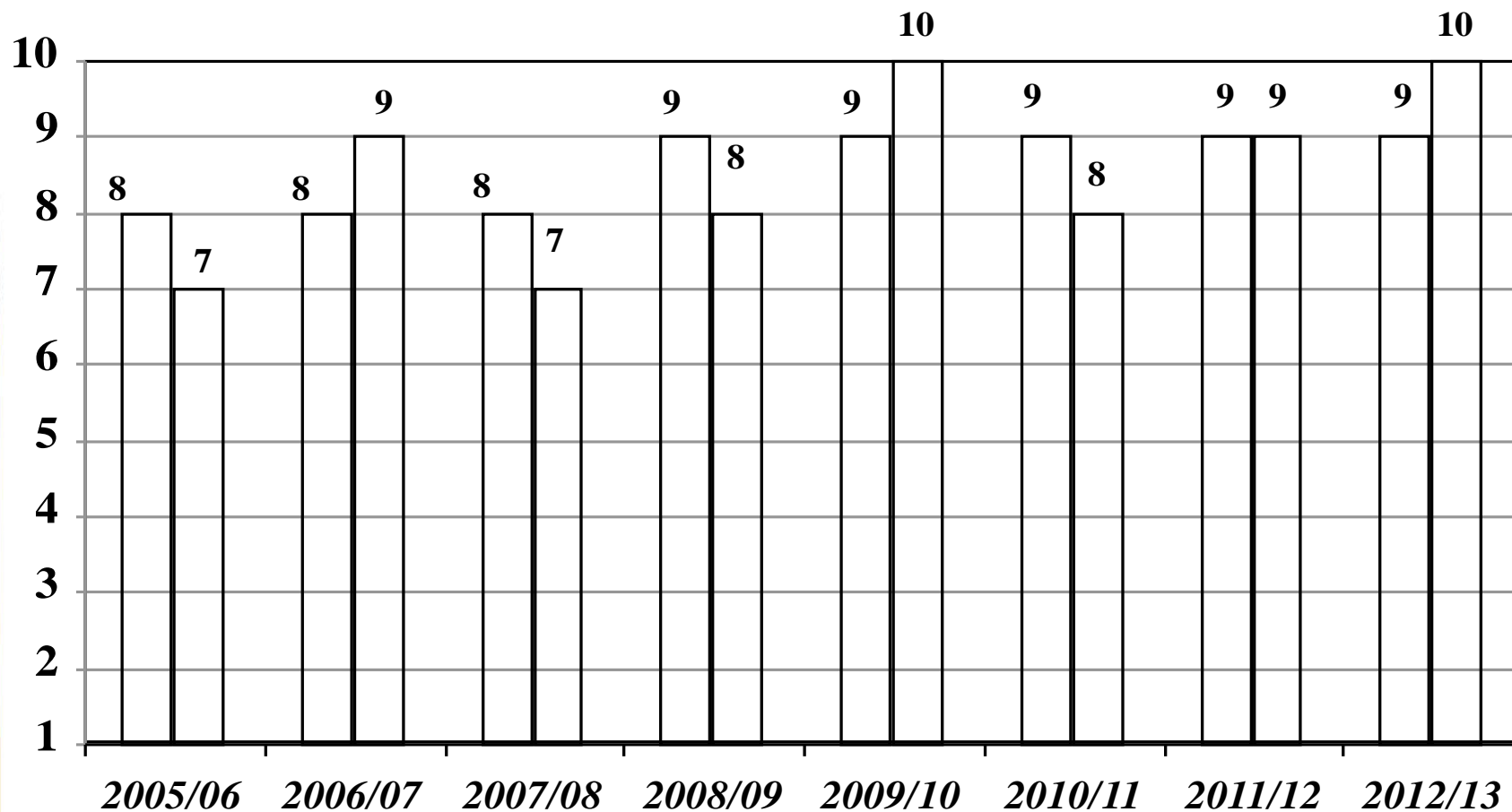
■ = Growth



Meadow Green Elementary School

RANKINGS

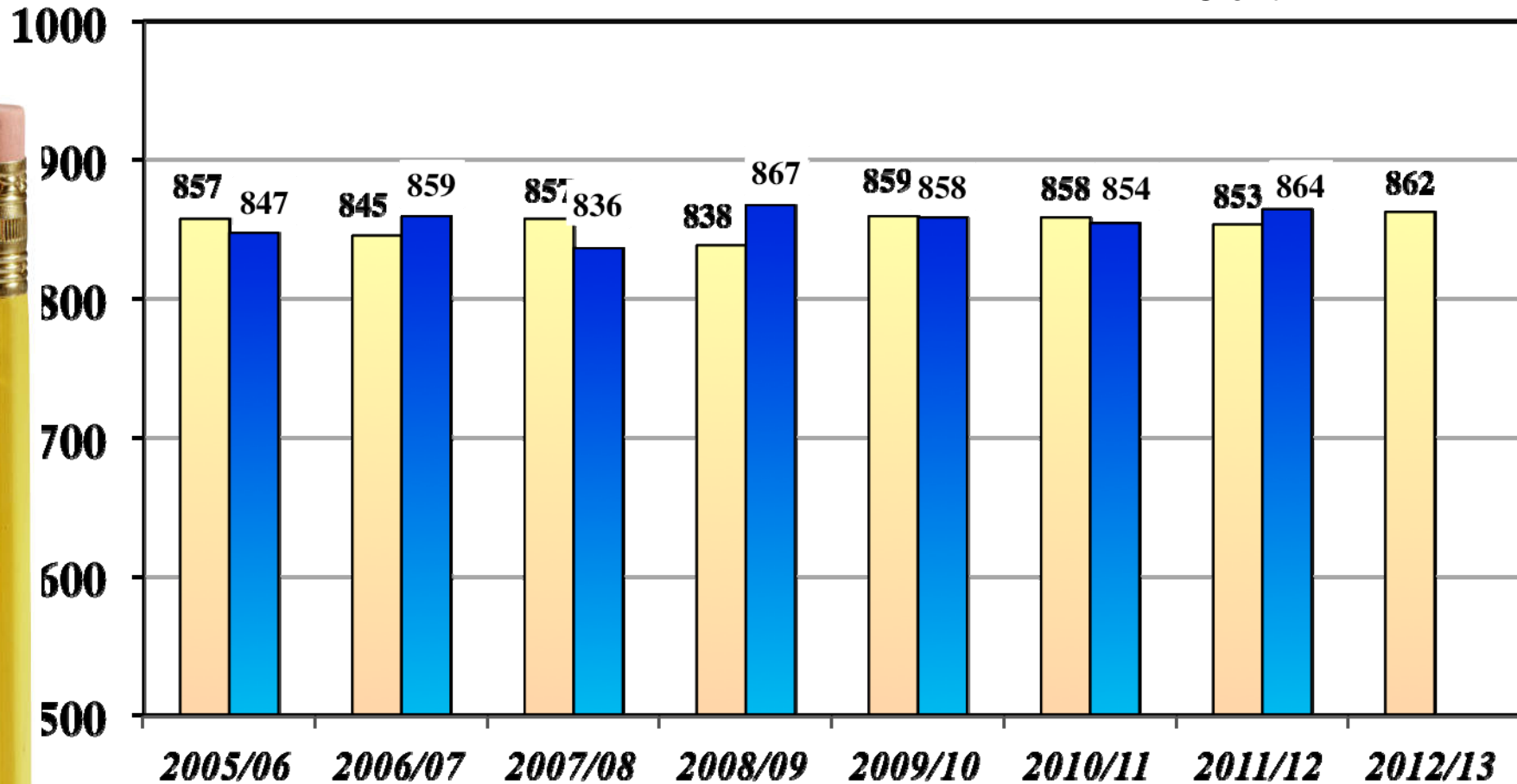
■ = Statewide
■ = Similar Schools



Olita Elementary School

Base/Growth Academic Performance Index Results

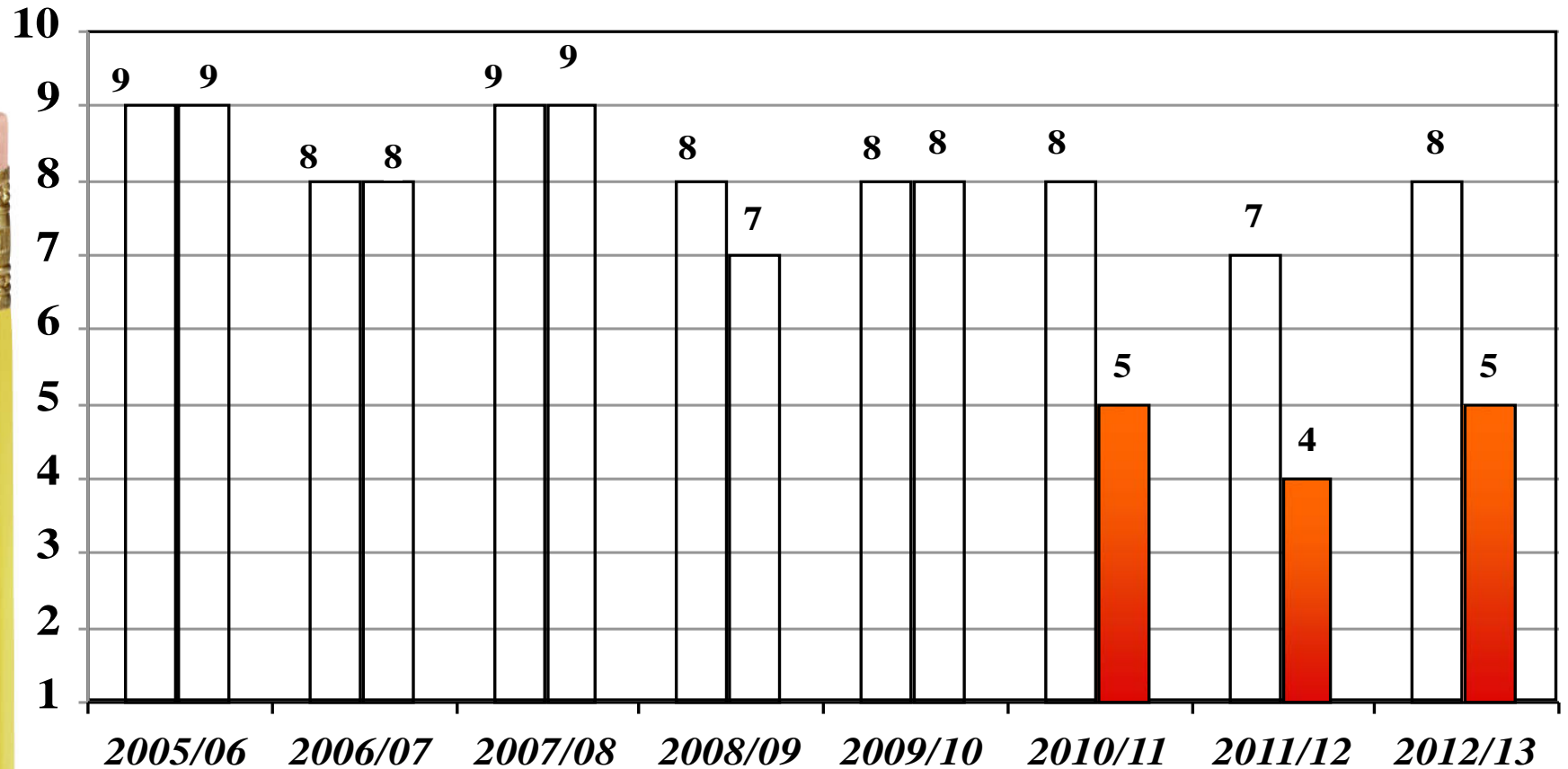
■ = Base
■ = Growth



Olita Elementary School

RANKINGS

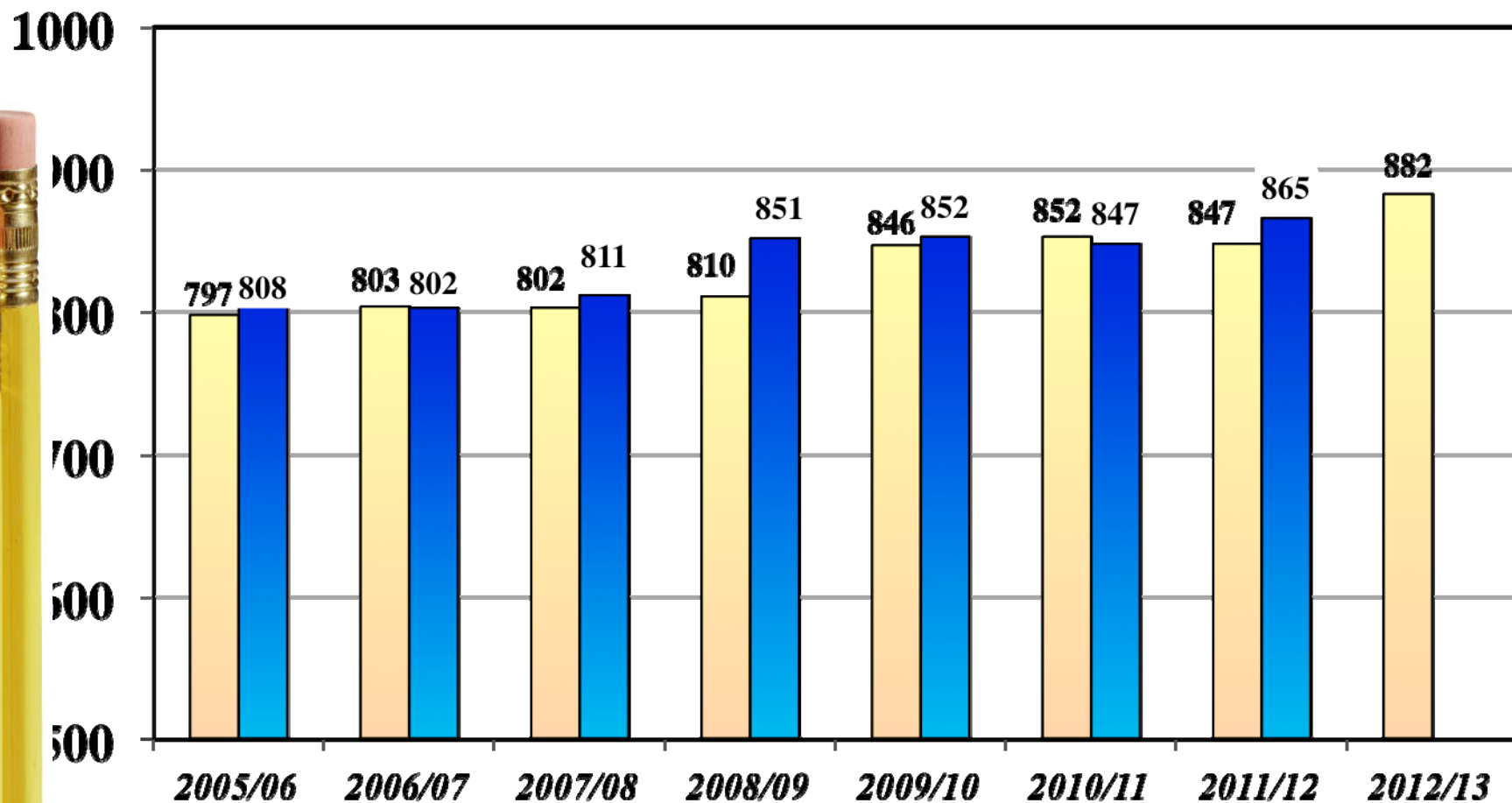
■ = Statewide
■ = Similar Schools



Rancho-Starbuck Junior High School

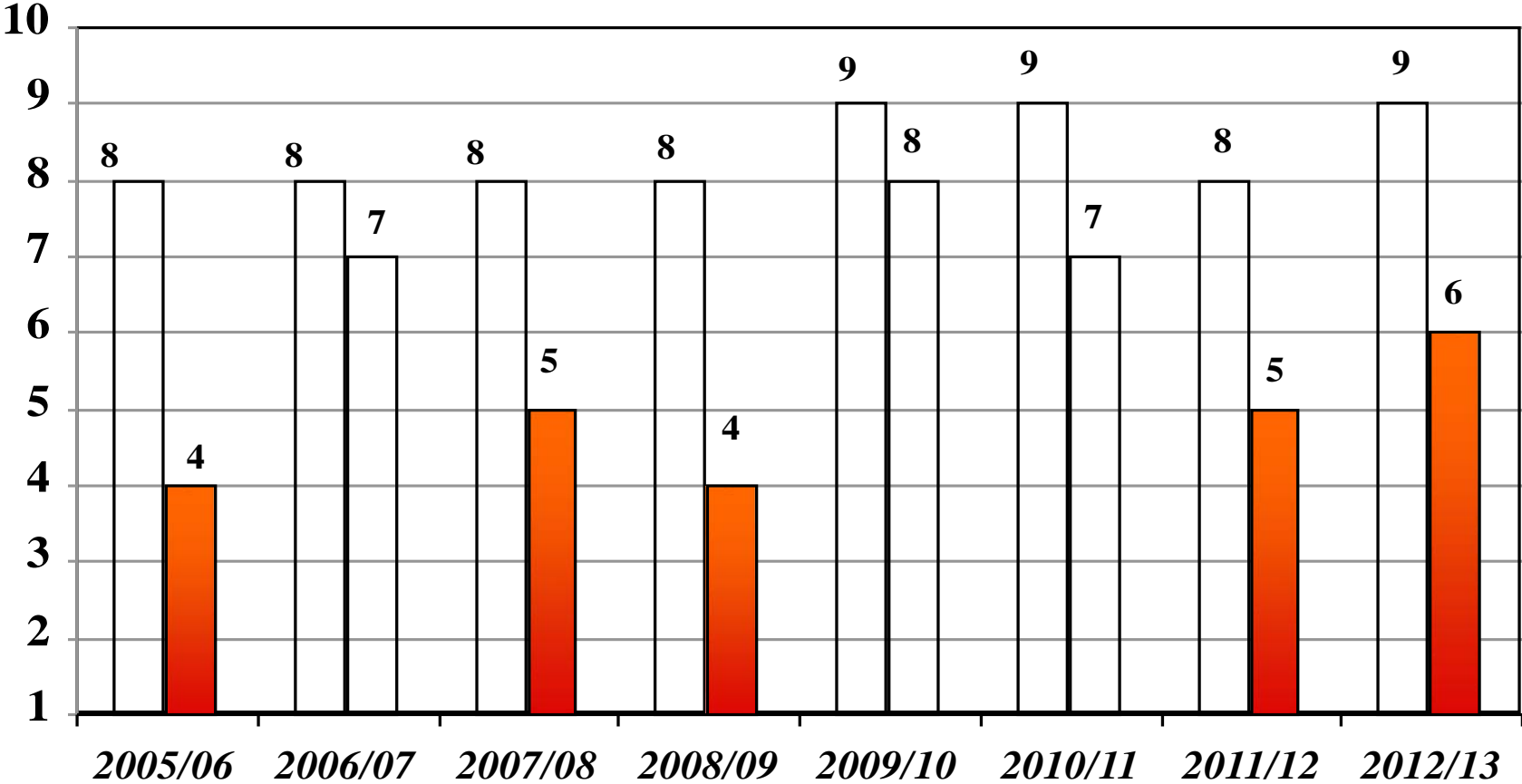
Base/Growth Academic Performance Index Results

■ = Base
■ = Growth



Rancho-Starbuck Junior High School RANKINGS

■ = Statewide
■ = Similar Schools



2011/12 API

School Content Area Weights

Content Areas	Content Weights
English-Language Arts	54.2%
Mathematics	36.1%
Science	6.5%
History-Social Science	3.3%



Board Member Questions

