

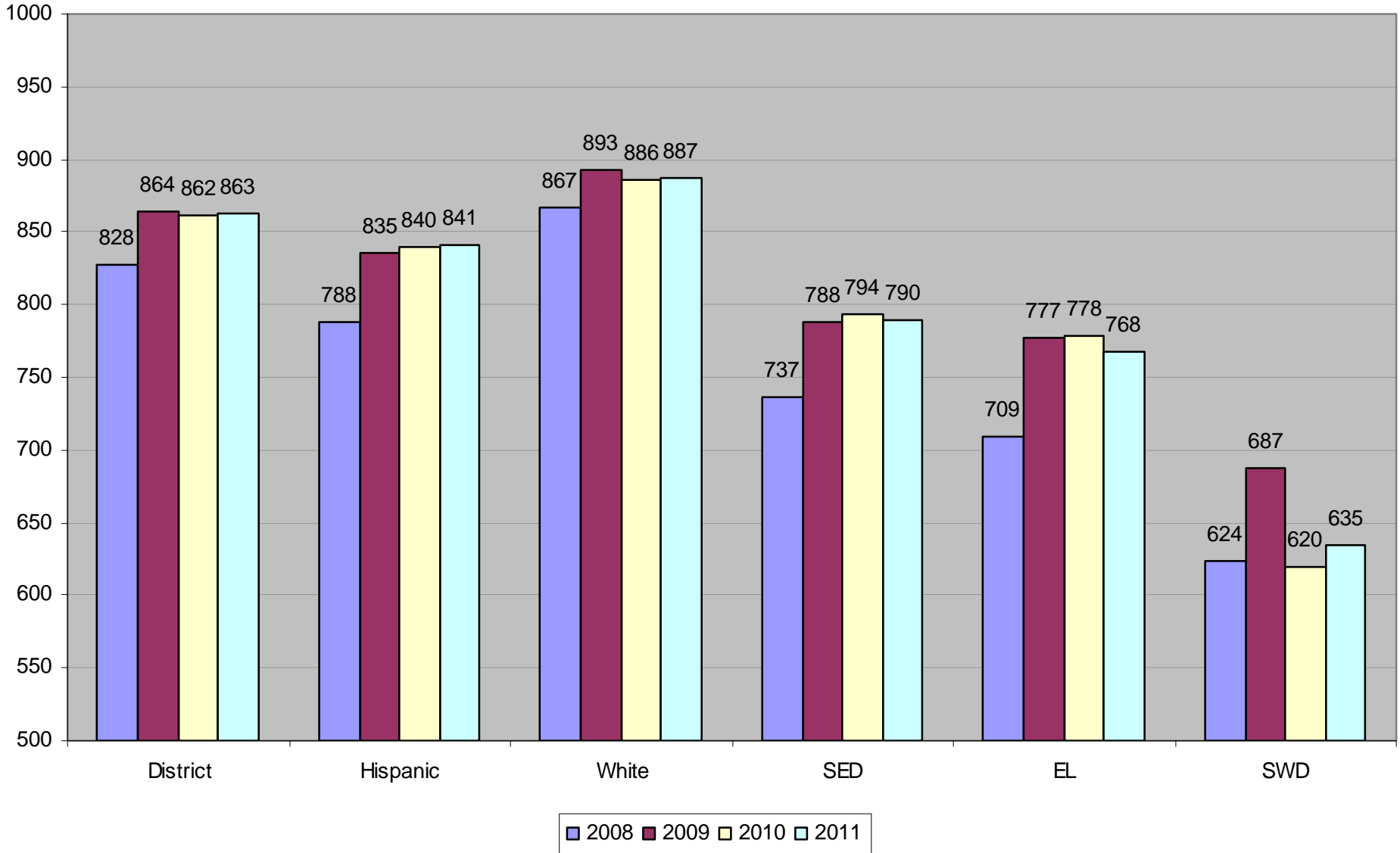


Lowell Joint School District

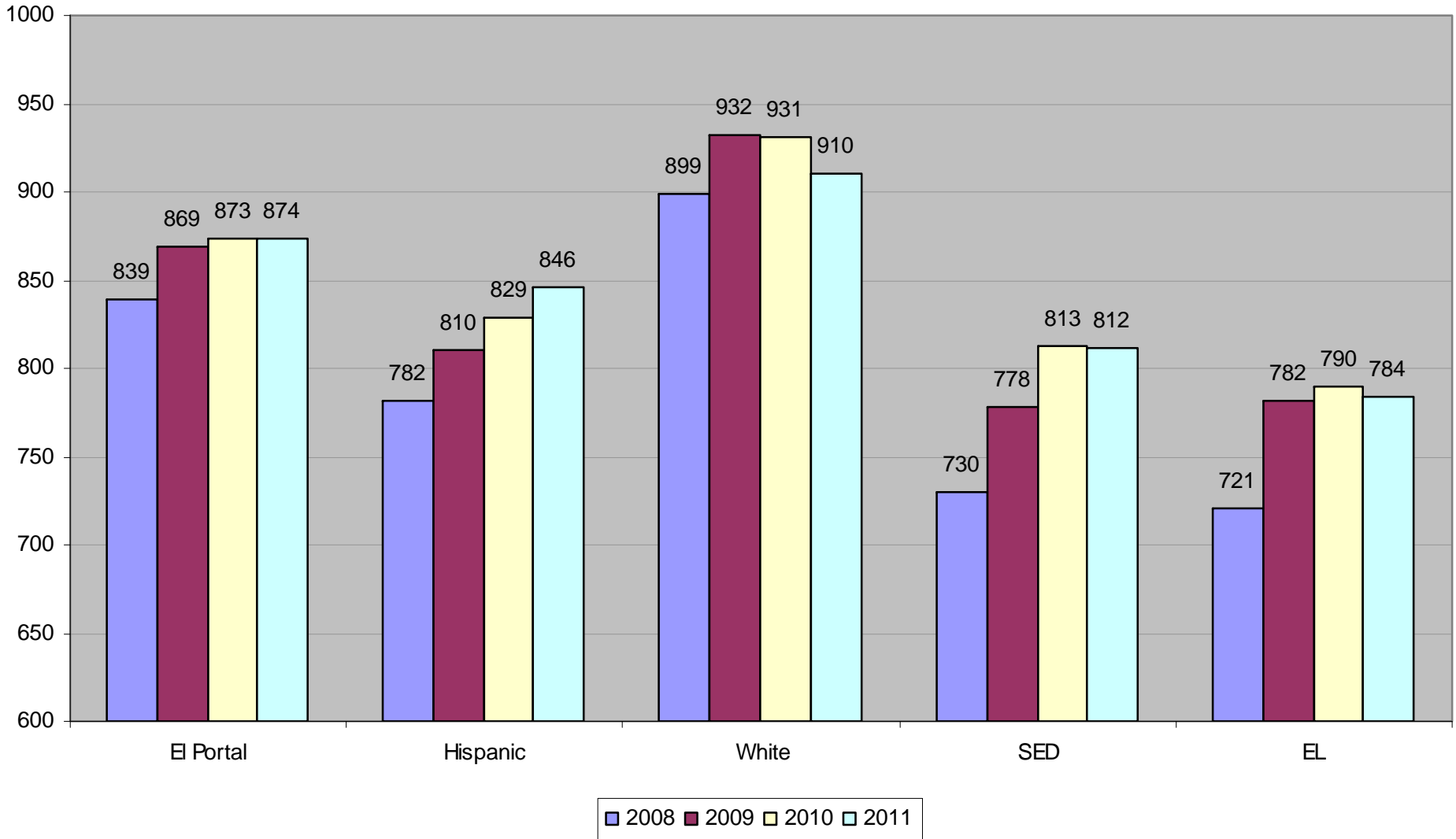
API & AYP
Significant Subgroup
Historical Comparison
2008-2011

October 3, 2011

Lowell Joint School District Historical Comparison - Significant Subgroup Growth APIs

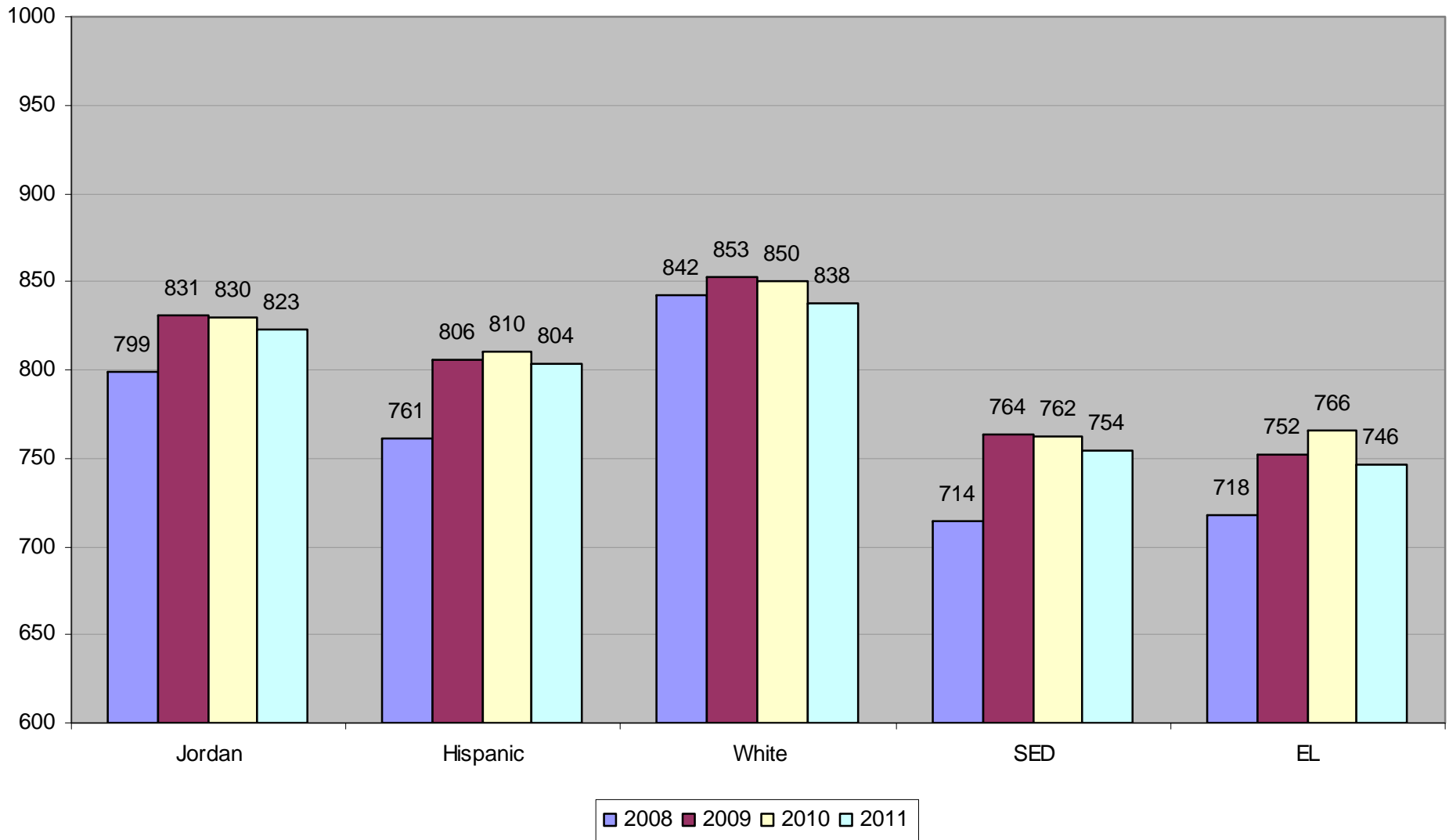


El Portal Elementary School Historical Comparison - Significant Subgroups Growth API



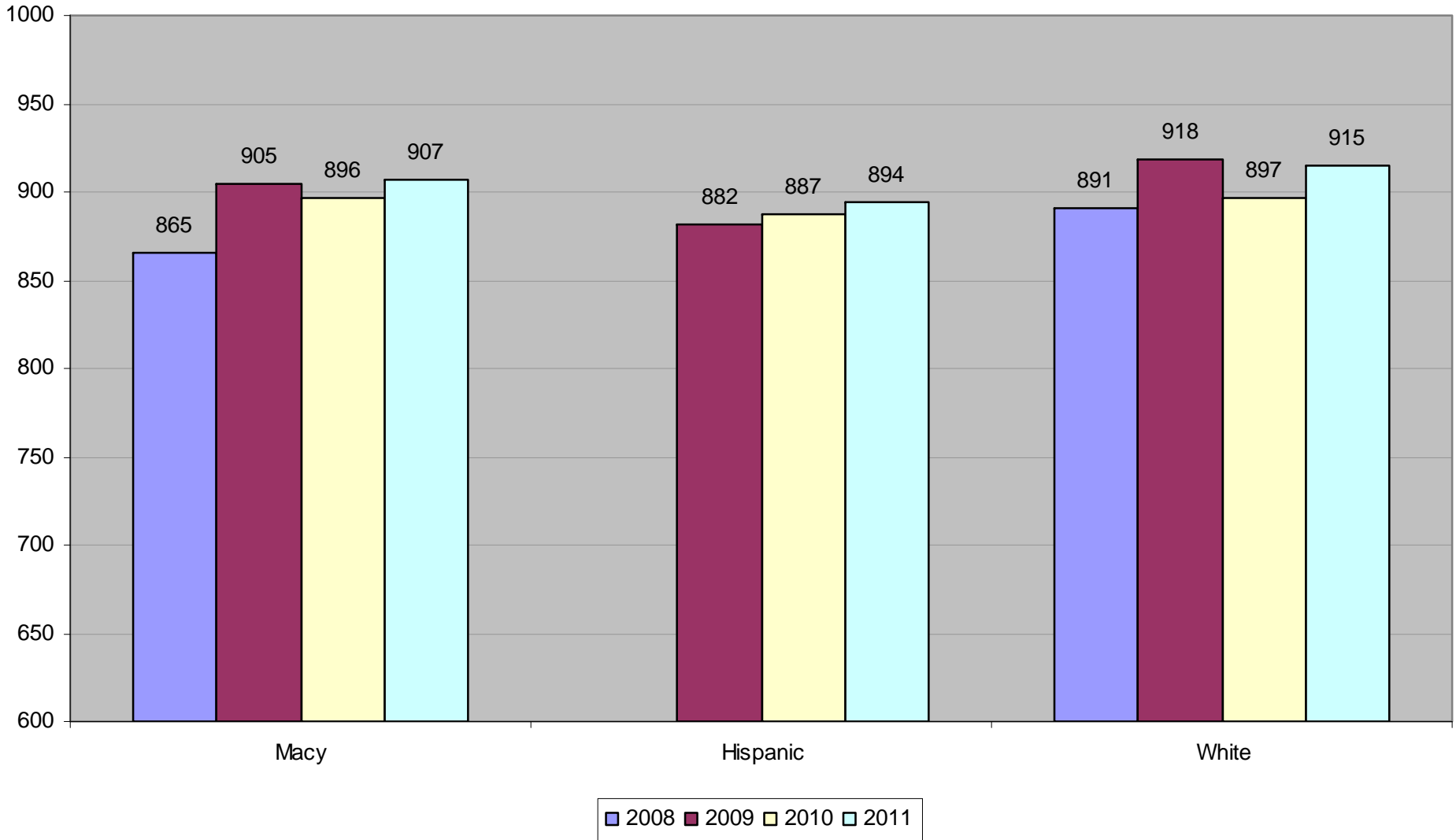
Jordan Elementary School

Historical Comparison - Significant Subgroups Growth API



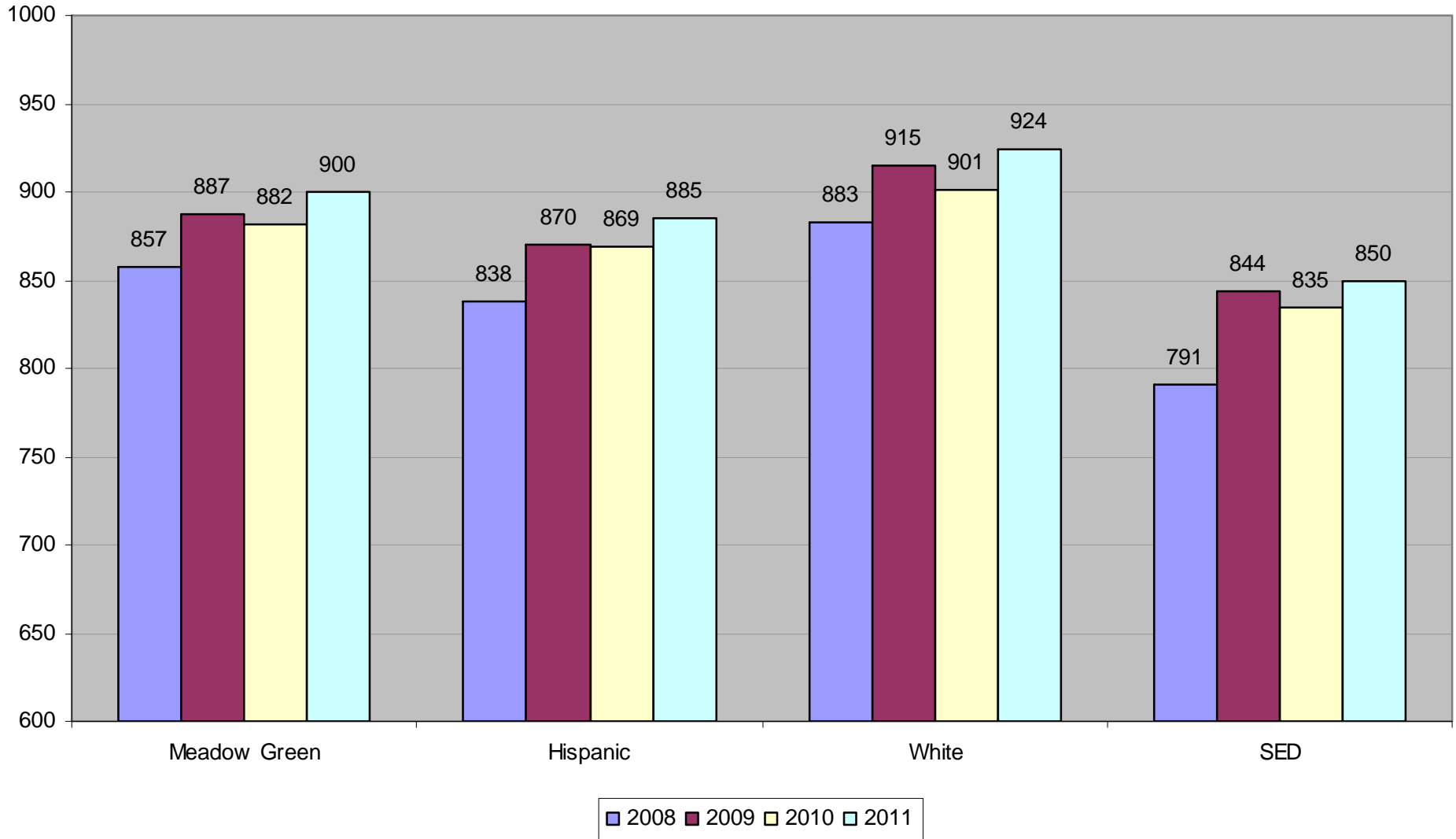
Macy Elementary School

Historical Comparison - Significant Subgroups Growth API



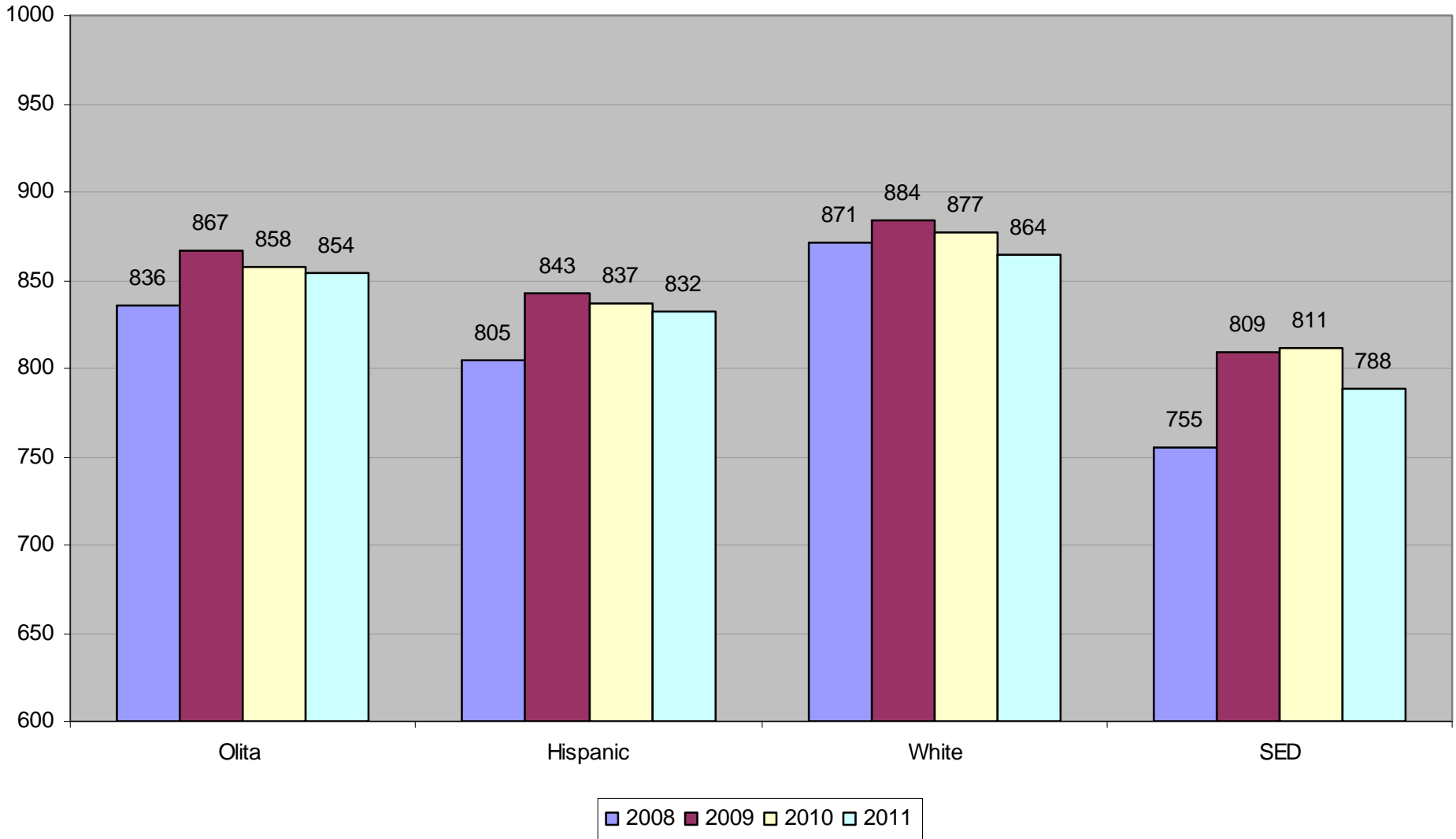
Meadow Green Elementary School

Historical Comparison - Significant Subgroups Growth API



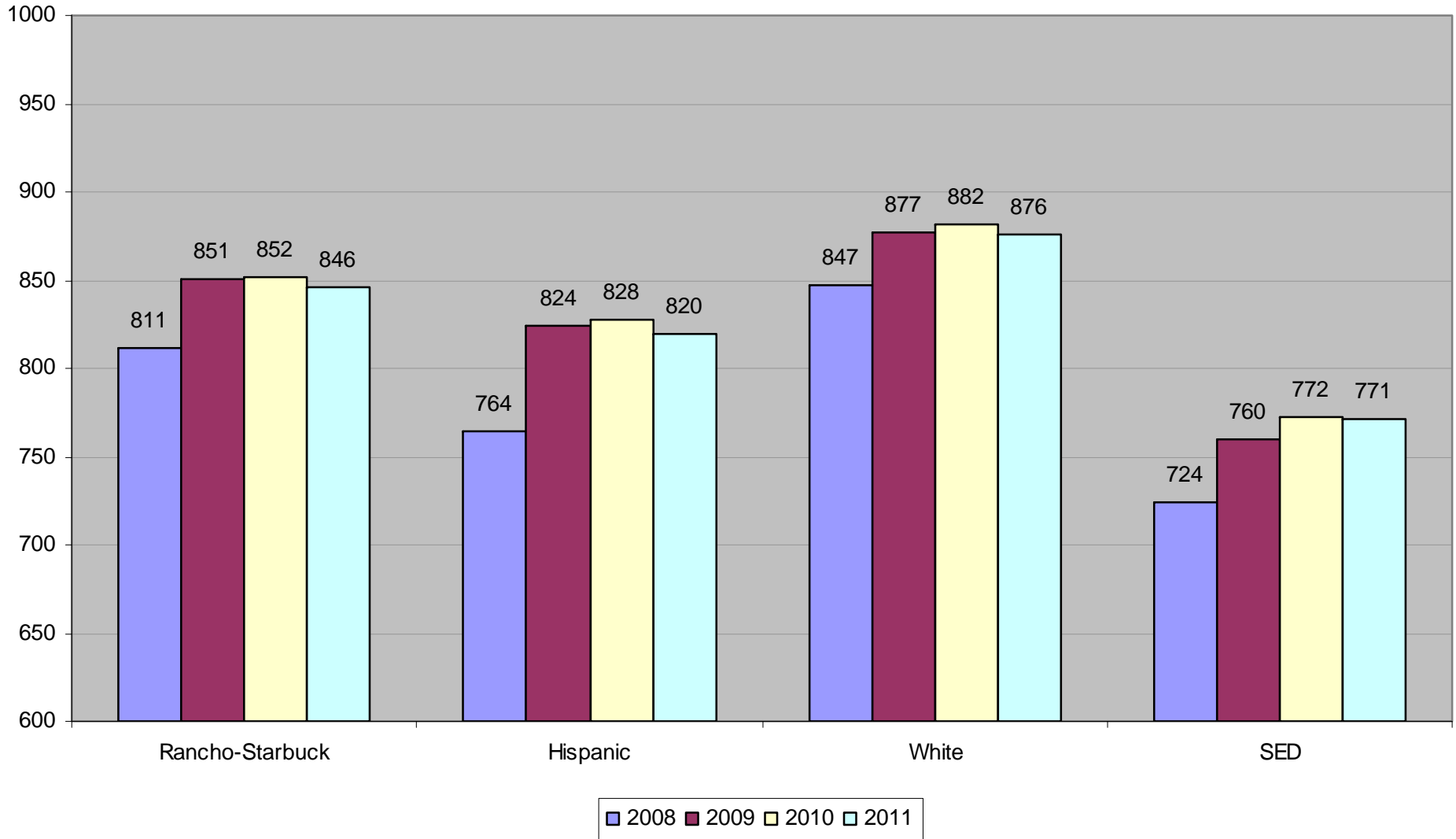
Olita Elementary School

Historical Comparison - Significant Subgroups Growth API



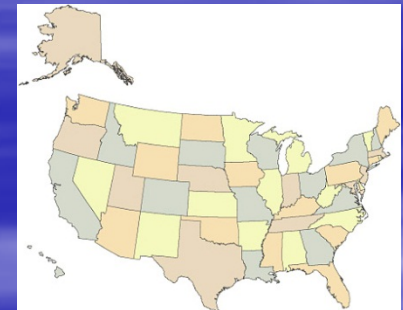
Rancho-Starbuck Intermediate School

Historical Comparison - Significant Subgroups Growth API

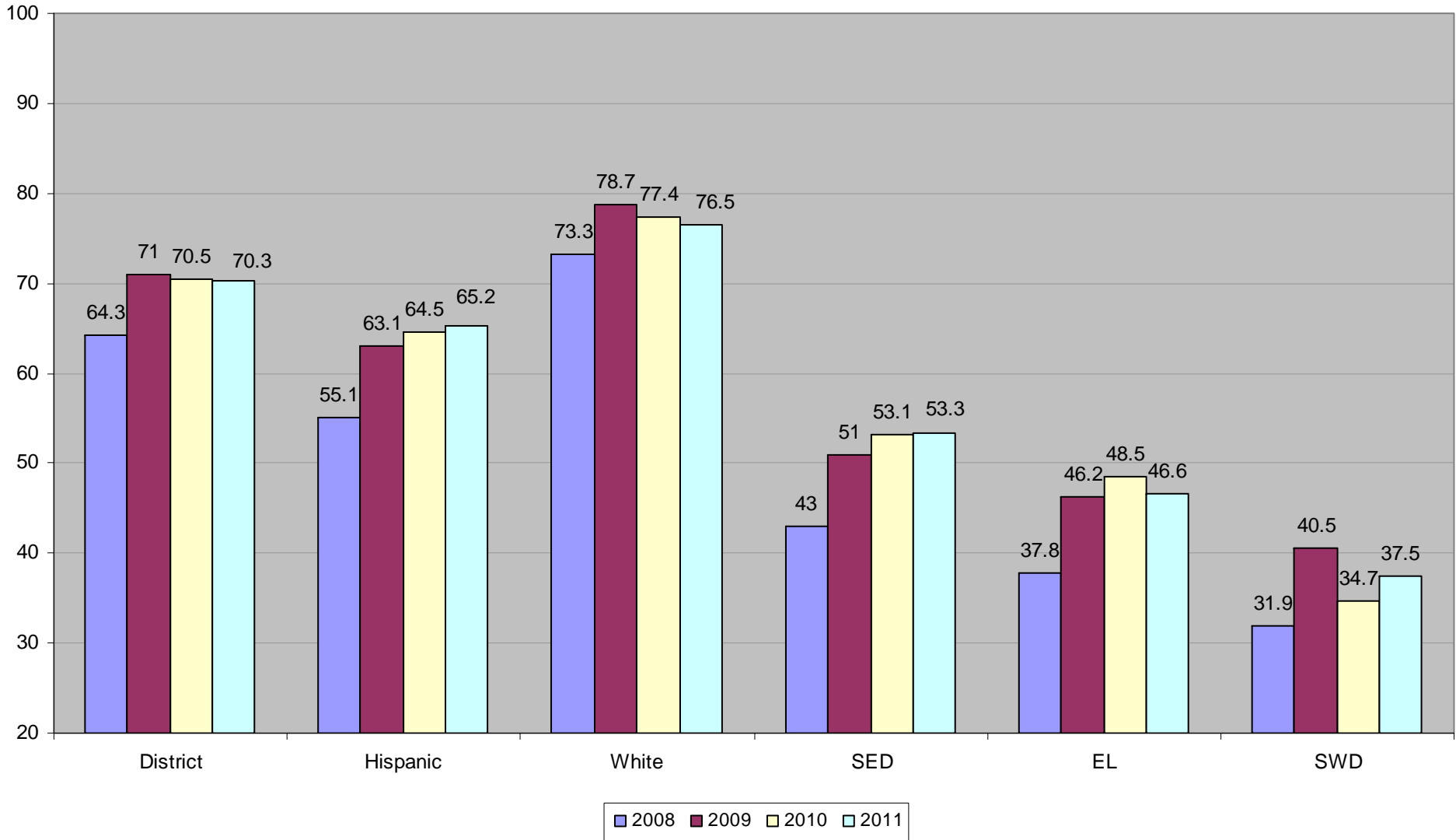


Adequate Yearly Progress (AYP)

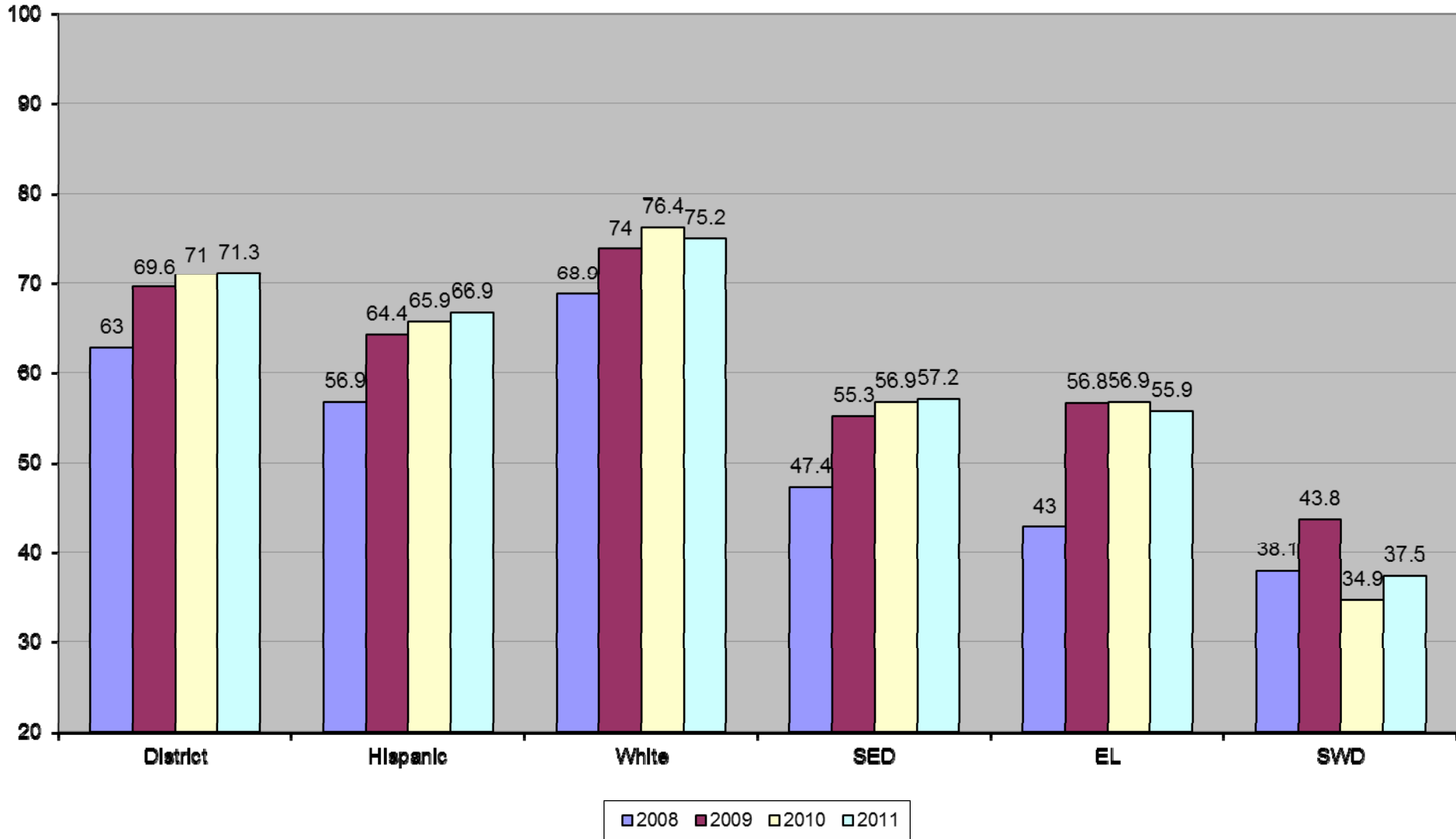
- Federal accountability reporting system
- Looks at the percentage of students meeting proficiency
- CST, CMA, and CAPA tests used to determine whether a district/school has met its AYP
- Criteria for meeting AYP
 - Participation rate of 95%
 - Percent proficient (ELA and Math)
 - Additional API Indicator (710 or more)
 - Criteria must be met for students districtwide/schoolwide as well as significant subgroups



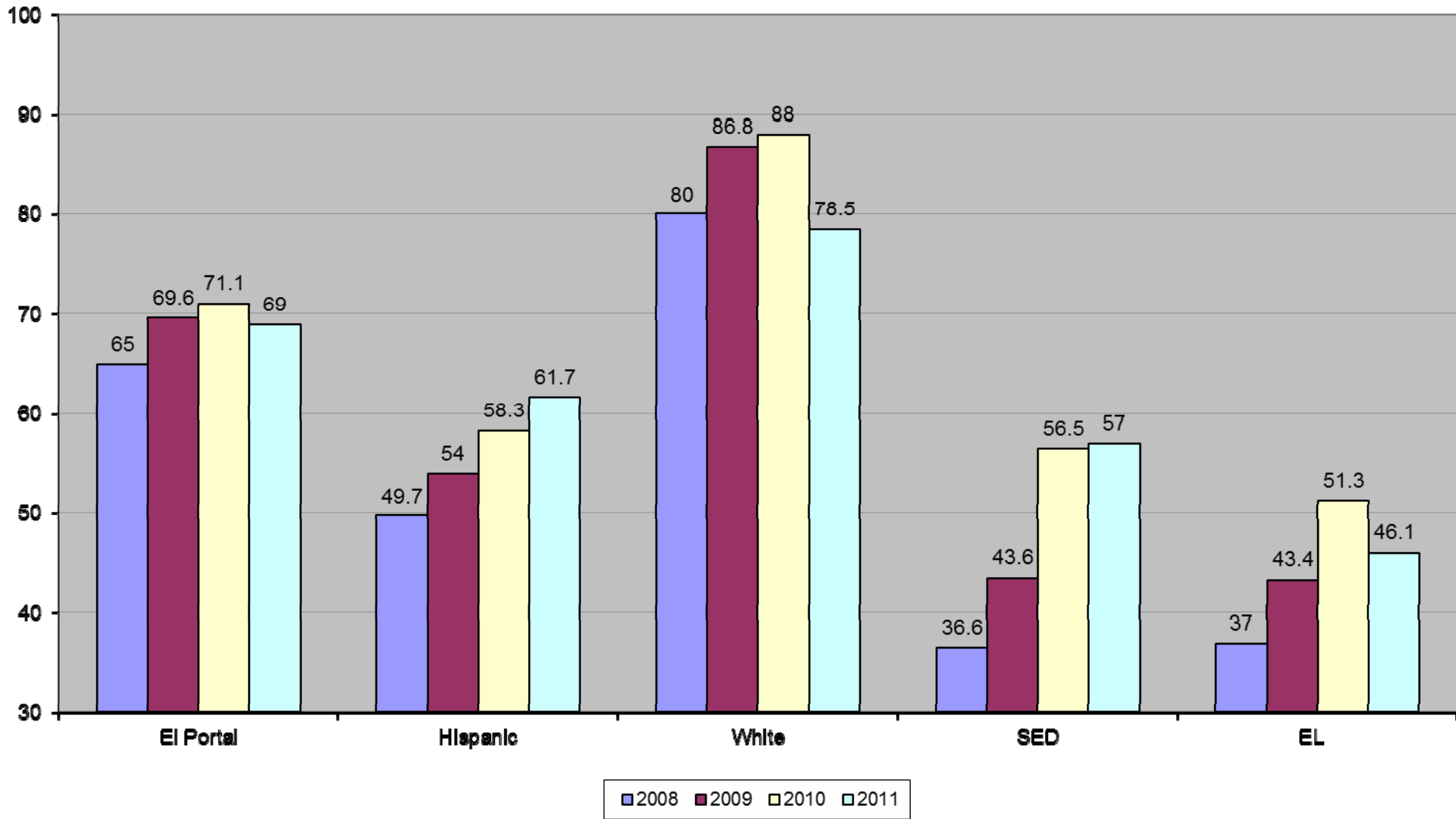
Lowell Joint School District AYP Percent Proficient Comparison 2008-2011 English-Language Arts



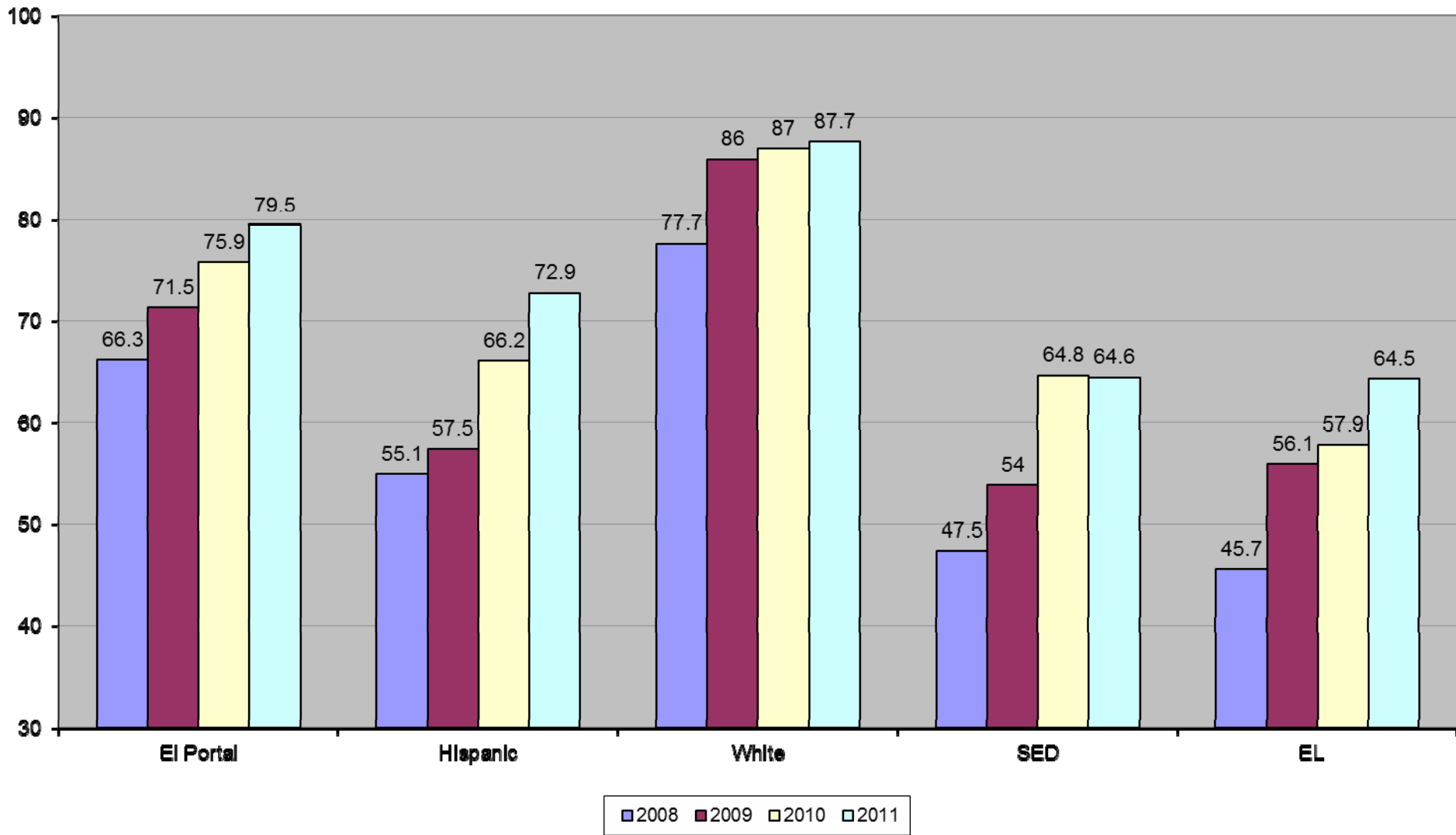
Lowell Joint School District AYP Percent Proficient Comparison 2008-2011 Mathematics



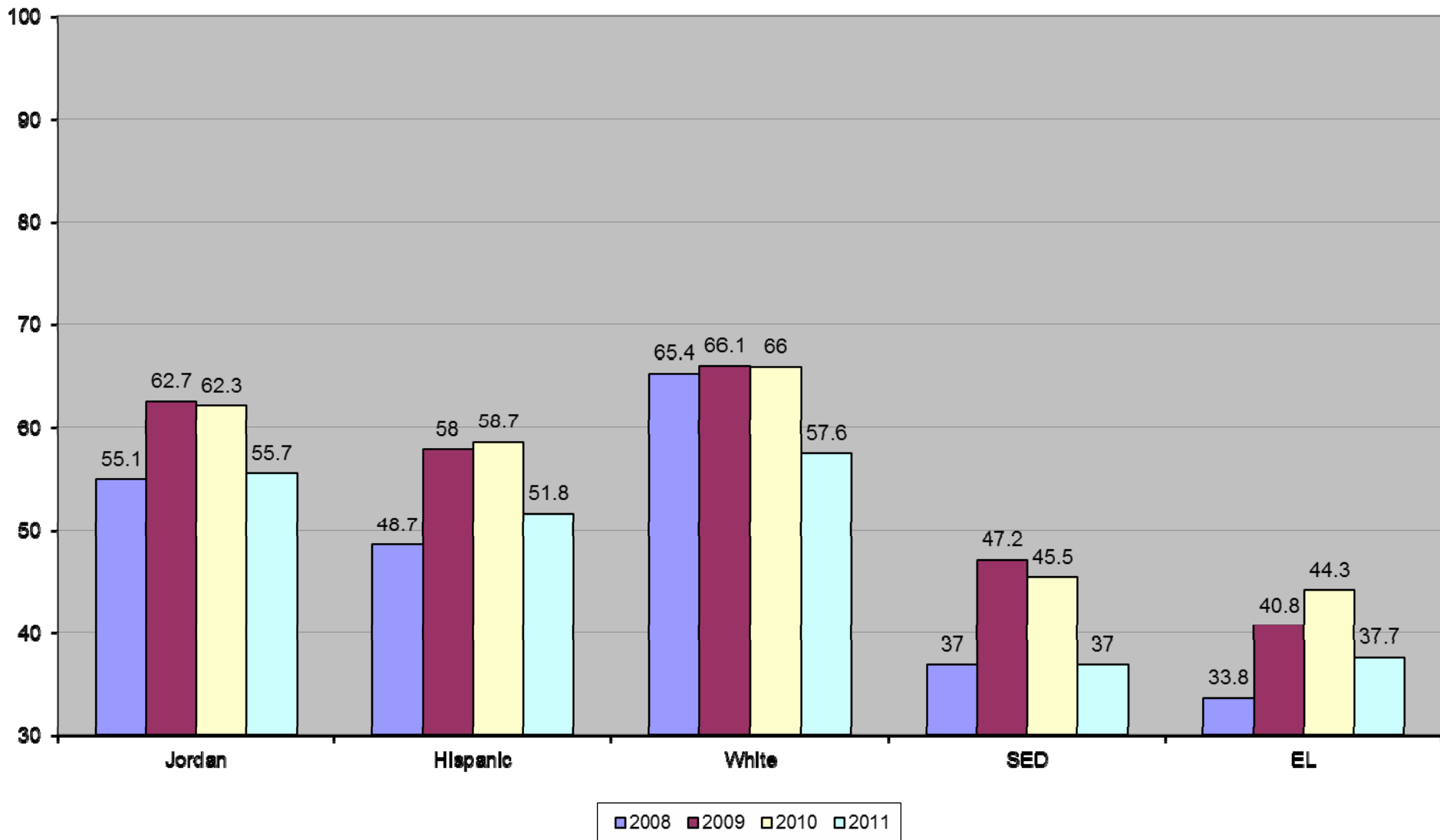
El Portal Elementary School AYP Percent Proficient Comparison 2008-2011 English-Language Arts



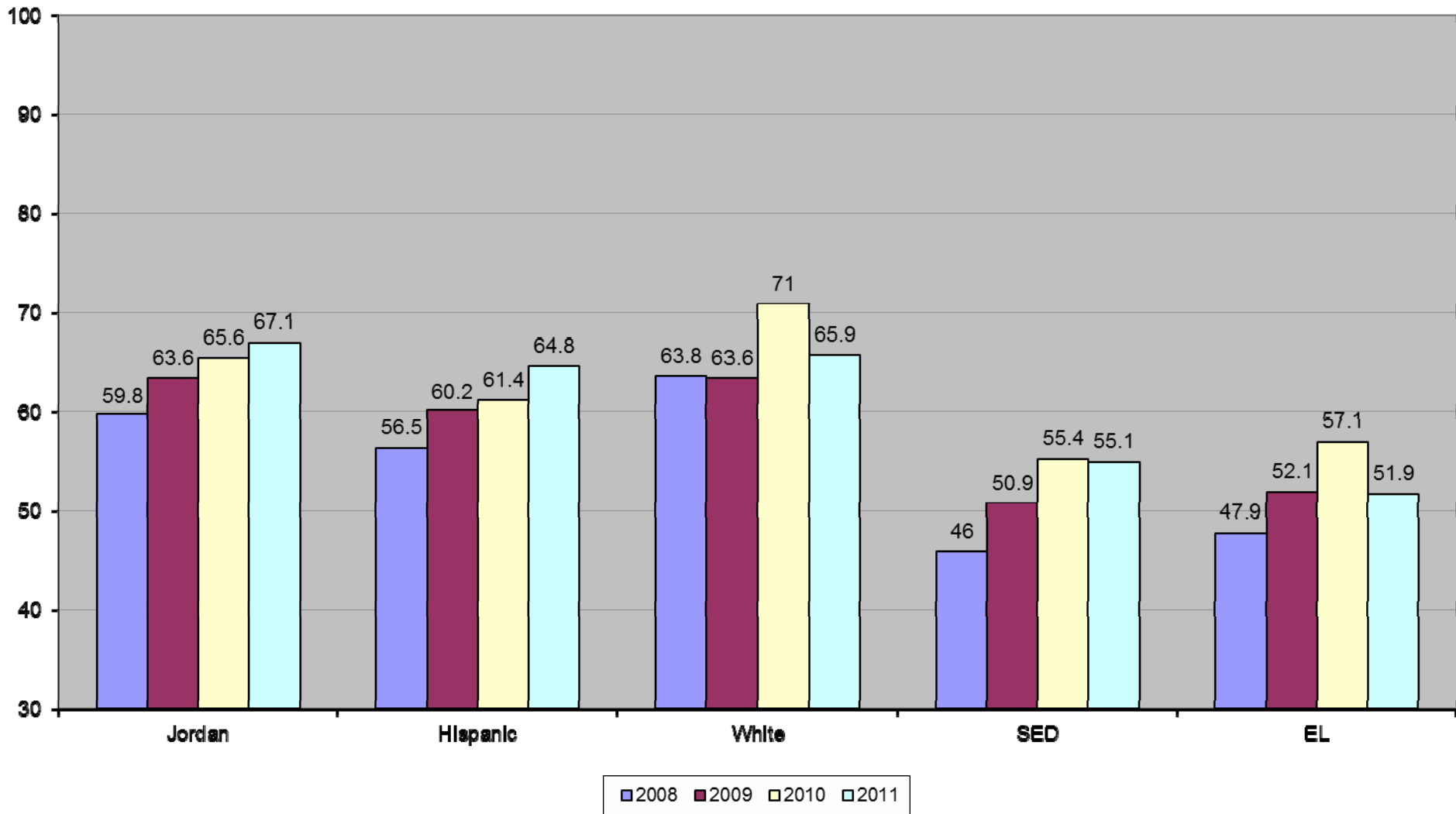
EI Portal Elementary School AYP Percent Proficient Comparison 2008-2011 Mathematics



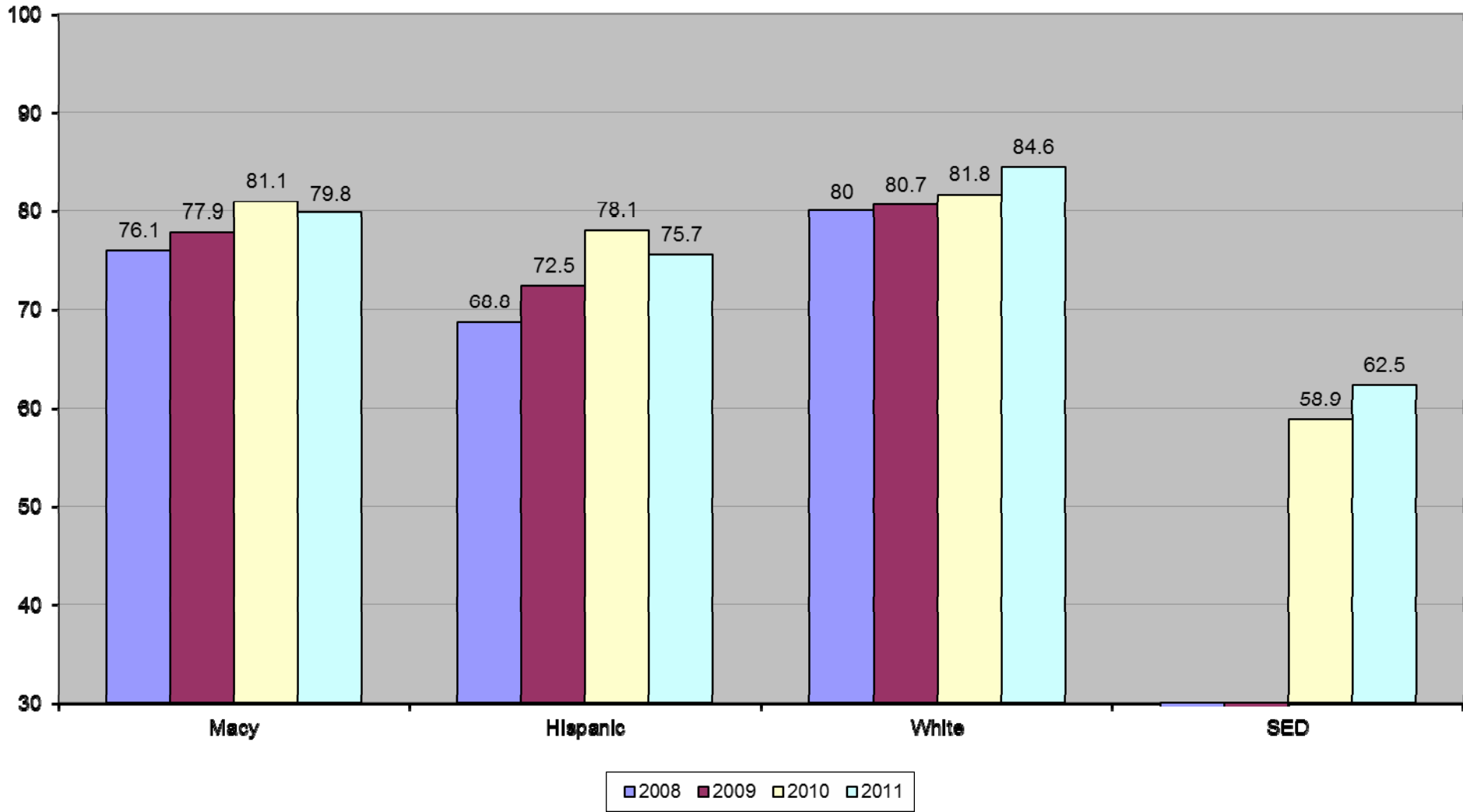
Jordan Elementary School AYP Percent Proficient Comparison 2008-2011 English-Language Arts



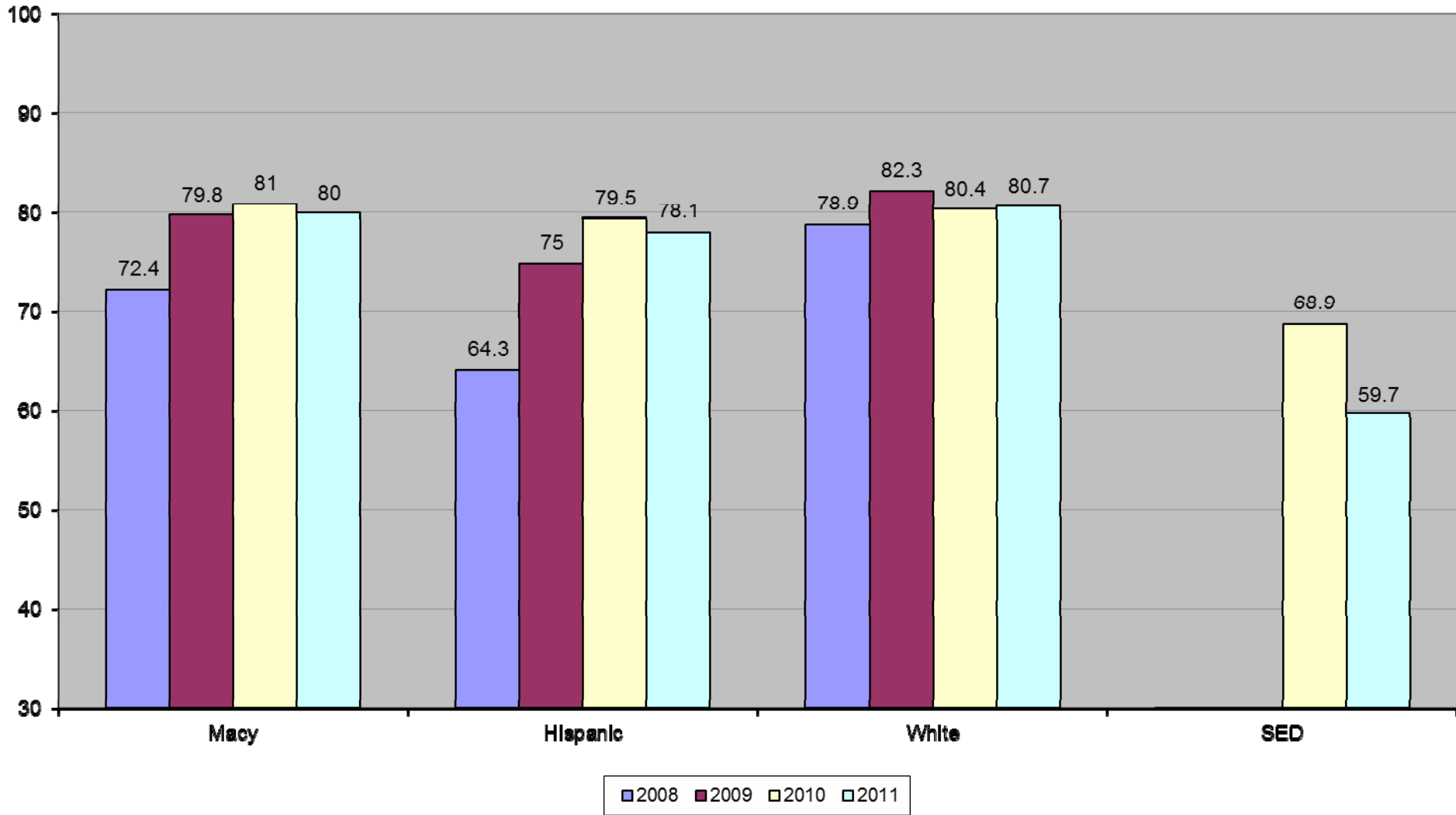
Jordan Elementary School AYP Percent Proficient Comparison 2008-2011 Mathematics



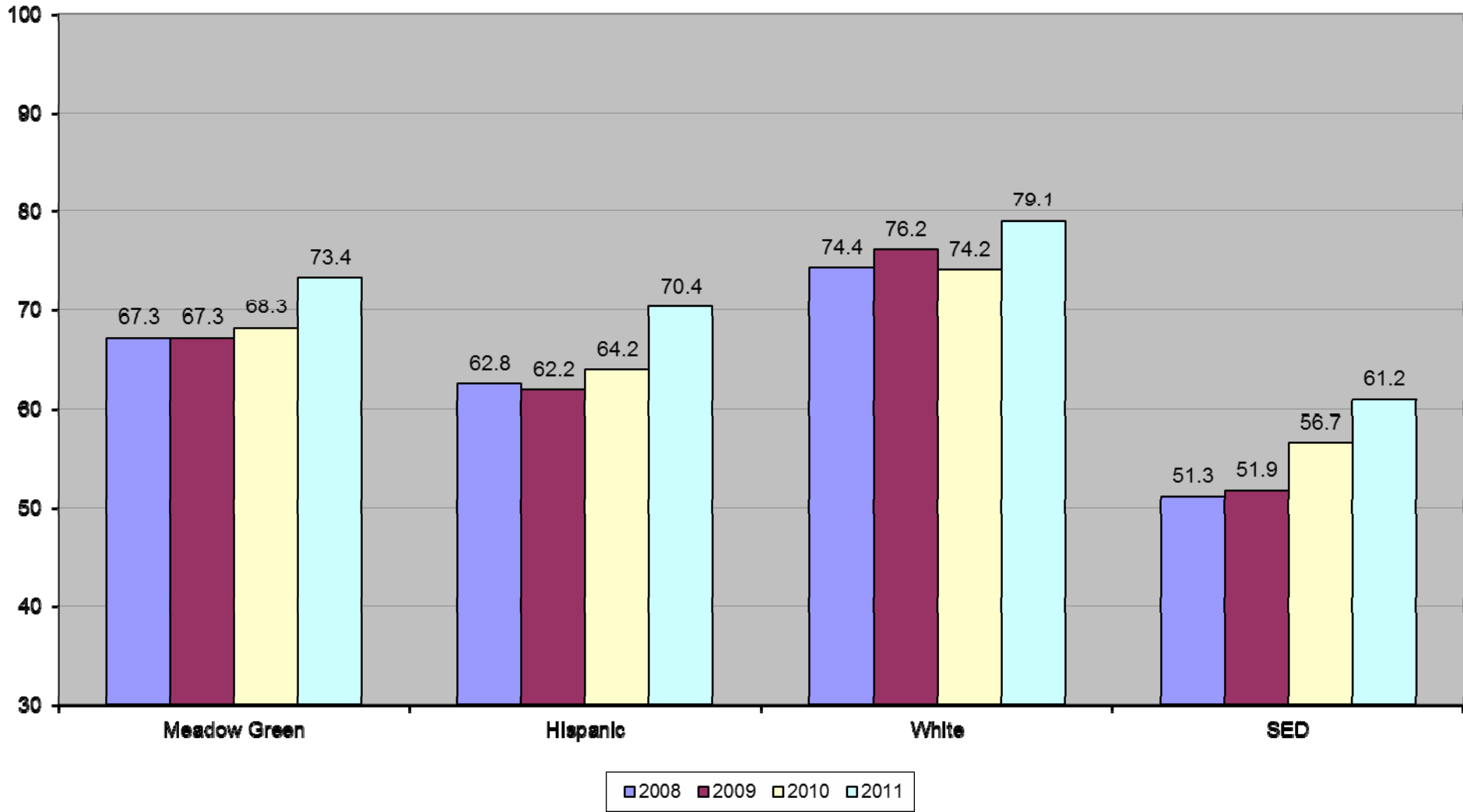
Macy Elementary School AYP Percent Proficient Comparison 2008-2011 English-Language Arts



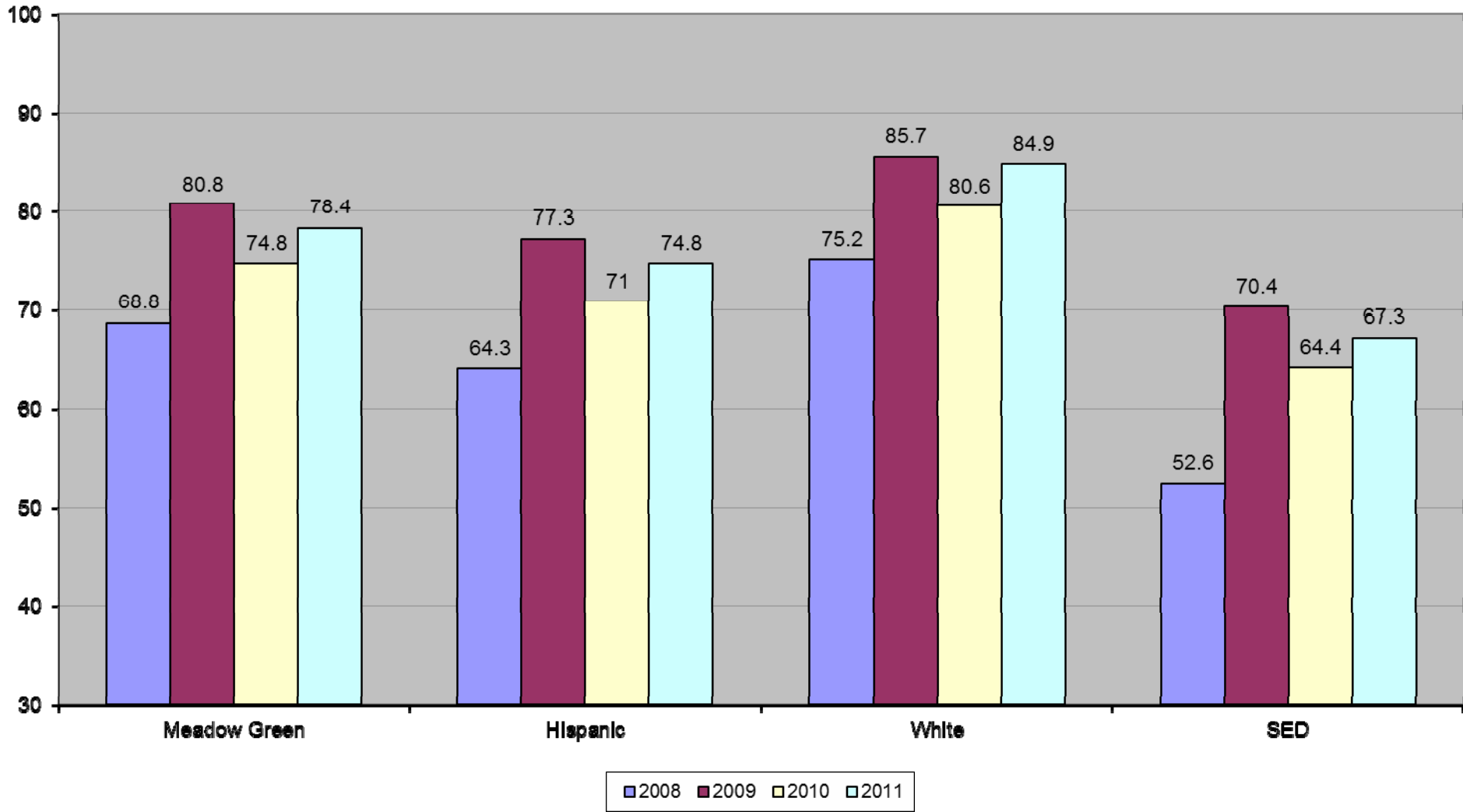
Macy Elementary School AYP Percent Proficient Comparison 2008-2011 Mathematics



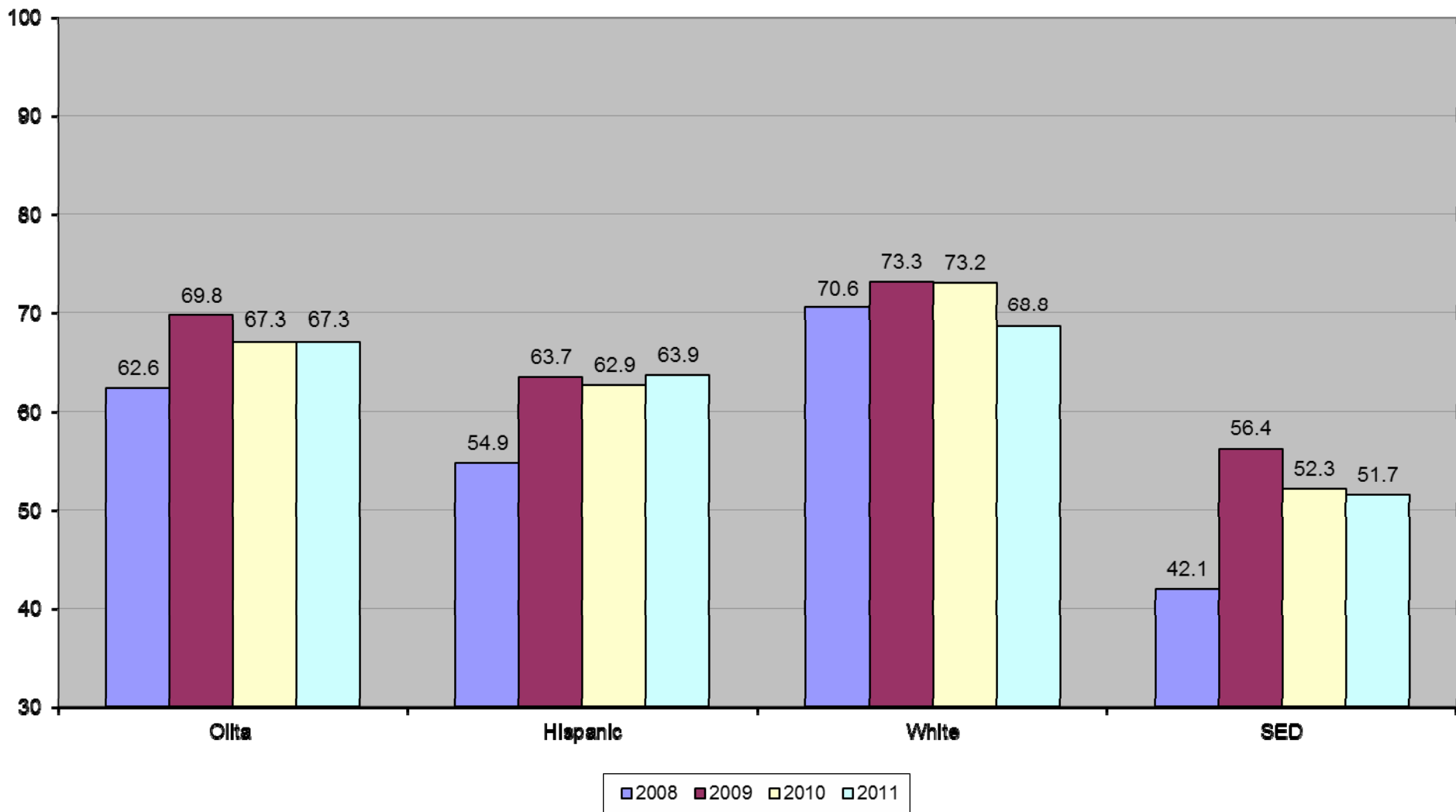
Meadow Green Elementary School AYP Percent Proficient Comparison 2008-2011 English-Language Arts



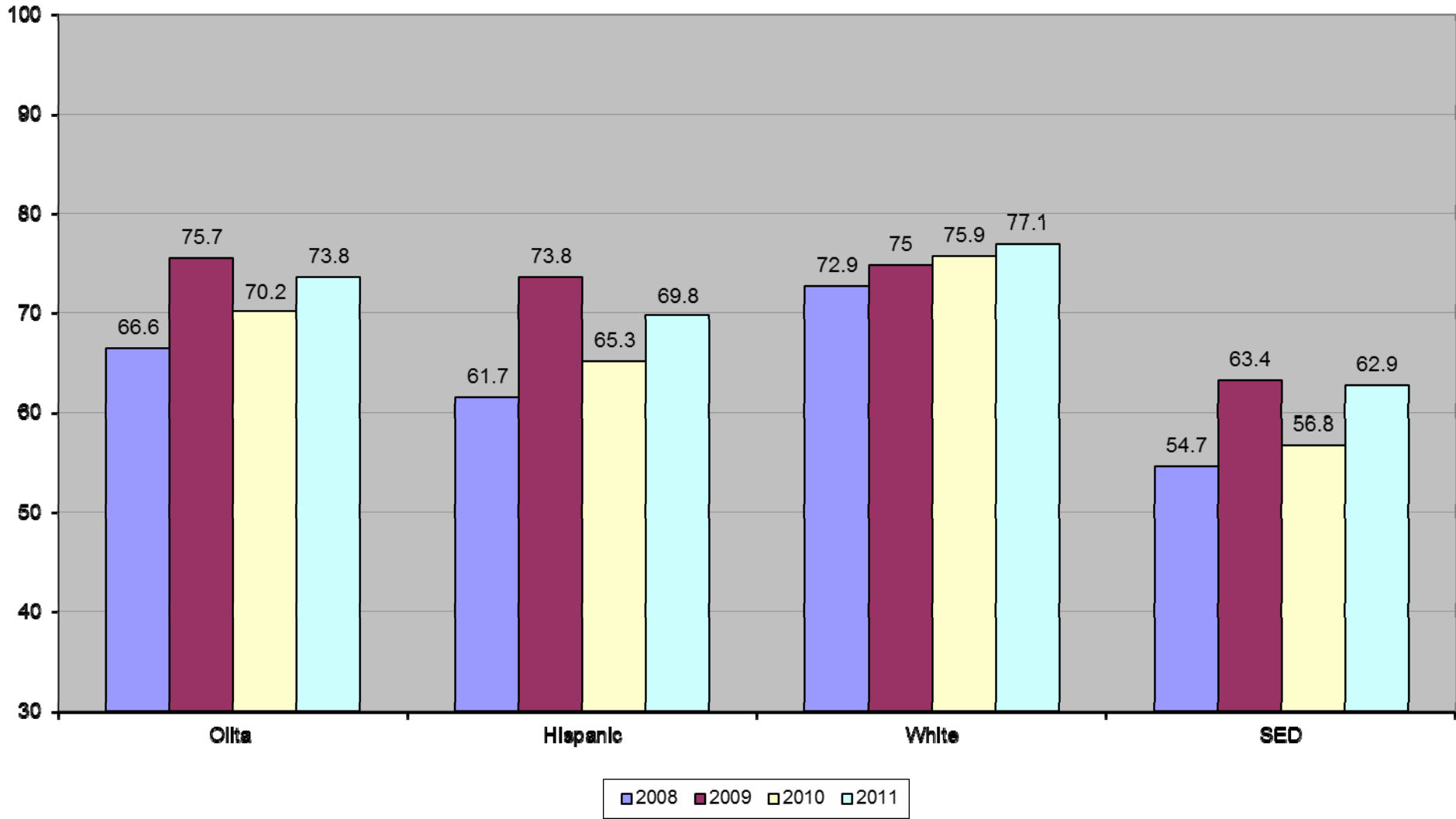
Meadow Green Elementary School AYP Percent Proficient Comparison 2008-2011 Mathematics



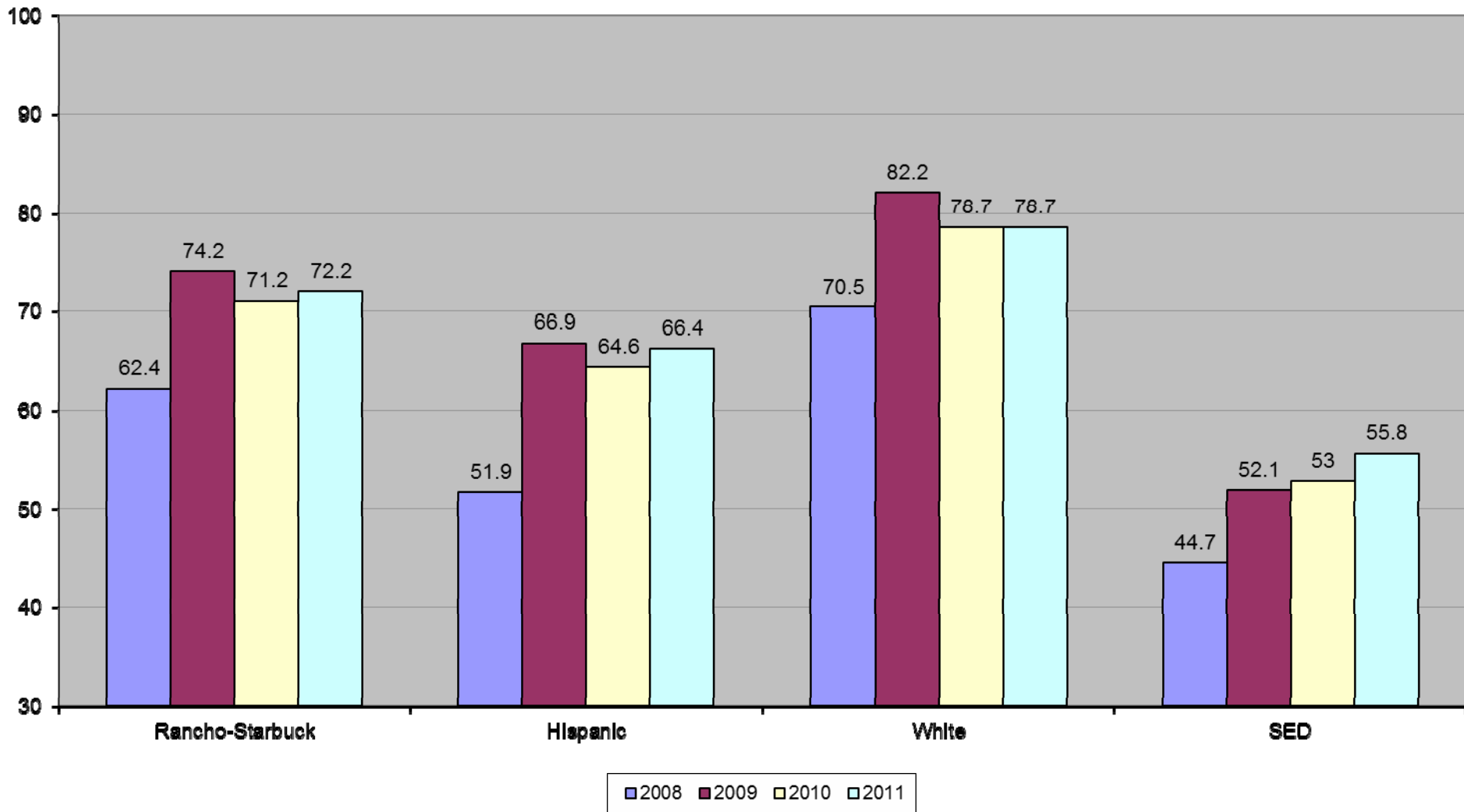
Olita Elementary School AYP Percent Proficient Comparison 2008-2011 English-Language Arts



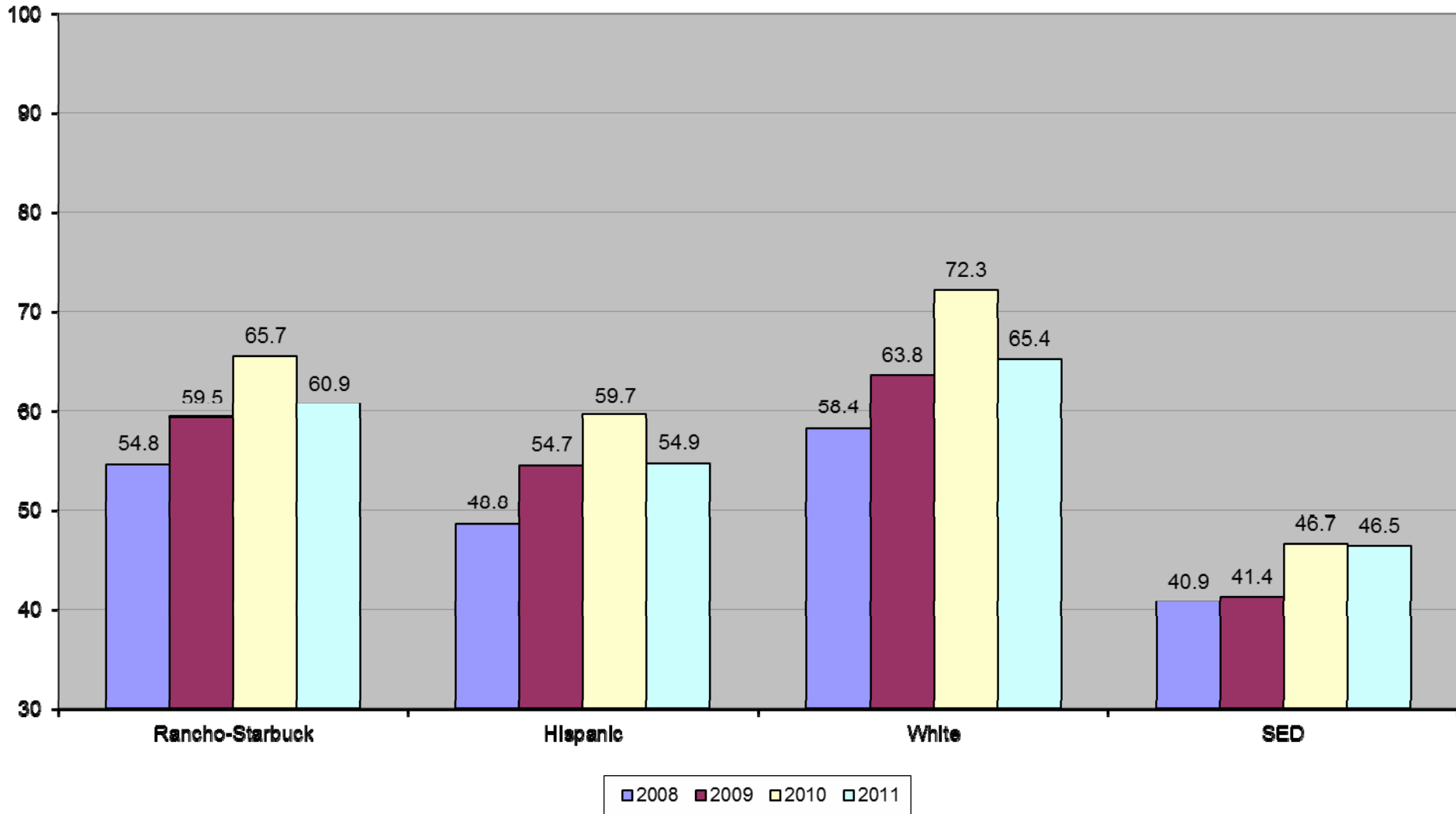
**Olta Elementary School
AYP Percent Proficient Comparison
2008-2011 Mathematics**



Rancho-Starbuck Intermediate School AYP Percent Proficient Comparison 2008-2011 English-Language Arts



**Rancho-Starbuck Intermediate School
AYP Percent Proficient Comparison
2008-2011 Mathematics**



Next Steps

- SMART goals for individual subgroups
- Target students based on academic need
- Frequent monitoring of student progress
- Instruction matching the way students learn
- Focus on becoming 'Great' and breaking through the plateau.

Questions?