

**Lowell Joint
School District**

2011 BASE API Report

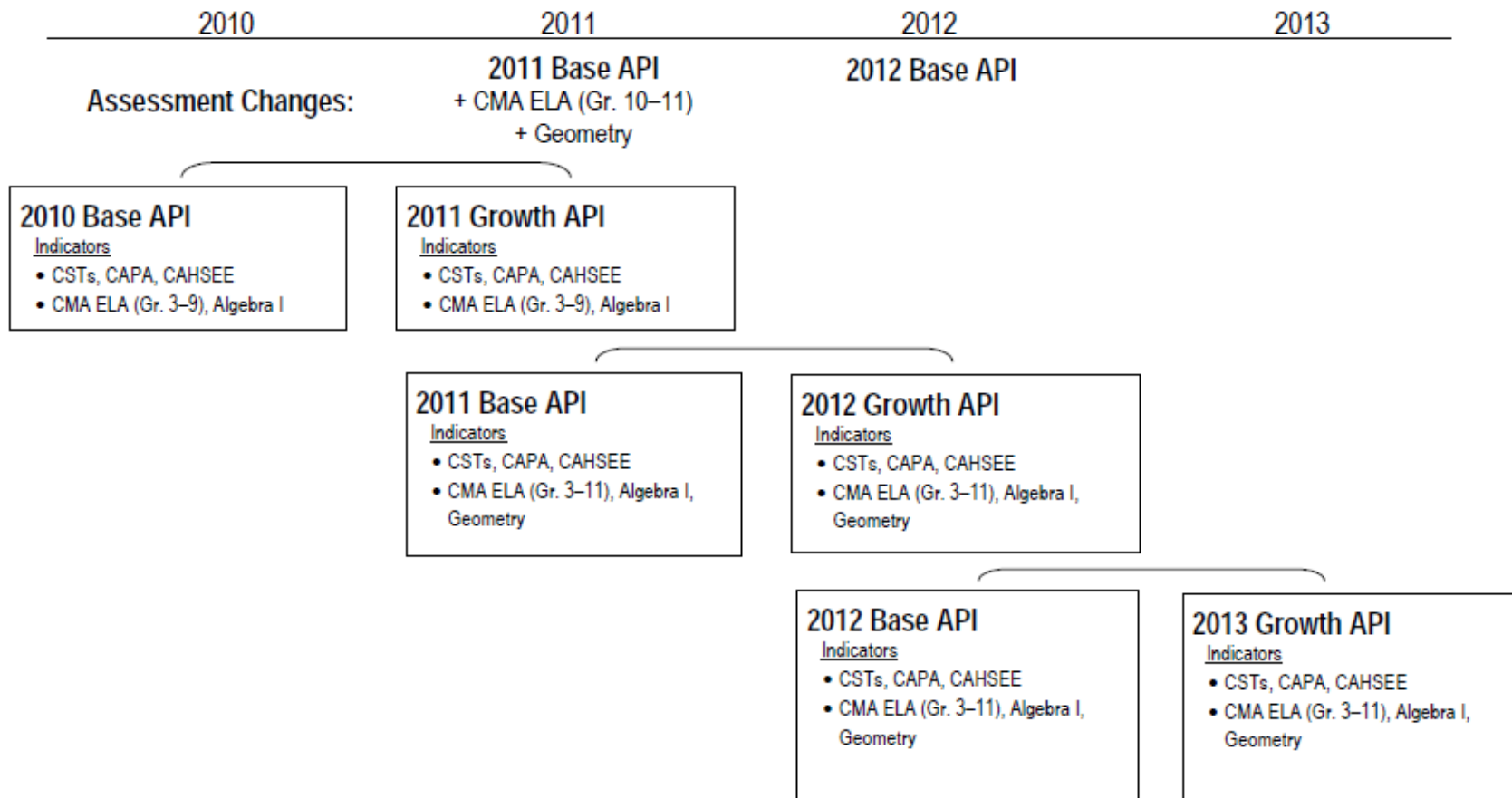
June 18, 2012

Base (API)

- Start of the Reporting Cycle.
- Based on results of 2011 STAR Testing.
- Will be compared to 2012 Growth API to determine growth for NCLB Accountability.
- Report includes statewide and similar school rankings.

Base and Growth API

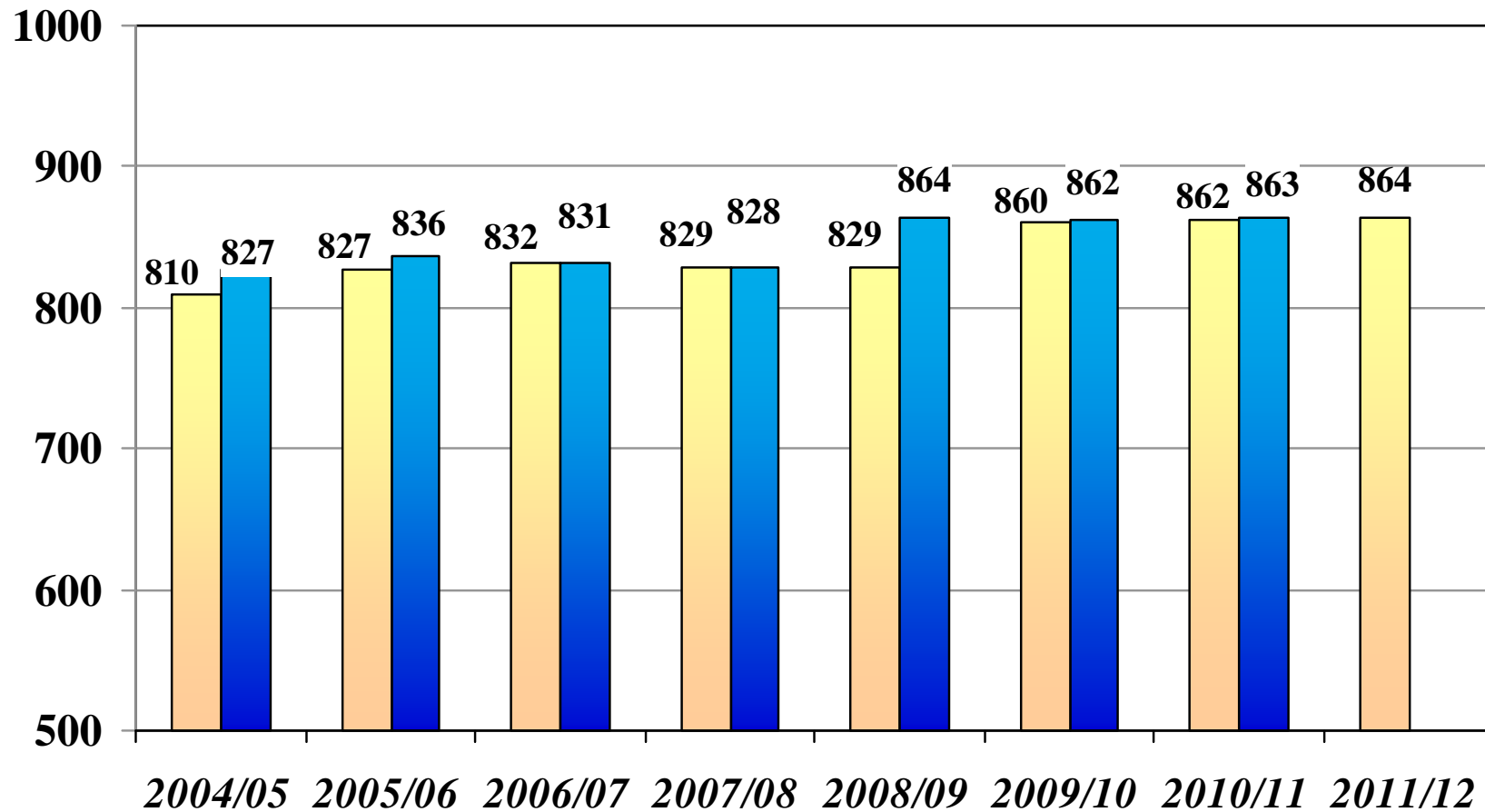
Two API Reports to Maintain Comparability and Allow Changes



Lowell Joint School District

Base/Growth Academic Performance Index Results

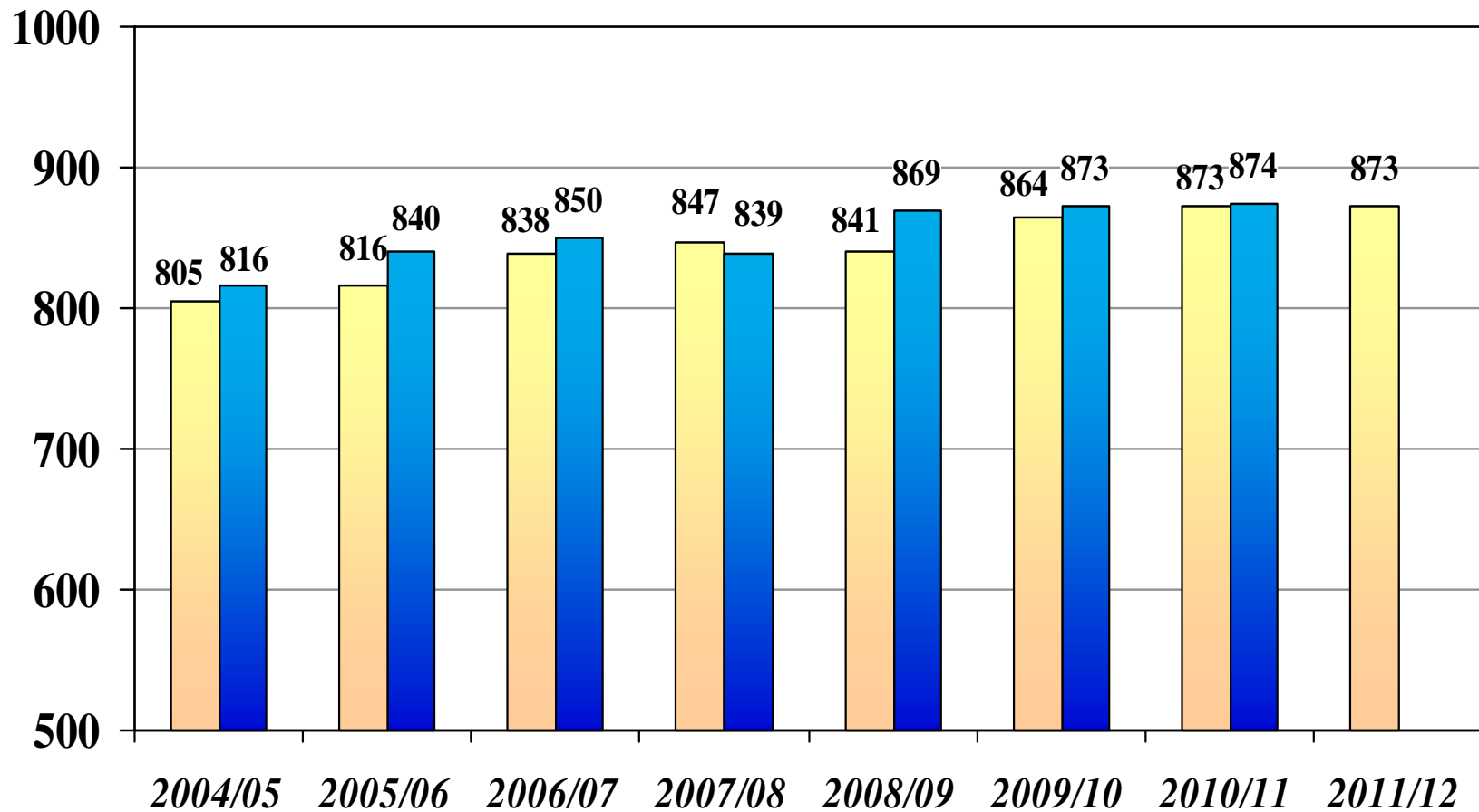
■ = Base
■ = Growth



El Portal Elementary School

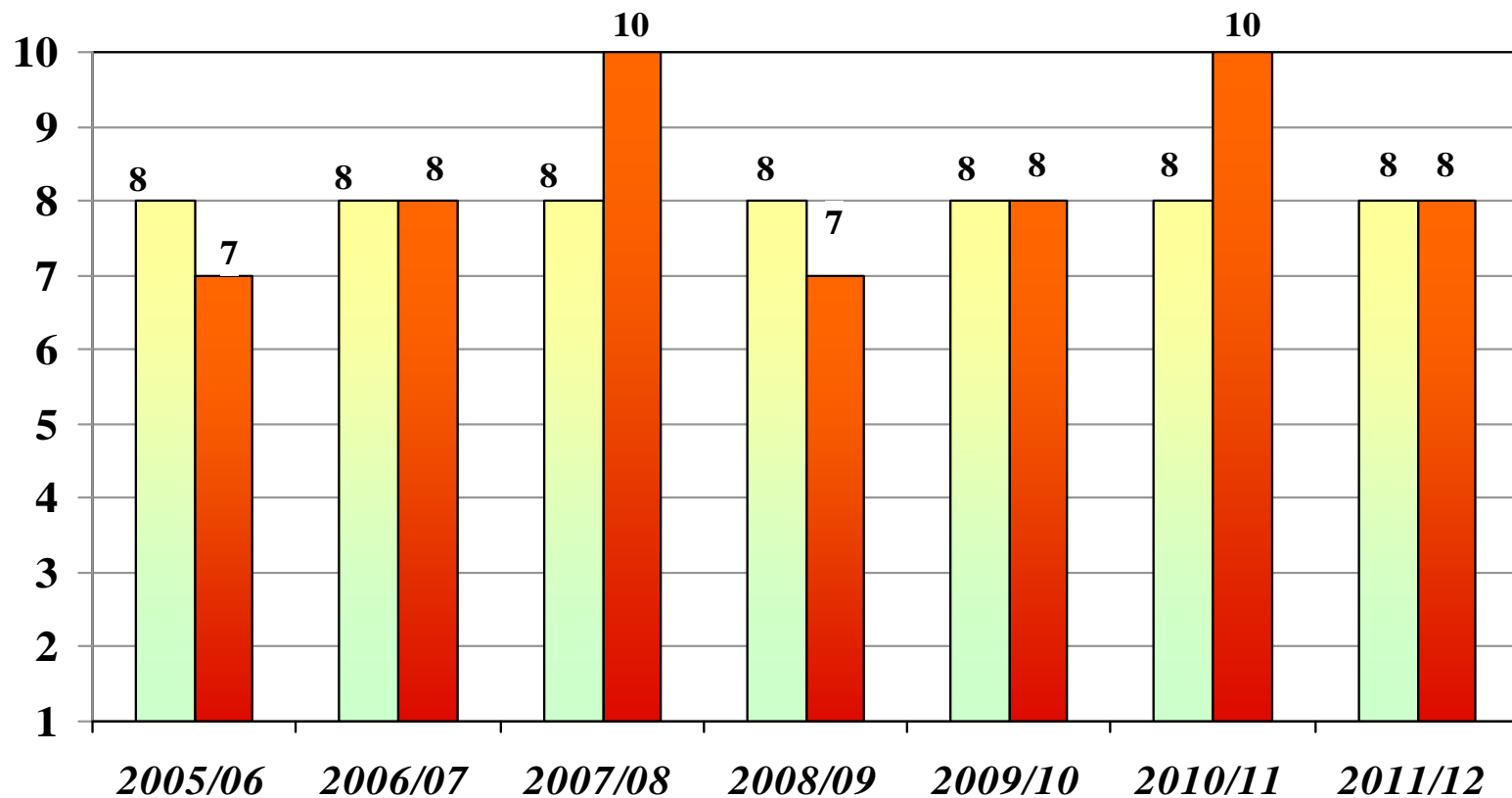
Base/Growth Academic Performance Index Results

■ = Base
■ = Growth



El Portal Elementary School RANKINGS

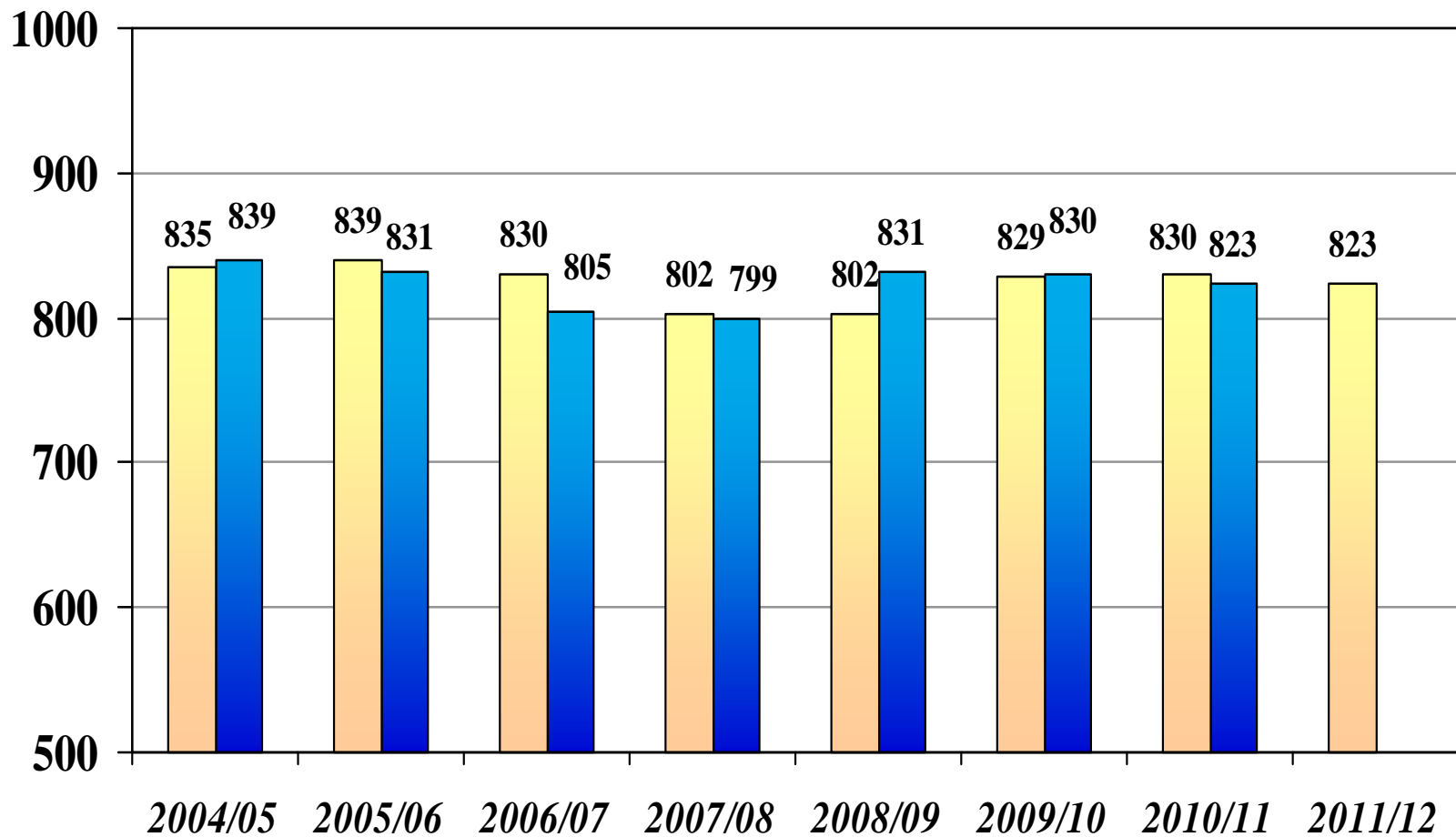
■ = Statewide
■ = Similar Schools



Jordan Elementary School

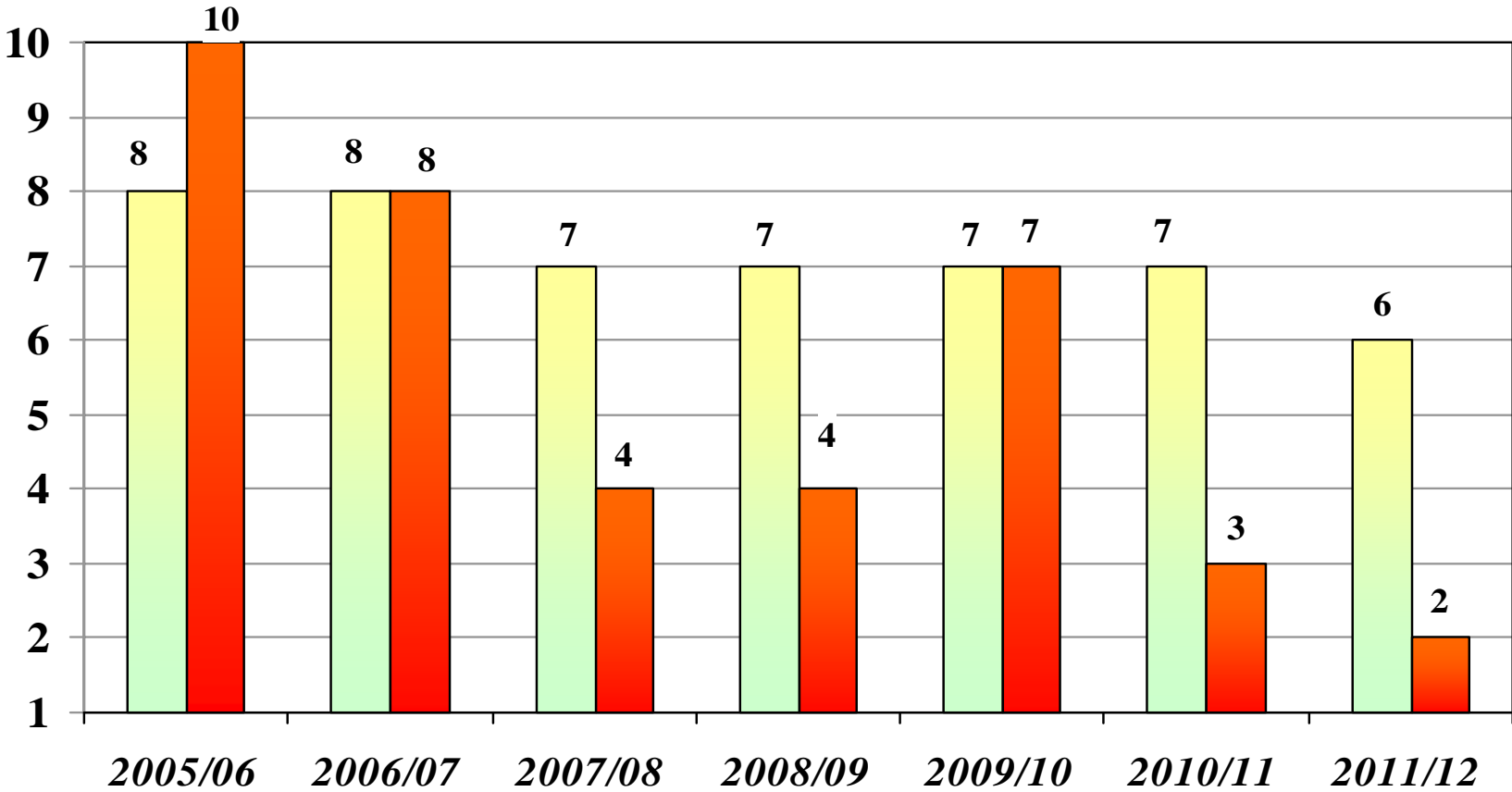
Base/Growth Academic Performance Index Results

■ = Base
■ = Growth



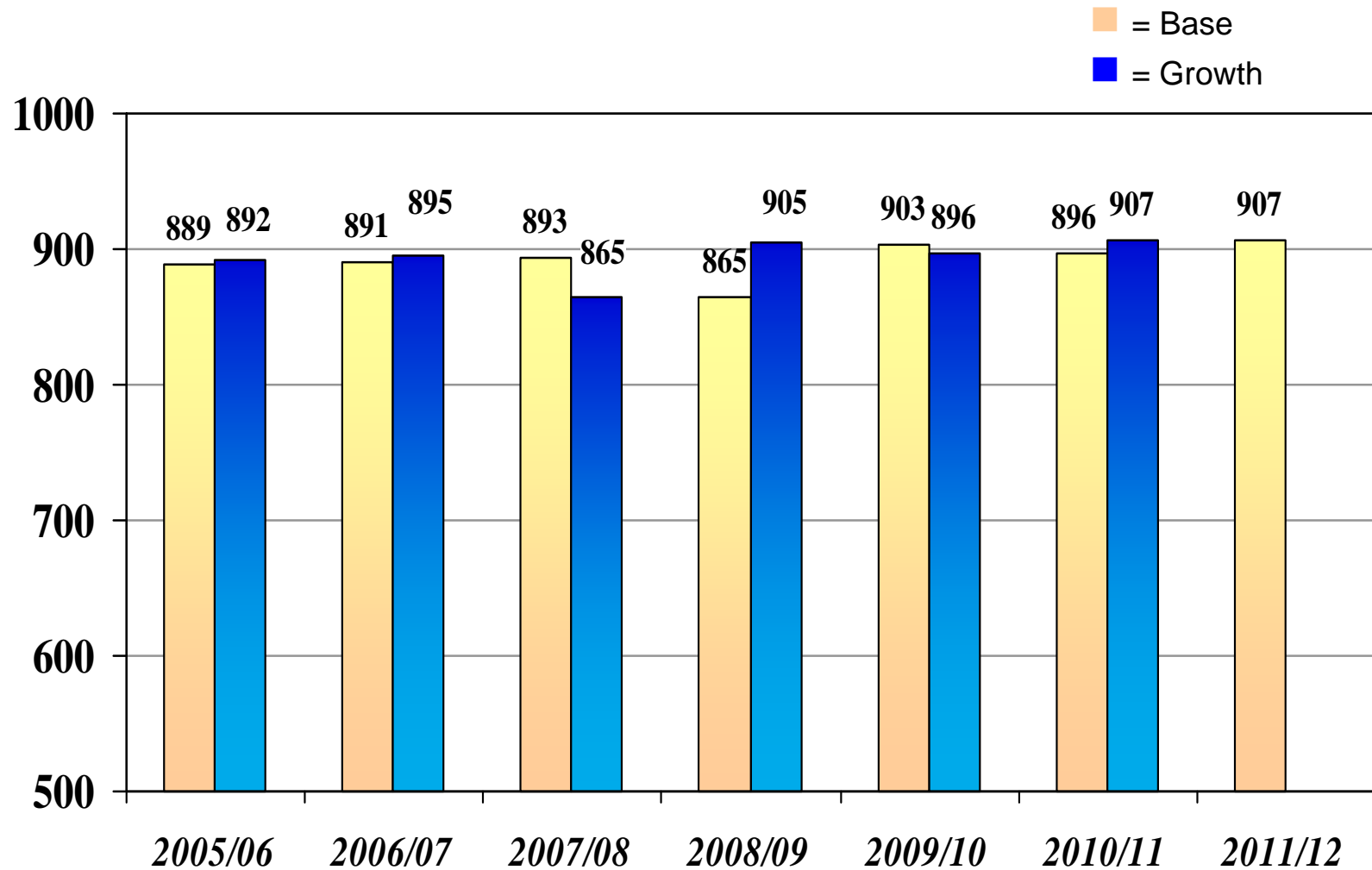
Jordan Elementary School RANKINGS

■ = Statewide
■ = Similar Schools



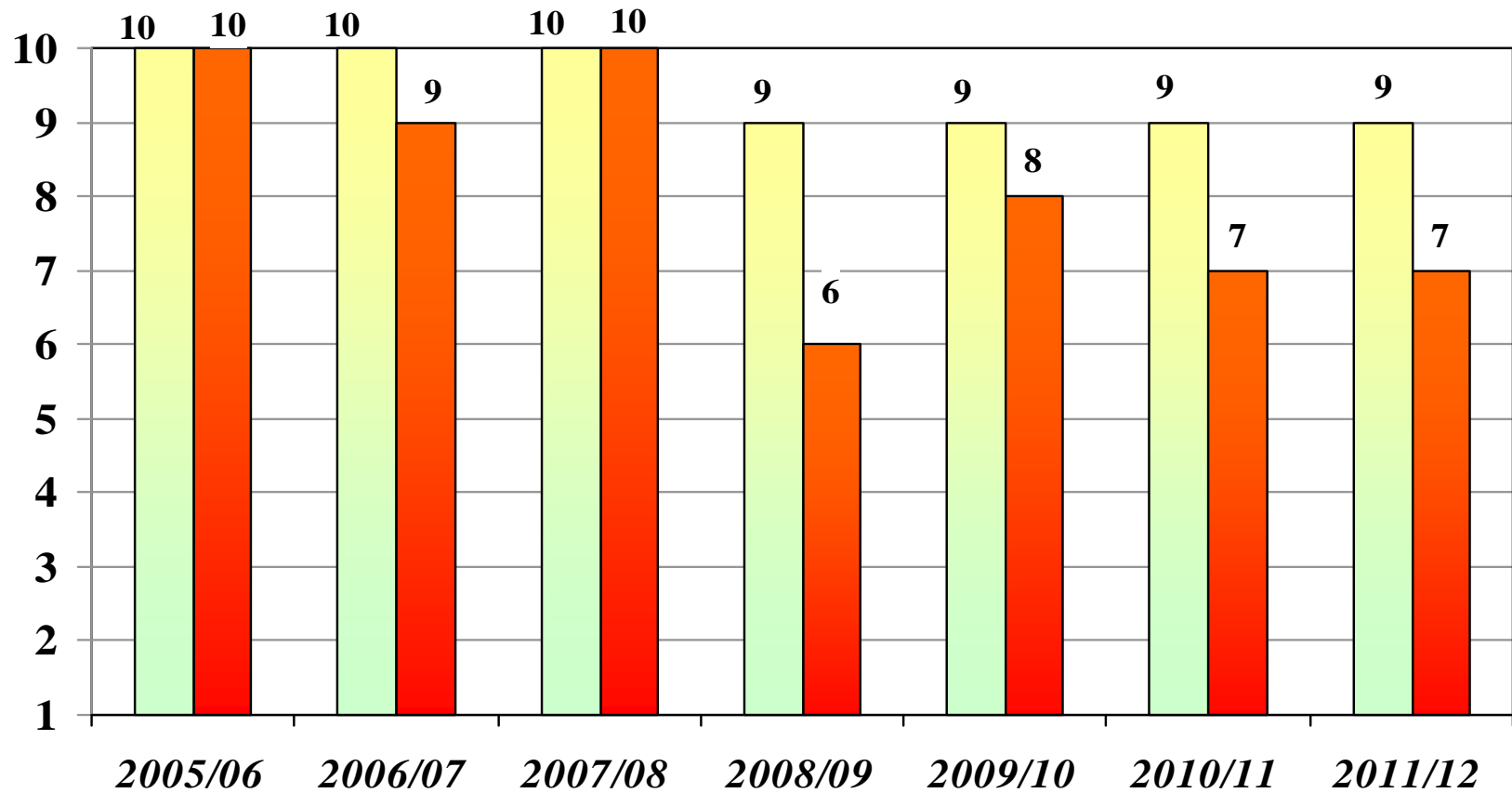
Macy Elementary School

Base/Growth Academic Performance Index Results



Macy Elementary School RANKINGS

■ = Statewide
■ = Similar Schools

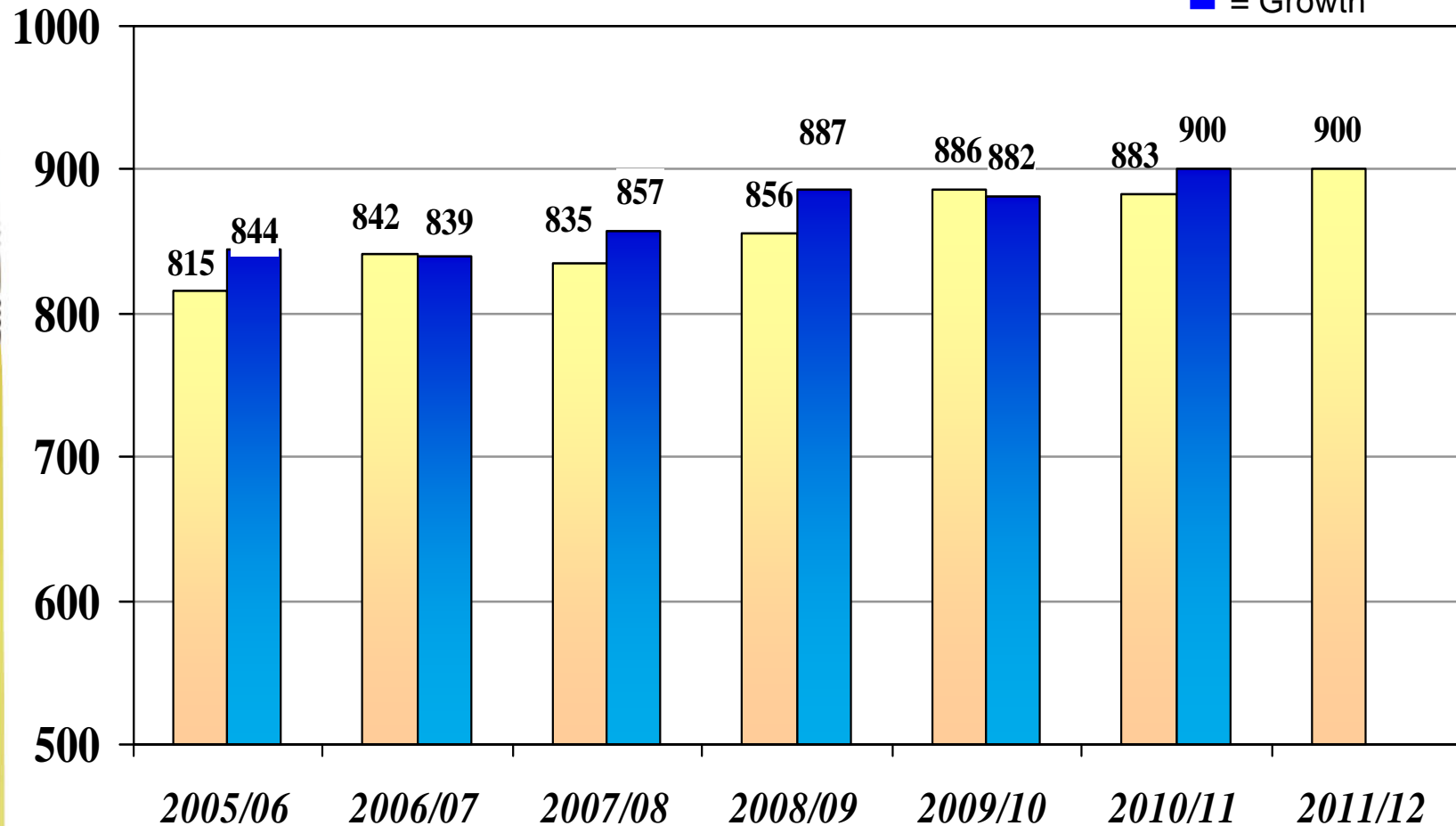


Meadow Green Elementary School

Base/Growth Academic Performance Index Results

■ = Base

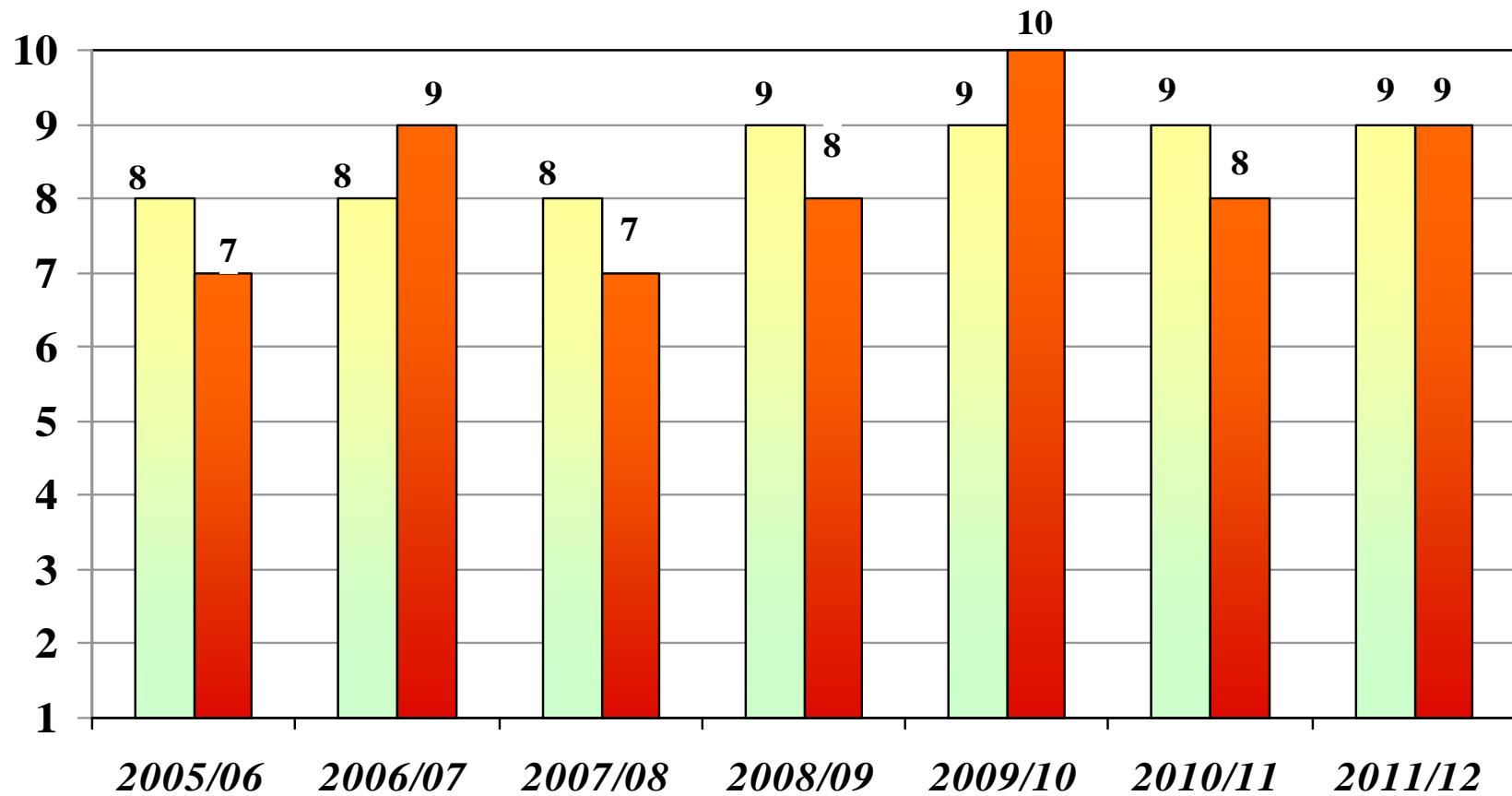
■ = Growth



Meadow Green Elementary School

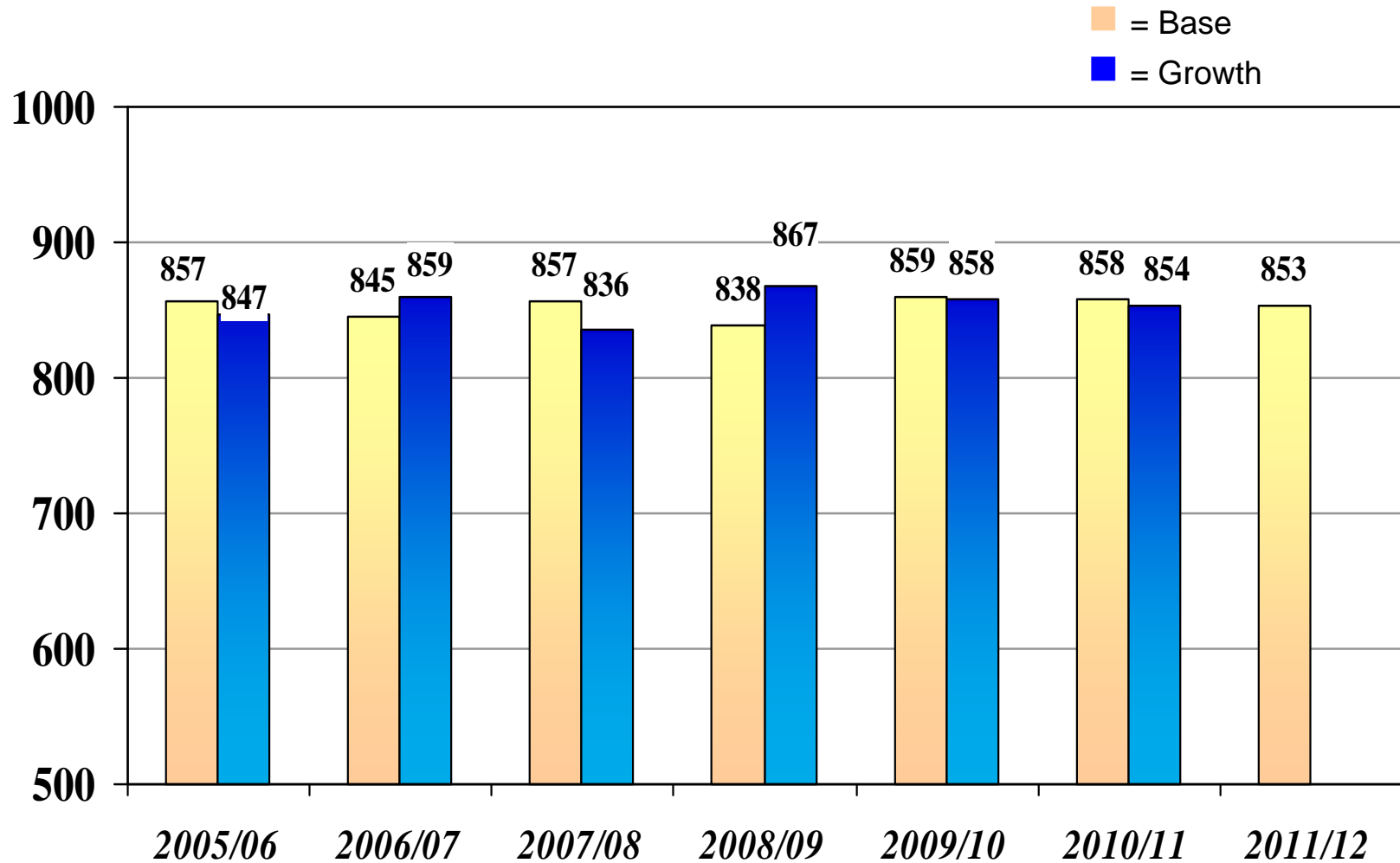
RANKINGS

■ = Statewide
■ = Similar Schools



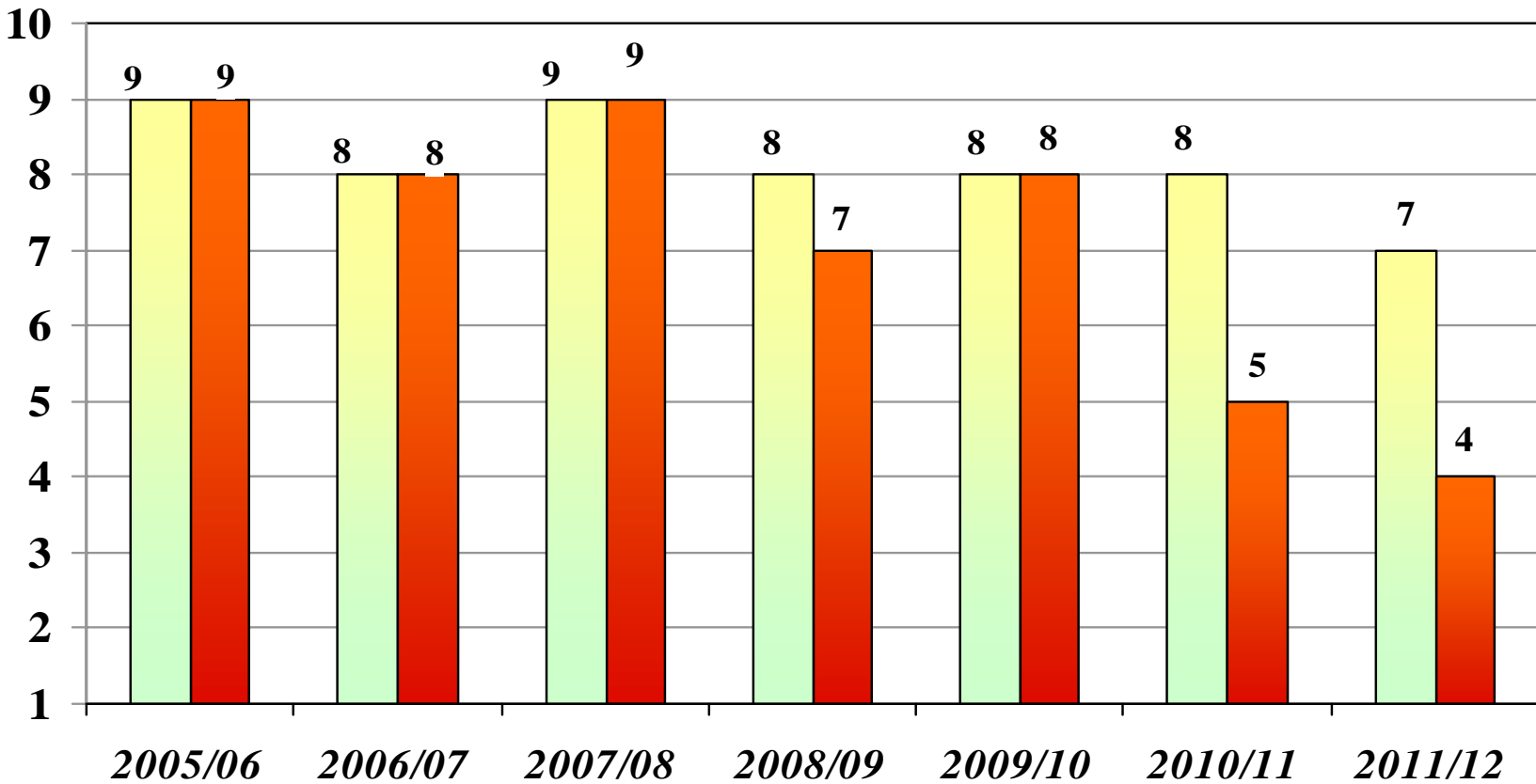
Olita Elementary School

Base/Growth Academic Performance Index Results



Olita Elementary School RANKINGS

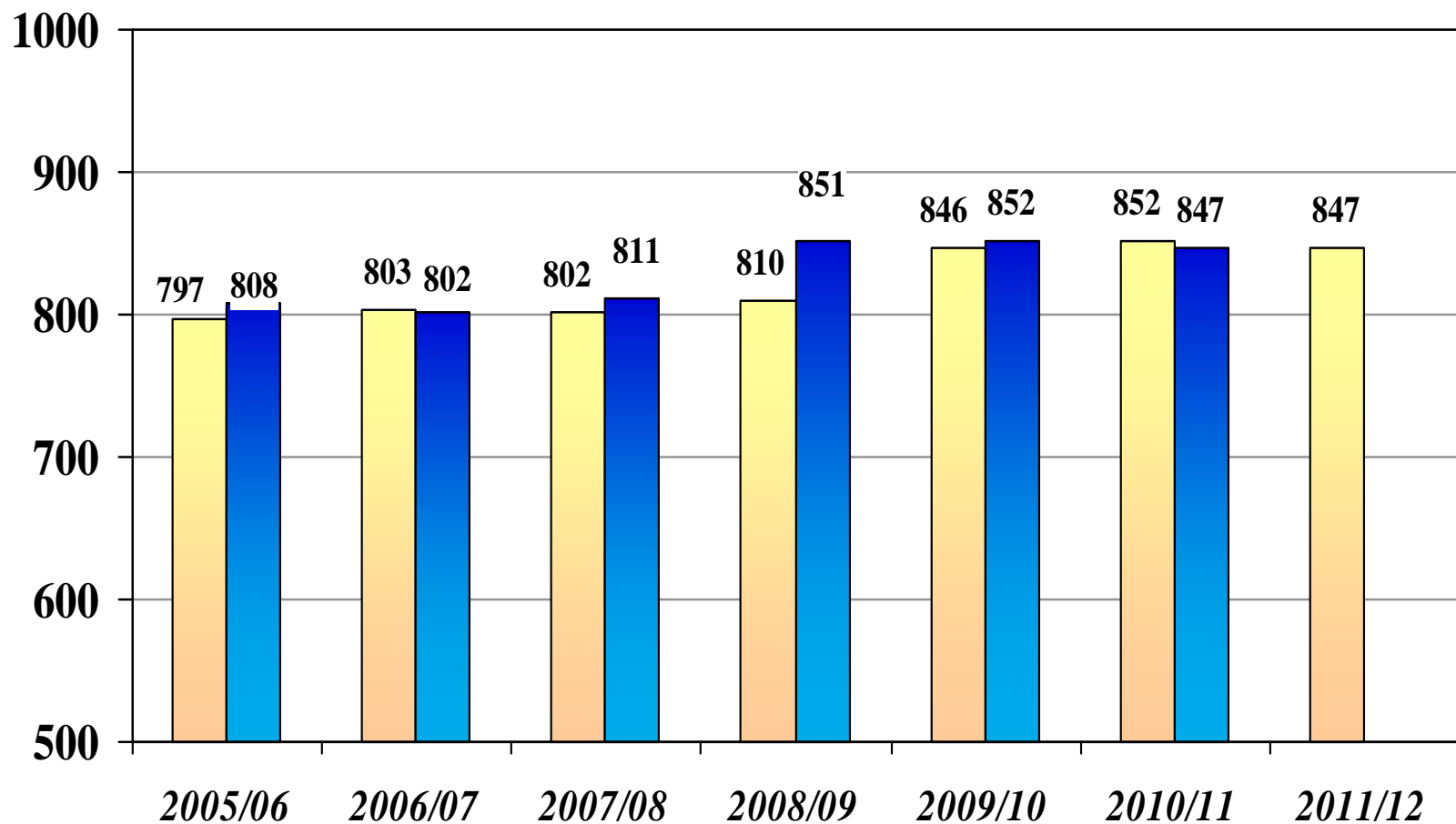
■ = Statewide
■ = Similar Schools



Rancho-Starbuck Junior High School

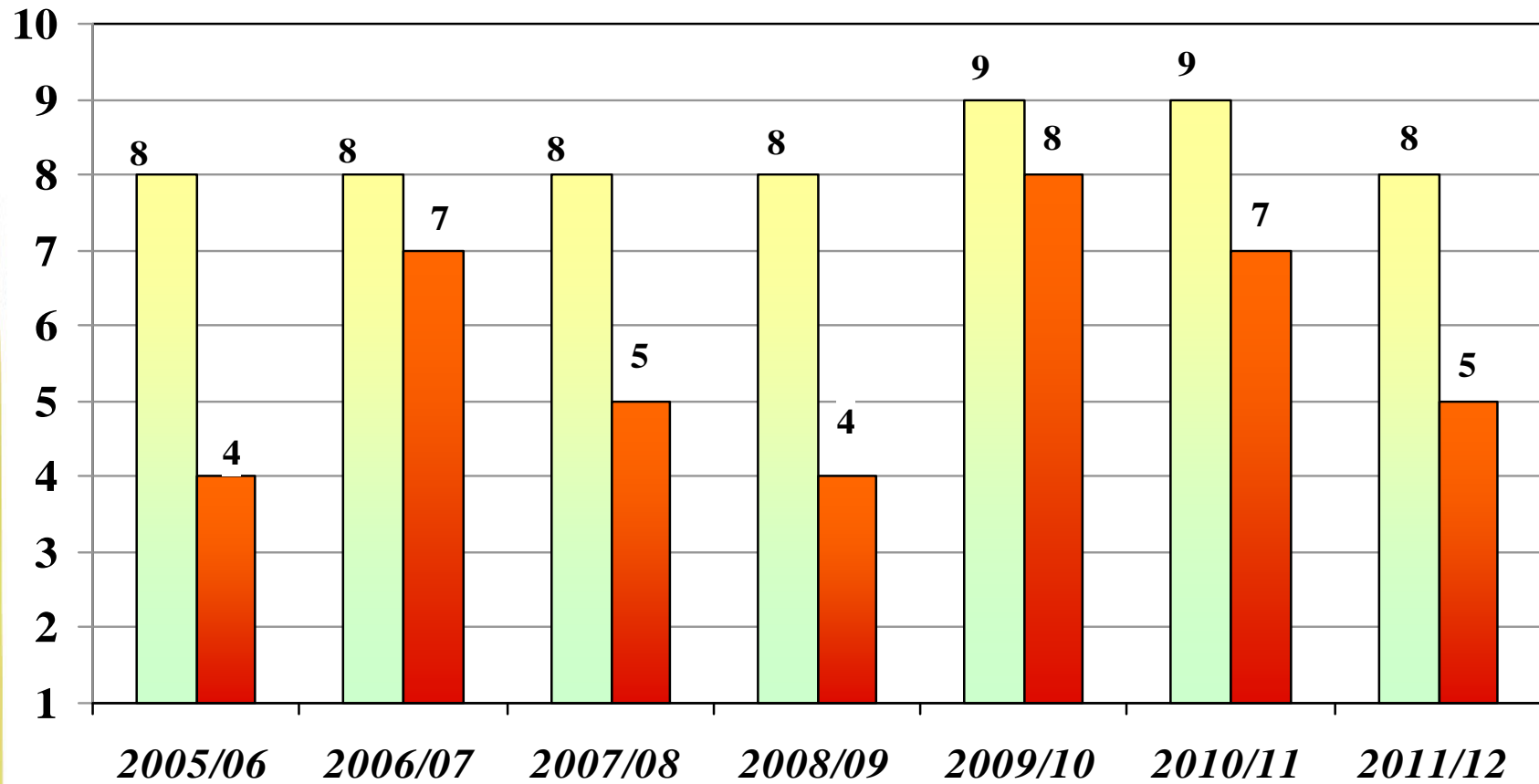
Base/Growth Academic Performance Index Results

■ = Base
■ = Growth



Rancho-Starbuck Junior High School RANKINGS

■ = Statewide
■ = Similar Schools



2011/12 API

School Content Area Weights

Content Areas	K-5	6-8
English-Language Arts	56.5%	51.4%
Mathematics	37.6%	34.3%
Science	5.9%	7.1%
History-Social Science	N/A	7.1%





Lowell Joint School District

Next Steps for Success:

- ✓ Continue to monitor student learning
- ✓ Continue to provide targeted interventions
- ✓ Evaluate 2012 STAR data when available
- ✓ Create SMART Goals for 2012/13 based on results

Board Member Questions

