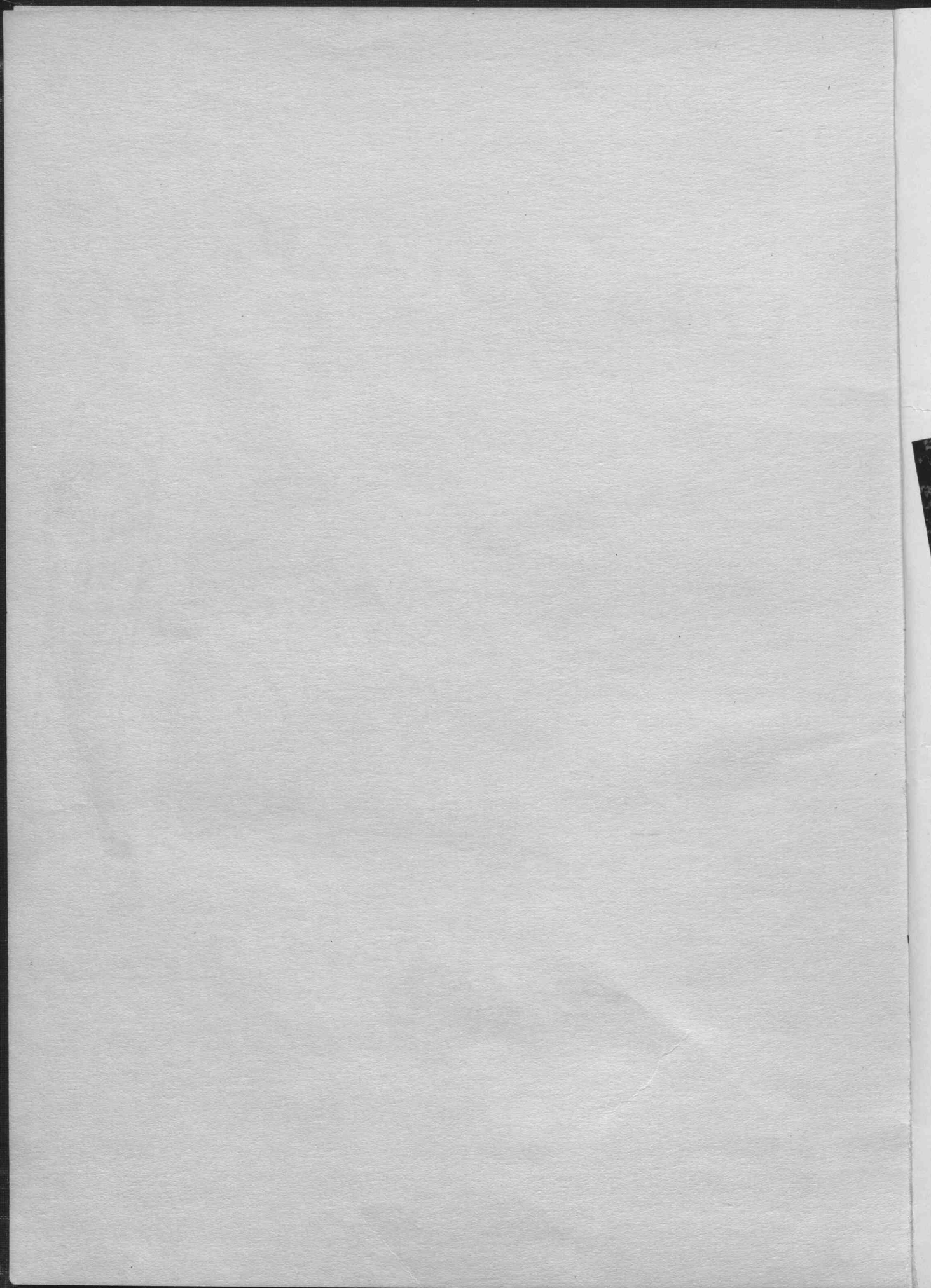


7240

North Cache High School Library

Bruce P. Stokes

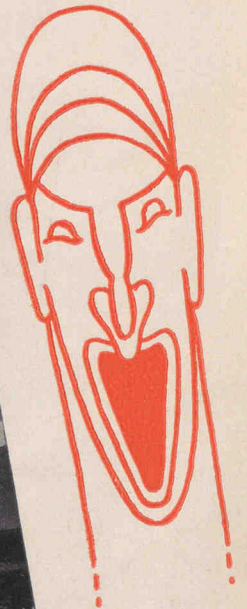
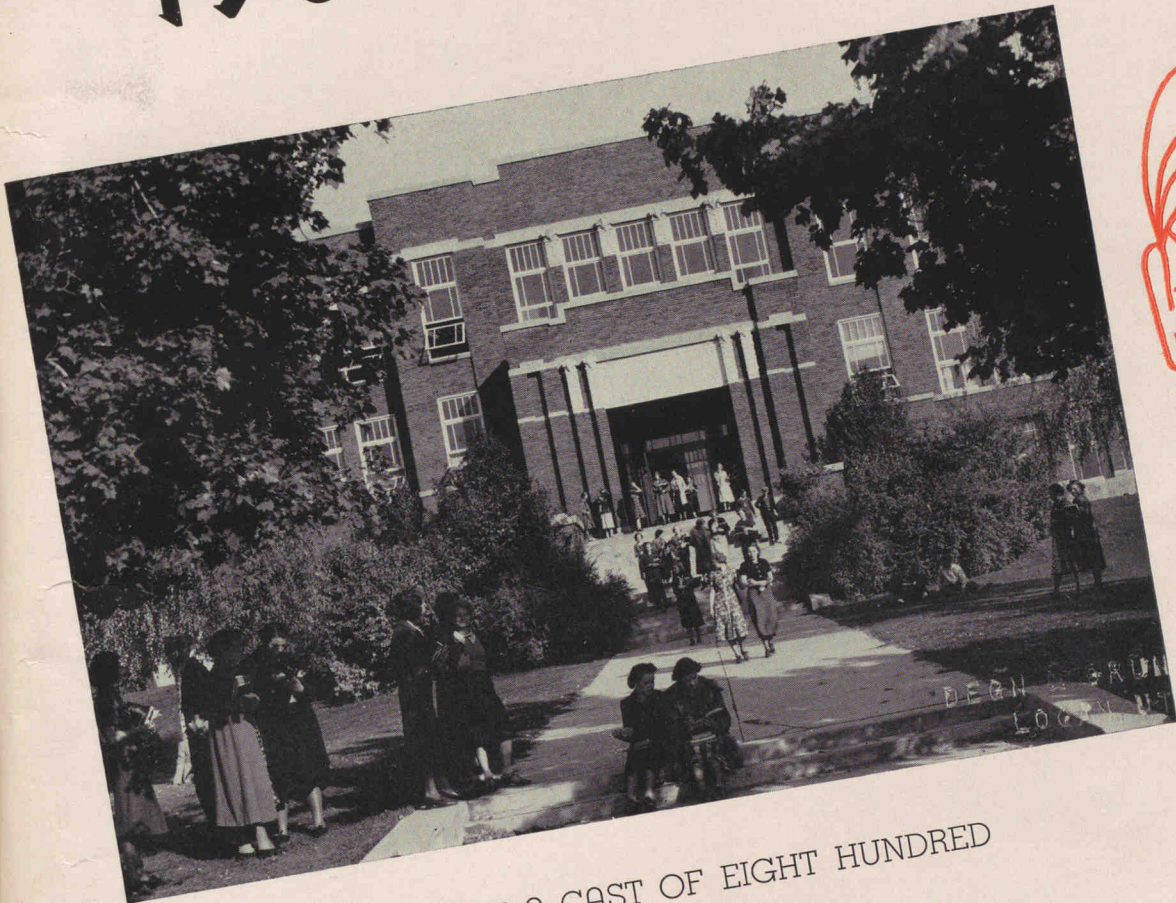
1959



PRESENTING

THE

1938 POLARIS



WITH A CAST OF EIGHT HUNDRED

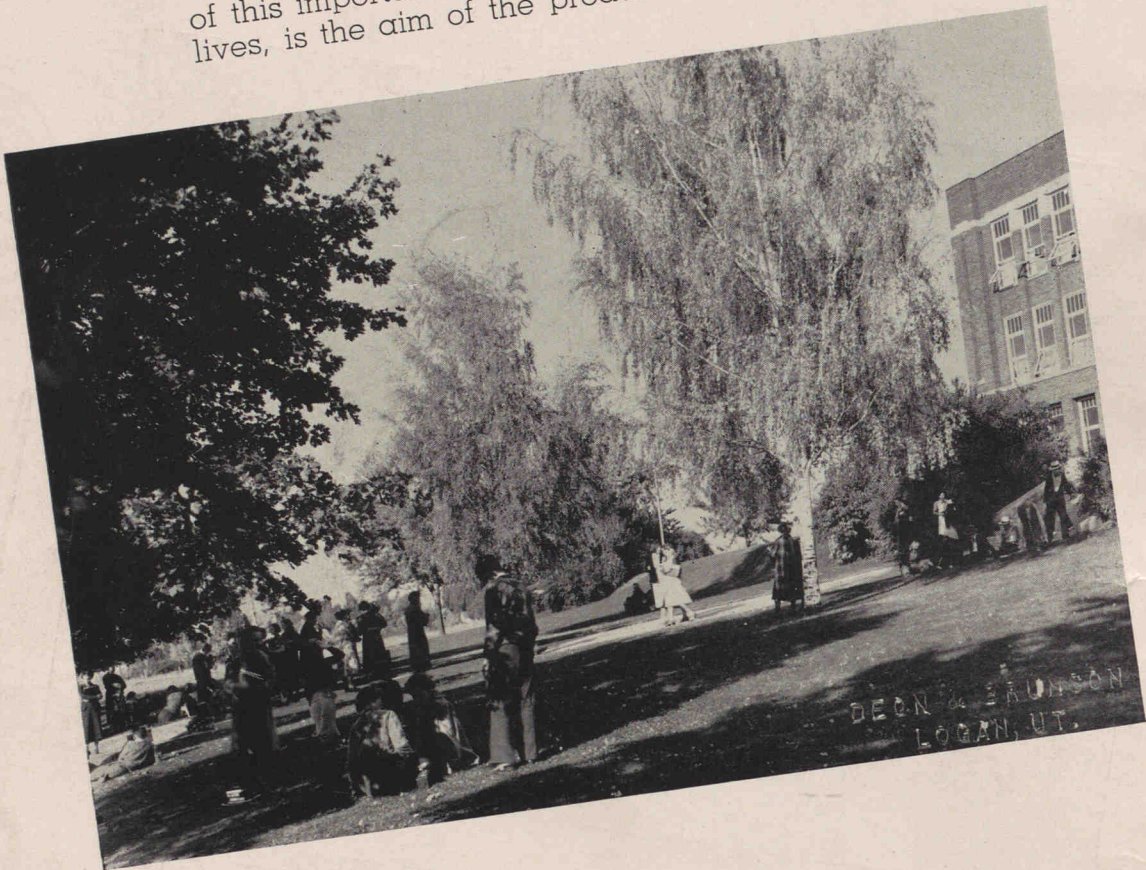
which had a successful
run for thirty-six weeks

at

NORTH CACHE HIGH
Richmond, Utah

FOREWORD

To leave with you a complete picture of this important act in the drama of our lives, is the aim of the producers.



BETH EMMETT, Producer

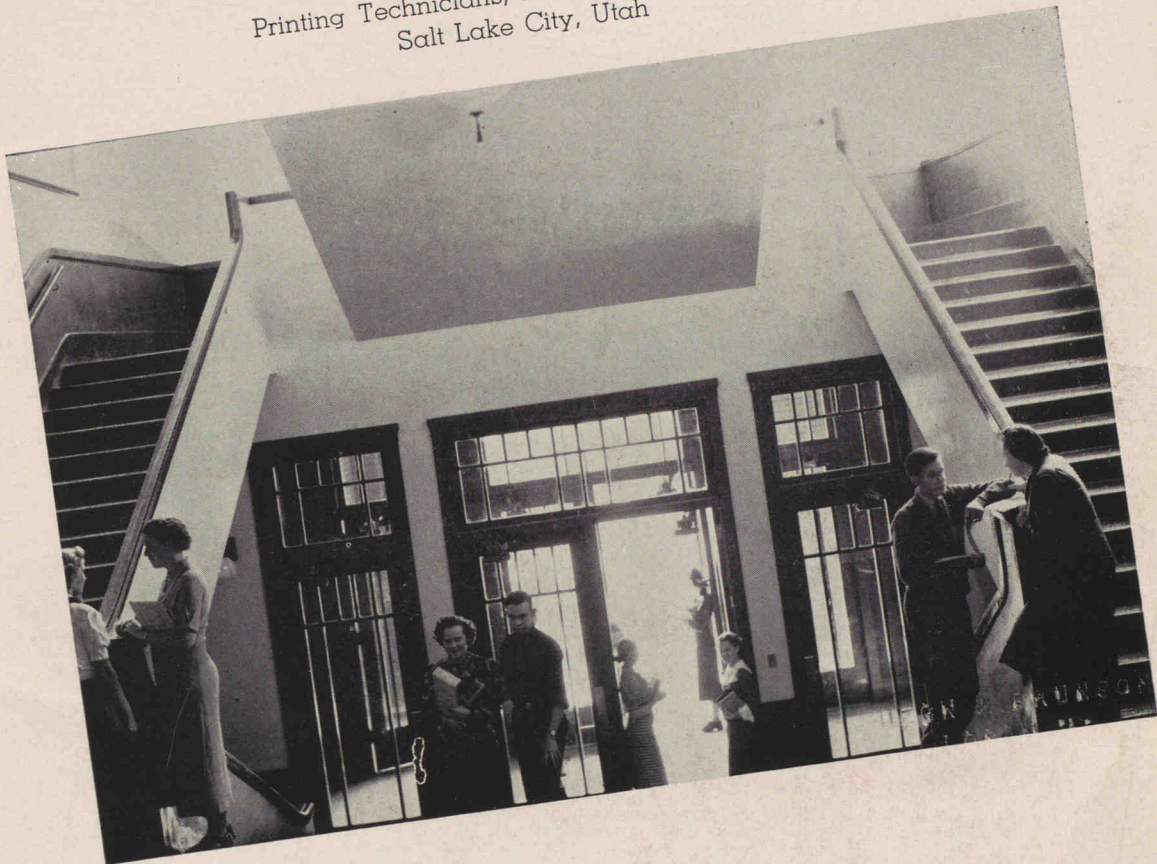
DOROTHY JORGENSEN, Associate Producer

VIVA HANSEN, Prologue Typist

GERTRUDE BENTLEY, Supervising Director

Photography, Degn and Brunson, Logan, Utah

LYLE COOLEY, Manager
FERRIS HILLYARD, Associate Manager
RUTH HYER, Associate Manager
W. W. PERKINS, Supervising Director
Printing Technicians, Paragon Printing Co.,
Salt Lake City, Utah



DEDICATION

"All the world's a stage"—and so it is
to the future success of the stars in this
show that we dedicate the 1938 Polaris.

THE 1938 POLARIS

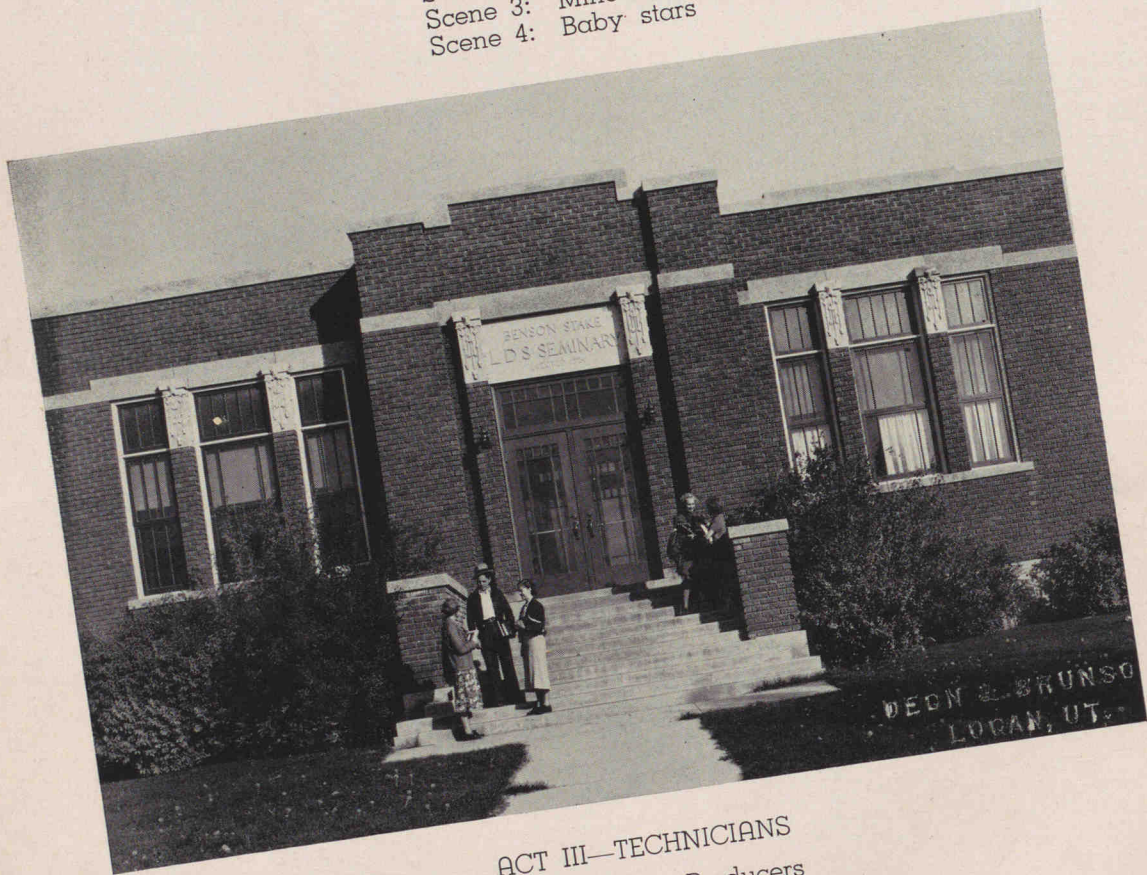
A true life drama in four acts

ACT I—CONTROLLERS

- Scene 1: Administrative directors
- Scene 2: Associate directors
- Scene 3: Leading characters

ACT II—THE CAST

- Scene 1: Stars
- Scene 2: Tomorrow's stars
- Scene 3: Minors
- Scene 4: Baby stars



ACT III—TECHNICIANS

- Scene 1: Producers
- Scene 2: Publications
- Scene 3: Social directors
- Scene 4: Special technical fields

ACT IV—HE-MAN HIGHLIGHTS

- Scene 1: Directors and commentators
- Scene 2: Football
- Scene 3: Basketball
- Scene 4: Tennis and Track

ACT ONE

ACT ONE



CONTROLLERS



SCENES

SUPERINTENDENT - PRINCIPAL
FACULTY
LEADS



ADMINISTRATION



J. W. KIRKBRIDE
Superintendent

A loyal friend, and champion for education. A capable tactful man, with a smile for everyone.



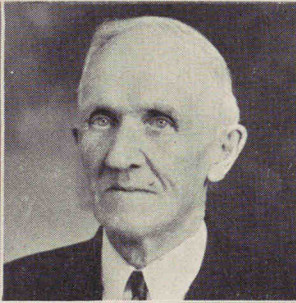
C. I. STODDARD
Principal

The busiest man to be found, yet has time to give good sound advice to all.

SCHOOL BOARD



ALBERT McCANN



C. F. OLSEN
President



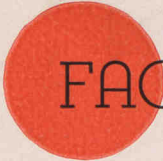
L. H. ALLEN



JOHN J. HENDRY



W. J. LOOSLE



FACULTY

A. W. BAIR, Agriculture
 GERTRUDE BENTLEY, Commerce
 M. R. COOLEY, Mathematics
 C. A. HURREN, Civics

C. B. JOHNSON, History
 ANN LARSEN, Foods
 ARTA LARSEN, Textiles and Household Arts
 ELSIE LEWIS, Secretary

THEOLA MERRILL, Textiles
 E. B. OLESEN, History
 EDNA PEDERSEN, Commerce, English
 W. W. PERKINS, English

JOHN H. PETERSON, Civics, Botany
 J. W. PULSIPHER, Music
 FRANK RAYMOND, English
 ALDA REES, Physical Education

L. C. SMITH, Biology, Botany
 EVELYN SMYTH, History, Accounting
 L. D. SPENCER, Chemistry, German
 CAMILLA SPILLMAN, Speech, English

C. B. STODDARD, English
 ALEDA TINGEY, Library, English
 E. M. VAN ORDEN, Mathematics, Physics
 H. M. WADSWORTH, Metal Shop

HEBER WHITING, Physiology, Football Coach
 JAY WHITMAN, Phy. Educ., Basketball Coach
 JOHN L. PETERSON (Not Pictured)



LEADS



**STUDENT BODY
OFFICERS**

Glen Larsen, Faye Reese,
and Athalie Howell, we salute
you. For though some more
famed theatre calls you to play
a greater roll, to this cast of
1937-38, your memory will for-
ever live in their hearts, for the
critics are agreed, "You played
your parts well."

ACT TWO

ACT TWO



CLASSES



SCENES

SENIORS — STARS

JUNIORS — TOMORROW'S STARS

SOPHOMORES — MINORS

FRESHMEN — BABY STARS

HONOR AWARDS



FAE REESE
Our Student Body Vice President, who gave an exceptional performance, was honored with the Kiwanis 1938 citizenship award.

SAM MERRILL
Carried heavy rolls in many scenes as an athlete and scholar, to receive the Kiwanis citizenship award.

METTA HALE

ROMA STEED

MARY L. SMITH

BETH EMMETT

PRESTON JOHNSON

QUENTIN WEST

JEANNE ROSKELLEY

FAE REESE

ARVELLA WATTS

NORMAND ANDREW

After serious thought and deliberation the critics awarded these students the scholarship honors.
At their graduation exercises pins were presented to the highest five, and certificates to the remaining five.



As seniors, stars of this production, we choose as our last, a scene of tribute to the years gone by.

For each one in his time played many parts to attain this degree of growth. We owe much to our able directors and many never to be forgotten friends, but we have progressed as far as possible on this theatre stage, and the bright lights from the adult drama of life beckon us to conquer on its stage, and so as the curtain descends, with fond memories in our hearts of these happy days, we will to the juniors the right and duty to improve on our achievements, to the sophomores, the privilege of sitting in the balcony, and to the freshmen, the privilege of dreaming of becoming seniors and making the dream come true.

SENIOR OFFICERS

SENIORS

ARLENE ALLEN
Cove

La Senia, 4; Sophomore Vice Pres., 2; Junior Pep Club, 2, Pres., 3; Commercial Club, 1; Girls' League Sec., 3, Pres., 4; Home Economics Club, 2,3,4; Opera, 1,2,3.



MARGARET ANDERSON
Richmond

Pep Club, 1,2,3; Commercial Club, 1,2; Opera, 2,3; Tennis, 3; La Senia, 4; Norcachian Staff, 4.



SHIRLEY MAE ANDERSON
Trenton

Beno

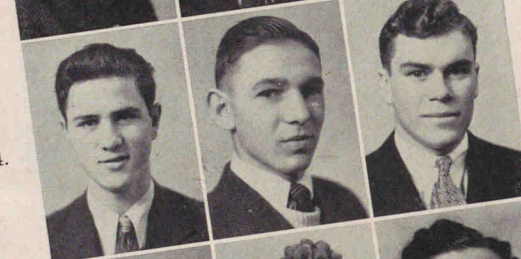


MAVIS ASTLE
Amalga
Beno



DONNA BALLARD
Benson
Home Economics Club, 4.

QUENTIN BALLS
Benson
F.F.A., 2,3,4.



BOYD BARNES
Smithfield
F.F.A., 3,4; Commercial Club, 4.



MARGARET BERNHISEL
Lewiston
Pep Club, 2; Home Economics Club, 4; Prom Committee, 3.

EUNICE BINGHAM
Smithfield

Orchestra, 2,3,4; Song Leader, 4; Dramatic Club, 2; Commercial Club, 2; Debating Club, 3,4; Drama, 4; Opera, 2,3,4; Norcachian Staff, 4.



ARNONA BLANCHARD
Smithfield

Eand, 2,3,4; Orchestra, 4; Athletic Club, 2.

EDRIS ALLEN
Cove
La Senia, 4; Opera, 4; German Club, 4; Girls' Athletic, 4; Girls' League Rep., 2,4.

ORRIS MAE ALLEN
Smithfield

Opera, 1,3,4; Home Economics Club, 1,2,3,4; Pep Club, 1,2.

NORMAND ANDREW
Trenton

Basketball, 3,4; Booster, 4; Debating, 2; Norcachian Staff, 4; Boys' League Pres., 4; Track, 3,4; Tennis, 4; Intramural Basketball, 1; Football 3,4 (Captain); Popularity Contest, 3.

HAZEL ATKINSON
Clarkston

Pep Club, 2; Athletic Club, 2; German Club, 4.

SAM BAILEY
Cache Junction

Editor, Norcachian, 4; Debating Club, 4; Booster Club, 4; School Debating Team, 4.

BETH BAMBROUGH
Cornish

Class Vice Pres., 1; Band, 1,2; Commercial Club, 2; Pep Club, 1,2, Vice Pres., 3; Prom Queen, 3; Popularity Contest, 3.

FARRELL BELL
Richmond

Intramural Basketball, 4.

OMAR BERGESON
Lewiston

Football, 1; Basketball, 1,2.

RACHEL BINGHAM
Cornish

Pep Club, 2; Athletic Club, 3.

GENNEVIEVE BRIGHT
Lewiston

Commercial Club, 1.

CLEO BURT
Clarkston
Opera, 2,4.

DOLORES BUTTARS
Clarkston
Home Economic Club, 1.

MARGE CAINE
Richmond
Pep, 2; Opera, 3,4; Athletic Club,
3,4; Home Economics, 4.

JEANNE CARLSON
Richmond
Beno.

LOA CHAMBERS
Smithfield
Pep Club, 2; Commercial Club, 3;
Orchestra, 3; Home Economics
Club, 4.

KEITH CLARKE
Smithfield
Beno.

LYLE COOLEY
Newton
F.F.A., 3,4; Debating Team, 2;
Debating Manager, 3; Bus. Man-
ager of Polaris, 4; F.F.A. Stock
Judging Team, 4; Boosters, 4;
Debating Club, 1,2,3.

NONA CROOKSTON
Newton
Beno.

EUGENE ELWOOD
Smithfield
Opera, 4; Basketball, 2; Drama-
tic Club, 3; Booster Club, 4;
German Club Pres., 4; Norca-
chian Staff, 4; Intramural
Basketball, 4.

REX ELWOOD
Hyde Park
Basketball, 1.

IREL EPPICH
Trenton
Football, 1,2,4; Band, 1,2,3; Boost-
er, 2,3,4; Opera, 3,4; Senior Pres.,
4; Boys' League Sec., 4; Norca-
chian Staff, 4; Track, 3,4; Intra-
mural Basketball, 4.

LEE BUTTARS
Clarkston
Beno.

LOIS BUTTARS
Clarkston
Home Economics Club, 4;
Drama, 4.

MILTON CARVER
Richmond
Football, 2,3; Opera, 4; Band,
1,2,3,4; Orchestra, 3,4.

SYBIL CHRISTENSEN
Richmond
Band, 1,2,3,4; Drum Major, 4;
Pep Club, 2; La Senia Club, 4;
Orchestra, 2,3,4.

AFTON CHRISTOFFERSEN
Hyde Park
Home Ec., 2,4; La Senia Sec., 4;
Opera, 1,3,4; Band Sponsor, 4.

LOYAL COVEY
Smithfield
Beno

MYRTLE DAHLE
Clarkston
German Club, 4.

DOROTHY ELWOOD
Lewiston
Opera, 1,2; Hobby Club, 3;
Opera, 4.

BETH EMMETT
Smithfield
Dramatic Club, 2; Debating Club,
2,3,4; Tennis Club, 2; Norcachian
Staff, 4; Debating Team, 3; Po-
laris Editor, 4; Asst., 3; Commer-
cial Club, 2.

GORDON ERICKSON
Smithfield
F.F.A., 1,2,3,4; Dramatic Club,
3,4; Commercial Club, 3,4;
Drama, 4.

ROSALYN FACER
Smithfield
Opera, 2,3,4; La Senia Club, 4;
Dramatic Club, 4; Traveling
Assembly, 3.

SENIORS

SENIORS

GENEVIEVE FARR
Smithfield
Dramatic Club, 2,3,4; Drama, 1,4;
La Senia, 4; Opera, 1; Norcachian Staff, 4.

LOA FARRELL
Smithfield
Beno Club.

NORMAN FUNK
Benson
F.F.A., 2,3, Vice-President, 4; F.
F.A. Poultry Judging Team, 3;
F.F.A. Livestock Judging Team, 4.

JACK GODDERIDGE
Smithfield
F.F.A., 2,3.

RUTH GODDERIDGE
Smithfield
Pep Club, 3; Home Economics, 4;
Athletic Club, 4.

KATHLEEN GRANT
Hyde Park
Athletic Club, 2; Home Economics, 3,4; La Senia, 4.

GARTH HANSEN
Smithfield

LA GENE HARRIS
Richmond
Band, 1,2,3,4; Orchestra, 1; Pep
Club, 2; Pep Club Secretary, 3;
Opera, 3; La Senia President, 4;
Prom Committee, 3.

MARY HASLAM
Lewiston
La Senia Club, 4; German Club,
4; Tennis, 3; Pep Club, 1,2;
Home Economics, 2,3;
Opera, 4.

JUNIOR HILLYARD
Richmond
Band, 1,2,3,4; Commercial
Club, 4.

ATHALIE HOWELL
Hyde Park
Opera, 1,2,3,4; Commercial Club,
3,4; La Senia Club, 4; German
Club, 4; Girls' Athletic Club, 2,3;
Student Body Secretary, 4;
Exchange Assembly, 3,4.

ALVIN E. FERRE
Benson
Hobby Club, 2; Dramatic, 2,3;
F.F.A., 2; Tennis, 3; Intramural
Basketball, 3,4.

JAMES GITTINS
Smithfield
F.F.A., 2,3,4.

VENORD GITTENS
Smithfield
Beno.

DORA GODFREY
Clarkston
Opera, 4.

METTA HALE
Smithfield
Dramatic Club, 3; Home Economics Club, 4; Northcachian Staff, 4.

ELDA HANSEN
Trenton
Dramatic Club, 3,4; Pep Club,
1,2; German Club, 3; Hobby
Club, 3; Opera, 3,4.

LORRAINE HARRIS
Hyde Park
Girls' Athletic Club, 3,4; Girls'
Athletic President, 4; Opera, 4;
Drama, 4; La Senia Club, 4.

GERALD HENDRICKS
Lewiston
Boosters, 4; Boys' League Vice-
President, 4; F.F.A., 4; Football,
2,3,4; Track, 3,4; Intramural
Basketball, 4.

LEONE HENDRICKS
Lewiston
Freshman Class Secretary, 1;
Exchange Assembly, 1; Dramatic
Club, 2; Home Economics Club,
2,3,4 Home Economics Club Pres-
ident, 4; Opera, 2,4;
Drama, 3.

ED HYDEN
Smithfield
Football, 3,4; Athletic Manager,
4; Booster Club, 4; F.F.A. Club,
2,3,4; Intramural Basketball, 3,4;
F.F.A. Officer, 4.



GAROLD HYER
Lewiston
F.F.A., 1; Football, 4; Opera, 3,4;
Track, 4; Booster, 4; Intramural
Basketball, 4.



LOUISE HYER
Lewiston
Pep Club, 1; Girls' Athletic Club,
2,3; La Senia, 4.

KIYO IWAMOTO
Lewiston
Commercial Club, 1,3,4.

LLOYD JENSEN
Smithfield
F.F.A., 4.



PRESTON JOHNSON
Richmond
School Debating Team, 2,3,4;
Debating Club, 1,2,3,4; Tennis
Club, 2,3; Band, 1,2,3,4.

BYRON JOHNSON
Benson
Beno.

LLOYD JONES
Newton
Beno.

CLAIR KAREN
Lewiston
Tennis Team, 3,4; Tennis
Club President, 3.

DIXIE L. JONES
Smithfield
German Club, 4; Girls' League
Representative, 4.



ROBERT LAPRAY
Trenton
Track Team, 2,3; Opera, 2;
F.F.A., 4.

THELMA KING
Lewiston
Dramatic Club, 2; Commercial
Club, 2,3,4.

DOROTHY KRISTOFFERSON
Richmond
Drama, 4; Dramatic Club, 4;
La Senia Club, 4.



ALIENE LAYNE
Lewiston
Athletic Club, 2.

GLEN LARSEN
Cove

F.F.A., 1, Treasurer, 2; President,
3; Booster Club, 3,4; Sopho-
more Class President, 2; Football,
3,4; Student Body President, 4.

ARTHUR LEWIS
Smithfield
Dramatic Club.

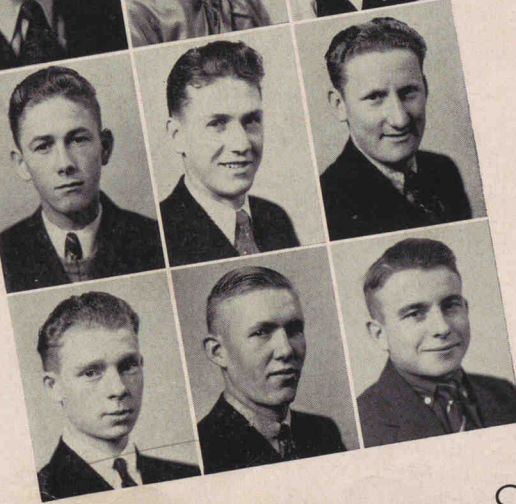


DOROTHY LEAVITT
Cornish
Pep Club, 2,3; German, 4;
Girls' Athletics, 2,3.

CLAYTON LEWIS
Richmond
Hobby Club, 3; Intramural Bas-
ketball, 1,2,3,4; Football, 1,2,3,4;
Band, 1,2,3,4; Basketball, 2;
Opera, 3,4; Commercial, 3.

LOWELL LEWIS
Richmond
Band, 2,4; Orchestra, 4;
Hobby Club, 3.

STRATFORD LOOSLE
Clarkston
Band, 1,2,3,4; Orchestra, 3;
Opera, 3,4.



BUDD LOW
Smithfield
Basketball, 2,3, (Captain), 4; Ten-
nis Club, 3; Booster Club, 4;
Boys' League Representative, 3.

MAX LOWER
Lewiston
Tennis Club, 3.

SENIORS

SENIORS

PAUL McKNIGHT
Lewiston
Tennis Club, 3; Intramural
Basketball, 1.

EDWARD K. MARKHAM
Smithfield
Football, 1,2,4; Track, 1,2,3; Or-
chestra, 2,3; Band, 1,2,3,4;
Intramural Basketball, 3,4.

ALICE MATHER
Smithfield
Commercial, 3,4; La Senia, 4;
Opera, 2; Prom Committee, 3.

SAMUEL MERRILL
Smithfield
Football, 1,2,3,4; Track, 1,2,3,4;
Debating, 1,2; Dramatic Club, 1,2,
(President), 4; Booster Club, 3,4;
Drama, 3,4; Opera, 3,4; Hand-
book, 4; Dramatic Award, 3;
Sport Editor Norcachian, 4.

NORMAN MORRISON
Lewiston
Beno

DALE MORTENSEN
Smithfield
Beno

VEN MYLER
Clarkston
Beno

REYNOLD NOBLE
Smithfield
Opera, 3,4; Drama, 3,4; F.F.A., 3;
Football, 3; Prom Committee, 3.

CONNIE ORVIN
Trenton
Beno

PEGGY PARKINSON
Lewiston
Commercial Club, 1; Dramatic
Club, 2; Home Economic
Club, 3,4.

CARRIE McQUARRIE
Hyde Park
Girls' Athletic Club, 2,3; La Senia,
4; Commercial Club, 3,4; Senior
Vice-President; Band Sponsor, 4;
Opera, 2,3,4; Prom Committee, 3;
Popularity Contest, 3.

GLEN MAISEY
Cornish
Track, 3, (Captain), 4; Football,
4; Band, 1,2,3; Opera, 4;
Intramural Basketball, 4.

JULIA MERRILL
Smithfield
Pep Club, 2,3; Hobby Club, 3;
Drama, 4; German Club, 4.

DELBERT MEYER
Smithfield
Band, 2,3,4.

JANICE MILLIGAN
Smithfield
Junior Vice-President; Prom Com-
mittee, 3; Commercial Club, 3;
President, 4; La Senia Club, 4.

LO REE MUNK
Amalga
Pep Club, 3; Home Economics, 4;
German Club, 4.

VERAL NILSON
Smithfield
Pep Club, 2; Home Economic
Club, 4; Commercial Club, 4.

ELOISE NOBLE
Smithfield
Dramatic Club, 4; La Senia
Club, 4.

MARJORIE PARKINSON
Smithfield
Pep Club, 2; Commercial Club, 3;
Girls' League Representative, 3;
Home Economic Club, 4.

ROBERT PARSON
Benson
Tennis, 3; Intramural
Basketball, 1,2,3,4.

MERVIN PETERSON
Hyde Park
Band, 1,2,3,4; Boosters Club, 3,4;
Intramural Basketball, 3,4; As-
sistant Cheer Leader, 3; Cheer
Leader, 4; Opera, 4; Prom
Committee, 3.



WINN PETERSON
Smithfield
Beno

MARY PETERBERG
Richmond
Band, 3,4; Commercial
Club, 3,4.

LEW PILKINGTON
Smithfield
Beno

WARREN RASMUSSEN
Clarkston
Beno

ALTHEA RAWLINS
Lewiston
Dramatic Club, 3,4; Commercial
Club, 4; La Senia Club, 4;
German Club, 4.

MARY RAWLINS
Lewiston
Dramatic Club, 2,3; Commercial
Club, 1,2,3,4; Commercial Club,
Vice-President, 4; Band, 2,3;
Opera, 4; La Senia, 4;
Norcachian Staff, 4.

FAE REESE
Benson
Opera, 1,2,4; Debating, 4; Com-
mercial, 3; Asst. Song Leader, 3;
Student Body Vice-President, 4;
Norcachian Staff, 4; Exchange
Assembly, 2; Band, 1,2,3,4;
Popularity Contest, 3.

JESSIE RICKS
Benson
Commercial Club, 3; Athletic
Club, 4.

VAL RIGBY
Lewiston
Basketball, 3,4; Student Executive
Council, 4; Booster Club, 4; Com-
mercial Club, 1; Popularity
Contest, 3.

GEORGIA SCOTT
Richmond
Beno.

JESSIE SEAMONS
Hyde Park
Girls' Athletic Club, 3; Home
Economics Club, 3,4; German
Club, 4; La Senia Club, 4.

HAROLD PHILLIPS
Smithfield
Basketball, 3,4.

DARRELL PITCHER
Smithfield
Booster, 2,3,4; Sophomore Presi-
dent, 2; Basketball, 2; Intramural
Basketball, 3,4; Drama, 3;
Prom Chairman, 3.

MARCELL PITCHER
Cornish
Opera, 1,2,3,4.

LINDSAY RAWLINS
Lewiston
F.F.A., 1,2,3.

HAL READ
Smithfield
F.F.A., Vice-President, 3; F.F.A., 4;
Member of Poultry Judging
Team, 2.

ANNA LOU REES
Smithfield
Opera, 1,2,3,4; German Club
Vice-President, 4; Commercial
Club, 3; Band Sponsor, 4;
La Senia Club, 4.

DALE RIGBY
Newton
Intramural Basketball, 3; Poultry
Judging Team, 4.

JED ROBINSON
Richmond
Booster Club, 1,2,3,4; Opera, 2,4;
Intramural Basketball, 3,4; Track,
3; Football, 1; Basketball, 1;
Tennis, 2; Athletic Manager, 3;
Assistant Athletic Manager, 2.

JEANNE ROSKELLEY
Smithfield
Junior Prom Committee, 3;
Drama, 3; Debating Club, 3,4;
Debating Club Secretary, 4;
Handbook Committee, 4; Norca-
chian Staff, 4; Dramatic
Club, 2,3.

MARY LANGTON SMITH
Smithfield
Orchestra, 2,4; Dramatic Club, 2;
Debating Club, 2,3,4; Opera,
1,2,4; Norcachian Staff, 4; Ex-
change Assembly, 2,3; Junior
Prom Committee, 3; Drama, 3,4;
Debating Club Secretary, 2; De-
bating Club President, 4; Tennis
Club, 2; School Debating Team,
3,4; Oratorical Contest, 3,4.

SENIORS

SENIORS

MAXINE SMITH
Smithfield
Pep Club, 2; Type Award, 3;
Commercial Club, 4; Home Eco-
nomics Club, 4.

VERNON SMITH
Richmond
Band, 1,2,3,4.

DONNA SORENSON
Cornish
Commercial Club, 3,4; Commer-
cial Club Secretary, 4; German
Club, 4.

LOUISE SPILLMAN
Smithfield
Hobby Club, 3.

ROMA STEED
Richmond
Dramatic Club, 3,4; Dramatic
Club Vice President, 4; Commer-
cial Club, 1,2,3,4; German Club,
4; La Senia Club, 4; Pep Club, 3;
Drama, 3; Hand Book Staff, 4;
Norcachian Staff, 4.

DEE TARBET
Smithfield
F.F.A., 2,3,4.

REUBEN THOMPSON
Beno.

REX THOMPSON
Clarkston
Intramural Basketball, 1,3,4; Op-
era, 2; German Club, 4.

MARY CHERRILE THORNLEY
Smithfield
Opera, 3; Pep Club, 2; Athletic,
2,4; Home Economics Club, 4.

KATHERYN TUBBS
Newton
Home Economics Club, 3; La
Senia, 4.

DALE VAN ORDEN
Smithfield
Booster Club, 3,4; Booster Club
Secretary, 4; Tennis Team, 3;
Tennis Club, 2,3; Johnson Medal,
3; Polaris Staff, 3; Commercial
Club, 4; Senior Class Secretary,
4; Norcachian Staff, 4; Junior
Prom Committee, 3.

WENDELL SMITH
Smithfield
F.F.A., 3; Hobby Club, 3.

BARBARA SOUTH
Trenton
Opera, 2.

HAROLD SPACKMAN
Trenton
F.F.A., 4.

WILLIAM MACK STODDARD
Richmond
Band, 1,2; Norcachian Staff, 4;
F.F.A., 4.

KLEA TELFORD
Lewiston
Commercial Club, 1,2; German
Club, 3; Home Ec. Club, 3,4;
Girls' League Vice Pres., 4; Band
Sponsor, 4.

LOLA THOMPSON
Clarkston
Dramaic Club, 3.

WENDELL L. THOMPSON
Clarkston
F.F.A., 3,4.

BUDD TOUT
Smithfield
Orchestra, 2,3,4; Opera, 2,3;
Drama, 3,4; Athletic Manager, 3;
Sophomore Class Secretary, 2;
Booster Club, 3,4; Dramatic Club,
2,3; Norcachian Staff, 4; Junior
Prom Committee, 3; Intramural
Basketball, 2,3.

GAYE TRIPP
Richmond
Home Economics Club, 3,4;
Drama, 3.

DEE VAN ORDEN
Lewiston
Booster Club, 1,2,3,4; Freshman
Class President, 1; Tennis, 1,2,3;
4; Band, 1,2,3; Booster Club Vice
President, 3; President of Tennis
Club, 3; Tennis Club, 1,2,3; Com-
mercial Club, 1.



ETHEL WAITE
Hyde Park
Girls' Athletic Club, 1,2,3,4; Home
Ec. Club, 3,4; La Senia, 4;
Drama, 4.



RULON WAITE
Smithfield
Opera, 3,4; Debating Club, 3;
Dramatic Club President, 4; Ger-
man Club, 4; Norcachian Staff, 4;
Traveling Assembly, 3.

VERO WARDELL
Cove
Basketball, 4; Intramural
Basketball, 3.

ARVELLA WATTS
Smithfield
Opera, 2; Commercial Club, 3,4;
La Senia, 4; Executive Council, 4.



CONSTANCE WEBB
Richmond
Pep Club, 1,2,3; La Senia, 4;
Opera, 3; Dramatic Club, 1,2;
Prom Committee, 3.

BRUCE WEBB
Richmond
Track, 4.

DAVID WEEKS
Smithfield
Beno.

ELDON WEBB
Richmond
Commercial Club, 2; Tennis Club,
3; Dramatic Club, 4; Opera, 2,3,
4; Drama, 4; Norcachian
Staff, 4.

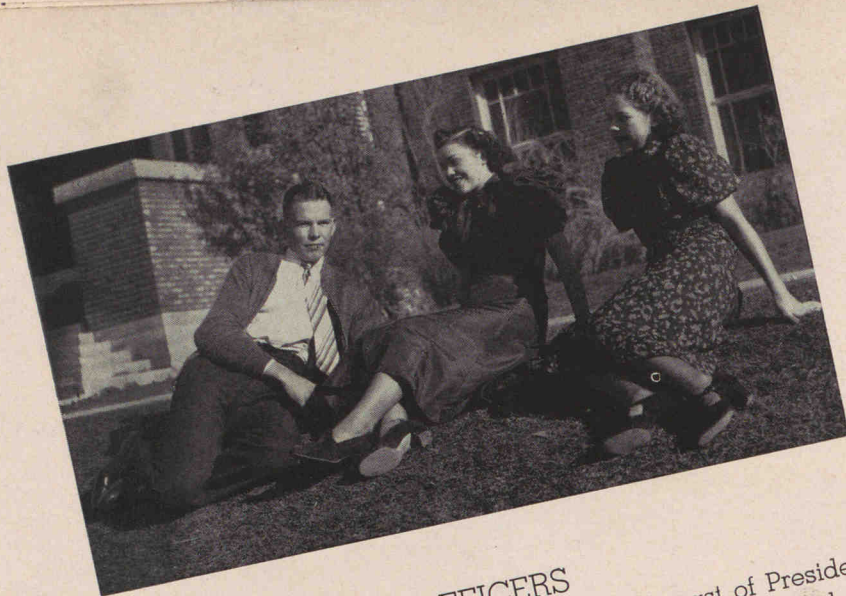


QUENTIN WEST
Smithfield
F.F.A., 2,3,4, Sec., 3; Bus. Man-
ager Norcachian, 4; Opera, 4;
Band, 2,3,4; Debating Club, 2,
Vice Pres., 3,4; Debating Team,
2,3,4; F.F.A. Judging Team, 3;
Public Speaking, 3,4.

ETHEL WOODLAND
Richmond
Junior Class Sec., 3; Tennis Club
Sec., 3; La Senia Vice Pres., 4;
Pep Club, 1,2,3; Girls' Athletic
Club, 1,2; Dramatic Club, 2; Debating
Club, 4; Opera, 1,2,4; Prom Com-
mittee, 3; Norcachian Staff, 4.



SENIORS



OFFICERS

It is with enthusiasm that we extend to the able cast of President Clinton Nelson, Vice-President Carrell Hatch, and Secretary Naomi Hendricks, much applause for their spectacular direction of Tomorrow's Stars.

The stage was set with the participation of debaters, songsters, actors and athletes, and has been footlighted by a gala promenade, which shines forth as the outstanding attraction (or prominent sell-out) of the year.

The prospective leads for next season's show, having finished their parts as Tomorrow's Stars, are looking forward eagerly to producing an even greater advancement in this Theatre of life in 1938-39.

JUNIORS

- Row 1: Delbert Bench, Ann Louise Barber, Lynn Balls, NaDene Ballard, Shirley Baker, Harry Baer, Darlene Andrew, Roland Anderson, Neldon Anderson, Richard Allred.
 Row 2: Ray Barker, Keith Barker, Garth Bergeson, Ted Bernhisel, Marzella Bingham, Winston Benson, David Benton, Ardell Bodily, Ray Boman, Clyde Bright, Clyde Allred.
 Row 3: Eva Christensen, Bonne Carlson, Emma Cardon, Mary Buxton, Verl Buttars, Nona Buck, Daisy Brezoff, Athleen Brough.
 Row 4: LaVon Duce, Venna Downs, Lillie Dobbs, Hazen Deppe, Ray Dallof, Gay Dahle, Arta Dahle, Melba Clayson, Ella Christofferson, Ralph Cooley.
 Row 5: Daniel Griffith, Georgia Griffin, Ralph Godfrey, Wesley Goodsell, Evan Godfrey, Virginia Fackrell, Roma Erickson, Cleo Egan, Clayne Egan, Jack Coburn.
 Row 6: Harlow Griffin, Lois Gyllenskog, Donna Godfrey, June Garner, Beulah Gancheff, Carl Fuller, Afton Fisher, Harry Fern, Ardith Farrell, Douglas Clark.
 Row 7: Duane Goodwin, Clarence Goodwin.





Row 1: Clinton Nelson, President; Carrell Hatch, Vice President; Naomi Hendricks, Secretary; Evelyn Smyth, Harold Wadsworth, Advisers.

Row 2: Alton Haslam, Doris Harwood, Bea Harris, Luana Hancey, Willa Rae Hansen, Viva Hansen, Terry Hansen, Eldon Hansen, Iva Hancey, Orlo Hancey, Florence Hamp.

Row 3: Tarrell Hatch, Edith Hawkins, Donna Hendricks, Bernard Hendricks, Katheryn Hoffman, Ferris Hillyard, Edith Hoppi, Ruth Hyer, James Jensen, Myron Hatch.

Row 4: Clayton Kearn, Delmar Kartchner, Morean Karren, Lloyd Jorgensen, Dorothy Jorgensen, Dell Jorgensen, Mae Jones, Marva Johnson, Itha Johnson, Marlin Johnson.

Row 5: Cecil Kelsey, Merle Kingsford, Blaine Lamb, Barbara Larsen, Phyllis Larsen, Lorraine Larsen, Reed Lawrence, Lesley Lewis, Doreen Loosle.

Row 6: Merle Christiansen, Carol Miller, Gertrude Merrill, Evelyn Merrill, Iris Meikle, Betty Maisey, Mary McKnight, Ned McCracken, Don McCombs, Lillian Low, Leon Litz.

Row 7: Horace Milligan, Newel King, LaVoy Mortensen, Mildred Merrill, Luella Moore, Leon Murray, Russell Larsen, Earl Griffin, Weldon Griffiths, Viola Veibell.

Row 8: Chester Buttars, LaVere Brown, Ray Baker.

JUNIORS

Row 1: Elwin Peterson, Avis Peterson, Blanche Perkes, Bar Dee Peart, Dorothy Parson, Gordon Olsen, NaDene Noble, Claude Nilson, Bob Nilson, Blaine Nelson, Frank Neilson.

Row 2: Rex Pilkington, Beatrice Pond, Josie Poulson, Averille Porter, Earl Ransom, Verl Ransom, George Rasmussen, Alta Ravsten, Doris Reeder.

Row 3: Darwin Salisbury, Juanita Roskelley, Jack Roskelley, Mabel Rogers, Lorin Rogers, William Rigby, Thora Ricks, Lynn Reese, Cecil Reese.

Row 4: Dorothy Saunders, Ida Smith, Douglas Stephenson, Vaughn Spackman, Marvin South, Norval Smith, Evelyn P. Seamons, Ervin Seamons, Annalene Seamons, Clare Spackman.

Row 5: Bara Stoddard, Phyllis Stoddard, Bob Hill, Bernice Thompson, Grant Tubbs, Bessie Van Orden, Kenneth Waite, George Thornley, Doyle Read, Hal Wright.

Row 6: Vernal Thompson, Vernace Winn, Jeannette White, Nord Westover, Paul Pedersen, Lathael Winn, Winona Wheeler, Laura Webb, Leone Sparks, Keith Wardell, Louise Wiser.





OFFICERS

With a feeling of satisfaction, we ring down the curtain on the year 1937-1938. The second act of our school life has the cast, President, Dale Johnson; Vice President, Gayle Reese, Secretary, Gene Funk, and Advising Director, Miss Merrill. The minor stars'—Sophomores—most successful parts were their snappy assembly and unusual annual party.

SOPHOMORES

- Row 1: Theola Merrill, Adviser; Dale Johnson, President; Gene Funk, Secretary; Gayle Reese, Vice President.
- Row 2: Eleda Beutler, Venice Bergeson, Leah Benson, Boyd Barker, Dean Athey, Dean Andrew, Jess Anderson, Idelle Anderson, Jack Allen, Beth Allen, Verna Abel.
- Row 3: Velma Burt, Ted Buttars, Kenneth Cardon, Zara Bybee, Aileen Chambers, Carma Chambers, Jay Cash, Robert Choate, Maurice Christensen, Leland Cowles.
- Row 4: Wanda Berger, Gladys Eppich, Sidney Bingham, Norma Bingham, Elsa Bodily, Amanda Buck, Billy Bowles, Donald Blair, Everett Fackrell, Waldo Cook, Ellen Cook.
- Row 5: Vernon Ellis, Lois Downs, Theoda Downs, Carma Erickson, Caroline Facer, Ada Forrester, Donna Glover, Beth Godfrey, Treesa Godfrey, Dora Gregory.
- Row 6: Junior Bingham, Quentin Barker, Glen Gyllenskog, Rosalyn Godfrey, Ruth Griffin, Richard Earl Griffin, Leah Griffin, Dick Griffin, Vernon Elwood.



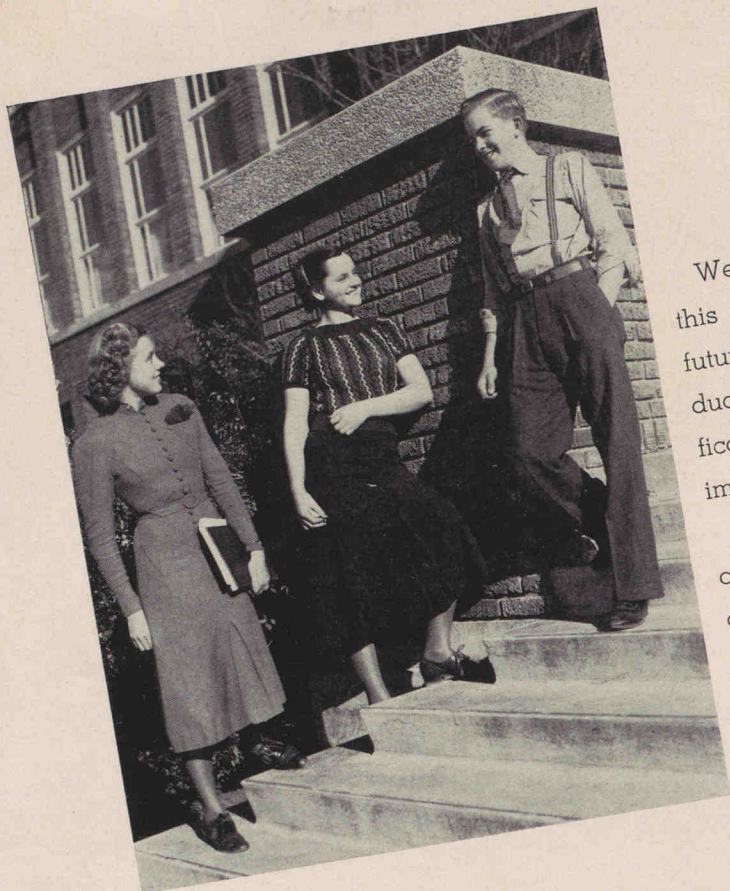


Row 1: Leona Hendricks, Joan Hendricks, Ray Hayes, Edna Hawkins, Zenda Harrison, Josephine Harris, Ruby Harper, Alene Hansen, Melva Hamp, Reid Hall.
 Row 2: Rhea Hicken, Noel Hillyard, Gwendolyn Hogan, Kedreth Hogan, Wade Howell, Roma Hurren, Rula Hurren, Glenna Hyde.
 Row 3: Clark Jorgensen, Venal Jones, Ruth Jorgensen, Ardith Jones, Mary Lou Johnson, Ruth Marie Jensen, Charlotte Jensen, Maxine Jenkins, Rhea Jardine, Wilma Hyer, Lydia Hyer.
 Row 4: Leo Kershaw, Grant Kent, CaDelia Kershaw, Jimmy Kostoff, Glen LaPray, Viola Kirby, Alice Lewis, Bonne Lewis, Estelle Lewis, Benice Litz, Betty Loosle, Morris Litz.
 Row 5: Donna Milligan, Ned Miles, Laura Miles, Lauella Miles, Verna Meyer, Donna Myrle Mather, Carma McCombs, Jenna Lou McCann, Hope McCann, Dorothy Lundberg.
 Row 6: Junior Munk, Wanda Belle Nilson, Robert Nilson, Mark Nilson, June Nelson, Janice Nelson, Venna Neeley.

SOPHOMORES

Row 1: Mildred Pitcher, Elaine Pitcher, Zona Pilgrim, Velda Peterson, Larnell Peterson, La Moyle Peterson, Dennis Peterson, Claude Peterson, Nona Payne, Marie Olsen.
 Row 2: Weldon Pitcher, Valoise Pitcher, Darrel Porter, George Preece, Paul Preece, Winona Preece, Elda Purser, Edna Purser, Wendell Ransom.
 Row 3: Myrle Kundy, Fred Robinson, Elaine Riggs, Beth Rigby, Max Rich, Budd Read, Warren Rawlins, Rowena Rasmussen, Jenis Rasmussen, Edward Rasmussen.
 Row 4: Earl Sanders, Lucille Roylance, Junior Sanders, Homer Seamons, Evelyn Seamons, DeVern Sparks, Richard Stevens, Gordon Sutherland, Joy Slack, Carol Smith, Marie Spillman.
 Row 5: Alice Riches, Virginia Waite, Janeal Villet, Mattie Turner, Shirley Tueller, Ted Buttars, Roma Gene Thurston, Vance Thompson, Grant Thompson, Faye Thompson.
 Row 6: James Williams, Alvin Williams, Blaine Merrill, Paul Wheeler, Lynn Weeks.





OFFICERS

We the Baby Stars (Freshmen), close this year's show with an eye for the future. Our parts in the 1937-1938 production, although seemingly insignificant, have prepared us to take more important rolls in the next drama. Our accomplishments this year were a class party, an enjoyable assembly, and successful school debates.

FRESHMEN

- Row 1: Junior Brown, President; Elaine Kent, Secretary; Anne Kennedy, Vice President; C. B. Stoddard, Adviser.
- Row 2: Scott Bair, Lola Atkinson, Marion Andrew, Bonnie Andrew, Rene Anderson, Ila Anderson, Bonnie Elaine Anderson, Arva Anderson, Melvin Allred.
- Row 3: Blain Bair, Thomas Bair, Bobby Baird, Patsy Barber, Verl Beecher, Glenn Bell, Doris Bench, Lloyd Benton, Tharrel Bergeson.
- Row 4: Wanda Bright, Wendel Bowles, LaPreal Boman, Connie Boman, Melva Blair, Velma Bingham, Lorraine Bingham, Evona Bingham, Joan Bernhisel, Harry Bernhisel.
- Row 5: Wayne Brough, Denton Brough, Colleen Bullen, Fawn Buttars, Guy Buttars, Lyle Buxton, Norman Carlson, Narene Christensen, Irena Christensen, Eva Christensen, Marie Christensen.
- Row 6: Afton Duce, Lucille Duce, Lawrence Cottle, Helena Cottle, Marvel Cooley, Vidmar Clayson, Lorraine Clark.





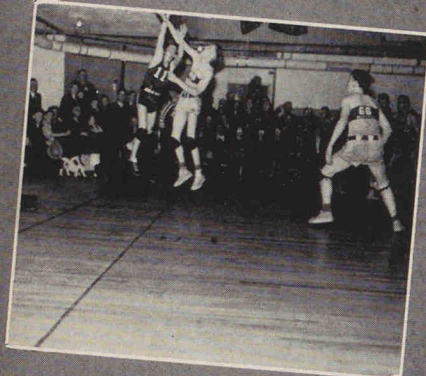
Row 1: Val Glover, Lee Garner, Avis Goodsell, Wanda Godfrey, Patsy French, Dorain Eskelson, Glen Eppich, Parley Elwood.
 Row 2: Edna Griffin, Marva Haglund, Anna Hancey, Gayla Hancey, Melba Hancey, Todd Hardy, Ruth Harper, Edra Ann Haslam, Leona Hatch, Betty Jean Hayes.
 Row 3: Dale Jensen, Marjorie Johnson, Ida Mae Johnson, Venice Jardine, Cherrill Jardine, Marjorie Hyer, Clair Hyer, Angus Hyer, Vila Hyde, Doris Hyde.
 Row 4: Nolan Karren, Max Jones, Kenneth Kartchner, LaRee Lamb, Forrest Larsen, Glen J. Larsen, Dell Lewis, Wanda Loosle.
 Row 5: LuDean Balls, Clair Balls, Anna Lou Merrill, Delores Miller, Vernon Merrill, Floyd Maisey, Wallace McQuarrie, Alice Lower, Ray McMurdie.
 Row 6: Earl Dahle, BerDean Buttars.

FRESHMEN

Row 1: Maureen Perkes, Donna Perkes, Leora Payne, Helen Payne, Esther Osbourne, Gloria Olsen, Doris Nielson, Dale Nielson, Zan Nelson, Beth Neeley.
 Row 2: DeVan Peterson, Marion Pond, Norma Preece, Loyal Pullum, Donna Poulsen, Glen Ravsten, David Rawlins, Flora Rigby, Flora Dee Robinson.
 Row 3: Borman Smith, Gale Spackman, Velda Smith, Ila Spackman, Beulah Smith, Leone Seamons, Audrey Seamons, Mardian Saunders, Lyman Salisbury, Weldon Rogers.
 Row 4: Afton Stoddard, Carl Ray Stoddard, Cheryl Stoddard, Hazel Stoddard, Myrna Taggart, Artella Thompson, Lemojne Thompson, Norma Thompson, Vella Thompson, Ralph Thornley.
 Row 5: Dee Wiser, Barbara Wiser, Wayne Wheeler, Donna Wheeler, Marr Waddoups, Martin Veibell, Hazel Van Orden, Eldon Thompson.
 Row 6: Wallace Wiser, LaMar Merrill, Hurren Waite, Hal Robinson, Owen Woodland.



INTERMISSIONS



August 30—The fall round up. The herd was kept well under hand, because the whole student body was registered in one day.

September 12—Fair Day.

September 24—Get acquainted day.

October 8—North Cache scalped the Preston Indians 33-0.

October 15—The Bulldogs chased the Warriors back to Weber with a score of 41-6.

November 5—Do you remember that exciting game at South Cache—12-0 in favor of North Cache.

November 24—Apron and overall harvest ball.

December 10—"The Drums of Death," school drama, won favor with its public, the student body.

December 21—The chorus class presented the Christmas Cantata.

December 23 — Santa visited North Cache before we left for our Christmas vacation.

January 7—The basketball season began as we defended ourselves against Bear River.

March 4—The Bulldogs chased to Logan to play basketball with the Grizzlies.

March 18—Our memories reflect back to this successful Junior Prom.

March 31—A wild west opera, "The Golden Trail" wound its way into the heart of North Cache.

April 1—The Seminary Graduation party climaxed an interesting day of activities.

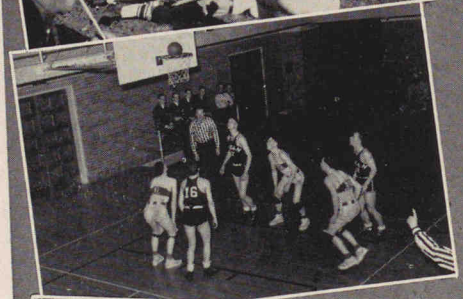
April 29—Girls' League Day worked out in a beautiful theme was set off by its dancing party in the evening.

May 6—The high and mighty seniors spent the day at the U.S.A.C. finding out how dumb they were.

May 13-14—Black and White Day.

May 20—Health Day.

May 27—Graduation exercises and another year of lovely memories to chalk down in our book.



ACT THREE

ACT THREE



PRODUCERS



SCENES

PUBLICATIONS

CLUBS

ACTIVITIES



BETH EMMETT
Editor



LYLE COOLEY
Business Manager

If as a yearbook staff,
we have succeeded in por-
traying to you, by the
Polaris, an ordered and
complete record of your
activities during this care-
free school year, our ef-
forts have not been in
vain.

POLARIS



Gertrude Bentley, Adviser; W. W. Perkins, Adviser; Ferris Hillyard, Assistant Business
Manager; Dorothy Jorgensen, Assistant Editor; Beth Emmett, Editor; Lyle Cooley, Business
Manager; Ruth Hyer, Advertising Associate; Viva Hansen, Typist.



SAM BAILEY
Editor



QUENTIN WEST
Business Manager

To this, the publication department of our true school life drama, we extend our hearty congratulations.

This able group of stars kept every actor and actress well informed on all the affairs of the show.

A larger number of editions was published than ever before. Each one showed the enthusiasm of the staff.

May their work in this department of our drama help them in their future lives.

NORCACHIAN

First Row (sitting): Preston Johnson, Assistant Editor; Budd Tout, Dee Van Orden, Irel Eppich, Eldon Webb. Second Row (sitting): Althea Rawlins, Rulon Waite, Eunice Bingham, Roma Steed, Genevieve Farr, ArVella Watts, Eugene Elwood, Omar Bergeson (back), Fae Reese, Mary Rawlins (back), Samuel Merrill (back), Reynold Noble. First Group (standing): Jeanne Roskelley, W. W. Perkins, Adviser and Instructor; Mary L. Smith, Beth Emmett. Standing: Dale Mortenson, Mack Stoddard, Anna Lou Reese, Julia Merrill, Dorothy Elwood, Donna Sorensen, Beth Bambrough (front), Connie Webb (back), Ethel Woodland, Jessie Ricks, Margaret Anderson. Back Row: Garth Hansen, Dale Van Orden, Normand Andrew, Alice Mather.



Bruce Ricks

1957-1958

GIRLS' LEAGUE

Because of the active and enthusiastic leadership of Arlene Allen, President; Klea Telford, Vice-President; Ruth Hyer, Secretary, and Arta Larsen, Adviser, the Girls' League organization gained the critics' favor.



Officers: Ruth Hyer, Miss Arta Larsen, Klea Telford, Arlene Allen.

Some of the important scenes sponsored by them were: a very entertaining day for Mothers and Daughters, an interesting assembly, and their annual successful Girls' League dance.



Representatives (sitting): Dixie Jones, Edris Allen. (Standing): Hazel Stoddard, Roma Gene Thurston, Carma McCombs, Willa Rae Hansen, Marva Johnson. Gayla Hancy, absent.



BOOSTERS CLUB

The Boosters Club, which was the outstanding male organization of the show, gave successful banquets, won the intramural basketball contest, and were fighting North Cache troopers during the full run of the review.

LA SENIA CLUB

The La Senia Club, an organization of senior girls, led by La Gene Harris, Afton Christofferson, Ethel Woodland, and adviser, Miss Tingey, enjoyed an interesting year of activities including a banquet, pep stunts, and the entertainment of a girls' club from South Cache.





TECHNICAL DIRECTORS FOR SONGS AND CHEERS

As we again part for our summer vacation, we give our sincere thanks for the faithful service the cheer leaders, and song leaders have given us.

Without their help, the goals we have attained could never have been reached.

FRESHMAN AND SOPHOMORE PEP CLUB

Since the division of these younger stars from the Junior Pep Club, they have rightfully been given more recognition.

With their able leaders and a fine cooperative spirit among their members, its success was assured.





DRAMATIC CLUB

Those actors and actresses interested in carrying heavy character rolls, organized themselves together under the leadership of Rulon Waite, Winston Benson, Roma Steed, and Adviser, Miss Spillman.

The technique attained through this association was exhibited under the spotlight in their fine assembly, banquet, and dramas.

JUNIOR PEP CLUB

A girls' organization of tomorrow's stars takes the center of the stage.

Aided by their technical directors, President, Gwen Ballard; Vice-President, Ella Christofferson; Secretary, Viva Hansen, and Miss Alda Rees, adviser, the Junior Pep girls carried many successful scenes—such as banquets, an assembly, and pep rallies for which they received loud applause.





FUTURE FARMERS OF AMERICA

One of the most active groups of technicians is the Future Farmers of America.

Led by President Myron Hatch, Vice-President Norman Funk, Secretary Lynn Reese, Treasurer Scott Hendricks, Sergeant at Arms Ed Hyden, and Adviser Mr. Bair, they again led our school to public notice with representatives in stock judging, fairs, and Black and White Day.

Sitting: Norman Funk, Scott Hendricks, Glen Larsen, LaVon Duce, Gordon Erickson, Dale Rigby, Lynn Reese. Standing: Amos W. Bair, Quentin West, Edward Hyden, Lyle Cooley, Myron Hatch.

HOME ECONOMICS CLUB

A mixed group of players, technically studying home economics, gave banquets, helped sponsor the Harvest Ball, went on travel tours, and produced an entertaining assembly, for which they duly received acclaim from their public.





GERMAN CLUB

Guided by their able directors, President Eugene Elwood, Vice President Anna Lou Rees, Secretary Melba Clayson, and Advising Director Mr. L. D. Spencer, the German Club performance was one of the most outstanding in the drama this year; its scenes varying from clean school campaigns, outstanding assembly, and social parties, to ski carnivals.

COMMERCIAL CLUB

Under the leadership of Janice Milligan, President; Mary Rawlins, Vice President; Donna Sorensen, Secretary; and Miss Gertrude Bentley, Adviser, the commercial club enjoyed practical lectures from business men, educational visits to commercial houses, and many social events during the year.





DEBATING CLUB

Members of the cast who enjoy debating got together as the debating club, elected officers Mary L. Smith, Beth Emmett, Jeanne Roskelley, and Adviser Mr. Frank Raymond. They enjoyed mock debates, and parties, and gave a unique assembly.

SCHOOL DEBATERS

This group of players was selected to take the oratorical and reading rolls in our Drama. Excellent training under the direction of their coach, Frank Raymond, and Debate Manager, Terry Hansen, enabled them to compete with honor, many times on the stages of their competitors Logan, Preston, and South Cache.





ATHLETIC CLUB

This athletic minded group of girls gave a banquet had a swimming party, and went to the A. C. on Play Day to participate in many athletic events.

They have as their leaders, Roma Hurren, Lorraine Harris, Rula Hurren, and Miss Alda Rees, adviser.



BOYS' LEAGUE ORGANIZATION

Enticing intramural basketball tournaments, educational lectures, and an interesting assembly proved the capable leadership of Normand Andrew, Gerald Hendricks, and Irel Eppich as officers of the Boys' League, together with the aid of Coach Whitman and J. L. Peterson, sponsors.



THE BAND

Their brilliant performances made us clamor for more.

Excellent directing of these hard working musicians gave them high score at the district music festival at Hyrum; thereby earning an invitation to participate in the national meet at Provo.

All North Cache is proud of their achievements.

ORCHESTRA

Under the exceptional direction of their conductor, Mr. J. W. Pulsipher, the North Cache Orchestra came to be known as the best in the valley. May they continue to succeed.





OPERA

An outstanding musical scene within the drama was that of "The Golden Trail," portraying the wild west with all its color and atmosphere.

Directed by J. W. Pulsipher

Dramatics—Camilla Spillman

Dancing—Alda Rees

Don Carlos Alvarado.....Reynold Noble
 Dona Barbarita Alvarado.....Orris Mae Allen
 ModestePhyllis Stoddard
 Don Pedro Carranza.....Rulon Waite
 Charles Harrington.....Marcell Pitcher
 Carmela.....Jenna Lou McCann
 Mike O'Rouke.....Eldon Webb
 Dick Garvin.....Mervin Peterson

Martin Hurd.....Sam Merrill
 Myra Hurd.....Patsy French
 Sylvia Hurd.....Carrie McQuarrie
 Joe Grimble.....Marlin Johnson
 Tad Jones.....Zan Nelson
 Montomorency Puddington.....Budd Tout
 TomQuentin West
 BillNewel King

DRAMA "DRUMS OF DEATH"

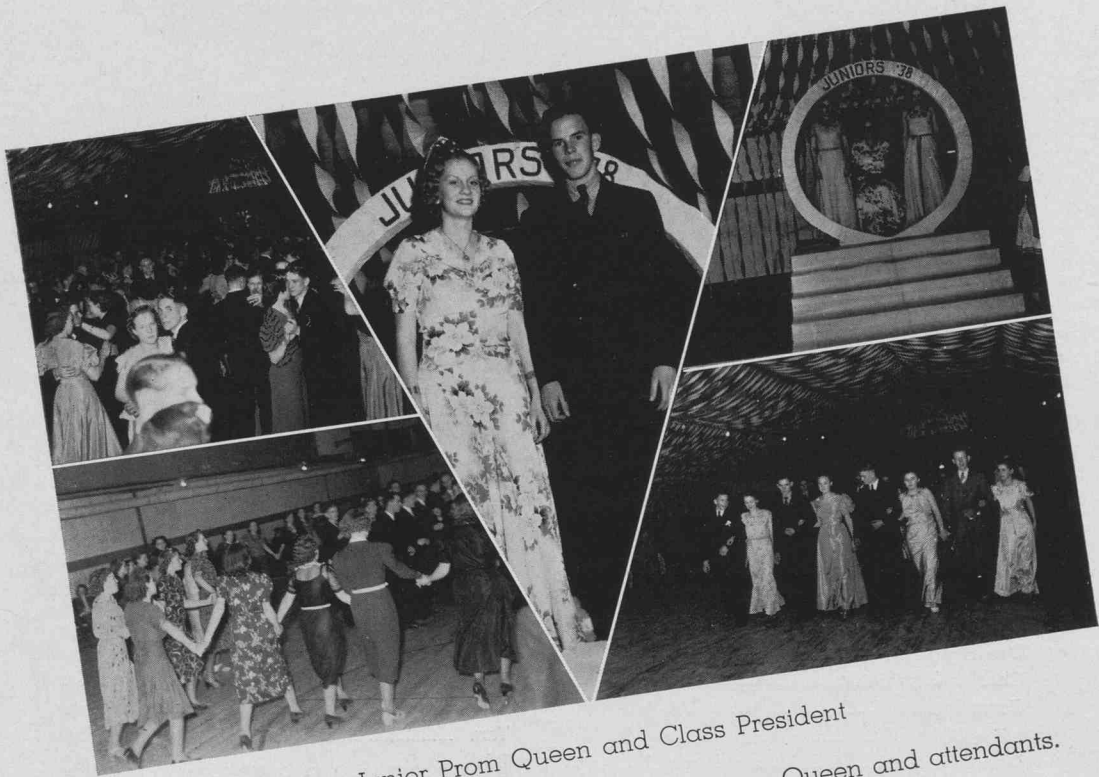
Directed by Camilla Spillman

CelestePhyllis Stoddard
 Sheldon Harley.....Reynold Noble
 JulesDouglas McQuarrie
 Mrs. Oakley.....Avis Peterson
 Mrs. Gillette.....Genevieve Farr

Eugenia Bowles.....Dorothy Kristofferson
 Amelia Gillette.....Mary L. Smith
 Newton Cooper.....Budd Tout
 Doctor Cameron.....Eldon Webb
 Paula BaileyEunice Bingham

Thrills, squeals, and Voo Doo characters, were all a part of "Drums of Death." Its exciting mystery and its love scenes make it a drama long to be remembered.





Dancing cheek to cheek (Prom).
Seminary Fun Frolic.

Junior Prom Queen and Class President
Junior Prom Queen and attendants.
Promenade.

DANCES

North Cache pleasure seekers were entirely satisfied at these gala evening performances in the gym.

The spirit of fun prevailed throughout each evening's entertainment.

ACT FOUR

ACT FOUR

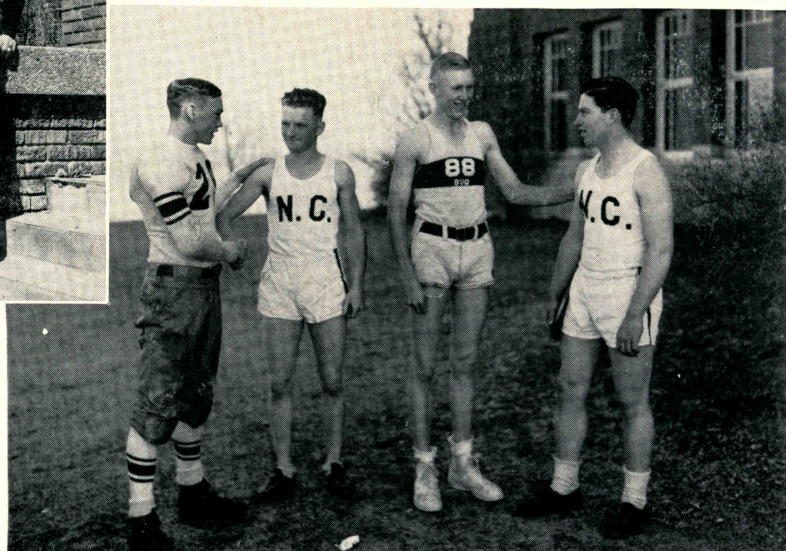


HE-MAN HIGHLIGHTS



SCENES

PLANT MEDAL WINNER
FOOTBALL
BASKETBALL
TRACK - TENNIS
STUDENT LIFE



Bulldog Captains Score Again

They won public acclaim for their leadership.

PLANT MEDAL WINNER

Normand Andrew, a North Cache Bulldog who is loved by everyone, received the Plant Medal Award for 1937-38.

A genius for thinking fast in a pinch, and a man who kept his training rules. He will always be remembered as an outstanding athlete, a fine scholar who took an active part in school activities, and as a man with character.

North Cache.....28	Logan	0
North Cache.....33	Preston	0
North Cache.....41	Weber	6
North Cache.....0	Bear River	33
North Cache.....0	Box Elder	20

FOOTBALL

To Coach Whiting we again extend our praise for his fine direction of the football scenes of this show.

Every part, small or large, was played with courage and sportsmanship.

To the 800 in our cast, those exciting exhibitions with Logan, Preston, and Weber will live forever.



Athletic Managers: (front) Dale Van Orden, Richard (Dick) Stevens.

First Row: Leon Murray, Glen Maisey, Clayton Lewis, Irel Eppich, Hal Wright, Captain Norman Andrew, Glen Larsen, Bernard Hendricks, Sidney Bingham, Reid Hall, Leon Litz.

Second Row: Whiting (coach), Garold Hyer, Sam Merrill, Garth Bergeson (captain elect), Bob Choate, Gerald Hendricks, Verden Talbot, Ed Hyden, Don Blair, Ed Markham, Allen Baker, Whitman (coach).

Third Row: Principal C. I. Stoddard, Leland Coles, Jay Cash, Norval Smith, Ray Hayes, Howard Hansen, Dick Griffin, Darrell Pitcher, Leo Kershaw, A. W. Bair (Athletic Committee Chairman).

North Cache.....18	Bear River	29
North Cache.....17	Weber	24
North Cache.....31	South Cache	32
North Cache.....38	Box Elder	23
North Cache.....35	Logan	22
North Cache.....22	Bear River	24
North Cache.....31	Weber	37
North Cache.....31	South Cache	41
North Cache.....25	Box Elder	27
North Cache.....38	Logan	33

BASKETBALL

Although in outward appearance we can hardly tell Coach Jay Whimtan from the boys he directs, his ability to teach them to live their part has won both for himself and his students fame in the North Cache Theatre.

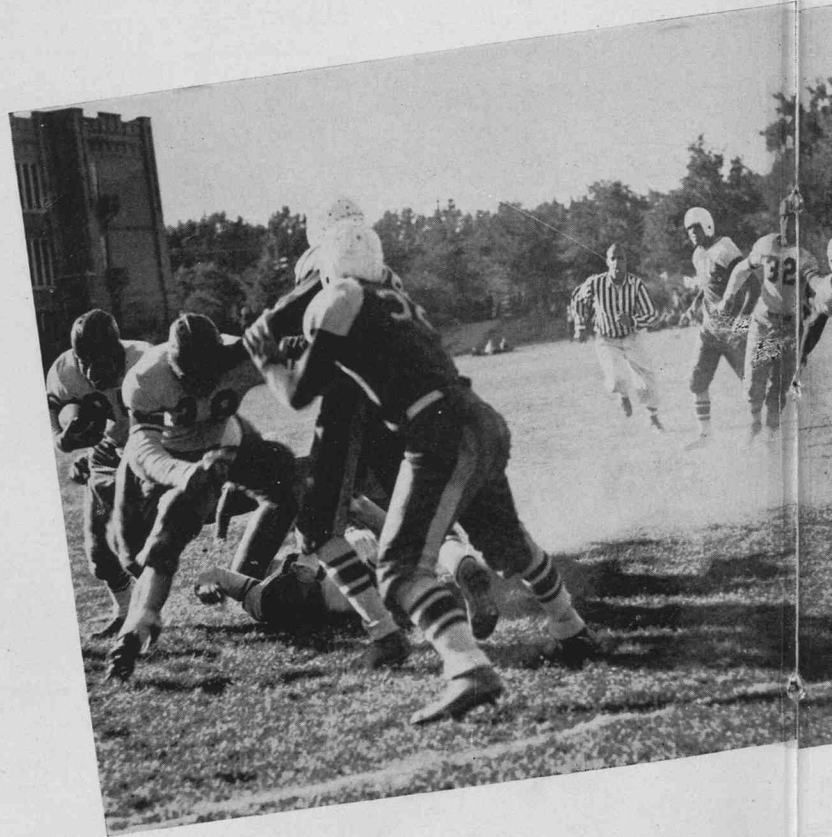
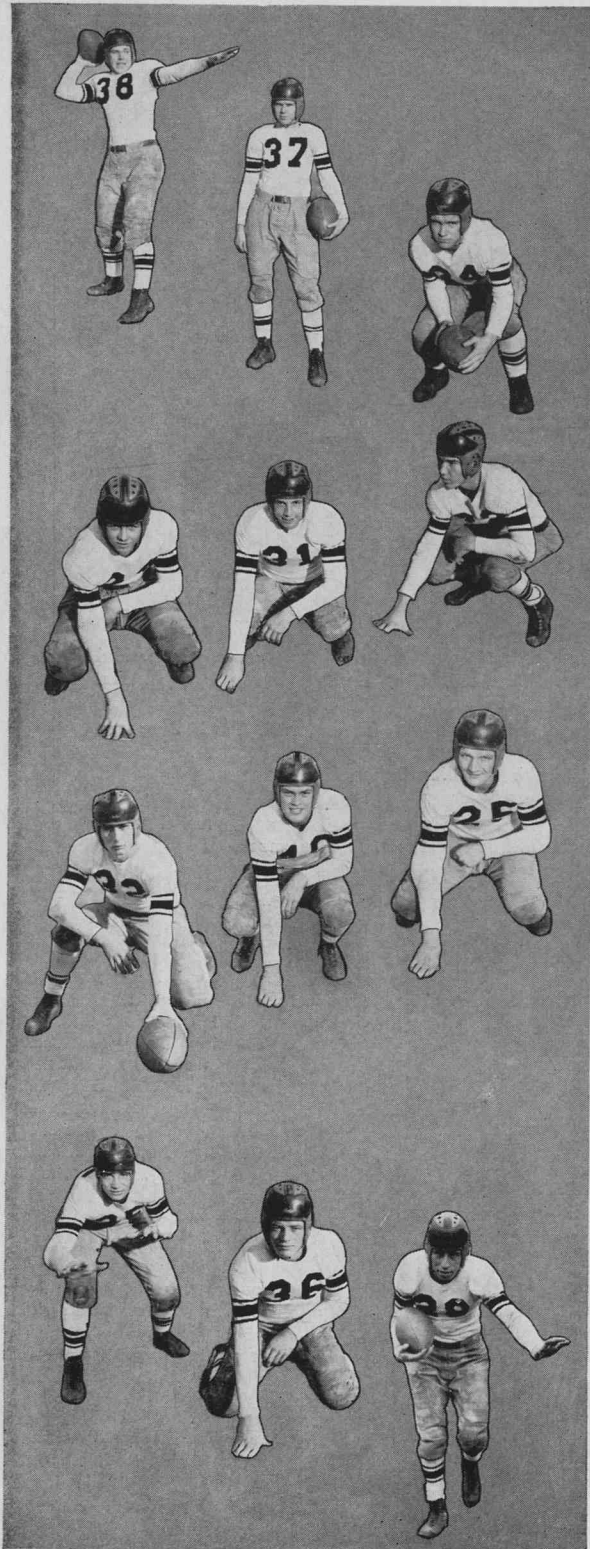
In every game—win or lose—this fighting group of players was strong competition to opposing forces. Boxelder and Logan—our favorite rivals—were both defeated.



Reading clockwise: Normand Andrew, Donald McCombs, Carl Fuller, Clinton Nelson, Budd Low (Captain), Harold Phillips, Garth Bergeson, Coach Jay Whitman, Val Rigby, Vero Wardell.

GRIDIRON STARS

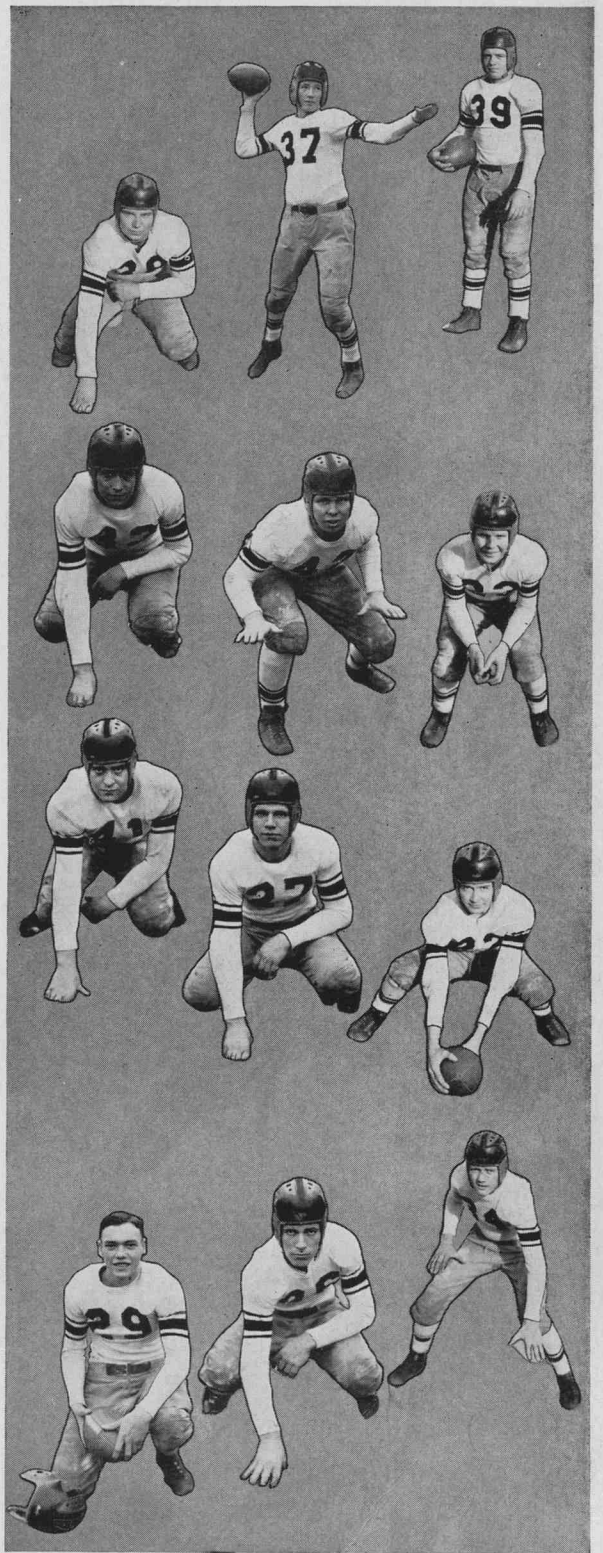
Top to bottom: Leon Murray, Ned Miles, Leland Coles, Norval Smith, Glen Larsen, Reid Hall, Glen Maisey, Verdon Talbot, Edward Hyden, Edward H. Markham, Irel Eppich, Allen Baker.



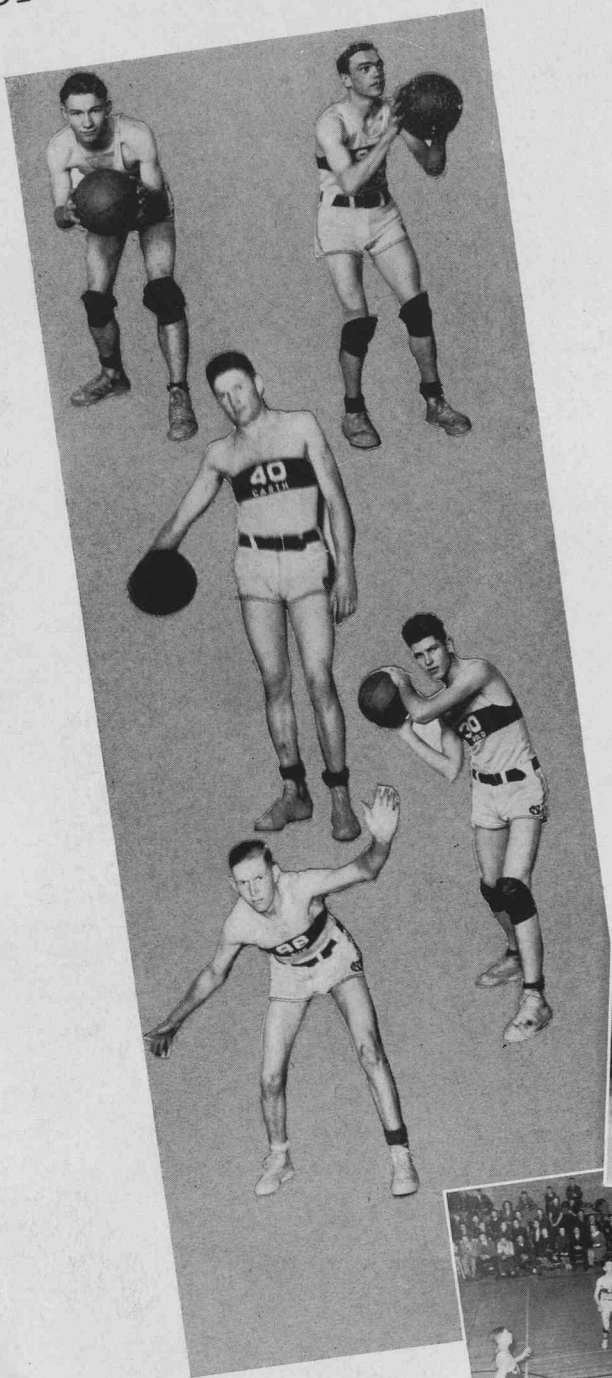
COACH WHITING



Top to bottom: Hal Wright, Bernard Hendricks, Jay Cash, Clayton Lewis, Robert Choate, Leon Litz, Sam Merrill, Garold Hyer, Sidney Bingham, Garth Bergeson, Donald Blair, Normand Andrews.



BASKETBALL STARS



CARL FULLER

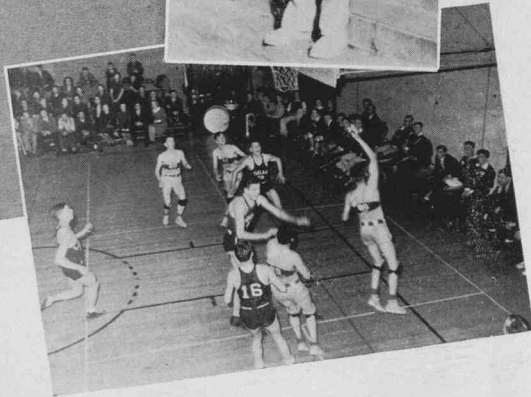
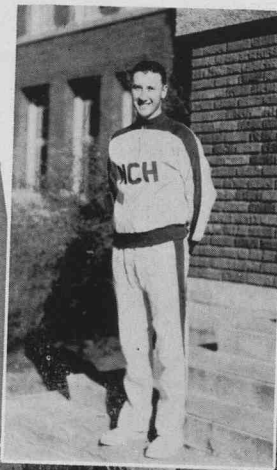
NORM ANDREWS

GARTH BERGESON

HAROLD PHILLIPS

BUD LOW
Captain

COACH WHITMAN





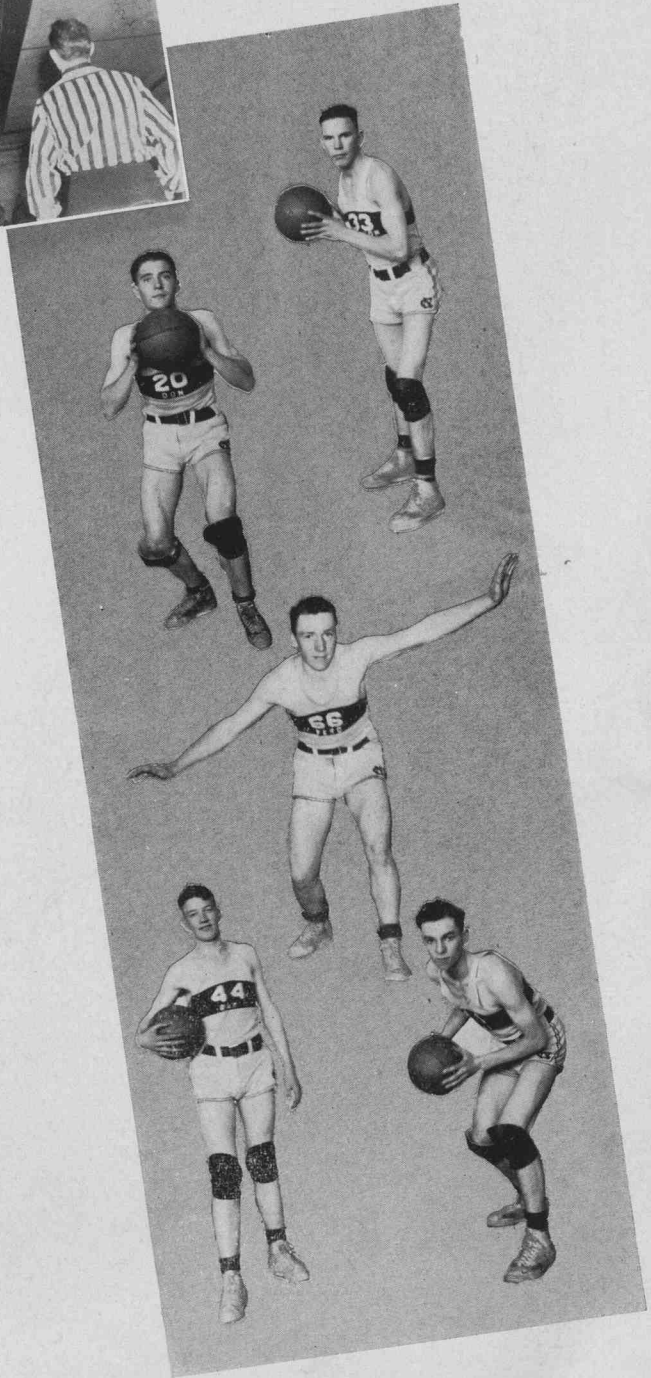
CLINTON NELSON

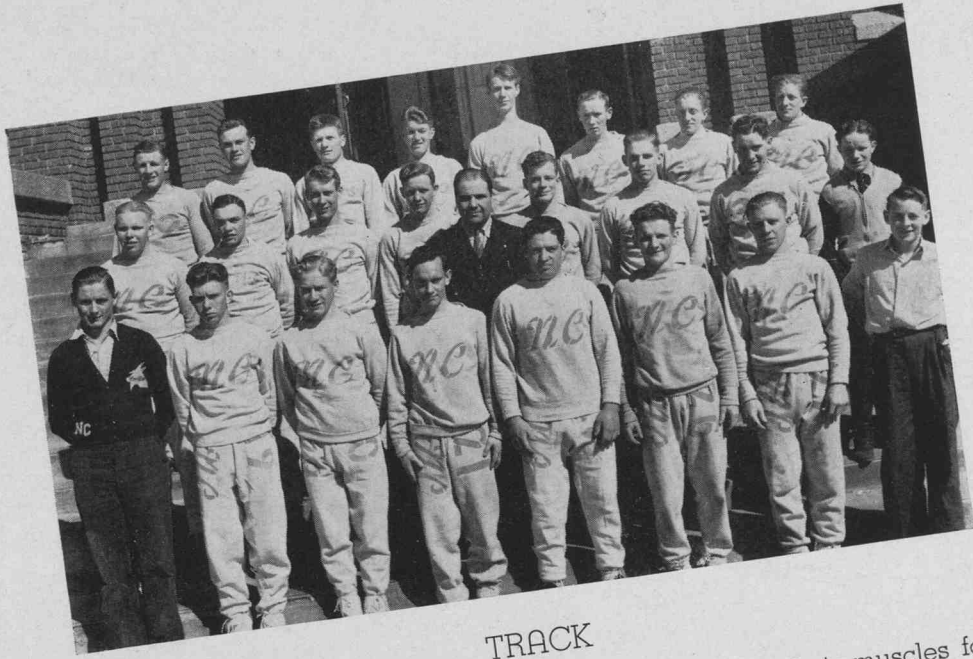
DON McCOMBS

VERO WARDELL

RAY HAYES

VAL RIGBY





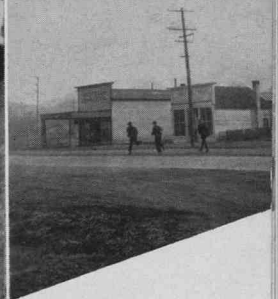
TRACK

These energetic boys are training and developing their muscles for speed under the able direction of Coach Whiting.

TENNIS

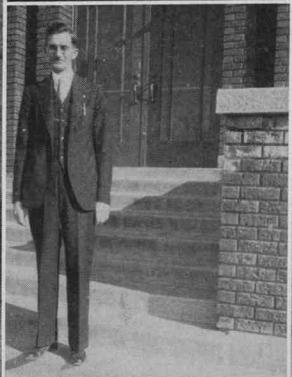
Good sportsmanship and accurate placement of shots were successfully taught to this enthusiastic group of boys by their companion instructor, Coach Whitman.

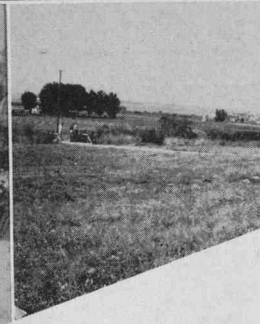
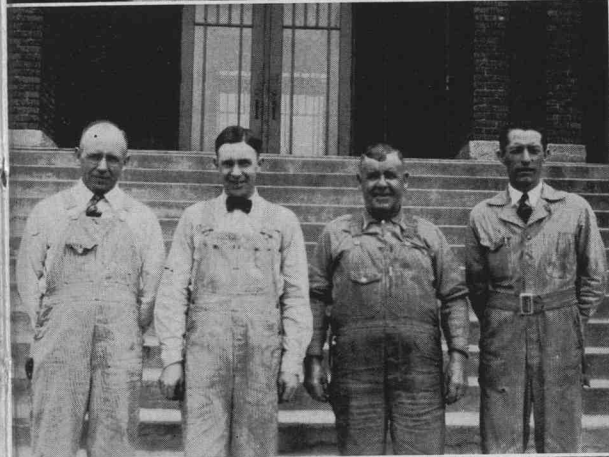
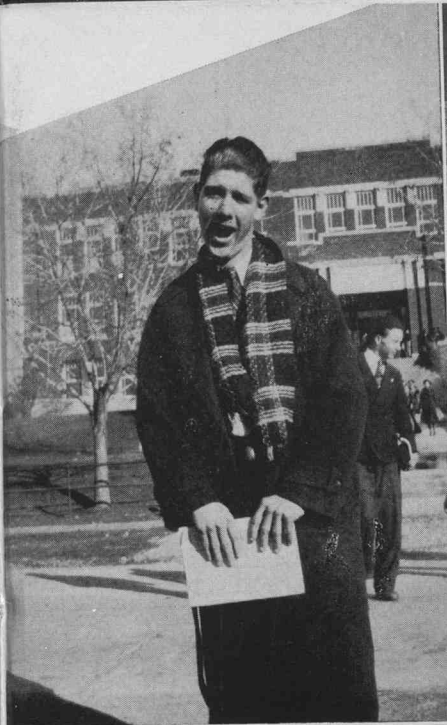




And a skiing we will go. The Norcachian Editor, and next year's student body president bask in the winter sun. Norm makes a basket. A lawn struggle. Our camera shy business manager. What a life. Mr. Thomas, Seminary. Principal Stoddard senses a tense moment during Preston game. Too good to be true. ('38 student body president). The weather was so good we couldn't hear the bell. Darn that train—ahead of schedule again.

Simple Simon and his Japanese Sweetheart. What ya laughin' at Dale? The others don't seem to see it. Snow lovers pose sweetly. Commercial students visit famed typist at A.C. Intramural Basketball winners. What beautiful teeth. And so they were married. Mr. Hicken, Seminary. What's this? Reading the gossip column. It must be good.





Tout on parade. Oh! Them ruby lips. Mr. Moore, Seminary. Patiently, they await our coming. The Yokums from Dogpatch, come to N.C. Still faithful to our cause in janitoring. "Would be" chorus girls doing their stuff. Representatives from foreign countries arrive at the character. The unknown handbook staff. Polaris photographer. Nicotine bridge. Look close and you'll notice a few fishermen, or are they?

STUDENTS

Let's Patronize Our Advertisers ,They Patronize Us!

W. A. BAIR

COAL DEALER

RICHMOND, UTAH

A GOOD BANK

In a Good Town

Lewiston State Bank

LEWISTON, UTAH

Member Federal Deposit

Insurance Corporation

Sales



Service

Compliments of

North Cache Motor Company



WATCH THE
FORDS GO BY

Smithfield
Utah

PHONE 14

"From the most modest cottage to the largest skyscraper, there is a Schlage Lock for every purpose."

SEE YOUR LOCAL HARDWARE AND LUMBER DEALER

T. C. Strayner Company, Salt Lake

Utah's and Idaho's Factory Representative

Utah-Idaho School Supply Co.

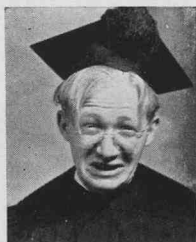
"Everything for Office and School

155 SOUTH STATE STREET

SALT LAKE CITY, UTAH

WE HAVE ENJOYED WORKING WITH YOU IN EDITING
THIS POLARIS

Your Negatives Are In Our Files Awaiting Your Re-orders



"BENNIE"

Degn & Brunson

Professors of Photography



"MAX"

139 North Main

Phone 311-J

LOGAN, UTAH

ANOTHER SUCCESSFUL SCHOOL YEAR!

Many Happy Remembrances with a Class Ring From

O. C. Tanner Company

UTAH'S LARGEST MANUFACTURERS OF CLASS JEWELRY

403 Atlas Building

Salt Lake City, Utah

A MARK OF DISTINCTION



Christianson's Shoe Dept.

Logan, Utah

LEVENS

The Store of

QUALITY — STYLE

PRICE

MEN'S and BOY'S
Complete Outfitters

SHOES and HOSE
For the Entire Family

Home of

RED CROSS SHOES

Logan, Utah

Compliments of

**Cache Valley
Electric**

LOGAN, UTAH

**Dealers in All Electrical
Appliances**

UTAH OIL REFINING CO.

STATIONS

Pep 88

Vico

ATLAS TIRES and ACCESSORIES

Drive in where there's
"Service with a Smile"

Cache Knits

LEAD THE FASHION PARADE

Knit suits and dresses of style and distinction
designed and manufactured by

Logan-Cache Knitting Mills

124-126 SOUTH MAIN

LOGAN, UTAH

Compliments of

**Anderson Lumber
Company**

SMITHFIELD, UTAH

The Best

in

Drug Store Merchandise

and

Soda Fountain Service

Van Drug Co.

H. O. VAN ORDEN, Mgr.

Smithfield, Utah

THE REXALL STORE

Winn's Confectionery

SMITHFIELD, UTAH

Dealers in

SUNFREZE

The Better ICE CREAM

D. W. Hess & Sons

Confections

LOGAN, UTAH



Union Knitting Mills Company

First West and Center Street

LOGAN, UTAH

Manufacturers of Harriet Raye Knit Dresses and Suits

WE TAILOR TO YOUR MEASUREMENTS

Styles Are the Very Latest — Workmanship Cannot be Excelled
Quality Superior

Do Not Fail to See This Wonderful Line
Now on Display

SPECIAL DISCOUNTS GIVEN TO STUDENTS

AGENTS

KELVINATOR REFRIGERATORS — WASHERS

Electric Ranges — Zenith Radios

Smithfield Implement Co.

Smithfield, Utah

Phone 15

Growth

IS A FUNDAMENTAL LAW—

WE RECOMMEND GROWING IN INDEPENDENCE,
PROSPERITY, AND SECURITY WITH THE GROWTH
OF A **BANK ACCOUNT.**

The Commercial National Bank

of Smithfield

Compliments of - - -

SMITHFIELD BRICK & TILE COMPANY

Manufacturers of

BUILDING BRICK
BUILDING and DRAIN TILE

Face Brick in Various Shades

PHONE 11

SMITHFIELD, UTAH

FRED AND MAX CAFE

THE MOST AND THE BEST FOR
THE LEAST

We Serve Meals Anywhere

For all kinds of sandwiches and
lunches see us.

Regular Dinners - - 35c

QUALITY plus SERVICE

Nivison Drugs

Richmond, Utah

PHONE 23

Agent for

Brown's Ice Cream
Sheaffer Fountain Pens

Rexall Remedies

THE COMPLETE STORES

- featuring -

Merchandise of Merit

Courteously Served

at

Competitive Prices

Theurer's Stores

RICHMOND - LEWISTON
PROVIDENCE

Strength of Character

Strength of character and high purpose make the honor graduate. On these qualities close banking relationships are based.

We look forward to numbering among our valued customers many of the young graduates of our North Cache High School in the distant future.

First Security Bank of Utah, N. A.

RICHMOND BRANCH

MEMBER OF FEDERAL DEPOSIT INSURANCE CORPORATION

CLOTHES FOR
ALL THE FAMILY

QUALITY

SERVICE

DEPENDABILITY

J. C. PENNEY

LOGAN, UTAH

SUCCESS IS STRAIGHT
AHEAD!

And this is the combination that will
open the door:

- 1—A broad general education.
- 2—The determination to succeed.
- 3—Thorough training in a reliable
business college.

You furnish the first two—we'll help
you to secure the third.

Write or call for information

L. D. S. Business College

70 NORTH MAIN STREET

Salt Lake City, Utah

**Gilt Edge
Flour Mills**

PHONE 90-W

Manufacturers of

GILT EDGE QUALITY FLOUR

"It Stands the Test"

WE DO GRIST WORK

All Kinds of Baby Chick Feed,
Poultry Supplies, Dairy Feed,
Chopping

Larsen & Birch

Wholesale

CANDY MANUFACTURERS

AND JOBBERS

Logan, Utah

Distinctive Printers

We Print

LETTERHEADS - ENVELOPES - STATEMENTS - CARDS
WEDDING STATIONERY - ETC.

CLARK & EARL

81 W. CENTER

Phone 50
BOX 510

LOGAN, UTAH

Compliments of



THE AMALGAMATED SUGAR CO.

Caspers ICE
CREAM

LOGAN HARDWARE CO.

Distributors for

BENNETT'S PURE PAINT



Distributors for

RAWLINGS
ATHLETIC EQUIPMENT

45 NORTH MAIN ST.

LOGAN, UTAH

— Perfect Swimming —

LOGANA PLUNGE

THE POOL THAT IS DRAINED
EVERY NIGHT



"Every Drop Chlorinated"

Armstrong Sporting Goods

Ogden, Utah

EVERY THING

for

EVERY SPORT

Wholesale and Retail

H. F. OLSEN

I. G. A.

Richmond's Quality

Food Store

Twenty-Three Years Reliable

Business

Compliments of

AUTREY BROS.

Engravers

Denver, Colorado

HIGH SCHOOL JEWELRY AND ANNOUNCEMENTS

YOU'LL DO BETTER WITH A CONN

All Conn instruments are easy to play. That's the outstanding feature which makes them first choice of the world's greatest artists. Beginners, too, find they learn faster on a Conn.



Sold Exclusively By

GLEN BROTHERS MUSIC CO.

OGDEN and SALT LAKE

TRAVEL BY U. I. C. AND SAVE

Commutation Books 1½ Cents Per Mile

Mileage Books 1½ Cents Per Mile

Special Sunday Excursion Fares 1 Cent Per Mile

The Utah Idaho Central Railroad Company

Philco Radios
Stewart-Warner Refrigerators
VAN PLUMBING & HEATING
JAY VAN ORDEN, Mgr.
LEWISTON, UTAH

DON'T FORGET TO MEET
YOUR FRIENDS
AT
HEBE'S PIG STAND
268 North Main Logan, Utah

SAY IT—
with a ROYAL PORTABLE
FROM
Geo. B. Everton
Typewriter Service
ALL MAKES
Sold, Rented and Repaired
176 North Main Phone 345
LOGAN, UTAH

SEE US FOR
SHEAFFER'S FOUNTAIN PENS
Ideal Graduation Gifts
Lewiston Drug Co.
Lewiston, Utah

**ORLO'S
CASH MARKET**
"Lewiston's Home Owned
Store"

QUALITY COUNTS
Conoco Gasoline - Germ Process Oil
Expert Service
BLAIR'S GARAGE
LEWISTON, UTAH



THE LAYOUT

Illustrations and type masses are made to harmonize in tangible form, to the editor's desire ✓ ✓ ✓



THE TYPE

Editors find satisfaction from a variety of type faces that add ably to their books ✓ ✓ ✓

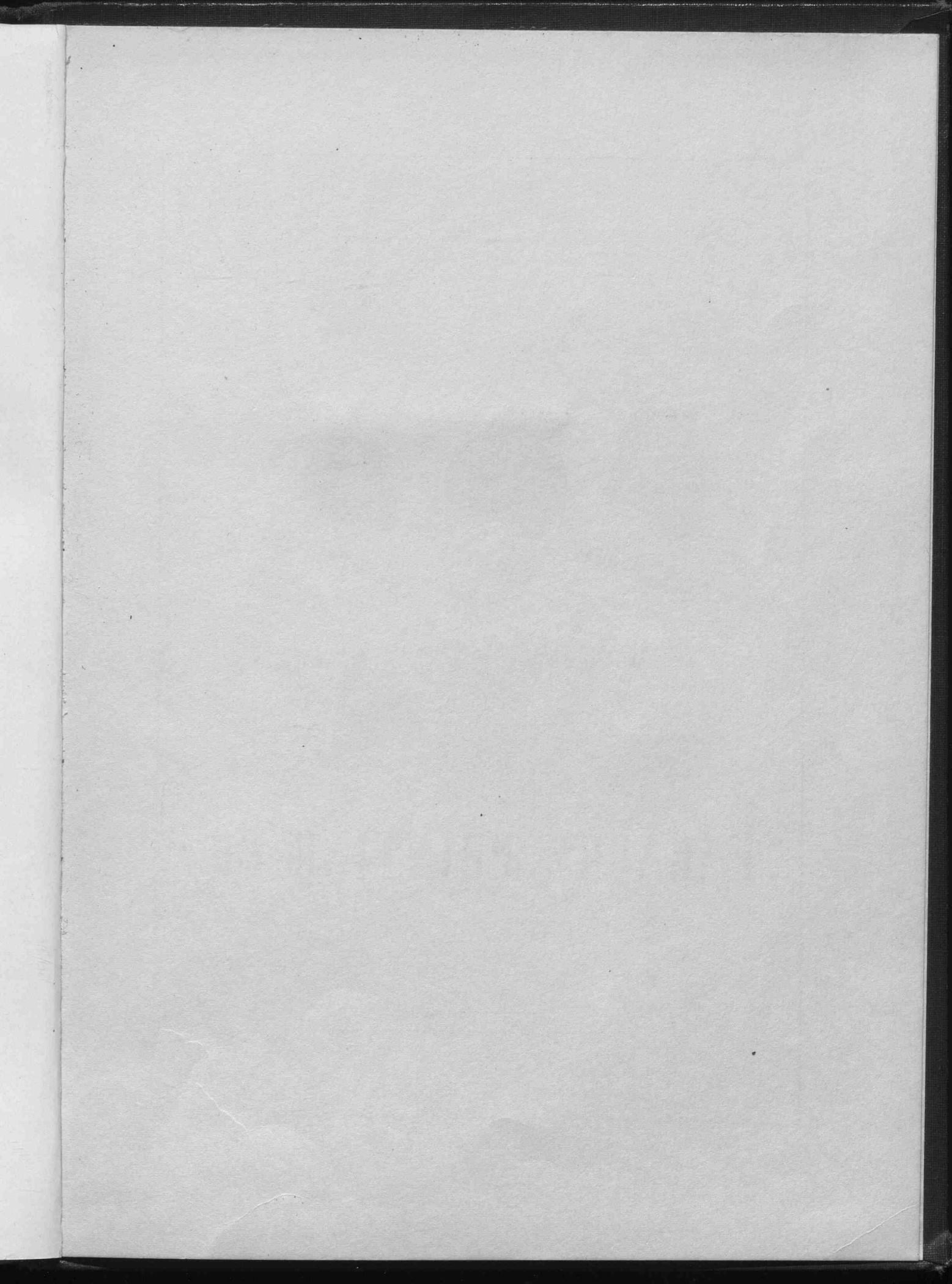


THE PRINTING

Master craftsmen with well selected equipment extend their best efforts and loyalty to particular editors ✓

PARAGON PRINTING CO.

SALT LAKE CITY, UTAH



4240

North Cache High School LIBRARY

1938



