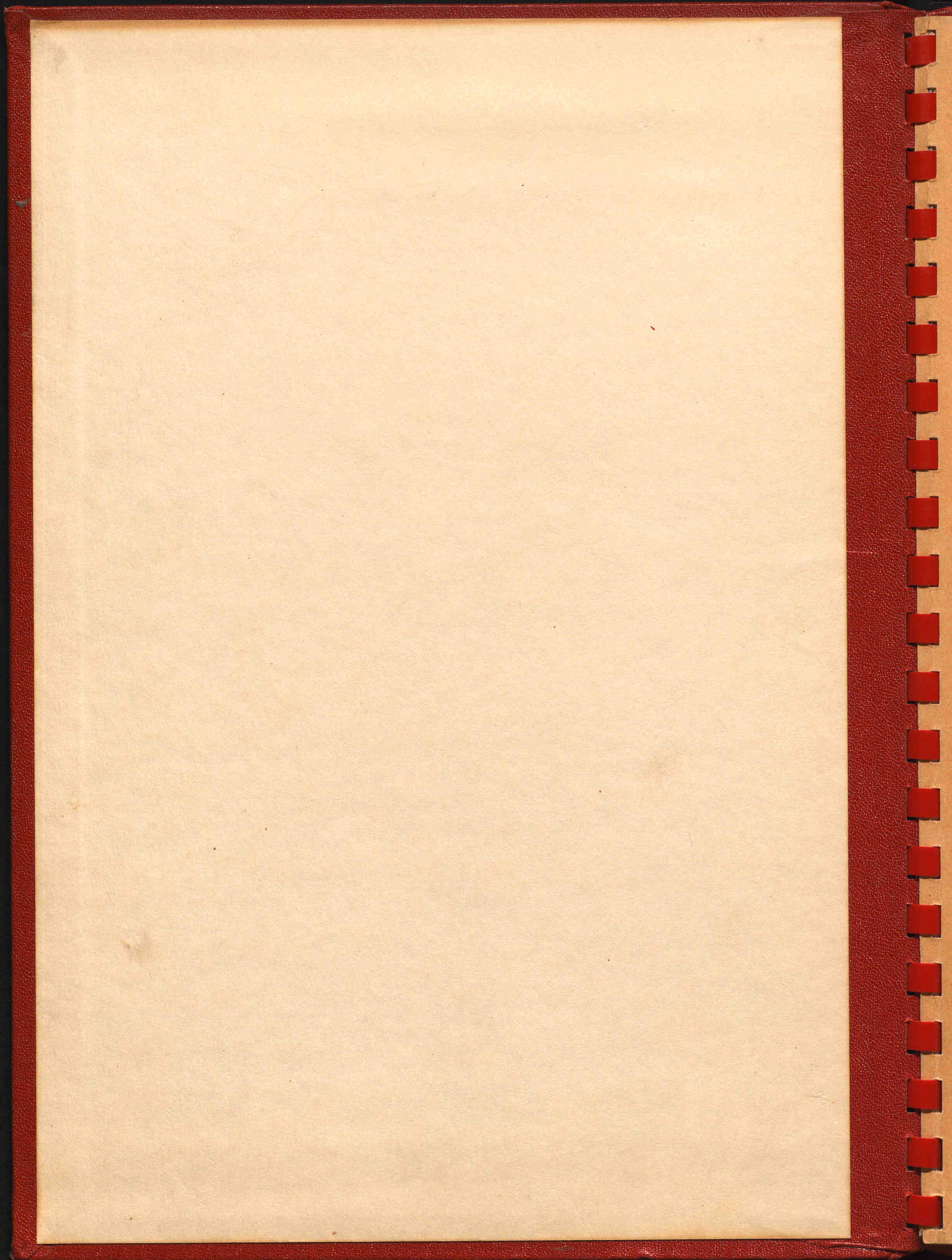
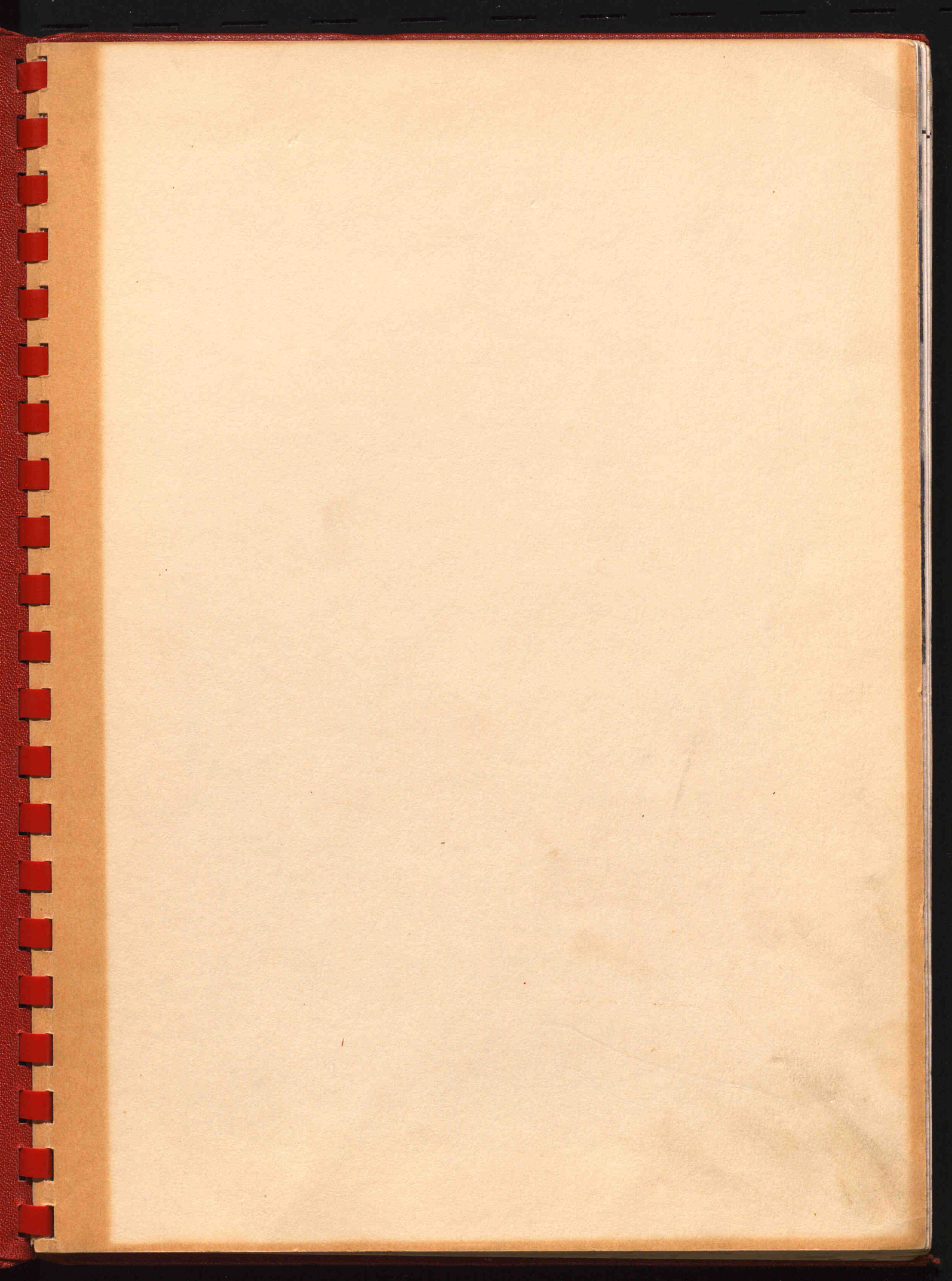


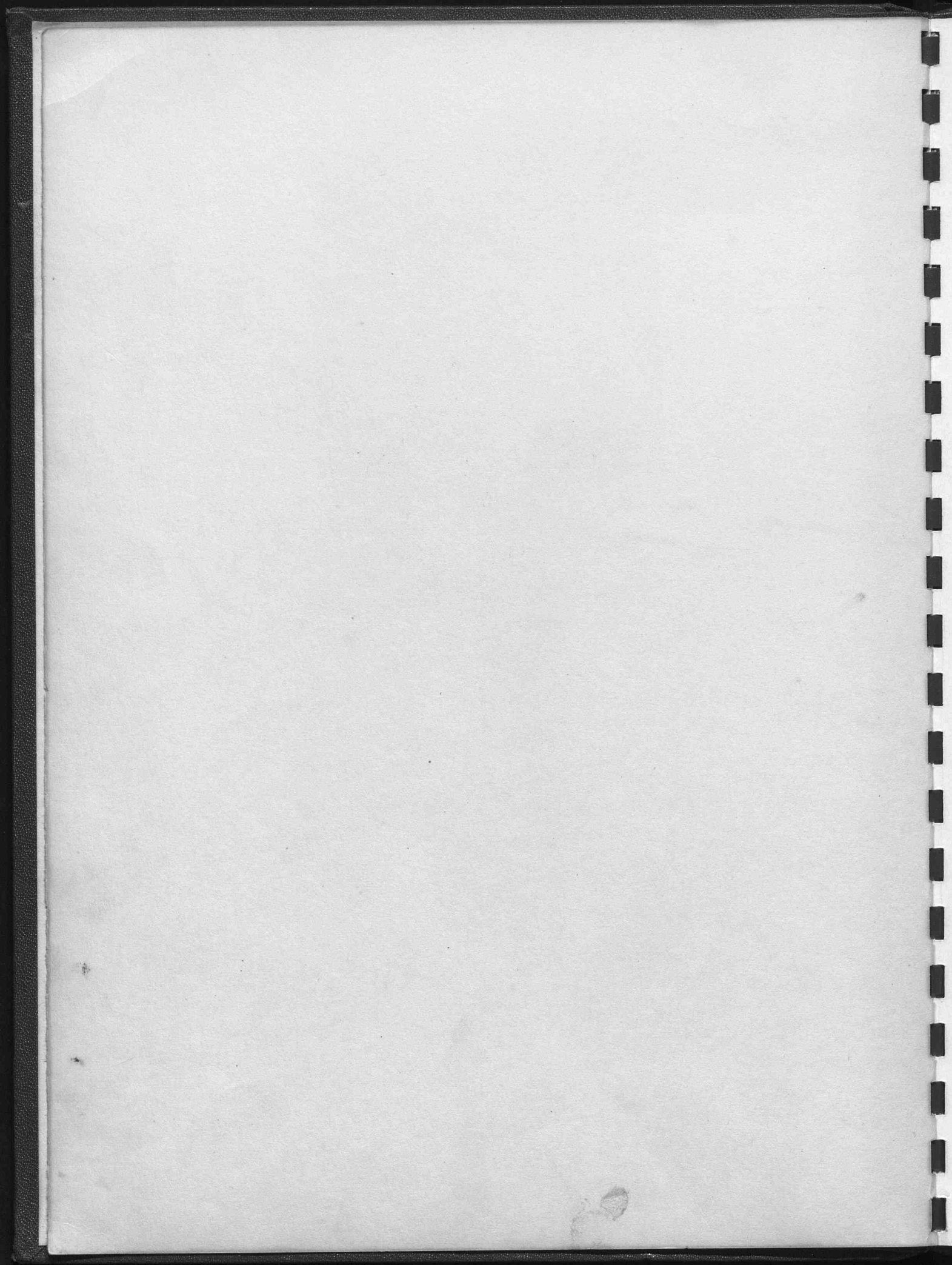


Polatis

TWENTY-THREE HUNDRED AND THIRTY-SEVEN







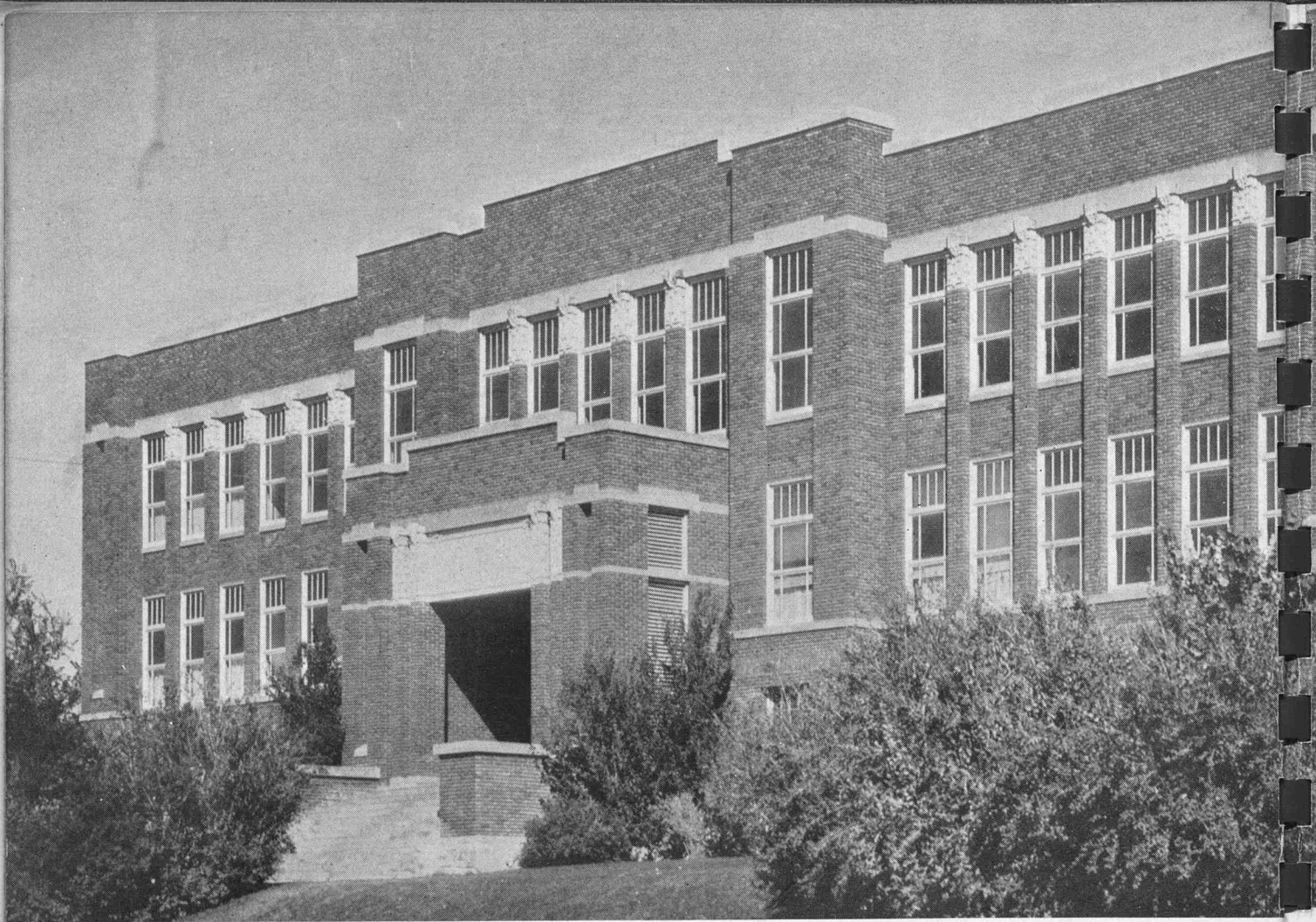


The
Nineteen
Hundred
Thirty-seven

Polaris

"The disgrace is not in falling, but
in failing to rise when you fall."

—Goldsmith



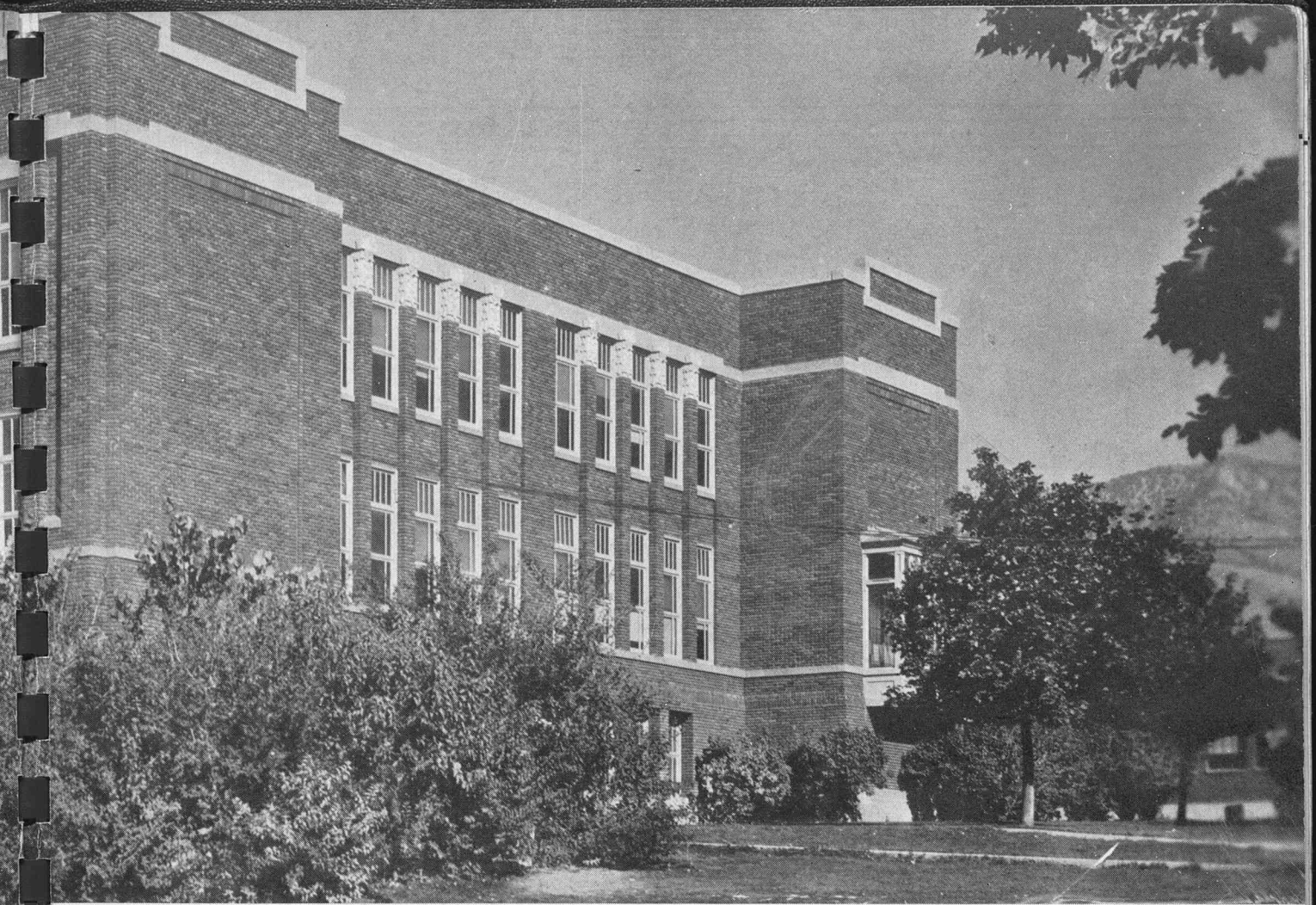
Foreword . . .

. . . Many goals have been reached and new friends have been made during our high school days; and now this year is completed . . . To many of us, these hours will be our last in an institution of learning . . . to others this is but the beginning in a phase of scholastic endeavor . . . where we may carry on in the quest of greater knowledge, and seek our places in the complexities of life . . . To record accurately the events of the past year is the aim of the 1937 'Polaris'.

CLEO CHRISTENSEN
Editor

MYRON SEAMONS
Business Manager

DALE VAN ORDEN
Business Manager



Dedication . . .

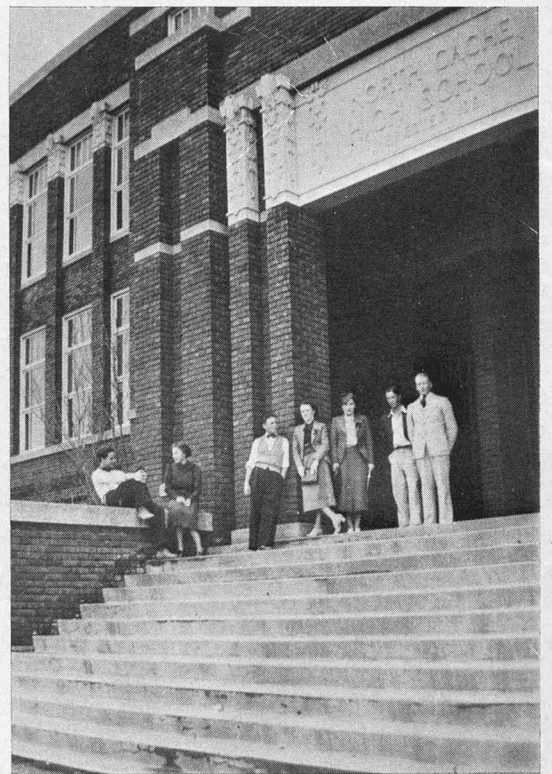
. . . To those who have sacrificed that their children might be educated; to our parents, who deserve much credit for the success of our school, we dedicate the nineteen hundred thirty-seven edition of the 'Polaris'.

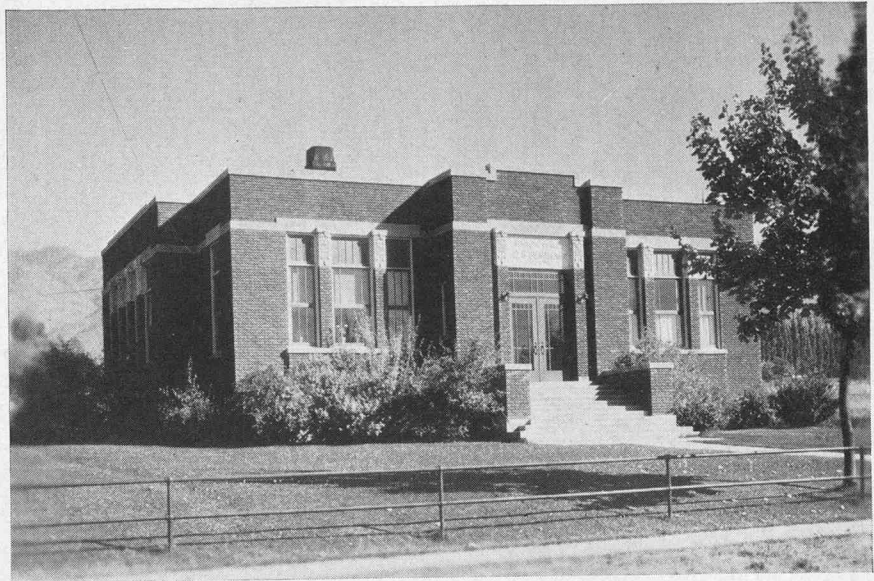
CONTENTS . . .

- Book one . . . ADMINISTRATION
- Book two . . . ORGANIZATIONS
- Book three . . . ACTIVITIES
- Book four . . . ATHLETICS



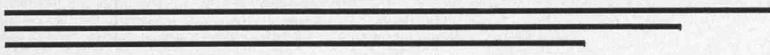
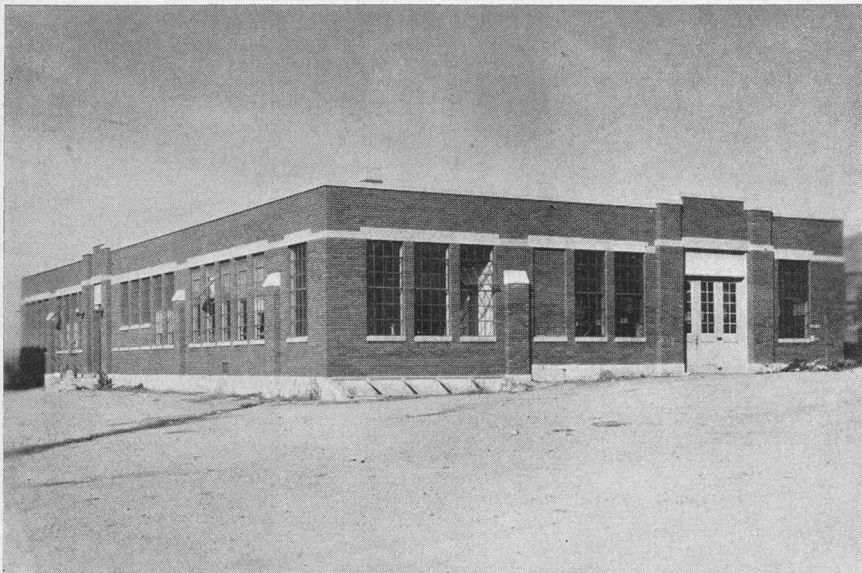
. . . North lawn . . . green grass, azure sky,
a cloud floating lazily by, and beautiful
shrubs . . . all add to the atmosphere of the
North Cache campus.





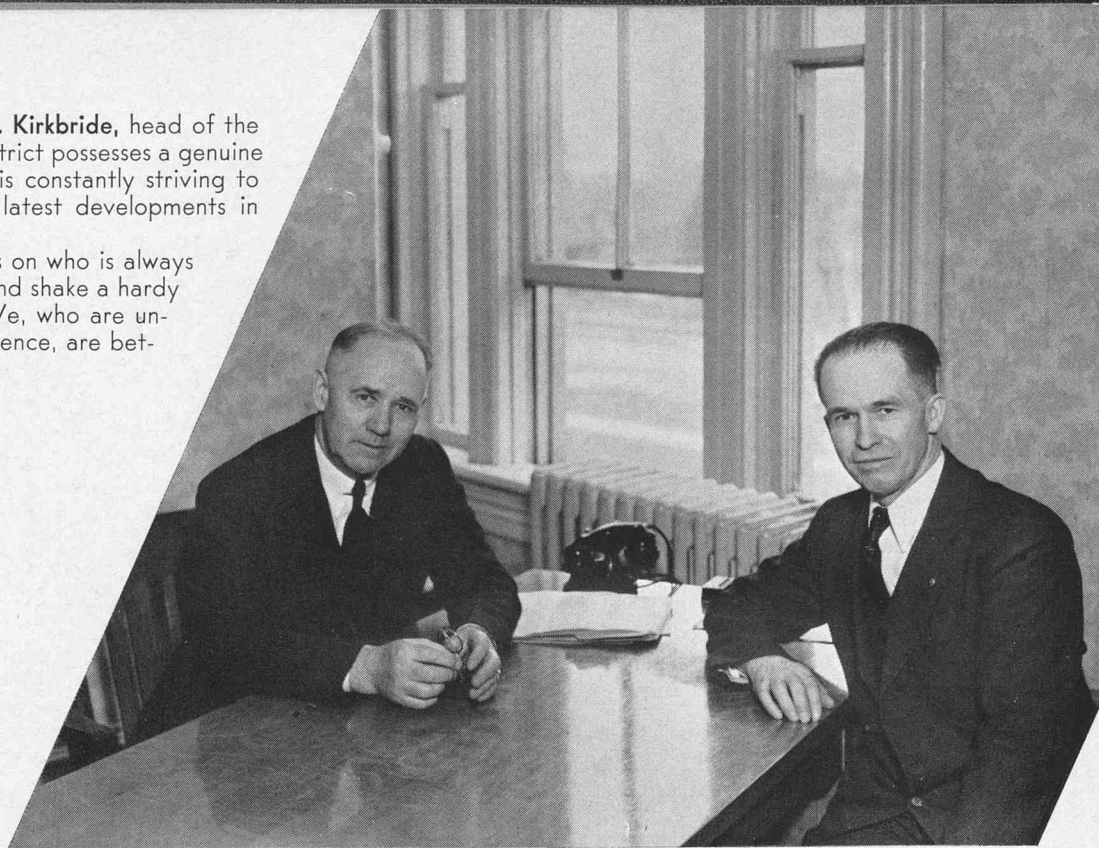
. . . L. D. S. Seminary

. . . Mechanic Arts Building



... Superintendent J. W. Kirkbride, head of the Cache County School District possesses a genuine love of learning . . . He is constantly striving to bring to our system the latest developments in the science of education.

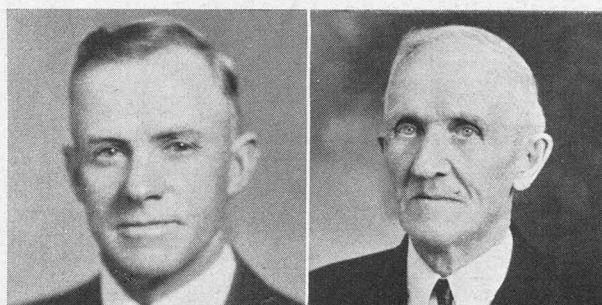
... Our superintendent is one who is always willing to recognize you and shake a hardy hand of friendship . . . We, who are under Supt. Kirkbride's influence, are better for having known him.



... In our position as students of North Cache High School we express our sincere admiration for the leader with whom we have the privilege of associating . . . **Principal Stoddard** . . . Each day of the school year new problems arise, situations confront us, advice is needed, all of which require intelligent and broad-minded leadership . . . He is always willing to help any student who may wish to seek his encouragement and advice . . . Mr. Stoddard is endowed with those qualities which inspire loyal followers and supporters . . . We are rich in his friendship.

Administration

School Board



Albert McCann

President C. F. Olsen

L. H. Allen

John J. Hendry

W. J. Loosle

- . FACULTY ADMINISTRATION
- . STUDENT GOVERNMENT
- . HONORARIES
- . CLASSES
 - .. Seniors
 - .. Juniors
 - .. Sophomores
 - .. Freshmen

Faculty Administration



E. B. Oleson
Social Science

E. M. VanOrden
Exact Science

J. H. Peterson
English

C. B. Johnson
Social Science

W. W. Perkins
English

Gertrude Bentley
Commercial

L. C. Smith
Biological Science

Heber Whiting
Bio. Science, Coach

M. R. Cooley
Exact Science

Amos Bair
Agriculture

Arta Larsen
Arts & Textiles

Edna Pedersen
English, Commercial

Alfrieda Olsen
Social Science

J. W. Pulsipher
Music

H. W. Wadsworth
Manual Arts
Metal Shop

Wynona Hanson
Physical Education

Ann Larsen
Domestic Science
Cafe

J. Whitman
Physical Education
Coach

Faye Sonne
Dramatics, English

LeGrand D. Spencer
Exact Science
German

Frank Raymond
English

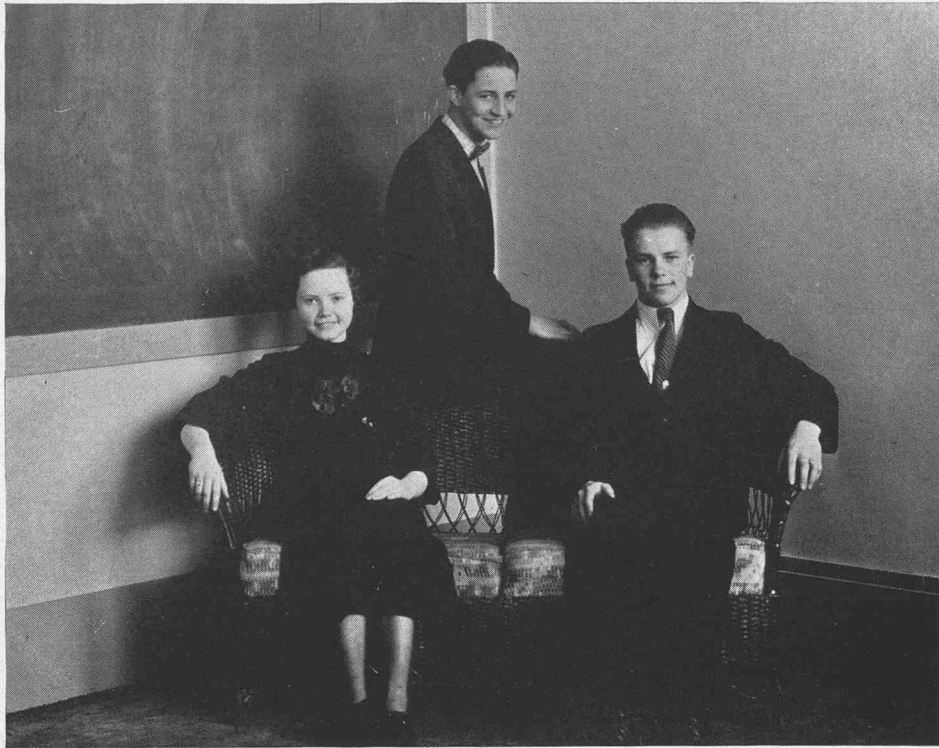
C. A. Hurren
Exact Science

C. B. Stoddard
English

Theola Merrill
Textiles

Aleda Tingey
Librarian

Elsie Lewis
Office Secretary



(Standing) Earl Winnergren . . . (sitting) Nada Cardon, Elmer Olsen

. . . Swept into office in May of 1936 by a substantial majority, **Earl Winnergren**, in return for his vote of student approval, undertook an active policy of the promotion of a greater student spirit and the presentation of more elaborate campus functions . . . the character day, the home room, the abolishing of painting of freshmen on initiation day, and orientation of the general public to activities of the high school. He was ably assisted by **Nada Cardon** as vice president, and **Elmer Olsen**, secretary.

Student Government



Left to right (standing): C. A. Hurren, M. R. Cooley, E. M. VanOrden, W. W. Perkins, A. W. Bair.
(Sitting): C. B. Johnson, Principal C. I. Stoddard, J. H. Peterson.

. . . Student Council

. . . Vigilant sponsoring of all important campus functions, and inter-class rivalries comprised their most important functions.



Left to right (sitting): Gertrude Bentley, J. W. Pulsipher, Faye Sonne, C. A. Hurren, Edna Pedersen.
(Standing): Nada Cardon, Randall Sorensen, Frances Rawlins.

. . . Faculty Room

. . . A novel camera angle accentuates the interior of North Cache's faculty room . . . discussions of school problems and social relations are some of the activities carried on in this room.

Executive Council . . .

. . . The Executive Council is comprised of a faculty member from every town if possible, having students attending the high school. The Council's aim is to direct, regulate and transact business in accord with the accepted policies of the high school.



Left to right (standing): Farris Hillyard, Garth Hansen, Richard Griffin, Randall Sorensen.
(Sitting): M. R. Cooley, Nada Cardon, Earl Winnergren, Elmer Olsen, Edna Pedersen.

Assembly Committee . . .

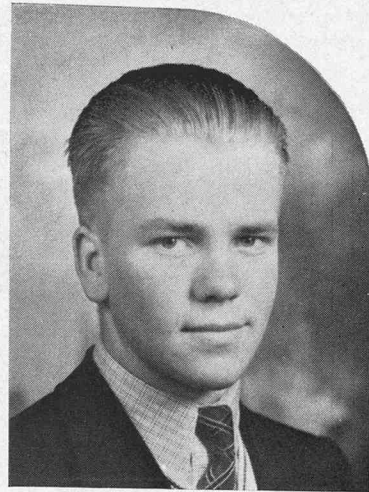
. . . Providing talent and arranging all programs for student body approval, the assembly committee accomplished commendable results throughout the entire school year.



HONORARIES



Maxine Balls



Elmer Olson

Honor Students . . .

. . . The ten students having highest scholastic rating are selected as honor students . . . Scholastic pins are awarded to the five students rating the highest average scholarship, while certificates are given to the five other students.

Citizenship . . .

. . . The Kiwanis Club of Smithfield gives an award each year to the outstanding student citizens, a boy and a girl. This award is based on scholarship, character, leadership, and service, as determined by extra curricular activities.

. . . The names of the winners for this year will be engraved on a plaque which was awarded by Kiwanis Club.



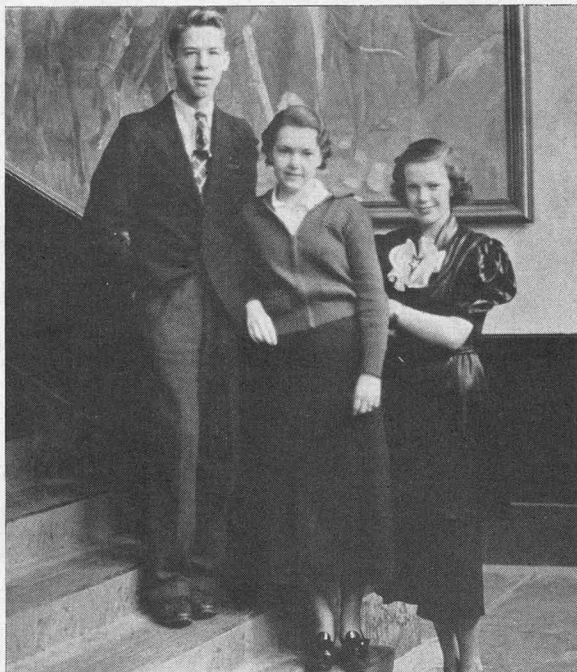
Irene Olsen
Elmer Olson

Gladys Berger
Ruby Johnson

Brenda Van Orden
Alice Simmonds

Joy Roskelley
Sterling Nelson

Bernell Winn
Anna Veibell



Randall Sorenson

Helen Miles

Frances Rawlins

Senior Officers . .

. . . When the school year 1936-37 began it was hard to believe that we were seniors, the leading class . . . We started, however, full of ambition, united in our desire and willingness to work . . . to plunge forward . . . We are now about to go forth into the world more capable to accomplish the tasks confronting us because of the ideals and training of this, our school, and we hope that in some small way the school may be better for our having been in it.

. . . The traditional gift to the high school was a track and bleachers.

SENIORS

ARLENE GRIFFIN (Newton)

Pep Club 1-2-3; Band 3; Song Leader 1-2-3-4; La Senia Club 4; Debate Club 3; School Banner Carrier 4.

STERLING NELSON (Smithfield)

Booster Club 2-3-4; Debating Club 3; Booster Club President 4; Tennis Club 3; Rally Committee Chairman 4; Football 4; Track 3-4; "A" Honor Roll.

ALICE SIMMONDS (Cornish)

Opera 1-2-3-4; Pep Club 2; Girls League Soph. Rep. 2; Home Ec. Club 3; Commercial Club Vice Pres. 4; La Senia Club Pres. 4; Rally Com. 4; "A" Honor Roll.

DOUGLAS HENDRICKS (Richmond)

F. F. A. 1-2-3-4.

BONNIE MUNK (Benson)

Home Ec. 2-3-4; School Banner Carrier 4.

VERN HASLAM (Lewiston)

Intramural Basbetball 1; Booster Club 4.

VERYL WEBB (Richmond)

Pep Club 2; Home Ec. 2-3; Commercial Club 2-3; Home Ec. Vice Pres. 4; School Orchestra 1-2-3-4; La Senia Club 4.

DONALD WILLIAMS (Cove)

German Club 3; Dramatic Club 4; Army Air Corps.

LLEWELLYN GITTENS (Smithfield)

Hobby Club 4; Beno Club 3.

DOROTHY SPACKMAN (Lewiston)

Home Ec. Club 4; Beno Club 3.

VELDA HODGES (Trenton)

School Orchestra 3-4; Beno Club 3-4

IDA MONROE (Smithfield)

Pep Club 2-3; Drama 3; Dramatic Club 3-4.

ARMINA JONAS (Richmond)

Beno Club 3-4.

LYLE SAXTON (Smithfield)

Tennis Club 4; Beno Club 3.

GLENNA SEAMONS (Hyde Park)

Beno Club 3-4.

DEAN HICKEN (Richmond)

Tennis Club 1-2-3-4; Tennis Team 3-4; Johnson Medal 3.

CLEONE GUNNELL (Huntington Park, Cal.)

Pep Club 2-3; Opera 2-3; La Senia 4; Tennis Club 3.

ASAE M. BUTTARS (Cornish)

Intramural Basketball 1-2-3-4; Booster Club 4; Track 3-4.

AFTON McMURDIE (Richmond)

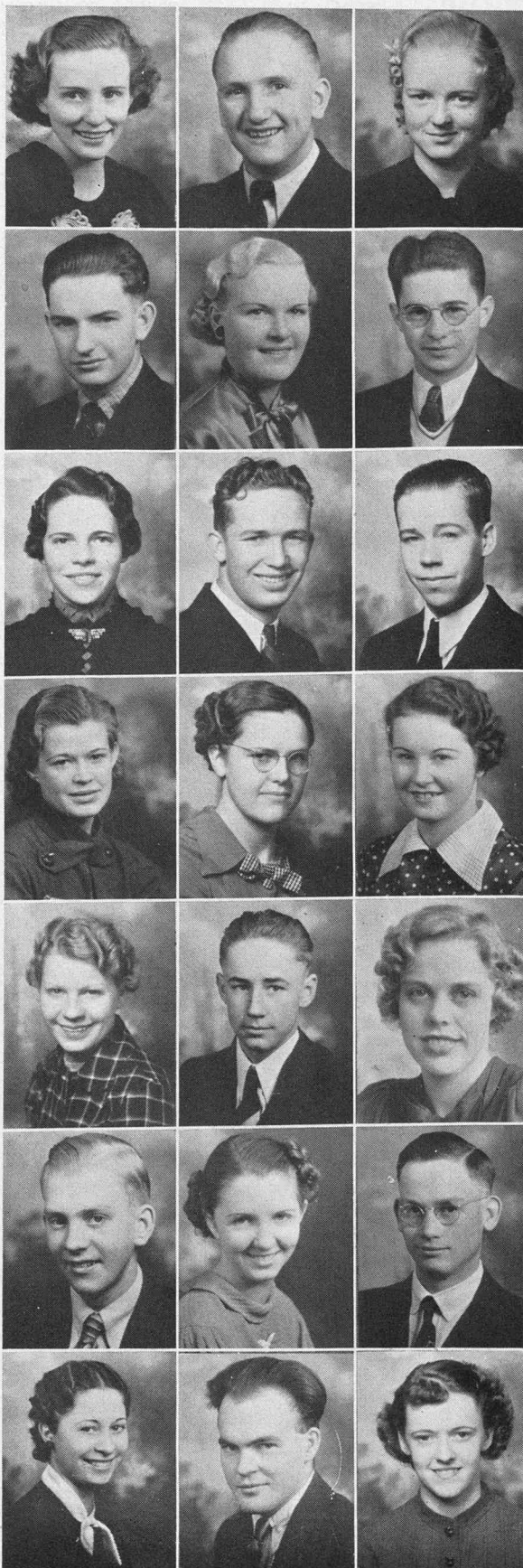
Pep Club 2-3; Beno Club 4.

KEN TURNER (Smithfield)

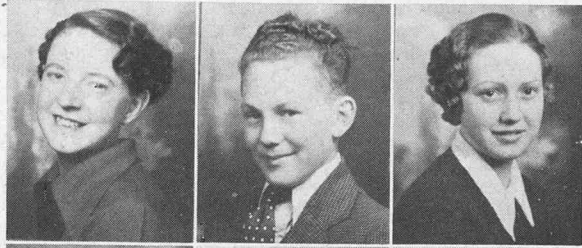
Beno Club 3-4.

JENNESS FULKERSON (Smithfield)

Pep Club 2; Opera 2-3-4; School Banner Carrier 3; Commercial Club 4; Commercial Club President 3; Commercial Club Secretary 2.



SENIORS



DELVA EWING (Smithfield)
Girls' League Secretary 4; Opera 2; Commercial Club 3; La Senia Club Vice President 4; School Banner Carrier 4.

KAY WAITE (Smithfield)
Beno Club 3-4.

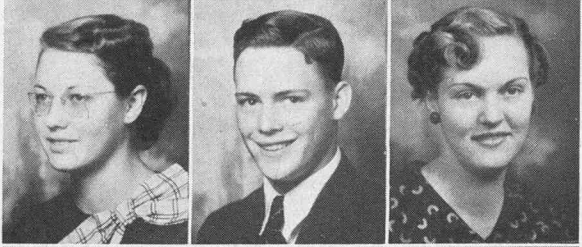
CELIA BALLS (Hyde Park)
Pep Club 2; Girls' Athletic Club 2-3; Girls' League Junior Rep. 4; Girls' Athletic Club Pres. 4; La Senia Club 4; Commercial Club 2-3; Home Ec. Club 3-4.



DEAN RICH (Smithfield)
Basketball Captain 4; Beno Club 3-4; Basketball 3-4.

MARRIETT TARBET (Smithfield)
Home Ec. Club 4; Pep Club 2; Commercial Club 2; School Orchestra 4; Band 2-3-4.

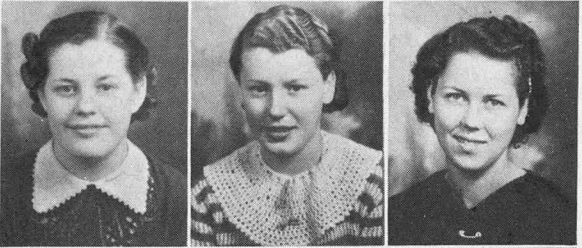
LEWIS SPARKS (Newton)
Beno Club 3-4; Intramural Basketball 4.



VENNA EGBERT (Smithfield)
Opera 2-4; Pep Club 2; Commercial Club Sec. 3; School Banner Carrier 3; Band Sponsor 4; Home Ec. Club 4.

JAMES LAST (Lewiston)
F. F. A. 1; Commercial Club 3; Hand Book Staff 4; Commercial Club Pres. 4.

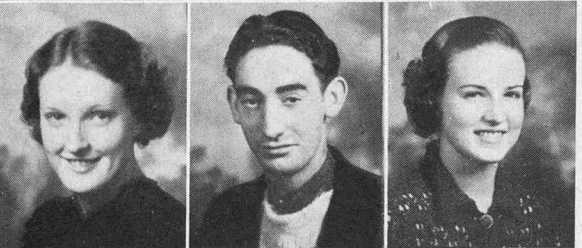
BARBARA ELWOOD (Cornish)
Home Ec. Club 4; Beno Club 3.



JUNE BERGESON (Lewiston)
Home Ec. Club 3; Home Ec. Club Vice Pres. 2; Dramatic Club 3; Dramatic Club Sec. 4.

ADELE BEUTLER (Benson)
Opera 1; School Orchestra 3-4; Beno Club 3-4.

VIOLET JOHNSON (Richmond)
Band 2-3-4; Girls' Athletic Club 4; Pep Club 1; Beno Club 3.



MAXINE BALL (Richmond)
Opera 1-2-3; Debating Club 2-3; School Debating Team 1-2-3-4; Debating Club Pres. 4; Pep Club 3; Commercial Club 2; La Senia Club Sec. 4; German Club 2-3-4; Citizenship Award.

DELL GRIFFITHS (Clarkston)
Beno Club 3-4.

MAXINE PETERSON (Benson)
Dramatic Club 4; Beno Club 3.



GORDON WEBB (Richmond)
Freshman Class Pres. 1; Student Body Council 1; Booster Club 1-2-3-4; Booster Club Sec. 4; Football 4.

GLENDA BINGHAM (Cornish)
Opera 1; Pep Club 2; Dramatic Club 3-4; Drama 4.

EARL HANCEY (Newton)
Opera 1; Tennis Club 4; Beno Club 3.



ORTEL CHRISTENSEN (Newton)
Pep Club 1; Home Ec. Club 2-3-4; Pep Club Secretary 2; Opera 2; Junior Prom Committee 2; German Club 4; Traveling Assembly 1.

QUENTIN PEART (Richmond)
F. F. A. 1-2-3-4; F. F. A. Judging Team 4.

AVON HYDE (Hyde Park)
Home Ec. Club 2-3-4; Commercial Club 2-3; Girls' Athletic Club 2-3-4.

SENIORS

WANDA CORBETT (Smithfield)
Beno Club 3-4.

MAX BERGESON (Cornish)
F. F. A. 1; Junior Class Pres. 3; Beno Club 3-4;
Boys' League Sec. 4; Football 3-4; Track 3-4.

CLEO CHRISTENSEN (Newton)
Band 1-2-3-4; Freshman Class Sec. 1; Girls' League
Freshman Rep. 1; Traveling Assembly 1-3; Pep Club
1; Debate Club Vice Pres. 2; Opera 2-3-4; Assembly
Committee 2-3; Prom Committee 2; Debating Club
Pres. 3; Pep Club Vice Pres. 3; Assistant Drum Major
3; School Debating Team 3-4; School Orchestra 3;
Drum Major 4; Home Ec. Club 4; Debating Club 4;
Polaris Editor 4; Dramatic Club 4; Com. Club 4;
Won Popularity Contest 4.

ADRIAN THOMAS (Richmond)
Opera 2-3-4; Band 1-2-3-4; Beno Club 3-4.

ADA THOMAS (Richmond)
Opera 1-2-3-4; Band 2-3; Commercial Club 3; Beno
Club 4.

JOE ALLEN (Cove)
Cheer Leader 3-4; Booster Club 3-4; German Club
4; Dramatic Club 4; Intramural Basketball 1-2; Opera
3; Drama 4.

CORA BOWMAN (Lewiston)
Pep Club 1; Opera 1-4; Pep Club Vice Pres. 2;
Home Ec. Club 4; Opera 2-3-4; Beno Club 3.

JACK THOMPSON (Clarkston)
F. F. A. 2; Beno Club 3-4.

BERNELL WINN (Smithfield)
Dramatic Club 2-4; Debating Club 2; Commercial
Club 2; Dramatic Club Sec. 3; School Contest Co.
Winner 3; "A" Honor Roll.

MYRTLE ROBINSON (Lewiston)
Beno Club 3-4.

LA RUE WESTOVER (Lewiston)
Beno Club 3-4.

MAXINE ESKELSON (Cove)
Opera 1-3; Pep Club 3; Beno Club 4.

RUBY JOHNSON (Trenton)
Dramatic Club 3; Dramatic Club Vice Pres. 4; "A"
Honor Roll.

GERALD BUTLER (Trenton)
Beno Club 3-4; Opera 4.

IRENE OLSEN (Smithfield)
Debating Club 2-3; School Debating Team 2-3-4;
Debating Club Sec. 4; "A" Honor Roll.

VAUGHAN RICHARDSON (Smithfield)
Beno Club 3-4.

ANNA VEIBELL (Cornish)
Pep Club 2; Commercial Club 2-3-4; La Senia Club
4; Hand Book Staff 4; "A" Honor Roll.

ROBERT WOOLF (Hyde Park)
Boys' League Vice Pres. 4; Football 4; Track 3-4;
Beno Club Sec. 4.

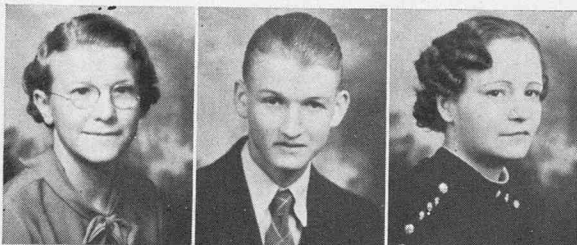
ELSIE GODFREY (Clarkston)
Opera 1-4; Beno Club 3-4.

PAUL TAGGART (Lewiston)
Booster Club 1-2; Hobby Club Pres. 4.

ADA JOHNSON (Richmond)
Opera 3; Beno Club 3-4.



SENIORS



BRENDA VAN ORDEN (Smithfield)
Pep Club 2; Debating Club 2; Dramatic Club 2-3;
Commercial Club 2; Com. Club Sec. 3; La Senia
Club 4; School Orchestra 2-3; "A" Honor Roll.

LENNOX CHAMBERS (Smithfield)
F. F. A. 2-3-4.

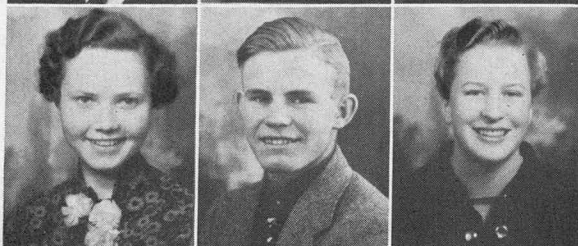
NORMA BURT (Clarkston)
Opera 4; Beno Club 3-4.



EARL WINNERGREN (Newton)
Band 1-2-3-4; Tennis Club 4; Booster Club 4; Drama
4; Student Body Counsel 4; Student Body Pres. 4;
Beno Club 3.

ALETHEA REEDER (Cornish)
Opera 1; Pep Club 2; Commercial Club 4; La Senia
Club 4; German Club Sec. 3-4.

RONALD BUTTARS (Clarkston)
Opera 1-2-3; Beno Club 3-4.



NADA CARDON (Benson)
Debating Club 2; Dramatic Club 2-3-4; Pep Club 2;
Pep Club Pres. 3; Opera 3; Student Body Vice-Pres.
4; Student Body Council 4; Assembly Committee 4;
La Senia Club 4; Commercial Club 4.

BOB HOGAN (Lewiston)
Drama 2; Dramatic Club 2; Beno Club 3-4.

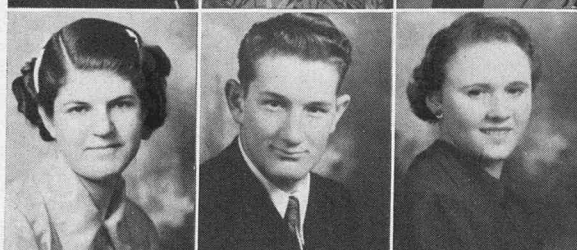
MARIE JOHNSON (Richmond)
Band 1-2; Pep Club 3; Girls' Athletic Club 4.



LARAE CROCKETT (Richmond)
Pep Club 1-3; La Senia Club 4; Commercial Club
2-3; Home Ec. Club 2-3; Home Ec. Club Pres. 4;
Opera 1-3.

BETTY CARDON (Trenton)
Beno Club 3-4.

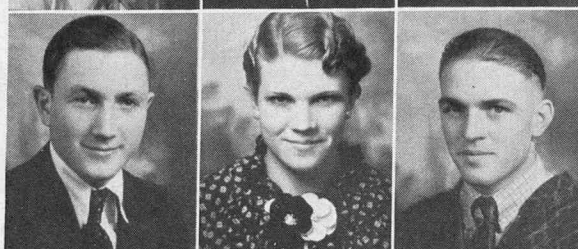
MARY WHEELER (Trenton)
Pep Club 2-3; Opera 1-4; Dramatic Club 4; German
Club 4; Hobby Club 4.



THELMA WHEELER (Lewiston)
Home Ec. Club 4; Beno Club 3.

DEE SHEPARD (Cove)
Opera 3-4; F. F. A. 1.

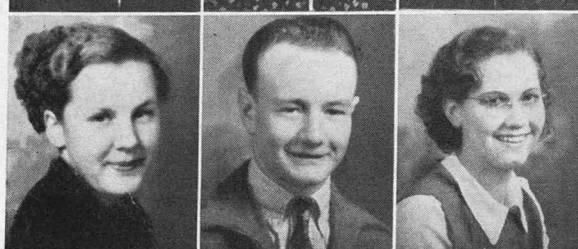
CLEONE TRIPP (Richmond)
Pep Club 1; Commercial Club 2.



HOWARD MCGEE (Lewiston)
Commercial Club 2; Cross Country 2.

DOROTHY PITCHER (Smithfield)
Beno Club 3; German Club 4; Commercial Club 4.

GRANT COOLEY (Newton)
Band 1-2-3-4; Intramural Basketball 4; Beno Club 3-4.



MELBA CHRISTENSEN (Richmond)
Junior Class Vice Pres 3; German Club Vice Pres. 3;
Pep Club 3; German Club Pres. 4; La Senia Club 4.

AFTON ORCHARD (Lewiston)
Intramural Basketball 3; Beno Club 3-4.

ENID SMITH (Smithfield)
Pep Club 2; Girls' Athletics 3; Home Ec. Club 4;
Opera 2-3-4.

SENIORS

LAURA MACK (Smithfield)
Pep Club 2; Opera 2-3; Commercial Club 2; Beno Club 4.

IRA JARDINE (Clarkston)
Beno Club 3-4; Basketball 4.

DORA PETERSON (Benson)
Commercial Club 2-3-4; Pep Club 3; La Senia Club 4.

SYDNEY KENT (Logan)
F. F. A. 1-2-3-4; Debating Club 2; Norcachian Business Manager 4; German Club Vice Pres. 4; Booster Club 4; Commercial Club 2; Tennis Club 4.

JOY ROSKELLEY (Smithfield)
Home Ec. Club 2-3; Pep Club 3; Norcachian Editor 4; "A" Honor Roll

DUANE GRIFFIN (Newton)
Band 3-4; Beno Club 3-4.

MARIAN PHILLIPS (Smithfield)
Commercial Club 2; Home Ec. Club 3-4.

RALPH DUCE (Hyde Park)
Beno Club 3-4.

VERLYE ALLEN (Benson)
Pep Club 2; Commercial Club 2-3-4.

MARIE ALLER (Lewiston)
Commercial Club 3-4.

MILDRED ASHCROFT (Hyde Park)
Home Ec. Club 3-4.

ELMYRRA ACKLEY (Smithfield)
Beno Club 3-4.

CONNIE HURREN (Hyde Park)
Pep Club 2; Commercial Club 2-4; Pep Club Sec. 3; Girls' League Senior Rep. 4.

DALE HENDRICKS (Richmond)
F. F. A. 1; Intramural Basketball 1-2-3-4; Beno Club 3-4; Track 3-4.

CARMA HENDRICKS (Lewiston)
Beno Club 3-4.

FORD SORENSON (Richmond)
Intramural Basketball 2-3; F. F. A. 1-2-3-4.

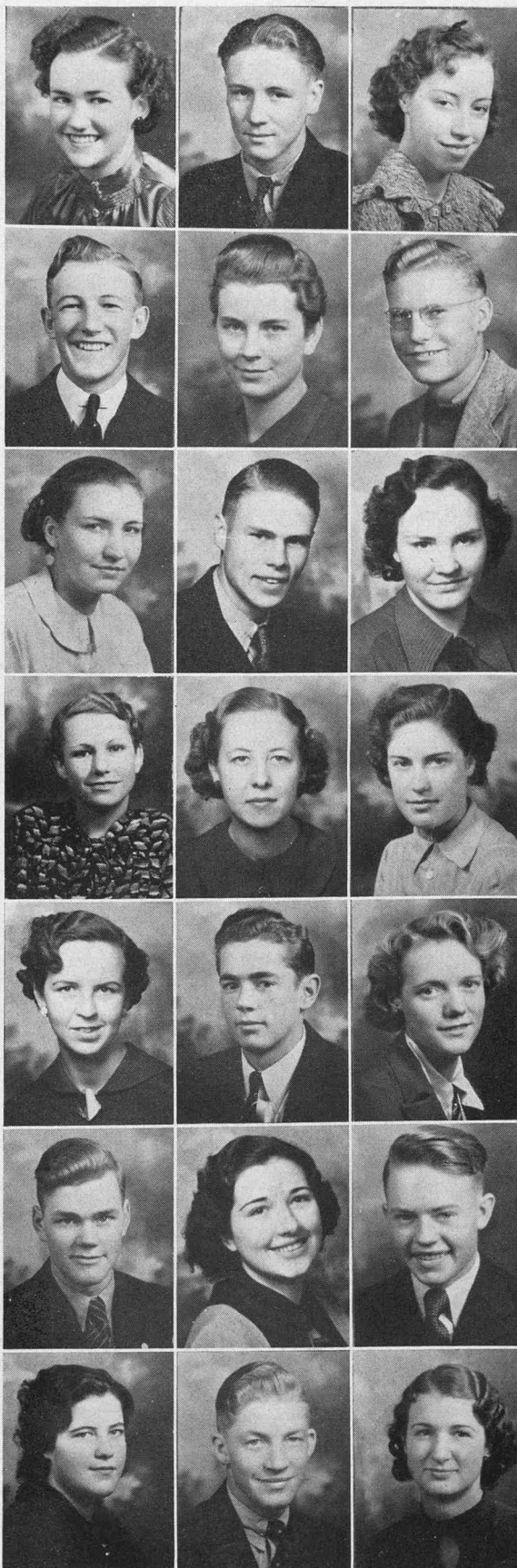
GLADYS BERGER (Benson)
Dramatic Club 1-2; Beno Club 3-4; "A" Honor Roll.

KENNETH BALLARD (Benson)
Beno Club 3-4.

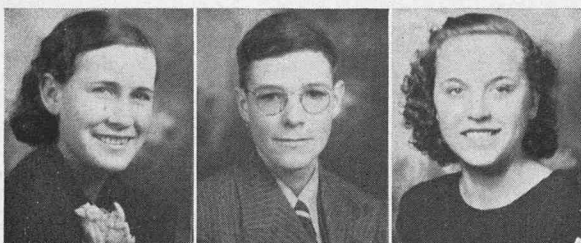
JULIA GRIFFIN (Clarkston)
Beno Club 3-4.

MELVIN VAN NOY (Richmond)
F. F. A. 4; Intramural Basketball 1-3; Beno Club 3; Football 4; Track 4.

ALICE ASTON (Smithfield)
Beno Club 3-4.



SENIORS



LILLIE SAUNDERS (Benson)
Beno Club 3; La Senia Club 4; Opera 2.

LEE WAITE (Hyde Park)
Beno Club 3-4.

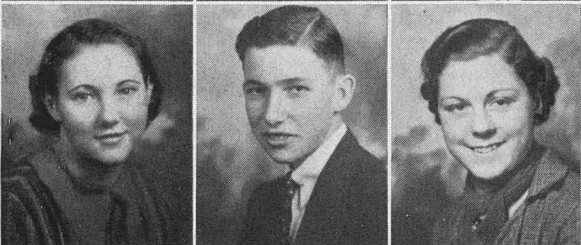
LETHA PETERSON (Newton)
Band 1-2-3; Pep Club 1; Beno Club 3-4.



LYNN RICHARDS (Smithfield)
Dramatic Club 2-3-4; Drama 4; Football 4.

MARY TRAVELLER (Smithfield)
Pep Club 2; Beno Club 3; La Senia Club 4.

ELMER OLSEN (Smithfield)
Debating Club 3-4; School Debating Team 2-3-4; Debating Club Vice Pres. 3; Dramatic Club 3-4; Student Body Council 4; Student Body Sec. 4; Citizenship Award; "A" Honor Roll.



LOIS RAVSTEN (Clarkston)
Beno Club 3-4.

ALVA BOMAN (Lewiston)
F. F. A. 1-2-3-4; Tennis Club 4.

MARGUERITE HENDRICKS (Richmond)
Pep Club 1; Band 1-2-3-4; Commercial Club 3-4.



THEDA BAIR (Richmond)
Beno Club 3-4.

IRENE ANDREW (Trenton)
Pep Club 3; Beno Club 4.

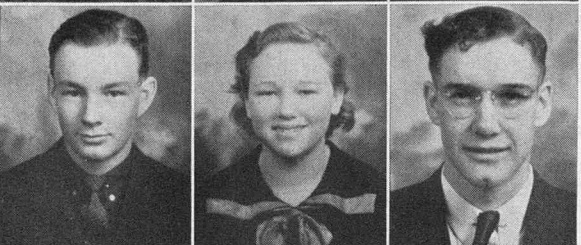
PHYLLIS REEDER (Hyde Park)
Commercial Club 3-4.



ELLA HALL (Smithfield)
Opera 2; Home Ec. Club 2; Beno Club 3.

WENDELL BOMAN (Lewiston)
Beno Club 3-4.

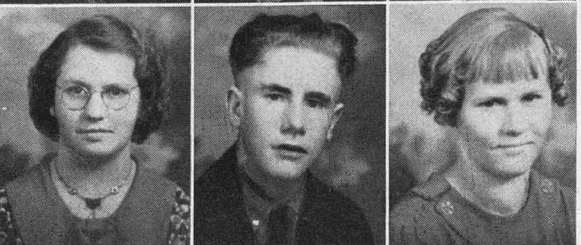
OPAL ALLRED (Trenton)
Pep Club 3; Hobby Club 4.



LOWELL GRIFFITHS (Clarkston)
Band 1-2-3-4; Beno Club 3-4.

DORA CHRISTENSEN (Clarkston)
Beno Club 3-4.

MYRON SEAMONS (Hyde Park)
Business Manager Polaris; Booster Club 1-2-3-4-5; Band 3-4-5; German Club 5; Dramatic Club 5; Opera 5; Orchestra 5.



STELLA BRIGHT (Richmond)
Beno Club 3-4; Band 2-3.

CECILE KENT (Lewiston)
F. F. A. 1-2-3-4; Hobby Club 4.

PHYLLIS HAWKINS (Lewiston)
Beno Club 3-4.

SENIORS

GLADE NILSON (Smithfield)
Pep Club 2; Commercial Club 2-4; Opera 3-4; Girls' Athletic Club 3.

OTTO PORTER (Newton)
Beno Club 3-4.

NELDA VanDYKE (Trenton)
Debating Club 2-3-4; School Debating Team 1-2;
Pep Club 2; German Club 3.

MARK JENKINS (Newton)
Beno Club 4.

LOILA TIDWELL (Smithfield)
Beno Club 3-4.

HAROLD GUTKE (Smithfield)
Booster Club 1-2-3-4; Football 1-2-3-4; Basketball
3-4; Track 2-3-4; Boys' League President 4; Football
Captain 4; Track Captain 4.

NAOMI GODFREY (Clarkston)
Beno Club 3-4.

RALPH WEEKS (Smithfield)
Beno Club 3-4.

MARIGENE LAMB (Hyde Park)
Home Ec. Club 2-3-4; Opera 2-4; Junior Class Sec-
retary 3; La Senia Club 4; Junior Prom Committee 3.

BETH PLOWMAN (Smithfield)
Pep Club 2-3; Dramatic Club 2-3; Beno Club 4.

EVELYN WEST (Smithfield)
Home Ec. Club 4; Girls' Athletic Club 2-3; Com-
mercial Club 2.

BLANCHE BINGHAM (Amalga)
Tennis Club 4; La Senia Club 4; Opera 2; Beno
Club 3.

LOIS REEDER (Smithfield)
Pep Club 2-3; La Senia Club 4.

LESTER THOMPSON (Clarkston)
Beno Club 3-4.

PEARL WHITE (Smithfield)
Beno Club 3-4.

JOE LARSON (Benson)
Beno Club 3-4.

DONNA WINN (Smithfield)
Debating Club 2-3; Pep Club 2; Commercial Club
3; Hobby Club 4; Tennis Club 4.

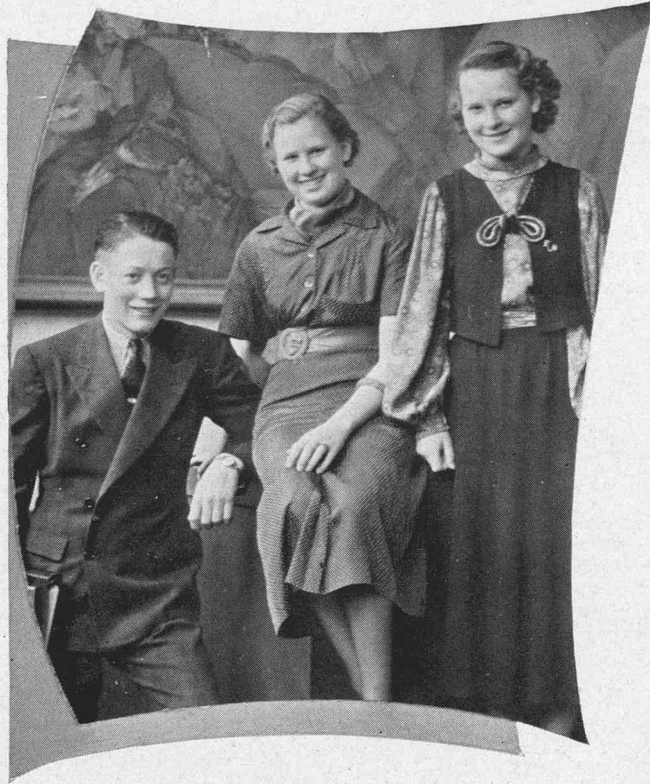
WENDELL BUTTARS (Lewiston)
Beno Club 3-4.

RICHARD DALLOF (Smithfield)
Beno Club 3-4.

LAEL BROWN (Trenton)
Beno Club 3-4; Opera 4.

PAUL STOCKS (Lewiston)
Opera 1-2-3-4; Drama 1; Dramatic Club 1.





Ethel Woodland

Janice Milligan

Guarth Hansen

Junior Officers...

JUNIORS

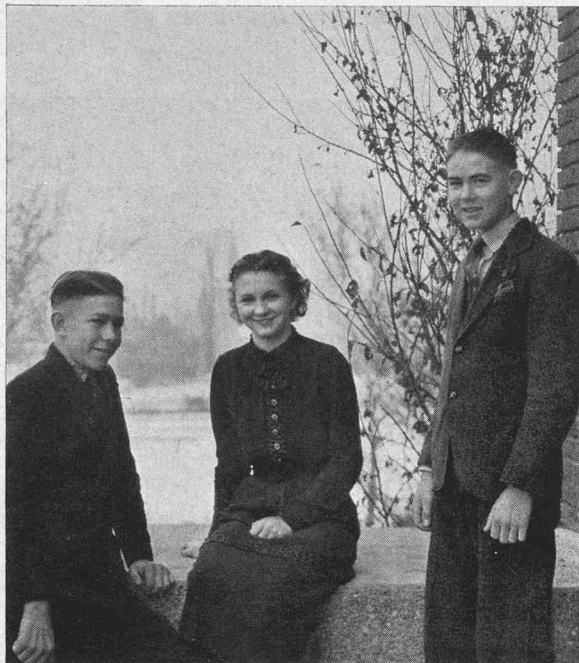


Arlene Allen
 Edris Allen
 Orris Mae Allen
 Margaret Anderson
 Shirley Mae Anderson
 Normand Andrew
 Mavis Astle
 Hazel Atkinson
 Sam Bailey
 Allen Baker
 Donna Ballard
 Quentin Balls
 Beth Bambrough
 Boyd Barnes
 Wallace Barney
 Farrell Bell
 Omar Bergeson
 Margaret Bernhisel
 Eunice Bingham
 Rachel Bingham
 Thurman Bingham
 Arnona Blanchard
 Suel Bodily
 Gennevie Bright
 Cleo Burt
 Dolores Butters
 Lee Butters
 Lois Butters
 Marjorie Caine
 Ruth Cantwell
 Herman Carlson
 Alice Carver
 Milton Carver
 Loa Chambers
 Herbert Christensen
 Sybil Christensen
 Afton Christoffersen
 Keith Clarke
 Lyle Cooley
 Marilyn Cottle
 Loyal Covey
 Nona Crookston
 Myrtle Dahle
 Ernest Ekenstam
 Margaret Ecklund
 Geneva Ellerman
 Dorothy Ellwood
 Eugene Ellwood

Beth Emmett
 Irel Eppich
 Ruth Erickson
 Rosalyn Facer
 Loa Farrell
 Alvin Ferre
 Norman Funk
 James Gittens
 Venord Gittens
 Ruth Godderidge
 Dora Godfrey
 Eulalia Godfrey
 Naomi Godfrey
 Kathleen Grant
 Metta Hale
 David Halgren
 Elda Hansen
 Guarth Hansen
 LaGene Harris
 Lorraine Harris
 Mary Haslam
 Gerald Hendricks
 Leone Hendricks
 Scott Hendricks
 Grace Hill
 Junior Hillyard
 Lyle Hoffman
 Brampton Hogan
 Athalie Howell
 Bernice Hurren
 Darrell Hyde
 Edward Hyden
 Garold Hyer
 Louise Hyer
 Kiyu Iwamoto
 Nedra Jackson
 Marie Jenkins
 Lloyd Jenson
 Byron Johnson
 Preston Johnson
 Lela Jones
 Lloyd Jones
 Marvin Jorgenson
 Clair Karren
 Boyd Karren
 Richard Kartchner
 Thelma King
 Robert Lapray

Glen Larsen
 Aliene Layne
 Bud Layne
 Dorothy Leavitt
 Arthur Lewis
 Clayton Lewis
 Lowell Lewis
 Bert Litz
 Stratford Loosle
 Budd Low
 Max Lower
 Glen Maisey
 Edward Markham
 Alice Mather
 Paul McKnight
 Carrie McQuarrie
 Douglas McQuarrie
 Julia Merrill
 Samuel Merrill
 Delbert Meyer
 Janice Milligan
 Bertha Monson
 Norman Morrison
 Dale Mortensen
 LoRee Munk
 Ven Myler
 Veral Nilson
 Eloise Noble
 Reynold Noble
 Connie Orvin
 Marjorie Parkinson
 Peggy Parkinson
 Bob Parsons
 Mervin Peterson
 Winn Peterson
 Mary Petterborg
 Harold Phillips
 Lew Pilkington
 Marcell Pitcher
 Warren Rasmussen
 Althea Rawlins
 Lindsay Rawlins
 Mary Rawlins
 Hal Read
 Anna Lou Rees
 Eulalia Reese
 Faye Reese
 LeRoy Rich

Vaughan Richardson
 Jessie Ricks
 Daie Rigby
 Val Rigby
 Jed Robinson
 Jeanne Roskelley
 Leon Roskelley
 Georgia Scott
 Elsie Seamons
 Jessie Seamons
 Mary L. Smith
 Maxine Smith
 Friday Smith
 Vernon Smith
 Wendell Smith
 Donna Sorenson
 Barbara South
 Harold Spackman
 Louise Spillman
 Roma Steed
 Mack Stoddard
 Verden Talbot
 Dee Tarbet
 Ada Taylor
 Cleah Telford
 Lola Thompson
 Reuben Thompson
 Rex Thompson
 Cherrille Thornley
 Budd Tout
 Gay Tripp
 Kathryn Tubbs
 Dale Van Orden
 Dee Van Orden
 Ethel Waite
 Rulon Waite
 Vance Waite
 Norma Wardell
 Vero Wardell
 Arvella Watts
 Bruce Webb
 Constance Webb
 Eldon Webb
 David Weeks
 Quentin West
 Alda Whitt
 Cleoria Wilcox
 Evelyn Wilding
 Ethel Woodland



Billy Rigby

Leora Gunnell

Ferris Hillyard

Sophomore Officers . .

. . . With a membership of 250 in the sophomore class, one of the largest in the history of North Cache High School, president **Ferris Hillyard**, assisted by **William Rigby** and **Leora Gunnell**, led his class high in achievement . . . Scholars, debators, athletes, and school leaders were developed.

. . . After three months of service Leora moved to California . . . She was succeeded by Ella Christofferson.

SOPHOMORES



Clyde Allred
Richard Allred
Nelson Anderson
Roland Anderson
Darlene Andrew
LaRene Archibald
Harry Baer
Shirley Baker
Gwen Ballard
NaDene Ballard
Lynn Balls
Ann Louise Barber
Delbert Bench
Neal Benson
Winston Benson
Garth Bergeson
Ted B. Bernhiesel
Marzella Bingham
Ross Bingham
Ardell Bodily
Ray L. Boman
Verden Boman
Daisy Brezoff
Clyde Bright
Athleen Brough
Duane Brown
LaFarr Brown
LaVere Brown
Nona Buck
Lars Buist
Ruby Burgess
Alta Bush
Varden Butler
Chester Butters
Iren Butters
Verl Butters
Mary Buxton
Emma Cardon
Bonnie Carlson
Eva Christensen
Wade Christensen
LaVar Christiansen
Merle Christiansen
Ella Christoffersen
Fenton Christoffersen
Douglas Clark
Paul Clark
Melba Clayton
Jack Coburn

Kelton Cook
Ralph Cooley
Vera Cottle
Drew Cunningham
Philip Cunningham
Arta Dahle
Gaye Dahle
Ray Dallof
Hazen Deppe
Lillie Dobbs
Venna Downs
Jeneal Duce
LaVon Duce
Cleo Egan
Roma Erickson
Virginia Fackrell
Gennevieve Farr
Ardith Farrell
Frank Federico
Harry L. Fern
Afton Fisher
Velva Franson
Carl Fuller
Beulah Gancheff
June Garner
Evan Godfrey
Ralph Godfrey
Wesley Goodsell
Clarence Goodwin
Duane Goodwin
Earl Griffin
Georgia Griffin
Harlow Griffin
Daniel Griffiths
Dorothy Griffiths
Weldon Griffiths
Leora Gunnell
I ois Gvllenskog
Alice Halgren
Florence Hamp
Bonita Hancey
Iva Hancey
I uana Hancey
Orlo Hancey
Eldon Hansen
Terry Hansen
Viva Hansen
Willia Rae Hansen
Emmeline Bea Harris

Doris Harwood
Alton Haslam
Carrell Hatch
Myron Hatch
Tarrell Hatch
Edith Hawkins
LaVon Hayes
Bern Hendershot
Bernard Hendricks
Naomi Hendricks
Robert Hill
Ferris Hillyard
Veral Hodges
LaVar Hoff
Katheryn Hoffman
Max Holt
Edith Hoppie
Sadie Hulse
Ruth Hyer
Blaine Jardine
James Jensen
Alyce Johnson
Itha Johnson
Marlin Johnson
Marva Johnson
Mae Jones
Dell Jorgensen
Dorothy Jorgensen
Lloyd Jorgensen
Norma Jorgensen
Morean Karren
Delmar Kartchner
Clayton Kearn
Cecil Kelsey
Merle Kingsford
Blaine Lamb
Barbara Larsen
Cyrel Larsen
Ila Larsen
Lorraine Larsen
Phyllis Larsen
Russell Larsen
Reed Lawrence
Lesley Lewis
Leon Litz
Doreen Loosle
Iillian Lowe
Betty Maisey
Delmar Matkin

Don McCombs
Ned McCracken
Luther McCracken
Mary McKnight
Iris Meikle
Clea Merrill
Edward Merrill
Evelyn Merrill
Gertrude Ann Merrill
Mildred Ann Merrill
Delbert Miles
Carol Miller
Charles Miller
Horace Milligan
Luella Moore
LaVoy Mortensen
Leon Murray
Frank Nielson
Blaine Nielson
Clinton Nielson
Geniel Nielson
Bob Nilson
Claude Nilson
NaDene Noble
Gordon Olson
Dorothy Parson
Bar Dee Peart
Paul Pederson
Blanche Perkes
Avis Peterson
Elwin Peterson
Verlo Peterson
Vernon Peterson
Rex Pilkington
Gladys Pitcher
Beatrice Pond
Katheryn Pond
Josie Poulsen
Laura Pullum
Earl Ransom
Verl Ransom
George Rasmussen
Alto Ravstun
Doris Reeder
Golda Reeder
Cecil E. Reese
Lynn Reese
Shirley Reese
Wilda Richards

Conrad Richardson
Stanley Richardson
Geneva Ricks
Thora Ricks
William Rigby
Lorin Rogers
Mable Rogers
Jack Roskelley
Juanita Roskelley
Darwin Salisbury
Dorothy Saunders
Annalene Seamons
Ervin Seamons
Evelyn P. Seamons
Ida Smith
LaMar Smith
Norval Smith
Marvin South
Clare Spackman
Helen Spackman
R. J. Spackman
Vaughan Spackman
Leone Sparks
Douglas Stephenson
Bara Stoddard
Phyllis Stoddard
Ruby Taylor
John T. Thain
John R. Thomas
Bernice Thompson
Fane Thompson
Vernal Thompson
Wendell Thompson
George Thornley, Jr.
Bessie Van Orden
Viola Veibel
Vilate Walte
Keith Wardell
Ernest Warren
Laura Webb
Nord Westover
Winona Wheeler
Jeanette White
Elda Whitlock
Lathael Winn
Vernice Winn
Louise Wiser
Philip Wiser
Hal Wright



Sidney Bingham

Gwendolyn Hogan

Richard Griffin

Freshmen Officers . .

. . . With a hard fought victory in the traditional sack rush, the freshmen class auspiciously opened its four year career at North Cache.

. . . This class has set many goals, upheld traditions, taken an active part in extra-curricular activities, and has attained a place in scholarship that will be difficult for future freshmen classes to surpass.

FRESHMEN



Verna Able
Beth Allen
Carl Anderson
Idella Anderson
Jess Anderson
LaVoy Anderson
Dean Andrew
Cleo Archibald
Keith Barker
Leah Benson
Rex Biggs
Paul Bingham
Sidney Bingham
Donald Blair
Elsa Bodily
Richard Boman
Dee Boodry
Billy Bowles
Jay Burbank
Velma Burt
Ted Buttars
Zara Bybee
Donald Carlson
Robert Choate
Maurice Christensen
Harold Christiansen
Eva Cole
Arthur Coley
Ellen Cook
Waldo Cook
Leland Cowles
Farr De'll Danford
Melvin Dyson
Vernon Elwood
Gladys Eppich
Everett Fackrell
Gene Funk
Donna Glover
Max Glover

Beth Godfrey
Blanche Godfrey
Donna Godfrey
Leon Godfrey
Rosalyn Godfrey
Leo Goodey
Shirley Goodey
Eva Goodsell
Dora Gregory
Leah Griffin
Richard Griffin
Earl Griffin
Ruth Griffin
Verna Able
Verl Gunter
Reed Hall
Melva Hamp
Alene Hansen
Howard Hansen
Ruby Harper
Josephine Harris
Zenda Harrison
Edna Hawkins
Ray Hayes
Joan Hendricks
Leona Hendricks
Reed Hendricks
Rhea Hicken
Grant Hoffman
Gwendolyn Hogan
Ked Hogan
Wade Howell
Roma Hurren
Rula Hurren
Glenna Hyde
Lydia Hyer
Wilma Hyer
LaRene Jardine
Maxine Jenkins

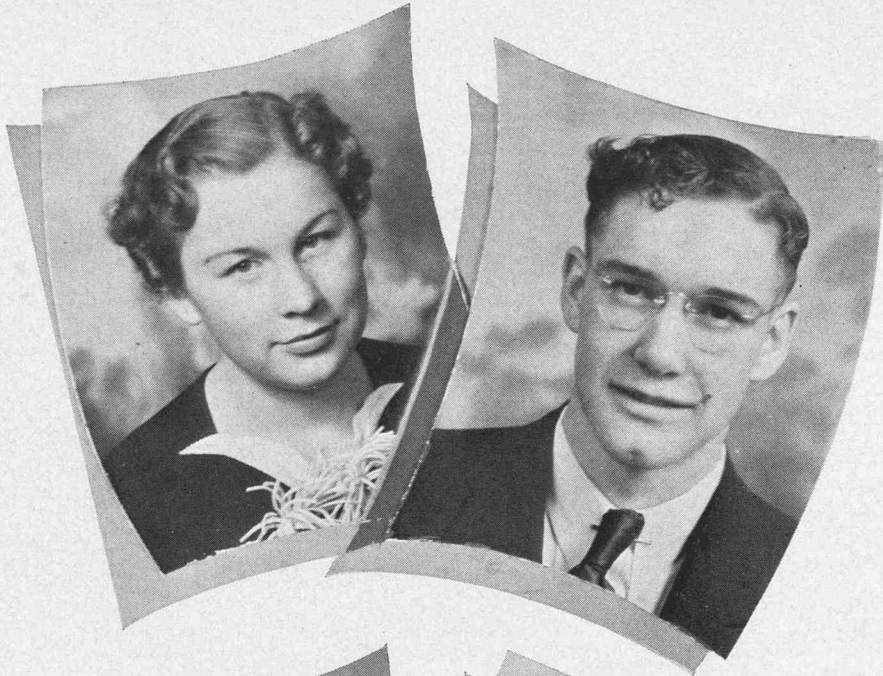
Charlette Jensen
Dale Johnson
Mary Lou Johnson
Clark Jorgensen
Grant Kent
CaDella Kershaw
Newell King
Viola Kirby
Jimmy Kostoff
Glen Lapray
Dale Larsen
Bonne Lewis
Estell Lewis
Kathleen Lewis
Morris Litz
Betty Loosle
Rhea Loosle
Bartley Lower
Bud Lower
Jenna Lou McCann
Keith McGavin
Blaine Merrill
Keith Merrill
Lauella Miles
Laura Miles
Donna Milligan
Lorain Myler
Venna Neeley
Billie Marie O'Brien
Marie Olson
Edna Orvin
Milton Payne
Kate Perkes
Mellree Perkes
Claude Peterson
Dennis Peterson
Nola Peterson
Boyd Pitcher
Mildred Pitcher

Valoise Pitcher
Darrell Porter
George Preece, Jr.
Paul Preece
Winona Preece
Wayne Pullum
Elda Purser
Wendell Ransom
Edward Rasmussen
Rowena Rasmussen
Warren L. Rawlin
Doyle Read
LaVern Redford
Mont Redford
Paul Ricks
Beth Rigby
Fred Robinson
Earl Sanders
Junior Sanders
Evelyn Seamons
Homer Seamons
Carol Smith
DeVern Sparks
Richard Stevens
Gordon Sutherland
Agnes Thomas
Emma Thomas
Faye Thompson
Grant Thompson
Vance Thompson
Roma Gene Thruston
Chester Tripp
Mattie Bee Turner
Janeal Villett
Glen Wheller
Paul Wheeler
Alvin Williams
James Williams
Lyman Wiser

THE 1937 POLARIS

Cleo Christensen
Editor

Myron Seamons
Business Manager



Beth Emmett
Assistant Editor

Dale VanOrden
Business Manager



Alfrieda Olsen
Adviser

W. W. Perkins
Adviser



THE NORCACHIAN

The Staff . . .

Joy Roskelley . . . Editor-in-Chief
 Sidney Kent . . . Business Mgr.
 W. W. Perkins Adviser
 Bernell Winn . . . Assistant Editor
 Arlene Griffin . . . Social Editor
 Ruby Johnson . . . Feature Editor
 Harold Gutke . . . Sports Editor
 Helen Miles . . . Asst. Business Mgr.
 Irene Olson Exchange
 Myron Seamons . . . Circulation Mgr.



Journalism Class . . .



First Row: Harold Gutke, Alrene Griffin, Sidney Kent, Bernell Winn, Joy Roskelley, Irene Olson, Ruby Johnson, Myron Seamons, W. W. Perkins.

Second Row: Sterling Nelson, Elmer Olsen, Veryl Webb, LaRae Crockett, Nada Cardon, Frances Rawlins, Avon Hyde, Alice Simmonds.

Third Row: Donald Williams, Dee Shepard, Joe Allen, Ortel Christensen, Anna Veibell, Letha Peterson, Maxine Ball, Venna Egbert.

Fourth Row: Cleone Tripp, Beth Plowman, Evelyn West, Mariam Phillips, Alice Aston, Verlye Allen, Gladys Berger, Glenda Bingham, Cleo Christensen.

TYPISTS

Brenda VanOrden, LaRae Crockett,
 Veryl Webb

REPORTERS

Joe Allen, Gladys Berger, June Bergeson, Cleo Christensen, Ortel Christensen, Venna Egbert, Avon Hyde, James Last, Sterling Nelson, Elmer Olson, Irene Olson, Beth Plowman, Frances Rawlins, Myron Seamons, Alice Simmonds, Randall Sorenson, Anna Veibell, Evelyn West, Donald Williams.

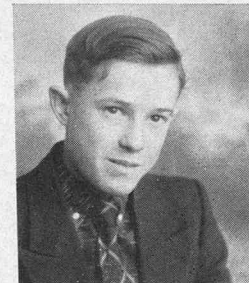


SCHOOL DEBATING TEAMS

Back Row: (Senior Debators) Cleo Christensen, Elmer Olsen, Irene Olsen, Maxine Ball.

Second Row: Frank Raymond, adviser; (Junior Debators) Mary L. Smith, Preston Johnson, Quinten West, Beth Emmett.

Front Row: (Freshmen and Sophomore Debators) Avis Peterson, Beatrice Pond, Tyle Cooley, Winston Benson, Terry Hansen.



Lyle Cooley
Debating Manager

School Debators . . .

. . . Another successful year in the forensic arts has been completed under the direction of Frank Raymond, coach, and Lyle Cooley, debating manager. The task of bridging non-decision debates with visiting teams from other high schools is a great one, yet the squad achieved that finer technique. Keen competition and splendid spirit marked the group as one of the finest in years.

. . . At the Provo tournament this spring Mary Smith and Maxine Ball represented the school.

Dramatic Club . . .

Public Speaking Organization

Founded at North Cache in 1935

Purpose: To foster a greater spirit of unity and cooperation among students studying drama.

Samuel Merrill . . . President
 Ruby Johnson . . . Vice President
 June Bergeson . . . Secretary
 Faye Sonne . . . Adviser



DRAMATIC CLUB

First Row: Estell Lewis, Ann Louise Barber, Nada Cardon, Constance Webb, Naomi Hendricks, Betty Maisey, Glenna Hyde, June Bergeson, Ruby Johnson, Samuel Merrill.

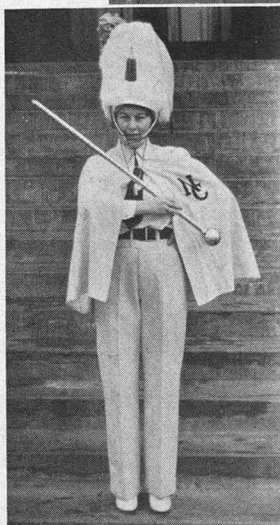
Second Row: Bessie Van Orden, Althea Rawlins, Luana Hancey, Rosalyn Godfrey, Virginia Fackrell, Myron Seamons, Joe Allen, Bob Hogan, Farr Dell Danford, Faye Sonne.

Third Row: Donna Hendricks, Melba Clayson, Alice Halgren, LaVon Hayes, Eunice Bingham, Lynn Richards, Budd Tout, Donald Williams, Harry Fern.

Fourth Row: Lola Thompson, Ida Monroe, Georgia Griffin, Gladys Berger, Metta Hale, Roma Steed, Luella Moore, Mary Rawlins, Donna Winn.

Fifth Row: Randall Sorenson, Maxine Peterson, Bernell Winn, Glenda Bingham, Elmer Olsen.

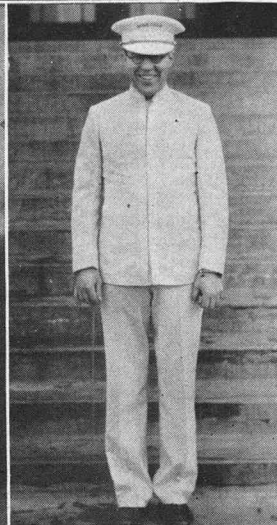
Concert Band . . .



Cleo Christensen
Drum Major



Band Sponsor and School Banner Carriers



J. W. Pulsipher
Director

Concert Orchestra . . .

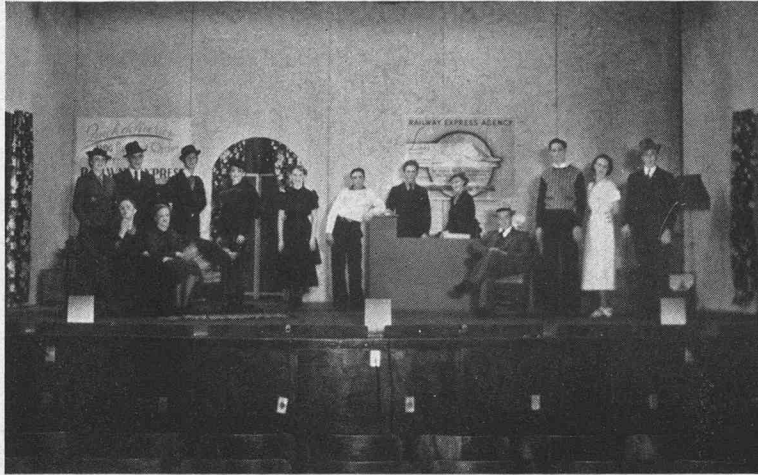


First Row: Dale Johnson, Venna Neeley, Adele Beutler, Mildred Pitcher, Budd Tout, Eunice Bingham, Alice Halgren, Gladys Eppich, Evelyn Seamons, Rhea Hicken.

Second Row: J. W. Pulsipher, Ferris Hillyard, Billy Bowles, Alvin Williams, Ray Boman, Stratford Loosle, Marriett Tarbet, Edward Markham, Eldon Hansen, Georgia Griffin, Loa Chambers, Roma Gene Thurston, Gene Funk, Estell Lewis.

Third Row: Billie Marie O'Brien, Sidney Johnson, Terry Hansen.

DRAMATICS



"GUESS AGAIN" . . .

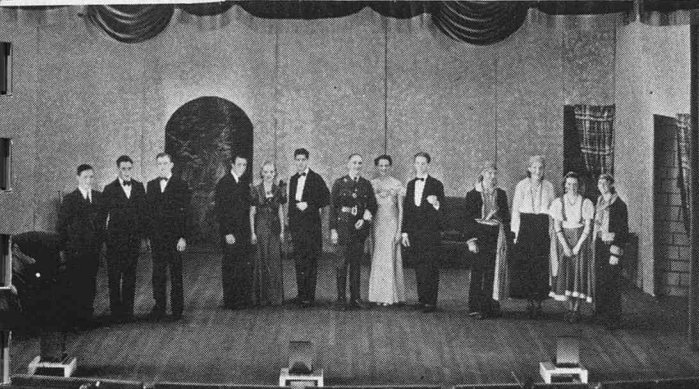
. . . Englishmen held sway in "Guess Again," our annual school play presented December 14. There were present four Lord Wiggletons, each claiming to be the genuine English Lord complete with tweeds, monicles, and an English (Henglish) brogue.

. . . Earl Wennergren portrayed Bill Douglas, the dashing young hero, and Glenda Bingham as Janet Moore, his comely young sweetheart, Leone Hendricks as Olive Ordway with her "uplift walk", while Mary Smith as Dora Mae, fresh modern young girl of today and Roma Steel as Mrs. Skinner, her mother, who was as 1990-ish as is allowed by the law.

. . . Other members of the cast include Budd Tout, Joe Allen, Rosalyn Godfrey, Sybil Christensen, Jeanne Roskelley, Reynold Noble, Douglas McQuarrie, Samuel Merrill and Lynn Richards.

. . . Much credit is due Faye Sonne, for her untiring energy in repeatedly producing excellent school plays, and we congratulate her on her latest success.

The Gypsy Rover . . .



. . . Under the direction of J. W. Pulsipher, the Boys' and Girls' Glee Club, the Concert Orchestra, and the Dancing Class, cooperated in presenting a most delightful and beautiful operatic production.

. . . Elaborate costuming, and stage designed to feature modern color lighting effect, with trees as a background marked a realistic gypsy camp while in the second act arrangements of modernistic design created a pleasing atmosphere of an American home . . . Original dances by Wynona Hansen, dancing director, were a high spot in the entertainment.



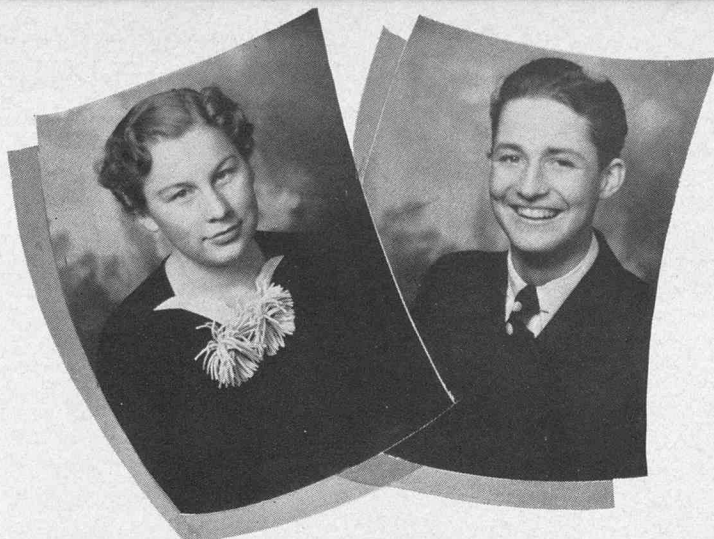
. . . Opera cast of first act.

. . . Leads

. . . Opera cast of second act.

. . . Dancers

Cleo Christensen



Earl Winnergren

- Nada Cardon
- Faye Reese
- Alice Simmonds
- Beth Bambrough
- Marriett Tarbet
- Carrie McQuarrie
- Ruth Cantwell

- Robert Woolf
- Joe Allen
- Normand Andrew
- Duane Griffin
- Harold Gutke
- Val Rigby
- James Last

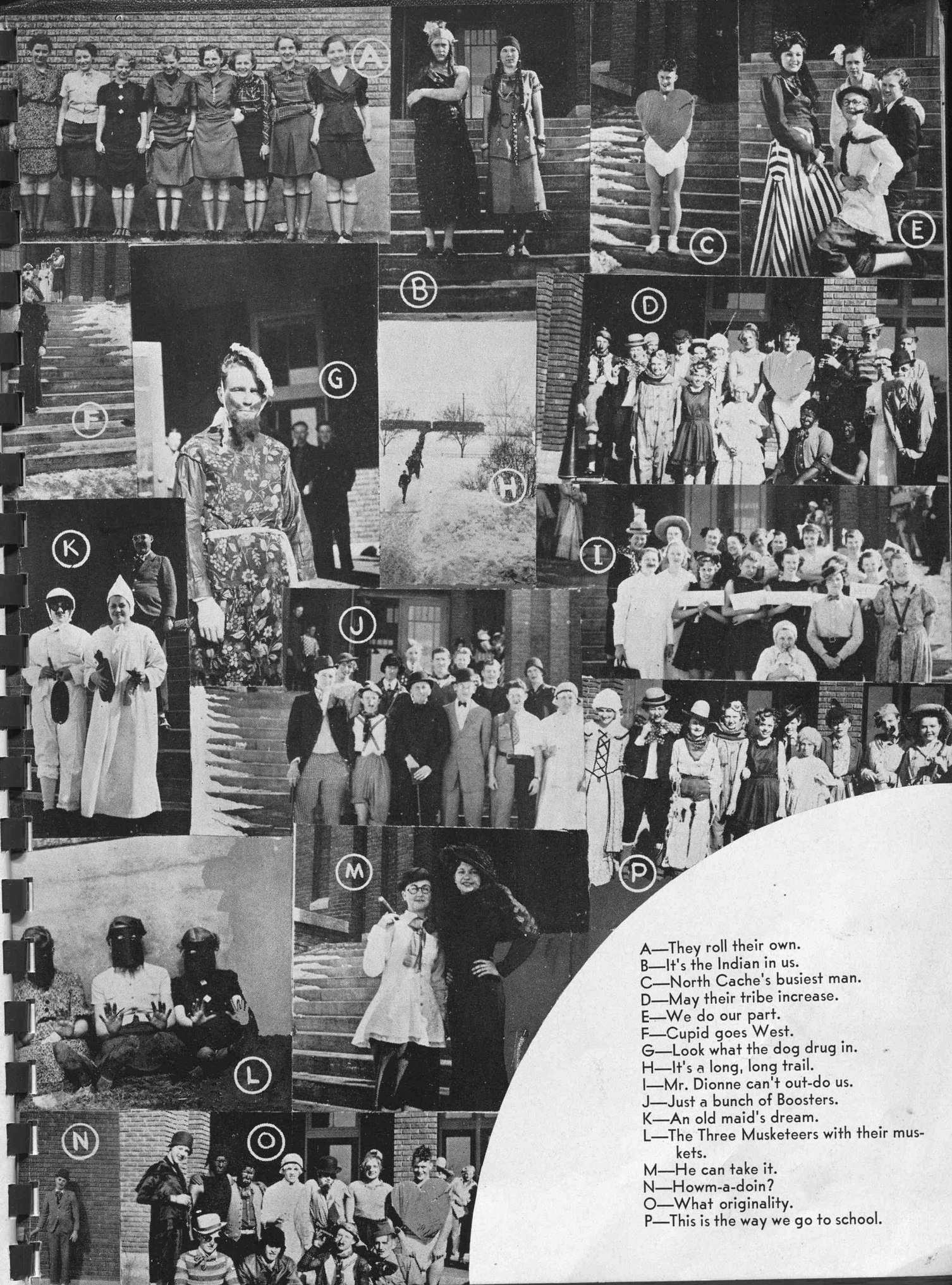
Most Popular Students



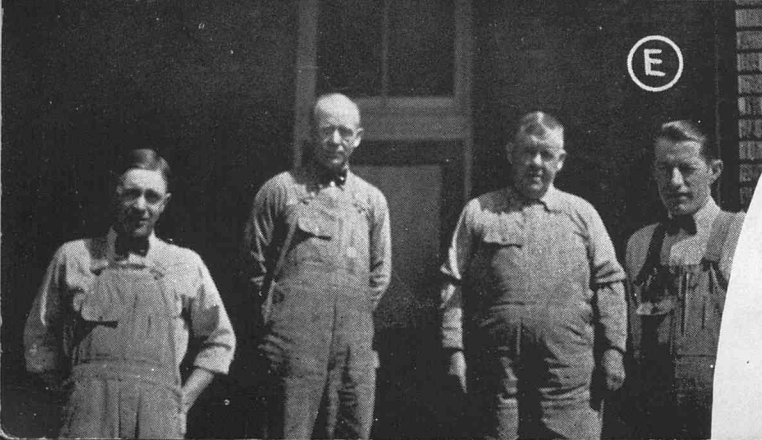
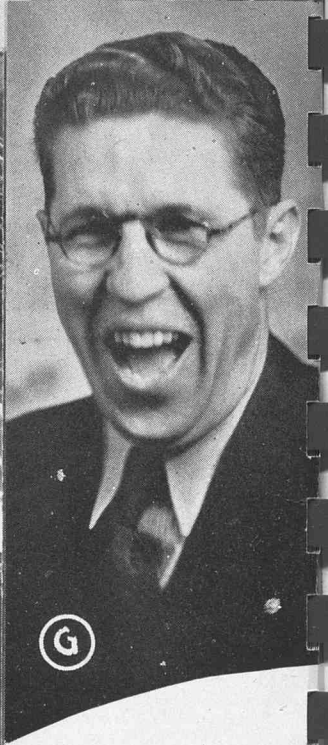
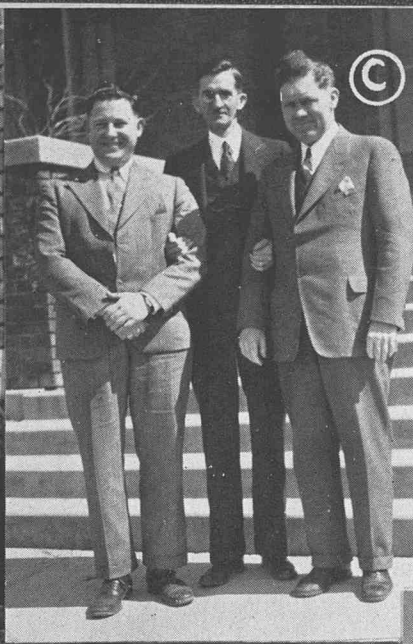
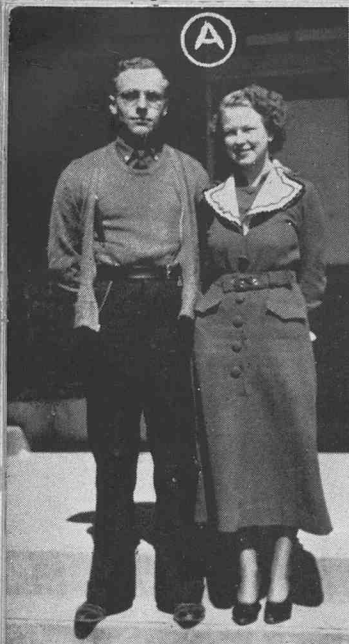
HARVEST BALL QUEEN AND ATTENDANTS



JUNIOR PROM
QUEEN
and
ATTENDANTS



A—They roll their own.
 B—It's the Indian in us.
 C—North Cache's busiest man.
 D—May their tribe increase.
 E—We do our part.
 F—Cupid goes West.
 G—Look what the dog drug in.
 H—It's a long, long trail.
 I—Mr. Dionne can't out-do us.
 J—Just a bunch of Boosters.
 K—An old maid's dream.
 L—The Three Musketeers with their muskets.
 M—He can take it.
 N—Howm-a-doin?
 O—What originality.
 P—This is the way we go to school.



A—And so they were married.

B—John L. Peterson, shop teacher, has the curly hair.

C—L. D. S. Seminary Teachers.

D—Mrs. Littlelyke has satisfied our cravings with her good things to eat.

E—Dependable, kind, congenial, and thoroughness are distinct characteristics of our custodians.

F—Plenty of each is our motto—this is seconded by Coach Whitman and his wife as also being twins.

G—After effects of a band contest.

Bus Drivers . . .



First Row: A. M. Jorgensen, R. E. Butler, Alfred Allen, Lewis Brown, Joseph Peterson.
Second Row: Byron Loosle, Howard Bingham, Saul Allen.
3rd Row: Roland Griffin, W. A. Cooley, W. E. Layne.

. . . Dependability is a marked characteristic of these men, who very diligently pilot us to school . . . We do appreciate the patience and kindness that they have, even though we may not show consideration to them, when we argue, sing, laugh or throw paper around in their buses only for them to clean up, and say nothing to us about it.

School Buses . . .



ORGANIZATIONS



GIRLS' LEAGUE

First Row: Marjorie Parkinson, Eulalia Reese, Connie Hurren, Frances Rawlins, Ada Johnson, Marilyn Cottle.

Second Row: Beth Allen, Ruth Griffin, Wynona Hansen, BarDee Peart, Mary Buxton.

Girls' League . . .

. . . The Girls' League contributed materially to the growth and development of many students' interests in school and social life as well as to the problem of helping freshmen girls adjust themselves to high school life.

Boys' League . . .

. . . The earnest cooperation of this year's members in supporting the intense intramural rivalries . . . such as soft ball and basketball, their splendid response to the numerous campus activities easily acknowledges the League of '37 as typical promoters of North Cache traditions.

Harold Gutke President
 Bob Woolf Vice President
 Max Bergeson Secretary
 C. A. Hurren Adviser
 Heber Whiting Adviser

Ada Johnson President
 Marilyn Cottle Vice President
 Arlene Allen Secretary
 Wynona Hansen Dean of Girls
 Frances Rawlins, Connie Hurren . . . Senior Rep.
 Eulalia Reese, Marjorie Parkinson . . . Jun. Rep.
 Mary Buxton, BarDee Peart Soph. Rep.
 Ruth Griffin, Beth Allen Fres. Rep.



BOYS' LEAGUE OFFICERS

Max Bergeson, Bob Woolf, Heber Whiting, Harold Gutke, C. A. Hurren.

German Club . . .

Organization of Students of German

Founded at North Cache in 1935

Purpose: To promote a higher standard of scholarship and appreciation of the German language.

Melba Christensen . . . President
 Sidney Kent . . . Vice President
 Aletha Reeder . . . Secretary
 LaGrand D. Spencer . . . Adviser



GERMAN CLUB

First Row: Sidney Kent, Melba Christensen, Geneva Ellerman, Mary Wheeler, Myron Seamons.
 Second Row: Dorothy Pitcher, Maxine Ball, Cleah Telford, Joe Allen.
 Third Row: Ortel Christensen, LaGrand Spencer, Priday Smith.



COMMERCIAL CLUB

First Row: Bernice Hurren, Dorothy Pitcher, Loa Chambers, Marjorie Parkinson, Avon Hyde, Athalie Howell, Brenda Van Orden, James Last, Alice Simmonds, Mary Rawlins, Gertrude Bentley.
 Second Row: Cleo Christensen, Kiyo Iwamoto, Jenness Fulkerson, Carrie McQuarrie, Eulalia Reese, Faye Reese, Nada Cardon, Jessie Seamons, Phyllis Reeder, Thelma King, Edna Pederson.
 Third Row: ArVella Watts, Marguerite Hendricks, Glade Nilson, LaVon Hayes, Donna Sorenson, Viva Hansen, Roma Steed, Thora Ricks, Anna Veibell, Alfrieda Olsen.
 Fourth Row: Jack Roskelley, Morris Litz, Clayton Lewis, Alice Mather, Verlye Allen, Anna Lou Reese, Mary Petterborg.

Commercial Club . . .

Organization of Commercial Students

Founded at North Cache in 1935

Purpose: to promote interest in commercial subjects.

James Last President
 Alice Simmonds . . . Vice President
 Brenda Van Orden . . . Secretary
 Gertrude Bentley Adviser

ORGANIZATIONS

Home Economics Club . . .

OFFICERS

Anne Larsen
Adviser

LaRae Crockett
President

Veryl Webb
Vice President

Joy Roskelley
Secretary



First Row: LaRae Crockett, Veryl Webb, Avon Hyde, Peggy Parkinson, Clea Telford, Mary Haslam, Ada Johnson, Marilyn Cottle, Cora Boman, Leone Hendricks.

Second Row: Anne Larsen, Jessie Seamons, Mildred Ashcroft, Carol Smith, Lydia Harper, Armina Jonas, Theda Bair, BarDee Peart, Gay Tripp.

Third Row: Joy Roskelley, Winona Wheeler, Mable Rogers, Evelyn P. Seamons, Katheryn Pond, Doris Harwood, Celia Balls, Ethel Waite, Gladys Pitcher, Bara Stoddard, Lorraine Larsen, Mildred Merrill, Rhea Loosle.

Fourth Row: Katheryn Tubbs, Nona Crookston, Orris Mae Allen, Thelma Wheeler, Beth Plowman, Dorothy Spackman, Ella Hall, Evelyn West, Miriam Phillips.

Fifth Row: Kathleen Grant, Bonnie Munk, Marigene Lamb, Enid Smith, Ortel Christensen, Venna Egbert, Cleo Christensen.

National Honorary Scholastic Organization

Founded by Ellen H. Richards

Established at North Cache in 1930

Purpose: To foster personal development and individuality of the girls . . . to form a connecting link between the school and home . . . to develop an appreciation in the field of Home Economics . . . to assist in the development of the Home Economics Department . . . to cooperate with all organizations and in all activities of the school.

Future Farmer Officers . . .



Back Row, Left to Right: Hal Reed, Myron Hatch, Quintin West.

Front Row: Scott Hendricks, Glen Larsen, Quintin Peart, A. W. Bair (adviser).

Future Farmer Club . . .

First Row: Conrad Richardson, Norman Funk, Scott Hendricks, Glen Larsen, Tarrell Hatch, Keith Clarke, Ralph Cooley, Clyde Allred, Neal Benson.

Second Row: Hal Reed, Myron Hatch, Reynold Noble, Wendell Thompson, Dee Tarbet, Stanley Richardson, Quintin West, John T. Thain, Quintin Peart, LaVon Duce.



Third Row: Lynn Reese, Friday Smith, Edward Hyden, Winn Peterson, Wendell Smith, Melvin Van Noy, Douglas Hendricks, Lindsay Rawlins.

Fourth Row: Lyle Cooley, Dale Rigby, Boyd Barnes, Cecil Kent, Lester Thompson, Wendell Boman, Amos W. Bair.

Fifth Row: James Gittens, Ford Sorenson, Alva Boman.

Stock Judging Team . . .

Left to Right: Norman Funk, Scott Hendricks, Myron Hatch, LaVon Duce, Quintin West.



. . . the various Judging Teams did credit to themselves and to the high school at the Ogden show and at Logan.

National Honorary Scholastic Club Founded at Virginia in 1928

Established at North Cache in 1929

Purpose: To promote vocational agriculture in our school by developing pride among our members and encouraging members to do a better grade of work . . . To develop competent, aggressive, rural and agricultural leadership . . . to foster practical phases of agriculture, and establish confidence of the member in himself and his work.

ORGANIZATIONS



GIRLS' ATHLETIC CLUB

First Row: LaVern Redford, Marie Johnson, Jeanette White, Beth Allen, Alene Hansen, Celia Balls, Ella Christoffersen, Wynona Hansen.

Second Row: Gertrude Merrill, Ellen Cook, Rula Hurren, Zenda Harrison, Roma Hurren, Ruth Griffin, Violet Johnson, Una Kingsford.

Third Row: Avon Hyde, Athalie Howell, Laura Pullum, Wilma Hyer, Rhea Hicken, Iva Hancey, Kathleen Grant, Carrie McQuarrie.

Girls' Athletic Club . . .

Girls' Physical Ed. Organization

Founded at North Cache in 1935

Purpose: To foster greater interest in sportsmanship and athletics.

Celia Balls President
 Alene Hansen . . . Vice President
 Beth Allen Secretary
 Ella Christofferson . Business Mgr.
 Wynona Hansen Adviser

Hobby Club . . .

Social & Educational Organization

Founded at North Cache in 1935

Purpose: To create and perfect student hobbies.

Paul Taggart President
 Gordon Olson . . . Vice President
 Clyde Bright Secretary
 H. M. Wadsworth . . . Adviser



HOBBY CLUB

First Row: Paul Taggart, Gordon Olson, Darwin Salisbury.

Second Row: H. M. Wadsworth, Loila Tidwell, Louise Hyer, Mary McKnight, Irene Andrew, Opal Allred, Dorothy Elwood, Cleoria Wilcox, Louise Spillman, Donna Winn.

Third Row: Lathael Winn, Richard Allred, Leon Murray, Clayton Lewis, Cecile Kent, Wendell Smith, Lowell Lewis.

Beno Club Officers . . .

Organization of Unaffiliated
Students

Founded at North Cache in 1936

Purpose: To create social activities
for unaffiliated students on the
campus . . . originators of the
amateur hour.

- Allen Baker President
- Carrie McQuarrie . . . Vice President
- Robert Woolf Secretary
- LaGrand D. Spencer . . . Adviser



Bob Woolf, Carrie McQuarrie, LeGrande Spencer, Allen Baker.



Debating Club . . .

Honorary Debating Organization

Founded at North Cache in 1935

Purpose: To further an active in-
terest in debating and oratory.

- Maxine Ball President
- Quentin West Vice President
- Irene Olsen Secretary
- Frank Raymond Adviser

First Row: Quentin West, Irene Olsen, Maxine Ball.

Second Row: Lyle Cooley, Elmer Olsen, Frances Rawlins, Beth Emmett, Jeanne Roskelley.

Third Row: Normand Andrew, Rulon Waite, Cleo Christensen, Nelda Van Dyke, Frank Raymond.

ORGANIZATIONS



First Row: Blanche Bingham, Helen Miles, Arlene Griffin, Aleda Tingey, Alice Simmonds, Delva Ewing, Maxine Ball.

Second Row: Marigene Lamb, LaRae Crockett, Veryl Webb, Mary Traveller, Armina Jonas, Glenna Seamons, Melba Christensen, Nada Cardon.

Third Row: Lillie Saunders, Dora Peterson, Anna Veibell, Ada Johnson, Theda Bair, Cleone Gunnell, Frances Rawlins.

La Senia Club . . .

A Social Organization

Founded at North Cache in 1930

Purpose: To stimulate interest and school spirit throughout this school year.

Alice Simmonds . . . President

Delva Ewing . . . Vice President

Maxine Ball . . . Secretary

Aleda Tingey . . . Adviser

Booster Club . . .

Social Club

Founded at North Cache in 1927

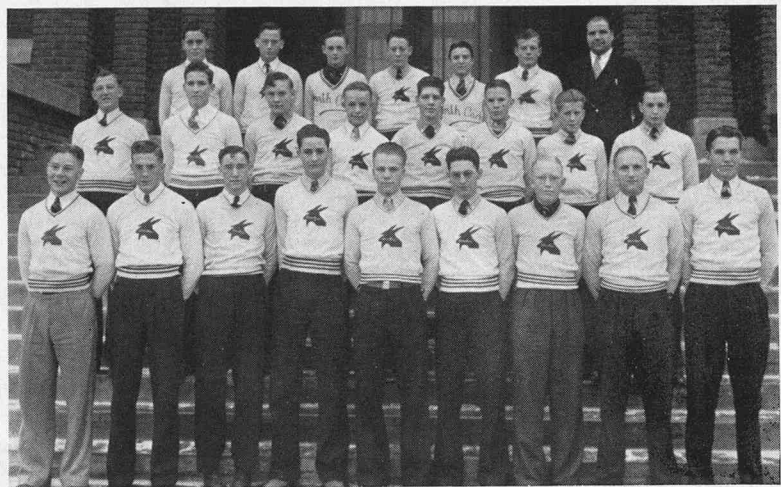
Purpose: To sponsor and support activities of the school.

Stirling Nelson . . . President

Dee Van Orden . . . Vice President

Gordon Webb . . . Secretary

Heber Whiting . . . Adviser



First Row: Harold Gutke, Bob Woolf, Myron Seamons; Earl Wennergren, Elmer Olsen, Vern Haslam, Dee Van Orden, Sterling Nelson, Gordon Webb.

Second Row: Sidney Kent, Jed Robinson, Richard Griffin, Dale Van Orden, Budd Tout, Clinton Nelson, Ted Bernhisel, Glen Larsen.

Third Row: Samuel Merrill, Asael Buttars, Mervin Peterson, Gaurth Hansen, Joe Allen, Irel Eppich, Heber Whiting.

Pep Club . . .

Social Organization

Founded at North Cache in 1927

Purpose: To promote greater student cooperation and encourage closer social relations on the campus.

JUNIOR PEP CLUB

- Arlene Allen President
- Beth Bambrough Vice President
- La Gene Harris Secretary
- Arta Larsen Adviser

FRESHMEN and SOPHOMORE PEP CLUB

- Avis Peterson President
- Ella Christoffersen Vice President
- Evelyn P. Seamons Secretary
- Theola Merrill Adviser



First Row: Junior Pep: Arta Larsen, Beth Bambrough, Arlene Allen, LaGene Harris. Freshmen and Sophomore Pep: Evelyn P. Seamons, Ella Christoffersen, Avis Peterson, Theola Merrill.

Second Row: Dorothy Leavitt, Constance Webb, Margaret Anderson, Ethel Woodland, Carrell Hatch, Shirley Baker, Doris Harwood, Zenda Harrison, Beth Allen, Gwendolyn Hogan, Mary Lou Johnson.

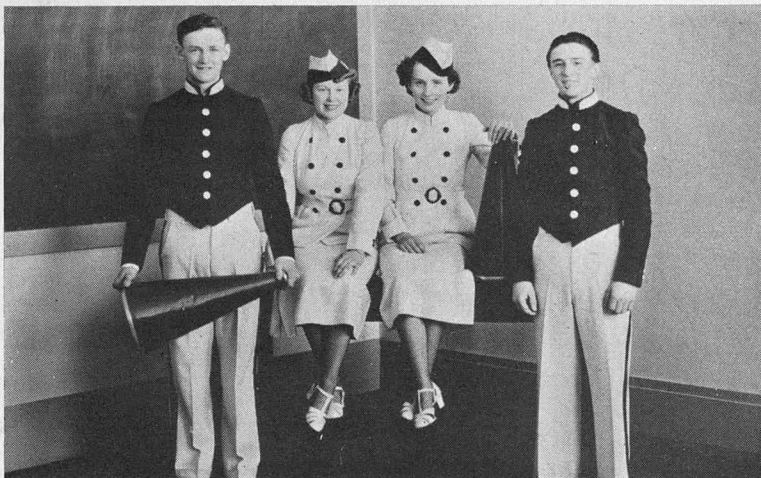
Third Row: Shirley Reese, Roma Steed, LoRee Munk, Julia Merrill, NaDene Ballard, Gwen Ballard, NaDene Noble, Lillie Dobbs, Eva Cole, Viva Hansen, Viola Veibell.

Fourth Row: Ruth Cantwell, LaVoy Mortensen, Ann Louise Barber, Marva Johnson, Luella Moore, LaVon Hayes, Kathleen Lewis, Billie Marie O'Brien.

Fifth Row: Kathryn Hoffman, Jeneal Villett, Donna Glover, Doris Harwood, Beatrice Pond, Phyllis Stoddard, Donna Hendricks, Ruth Griffin, Bonne Lewis, Venna Neeley.

Sixth Row: Winona Preece, Donna Milligan, Leona Hendricks, Josie Poulsen, Dora Gregory, Valoise Pitcher.

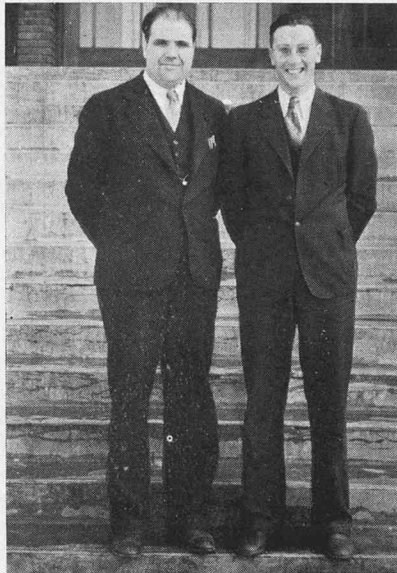
Song and Cheer Leaders . . .



Mervin Peterson, Faye Reese, Arlene Griffin, Joe Allen.

. . . Organizing the cheering and singing of the student body . . . creating night pep rallies in and around towns as well as cards and pep signs around the school before games is due to the diligent work of our leaders . . . a substantial amount of the success enjoyed by North Cache's athletic teams this year may be due to the active work of the cheer and song leaders.

Athletic Administration



Coaches Heber Whiting & Jay Whitman

Coaches . . .

. . . Coach Heber Whiting has worked unceasingly to put North Cache on the map as one of the leading schools in the conference . . . This year Coach Whiting met with singular success when North Cache's football team beat Logan, Preston, Weber, and played a sensational 13-12 game favoring South Cache.

. . . Coach Whiting has become known as a builder of men as well as teams and will always rank as one of the leaders in North Cache's athletic history.

. . . For two years Jay "Cagey" Whitman has consistently built stronger basketball teams through drilling a very talented group of boys.

. . . He is esteemed as a man of genial personality, astute judgment, and rare ability of understanding and directing boys. Coach Whitman was the first to introduce bowling, ping pong, and many other sports on the campus and has done a great deal towards boosting athletics of all kinds.

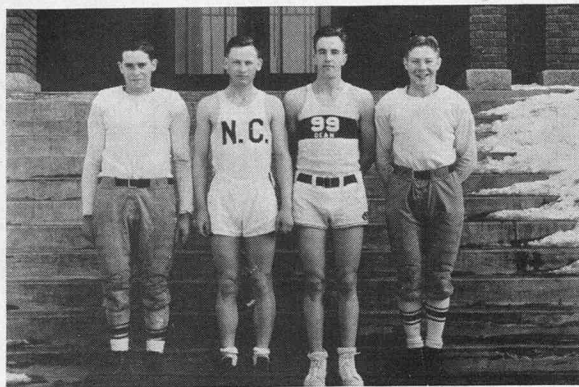
Athletic Council . . .

. . . The primary functions of this committee are to regulate the general policy of athletics in the school, to arrange games in connection with the directors of athletics, to spend wisely the money appropriated for athletic purposes, to recommend athletes for letters, and to encourage athletic endeavors at this institution.



Left to Right: Principal C. I. Stoddard, M. R. Cooley, Heber Whiting, A. W. Bair, Jay Whitman, E. B. Olesen.

Captains . . .



Sam Merrill (Football Captain) put in during illness of Gutke; Asael Buttars (Track Captain); Dean Rich (Basketball Captain); Harold Gutke (Football Captain) (Track Field Captain).

. . . Although Captain "Butch" Gutke was kept on the sidelines with the exception of a few minutes of the first game because of an injured knee, the post was very ably handled by his team mate, Samuel Merrill.

. . . Dean Rich, basketball captain, proved to be a capable leader and a great aid to Coach Whitman.

. . . Sound judgment and leadership of Asael Buttars and Harold Gutke have gained for them the friendship and confidence of all track enthusiasts.

Intramural Athletics . . .

. . . North Cache's most successful intramural contest sponsored by the Boys' League is drawing to a conclusion with more boys competing in this year's activity than ever before . . . Leaders are developed; new athletics discovered; and new friendships are attained by student participation in intramural athletics.

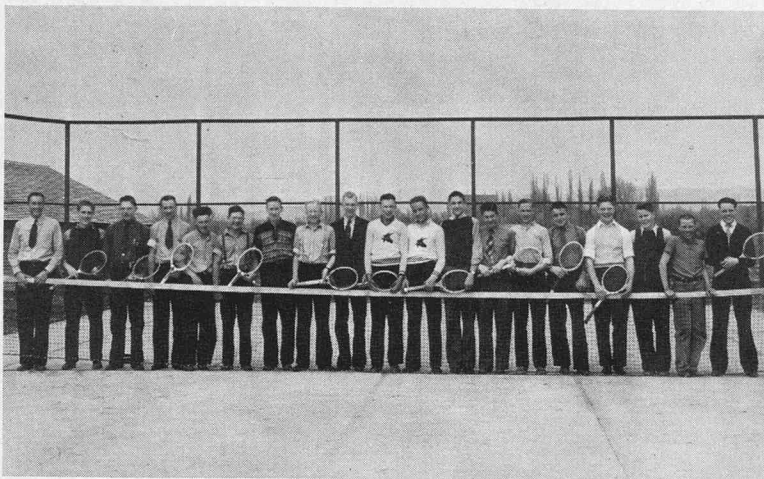


(Sitting): Howard Hanson, Ray Hayes, Sidney Bingham, Reed Hendricks, Richard Griffin.

(Kneeling): Harlow Griffin, Alvin Terry, Dale Balls, Rex Pilkington, Vance Waite.

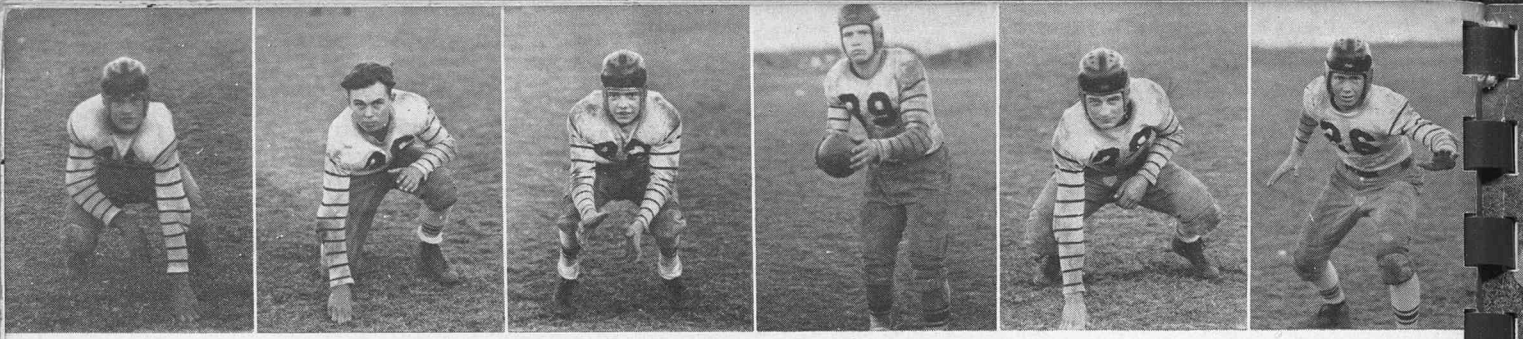
(Standing): Asael Buttars, Dale Hendricks, DeMar Scrowthers, Duane Griffin, Wayne Traveller, Vero Wardell.

Tennis Team . . .

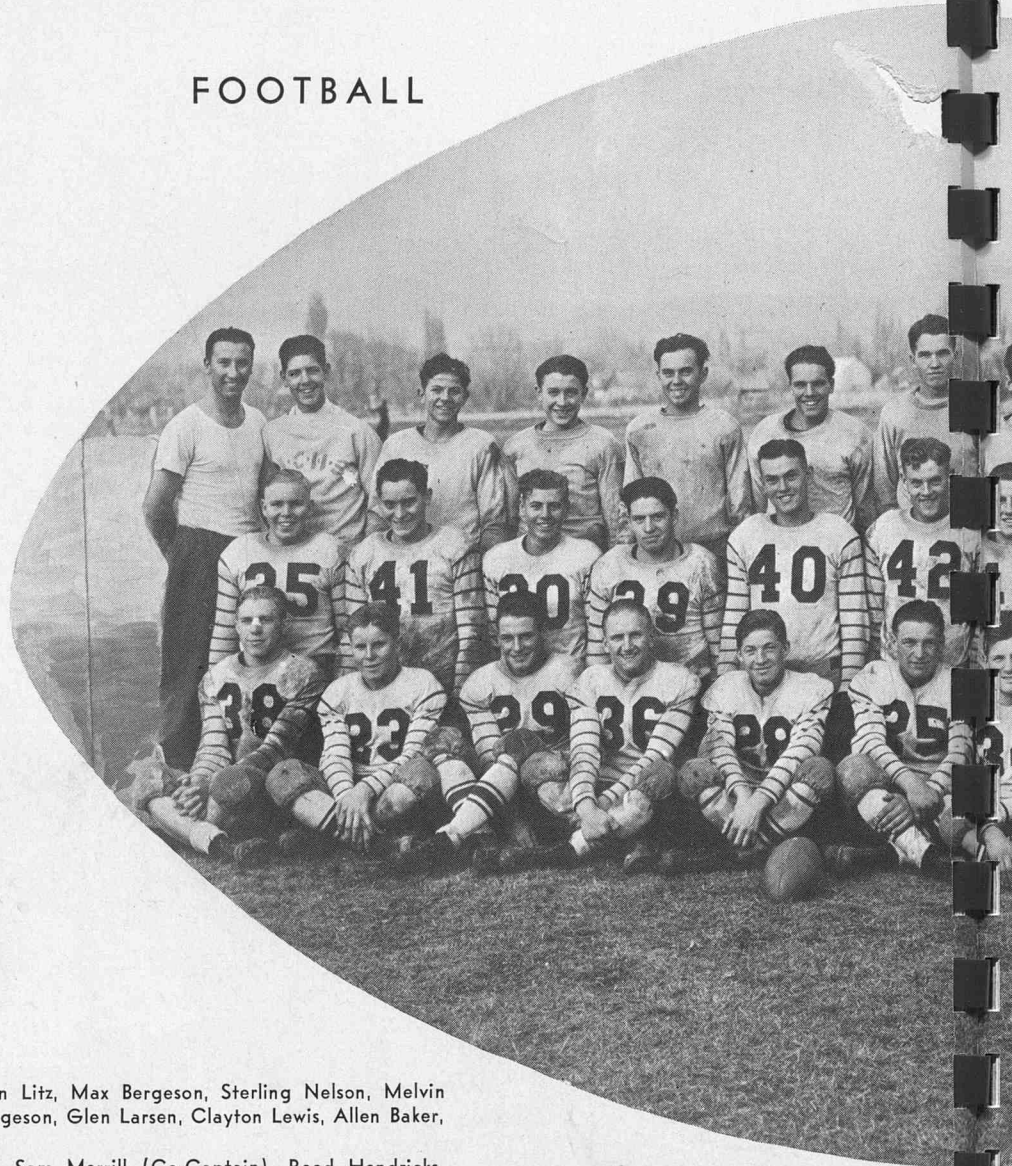


Coach Jay Whitman, Don McCombs, Gerald Hendricks, Clair Karren, Joe Preece, Boyd Karren, Bernard Hendricks, Dee VanOrden, Dean Hicken, Clinton Nelson, Dale VanOrden, Terrell Bell, Marvin Jorgensen, Paul McNight, Max Lower, Harold Gutke, Leon Litz, Keith Wardell, Marcell Pitcher.

. . . Coach Jay Whitman worked with care and constant effort to turn out another good squad this year regardless of losing almost all of last year's lettermen. Getting a very slow start due to the bad weather this spring the North Cache netters proved to be very stiff competition for the other teams. Dale VanOrden, Harold "Butch" Gutke, Dean Hicken, and Dee VanOrden won their matches with Preston, while engagements with Logan were hard fought battles. At the time of this writing the teams appears to be a serious threat to the supremacy in the division.

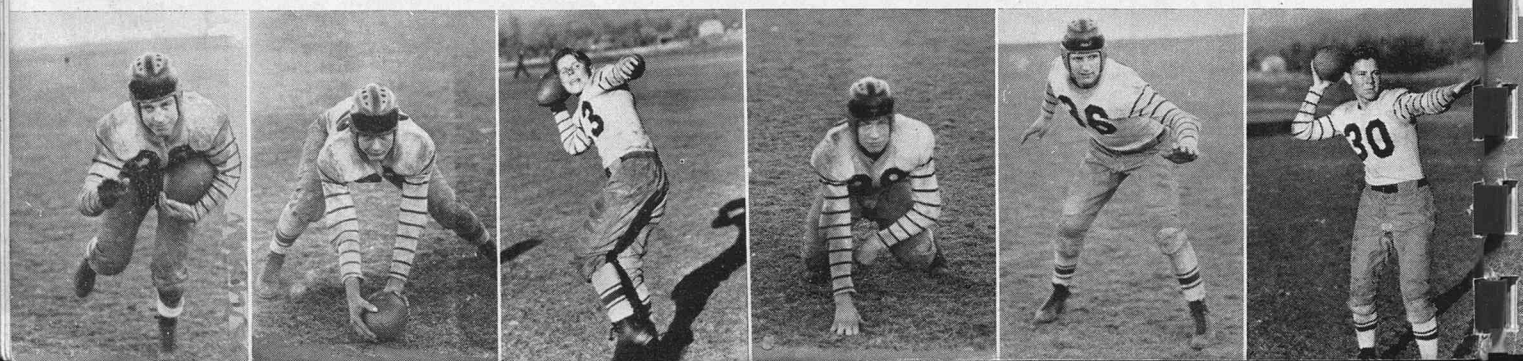


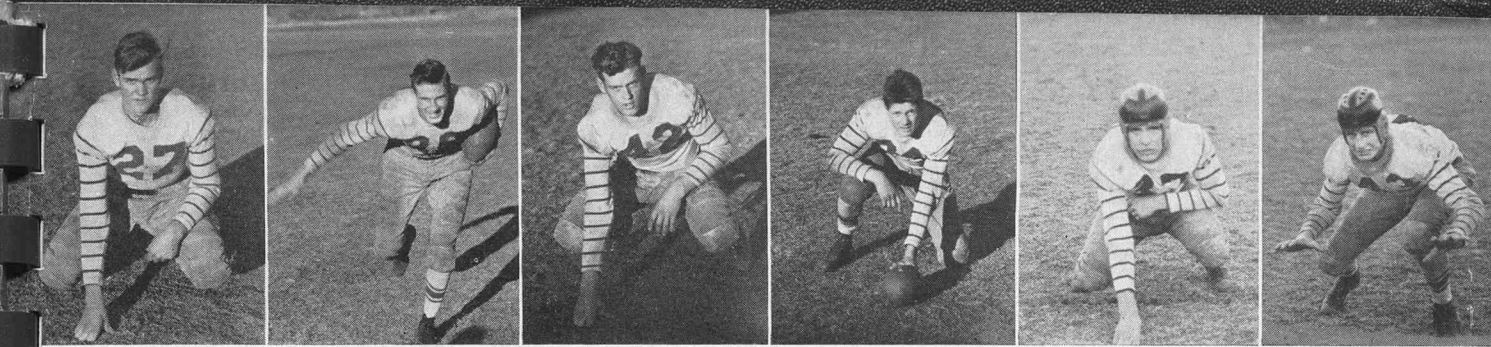
FOOTBALL



First Row: Leon Murray, Leon Litz, Max Bergeson, Sterling Nelson, Melvin Van Noy, John T. Thain, Garth Bergeson, Glen Larsen, Clayton Lewis, Allen Baker, Norman Andrew.

Second Row: Robert Choate, Sam Merrill (Co-Captain), Reed Hendricks, Hal Wright, Verden Talbot, Ross Talbot, Gerald Hendricks, Bob Woolf, Ford



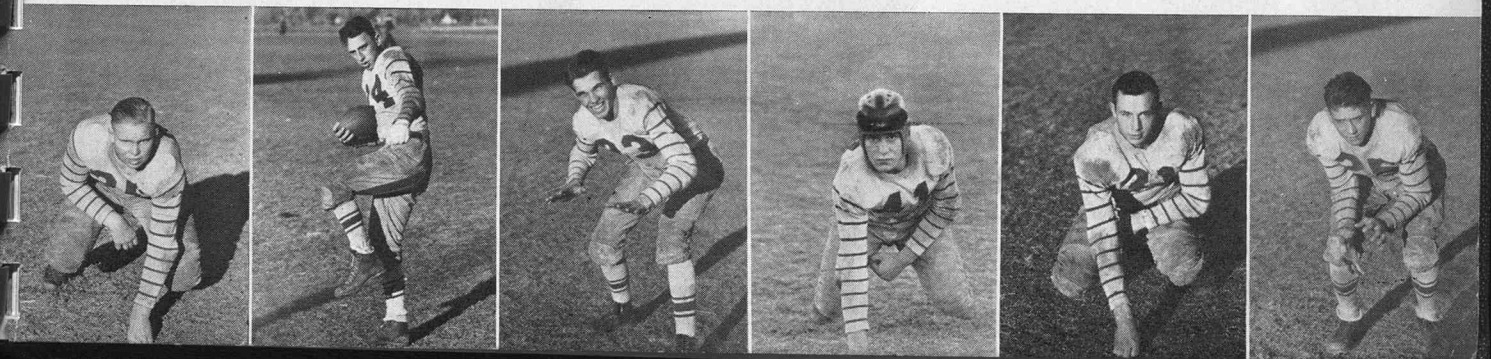


SQUAD



Sorenson, Milton Carver, Edward Hyden.

Third Row: Jay Whitman (Assistant Coach), Budd Tout, Reed Hall, Sidney Bingham, Bert Litz, Marcell Pitcher, Gordon Webb, Lynn Richards, Far Dell Dandford, Glen Maisey, Bernard Hendricks, Harold Gutke (Captain), Heber Whiting (Coach).



BASKETBALL

Basketball Team . . .



Clock-wise: David Halgren, Bud Low, Harold Phillips, Val Rigby, Captain Dean Rich, Norman Andrews, Harold Gutke, Donald McCombs, Iwra Jardine.

. . . After a slow start during their Idaho invasion, the Bulldogs went into action in their conference schedule and showed up well against the strongest teams of the Region . . . holding Logan to an extra period, downing South Cache "Spartans," and holding Ogden to a score of 26-23, as well as thumping the Bear River Bears 25-23. . . Easily the outstanding individual of the year, Gutke scored 101 points in the conference games. Andrew, Low, Rich and Rigby played brilliantly, and the entire team drew commendable praise for their performance.

Track Squad . . .



Front Row: Ross Talbet, Ford Sorensen, Vern Haslam, Sterling Nelson, Asael Buttars, Harold Gutke, Dale Hendricks, Melvin VanNoy, Bruce Webb, Joe Allen, Earnest Warren, Dick Stevens (asst. mgr.).

Center Row: Sidney Kent, Gordon Webb, Douglas Hendricks, Jed Robinson, Gordon Olson, Earl Ransom, Verl Ransom, John Thomas, Afton Orchard, Omar Bergeson, Gerald Hyer, Budd Tout (athletic manager).

Back Row: Heber Whiting, Verdon Talbot, Gerald Hendricks, Edward Markham, Edward Hyden, Max Bergeson, Leon Murray, Irel Eppich, Glen Masey, Glen Larson, Hal Wright, Norman Andrews, Bernard Hendricks.

Winner of Plant Medal . . .


. . . Harold Gutke, by his outstanding high school athletic career, was adjudged the winner of the Plant Medal. Mr. H. T. Plant awards this medal each year to the senior boy who is the most outstanding athlete at North Cache. The athletic committee have arranged a point system that covers all four years, by which they pick the winner.

. . . Harold has been very active in athletics since his freshman year. His career in scholastic athletics and other activities includes the following: football 1, 2, 3, 4; team captain 4; basketball 3, 4. Harold is also a 3-year letterman in track, having acted as captain his fourth year, he was division winner in shot put, and was awarded a letter in tennis his fourth year.

. . . Harold was elected president of the Boys' League, was a Booster club member, and was sports editor of the Norcachain. He has also had a good scholastic record. He is the second boy in the family to have received this same award.



Compliments of
AUTREY BROS.
DENVER, COLORADO


High School Jewelry
Announcements and Diplomas

Calendar of School Year

August 31—First day of school. Old friends meet again as we start the school year off with a BANG.


SEPTEMBER

- 1, 2—Registration continues.
- 3—New instructors are introduced to the student body.
- 4—Cafeteria has rush on scalloped salmon.
- 7—While the student body finds pleasure at a matinee dance the bands play sweet music at "Founders Day" at Wellsville.
- 8—Classes appoint big three for leaders of school year.
- 9—Student body agrees to refrain from painting freshmen like Indians.
- 10—The bright red ruby wins by popular vote for senior class ring.
- 11—The freshmen become acquainted with seniors. (Get Acquainted Day.)
- 14—Students play "Follow the Leader" going to the fair.
- 15—As the game continues classes diminish.
- 16—N. C. Fair day arrives at last.

THE
SMITHFIELD SENTINEL

Published Since 1907

Smithfield, Utah


Jobbers of Distinctive
and
Modernistic Printing

Prompt Service

--

Satisfaction Guaranteed

Hear Ye! Hear Ye!

Listen, Students—(Teachers, too)
We've got something to offer you.
We want you to ride in a new V-8
You're ready to go? O.K., it's a date!
If in cars you have ridden you never have
tried

The luxurious comfort of "Centerpoise
Ride"

If you never have felt at high speed or
low

That V-8 engine react 'neath your toe,
Then it's time that you did! You've a big
thrill ahead!

Note the address below or 'phone us in-
stead

There's no obligation and nothing to
pay.

All that we ask is **you call us today.**

Sales FORD Service

**NORTH CACHE MOTOR
COMPANY**

Smithfield, Utah

Phone 14

SEE US FOR

Sheaffer's Fountain Pens

Ideal Graduation Gifts



LEWISTON DRUG CO.

Lewiston, Utah

THE BLUEBIRD

Logan, Utah

We Take Great Pride in Presenting a
Complete Line of Finer Foods
for Your Table

It Pays to Shop at

ORLO'S CASH MARKET

"Lewiston's Home Owned Store"

- 17—It is decided who is to be who when clubs elect officers and enroll members.
- 21—Journalistic leaders selected.
- 22—First assembly held over new R.C.A. loud speaking system. (1935-36 Senior Gift.)
- 23—Cheer leaders introduce new cheers and the student body stretch their vocal cords.
- 24—Football stars introduced to eager student body.
- 25—Logan Grizzlies surrender to the growling Bulldogs.
- 28—Oh, how sweet is victory! Assembly and matinee dance.
- 29—Dargon Chimes ring out to student body.
- 30—Students rally to the rally at Lewiston.

OCTOBER

- 2—North Cache beats the plucky Preston crew.
- 5—The spirit of victory is still in the air and everyone is floating on clouds.
- 7—A world renowned typist exhibits his ability to type classes.
- 27—Two bullet holes discovered in the

AGENTS

Kelvinator Refrigerators
and Washers
S and H
Electric Ranges

SMITHFIELD IMPLEMENT
COMPANY
Smithfield, Utah

LEVEN'S

The Store of
Quality - Style - Price
MEN'S AND BOYS'
Complete Outfitters

Shoes and Hose
For the Entire Family

Home of

RED CROSS SHOES
Logan, Utah

journalism room windows shot from an unknown source—can it be that someone doesn't approve of what the journalism class prints in the Norcachian? We wish they would let us know in a more sociable way.

NOVEMBER

- 3—Edward Markem makes a saxophone talk.
- 6—Alumni Day—and a great success.
- 13—The school sends "big four" to Provo for journalistic convention.
- 16—Seniors part with their pennies for senior rings and pictures.
- 20—The photographer is still looking through a camera at students, a kind of peek-a-boo—only they say he is taking pictures.
- 24—Everyone expresses sorrow because of the death of Alyce Johnson, school mate and dear friend.
- 25—Turkeys, ducks, orchestra, queen, and attendants make a perfectly delectable Harvest Ball.

DECEMBER

- 3—New microphone in the gym. That means "hot stuff" and many dances.

PLANT AUTO COMPANY

"Quality Counts"

Plant Service Station
"East Side of Highway"

Our Gas and Oils Give Your Motor
the Pep
We Handle Only the Best

GOOD SERVICE

Richmond, Utah

Phone 9

THE BEST
 in
 DRUG STORE MERCHANDISE
 and
 SODA FOUNTAIN SERVICE

VAN DRUG CO.

H. O. VAN ORDEN, Mgr.

SMITHFIELD, UTAH

The Rexall Store

LOGAN HARDWARE CO.

Distributors for

Bennett's Pure Paint



Rawlings Athletic Goods

45 North Main St.

Logan, Utah

Bagley Service Station

Dealer in

TEXACO PRODUCTS
 FIRESTONE TIRES AND BATTERIES

Marfak Lubrications

Richmond, Utah

Phone 83-J

WINN'S CONFECTIONARY

Smithfield, Utah

Dealers in

Sunfreeze

The Better

ICE CREAM

8—Oh! are my eyes deceiving me?
 Surely not trophies in the trophy
 case?

13—Fare thee well, basketball team;
 "May it be fair sailing on your trip
 through Idaho."

14—"Guess Again" — with Joe Allen
 putting Eddie Cantor in the shade.

23 to Jan. 4—Students spend eight days
 at "Home Sweet Home."

JANUARY

7—The German Club just practiced an'
 practiced an' practiced 'cause they
 knew all the time that they were go-
 ing to give a good assembly.

18—Eight-ninths of the students have
 been coming in late; can it be a
 prank on the teacher?

19—John Faye, magician, makes things
 disappear there and come out here.

FEBRUARY

19—La Senias invite a club from South
 Cache to banquet with them.

22—All North Cachians take in the as-
 sembly program by the Imperial
 Glee Club.

MARCH

2—The speech class tip off a successful
 assembly.

- 12—Junior Prom—What a hop! All girls had new dresses, and even the boys washed their necks.
- 16—We have a big assembly or "get together" sponsored by freshies.
- 17—All students do their part to make a successful mixer or hop.
- 23—The Smithfield Junior High entertains with "Huckleberry Finn." It was quite a drama, too.
- 26—"Gypsy Rover" marks history in North Cache when it astonishes on-lookers with magnificence.

APRIL

- 1—POLICE BULLETIN—North Cache discontinues school until next fall, by request of the students! (April Fool)
- 9—Four men and one girl dressed in white, call themselves "White Hus-sars" present their lyceum, and can they give, and did we take it!
- 23—Mothers come, fathers come, and what a day! Accomplishments of every class are on display, and at night we have a regular gala time.

I. G. A. STORES
Richmond, Utah

**DEALERS IN MEATS AND
GREEN GROCERIES**

Where Prices and Service
Are Right

H. F. OLSEN
Proprietor

Phone 41

CARDON JEWELRY CO.

LOGAN, UTAH

"For More Than Fifty Years"

EDWARDS FURNITURE CO.

"Cache Valley's Furniture Store"

26 South Main

LOGAN, UTAH

D. W. HESS AND SONS

Confections

LOGAN, UTAH

SMITHFIELD ROLLER MILL

Phone 13-W

Manufacturers of

STOCK, POULTRY, HOG AND
DAIRY FEED

SEAGULL Superior Quality FLOUR

All Kinds of Cereals

Coal and Conoco Gas and Oils

Satisfied Customers Keep Us in Business

COMMERCIAL
NATIONAL BANK

Smithfield, Utah

Compliments of
TANNER BROS.

Salt Lake City, Utah

CLASS RINGS

Casper's

ICE
CREAM

Printing, Covers and Plastic
Binding

by

STEVENS & WALLIS, Inc.

SALT LAKE CITY

LARSEN & BIRCH

Wholesale



Candy Manufacturers
and Jobbers



LOGAN, UTAH

MAY

- 1—All the trios, choruses and band take a hop, skip and a jump, and land in Tremonton to compete for state music contest. "Wishes for success."
- 7—Black and White Day, cows and more cows—but that's OK—we get out of school to celebrate. All seniors spend the day lookin' over the prospects of next year's life at the U.S.A.C. Such activity is commonly known as "Senior Day."
- 11—An art assembly—and an art assembly it was—and how!
- 14—No school—but just for one day! My neighbor said it was Health Day.
- 20—Every one who has won awards gets awards . . . and "blow me down" if they didn't deserve 'em.
- 28—The last time friends and school mates meet as we bid farewell to teachers and all concerned, but may there be another meeting in our hearts. Our school has memories that we cherish and may our happenings be remembered, as we softly say, "Fare Thee Well—God Bless You," and may we meet again.

UNION KNITTING MILLS COMPANY

First West and Center Streets
LOGAN, UTAH

WE TAILOR TO YOUR MEASUREMENTS
A Complete Line of Knitwear, Sweaters, Slip-ons, etc.

Styles Are the Very Latest — Workmanship Cannot Be Excelled
Quality Superior

Do Not Fail to See This Wonderful Line
Now on Display

SPECIAL DISCOUNTS GIVEN TO STUDENTS

—PERFECT SWIMMING—

LOGANA PLUNGE

THE POOL THAT IS DRAINED, SCRUBBED, AND CLEANED
EVERY NIGHT

To insure absolute purity and water free of germs
every gallon of water that enters the pool is
chlorinated by a scientific machine.

Exclusive Agents for
KING, F. H. REYNOLDS, CLEVELAND
and REGENT BAND INSTRUMENTS

THATCHER MUSIC CO.

12 West Center

LOGAN

UTAH

Compliments of

CACHE VALLEY ELECTRIC

Logan, Utah

Dealers in All Electrical Appliances



The most favorable aspects to youth
and chic lies in the priceless quality of
individuality, which is yours when you
have a Loganknit.

**LOGAN SPORTWEAR
COMPANY**

Logan, Utah



STRENGTH OF CHARACTER—

Strength of character and high purpose make the honor graduate. On these qualities close banking relationships are based.

We look forward to numbering among our valued customers many of the young graduates of our North Cache High School in the distant future.

Richmond Branch

FIRST SECURITY BANK OF UTAH, N. A.

Member of

FEDERAL DEPOSIT INSURANCE CORPORATION

THEURER'S STORE

THE STORE WITH THE
FRIENDLY DOOR

Lewiston, Utah

Hart Schaffner and Marx Suits

Bostonians Shoes

Stetson Hats

Interwoven Hose

Headquarters for the
WELL-DRESSED MAN

JOHN WILSON INC.

23 North Main

LOGAN, UTAH

ALWAYS ASK FOR
"Sonny Boy Bread"
ROLLS — CAKES — COOKIES
and PASTRIES

SMITHFIELD BAKERY

Phone 25-J

We Cater to Parties

MODERN PHOTO STUDIO

PRESTON, IDAHO

More than 95 per cent of the photographic work for this book was made by N. G. Peterson.

We have the negatives on file should you wish photos finished.

A Good Bank

in a

Good Town



LEWISTON STATE BANK

Lewiston, Utah

Member Federal Deposit Insurance
Corporation

GILT EDGE FLOUR MILLS

Phone 90-W

Manufacturers of

Gilt Edge Quality Flour

"It Stands the Test"

WE DO GRIST WORK

All Kinds of Baby Chick Feed, Poultry
Supplies, Dairy Feed, Chopping



Compliments of

**ANDERSON'S LUMBER
COMPANY**

Smithfield, Utah



A Tribute to Alyce Johnson and Lorrin Buttars . . .

. . . In the passing of Alyce Johnson and Lorrin Buttars during the school year, North Cache Student Body extend their deepest sympathy to their families. As the last day came, and they passed to the greater life, their souls were at peace with themselves because of their unquestionable acceptance of God's will.



Appreciation . . .

. . . With one hand extended in parting, the members of North Cache student body thank their leaders for their services, assuring them that the work of each in his own field is appreciated, and that his example is a challenge to incoming leadership.

. . . Another hand is extended in welcome to the new student executives . . . To all are given sincere wishes of continued success that make a life of service.



In Parting . . .

. . . As the seniors leave our high school to enter the aisle of commencement of life with its many opportunities, this school year becomes history. May this volume of the 1937 Polaris be a reminder and help relive the many joyous days spent here at the high school. In it we have tried to include those things which you will want to remember.

. . . During this year Cupid has made a record at North Cache by uniting many students in marriage. They are Armina Jonas, Afton Barker, Faye Reese, LaFae Hansen, Josie Reeder and Paul Ricks.

. . . Many students have left to attend other schools, some of them are Donald Williams, Cleone and Leora Gunnell.

—Cleo Christensen
Editor

