



ROOM TO
learn &
grow

Cache County School District 2023 Bond



41 school districts in Utah

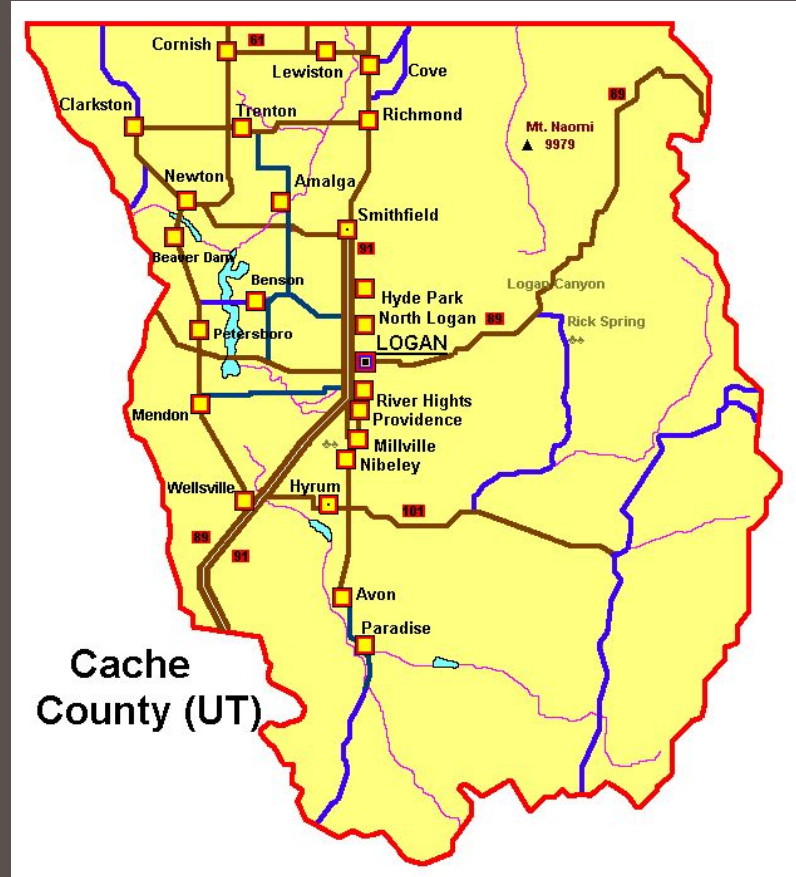
Cache County is the eleventh largest in student population.

- Nearly 20,000 students
- 25 schools



27 COMMUNITIES SERVED

Amalga, Avon, Beaver Dam, Benson, Cache Junction, Clarkston, College Ward, Cornish, Cove, Hyde Park, Hyrum, Lewiston, Mendon, Millville, Mt. Sterling, Newton, Nibley, North Logan, Paradise, Petersboro, Providence, Richmond, River Heights, Smithfield, Trenton, Wellsville, and Young Ward



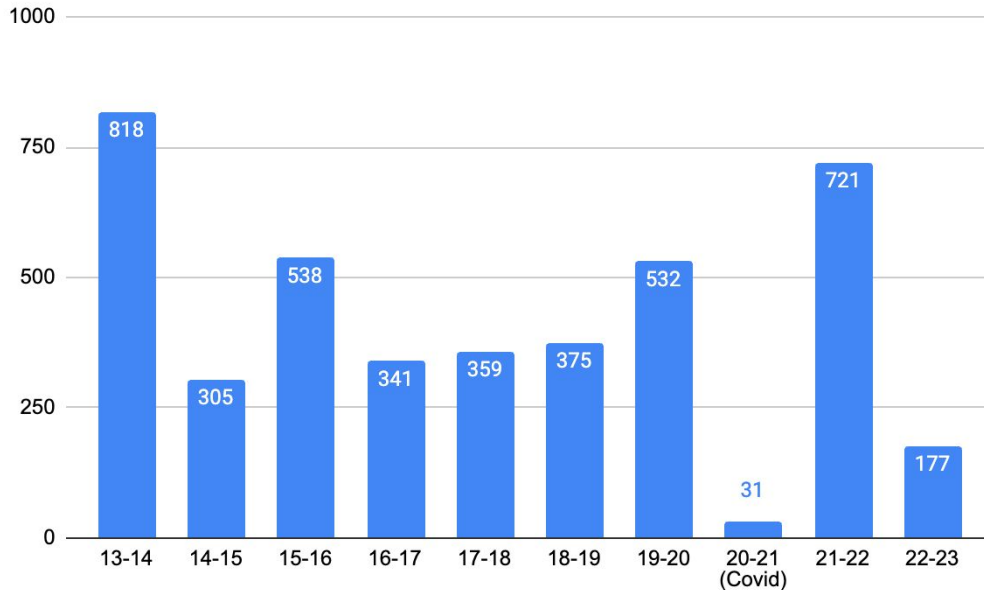
2013 BOND • \$129 MILLION

- New high schools in Millville and North Logan
- Seismic upgrades/add-ons to Providence, Millville, Summit, Sunrise Elementary Schools
- New elementary school in Lewiston
- Conversion of Cedar Ridge, Willow Valley, and White Pine from middle to elementary schools
- Retirement of Lewiston, Wellsville, and Park Elementary Schools
- New Cache High alternative high school



DISTRICT GROWTH

4,197 students in the last ten years





School Buildings Over Capacity and Portable Classrooms

- 11 elementary schools over capacity
- One middle school over capacity
- 38 portable classrooms

CCSD SCHOOL BUILDINGS OPERATING OVER CAPACITY

	% CAPACITY 2021-22 SCHOOL YEAR	% CAPACITY WITH ALL-DAY KINDERGARTEN FULLY IMPLEMENTED	NUMBER OF PORTABLE CLASSROOMS BEING UTILIZED
Birch Creek ES	109%	117%	2
Canyon ES	113%	122%	5
Cedar Ridge ES	103%	110%	2
Heritage ES	121%	130%	4
Lincoln ES	104%	109%	2
Millville ES	107%	113%	3
Nibley ES	120%	127%	4
Providence ES	108%	115%	0
River Heights ES	115%	126%	6
Summit ES	102%	109%	2
Sunrise ES	111%	118%	4
Spring Creek MS	113%	113%	4

This is the data considered by the Building Task Force Committee in 2022.

ALL-DAY KINDERGARTEN

The State of Utah recently funded all-day kindergarten as an option for parents.

Only Partially Available

Canyon Elementary (Hyrum)

Millville Elementary

Mountainside Elementary (Mendon)

Nibley Elementary

Summit Elementary (Smithfield)

White Pine Elementary (Richmond)

Not Available

Birch Creek Elementary (Smithfield)

Cedar Ridge Elementary (Hyde Park)

Heritage Elementary (Nibley)

Providence Elementary

River Heights Elementary



BUILDING TASK FORCE

- How to resolve 11 elementary schools operating above capacity
- How to provide access to all-day kindergarten for all 27 communities
- How to resolve three middle schools feeding four high schools, and the inability to expand our smallest middle school, which is operating above capacity
- How to meet the needs of the community without raising tax rates
- How to best position the district for future growth, especially in our fastest growing communities

2023 BOND RESOLUTION • \$139 MILLION

- Build two new middle schools in Nibley and Hyde Park
- Convert Spring Creek Middle School into an elementary school
- Build a new elementary in Hyde Park
- Implement safety and security enhancements at all 25 schools



CACHE COUNTY
SCHOOL DISTRICT

NEW MIDDLE SCHOOL

MAIN ENTRY



CACHE COUNTY
SCHOOL DISTRICT

NEW ELEMENTARY SCHOOL

FRONT ELEVATION

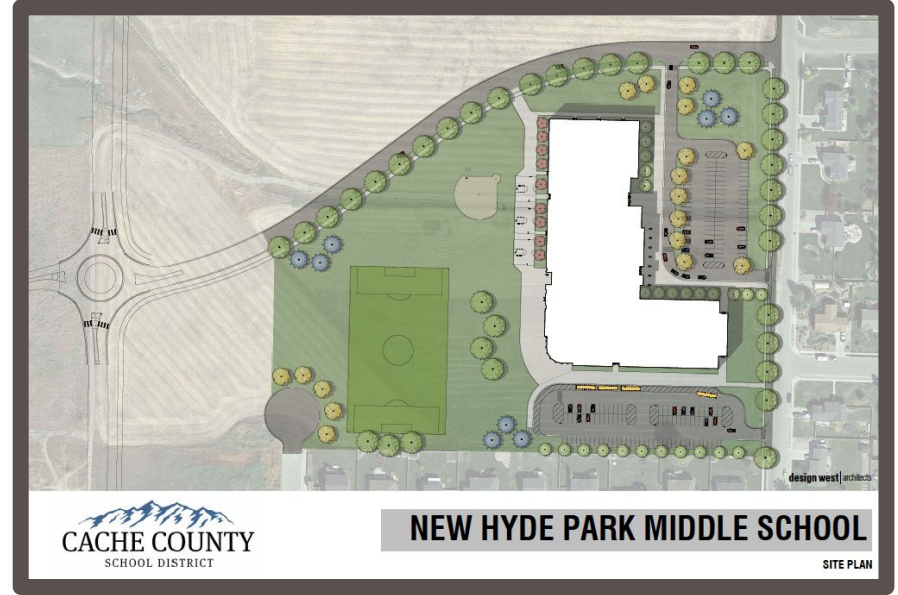
ADVANTAGES

- Allows us to move sixth grade back to a middle school environment
- Solves capacity problems at the elementary and middle schools
- Provides access to all-day kindergarten for all 27 communities
- Provides four middle school feeders for the four high schools
- Meets the needs of the community without raising tax rates
- Positions the district for future growth, especially in our fastest growing communities

WHAT EXACTLY ARE THE BUILDING PROJECTS PROPOSED BY THIS BOND?



NEW HYDE PARK MIDDLE SCHOOL



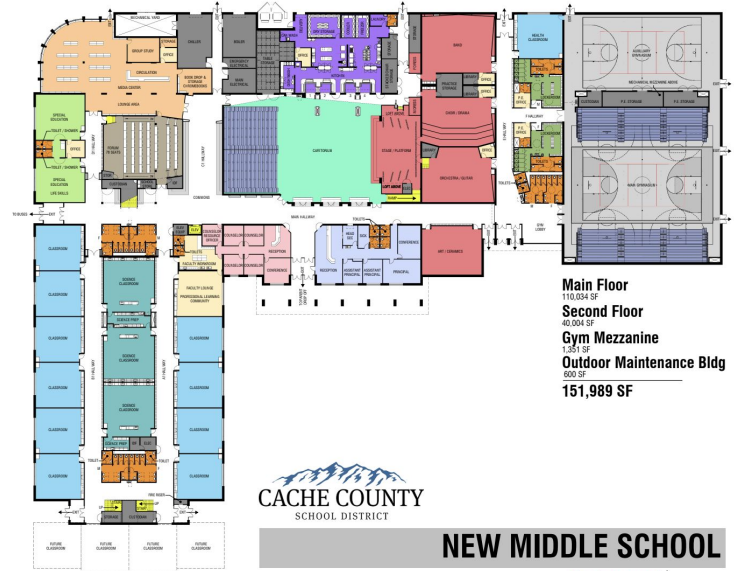


design west | architects

CACHE COUNTY
SCHOOL DISTRICT

NEW MIDDLE SCHOOL

MAIN ENTRY



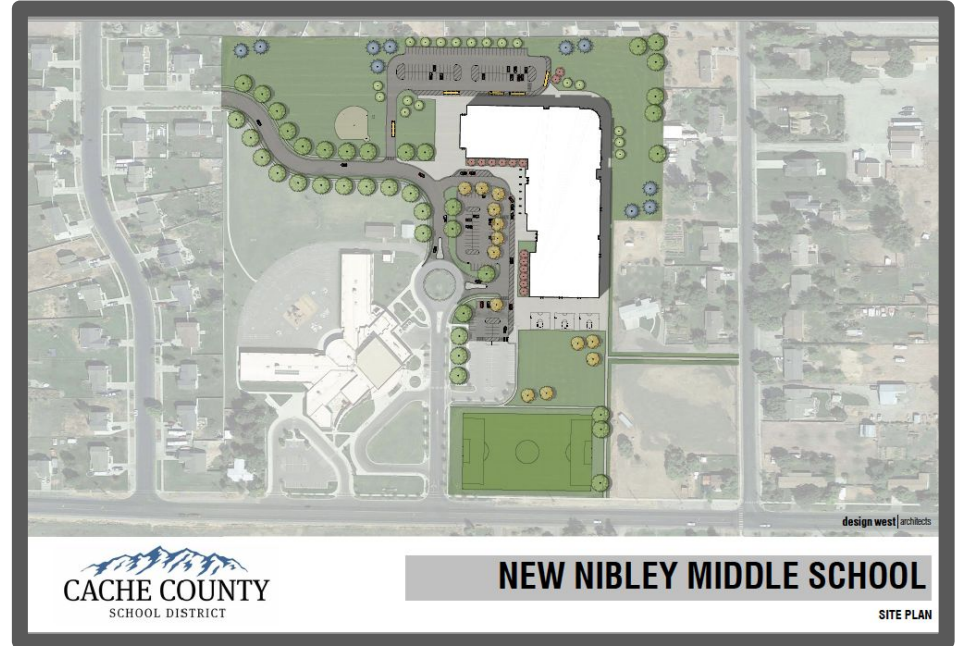
Main Floor
110,034 SF
Second Floor
40,004 SF
Gym Mezzanine
1,351 SF
Outdoor Maintenance Bldg
800 SF
151,989 SF

CACHE COUNTY
SCHOOL DISTRICT

NEW MIDDLE SCHOOL

design west | architects

NEW NIBLEY MIDDLE SCHOOL

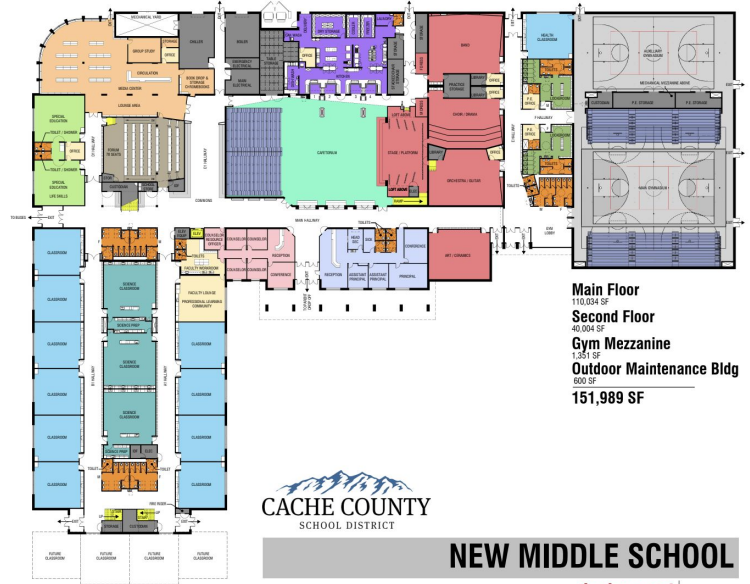




CACHE COUNTY
SCHOOL DISTRICT

NEW MIDDLE SCHOOL

MAIN ENTRY



NEW HYDE PARK ELEMENTARY SCHOOL

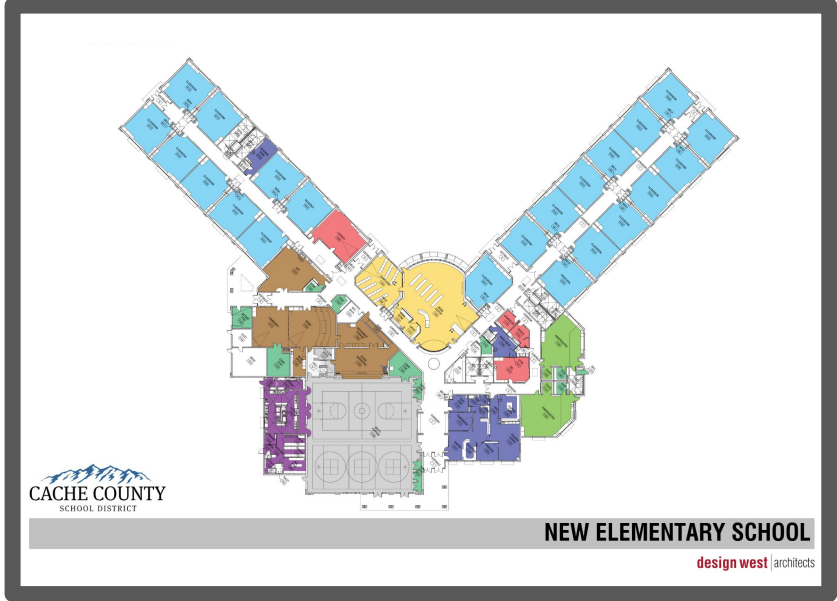


design west | architects



NEW ELEMENTARY SCHOOL

FRONT ELEVATION



NEW ELEMENTARY SCHOOL

design west | architects

SPRING CREEK MIDDLE TO ELEMENTARY CONVERSION



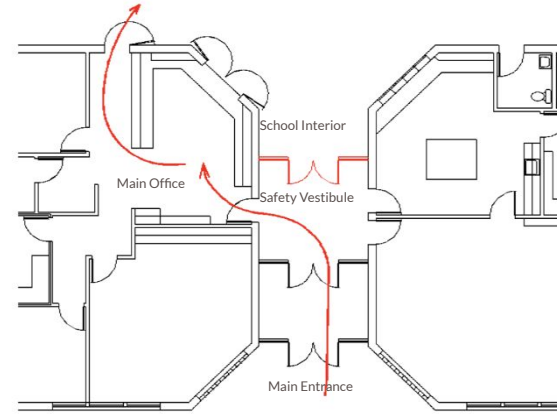
SCHOOL SAFETY



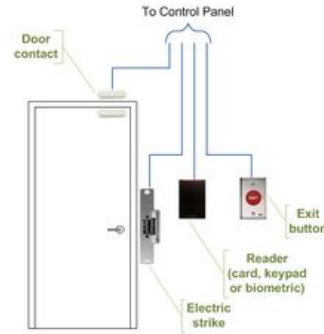
Standard Response Protocols



Enhanced Communication



Controlled Entry



Access Control



Surveillance

BOND RESOLUTION

To complete these projects, the Cache County Board of Education is placing a \$139 million bond resolution on the ballot.

If approved by voters, this bond would be paid off over the subsequent 20 years.



WILL MY TAX RATE INCREASE?

Property owners can anticipate no tax rate increase related to this bond.

By layering future payments with existing payments, the tax rate can remain at current or lower levels.

WILL MY TAXES INCREASE?

- Only if the taxable value of your property increases. Otherwise, the amount a property owner currently pays would not increase.
- To service the district's bond debt, the estimated annual tax for an average home of \$524,000 would be \$234 per year and the maximum tax for a business of similar value would be \$426 per year.
- The number of years property owners pay a tax for bonds would be extended.

QUESTIONS?