



# Ridgeline High School

## Student Parking Contract

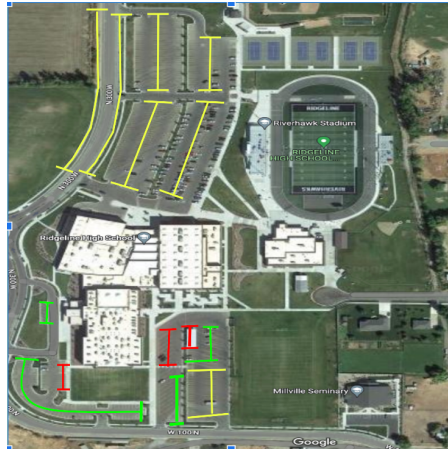
Below you will find a map of Ridgeline High School with its associated parking lots.

**Yellow:** Student Only Parking

**Green:** Faculty and Visitor Only Parking

**Red:** Administration and Busing Only Parking

**We will not be selling priority parking passes this year. Parking will be on a first come, first serve basis.**



Our parking is monitored by both staff and surveillance cameras. Please note that if you choose to park in areas not dedicated to student parking, you could receive a ticket. The fees associated with tickets are as follows:

First Ticket:	\$20.00
Second Ticket	\$20.00
Third Ticket	\$30.00+ Boot (all fees must be paid in order for boot to be removed.)
Each Additional	\$30.00

*If the boot is damaged by individuals trying to remove it from their vehicle, a \$150.00 replacement fee will be assessed.*

In an effort to ensure that all students are aware of the parking regulations, and to effectively monitor the grounds, we ask that you provide your name, vehicle make, model and color and license plate number.

Student First and Last Name: \_\_\_\_\_

Primary Vehicle Make: \_\_\_\_\_ (Ford, Chev, Toyota, etc.)

Primary Vehicle Model: \_\_\_\_\_ (F-150, Camry, Accord, etc.)

Primary Vehicle Color: \_\_\_\_\_

License Plate #: \_\_\_\_\_

*I have read the above information and understand the parking policy at Ridgeline High School. I agree to only park in the areas indicated in yellow. I understand that parking is limited and is on a first come, first serve basis.*

\_\_\_\_\_ (signature) \_\_\_\_\_ (date)

*Please print, sign, and submit this form to someone in the front office at Ridgeline High School.*