

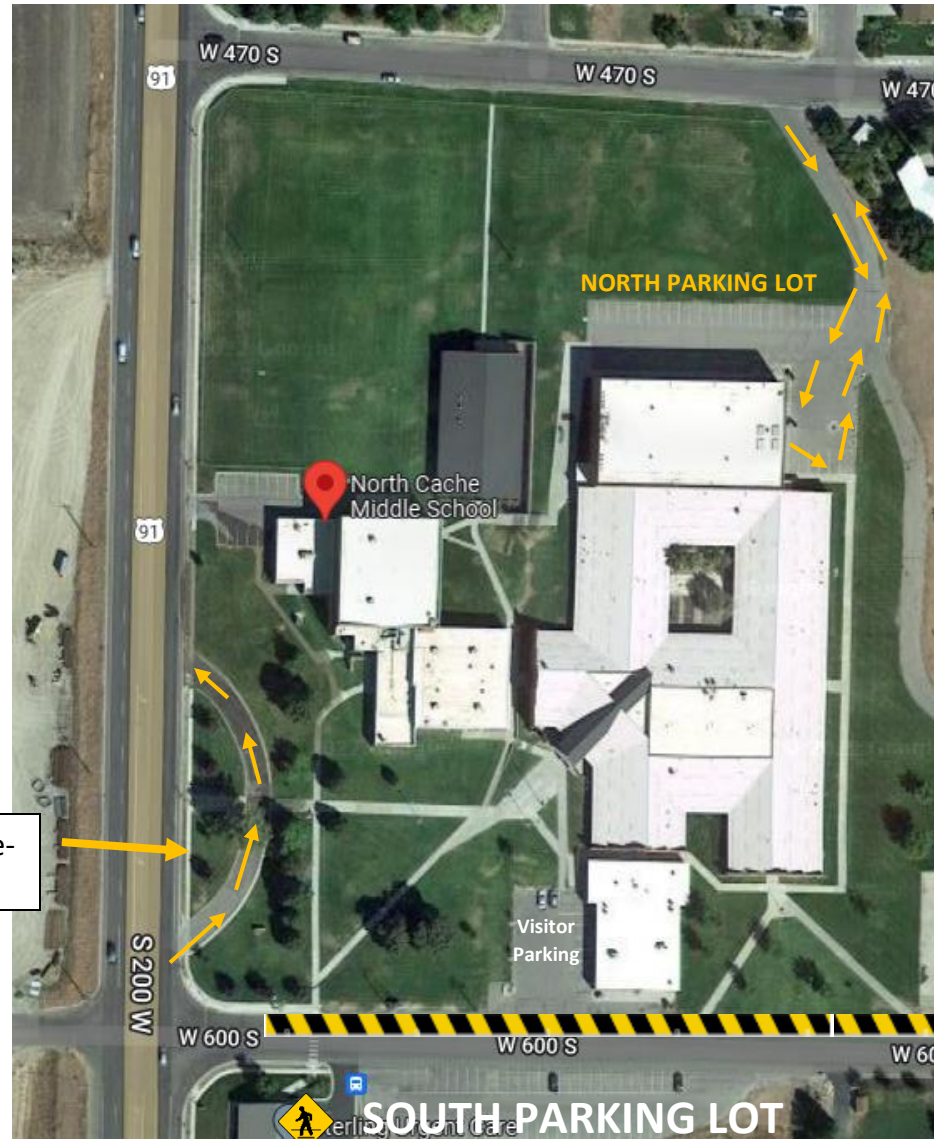
AM Drop Off Areas:

North Parking lot/ NE door: after 8am, these doors will be locked. Therefore, students need to check in and get a late slip from the front office using main entrance doors.

Circle Drive: enter South end and exit on North end. **Do not use in the PM**

South Parking Lot: (not preferred)

Parents should park and walk students across the road using crosswalk by the bus stop.



PM Pick Up Areas:

North Parking lot: Preferred Pick up Area: Students can be picked up here

Circle Drive: DO NOT USE IN THE PM- Buses use this to load students in the afternoon.

South Parking Lot: 2ND choice, not preferred: Parents should park and walk students across 600 S (using crosswalk by bus stop). Visitor Parking should not be used to drop off or pick up students.

Visitor Parking available from
M-Th 8:00am -2:15pm
F 8:00am-1:15 pm

Circle Drive-
AM only

SCHOOL BUS LOADING



- **Visitor Parking should not be used to drop off or pick up students**
- Bus loading Zone & Circle Drive; please do not use this area to pick up students. M-TH 2:15- 3:00pm F 1:00-1:45pm.