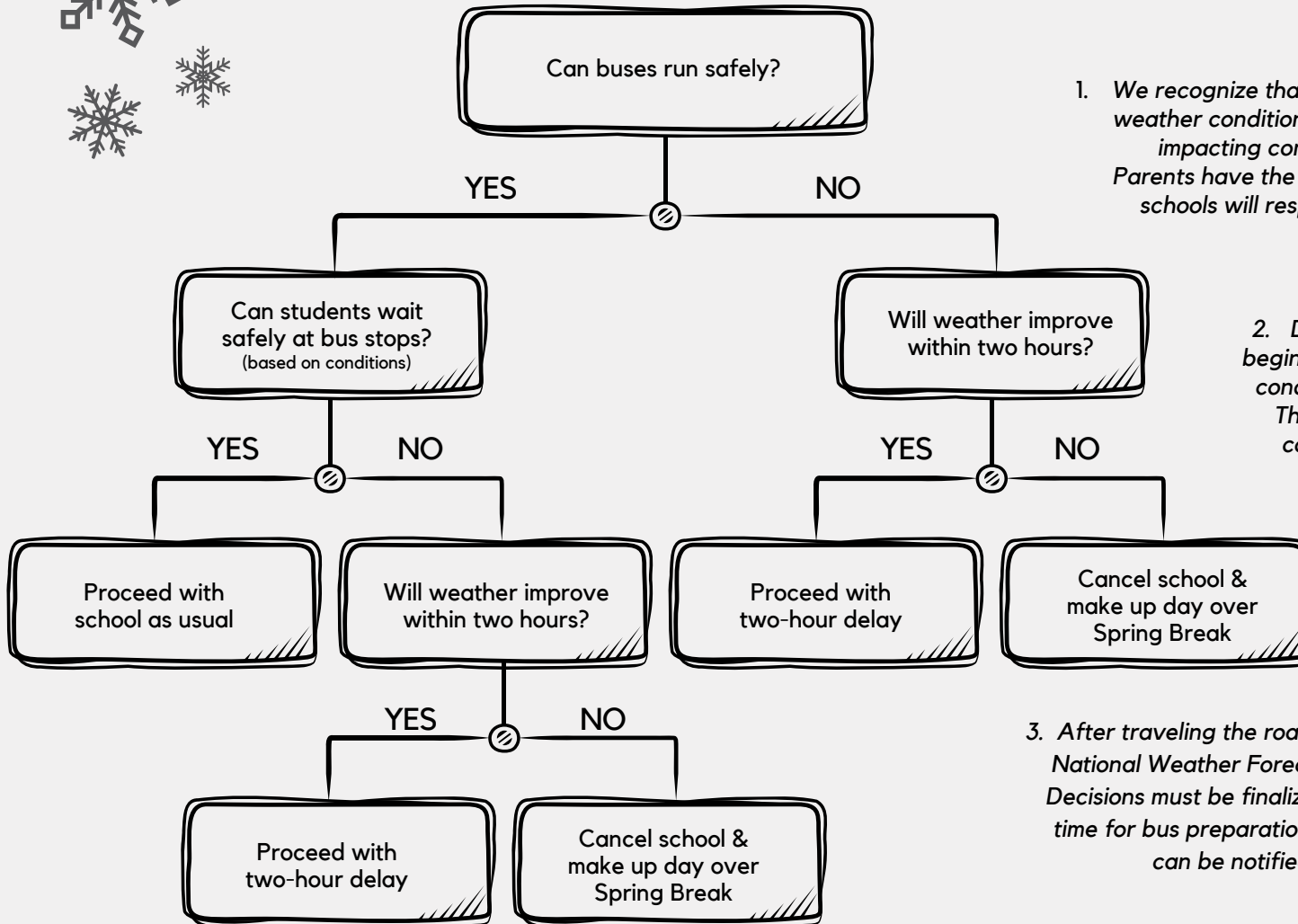


SNOW DAY FLOWCHART



1. We recognize that within our large county, weather conditions may vary dramatically, impacting communities differently. Parents have the ultimate decision and schools will respect their decision.

2. District transportation crews begin driving and monitoring road conditions as early as 4:00 a.m. They also consult with local, county, and state officials.

3. After traveling the roads and consulting with the National Weather Forecast, a decision is made. Decisions must be finalized by 5:30 a.m. to allow time for bus preparation and to ensure families can be notified by 6:00 a.m.

4. If buses have begun picking up students, a decision cannot be reversed due to weather changes.

