

SCHOOL DISTRICT OF LA CROSSE INSTRUCTIONAL DEPARTMENT



JEFF FIMREITE
ASSOCIATE SUPERINTENDENT
OF INSTRUCTION



KRISTI ARENZ
INSTRUCTIONAL
PROJECT SPECIALIST



CURT TEFF
DIRECTOR OF
COMMUNITY SERVICES



KARI HUTH
DIRECTOR OF CURRICULUM,
INSTRUCTION & ASSESSMENT



JEREMY SCHOONOVER
SUPERVISOR OF
INFORMATION TECHNOLOGY



STACEY EVERSON
DIRECTOR OF SECONDARY
EDUCATION



AIMEE ZABROWSKI
DIRECTOR OF STUDENT
SERVICES



SHELLEY SHIREL
DIRETOR OF ELEMENTARY
EDUCATION

MIDDLE SCHOOL PRINCIPALS
KELLIE SCHMITZ, LOGAN MS/SOTAI
JON BAUDEK, LONGFELLOW
QUARTELL ROBERSON, POLYTECHNIC

HIGH SCHOOL PRINCIPALS
JEFF AXNESS, CENTRAL
WALLY GNEWIKOW, LOGAN HS
QUARTELL ROBERSON, POLYTECHNIC



DR. BRITTA ROTERING
SUPERVISOR OF CAREER &
TECHNICAL EDUCATION



GREG FENTON
SUPERVISOR OF SPECIAL
EDUCATION

ELEMENTARY PRINCIPALS
ERIC CHECK, EMERSON
JENNA FERNHOLZ, HAMILTON/SOTA I
AMY OLIVER, HINTGEN
GARRETT FISCHER, NORTH WOODS
SARAH BRADLE, NORTHSIDE/CM
AMANDA DURNEN, SOUTHERN BLUFFS
DANA EIDE, SPENCE
JAC LYGA, STATE ROAD
OSCAR URIBE, SUMMIT

SUPERVISORS AND CONTENT AREA COORDINATORS

After School Programs - Shelley Shirel (Hogan)
Cultural and Family Connections - Stacey Everson (Hogan)
English Language Arts (K-5) - Melissa Ender (Hogan)
English Language Arts (6-12) - Jill Emerich (Longfellow)
English Language Arts (9-12) - Kate Keeney (Logan HS)
English Learners - Olga Dedkova (Hogan)
Health/Physical Education - Melissa Norman (Logan MS)
High Performance Learning - Shelley Shirel (Hogan)

Library Services (K-5) - Lisa Altreuter (Emerson)
Library Services (6-12) - Kristi Moulton (Logan HS)
Math (K-5) - Jac Lyga (State Road)
Math (6-12) - Kim Novak (Logan MS)
PBIS - Curt Teff (Hogan)
Performing Arts (K-5) & Drama (6-12) - Anna Taylor (Logan MS)
Performing Arts (6-12) - Brian Renkas (Logan HS)
Pre-Kindergarten Programs - Shelley Shirel (Hogan)

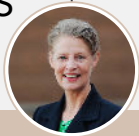
Science (K-5) - Kyle Allen (Northside)
Science (6-12) - Timothy Sprain (Logan MS)
Special Education - Greg Fenton (Hogan)
Social Studies (K-5) - Jean Ruprecht (State Road)
Social Studies (6-12) - Tammy Gruen (Central)
Summer School - Garrett Fischer (North Woods)
World Languages - Cassie Tolvstad (Logan HS)
Visual Art - Casey Scheurell (Southern Bluffs)

SCHOOL DISTRICT OF LA CROSSE SCHOOL ADMINISTRATION

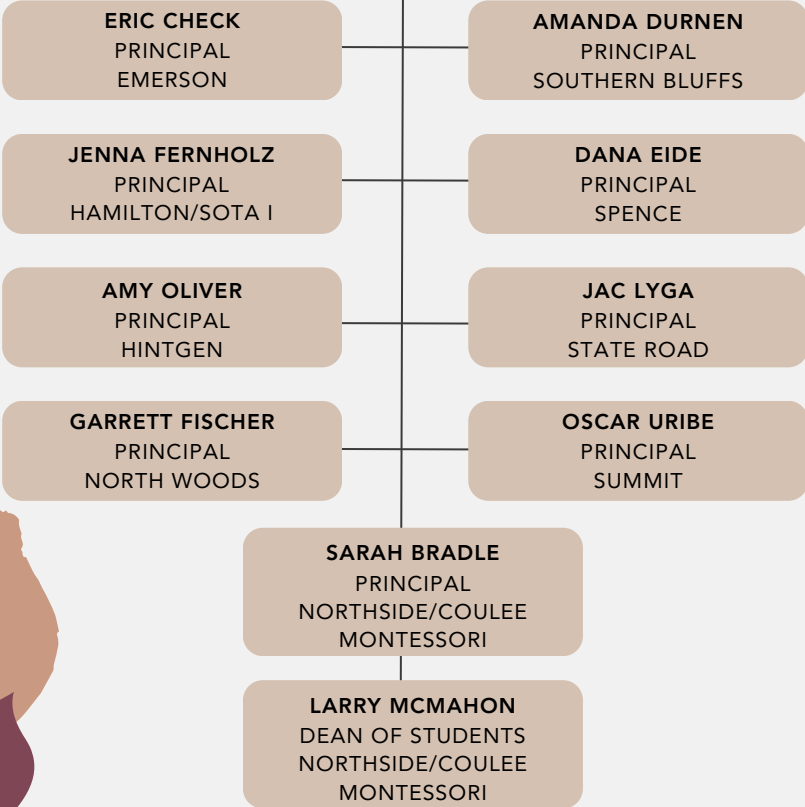


JEFF FIMREITE
ASSOCIATE SUPERINTENDENT
OF INSTRUCTION

ELEMENTARY SCHOOLS



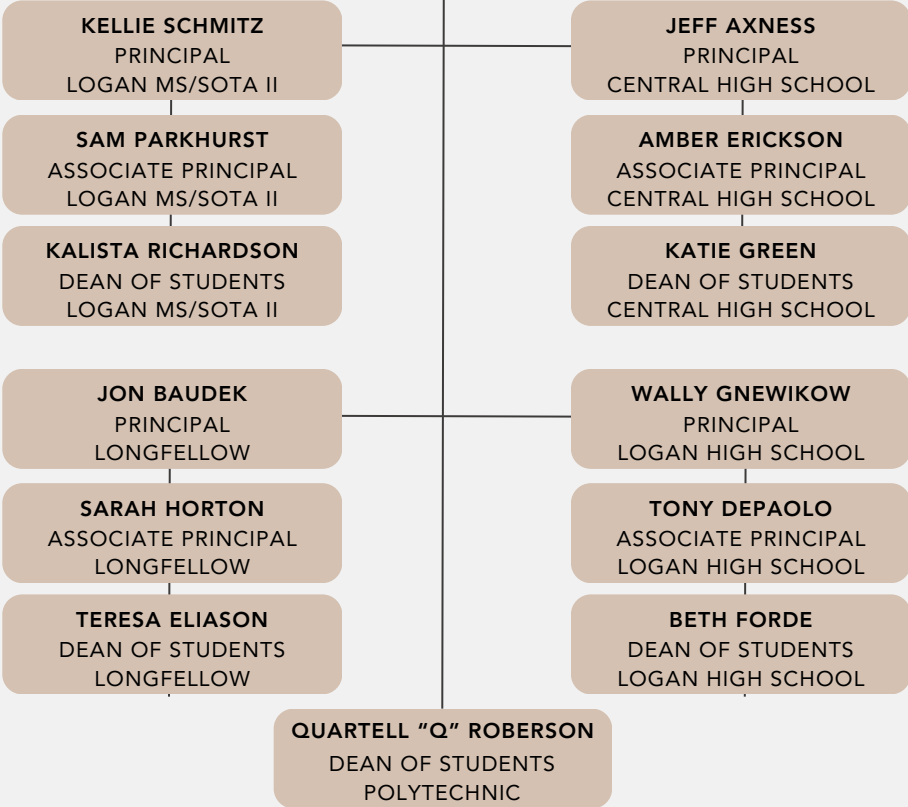
SHELLEY SHIREL
DIRECTOR OF ELEMENTARY
EDUCATION



SECONDARY SCHOOLS



STACEY EVERSON
DIRECTOR OF SECONDARY
EDUCATION



ASSOCIATE SUPERINTENDENT OF INSTRUCTION
JEFF FIMREITE
jfimreit@lacrossesd.org

- Administrator Mentor Program
- Administers educational programs for the district
- All duties as assigned by the Superintendent
- Communication and Public Relations
- Climate Surveys - Staff and Student
- Educational policy direction and formation
- Educator Effectiveness
- Guides District continuous improvement
- Provides leadership in establishing system-wide goals
- Reporting progress towards District policies
- Research & Development
- Site Planning
- Supports actualization of comprehensive program plan

INSTRUCTIONAL PROJECT SPECIALIST
KRISTI ARENZ
krarenz@lacrossesd.org

- Educator Effectiveness
- Intradistrict Transfers
- Pupil Nondiscrimination Report
- Qualtrics
- Research & Development
- Duties as assigned by the Associate Superintendent
- Title II-A
- Virtual Backpack

DIRECTOR OF COMMUNITY SERVICES
CURT TEFF
cteff@lacrossesd.org

NICOLE STEFFENS, ADMIN. ASSISTANT
nsteffen@lacrossesd.org

- Alternative Education
- Alternative Placements
- Community Schools
- Disproportionality
- Graduation Alternatives
- Homebound Programming
- Homeless Placement
- Juvenile Detention Center
- Provides leadership in establishing system-wide goals
- Site Planning
- Supports actualization of comprehensive program plan

DIRECTOR OF CURRICULUM, INSTRUCTION, AND ASSESSMENT
KARI HUTH
khuth@lacrossesd.org

LISA RENSTROM, ADMIN. ASSISTANT
lrenstro@lacrossesd.org

ANDI PARKER, ADMIN. ASSISTANT
mparker@lacrossesd.org

- Content Area Supervision
- Curriculum
- District Assessment Coordinator
- Homebased Education
- New teacher orientation
- Online Learning (CRVA & eScholars)
- Professional Development
- Software Platforms (Educlimber, Canvas, Xello, etc.)
- Student Teaching Contracts
- Teacher Mentor Program
- Title I & IV

DIRECTOR OF ELEMENTARY EDUCATION
SHELLEY SHIREL
sshirel@lacrossesd.org

ANDI PARKER, ADMIN. ASSISTANT
aparker@lacrossesd.org

- Educator Effectiveness – Guide, Mentor and Supervise Elementary Principals
- Elementary Continuous Improvement Planning, Executing and Monitoring
- Leads/Directs All Elementary School Programming
- Ongoing Community Engagement
- High Performance Learning
- Pre-Kindergarten Programs

SUPERVISOR OF TECHNOLOGY SERVICES
JEREMY SCHOONOVER
jschoono@lacrossesd.org

STACEY PIERCE, ADMIN. ASSISTANT
spierce@lacrossesd.org

- Administrative Computing
- AV Equipment & Videos
- Instructional Computing
- Library Media Centers
- Mail

- Printing/Copying
- Telephones & Lines
- Television Media
- Webpage
- Welcome Center

DIRECTOR OF SECONDARY EDUCATION
STACEY EVERSON
severson@lacrossesd.org

RACHEL MOORE, ADMIN. ASSISTANT
rmoore@lacrossesd.org

- Educator Effectiveness – Guide, Mentor and Supervise Secondary Principals
- Leads/Directs All Secondary School Programming
- Ongoing Community Engagement
- Secondary Continuous Improvement Planning, Executing and Monitoring
- Academic & Career Planning

- Academies
- Business & Information Technology
- Charter Schools
- Career & Choice Education
- Family & Consumer Education
- School-to-Work Program
- Technology and Engineering

SUPERVISOR OF CAREER AND TECHNICAL EDUCATION
DR. BRITTA ROTERING
broterin@lacrossesd.org

RACHEL MOORE, ADMIN. ASSISTANT
rmoore@lacrossesd.org

- Carl Perkins Grant
- Youth Apprenticeship and Cooperative Programming
- Career and Post-Secondary Development
- Academic and Career Planning

- Career and Technical Education Programming
- Academies - Health Science Academy, La Crosse Engineering Academy, Construction Academy, and more

DIRECTOR OF STUDENT SERVICES
AIMEE ZABROWSKI
azabrows@lacrossesd.org

SUE DWYER, ADMIN. ASSISTANT
sdwyer@lacrossesd.org

SHIRLEY LEVENDOSKI, ADMIN. ASSISTANT
slevendo@lacrossesd.org

- Coordination and Supervision of:
 - Special Education Leadership Team
 - Student Services: Counselors, Psychologists, Social Workers, Nurses
 - English Learner Program
- Budget for Student Services, English Learners, and Special Education
 - WISEGrants: Title III, Flow Through, Preschool, CEIS
 - MA Billing
- 504

- ACCESS Testing
- Additional Staff Requests
- Board and DPI Reports
- Civil Rights Data Collection and Report
- Disproportionality & CCEIS
- Early Childhood Special Education
- Expulsions
- Mediation/Due Process
- Open Enrollment and Intradistrict Transfers
- Professional Development Alignment
- Staffing

SUPERVISOR OF SPECIAL EDUCATION
GREG FENTON
gfenton@lacrossesd.org

TORI FLANDERS, ADMIN. ASSISTANT
tflander@lacrossesd.org

- Alternate Assessments
- Due process paperwork and Skyward, PCSA
- Extended School Year and summer school supports
- Private Schools

- Seclusion/restraint and CPI training coordination
- Special Education Transportation
- Supervision and coordination of itinerant special education staff
- Transition Programming