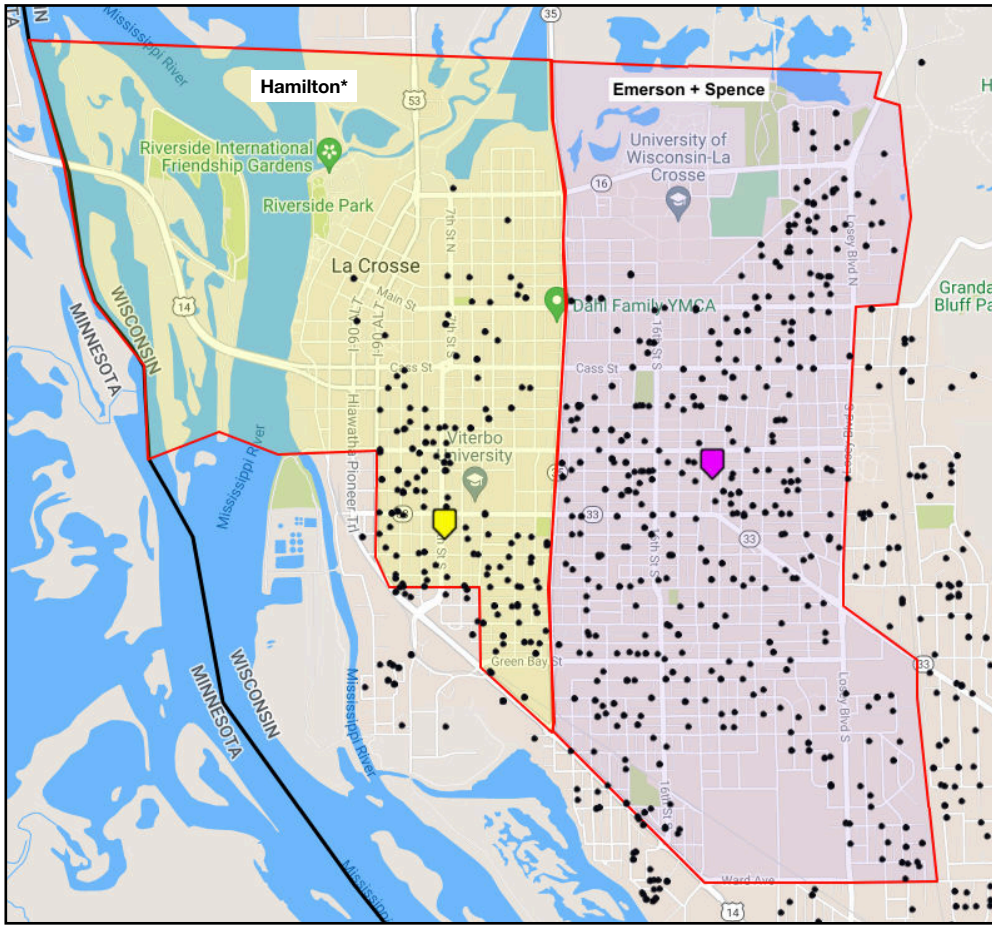


Referendum Option #1: Emerson + Spence

Proposed Boundaries



Hogan Site



Parameters

Parameter	Indicator	Metric
Deferred Maintenance	Reduced deferred maintenance	\$6,323,593
Minimize Impact	Students changing to a new site	628
Minimize Impact/Accessible Schools	Students changing site: closer to the new site	57%
Accessible Schools	Students impacted: within one mile of school	81% → 89%
New or Improved Building	Students impacted: at new building or same site	78%
Budget Deficit	Remaining structural budget deficit	-\$1.6M

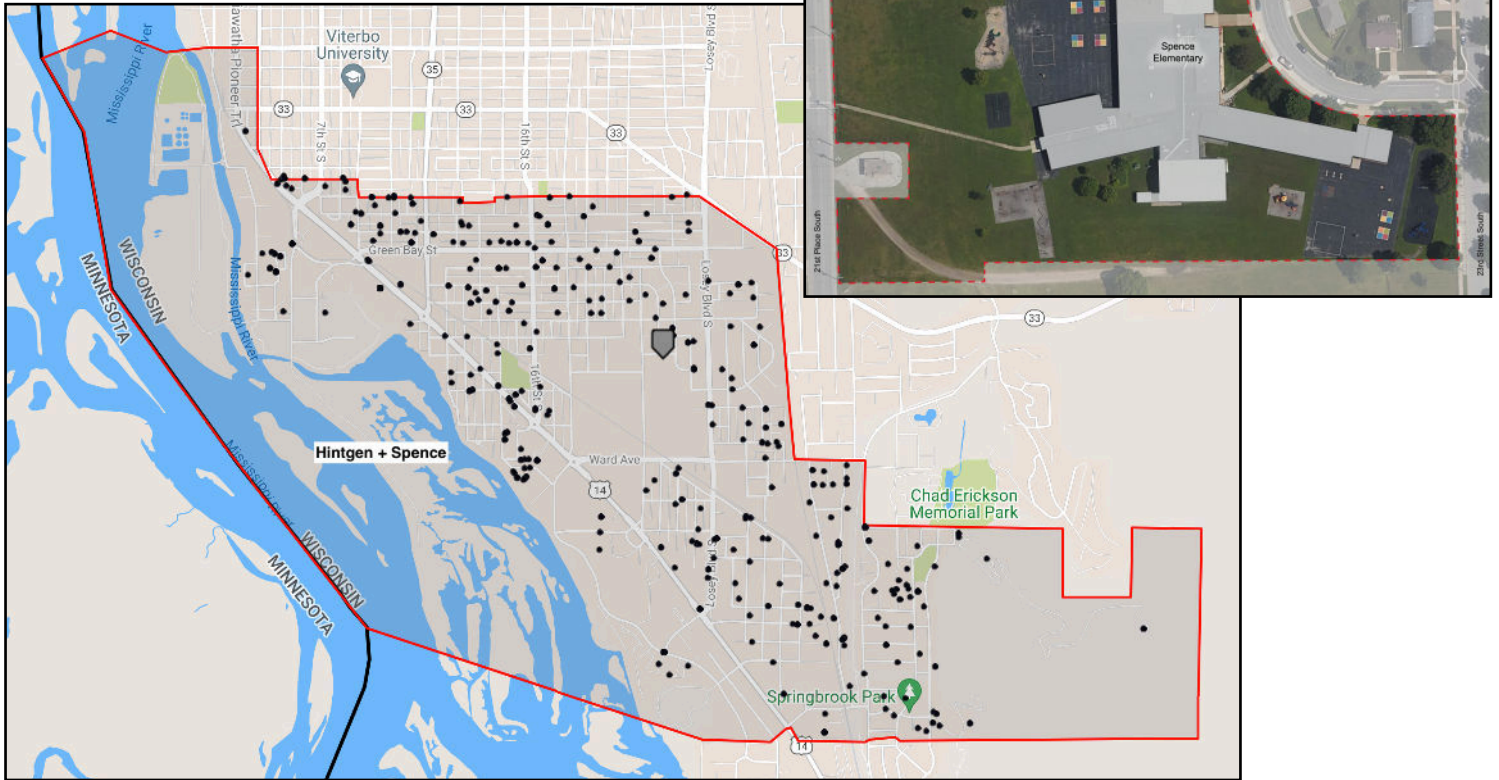
Demographics

Elementary	Enrollment	Capacity	% F/R	% Of Color	% SPED	% 1 Mile	% 2 Miles	Bussing Eligible
Emerson + Spence	491	550	45%	27%	18%	85%	100%	0
Hamilton*	310	418	86%	58%	27%	99%	100%	0
Hintgen	228	447	76%	54%	14%	62%	77%	111
North Woods	227	397	63%	49%	19%	13%	20%	204
Northside	334	549	85%	58%	28%	94%	100%	0
Southern Bluffs	279	415	36%	13%	18%	48%	93%	254
State Road	280	397	45%	21%	14%	77%	88%	121
Summit	258	414	56%	30%	14%	22%	68%	123

Referendum Option #2: Hintgen + Spence

Spence Site

Proposed Boundaries



Parameters

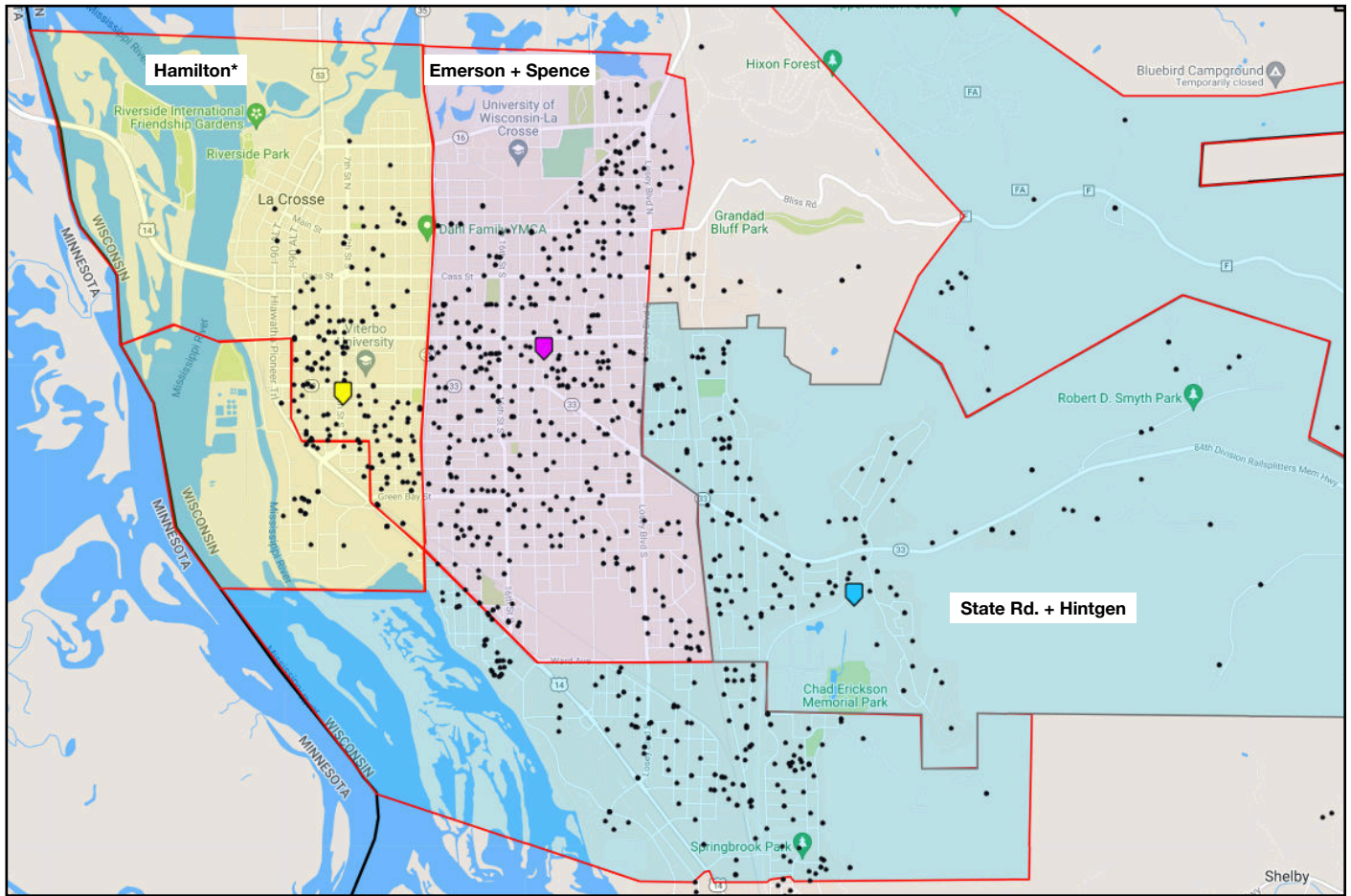
Parameter	Indicator	Metric
Deferred Maintenance	Reduced deferred maintenance	\$4,315,315
Minimize Impact	Students changing to a new site	294
Minimize Impact/Accessible Schools	Students changing site: closer to the new site	43%
Accessible Schools	Students impacted: within one mile of school	67% → 59%
New or Improved Building	Students impacted: at new building or same site	100%
Budget Deficit	Remaining structural budget deficit	-\$1.6M

Demographics

Elementary	Enrollment	Capacity	% F/R	% Of Color	% SPED	% 1 Mile	% 2 Miles	Bussing Eligible
Spence + Hintgen	485	550	67%	43%	19%	59%	100%	113
Emerson	290	466	32%	21%	19%	80%	100%	0
Hamilton	244	418	88%	64%	31%	95%	100%	0
North Woods	227	397	63%	49%	19%	13%	20%	204
Northside	334	549	85%	58%	28%	94%	100%	0
Southern Bluffs	279	415	36%	13%	18%	48%	93%	254
State Road	280	397	45%	21%	14%	77%	88%	121
Summit	258	414	56%	30%	14%	22%	68%	123

Referendum #1 & Hintgen + State Road

Proposed Boundaries



Parameters

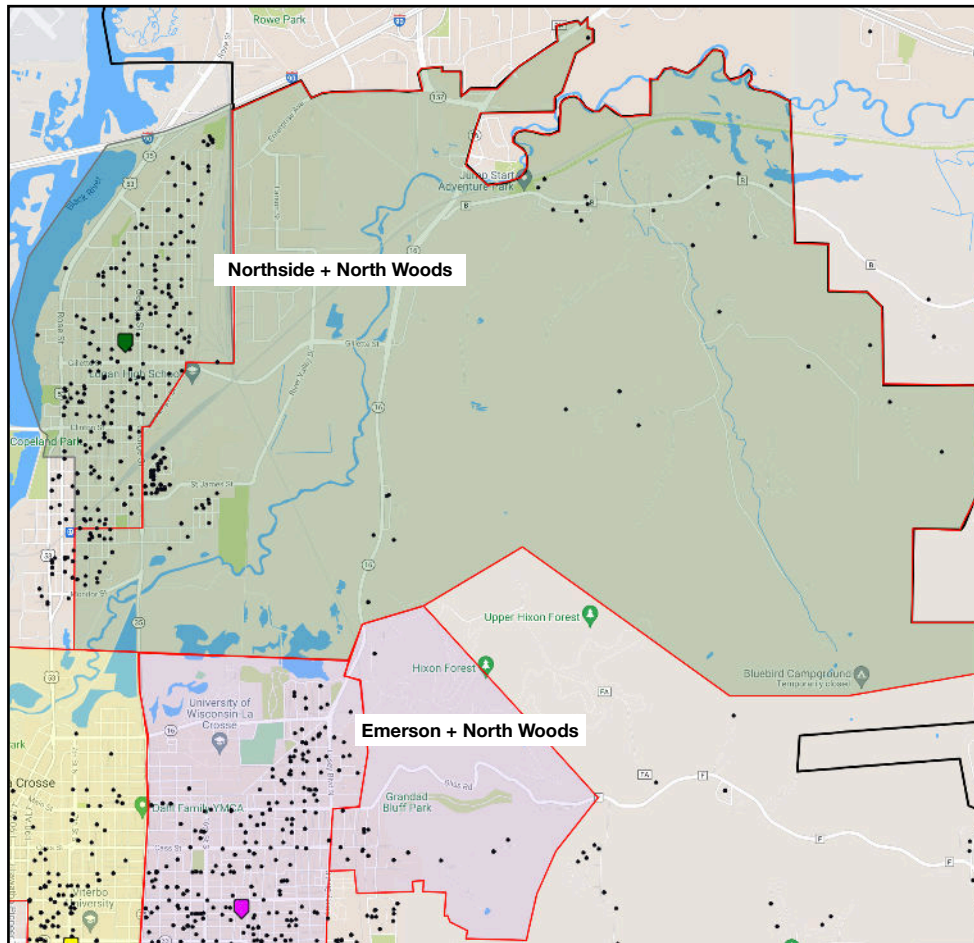
Parameter	Indicator	Metric
Deferred Maintenance	Reduced deferred maintenance	\$7,228,571
Minimize Impact	Students changing to a new site	945
Minimize Impact/Accessible Schools	Students changing site: closer to the new site	57%
Accessible Schools	Students impacted: within one mile of school	79% → 74%
New or Improved Building	Students impacted: at new building or same site	78%
Budget Deficit	Remaining structural budget deficit	-\$0.6M

Demographics

Elementary	Enrollment	Capacity	% F/R	% Of Color	% SPED	% 1 Mile	% 2 Miles	Bussing Eligible
Emerson + Spence	491	550	45%	27%	18%	85%	100%	0
Hamilton*	373	418	86%	60%	26%	99%	100%	43
State Rd + Hintgen	448	450	52%	31%	16%	47%	96%	211
North Woods	227	397	63%	49%	19%	13%	20%	204
Northside	334	549	85%	58%	28%	94%	100%	0
Southern Bluffs	279	415	36%	13%	18%	48%	93%	254
Summit	258	414	56%	30%	14%	22%	68%	123

Referendum #1 & Close North Woods

Proposed Boundaries



Parameters

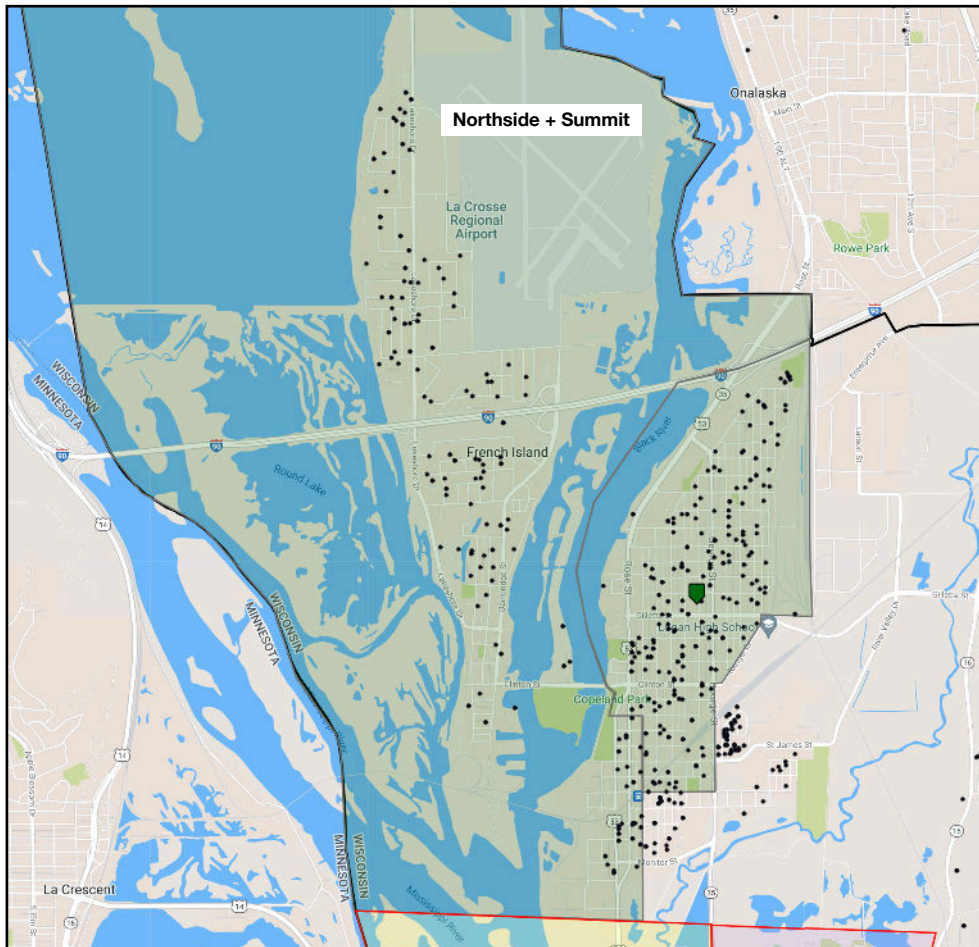
Parameter	Indicator	Metric
Deferred Maintenance	Reduced deferred maintenance	\$7,074,682
Minimize Impact	Students changing to a new site	809
Minimize Impact/Accessible Schools	Students changing site: closer to the new site	63%
Accessible Schools	Students impacted: within one mile of school	60% → 85%
New or Improved Building	Students impacted: at new building or same site	64%
Budget Deficit	Remaining structural budget deficit	-\$0.6M

Demographics

Elementary	Enrollment	Capacity	% F/R	% Of Color	% SPED	% 1 Mile	% 2 Miles	Bussing Eligible
Emerson + Spence	518	550	43%	26%	17%	83%	100%	0
Hamilton*	310	418	86%	58%	27%	99%	100%	0
Northside + North Woods	525	550	78%	50%	24%	80%	92%	42
Hintgen	228	447	76%	54%	14%	62%	77%	111
Southern Bluffs	279	415	36%	13%	18%	48%	93%	254
State Road	280	397	45%	21%	14%	77%	88%	121
Summit	258	414	56%	30%	14%	22%	68%	123

Referendum #1 & Close Summit

Proposed Boundaries



Parameters

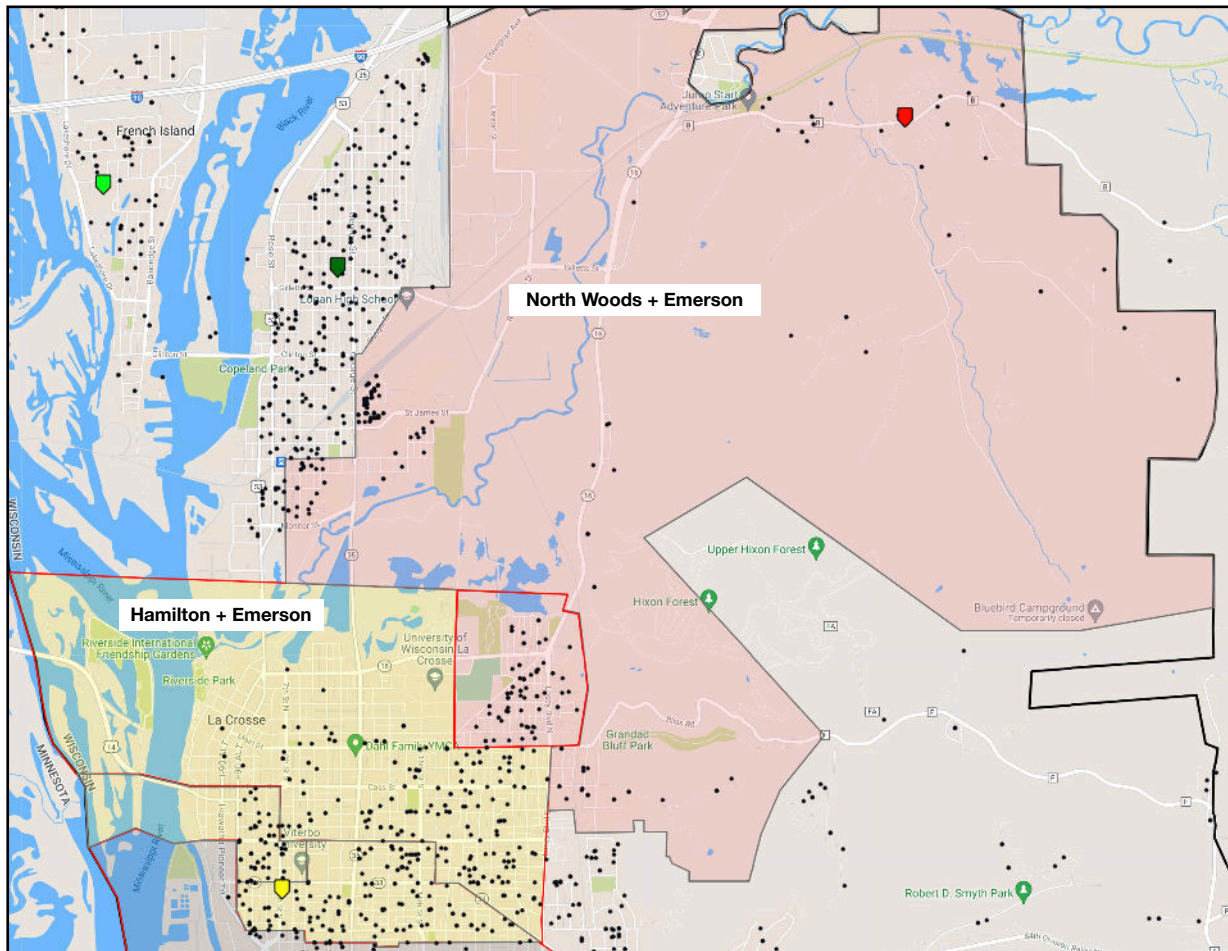
Parameter	Indicator	Metric
Deferred Maintenance	Reduced deferred maintenance	\$8,307,745
Minimize Impact	Students changing to a new site	840
Minimize Impact/Accessible Schools	Students changing site: closer to the new site	51%
Accessible Schools	Students impacted: within one mile of school	71% → 77%
New or Improved Building	Students impacted: at new building or same site	58%
Budget Deficit	Remaining structural budget deficit	-\$0.6M

Demographics

Elementary	Enrollment	Capacity	% F/R	% Of Color	% SPED	% 1 Mile	% 2 Miles	Bussing Eligible
Emerson + Spence	491	550	45%	27%	18%	85%	100%	0
Hamilton*	310	418	86%	58%	27%	99%	100%	0
Northside + Summit	554	550	66%	44%	21%	78%	87%	146
Hintgen	228	447	76%	54%	14%	62%	77%	111
North Woods	227	397	63%	49%	19%	13%	20%	204
Southern Bluffs	279	415	36%	13%	18%	48%	93%	254
State Road	280	397	45%	21%	14%	77%	88%	121

Referendum #2 & Close Emerson

Proposed Boundaries



Parameters

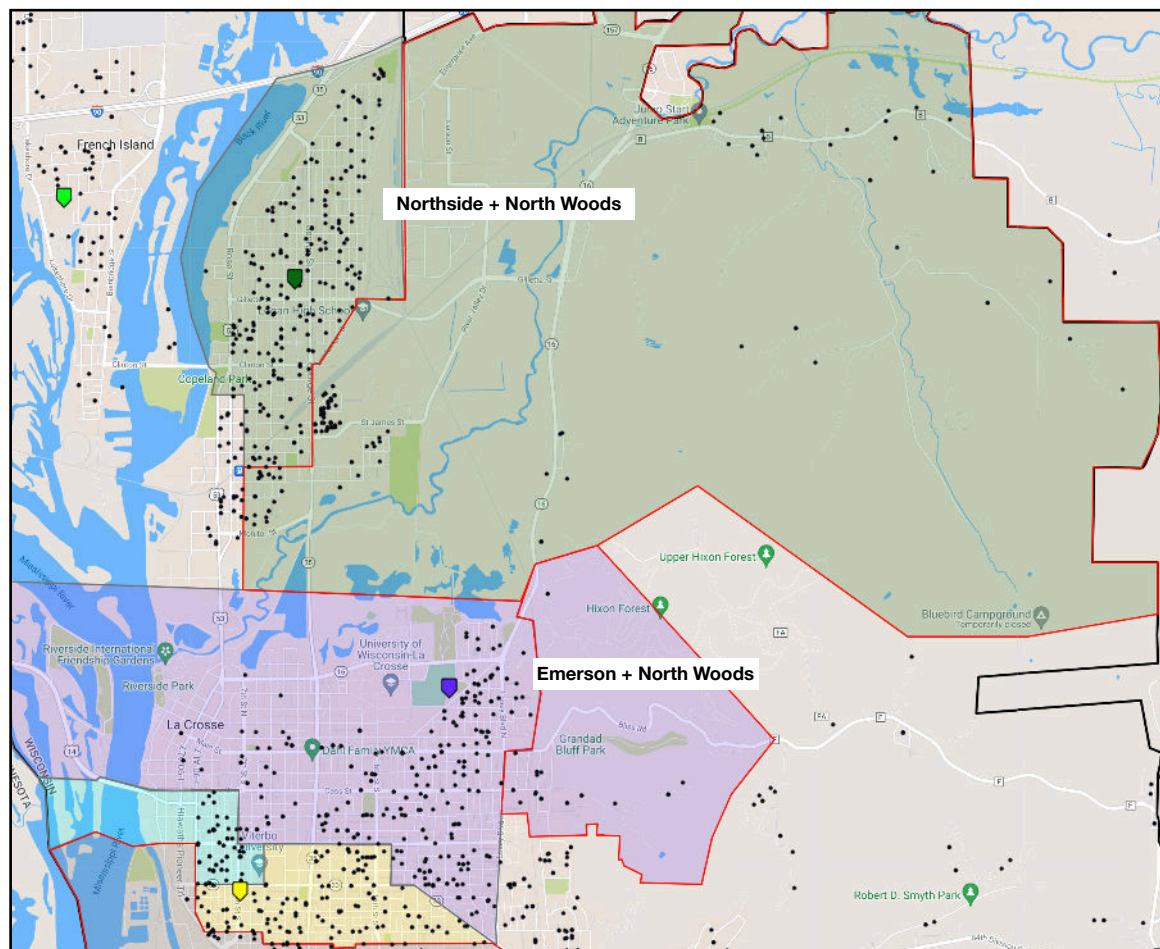
Parameter	Indicator	Metric
Deferred Maintenance	Reduced deferred maintenance	\$7,228,571
Minimize Impact	Students changing to a new site	643
Minimize Impact/Accessible Schools	Students changing site: closer to the new site	44%
Accessible Schools	Students impacted: within one mile of school	69% → 53%
New or Improved Building	Students impacted: at new building or same site	58%
Budget Deficit	Remaining structural budget deficit	-\$0.6M

Demographics

Elementary	Enrollment	Capacity	% F/R	% Of Color	% SPED	% 1 Mile	% 2 Miles	Bussing Eligible
Hamilton + Emerson	421	418	47%	40%	25%	73%	100%	0
Spence + Hintgen	485	550	67%	43%	19%	59%	100%	112
North Woods + Emerson	376	397	53%	34%	17%	9%	14%	236
Northside	334	549	85%	58%	28%	94%	100%	0
Southern Bluffs	279	415	36%	13%	18%	48%	93%	254
State Road	280	397	45%	21%	14%	77%	88%	121
Summit	258	414	56%	30%	14%	22%	68%	123

Referendum #2 & Close North Woods

Proposed Boundaries



Parameters

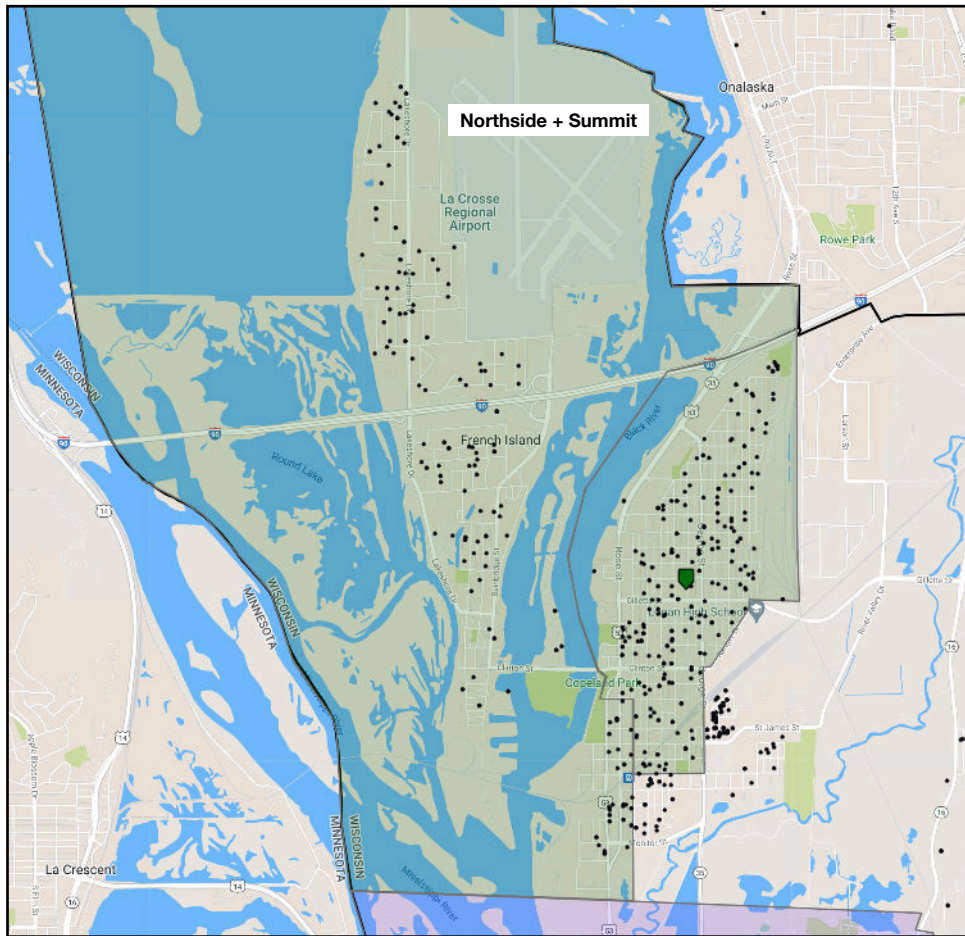
Parameter	Indicator	Metric
Deferred Maintenance	Reduced deferred maintenance	\$5,066,404
Minimize Impact	Students changing to a new site	475
Minimize Impact/Accessible Schools	Students changing site: closer to the new site	44%
Accessible Schools	Students impacted: within one mile of school	73% → 72%
New or Improved Building	Students impacted: at new building or same site	58%
Budget Deficit	Remaining structural budget deficit	-\$0.6M

Demographics

Elementary	Enrollment	Capacity	% F/R	% Of Color	% SPED	% 1 Mile	% 2 Miles	Bussing Eligible
Spence + Hintgen	485	550	67%	43%	19%	59%	100%	113
Emerson + North Woods	312	466	37%	20%	20%	82%	100%	2
Northside + North Woods	525	550	78%	50%	24%	80%	92%	42
Hamilton	244	418	88%	64%	31%	95%	100%	0
Southern Bluffs	279	415	36%	13%	18%	48%	93%	254
State Road	280	397	45%	21%	14%	77%	88%	121
Summit	258	414	56%	30%	14%	22%	68%	123

Referendum #2 & Close Summit

Proposed Boundaries



Parameters

Parameter	Indicator	Metric
Deferred Maintenance	Reduced deferred maintenance	\$6,299,467
Minimize Impact	Students changing to a new site	481
Minimize Impact/Accessible Schools	Students changing site: closer to the new site	57%
Accessible Schools	Students impacted: within one mile of school	71% → 59%
New or Improved Building	Students impacted: at new building or same site	62%
Budget Deficit	Remaining structural budget deficit	-\$0.6M

Demographics

Elementary	Enrollment	Capacity	% F/R	% Of Color	% SPED	% 1 Mile	% 2 Miles	Bussing Eligible
Spence + Hintgen	485	550	67%	43%	19%	59%	100%	113
Northside + Summit	554	550	66%	44%	21%	78%	87%	146
Emerson	290	466	32%	21%	19%	80%	100%	0
Hamilton	244	418	88%	64%	31%	95%	100%	0
North Woods	227	397	63%	49%	19%	13%	20%	204
Southern Bluffs	279	415	36%	13%	18%	48%	93%	254
State Road	280	397	45%	21%	14%	77%	88%	121